

8.8 Recreation Access Indicator 7. Strategic use of Access Control to Minimize Human Impact on Fish, Wildlife, and Other Environmental Values

8.8.1 Measure: Efficacy of Access Control

8.8.2 Results and Discussion:

The LRMP identified several access-sensitive areas. Common protection measures for these areas include:

- no permanent access allowed
- establishing gates to facilitate restricted or seasonal access
- establishing alternative barriers to access (e.g. removing bridges; placing rock piles; deactivating roads upon completion of activities) to facilitate a more permanent access restriction

Table 20 lists access-sensitive areas and describes access control measures taken to protect their values; Figure 45 shows their location.

Table 20 – Access Sensitive Areas

Access-Sensitive Area	LUP provisions to manage sensitivity	Licensees in compliance
Grizzly – High value habitat	No permanent access within 150m of identified habitats	Generally yes – in addition, access control points are partially provided by Gates #2, 3 and 4 (Table 21). Several incidences of vandalism have occurred to Gate #3.
Grizzly – Moderate value habitat	2-pass harvest system with quick first pass followed by half a rotation of sustained inactivity. Secondary roads deactivated <5 years after harvest	Yes.
Grizzly – Nichyeskwa North management unit	Access control point to restrict access to industrial use only, from May 1 to Nov 1.	Yes – access control provided by Gate #3.
Grizzly – Nichyeskwa South management unit	Winter harvest only/prompt deactivation strategy	Yes.
Grizzly – Boucher Creek Wetlands management unit	Access control point to restrict access to industrial use only, from May 1 to Nov 1. 2-pass system with quick first pass harvest entry followed by half a rotation of sustained inactivity. Secondary roads deactivated <5 years after harvest	Yes – access control provided by Gate #2. In compliance with harvest and road deactivation provisions.
Goat Habitat	Access restricted within 1 km of habitat by deactivating roads, establishing access control points or constructing only temporary roads.	All three access control strategies implemented. Access control points include Gates #1, #5 and #6.

Caribou – Key Forested Habitat	4x4 access controlled by removing bridges or culvert at strategic locations. Snow machine/ATV access limited by maintaining treed barriers between roads, cut blocks and subalpine.	Yes.
Caribou – ESSF	As above.	Yes.
Caribou – Mooseskin Johnny Lake corridor	Access control point to restrict motorized traffic	Yes – Gate #11.
Copper River angling	Access restricted by using a deactivation strategy, access control point or temporary roads.	Partly. There are three points of access (McDonnell South, Copper South and Dennis West FSR's). McDonnell South bridge has a removable section (generally kept in place). Copper South bridge has no access control. Dennis West bridge has been pulled.
Kitsequecla River angling	As above.	Two of the three access control strategies implemented. The one crossing has no access control.
Babine River (west, south, east) SMZ2	As above. Also, temporary access maintained at least 300 metres from the wilderness zone boundary.	All three access control strategies implemented. Gate #3 provides an access control point for Babine River West.
Mulwain Creek SMZ2	Strategic placement of a gate to limit access to the Seven Sisters Protected Area.	Yes – Gate #8.
Serb Creek SMZ2	Strategic placement of gates to limit grizzly bear/non-industrial traffic interaction.	No development in this area as yet. Gates #9 and #10 are proposed to restrict access.
Reiseter Creek SMZ2	Per CRB direction, installation of a gate to minimize impacts on wildlife and to restrict access to the Babine Mountains Provincial Park.	Yes – Gate #6.
Babine Mountains Park	Maintain hiking trail access by protecting trails	Yes – trails are protected in part by gates (e.g. Gates #5 and #6), and by park status.

Gates¹ have been selected to illustrate an effective, flexible means of access control. Their strategic placement enables harvest and road building to occur while at the same time protecting important wildlife, non-motorized, and environmental values. Table 21 lists existing gates on forestry roads and their current schedules; Figure 45 shows their location.

¹ The Bulkley District Gate Lock Procedure is available for download from the Skeena-Stikine Forest District FTP site (http://www.for.gov.bc.ca/ftp/dss/external!/publish/gate_lock_2.doc)

Table 21 – Gates

Number ¹	Location	Approximate Schedule	Value
1	22 km on 480 Road	Operational ²	Goats; Grizzly
2	1 km 465 Road	Closed all year round for the foreseeable future.	Grizzly
3	2 km 456 Road	Closed May 1 to Nov 1.	Grizzly
4	455 Road at District Boundary (Nichyeskwa Connector)	Closed in summer.	Grizzly
5	~2 km 314 Road	Operational.	Babine Mt. Park; Goats
6	~9 km 9000 Road	Operational; planned to be closed year round starting Fall of 2003.	Babine Mt. Park; Goats
7	54 km McDonnell FSR	Operational.	Seven Sisters Park
8	16 km Dennis West FSR	Proposed. Operations are planned several years in future.	Serb Creek SMZ ²
9	~2 km Caribou Creek FSR	Proposed. Operations are planned several years in future.	Serb Creek SmZ ²
10	0 km 188 Road (bridge for Telkwa River)	Operational.	Caribou

¹Several Woodlot licensees have installed gates on their woodlots to protect their logging equipment. These are not listed.

²Gates classified as “Operational” are **normally closed**, except when forestry operations are taking place. That is generally in the winter months for harvesting and the late spring for reforestation, and possibly in the summer for hauling of previously decked logs or road building.

In summary, there are 16 access-sensitive area types identified within the Bulkley LRMP, 11 of which are fully or partially protected using gates. The MOF reviews access management plans submitted by licensees to ensure provisions to protect values (Table 20) are observed: licensees are in general compliance with these provisions

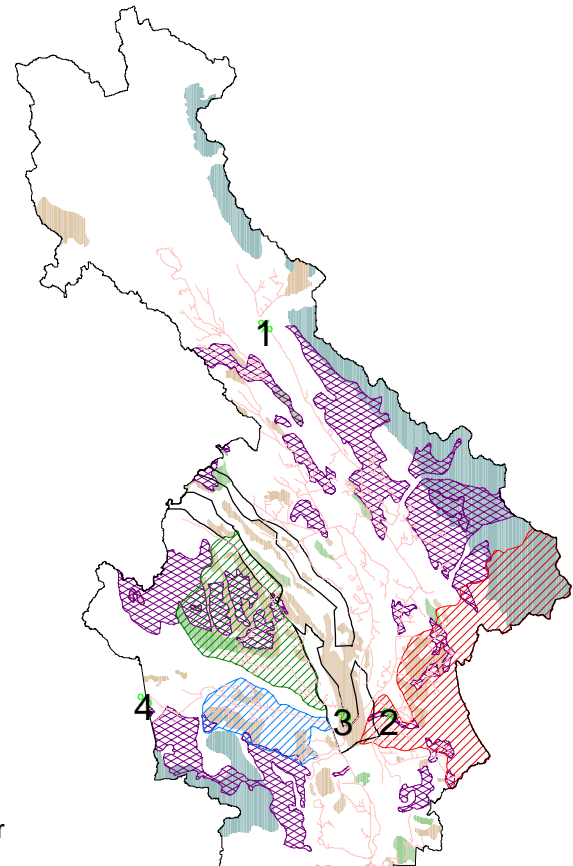
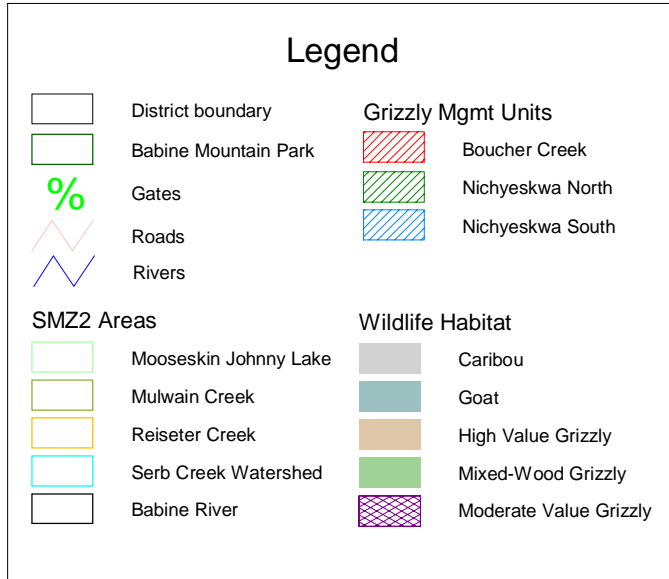
8.8.3 Data Sources:

Bulkley District Gate Lock Procedure (draft, July 30, 2003). Ministry of Forests.

Bulkley LRMP (March 1998)

Bulkley Landscape Unit Plans (September 1999)

Access-Sensitive Areas; Gates



Refer to Table 21 for gate details corresponding to number

