

2.3 Biodiversity Indicator 2. Core Ecosystems

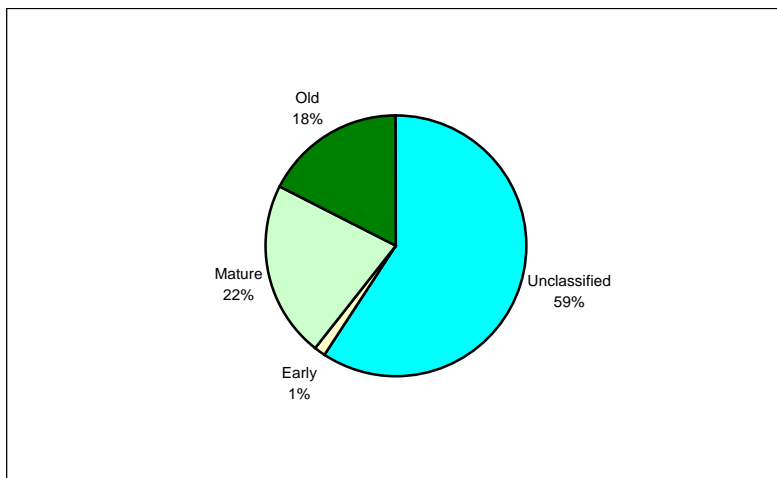
2.3.1 Core Ecosystems

The core ecosystems are designed to assist in meeting the following four objectives:

1. maintain a cross section of ecosystems,
2. retain representative examples of rare and endangered plant communities.
3. retain representative examples of old seral age classes,
4. provide some areas with interior forest conditions,

The core ecosystems contribution to meeting the first 2 objectives are discussed in section 2.2 Ecosystem Representation and section 2.7 Retention of Habitat for Endangered Plant and Animal Life sections of this report. The following addresses the remaining 2 objectives.

Figure 2 - Breakdown of Seral Stage Representation in Cores



Seral stages represented in cores show the expected bias towards the mature and old forests with 39% of the total area represent in these two seral stages. In a few minor cases, cores were located over recent fires to allow natural succession patterns to occur.

Figure 3 - Seral Stage Distribution Represented by Cores

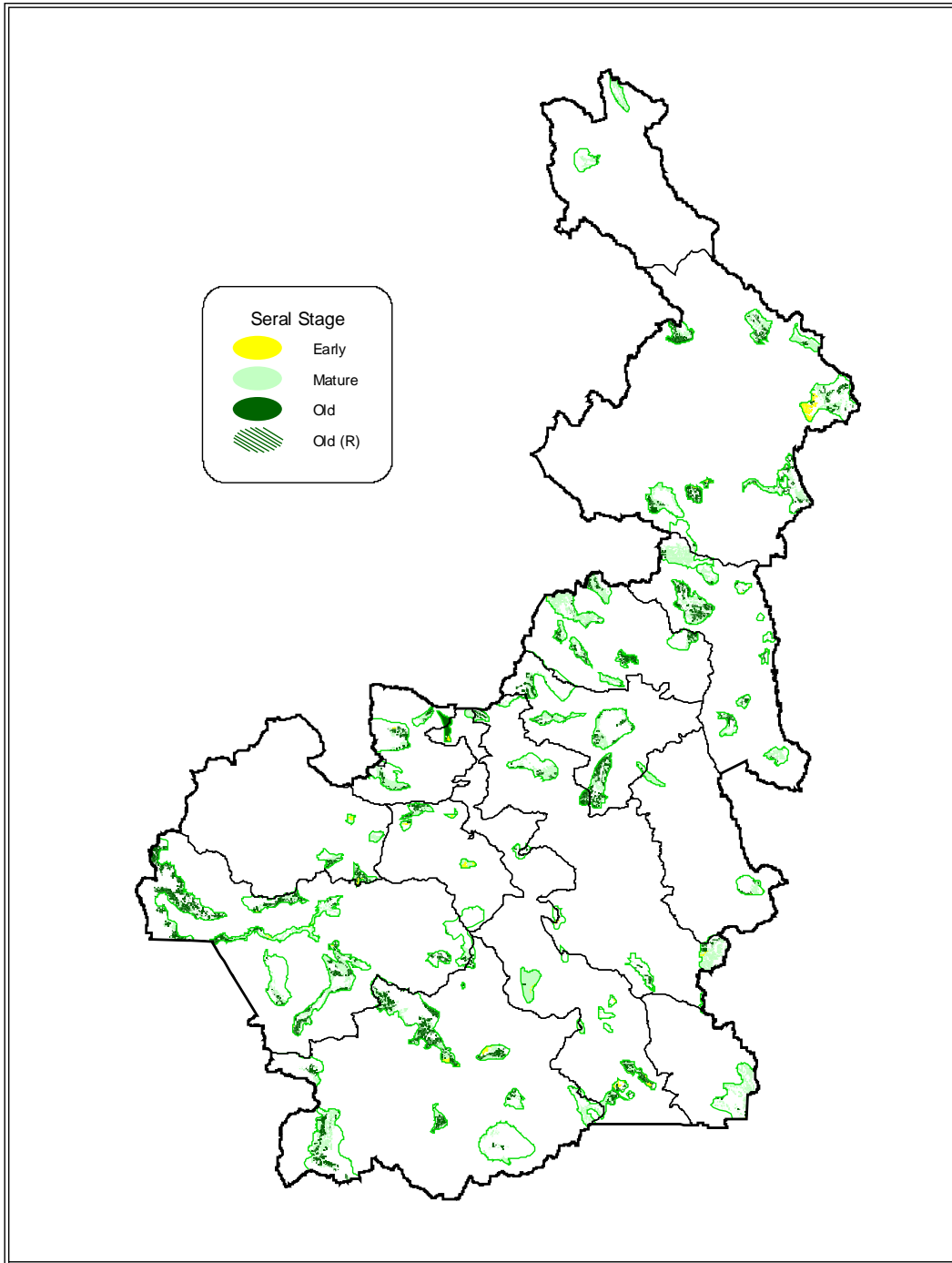
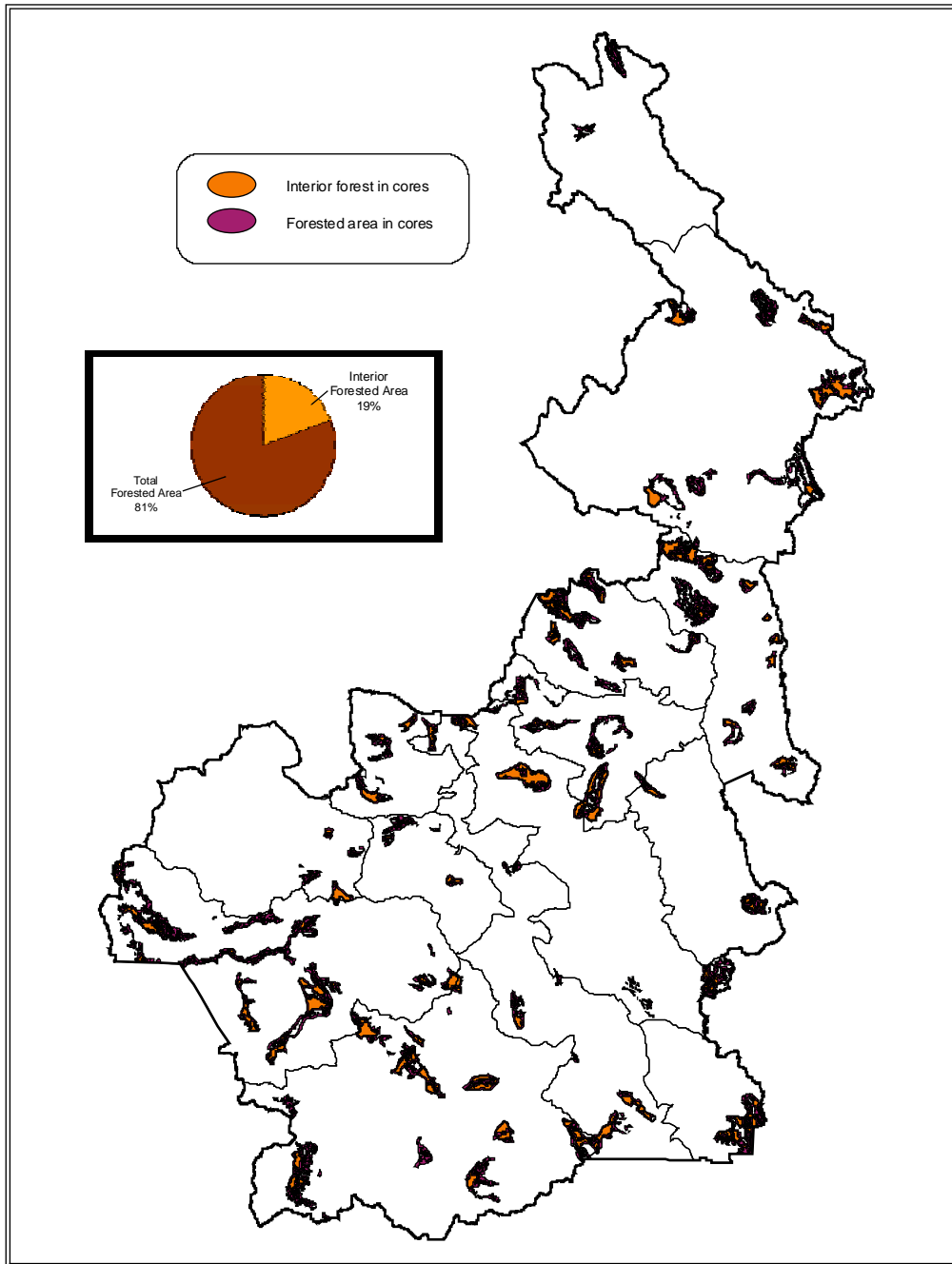


Figure 4 - Interior Forest in Core Ecosystems



Forested area within the core ecosystems was buffered by 200 meters to identify core areas of interior forest conditions¹. Of 67,000 hectares of forested area (across all seral stages) 19% is in interior forested condition. Average size of the interior patches is 33 hectares.

¹ Definition for interior forest conditions comes from the Biodiversity Guidebook (1995)