



Remote Vehicle Inspection Stations

OVERVIEW

Protecting highway infrastructure from damage caused by overweight vehicles is a key component of Saskatchewan Highways and Transportation's (DHT) mandate. To help achieve this DHT has implemented new and innovative technology for effective and efficient enforcement.

The Government of Canada and Saskatchewan Highways and Transportation have signed an agreement for the deployment of three Remote Vehicle Inspection Stations (RVIS) in Saskatchewan. The three sites are south of Carlyle on Highway No. 9, east of Weyburn on Highway No. 13 and north of Prince Albert on Highway No. 2. The supplier of the RVIS systems is International Road Dynamics Inc. (IRD) of Saskatoon.

To improve compliance levels in the province, Saskatchewan Highways and Transportation will use the Remote Vehicle Inspection Station to collect overweight vehicle data. In addition, the system will be capable of collecting statistical data on all traffic and vehicle configurations. This includes traffic counts, traffic volumes in relation to the time of day and traffic patterns. The Vehicle Inspection Stations do not contain radar or laser technology and will not be used for speed enforcement.

TECHNOLOGY

RVIS systems employ a variety of technologies to capture information on non-compliant trucks and power-unit/semi-trailer combinations. IRD uses patented Weigh in Motion (WIM) technology to analyze vehicles passing through the site at highway speeds. The system captures information such as the vehicle weight, axle configurations; inter axle spacing, licence plate numbers, vehicle types and the company name, if displayed on the vehicle.

Sensors in the road surface detect when a vehicle is passing through the site, and triggers the cameras.



Sensor Installation

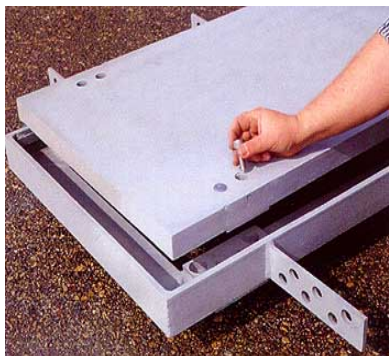


Sensor Installed

Cameras obtain video images of the vehicle and load and record the date and time, licence number and other pertinent vehicle information.



Camera



WIM Scale (1)



WIM Scale (2)



Accessing Information

The information collected is stored locally and then sent, via the internet, to a central location.

As the vehicle progresses though, it passes over the Weigh in Motion scale where the weights and measurements are taken and then stored. Information regarding non-compliant vehicles is archived and can be accessed by Saskatchewan Highways and Transportation for various reasons, including enforcement purposes.