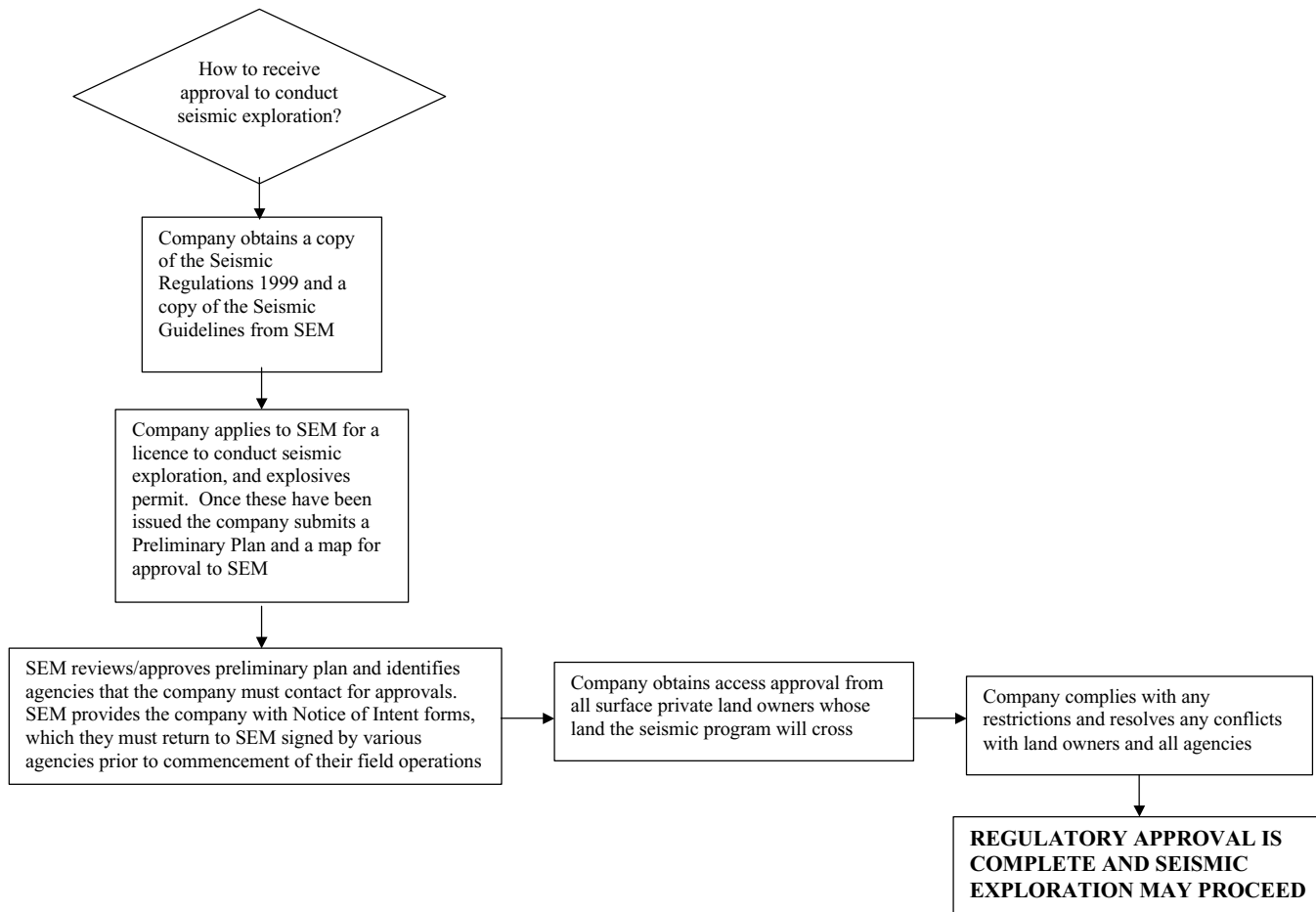
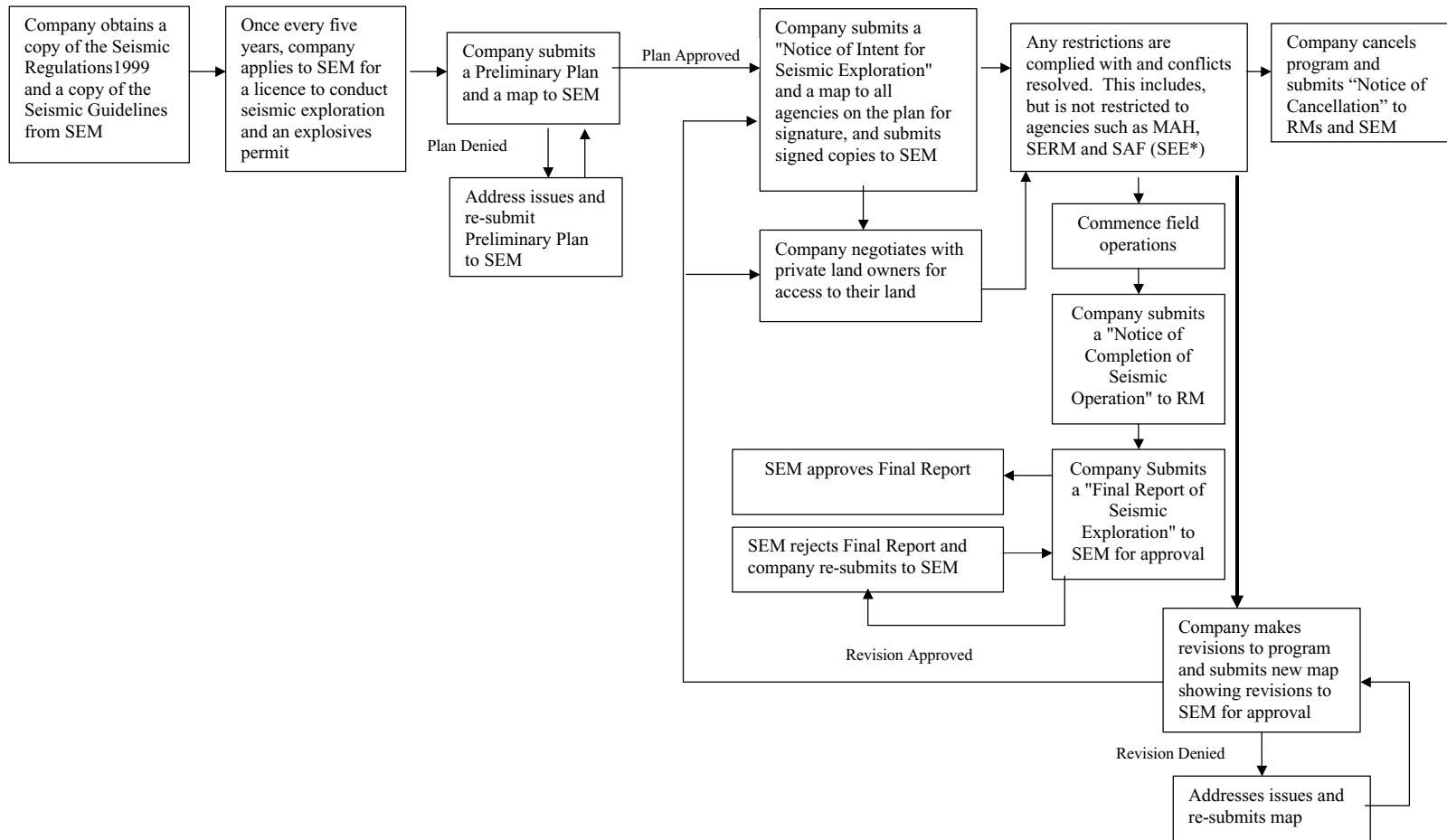


**THE PROVINCIAL REGULATORY APPROVAL PROCESS – SEISMIC EXPLORATION
(AN OVERVIEW)**



**THE PROVINCIAL REGULATORY APPROVAL PROCESS – SEISMIC EXPLORATION
(DETAILED)**

SEM

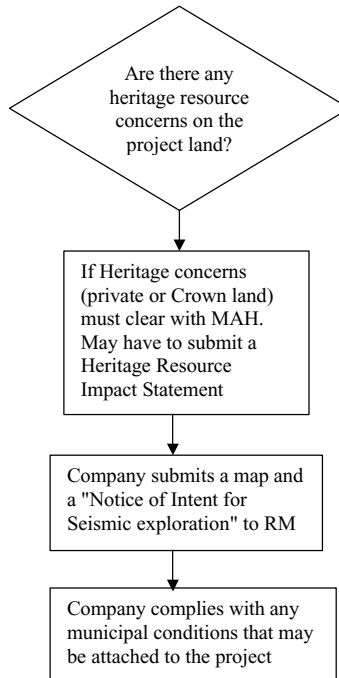


* The approval process for MAH, SERM, and SAF occurs at this point. See page 2 for MAH's approval process and page 3 for SERM and SAF's approval

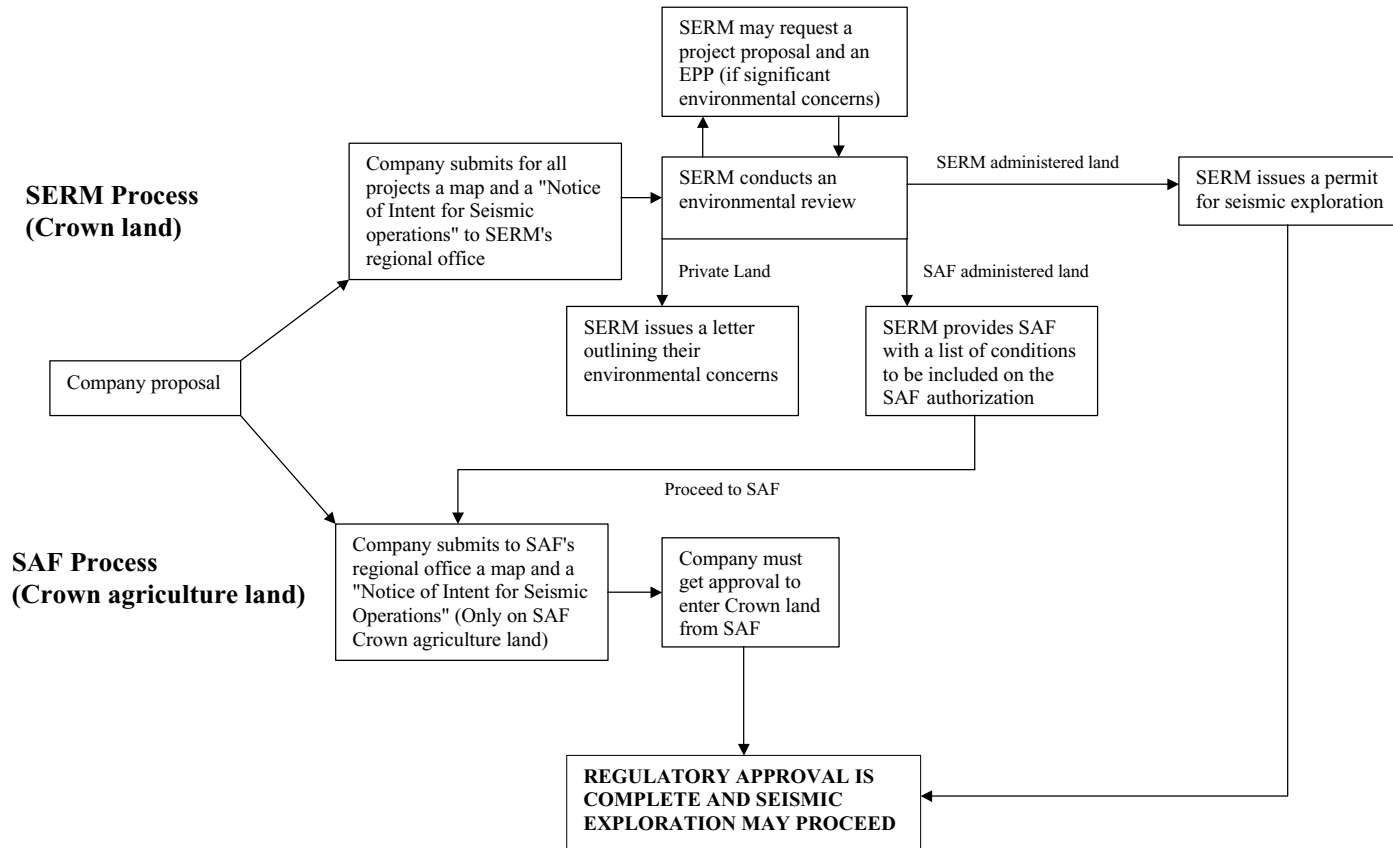
September 2001

**THE PROVINCIAL REGULATORY APPROVAL PROCESS – SEISMIC EXPLORATION
(DETAILED)**

MAH



**THE PROVINCIAL REGULATORY APPROVAL PROCESS – SEISMIC EXPLORATION
(DETAILED)**



Note: SERM and SAF reviews happen simultaneously when SAF Crown agriculture land is involved.