

A pictorial key to beetle pests commonly found in stored grains

Adapted from *A KEY TO SOME BEETLES COMMONLY FOUND IN STORED FOODS*, by Harry D. Pratt and Harold G. Scott

Prothorax with 6 teeth on each side

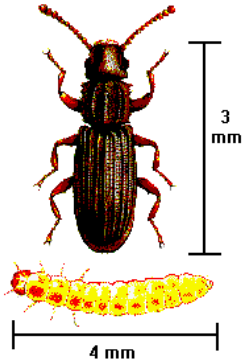
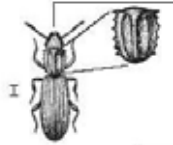


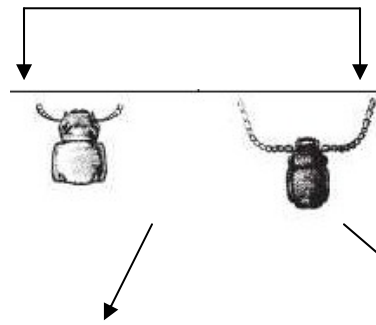
Photo AAFC
Sawtoothed Grain Beetle
Oryzaephilus surinamensis



Prothorax without multiple teeth on each side

Without distinct snout

Antenna shorter than length of head and prothorax together



Prothorax hood-shaped & head concealed from above

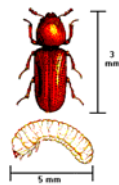


Photo AAFC
Lesser Grain Borer *Rhyzopertha dominica*

Antenna distinctly longer than length of head and prothorax together

Distinct snout

Hardened wings (elytra) with 4 pale spots. Punctures on prothorax rounded. Developed wings under elytra.

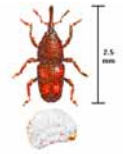


Photo AAFC
Rice Weevil
Sitophilus oryzae

Prothorax not hood-shaped

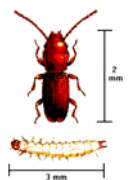


Photo AAFC
Rusty Grain Beetle
Cryptolestes sp.

Body at least 1/4" long

Body less than 1/4" long



Photo AAFC
Meal Worm
Tenebrio spp.

Eyes more or less rounded, not divided

Side margins of head projecting into and partially dividing eyes

Conspicuous tooth on each front corner of the prothorax

Without tooth on prothorax, body is hairy

Antennal club gradually enlarged toward tip

Antennal club with last three segments abruptly enlarged

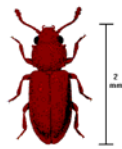


Photo AAFC
Foreign Grain Beetle
Ahasverus advena



Hairy Fungus Beetle
Typhaea



Confused Flour Beetle
Tribolium confusum



Red Flour Beetle
Tribolium castaneum

Coloured photos courtesy of Cereal Research Centre, Agriculture and Agri-Food Canada