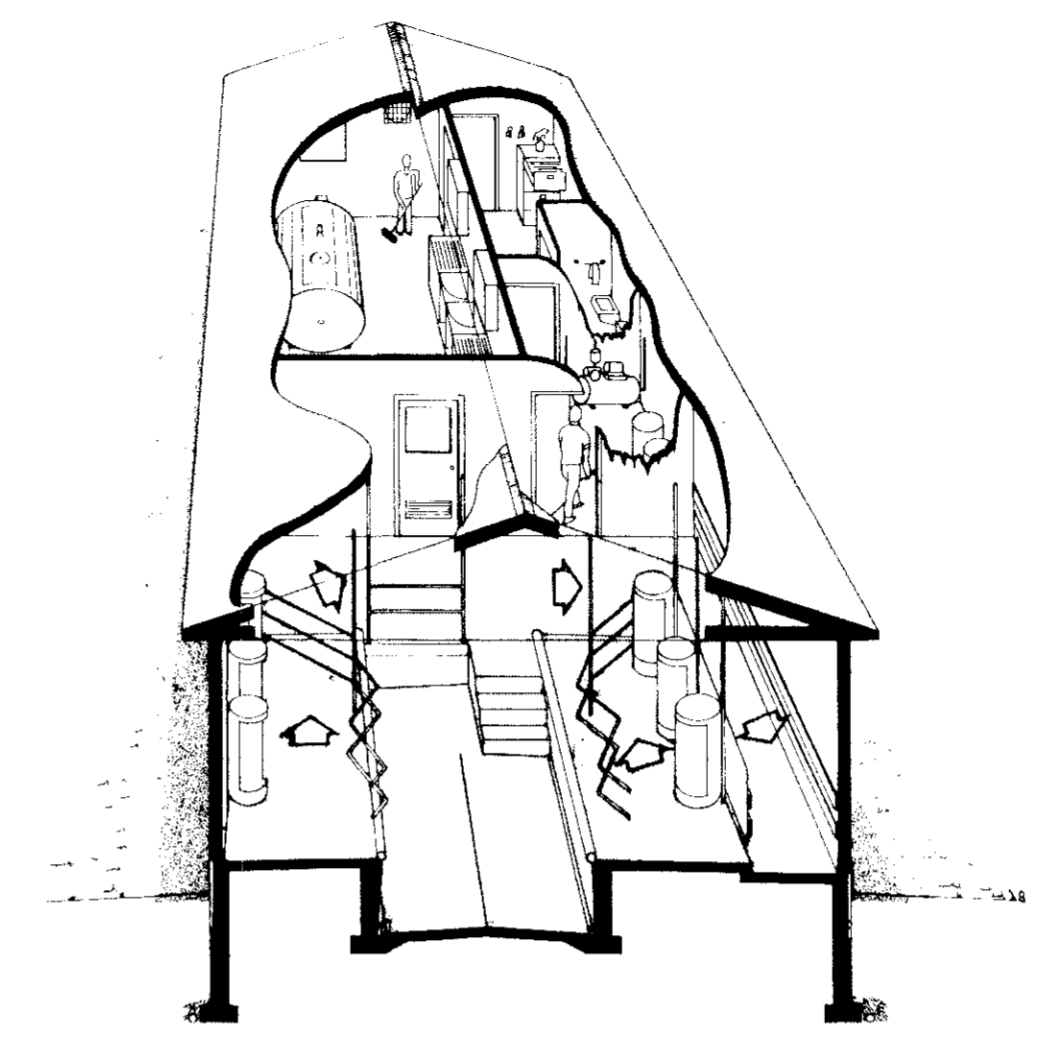
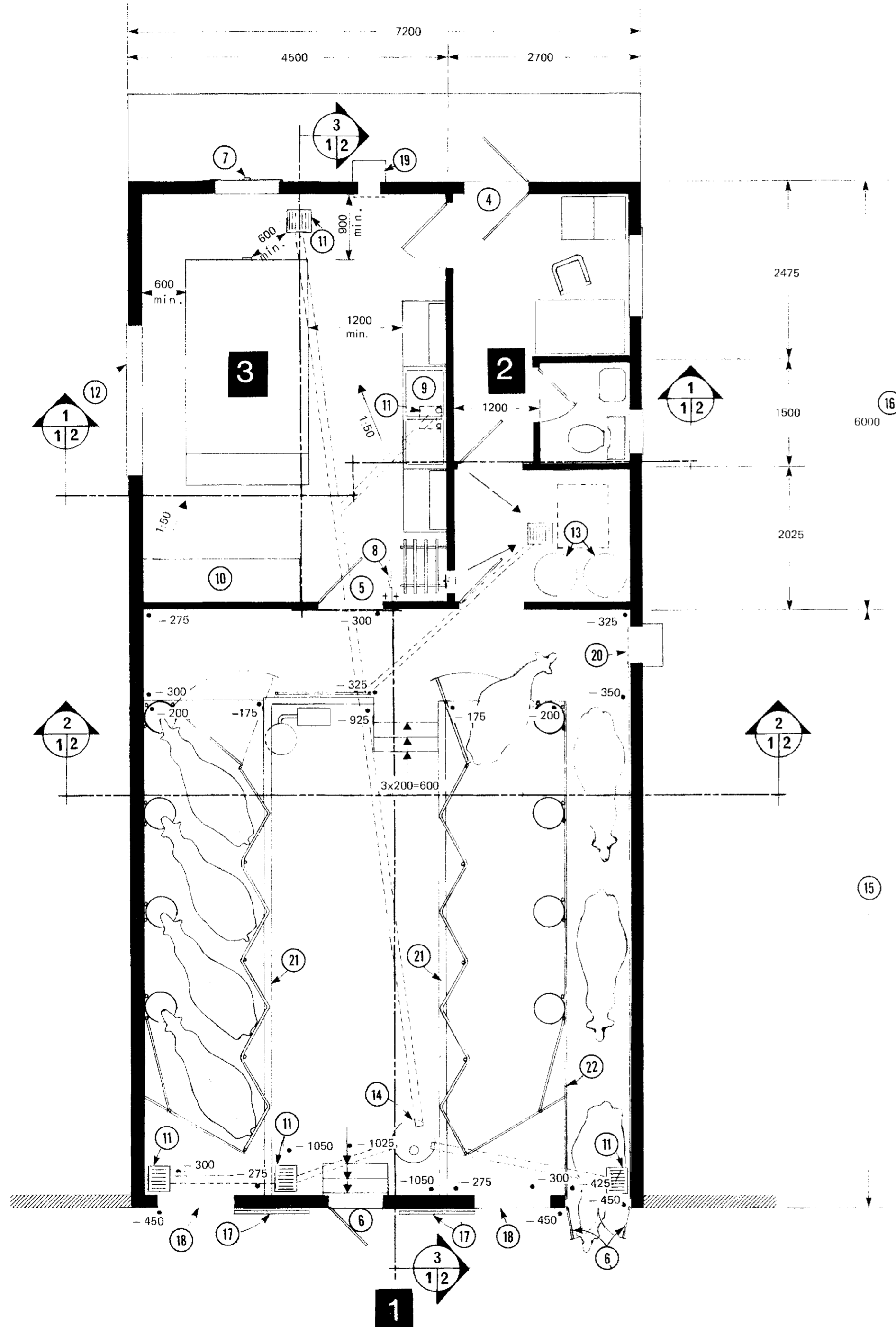


ALL DIMENSIONS ARE IN MILLIMETRES (mm) UNLESS OTHERWISE SPECIFIED



next revision, relocate 12 to end instead of side; water tank removed, no lintel needed. Jan. 84.04.17

- 1 floor plan; floor elevations such as -300 show mm below datum level (top of concrete foundations)
- 2 office, washroom and mechanical equipment room, (if refrigeration is located here, provide ventilation)
- 3 milk room, bulk milk tank with refrigeration, see also 3 sheet 3
- 4 910 x 2030 mm insulated door inside, screen door outside to concrete sidewalk
- 5 self-closing door, glass above, screen below, protect with grill on parlor side
- 6 self-closing door insulated if barn is cold
- 7 hose port at least 150 mm above floor and grade, window above
- 8 hot and cold mixing faucet
- 9 double sink and drain board, cupboard above
- 10 milk transfer equipment & auto-washing equipment for pipeline
- 11 floor drain with gas trap see 10 sheet 3
- 12 window and insulated panel under, both removable for replacement of bulk tank
- 13 2 x 270 L electric water heaters, one warm for cow wash, one hot for equipment wash
- 14 automatic sump pump in pit with cover
- 15 approximately 8400 mm for double-4 or 12000 mm for double-8 parlor (see supplier)
- 16 for over 100 cows, add 1200 mm to 2 & 3
- 17 if barn is warm, door is optional; if cold use vacuum operated insulated sliding doors 1050 x 2000 mm
- 18 single step up to parlor
- 19 air intake fan w/baffle, manual switch 250 L/s
- 20 optional summer exhaust fan 1650 L/s, manual switch, doors 6 & 17 closed; provide fresh-air inlet ducted from outdoors to ceiling over operator pit
- 21 75 mm galvanized pipe curb, or see supplier
- 22 pipe posts, 38 x 194 mm rub planks

ONE SET OF DRAWINGS & LEAFLETS SHOULD INCLUDE

CPS no.	SHEET no.	
M-2501	1	Herringbone milking center floor plan (single return alley)
M-2501	2	Cross & longitudinal section
M-2501	3	Electrical plan

AND

M-9324	Stud frame walls
M-9102	Truss erection and bracing
O-2503	Milking parlor grounding method

OPTIONAL Roof truss plan, to suit span & snow load

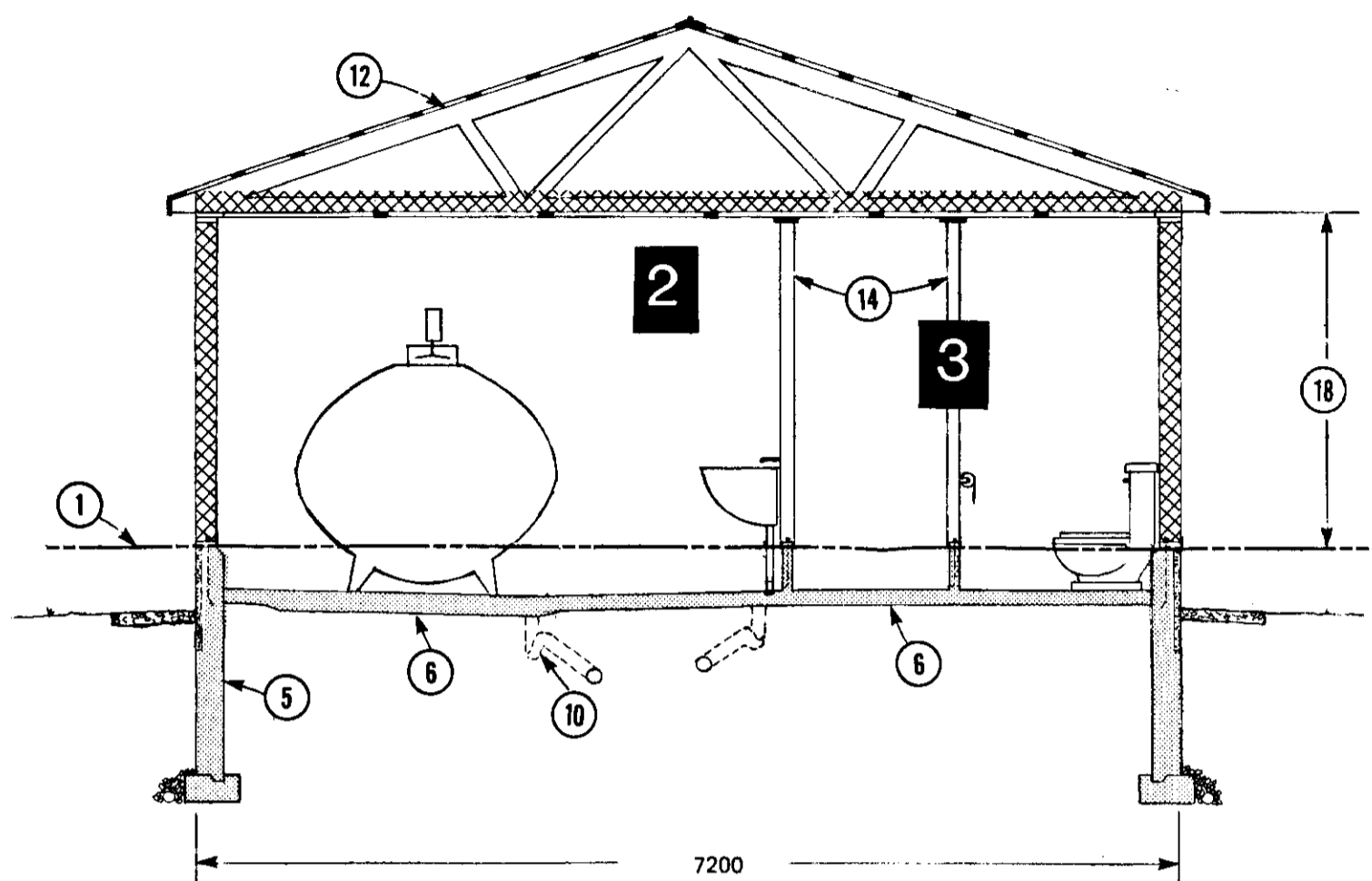
"This plan conforms to the requirements of the Canadian Farm Building Code. The user of this plan must ensure that the design criteria indicated herein will meet all local design conditions, building regulations and special requirements."

SYM	REVISIONS	CHECKED	DATE	APPROVED

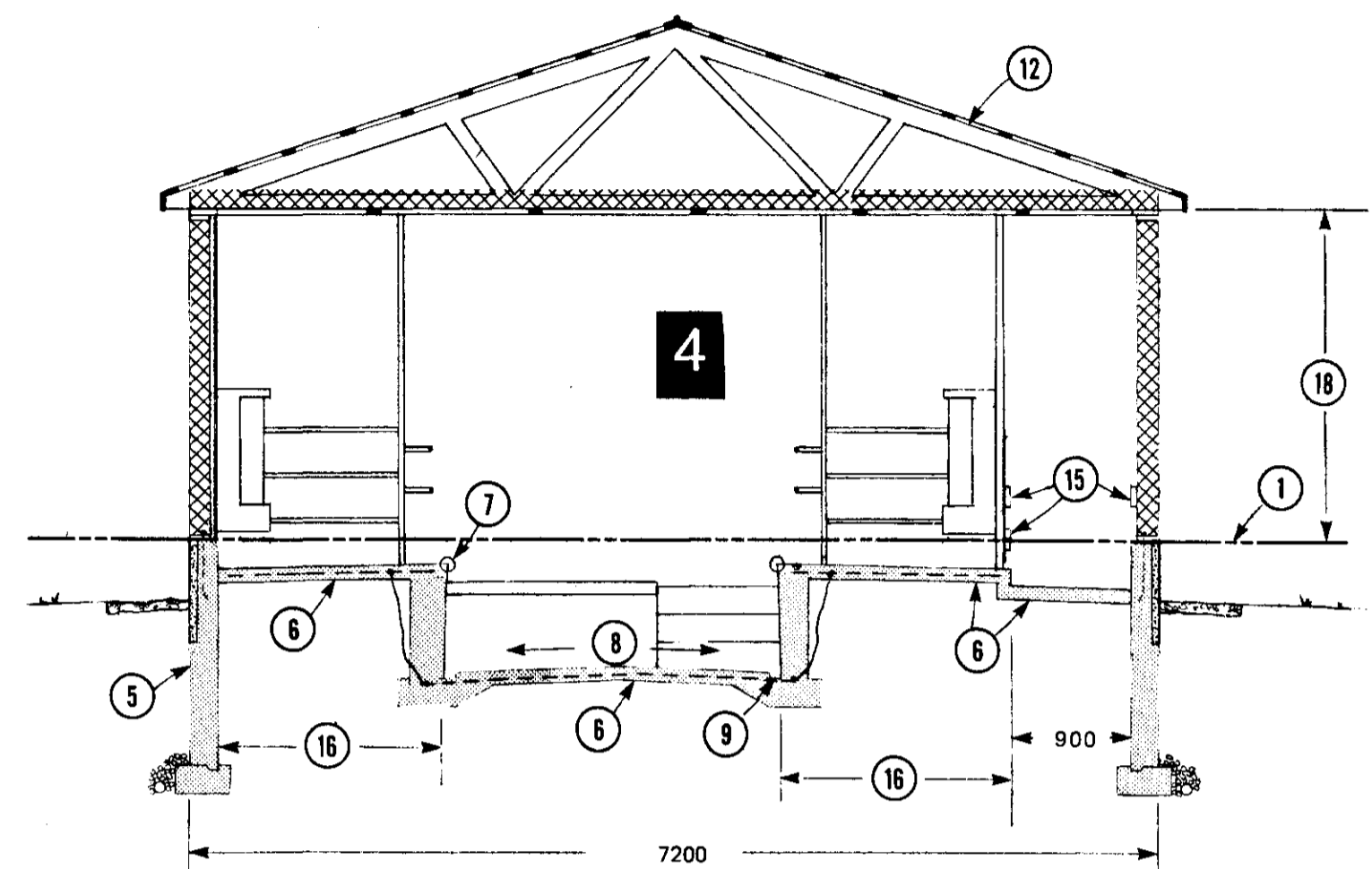
HERRINGBONE MILKING CENTER, FLOOR PLAN (SINGLE RETURN ALLEY)

DESIGNED JET	DATE 84-01	PLAN M-2501
DRAWN BROWN/MORDEN	REVISED	
TRACED	DETAIL NUMBER A	SHEET 1 OF
CHECKED JAM	ORIGINATES ON SHEET B DRAWN ON SHEET C	

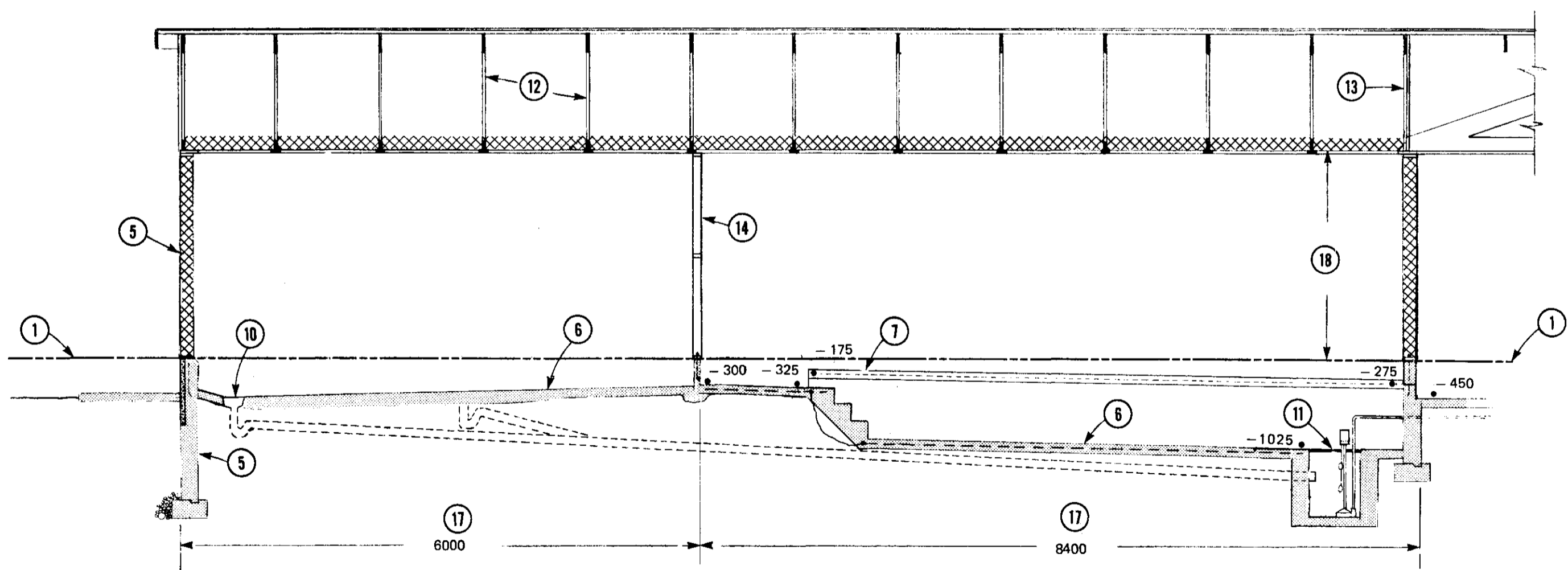
ALL DIMENSIONS ARE IN MILLIMETRES (mm) UNLESS OTHERWISE SPECIFIED



1
12
1:50
1000 mm



2
12
1:50
1000 mm



3
12
1:50
1000 mm

- 1 datum line, top of concrete foundation; floor elevations such as -300 show mm below datum line, dot shows location
- 2 milk room, height to give at least 900 mm clear from top of bulk tank to ceiling (for removal of measuring rod)
- 3 washroom and hallway to office
- 4 milking parlor (see supplier)
- 5 insulated wall and concrete foundation see plan M-9324, RSI-3.5 insulation in wall, 4.9 in ceiling, sill CCA pressure-treated & stud butts soaked in wood preservative
- 6 compacted sand or gravel fill 150 mm, polyethylene vapour barrier, floor 100 mm of 30 MPa concrete, 150 mm thick floor under bulk tank, for milking parlor grounding see plan Q-2503
- 7 75 mm galvanized pipe curb, top set 50 mm above stall floor, anchored to floor with 12 mm rebar lugs welded 900 mm oc
- 8 floors sloped to drain; see floor plan sheet 1
- 9 75 x 38 mm gutter, optional
- 10 floor drain and gas trap see 10 sheet 3
- 11 concrete sump pit with cover
- 12 trusses 7200 mm span, @ 1200 mm oc
- 13 join to dairy barn, construction varies
- 14 interior partitions 150 mm concrete block, or 89 mm stud frame; if wood frame, soak sill and bottom of studs with preservative, provide space over interior partitions as per camber indicated on truss plan
- 15 38 x 184 rub planks @ 450 mm and 900 mm from floor, secure to stall pipe posts with U-bolts recessed flush
- 16 dimension varies, see stall equipment supplier
- 17 see also 15 and 16 sheet 1
- 18 2450 mm if ceiling is fastened to 38 mm ceiling strapping, 2410 mm if ceiling is fastened directly to trusses (see M-9324)

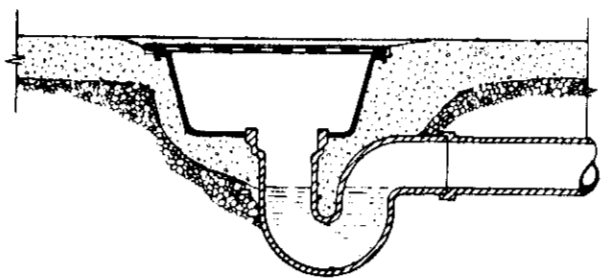
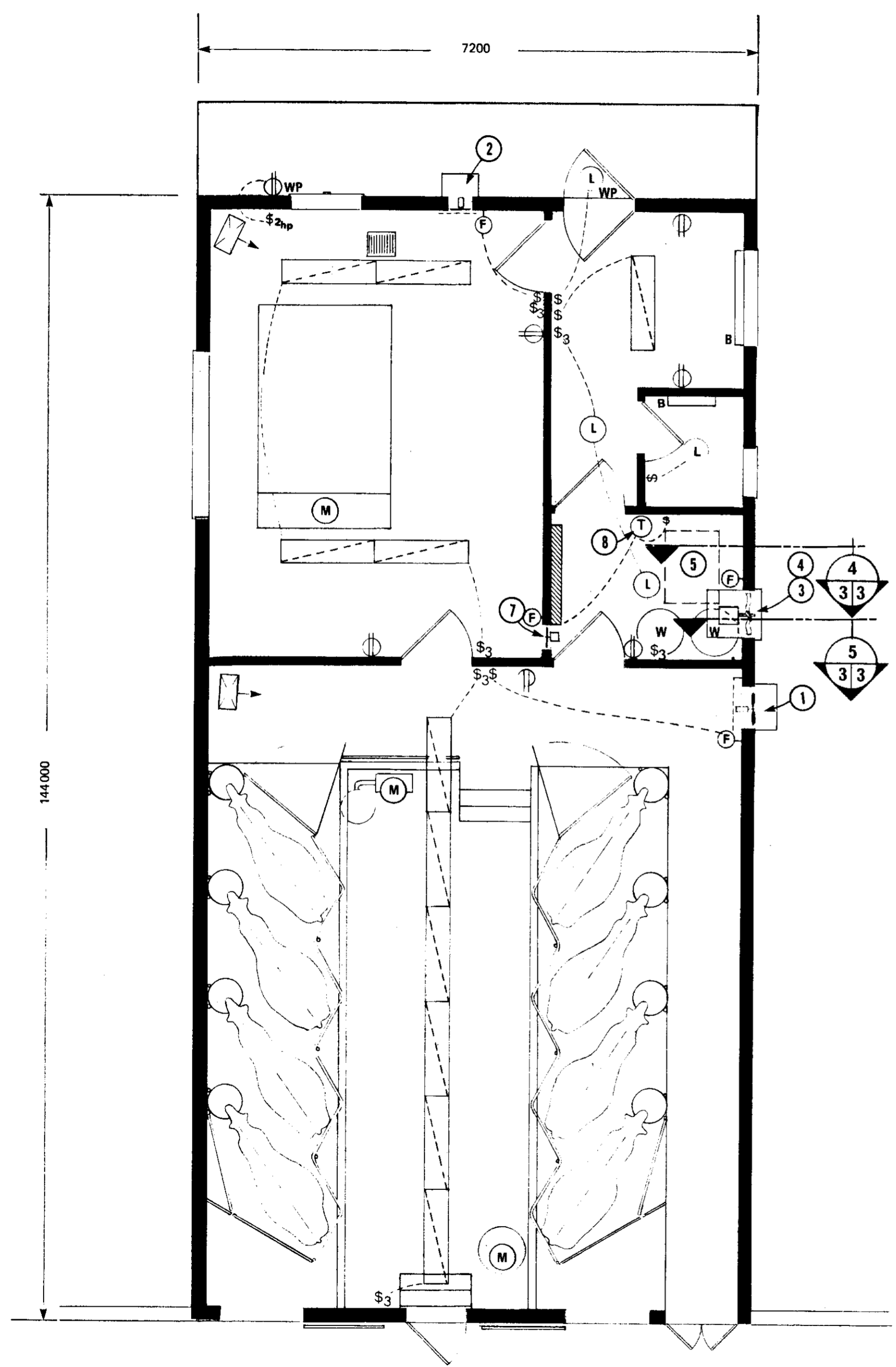
SYM	REVISIONS	CHECKED	DATE	APPROVED

CANADA
PLAN SERVICE

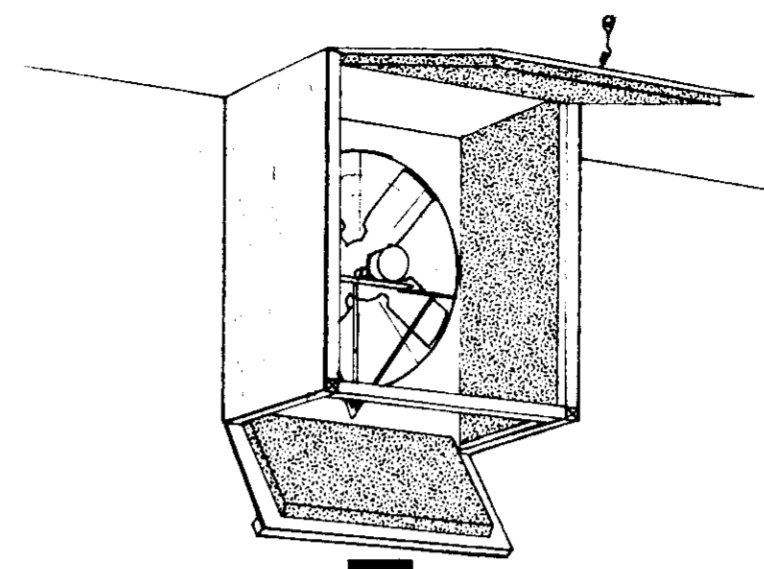
CROSS & LONGITUDINAL
SECTION

DESIGNED <i>JET</i>	DATE 84-01	<p>PLAN M-2501</p> <p>SHEET 2 OF 2</p>									
DRAWN BROWN/MORDEN	REVISED										
TRACED	<table border="1" style="font-size: small;"> <tr> <td style="text-align: center;">A</td> <td>DETAIL NUMBER</td> <td style="text-align: center;">A</td> </tr> <tr> <td style="text-align: center;">B</td> <td>ORIGINATES ON SHEET</td> <td style="text-align: center;">B</td> </tr> <tr> <td style="text-align: center;">C</td> <td>DRAWN ON SHEET</td> <td style="text-align: center;">C</td> </tr> </table>		A	DETAIL NUMBER	A	B	ORIGINATES ON SHEET	B	C	DRAWN ON SHEET	C
A	DETAIL NUMBER		A								
B	ORIGINATES ON SHEET	B									
C	DRAWN ON SHEET	C									
CHECKED <i>JAM</i>											

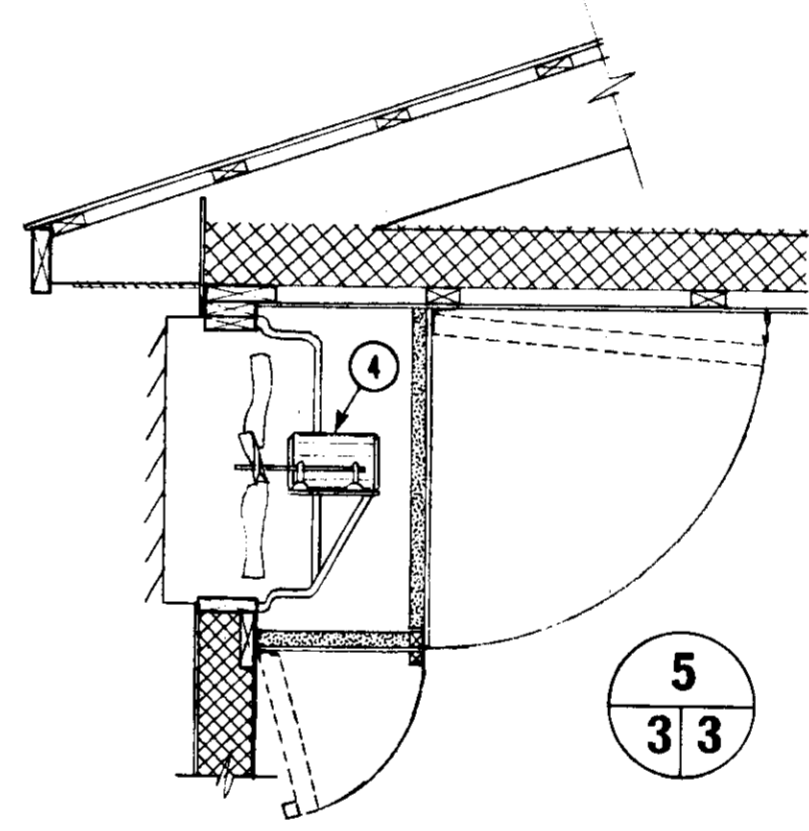
ALL DIMENSIONS ARE IN MILLIMETRES (mm) UNLESS OTHERWISE SPECIFIED



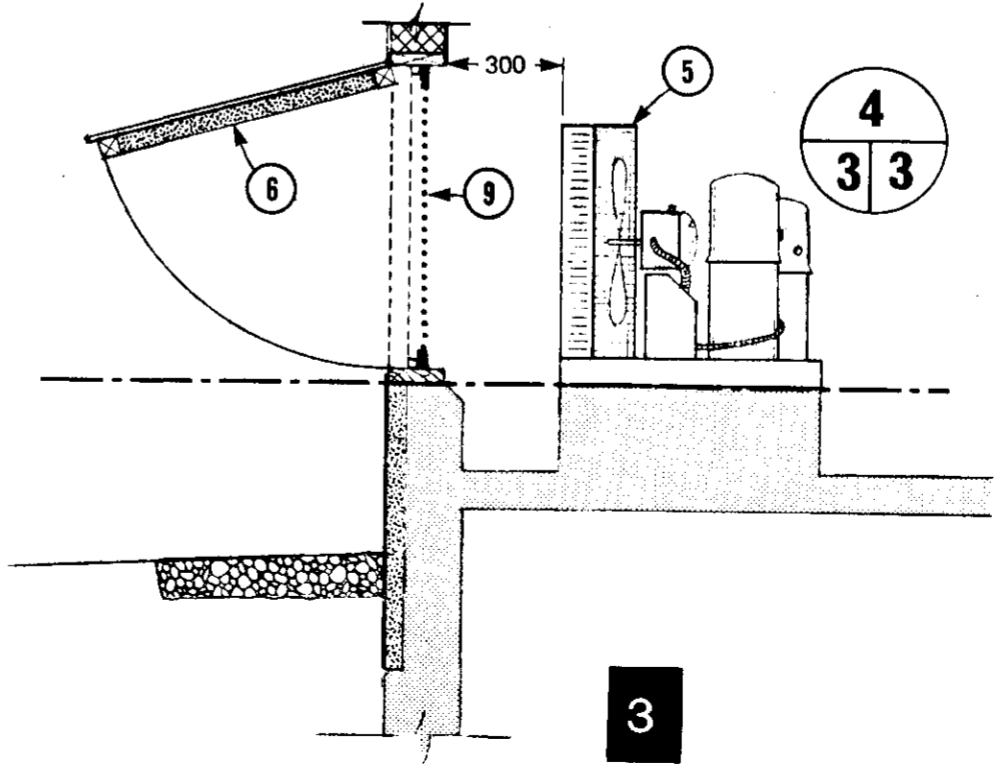
10



4



5
3 3



3

0 400 mm
1:20

- 1 2-speed exhaust fan, controlled with thermostat wired in series with low-off-high manual speed selector switch
- 2 optional small fresh-air intake fan to provide positive pressure in milk room
- 3 alternate ventilation system for compressor located in mechanical room, see notes 4 to 9
- 4 backdraft louvers, inside weather hood and exhaust fan to exceed fan capacity of compressor unit 5; control fan with 3-position switch indicating "on automatic" (with milk cooler), or "off," or "on manual", weather hood closed for winter, open for summer
- 5 milk cooler condensor unit
- 6 rectangular wall opening at least twice the face area of condensor coil unit; hinged door with 50 mm insulation is secured open in summer, closed in winter
- 7 300 mm 2-speed fan, control with high/low speed selector switch with off neutral, wired in series with thermostat 8
- 8 farm type thermostat 1500 mm above floor, set to start fan 4 at 16°C in winter
- 9 removable insect screen, clean frequently in summer
- 10 100 mm floor drain with 6 mm steel cover plate, 18 mm holes for drainage. Form sump in concrete with plastic dishpan, cut hole for P-trap. Use temporary 12 mm plywood cover to form rabbet in concrete.

ELECTRICAL

ceiling	wall	
(L)	(L)	Incandescent Lampholder
(L _{wp})	(L _{wp})	Weatherproof Incandescent Lampholder
(F)	(F)	Flourescent Fixture
(O)	(O)	Duplex Convenience Outlet
(O _{wp})	(O _{wp})	Weatherproof Duplex Convenience Outlet
(F)	(F)	Fan Outlet
(M)		Motor
(W)		Water Heater (draw to scale)
(S)		Single Pole Switch
(S ₃)		Three Way Switch
(H)		Fan Forced Heater
(B)		Baseboard Unit Heater
(D)		Distribution Panel
(S _{2hp})		2hp Rated Manual Switch

SYM	REVISIONS	CHECKED	DATE	APPROVED

CANADA
PLAN SERVICE

ELECTRICAL PLAN

DESIGNED <i>JET</i>	DATE 84-01	PLAN
DRAWN BROWN/MORDEN	REVISED	M-2501
TRACED	DETAIL NUMBER	A
CHECKED <i>JAM</i>	ORIGINATES ON SHEET	B
	DRAWN ON SHEET	C
		SHEET 3 OF 17