

- 1 floor plan; floor elevations such as -14" show inches below datum level (top of concrete foundations)
- 2 office, washroom and mechanical equipment room, (if refrigeration is located here, provide ventilation)
- 3 milk room, bulk milk tank with refrigeration, see also ③ sheet 3
- 4 3'-0" x 6'-8" insulated door inside, screen door outside to concrete sidewalk
- 5 self-closing door, glass above, screen below, protect with grill on parlor side
- 6 self-closing door insulated if barn is cold
- 7 hose port at least 6" above floor and grade, window above
- 8 hot and cold mixing faucet
- 9 double sink and drain board, cupboard above
- 10 milk transfer equipment & auto-washing equipment for pipeline
- 11 floor drain with gas trap see ⑩ sheet 3
- 12 window and insulated panel under, both removable for replacement of bulk tank
- 13 2 -60 gal electric water heaters, one warm for cow wash, one hot for equipment wash
- 14 automatic sump pump in pit with cover
- 15 approximately 28'-0" for double-4 or 40'-0" for double-8 parlor (see supplier)
- 16 for over 100 cows, add 4'-0" to ② & ③
- 17 if barn is warm, door is optional; if cold use vacuum operated insulated sliding doors 3'-6" x 6'-8"
- 18 single step up to parlor
- 19 air intake fan w/baffle, manual switch 530 cfm
- 20 optional summer exhaust fan 3500 cfm, manual switch, doors ⑥ & ⑦ closed; provide fresh-air inlet ducted from outdoors to ceiling over operator pit
- 21 3" galvanized pipe curb, or use syphon
- 22 pipe posts, 2" x 8" rub planks

ONE SET OF DRAWINGS & LEAFLETS SHOULD INCLUDE

CPS no.	SHEET no.	
2501	1	Herringbone milking center floor plan (single return alley)
2501	2	Cross & longitudinal section
2501	3	Electrical plan

- AND
- 9324 Stud frame walls
 - 9102 Truss erection and bracing
 - Q-2503 Milking parlor grounding method
- OPTIONAL Roof truss plan, to suit span & snow load

"This plan conforms to the requirements of the Canadian Farm Building Code. The user of this plan must ensure that the design criteria indicated herein will meet all local design conditions, building regulations and special requirements."

SYM	REVISIONS	CHECKED	DATE	APPROVED

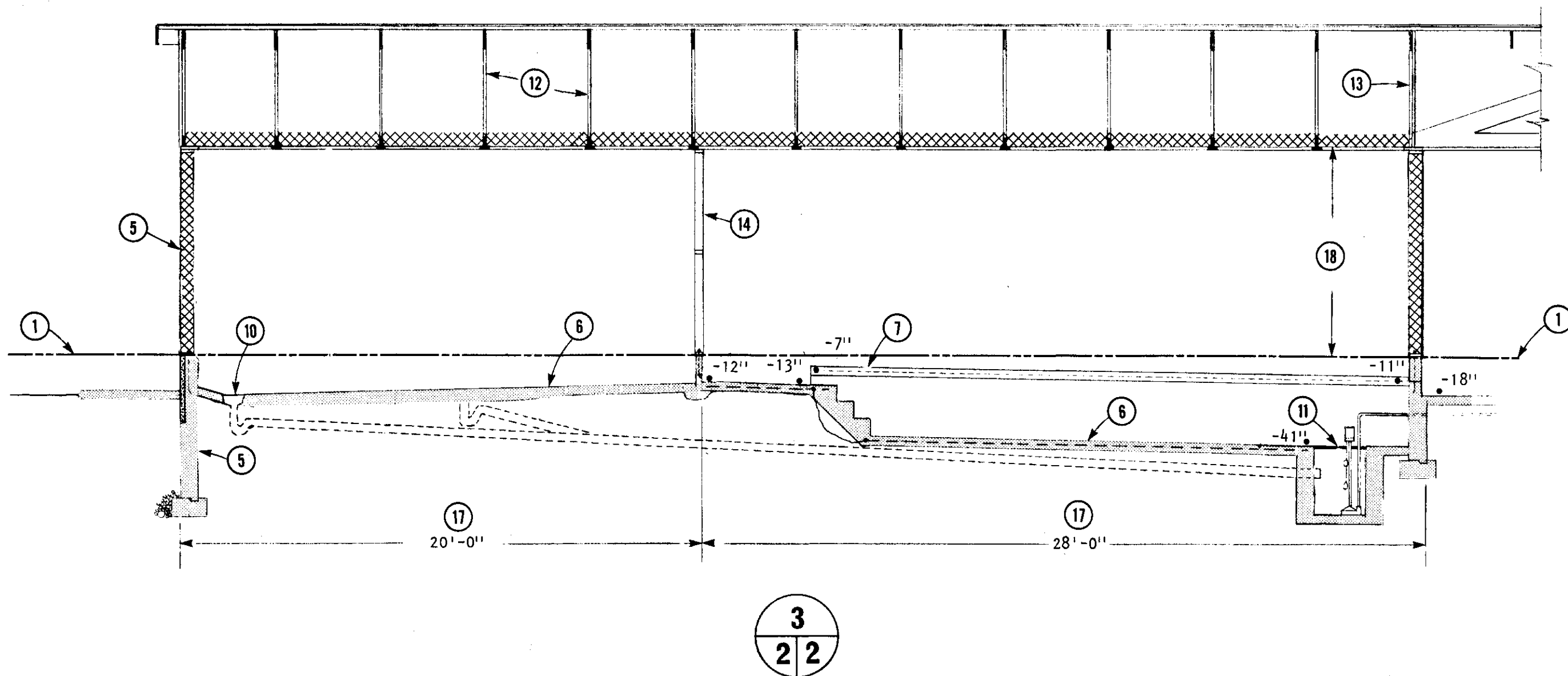
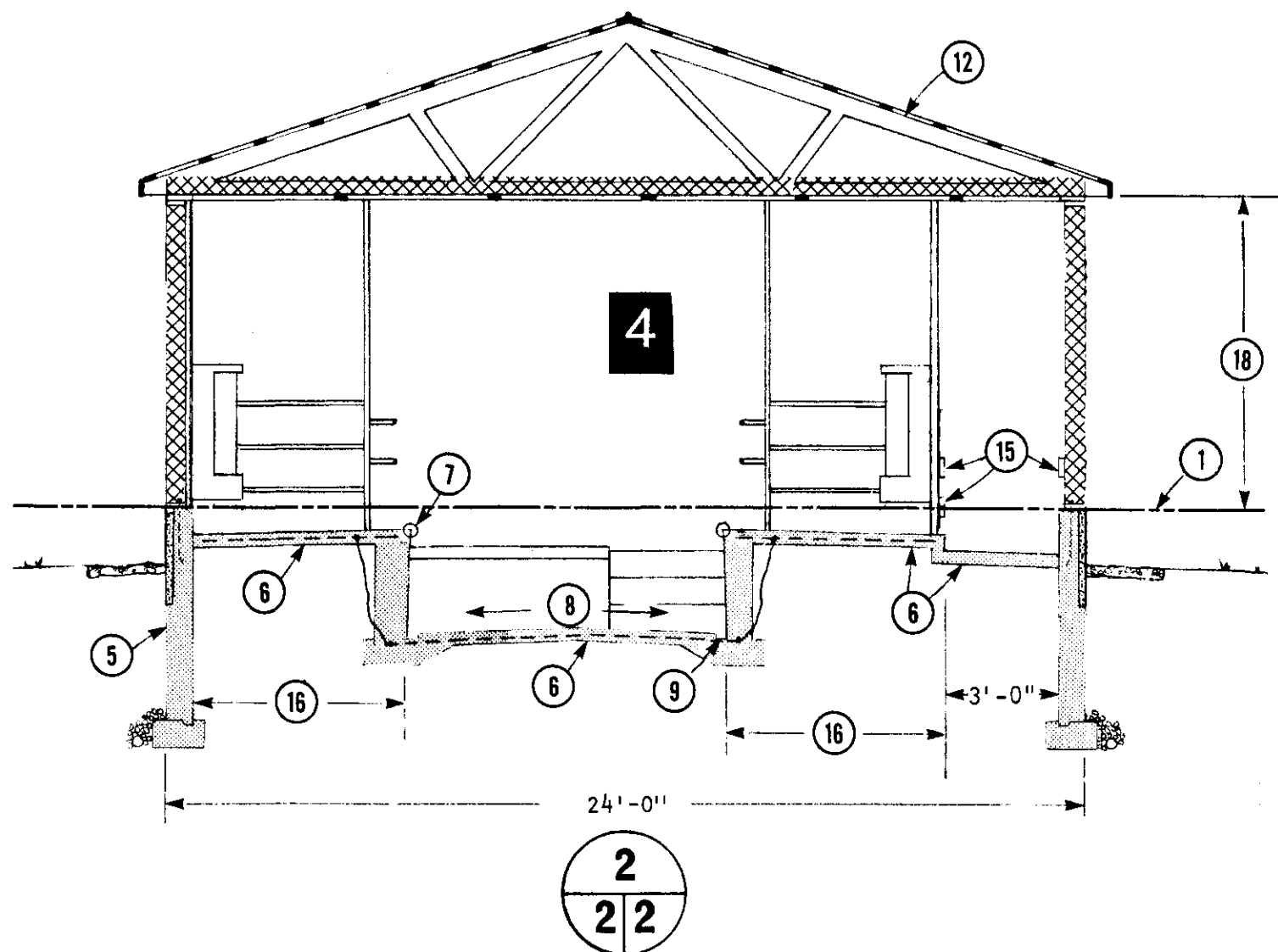
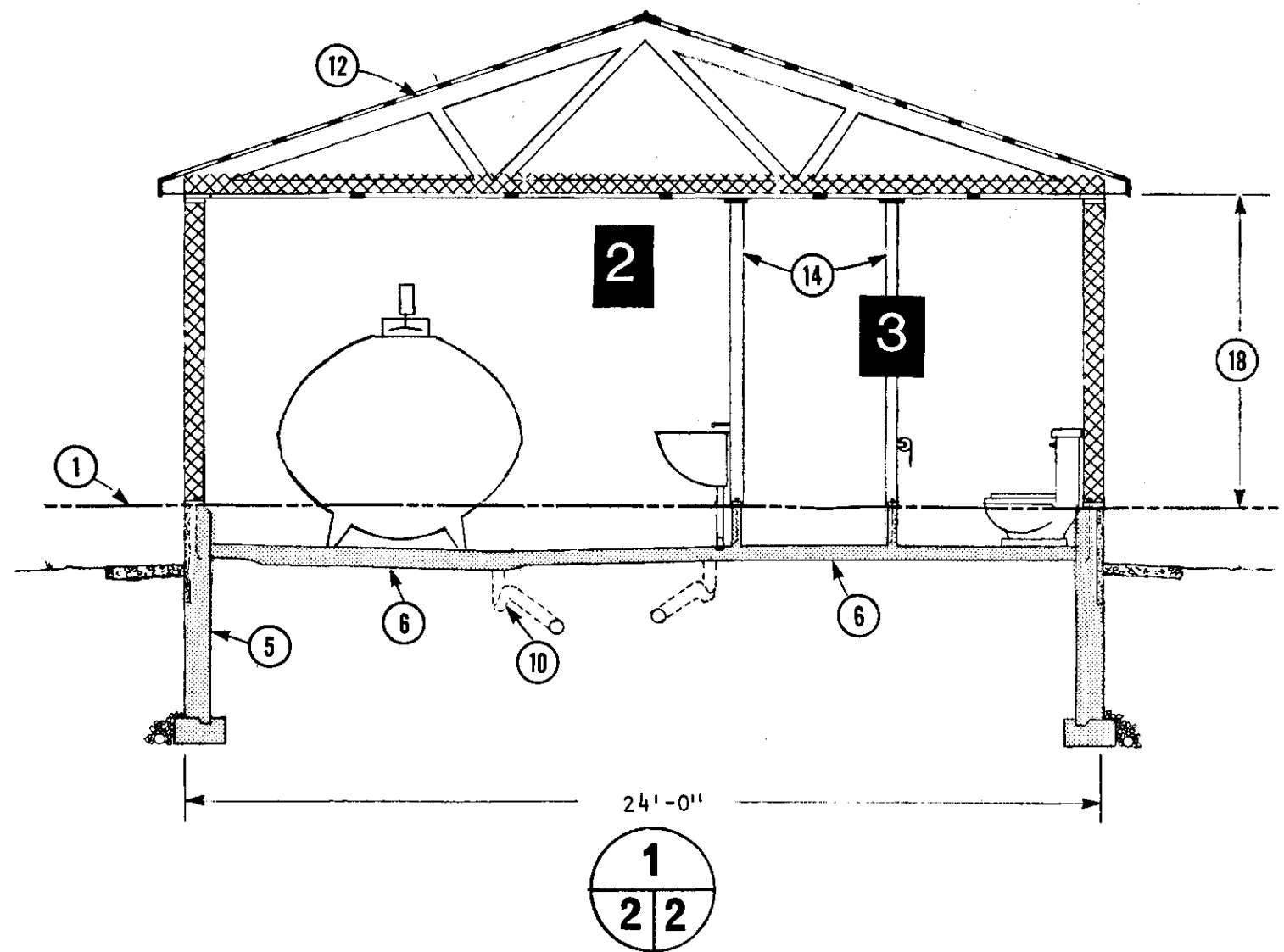
CANADA
PLAN SERVICE

HERRINGBONE MILKING CENTER, FLOOR PLAN (SINGLE RETURN ALLEY)

(not to scale)

WARNING
This plan may require structural and other changes to meet local site conditions, climatic loads, user requirements and applicable building regulations (such as the Canadian Farm Building Code). Before construction, the user of this plan is responsible to ensure that all required changes are made.

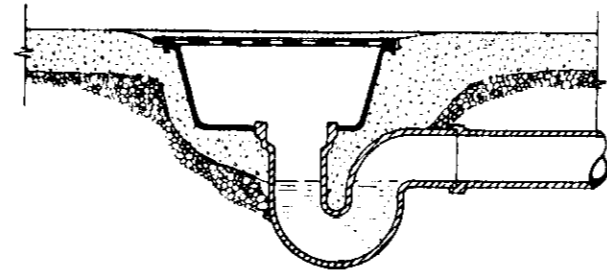
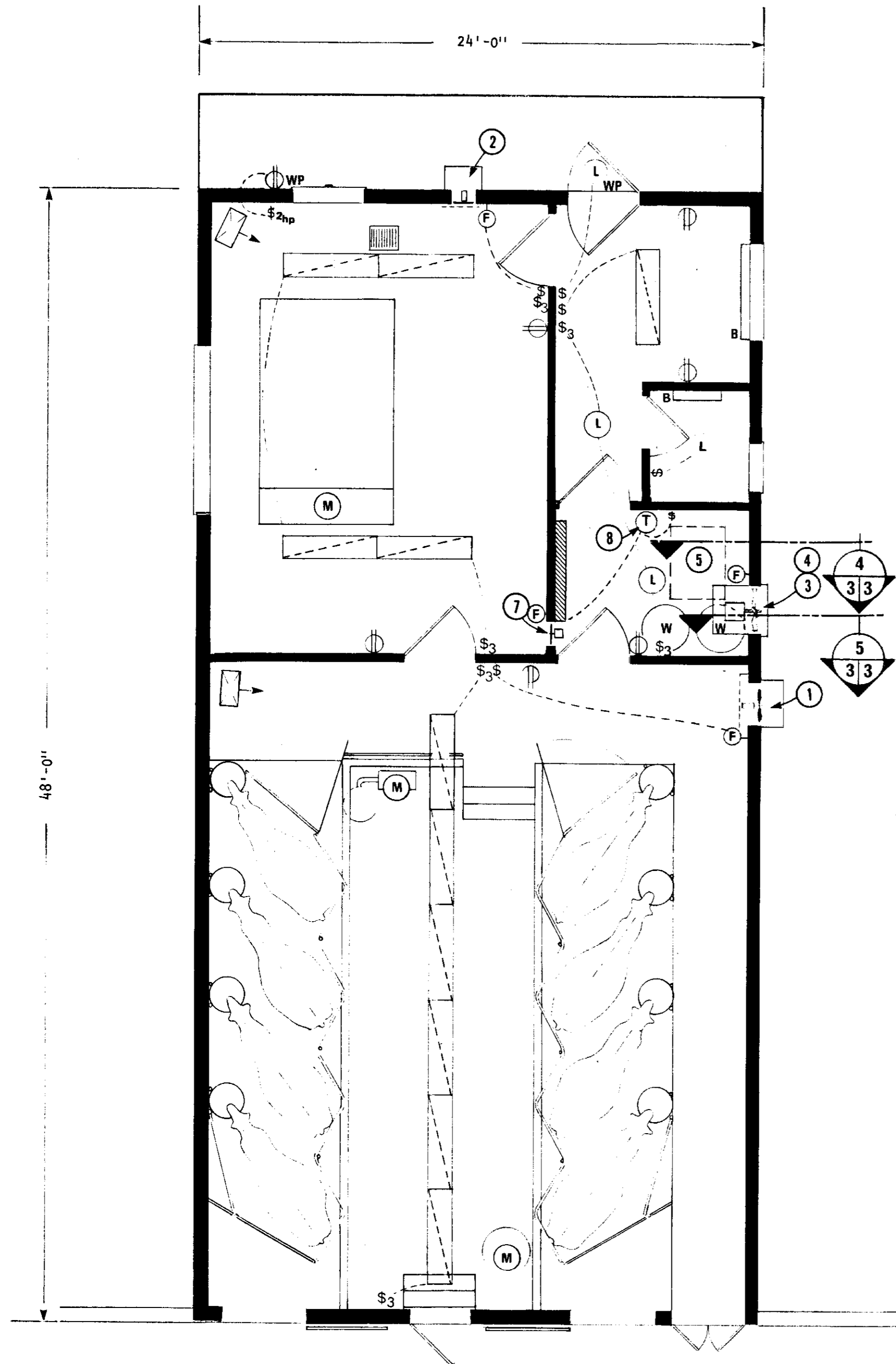
DESIGNED JET	DATE Aug./77	PLAN
DRAWN BROWN/MORDEN	REVISED JAM 84-01	2501
TRACED	DETAIL NUMBER A	SHEET 1 OF
CHECKED JET	ORIGINATES ON SHEET B DRAWN ON SHEET C	



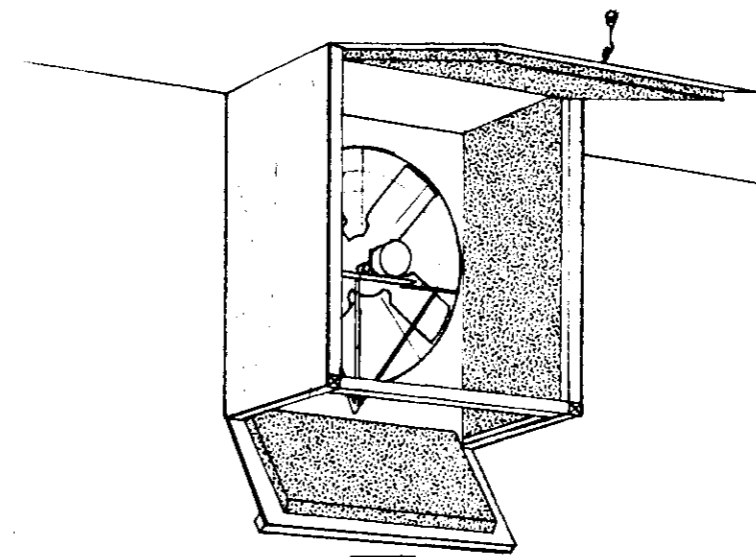
- 1 datum line, top of concrete foundation; floor elevations such as $-.14''$ show inches below datum line, dot shows location
- 2 milk room, height to give at least $3'-0''$ clear from top of bulk tank to ceiling (for removal of measuring rod)
- 3 washroom and hallway to office
- 4 milking parlor (see supplier)
- 5 insulated wall and concrete foundation see plan 9324, R20 insulation in wall, R28 in ceiling, sill CCA pressure-treated & stud butts soaked in wood preservative
- 6 compacted sand or gravel fill $6''$, polyethylene vapour barrier, floor $4''$ of 4000 psi concrete, $6''$ thick floor under bulk tank, for milking parlor grounding see plan Q-2503
- 7 $3''$ galvanized pipe curb, top set $2''$ above stall floor, anchored to floor with $\frac{1}{2}''$ rebar lugs welded $3'-0''$ oc
- 8 floors sloped to drain; see floor plan sheet 1
- 9 $3'' \times 2''$ gutter, optional
- 10 floor drain and gas trap see 10 sheet 3
- 11 concrete sump pit with cover
- 12 trusses $24'-0''$ span, $04'-0''$ oc
- 13 join to dairy barn, construction varies
- 14 interior partitions $6''$ concrete block, or $4''$ stud frame; if wood frame, soak sill and bottom of studs with preservative, provide space over interior partitions as per camber indicated on truss plan
- 15 $2'' \times 8''$ rub planks @ $18''$ and $3'-0''$ from floor, secure to stallpipe posts with U-bolts recessed flush
- 16 dimension varies, see stall equipment supplier
- 17 see also 15 and 16 sheet 1
- 18 $8'-2''$ if ceiling is fastened to $2''$ ceiling strapping, $8'-0''$ if ceiling is fastened directly to trusses (see 9324)

SYM	REVISIONS	CHECKED	DATE	APPROVED

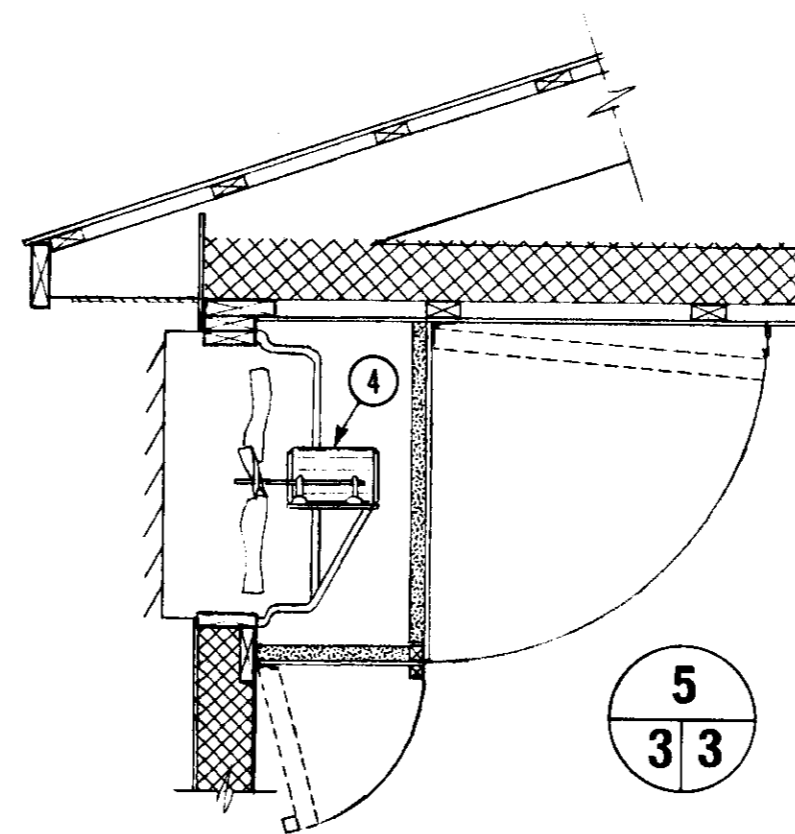
		CROSS & LONGITUDINAL SECTION (not to scale)	
DRAWN BROWN/MORDEN	REVISED <i>JAM</i> 84-01	2501	
TRACED	DETAIL NUMBER <i>A</i>	ORIGINATES ON SHEET <i>B</i>	
CHECKED <i>JET</i>	DRAWN ON SHEET <i>C</i>	SHEET 2 OF	



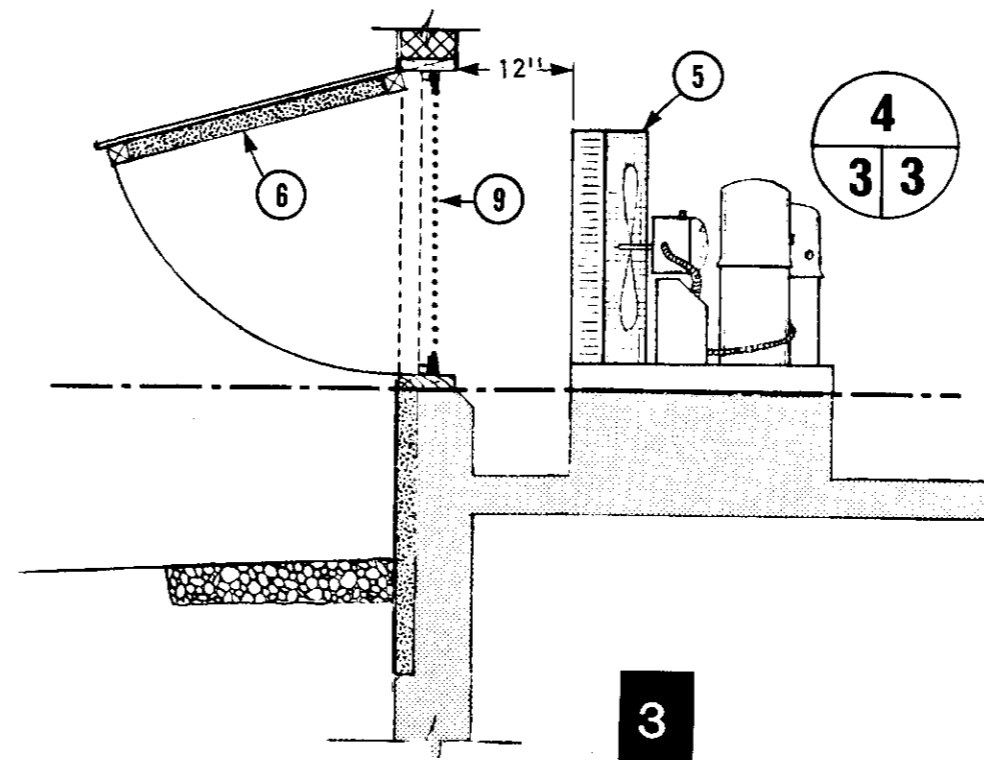
10



4



5
3 3



3

- 1 2-speed exhaust fan, controlled with thermostat wired in series with low-off-high manual speed selector switch
- 2 optional small fresh-air intake fan to provide positive pressure in milk room
- 3 alternate ventilation system for compressor located in mechanical room, see notes ④ to ⑨
- 4 backdraft louvers, inside weather hood and exhaust fan to exceed fan capacity of compressor unit ⑤; control fan with 3-position switch indicating "on automatic" (with milk cooler), or "off," or "on manual"; weather hood closed for winter, open for summer
- 5 milk cooler condensor unit
- 6 rectangular wall opening at least twice the face area of condensor coil unit; hinged door with 2" insulation is secured open in summer, closed in winter
- 7 12" 2-speed fan, control with high/low speed selector switch with off neutral, wired in series with thermostat ⑧
- 8 farm type thermostat 5'-0" above floor, set to start fan ④ at 16°C in winter
- 9 removable insect screen, clean frequently in summer
- 10 4" floor drain with 1/2" steel cover plate, 3/4" holes for drainage. Form sump in concrete with plastic dishpan, cut hole for P-trap. Use temporary 1/2" plywood cover to form rabbet in concrete dishpan

ELECTRICAL

ceiling	wall	
(L)	(L)	Incandescent Lampholder
(L _{wp})	(L _{wp})	Weatherproof Incandescent Lampholder
(F)	(F)	Flourescent Fixture
(O)	(O)	Duplex Convenience Outlet
(O _{wp})	(O _{wp})	Weatherproof Duplex Convenience Outlet
(F)	(F)	Fan Outlet
(M)		Motor
(W)		Water Heater (draw to scale)
(S)		Single Pole Switch
(S ₃)		Three Way Switch
(FH)		Fan Forced Heater
(BH)		Baseboard Unit Heater
(DP)		Distribution Panel
(S _{2hp})		2hp Rated Manual Switch

SYM	REVISIONS	CHECKED	DATE	APPROVED
-----	-----------	---------	------	----------

CANADA PLAN SERVICE

ELECTRICAL PLAN

(not to scale)

DESIGNED JET	DATE Aug./77	PLAN
DRAWN BROWN/MORDEN	REVISED JAM 84-01	2501
TRACED	DETAIL NUMBER A	SHEET 3 OF
CHECKED JET	DRAWN ON SHEET C	