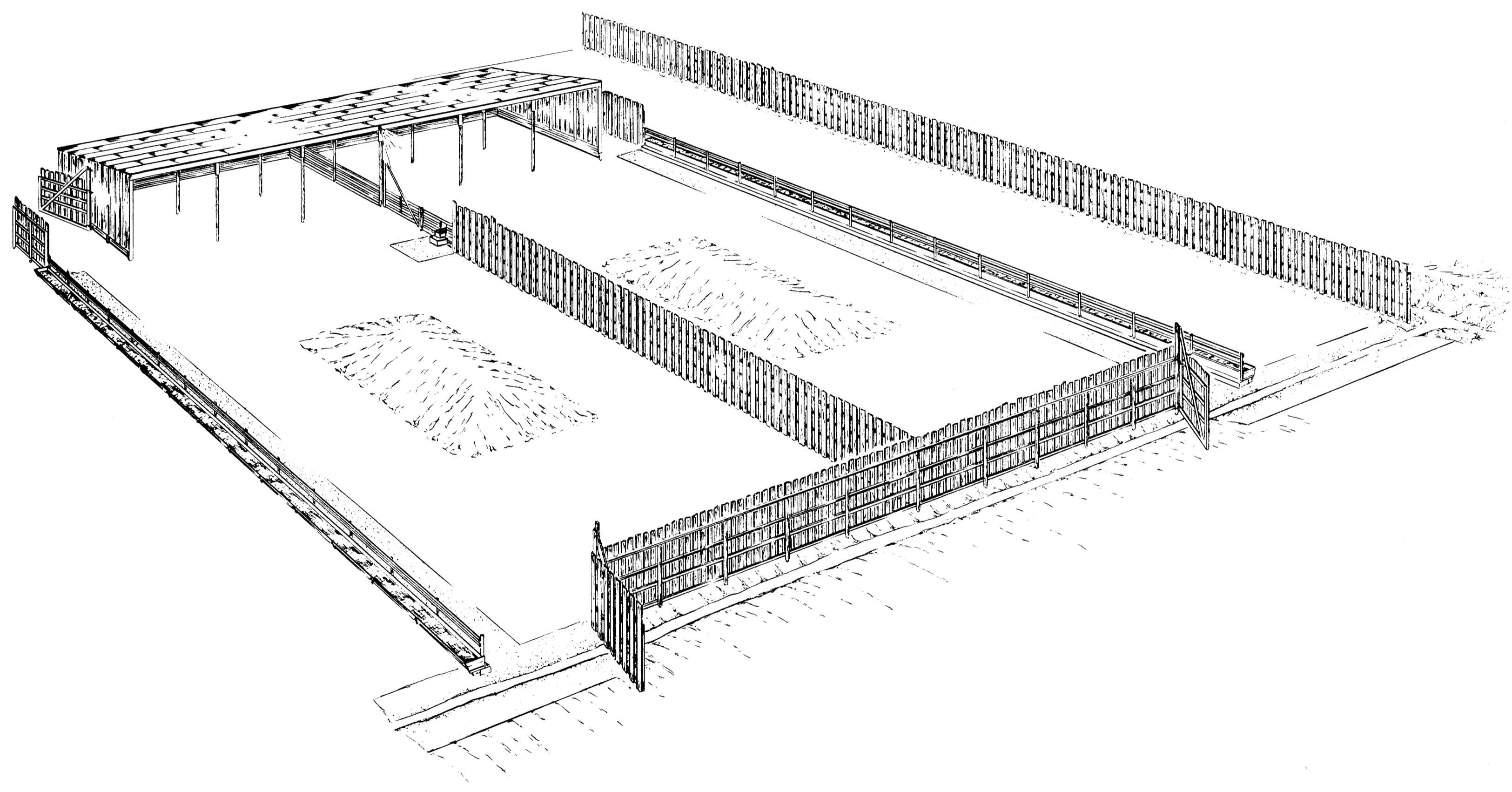



1 include leaflet 4122 for management information

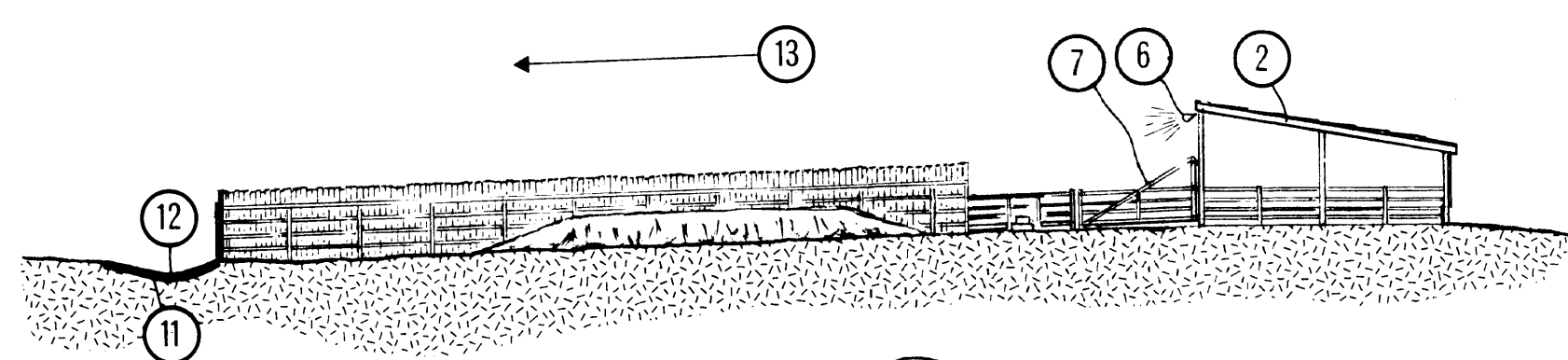
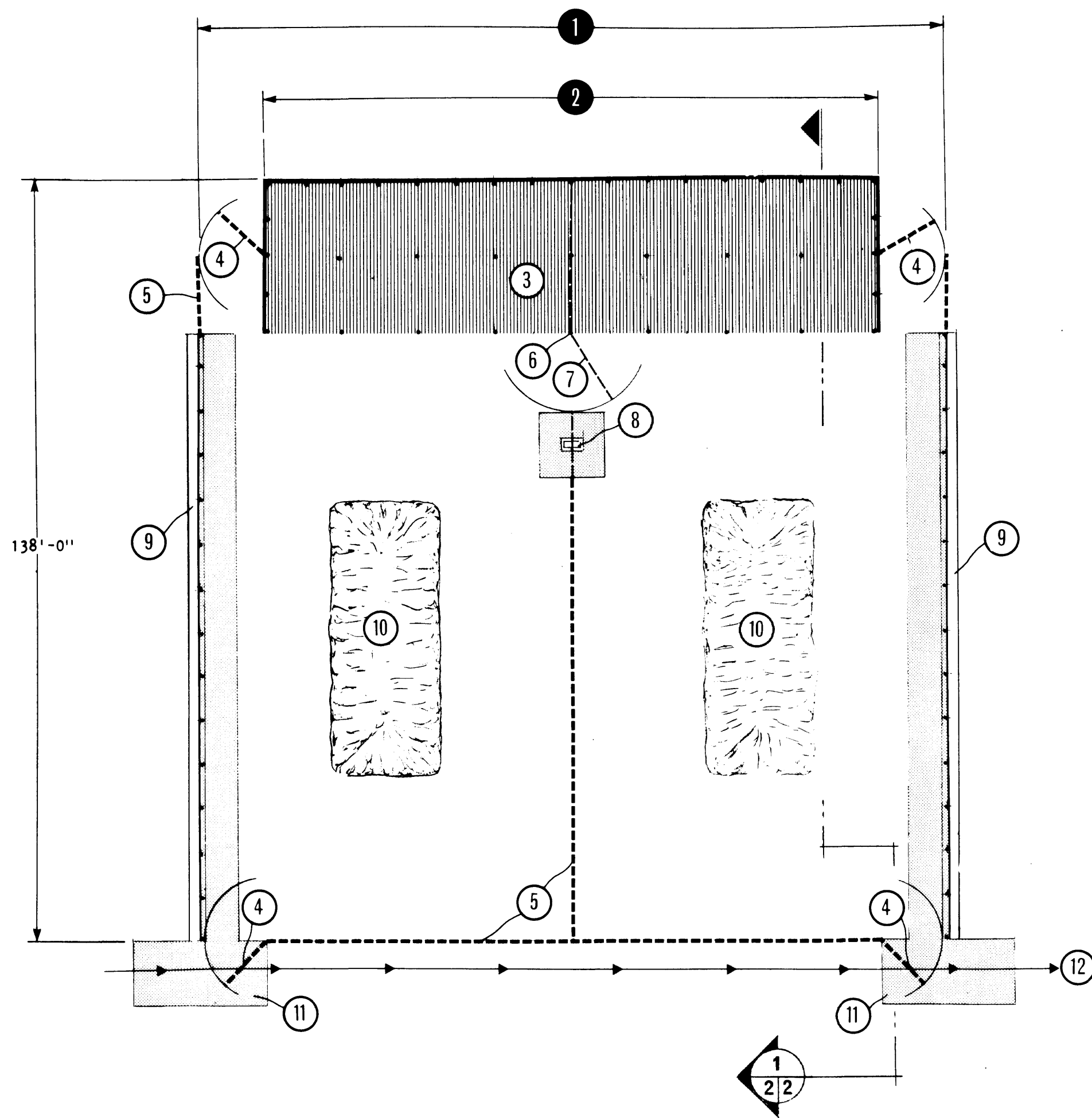


WARNING
This plan may require structural and other changes to meet local site conditions, climatic loads, user requirements and applicable building regulations (such as the Canadian Farm Building Code). Before construction, the user of this plan is responsible to ensure that all required changes are made.

SYM	REVISIONS	CHECKED	DATE	APPROVED

 CANADA PLAN SERVICE	SHEEP DRYLOT UNIT	
--	-------------------	--

DESIGNED E. HARDER	DATE AUG 75	PLAN 4122
DRAWN LEO BLAIS	REVISED	
TRACED	DETAIL NUMBER A	SHEET 1 OF 2
CHECKED J. E. T.	ORIGINATES ON SHEET B DRAWN ON SHEET C	



1
2 2
1" = 20'-0"

- 1 SHEEP DRYLOT UNIT
unit "A" 136'-0" x 138'-0", see leaflet 4122
unit "B" 108'-0" x 138'-0", see leaflet 4122
- 2 pole frame sheep shed, see plan 4111
unit "A" to be 112'-0" (8 multiples of 14'-0")
unit "B" to be 84'-0" (8 multiples of 14'-0")
- 3 partition to be open fence, leaflet 4813;
if barn is over 112' long, use porous windbreak
fence, plan 8363
- 4 12' gate to match 8' windbreak fence 5
- 5 windbreak fence, 8' high, 20% porosity,
see plan 8363; for snow protection add a 50%
porous snow fence or tree shelter belt about
150' upwind (not shown on plan)
- 6 flood light under eave directed towards
waterer 8
- 7 14' fence gate to match partition 3
- 8 electrically heated waterer, (see
manufacturer), concrete pad
- 9 fenceline feeder, see leaflet 4616 and/or 4617,
optional 6' wide paving sloped 1"/12" from feeder
- 10 bedded mound, 20' x 50' approx.
- 11 paved V-shaped waterway at traffic crossing
- 12 contaminated runoff to approved detention
- 13 lot slope, 2% to 8%

SYM	REVISIONS	CHECKED	DATE	APPROVED
		SHEEP DRYLOT UNIT		
DESIGNED BY	HARDER	DATE	AUG 75	PLAN
DRAWN BY	LEO BLAIS	REVISED		4122
TRACED		DETAIL NUMBER	A	
CHECKED	J.E.T.	ORIGINATES ON SHEET	B	
		DRAWN ON SHEET	C	SHEET 2 OF 2