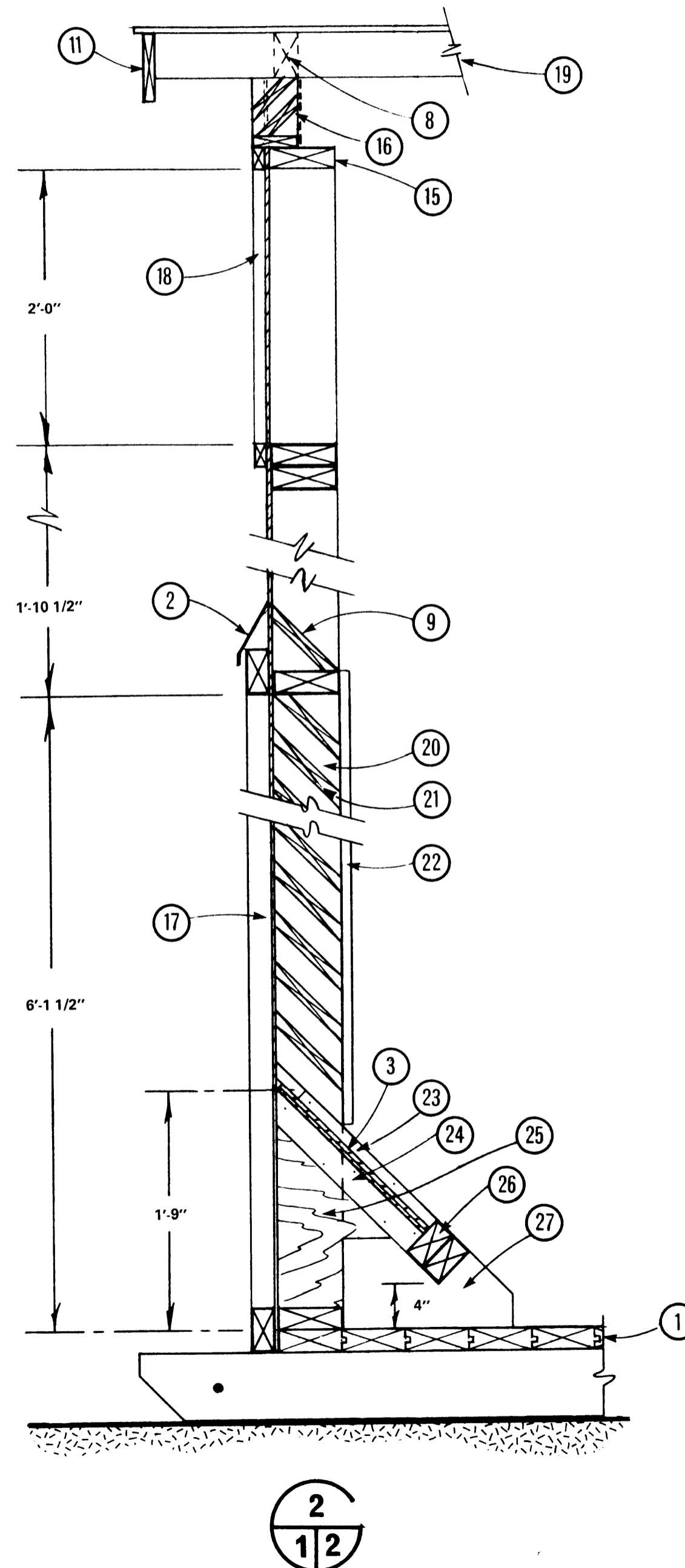
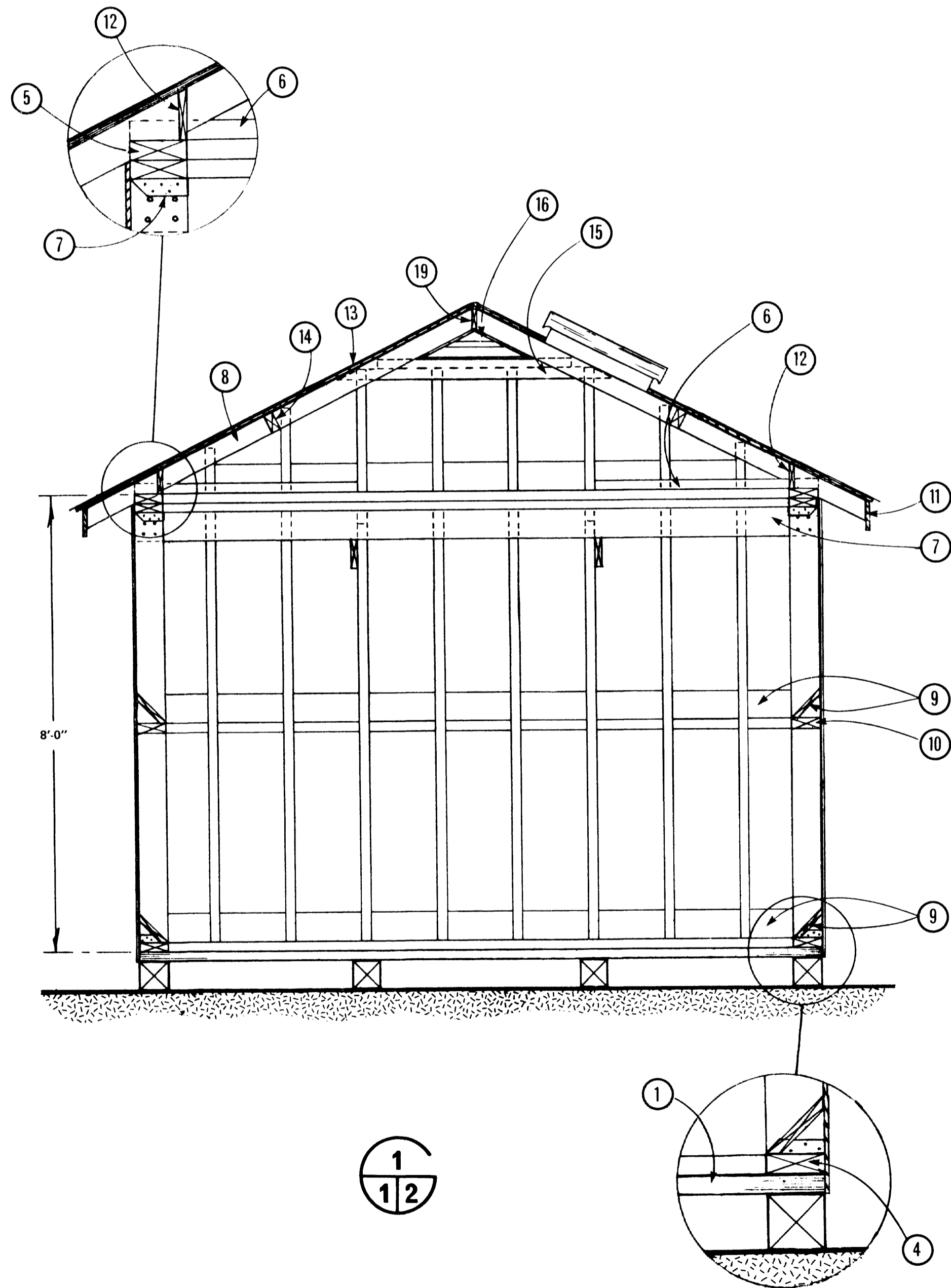


1. grade
2. top of floor
3. top of plate
4. roof hatch - recommend prefabricated metal hatches available from grain bin manufacturers
5. door - 1'-10 1/4" x 2'-0"
6. 3/8" plywood siding nailed with 2" spiral galv. nails @ 3" oc
7. door - 1'-10" x 6'-0"
8. corner mould
9. 6" x 6" x 18'-0" pressure treated skid
10. 2" x 6" studs @ 1'-0" oc No.2 spruce or No.2 Douglas fir 16" oc
11. 2" x 6" corner studs, nailed together with 5" spiral galv. nails @ 4'-0" oc (staggered)
12. diagonal corner brace at top of wall, see (6) sheet 2
13. flooring see (1) sheet 2

WARNING
 This plan may require structural and other changes to meet local site conditions, climatic loads, user requirements and applicable building regulations (such as the Canadian Farm Building Code). Before construction, the user of this plan is responsible to ensure that all required changes are made.

revised and re - numbered (was 7200)				
SYM	REVISIONS	CHECKED	DATE	APPROVED
CANADA PLAN SERVICE		PORTABLE GRANARY (1,300 BUSHELS)		
DESIGNED	DATE 79-04	PLAN 7123		SHEET 1 OF 2
DRAWN B.M.C.	REVISED			
TRACED	DETAIL NUMBER	A ORIGINATES ON SHEET B DRAWN ON SHEET C		
CHECKED J.A.M.	DETAIL NUMBER			



1. 2" x 6" T & G floor nailed to each skid with 2 - 3 1/2" galv. spiral nails
2. door flashing
3. 3/4" plywood slide (removable)
4. 2" x 6" sill fastened to studs with 675lb. capacity joist hanger, nail to floor (1) with 5" spiral galvanized nails @ 2" oc (staggered)
5. 2" x 6" bottom plate nailed to studs with 3 - 4" spiral nails, nail top plate to bottom plate with 4" spiral nails @ 4" oc
6. 2" x 6" diagonal corner brace nailed to plate at each end with 5 - 4" spiral galv. nails
7. 2 - 2" x 6" x 12'-0" cross ties and 3 - 2" x 6" x 16'-0" longitudinal ties @ 4'-0" oc, fasten to stud with 4 - 1/2" bolts each end; fasten bolted studs to plate with 675 lb. capacity joist hanger in addition to (5) nailing
8. 2" x 4" rafters @ 2'-0" oc, notch to suit plate (5)
9. 1" x 6" cant strip
10. 2" x 6" blocking
11. 1" x 6" fascia
12. 1" x 6" filler
13. roof cladding, asphalt shingles over 3/8" plywood or corrugated galv. steel over 2" x 3" purlins @ 2'-0" oc max.
14. 2" x 4" blocking @ plywood joint (used only if asphalt roofing applied)
15. 1" x 4" x 5'-0" tie @ 2'-0" oc
16. screened louver, (1/2" x 1/2" mesh) 1" x 4" frame and slats
17. 2" x 4" door casing
18. 1" x 2" door casing
19. 2" x 4" ridgeboard
20. 1" x 2" guides
21. 1" x 8" slats @ 45°, removable
22. 1" x 6" stop
23. 1" x 1" guide
24. 1" x 2" guide
25. 3/4" plywood sides
26. 2 - 2" x 4" stop
27. 2" x 8" blocking

revised and re-numbered (was 7200)			
SYM	REVISIONS	CHECKED	DATE
		SECTION & DETAILS	
DESIGNED	DATE 78-04	PLAN 7123	
DRAWN B.M.C.	REVISED		
TRACED	DETAIL NUMBER		
CHECKED J.A.M.	ORIGINATES ON SHEET A		
	ORIGINATES ON SHEET C	SHEET 2 OF 2	