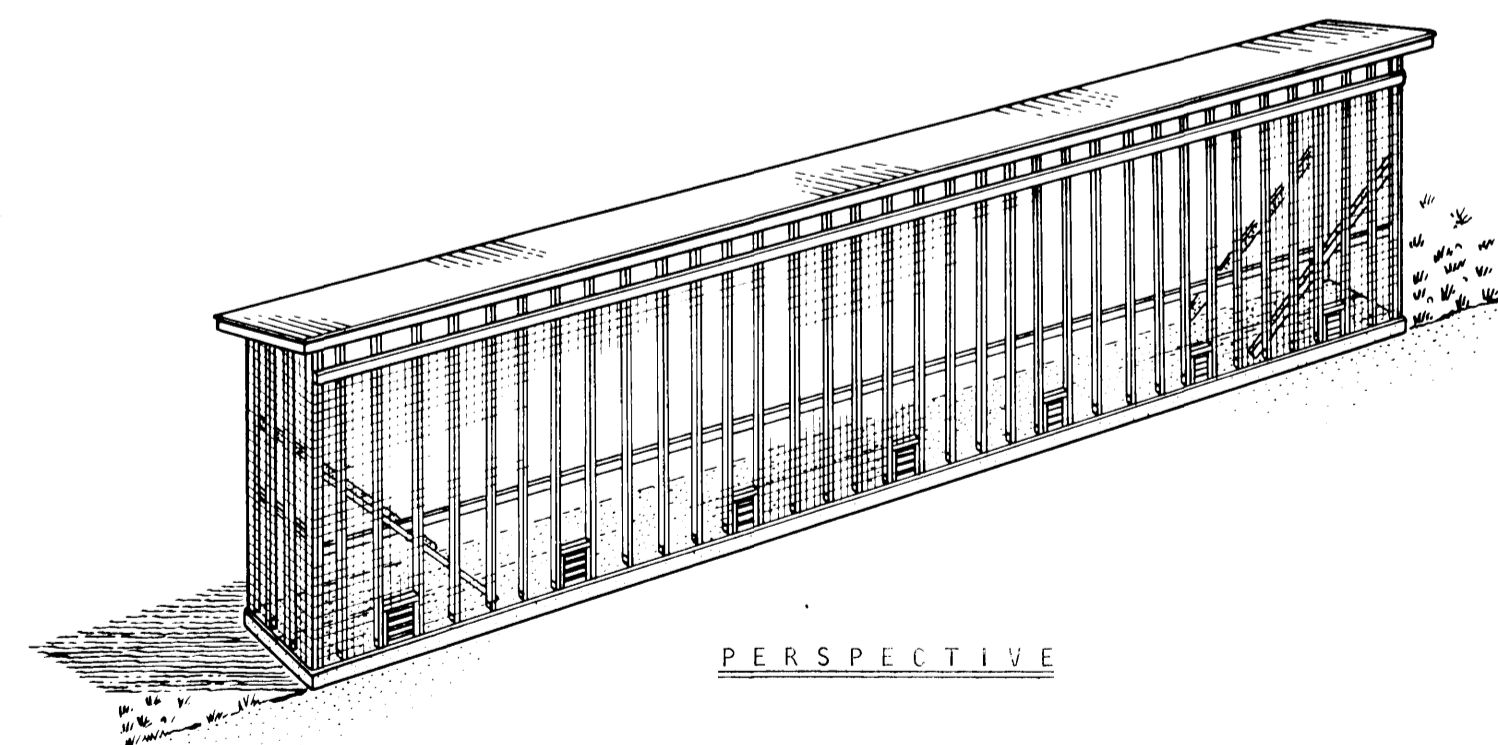


PLAN VIEW
SCALE: 1/8" = 1'-0"

BILL OF MATERIALS

| | |
|---|------------------------|
| <u>Concrete</u> | |
| Floor | 18 Cu. Yds. |
| <u>Related Materials</u> | |
| Sand | 7½ Cu. Yds. |
| Vapor Barrier (4 Mil. Polyethylene).... | 1075 Sq. Ft. |
| Perimeter Reinforcing Rods | ¾" Dia. x 404 Lin. Ft. |
| Reinforcing | ¾" Dia. x 9'-6" |
| Steel Stud Anchor (76 Required)..... | 3/16"x4"x177 Lin. Ft. |
| Machine Bolts, Washers & Nuts | 228 - ½" Dia. x 2½" |
| <u>Lumber Walls</u> | |
| Studs | 40 - 2"x6"x20'-0" |
| " | 36 - 2"x6"x18'-0" |
| " | 2 - 2"x4"x20'-0" |
| " | 2 - 2"x4"x18'-0" |
| Stud Ties | 1 - 4"x4"x14'-0" |
| " | 17 - 2"x6"x12'-0" |
| Cross Ties | 68 - 1"x10"x10'-0" |
| Girts | 18 - 2"x6"x16'-0" |
| Wind Braces | 4 - 2"x6"x20'-0" |
| Plywood Gussets, Plates & Shims..... | 7 - ¾"x4'-0"x8'-0" |
| <u>Louvered Unloading Openings</u> | |
| Framing..... | 4 - 2"x4"x12'-0" |
| Slats | 7 - 1"x6"x8'-0" |
| <u>Roofing Section - Lumber</u> | |
| Rafters | 36 - 2"x6"x10'-0" |
| Nailing Girts | 42 - 1"x6"x16'-0" |
| Facia | 12 - 1"x8"x16'-0" |
| <u>Exterior Covering</u> | |
| Roofing to Cover | 1056 - Sq. Ft. |
| Welded Wire Mesh (2"x2"x14-14GA.)..... | 3650 - Sq. Ft. |
| <u>Hardware</u> | |
| Nails | As Required |
| Machine Bolts | 4 - ½" Dia. x 1'-0" |

TO CALCULATE CRIB CAPACITY IN TERMS OF SHELLED CORN
EXAMPLE FOR CORN CRIB NO. 7212
SHELLED BUSHELS = VOLUME OF CORN CRIB x 0.4
= 93x7x18x0.4
= 4,687 BU. (APPROX)



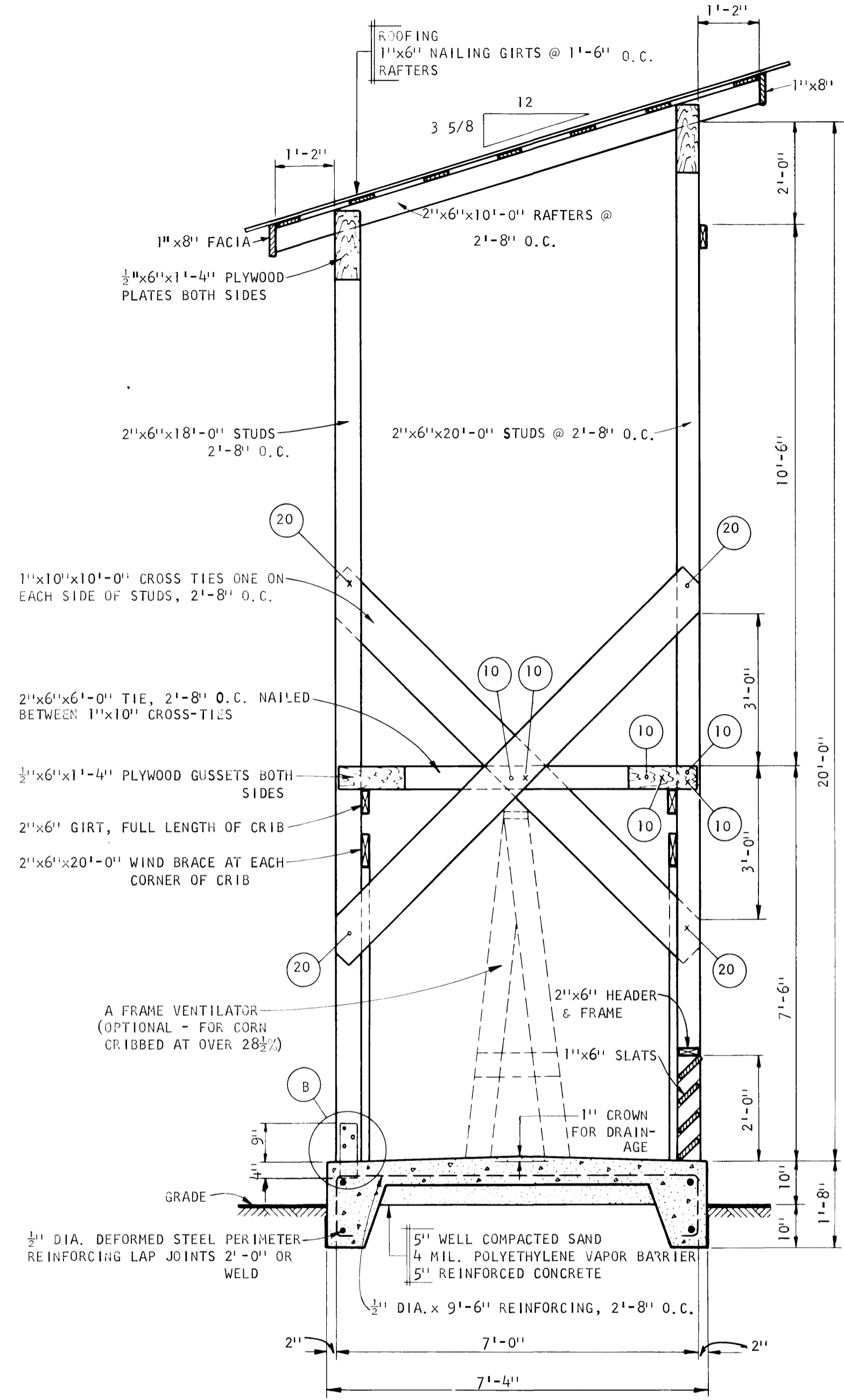
WARNING
This plan may require structural and other changes to meet local site conditions, climatic loads, user requirements and applicable building regulations (such as the Canadian Farm Building Code). Before construction, the user of this plan is responsible to ensure that all required changes are made.

DESIGNED IN ACCORDANCE WITH THE FARM BUILDING STANDARDS OF THE NATIONAL BUILDING CODE.

CANADIAN FARM BUILDING PLAN SERVICE

CORN CRIB

| | | |
|--------------------------|----------------|----------|
| PLANNED BY <i>A.S.L.</i> | SCALE AS SHOWN | PLAN No. |
| DRAWN BY <i>J.K.</i> | SHEET 1 OF 2 | 7212 |
| CHECKED BY <i>J.K.</i> | | |

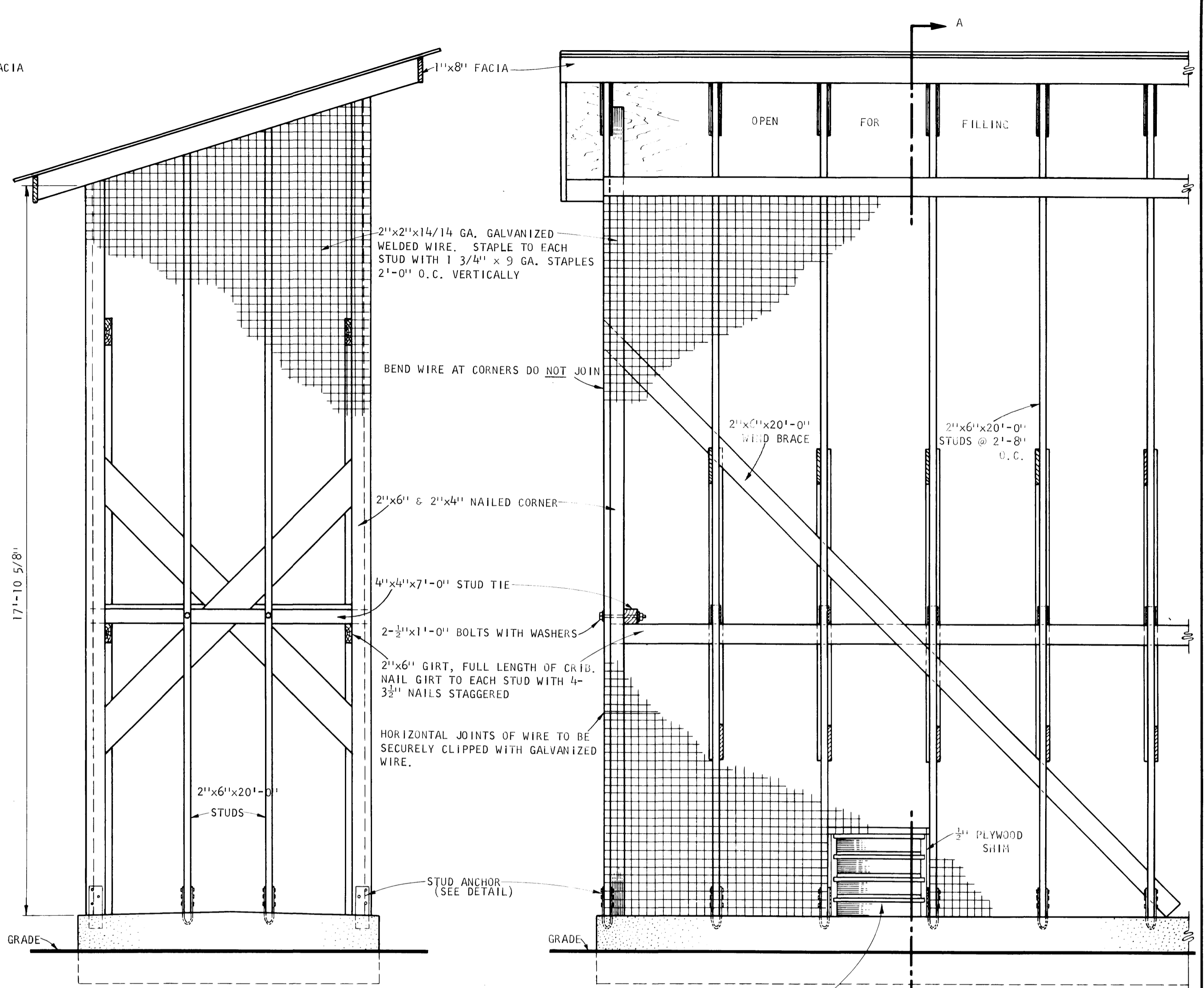


SECTION A-A

NOTE: NO. OF 2 1/2" COMMON NAILS DRIVEN FROM NEAR SIDE IS INDICATED THUS (20) •

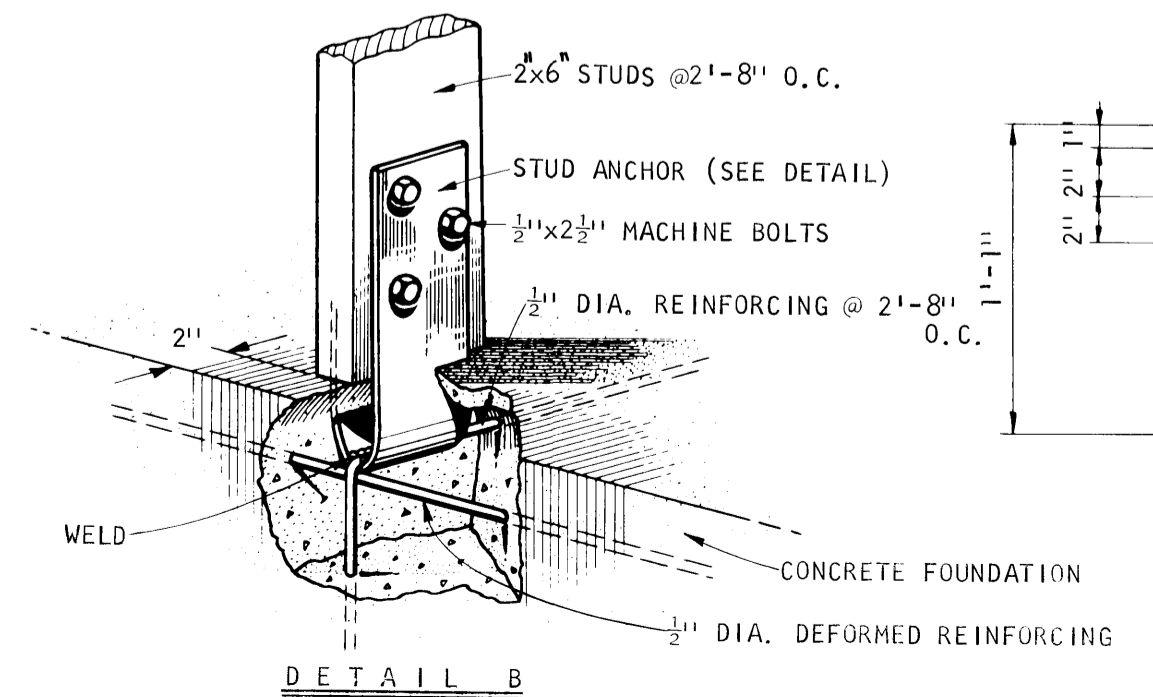
NO. OF 2 1/2" COMMON NAILS DRIVEN FROM FAR SIDE IS INDICATED THUS (20) ×

NOTE: STUDS MAY BE BUTT-SOAKED FOR 24 HOURS IN OIL AND CREOSOTE OR OIL & PENTA, WOOD PRESERVATIVE SOLUTIONS. WOOD TREATMENT SHOULD BE DONE AFTER STUDS ARE CUT TO LENGTH.

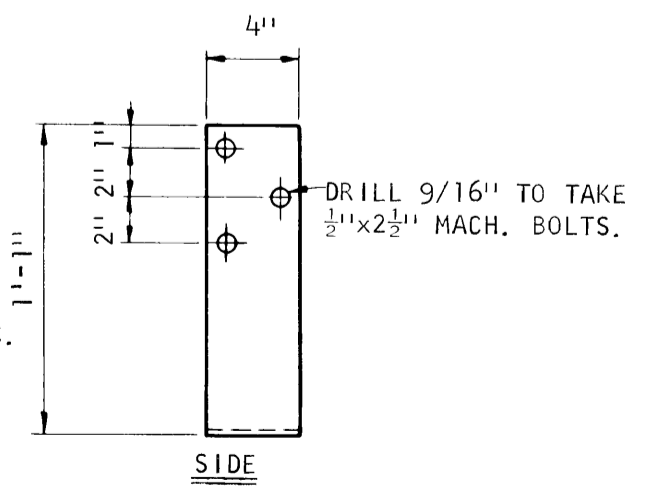


END ELEVATION

FRONT ELEVATION



DETAIL B



DETAIL OF STUD ANCHOR
SCALE: 1 1/2" = 1'-0"

CANADIAN FARM BUILDING PLAN SERVICE

CORN CRIB

| | | |
|-------------------------------|--------------------|---------------|
| PLANNED BY <i>axd</i> | SCALE 1/2" = 1'-0" | PLAN No. 7212 |
| DRAWN BY <i>JX</i> | SHEET 2 OF 2 | |
| CHECKED BY <i>[Signature]</i> | | |