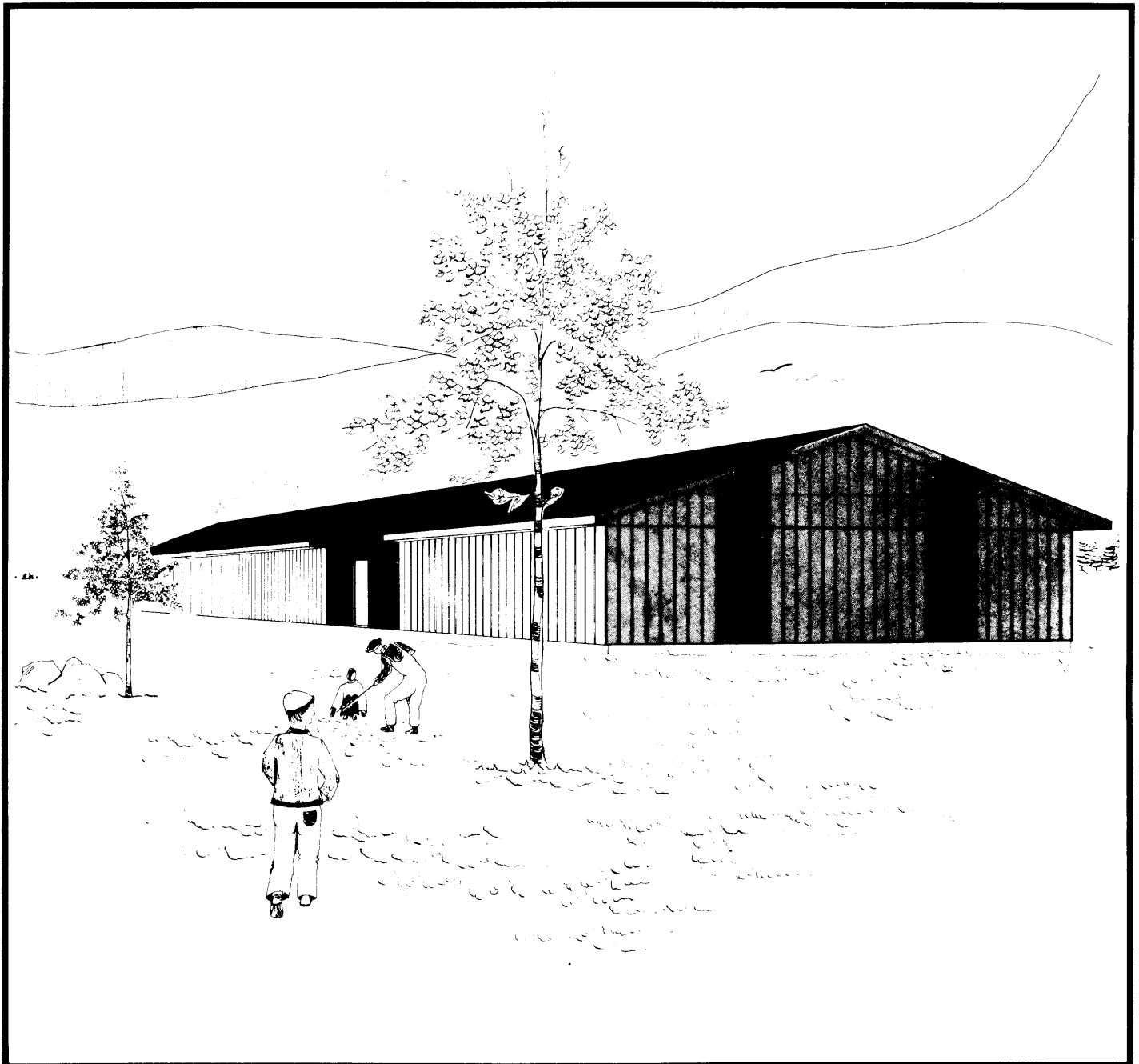


RABBITRY



RABBITRY

PLAN Q-824 (80241 QUEBEC) NEW 79:5

This plan, consisting of five sheets, shows a rabbitry measuring 10,800 mm by 34,800 mm. The rabbitry is divided into four sections.

The first two sections, which have an inside length of 9,400 mm, contain the maternity cages.

The hutches measure 500 mm by 750 mm and comprise a section (100 mm lower than the main section) in which a 238 X 275 X 500 mm nest is located. The kittens leaving the nest can thus return to it easily since the entrance is at the same level as the floor of the hutch. Plan 80240 details the hutch.

The third section comprises the following utility areas:

- an office;
- an area for storing feed carts and a few bags; (The steel silos outside or a wooden silo in the roof space have to be used for feed.)

- a utility area for killing animals sold at the farm; (The area contains a table, a stainless-steel sink and a freezer.)

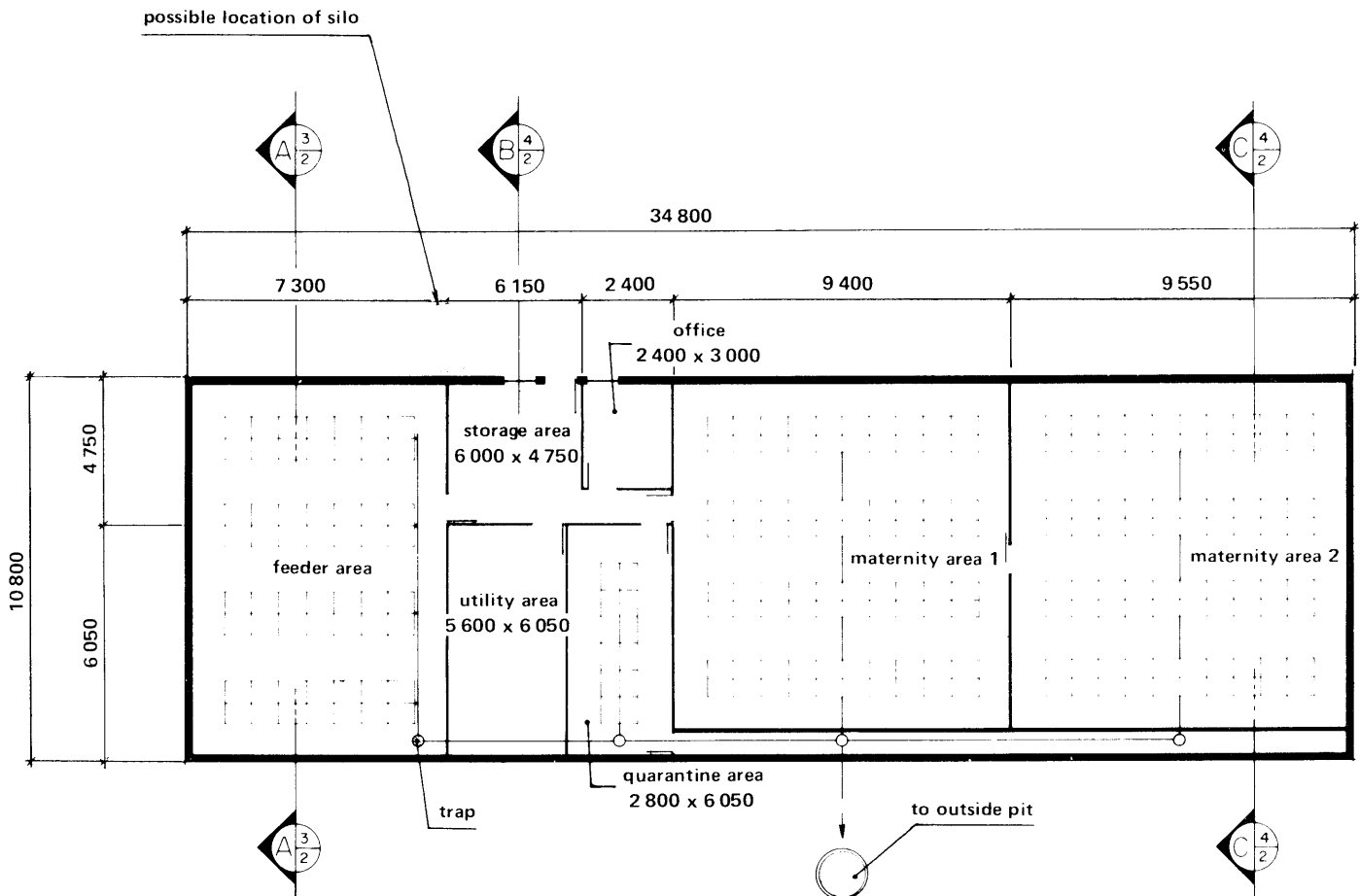
- a quarantine area containing 24 500 X 500 X 375-mm cages. (All rabbits purchased after start-up of operations are kept under observation in this area for 21 to 42 days before being placed in the herd.)

The fourth section, which is 7,300 mm in length, contains 160 600 X 750 X 375-mm cages placed back to back in four rows three storeys high. These hutches contain an average of six young rabbits. The kittens are weaned after five weeks and kept in the feeder area until slaughter at the age of ten or eleven weeks.

The kittens selected for renewing the herd are always kept in the maternity areas.

The feeder area has a conventional system of ventilation but the maternity areas have an air-preheating passage.

Manure is removed by flushing with water and is stored in a sealed tank outside the rabbitry.



feeder area: 4 rows of 42 cages,
3 stories high (see plan 80703)

quarantine area: 1 row of 500 x
500 x 375 mm cages,
2 stories high

maternity areas 1 and 2: 4 rows of 40 cages,
2 stories high (see plan 80240)