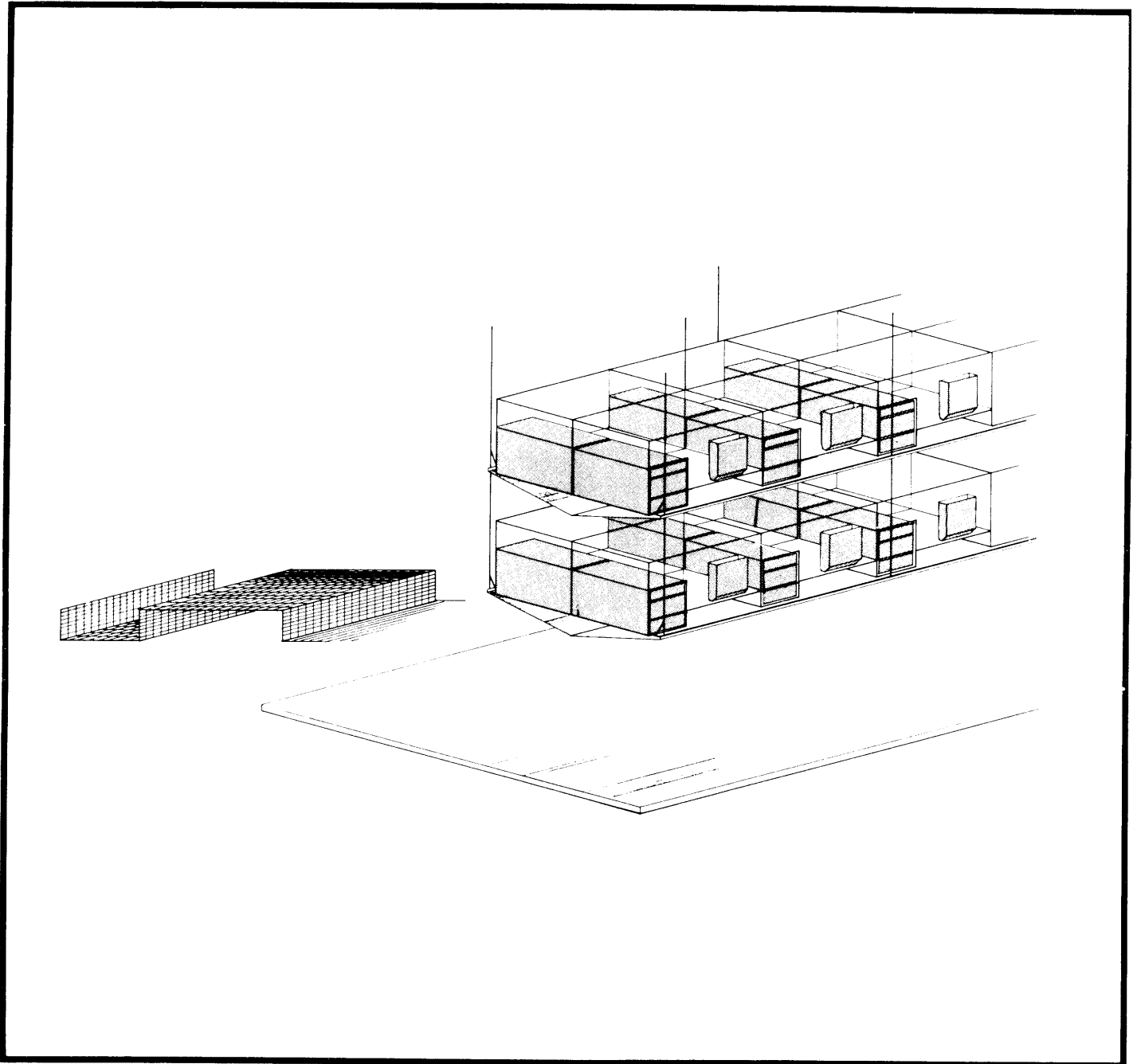


RABBIT HUTCHES



The Canada Plan Service prepares detailed plans showing how to construct modern farm buildings, livestock housing systems, storages and equipment for Canadian Agriculture.

This leaflet gives management information and describes one of these detailed plans. To obtain a copy of the Canada Plan Service detailed plan, contact your local provincial agricultural engineer or extension advisor.

RABBIT HUTCHES

PLAN C2-8246 (PLAN 80240 QUEBEC) NEW 79:5

This plan, consisting of two sheets, details the construction of a maternity cage for rabbits.

The cage is designed for maternity rather than fattening. The hutch is 50 mm deep by 750 mm, long. It is 375 mm high except in the nest section, which is 475 mm high. A 14-gauge 25 x 25-mm mesh is used for the front and sides. In addition, 12 x 25-mm baby-saver wire extends 100 mm up the sides.

A 14-gauge 12 x 25-mm mesh is used for the floor. The floor mesh is folded to take the shape of the cage.

The nest is made of 28-gauge galvanized sheet. The bottom consists of a removable piece of 9-mm plywood. The nest is arranged like a drawer in the hutch. It is lower than the main part of the cage to prevent the kittens from leaving, and because the door is at the same level as the hutch floor, the kittens that leave the nest can get back to it easily. When the kittens are order, the doe can take a rest from their presence by lying on the top of the nest. The nest is completely closed.

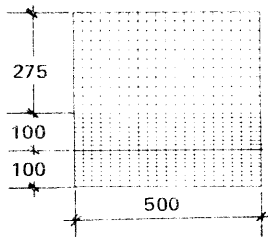
The front of the nest has a movable plate, which is held in place by a wire fastened to the screening of the hutch. The plate is designed to hold an information card and enable the breeder to look into the nest without moving it.

These cages are arranged two storeys high only in order to increase the volume of air per animal and make work easier.

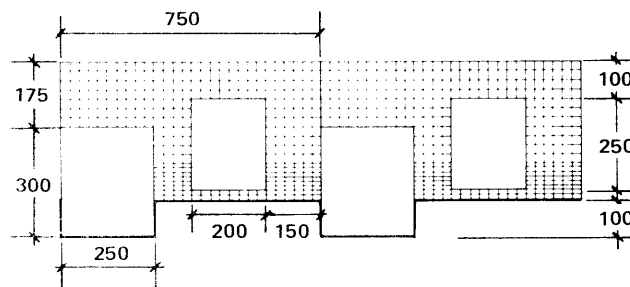
The hatches are cleaned using water and the droppings are flushed into a screened receptacle covered with a 0.5-mm plastic sheet. The manure is stored in a tank outside.

To maintain uniformity in the rabbitry, the same cage will be used for replacement stock, bucks and pregnant does.

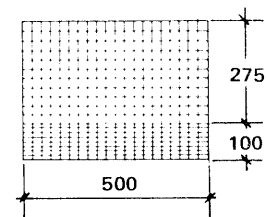
left side



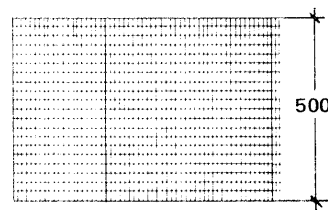
front elevation



right side



note: tree top is made of 14 gage 25 x 25 mm wire; the sides are made of 14 gage wire, and 12 x 25 mm baby-saver wire also extends 100 mm up the sides; the bottom is made of 14 gage 12 x 25 mm wire



bottom

dropping receptacle; 14 gage 25 x 25 mm wire covered with a 15 mm plastic sheet

