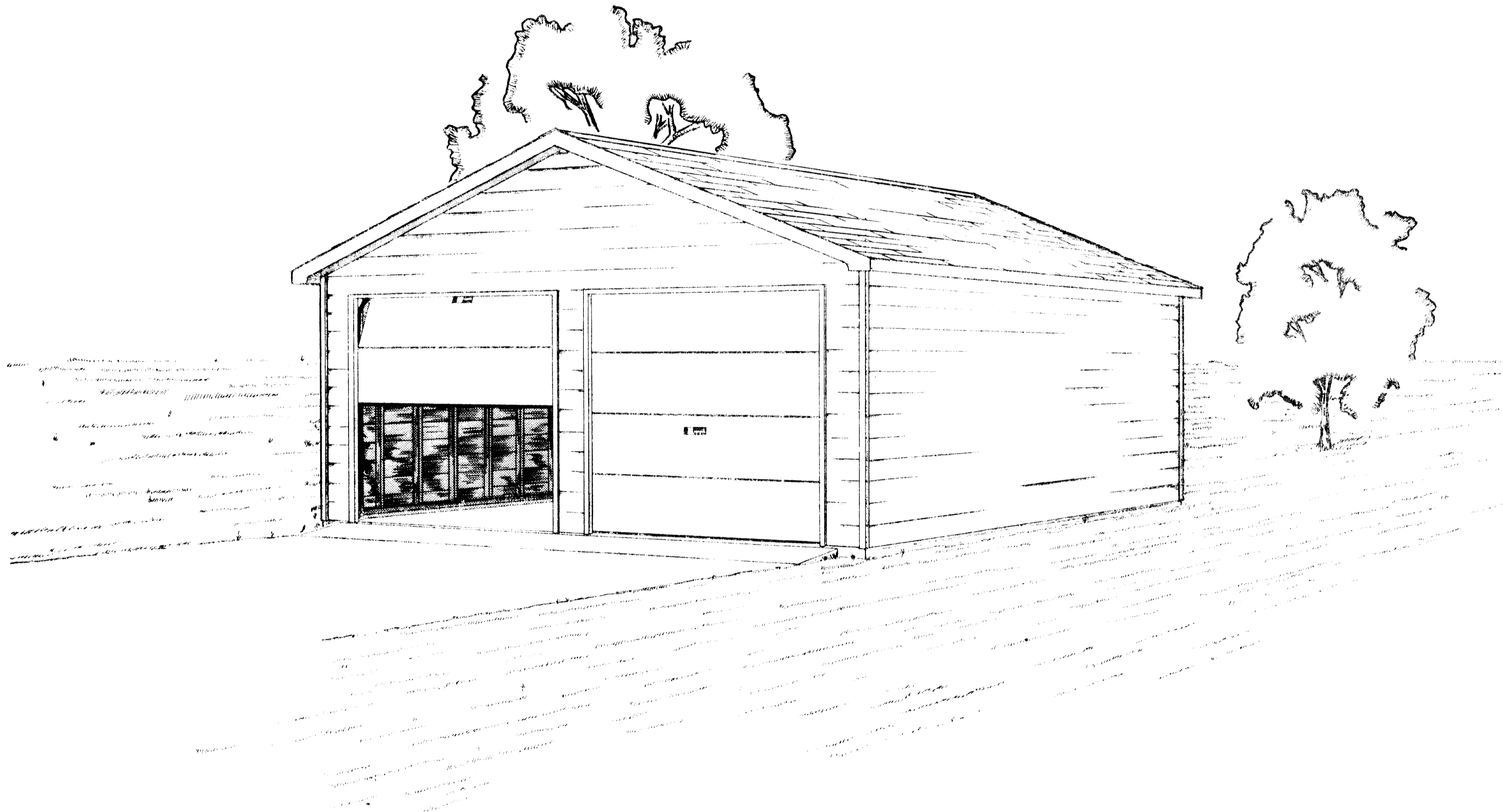
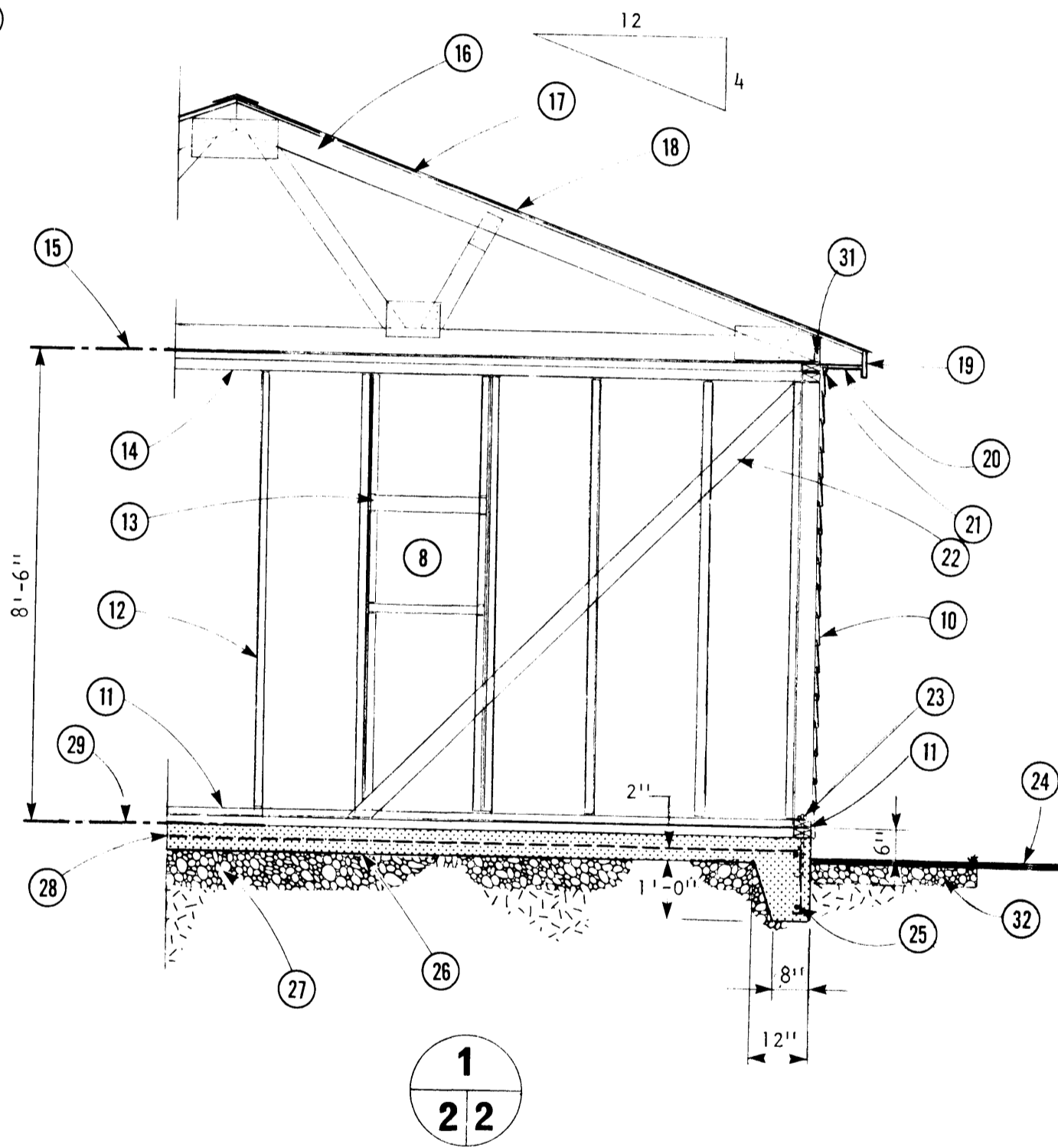
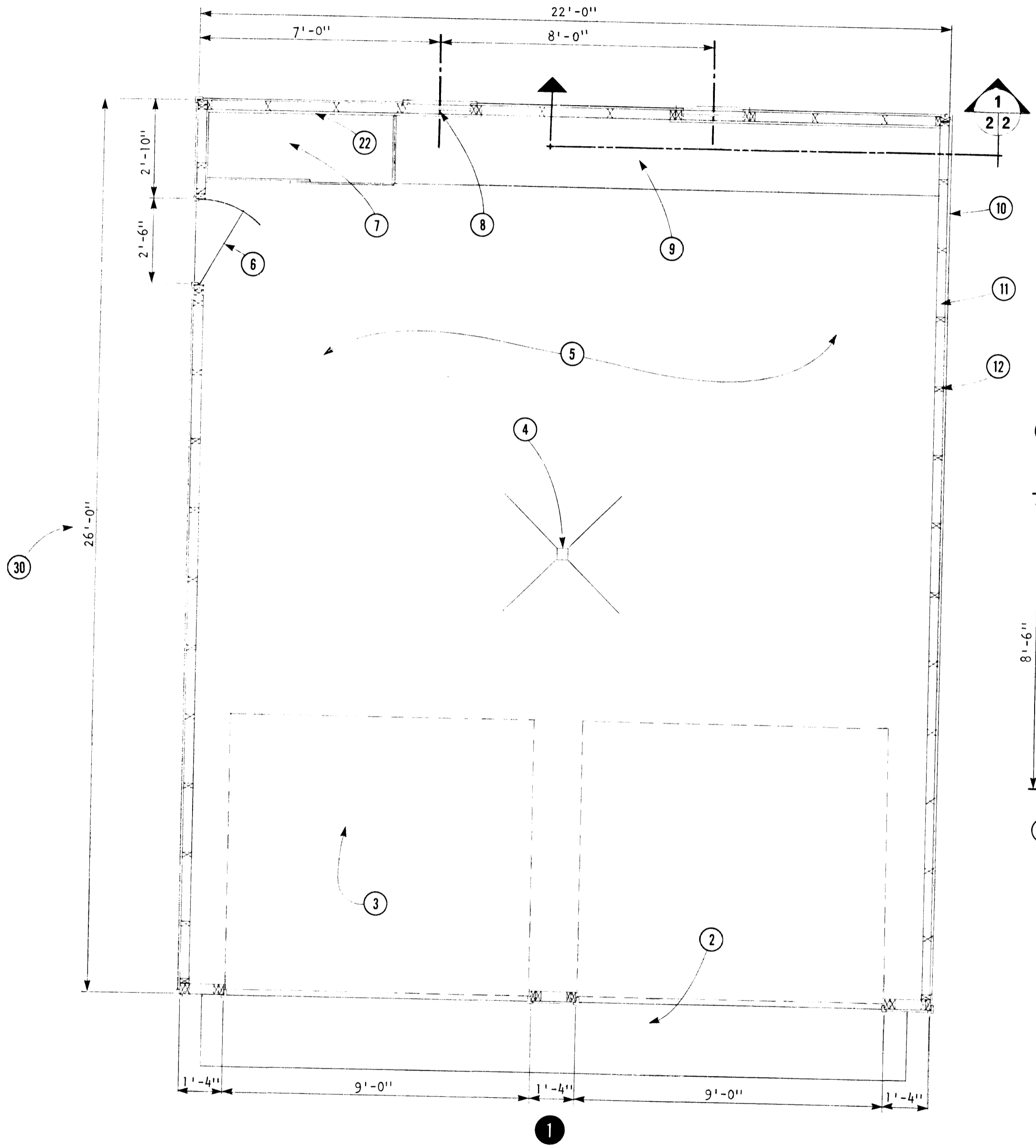


1. include leaflet 8343 for further information
2. attach roof truss plan to suit local design loads - 22'-0" span.



WARNING
 This plan may require structural and other changes to meet local site conditions, climatic loads, user requirements and applicable building regulations (such as the Canadian Farm Building Code). Before construction, the user of this plan is responsible to ensure that all required changes are made.

NO.	REV.	DESCRIPTION	DATE	APPROVED
TWO CAR GARAGE				
DESIGNED BY	DATE	MARCH 72	PLAN	
DRAWN BY	NO.	8343		
LISTED	SCALE	N/A	SHEET 1 OF 2	
REVISED	BY			



1. floor plan
2. concrete ramp 1½" below floor ⑤
3. 9'-0" x 8'-0" overhead door
4. 4" floor drain (optional)
5. concrete floor, slope to drain
6. 2'-6" x 6'-6" door
7. 5'-6" x 2'-0" storage closet with 2 - 3'-0" sliding doors
8. 22/20 window located 4'-0" from finished floor
9. 2' work bench 2'-6" from finished floor (optional), not shown in ②
10. 8" bevelled siding (optional)
11. 2-2" x 4" sills, pressure treated.
12. 2" x 4" x 8'-0" studs placed 24" o.c.
13. 2 - 2" x 4" header
14. 2 - 2" x 4" top plate
15. top of plate
16. 22'-0" span truss @ 2'-0" o.c. to suit local conditions
17. 3/8" sheathing grade douglas fir plywood
18. 210# asphalt shingles
19. 1" x 6" fascia board
20. ½" plywood soffit
21. quarter round moulding
22. 1" x 4" corner brace
23. 3/8" Ø x 12" anchor bolt 6'-0" o.c.
24. grade
25. ½" Ø re-bars top & bottom, continuous
26. 4" concrete slab
27. 6" compact gravel fill
28. 6" x 6" - 6/6 wire mesh
29. finished floor
30. suggested size if a work bench or storage closet is installed. Building may be lengthened or shortened, minimum length 24'-0"
31. standard framing anchor at each truss
32. 3'-0" wide x 4" deep coarse gravel perimeter splashpad, slope away from bldg.

SYM	REVISIONS	CHECKED	DATE	APPROVED

CANADA FARM BUILDING PLAN SERVICE

PLAN AND SECTION		
DESIGNED	DATE MARCH 73	PLAN 8343
DRAWN B.W.L.	REVISED	
TRACED	SCALE 3/8" = 1'-0"	SHEET 2 OF 2
CHECKED H.A.J.		

A Detail No.
B Sheet No. On Which Detail Originates
C Sheet No. On Which Detail is Shown