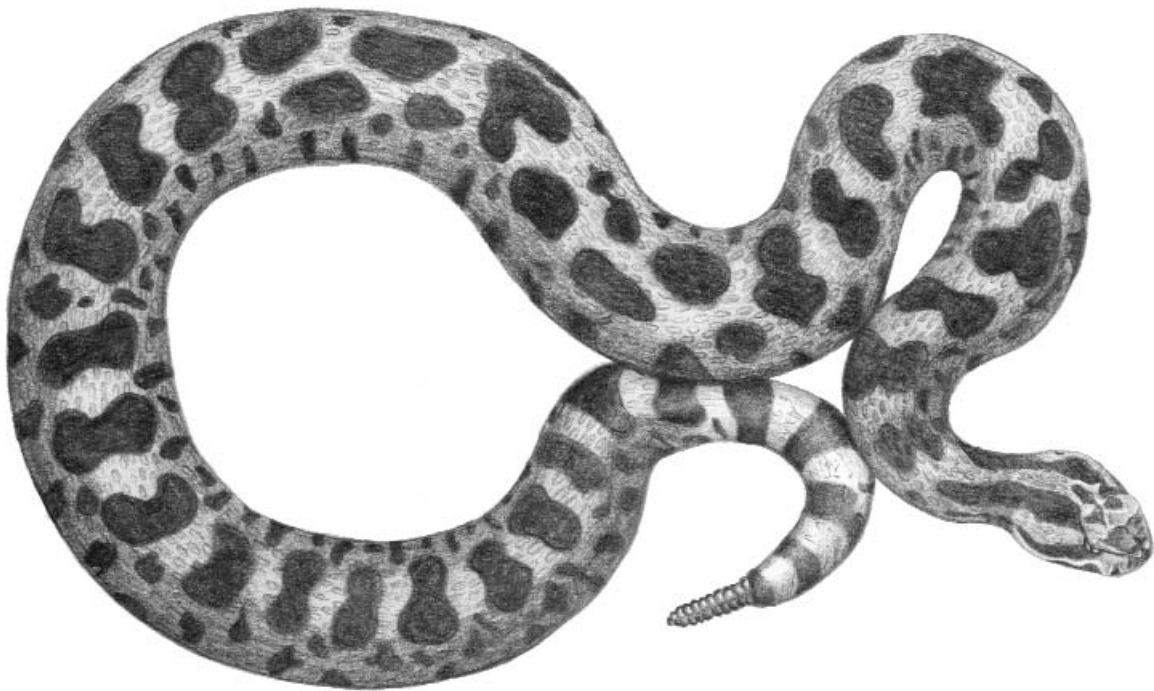


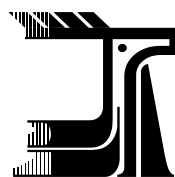
CANADIAN SPECIES AT RISK

NOVEMBER 2002



Aussi disponible en français

COSEWIC
COMMITTEE ON THE STATUS OF
ENDANGERED WILDLIFE
IN CANADA



COSEPAC
COMITÉ SUR LA SITUATION
DES ESPÈCES EN PÉRIL
AU CANADA

For additional copies contact:

COSEWIC Secretariat
c/o Canadian Wildlife Service
Environment Canada
Ottawa, ON
K1A 0H3

Tel.: (819) 997-4991 / (819) 953-3215

Fax: (819) 994-3684

E-mail: COSEWIC/COSEPAC@ec.gc.ca

Web site: <http://www.cosewic.gc.ca>

Courier address:
4th Floor,
Place Vincent Massey,
351 St. Joseph Blvd.,
Hull, QC.

Cover Illustration: Line drawing of the Massasauga Rattlesnake, by Sarah Ingwersen, Aurora, Ontario.

This list can be cited as follows: COSEWIC, 2002. Canadian Species at Risk, November 2002.
Committee on the Status of Endangered Wildlife in Canada. 37 pp.

TABLE OF CONTENTS

ABOUT COSEWIC.....	1
COSEWIC Mandate.....	1
COSEWIC Membership.....	1
Definitions.....	1
SUMMARY TABLES.....	2
COSEWIC Species designated in the five "risk" categories and in the NOT AT RISK and DATA DEFICIENT categories.....	2
Results of November 2002 COSEWIC meeting.....	3
COSEWIC LISTS.....	4
Explanation of symbols.....	4
Geographical occurrence abbreviations.....	4
List 1. Species examined and designated in the five "risk" categories.....	5
List 2. Species examined and designated in the NOT AT RISK category.....	18
List 3. Species examined and designated in the DATA DEFICIENT category.....	23
RECORD OF STATUS RE-EXAMINATIONS.....	24
LIST OF NAME CHANGES.....	36

ABOUT COSEWIC

COSEWIC MANDATE

The Committee on the Status of Endangered Wildlife in Canada (COSEWIC) determines the national status of wild species, subspecies, varieties, and nationally significant populations that are considered to be at risk in Canada. Designations are made on all native species for the following taxonomic groups: mammals, birds, reptiles, amphibians, fish, lepidopterans, molluscs, vascular plants, mosses, and lichens.

COSEWIC MEMBERSHIP

COSEWIC comprises members from each provincial and territorial government wildlife agency, four federal agencies (Canadian Wildlife Service, Parks Canada Agency, Department of Fisheries and Oceans, and the Federal Biosystematics Partnership, chaired by the Canadian Museum of Nature), three nonjurisdictional members and the co-chairs of the species specialist and the Aboriginal Traditional Knowledge subcommittees. The Committee meets to consider status reports on candidate species.

DEFINITIONS

Species	Any indigenous species, subspecies, variety, or geographically defined population of wild fauna and flora.
Extinct (X)	A species that no longer exists.
Extirpated (XT)	A species no longer existing in the wild in Canada, but occurring elsewhere.
Endangered (E)	A species facing imminent extirpation or extinction.
Threatened (T)	A species likely to become endangered if limiting factors are not reversed.
Special Concern (SC)*	A species of special concern because of characteristics that make it particularly sensitive to human activities or natural events.
Not at Risk (NAR)**	A species that has been evaluated and found to be not at risk.
Data Deficient (DD)***	A species for which there is insufficient scientific information to support status designation.

* Formerly described as "Vulnerable" from 1990 to 1999, or "Rare" prior to 1990.

** Formerly described as "Not In Any Category", or "No Designation Required."

*** Formerly described as "Indeterminate" from 1994 to 1999 or "ISIBD" (insufficient scientific information on which to base a designation) prior to 1994.

SUMMARY TABLES

COSEWIC Species designated in the five "risk" categories and in the NOT AT RISK and DATA DEFICIENT categories

Table 1. Summary of list 1: COSEWIC list of species at risk. Results include the November 2002 meeting.

CATEGORY / STATUS	EXTINCT	EXTIRPATED	ENDANGERED	THREATENED	SPECIAL CONCERN	TOTALS
Mammals	2	4	19	15	23	63
Birds	3	2	21	8	22	56
Reptiles		4	5	11	10	30
Amphibians		1	5	5	8	19
Fishes	5	2	18	20	32	77
Lepidopterans		3	4	2	2	11
Molluscs	1	2	9	1	1	14
Vascular Plants		2	54	36	40	132
Mosses	1	1	4	1		7
Lichens			2		4	6
TOTALS	12	21	141	99	142	415

Table 2. Summary of list 2: COSEWIC list of species not at risk. Results include the November 2002 meeting.

CATEGORY / STATUS	NOT AT RISK
Mammals	46
Birds	35
Reptiles	4
Amphibians	12
Fishes	32
Lepidopterans	0
Molluscs	1
Vascular Plants	16
Mosses	0
Lichens	0
TOTALS	146

Table 3. Summary of list 3: COSEWIC list of data deficient species. Results include the November 2002 meeting.

CATEGORY / STATUS	DATA DEFICIENT
Mammals	8
Birds	2
Reptiles	2
Amphibians	0
Fishes	8
Lepidopterans	0
Molluscs	2
Vascular Plants	4
Mosses	0
Lichens	2
TOTALS	28

Results of November 2002 COSEWIC meeting

Table 4. November 2002 results by status and taxon.

CATEGORY / STATUS	EXTINCT	EXTIRPATED	ENDANGERED	THREATENED	SPECIAL CONCERN	NOT AT RISK	DATA DEFICIENT	TOTALS
Mammals			1		1			2
Birds					1			1
Reptiles				1				1
Amphibians					2			2
Fishes			6	1			1	8
Lepidopterans								0
Molluscs		1	2					3
Vascular Plants			4	4				8
Mosses	1	1	2					4
Lichens							2	2
TOTALS	1	2	15	6	4	0	3	31

Table 5. November 2002 results by status and type of change in status.

CATEGORY / STATUS CHANGE*	EXTINCT	EXTIRPATED	ENDANGERED	THREATENED	SPECIAL CONCERN	NOT AT RISK	DATA DEFICIENT	TOTALS
New	1	2	8	1	1		2	15
Uplisted (↑)			6	1				7
Downlisted (↓)								
No Change (<>)			1	4	3			8
Changed (↻)							1	1
De-listed (✓)								
TOTALS	1	2	15	6	4	0	3	31

* Explanation of terms on following page.

COSEWIC LISTS

The lists that follow are organized by status category and then by taxonomic group. An explanation of the symbols and abbreviations is provided below. For each species, the information provided includes the common name, scientific name, population name, and range of occurrence in Canada (by province/territory/ocean). The most recent date of examination by COSEWIC is shown, and symbols provide information on the outcome of status re-examinations (e.g., uplisting, downlisting) and the basis of re-examination for species evaluated against the new quantitative criteria. For birds, range of occurrence includes the Canadian breeding and wintering distribution.

The first COSEWIC "Endangered Species List" was issued in 1978. In 1990, it was decided that all species considered by COSEWIC should be listed even if the species were "not at risk" or "data deficient." Therefore, this document is divided into three separate lists. List 1 includes Species designated as Extinct, Extirpated, Endangered, Threatened or Special Concern. List 2 includes species examined and designated in the Not at Risk category. List 3 includes species examined and designated in the Data Deficient category because of insufficient scientific information. All three lists include the geographical occurrence and most recent date of examination.

EXPLANATION OF SYMBOLS

Re-assessments and new species

- ↑ Species placed in a higher risk category (uplisted) after re-examination on the date shown.
 - ↓ Species placed in a lower risk category (downlisted) after re-examination on the date shown.
 - <> Species stays in the same risk category (no change) after re-examination on the date shown.
 - ✓ Species moved to the Not at Risk category from a risk category (de-listed) on the date shown.
 - ⊗ Species moved to the Data Deficient Category from a risk category, or to a risk category from the Data Deficient Category (changed), on the date shown.
- (no arrow) New species examined on the date shown.

Evaluation with COSEWIC's new quantitative criteria

COSEWIC has recently begun using quantitative criteria to assess species' risk of extinction. These criteria were adapted from the criteria used by the World Conservation Union (IUCN) and have been used by COSEWIC since May 2002.

Δ or Δ⁺ Assessment based on a new status report or an update status report. A plus sign (+) indicates the report has an addendum.

▲ or ▲⁺ Species re-assessed using an existing status report. A plus sign (+) indicates the report has an addendum or that the report has been modified slightly.

Geographical occurrence abbreviations

AB Alberta	NS Nova Scotia	QC Québec
BC British Columbia	NT Northwest Territories	SK Saskatchewan
MB Manitoba	NU Nunavut	YT Yukon Territory
NB New Brunswick	ON Ontario	
NL Newfoundland and Labrador	PE Prince Edward Island	

List 1. Species designated in the five "risk" categories, with range of occurrence (by province/territory/ocean) and year of designation. For extinct and extirpated species, the historical range of occurrence and the approximate date of disappearance are shown.

EXTINCT CATEGORY (12)

Taxon/ Assessment Details	Common Name	Scientific Name	Population Name	Historical Range of Occurrence	Extinction Date	Assessment Date
Mammals (2)						
△ < >	Caribou <i>dawsoni</i> subspecies	<i>Rangifer tarandus dawsoni</i>		BC	1920s	May 2000
△ < >	Mink, Sea	<i>Mustela macrodon</i>		Atlantic coastal waters	1894	May 2000
Birds (3)						
△ < >	Auk, Great	<i>Pinguinus impennis</i>		QC NB NS NL	1844	May 2000
△ < >	Duck, Labrador	<i>Camptorhynchus labradorius</i>		QC NB NS NL	1875	May 2000
△ < >	Pigeon, Passenger	<i>Ectopistes migratorius</i>		SK MB ON QC NB NS PE	1914	May 2000
Reptiles (0)						
Amphibians (0)						
Fishes (5)						
△ < >	Cisco, Deepwater	<i>Coregonus johanna</i>		ON	1952	May 2000
△ < >	Dace, Banff Longnose	<i>Rhinichthys cataractae smithi</i>		AB	1986	May 2000
△ < >	Stickleback, Benthic Hadley Lake	<i>Gasterosteus</i> sp.		BC	1999	May 2000
△ < >	Stickleback, Limnetic Hadley Lake	<i>Gasterosteus</i> sp.		BC	1999	May 2000
△ < >	Walleye, Blue	<i>Stizostedion vitreum glaucum</i>		ON	1965	May 2000
Lepidopterans (0)						
Molluscs (1)						
△ < >	Limpet, Eelgrass	<i>Lottia alveus alveus</i>		QC NS NL	1929	May 2000
Plants (0)						
Mosses (1)						
△	Moss, Macoun's Shining	<i>Neomacounia nitida</i>		ON	not observed since 1864	Nov 2002
Lichens (0)						

EXTIRPATED CATEGORY (21)

Taxon/ Assessment Details	Common Name	Scientific Name	Population Name	Historical Range of Occurrence	Extirpation Date	Assessment Date
Mammals (4)						
▲ <>	Bear, Grizzly	<i>Ursus arctos</i>	Prairie population	AB SK MB	1880s	May 2002
▲ <>	Ferret, Black-footed	<i>Mustela nigripes</i>		AB SK MB	1974	May 2000
▲ <>	Walrus, Atlantic	<i>Odobenus rosmarus rosmarus</i>	Northwest Atlantic population	Atlantic Ocean	mid 19th century	May 2000
▲ <>	Whale, Grey	<i>Eschrichtius robustus</i>	Atlantic population	Atlantic Ocean	before end of 1800s	May 2000
Birds (2)						
▲ <>	Prairie-Chicken, Greater	<i>Tympanuchus cupido</i>		AB SK MB ON	last reported in 1987 in Saskatchewan	May 2000
▲ <>	Sage-grouse <i>phaeos</i> subspecies, Greater	<i>Centrocercus urophasianus phaios</i>		BC	not observed since 1960s	May 2000
Reptiles (4)						
▲ <>	Lizard, Pygmy Short-horned	<i>Phrynosoma douglassii douglassii</i>	British Columbia population	BC	last reported in 1898, near Osoyoos, BC	May 2000
▲	Rattlesnake, Timber	<i>Crotalus horridus</i>		ON	1941	May 2001
▲	Snake, Pacific Gopher	<i>Pituophis catenifer catenifer</i>		BC	not observed since 1957	May 2002
▲	Turtle, Pacific Pond	<i>Clemmys marmorata</i>		BC	not observed since 1959	May 2002
Amphibians (1)						
▲	Salamander, Tiger	<i>Ambystoma tigrinum</i>	Great Lakes population	ON	not observed since 1915	Nov 2001
Fishes (2)						
▲ <>	Chub, Gravel	<i>Erimystax x-punctatus</i>		ON	last reported in 1958, Thames River drainage	May 2000
▲ <>	Paddlefish	<i>Polyodon spathula</i>		ON	1917	May 2000
Lepidopterans (3)						
▲ <>	Blue, Karner	<i>Lycaeides melissa samuelis</i>		ON	1991	May 2000
▲ <>	Elfin, Frosted	<i>Callophrys [Incisalia] irus</i>		ON	1988	May 2000
▲ <>	Marble, Island	<i>Euchloe ausonides</i>		BC	before 1910	May 2000
Molluscs (2)						
▲	Snail, Puget Oregonian	<i>Cryptomastix devia</i>		BC	not observed since 1905	Nov 2002
▲ <>	Wedgemussel, Dwarf	<i>Alasmidonta heterodon</i>		NB	1968	May 2000
Plants (2)						
▲ <>	Spring Blue-eyed Mary	<i>Collinsia verna</i>		ON	not observed since 1954	May 2000
▲ <>	Tick-trefoil, Illinois	<i>Desmodium illinoense</i>		ON	not observed since 1888	May 2000
Mosses (1)						
▲	Moss, Incurved Grizzled	<i>Ptychomitrium incurvum</i>		ON	1828	Nov 2002
Lichens (0)						

ENDANGERED CATEGORY (141)

Taxon/ Assessment Details	Common Name	Scientific Name	Population Name	Range of Occurrence	Assessment Date
Mammals (19)					
Δ	Badger <i>jacksoni</i> subspecies, American	<i>Taxidea taxus jacksoni</i>		ON	May 2000
Δ	Badger <i>jeffersonii</i> subspecies, American	<i>Taxidea taxus jeffersonii</i>		BC	May 2000
	Caribou, Peary	<i>Rangifer tarandus pearyi</i>	Banks Island population	NT	Apr 1991
	Caribou, Peary	<i>Rangifer tarandus pearyi</i>	High Arctic population	NT NU	Apr 1991
Δ <>	Caribou, Woodland	<i>Rangifer tarandus caribou</i>	Atlantic-Gaspésie population	QC	May 2002
Δ <>	Fox, Swift	<i>Vulpes velox</i>		AB SK	May 2000
Δ+ <>	Marmot, Vancouver Island	<i>Marmota vancouverensis</i>		BC	May 2000
Δ <>	Marten, American	<i>Martes americana atrata</i>	Newfoundland population	NL	May 2000
	Whale, Beluga	<i>Delphinapterus leucas</i>	Southeast Baffin Island- Cumberland Sound	NU NL Arctic Ocean	Apr 1990
<>	Whale, Beluga	<i>Delphinapterus leucas</i>	St. Lawrence River population	QC	Apr 1997
	Whale, Beluga	<i>Delphinapterus leucas</i>	Ungava Bay population	NU QC Arctic Ocean Atlantic Ocean	Apr 1988
Δ	Whale, Blue	<i>Balaenoptera musculus</i>	Atlantic population	Atlantic Ocean	May 2002
Δ	Whale, Blue	<i>Balaenoptera musculus</i>	Pacific population	Pacific Ocean	May 2002
	Whale, Bowhead	<i>Balaena mysticetus</i>	Eastern Arctic population	NU Arctic Ocean	Apr 1980
	Whale, Bowhead	<i>Balaena mysticetus</i>	Western Arctic population	YT NT NU Arctic Ocean	Apr 1986
Δ+	Whale, Killer	<i>Orcinus orca</i>	Northeast Pacific southern resident population	Pacific Ocean	Nov 2001
Δ+ ↑	Whale, Northern Bottlenose	<i>Hyperoodon ampullatus</i>	Scotian Shelf population	Atlantic Ocean	Nov 2002
<>	Whale, Right	<i>Eubalaena glacialis</i>		Atlantic Ocean Pacific	Apr 1990
	Wolverine	<i>Gulo gulo</i>	Eastern population	QC NL	Apr 1989
Birds (21)					
	Bobwhite, Northern	<i>Colinus virginianus</i>		ON	Apr 1994
Δ ↑	Chat, Western Yellow- breasted	<i>Icteria virens auricollis</i>	British Columbia population	BC	Nov 2000
Δ <>	Crane, Whooping	<i>Grus americana</i>		NT AB	Nov 2000
Δ <>	Curlew, Eskimo	<i>Numenius borealis</i>		YT NT NU BC AB SK MB ON QC NB NS PE NL	May 2000
Δ <>	Flycatcher, Acadian	<i>Empidonax virescens</i>		ON	Nov 2000
Δ <>	Owl, Barn	<i>Tyto alba</i>	Eastern population	ON QC	May 2000
Δ <>	Owl, Burrowing	<i>Athene cunicularia</i>		BC AB SK MB	May 2000
Δ <>	Owl, Northern Spotted	<i>Strix occidentalis caurina</i>		BC	May 2000
Δ	Plover <i>circumcinctus</i> subspecies, Piping	<i>Charadrius melodus circumcinctus</i>		AB SK MB ON	May 2001
Δ	Plover <i>melodus</i> subspecies, Piping	<i>Charadrius melodus melodus</i>		QC NB NS PE NL	May 2001
Δ <>	Plover, Mountain	<i>Charadrius montanus</i>		AB SK	Nov 2000
Δ <>	Rail, King	<i>Rallus elegans</i>		ON	Nov 2000
Δ <>	Sage-grouse <i>urophasianus</i> subspecies, Greater	<i>Centrocercus urophasianus urophasianus</i>		AB SK	May 2000

ENDANGERED CATEGORY (141)

Taxon/ Assessment Details	Common Name	Scientific Name	Population Name	Range of Occurrence	Assessment Date
Birds (21) (continued)					
Δ	Screech-owl <i>macfarlanei</i> subspecies, Western	<i>Otus kennicottii</i> <i>macfarlanei</i>		BC	May 2002
Δ < >	Shrike, Eastern Loggerhead	<i>Lanius ludovicianus migrans</i>		MB ON QC	Nov 2000
Δ < >	Sparrow, Henslow's	<i>Ammodramus henslowii</i>		ON	Nov 2000
▲ < >	Tern, Roseate	<i>Sterna dougallii</i>		QC NB NS	Oct 1999
Δ < >	Thrasher, Sage	<i>Oreoscoptes montanus</i>		BC AB SK	Nov 2000
▲ < >	Warbler, Kirtland's	<i>Dendroica kirtlandii</i>		ON	May 2000
▲ < >	Warbler, Prothonotary	<i>Protonotaria citrea</i>		ON	May 2000
Δ ↑	Woodpecker, White-headed	<i>Picoides albolarvatus</i>		BC	Nov 2000
Reptiles (5)					
Δ < >	Racer, Blue	<i>Coluber constrictor foxii</i>		ON	May 2002
	Snake, Lake Erie Water	<i>Nerodia sipedon insularum</i>		ON	Apr 1991
Δ	Snake, Night	<i>Hypsiglena torquata</i>		BC	May 2001
▲ < >	Snake, Sharp-tailed	<i>Contia tenuis</i>		BC	Oct 1999
Δ < >	Turtle, Leatherback	<i>Dermochelys coriacea</i>		Pacific Ocean Atlantic Ocean	May 2001
Amphibians (5)					
Δ < >	Frog, Northern Cricket	<i>Acris crepitans</i>		ON	May 2001
▲ < >	Frog, Northern Leopard	<i>Rana pipiens</i>	Southern Mountain population	BC	May 2000
Δ < >	Frog, Oregon Spotted	<i>Rana pretiosa</i>		BC	May 2000
Δ	Frog, Rocky Mountain Tailed	<i>Ascaphus montanus</i>		BC	May 2000
Δ	Salamander, Tiger	<i>Ambystoma tigrinum</i>	Southern Mountain population	BC	Nov 2001
Fishes (18)					
▲ < >	Dace, Nooksack	<i>Rhinichthys</i> sp.		BC	May 2000
Δ ↑	Dace, Speckled	<i>Rhinichthys osculus</i>		BC	Nov 2002
▲ ↑	Lamprey, Morrison Creek	<i>Lampetra richardsoni</i>		BC	May 2000
▲ ⁺ ↑	Madtom, Northern	<i>Noturus stigmosus</i>		ON	Nov 2002
Δ	Salmon, Atlantic	<i>Salmo salar</i>	Inner Bay of Fundy populations	NB NS (rarely NL) Atlantic Ocean	May 2001
Δ	Salmon, Coho	<i>Oncorhynchus kisutch</i>	Interior Fraser population	BC	May 2002
Δ	Salmon, Sockeye	<i>Oncorhynchus nerka</i>	Cultus Lake population	BC	Oct 2002
Δ	Salmon, Sockeye	<i>Oncorhynchus nerka</i>	Sakinaw Lake population	BC	Oct 2002
Δ ↑	Shiner, Pugnose	<i>Notropis anogenus</i>		ON	Nov 2002
Δ	Stickleback, Benthic Enos Lake	<i>Gasterosteus</i> sp.		BC	Nov 2002
▲ ↑	Stickleback, Benthic Paxton Lake	<i>Gasterosteus</i> sp.		BC	May 2000
▲ ↑	Stickleback, Benthic Vananda Creek	<i>Gasterosteus</i> sp.		BC	May 2000
Δ	Stickleback, Limnetic Enos Lake	<i>Gasterosteus</i> sp.		BC	Nov 2002
▲ ↑	Stickleback, Limnetic Paxton Lake	<i>Gasterosteus</i> sp.		BC	May 2000
▲ ↑	Stickleback, Limnetic Vananda Creek	<i>Gasterosteus</i> sp.		BC	May 2000
Δ < >	Sucker, Salish	<i>Catostomus</i> sp.		BC	Nov 2002
Δ < >	Trout, Aurora	<i>Salvelinus fontinalis</i>		ON	May 2000
Δ < >	Whitefish, Atlantic	<i>Coregonus huntsmani</i>		NS	Nov 2000

ENDANGERED CATEGORY (141) *continued*

Taxon/ Assessment Details	Common Name	Scientific Name	Population Name	Range of Occurrence	Assessment Date
Lepidopterans (4)					
△	Blue, Island	<i>Plebejus saepiolus insulanus</i>		BC	Nov 2000
△	Checkerspot, Taylor's	<i>Euphydryas editha taylori</i>		BC	Nov 2000
△	Moth, Yucca	<i>Tegeticula yuccasella</i>		AB	May 2002
△ <>	Ringlet, Maritime	<i>Coenonympha tullia nipisiquit</i>		QC NB	May 2000
Molluscs (9)					
△ <>	Bean, Rayed	<i>Villosa fabalis</i>		ON	May 2000
△	Forestsnail, Oregon	<i>Allogona townsendiana</i>		BC	Nov 2002
△ <>	Lampmussel, Wavy-rayed	<i>Lampsilis fasciola</i>		ON	Oct 1999
△	Mussel, Mudpuppy	<i>Simpsonaias ambigua</i>		ON	May 2001
△ <>	Physa, Hotwater	<i>Physella wrighti</i>		BC	May 2000
△ ⁺ <>	Riffleshell, Northern	<i>Epioblasma torulosa rangiana</i>		ON	May 2000
△ ↑	Snail, Banff Springs	<i>Physella johnsoni</i>		AB	May 2000
△	Snail, Lake Winnipeg Physa	<i>Physa</i> sp.		MB	Nov 2002
△	Snuffbox	<i>Epioblasma triquetra</i>		ON	May 2001
Plants (54)					
△ ⁺ <>	Agalinis, Gattinger's	<i>Agalinis gattingeri</i>		ON	May 2001
△ <>	Agalinis, Skinner's	<i>Agalinis skinneriana</i>		ON	May 2000
△ <>	Ammannia, Scarlet	<i>Ammannia robusta</i>		BC ON	May 2001
△ <>	Avens, Eastern Mountain	<i>Geum peckii</i>		NS	May 2000
△ <>	Balsamroot, Deltoid	<i>Balsamorhiza deltoidea</i>		BC	May 2000
△ <>	Bluehearts	<i>Buchnera americana</i>		ON	May 2000
△ ⁺ <>	Braya, Long's	<i>Braya longii</i>		NL	May 2000
△	Bugbane, Tall	<i>Cimicifuga elata</i>		BC	May 2001
△ ↑	Bulrush, Bashful	<i>Trichophorum planifolium</i>		ON	May 2000
△ <>	Bush-clover, Slender	<i>Lespedeza virginica</i>		ON	May 2000
△ <>	Buttercup, Water-plantain	<i>Ranunculus alismaefolius</i> var. <i>alismaefolius</i>		BC	May 2000
△ <>	Cactus, Eastern Prickly Pear	<i>Opuntia humifusa</i>		ON	May 2000
△ <>	Coreopsis, Pink	<i>Coreopsis rosea</i>		NS	May 2000
△ <>	Cryptanthe, Tiny	<i>Cryptantha minima</i>		AB SK	May 2000
△ <>	Fern, Southern Maidenhair	<i>Adiantum capillus-veneris</i>		BC	May 2000
△ <>	Gentian, White Prairie	<i>Gentiana alba</i>		ON	May 2001
△ <>	Ginseng, American	<i>Panax quinquefolius</i>		ON QC	May 2000
△ ⁺ ↑	Goat's-rue, Virginia	<i>Tephrosia virginiana</i>		ON	May 2000
△ <>	Goldenrod, Showy	<i>Solidago speciosa</i> var. <i>rigidiuscula</i>		ON	May 2000
△	Grass, Forked Three-awned	<i>Aristida basiramea</i>		ON QC	Nov 2002
△ <>	Lady's-slipper, Small White	<i>Cypripedium candidum</i>		MB ON	May 2000
△ ↑	Lipocarpha, Small-flowered	<i>Lipocarpha micrantha</i>		BC ON	Nov 2002
△ <>	Lotus, Seaside Birds-foot	<i>Lotus formosissimus</i>		BC	May 2000
△ <>	Lousewort, Furbish's	<i>Pedicularis furbishiae</i>		NB	May 2000

ENDANGERED CATEGORY (141) *continued*

Taxon/ Assessment Details	Common Name	Scientific Name	Population Name	Range of Occurrence	Assessment Date
Plants (54) <i>continued</i>					
▲ <>	Lupine, Prairie	<i>Lupinus lepidus</i> var. <i>lepidus</i>		BC	May 2000
Δ	Lupine, Streambank	<i>Lupinus rivularis</i>		BC	Nov 2002
▲ <>	Milkwort, Pink	<i>Polygala incarnata</i>		ON	May 2000
▲ <>	Mountain-mint, Hoary	<i>Pycnanthemum incanum</i>		ON	May 2000
▲ <>	Mulberry, Red	<i>Morus rubra</i>		ON	May 2000
Δ <>	Orchid, Western Prairie Fringed	<i>Platanthera praeclara</i>		MB	May 2000
▲ <>	Owl-clover, Bearded	<i>Triphysaria versicolor</i> ssp. <i>versicolor</i>		BC	May 2000
▲+ ↑	Paintbrush, Golden	<i>Castilleja levisecta</i>		BC	May 2000
▲ <>	Plantain, Heart-leaved	<i>Plantago cordata</i>		ON	May 2000
▲ <>	Pogonia, Large Whorled	<i>Isotria verticillata</i>		ON	May 2000
▲ <>	Pogonia, Nodding	<i>Triphora trianthophora</i>		ON	May 2000
▲ <>	Pogonia, Small Whorled	<i>Isotria medeoloides</i>		ON	May 2000
Δ <>	Quillwort, Engelmann's	<i>Isoetes engelmannii</i>		ON	May 2001
Δ ↑	Sand-verbena, Small-flowered	<i>Tripterocalyx micranthus</i>		AB SK	Nov 2002
Δ	Sanicle, Bear's-foot	<i>Sanicula arctopoides</i>		BC	May 2001
▲ ↑	Sedge, False Hop	<i>Carex lupuliformis</i>		ON QC	May 2000
▲ <>	Sedge, Juniper	<i>Carex juniperorum</i>		ON	May 2000
Δ	Spike-rush, Horsetail	<i>Eleocharis equisetoides</i>		ON	Nov 2000
Δ <>	Sundew, Thread-leaved	<i>Drosera filiformis</i>		NS	May 2001
▲ <>	Thistle, Pitcher's	<i>Cirsium pitcheri</i>		ON	May 2000
▲ <>	Toothcup	<i>Rotala ramosior</i>		BC ON	May 2000
▲ <>	Tree, Cucumber	<i>Magnolia acuminata</i>		ON	May 2000
▲ <>	Trillium, Drooping	<i>Trillium flexipes</i>		ON	May 2000
▲+ <>	Twayblade, Purple	<i>Liparis liliifolia</i>		ON	May 2001
Δ ↑	Violet, Bird's-foot	<i>Viola pedata</i>		ON	May 2002
Δ	Willow, Barrens	<i>Salix jejuna</i>		NL	May 2001
▲ <>	Wintergreen, Spotted	<i>Chimaphila maculata</i>		ON QC	May 2000
▲+ <>	Wood-poppy	<i>Stylophorum diphyllum</i>		ON	May 2000
▲ ↑	Woodsia, Blunt-lobed	<i>Woodsia obtusa</i>		ON QC	May 2000
Δ	Woolly-heads, Tall	<i>Psilocarphus elatior</i>	Pacific population	BC	May 2001
Mosses (4)					
Δ	Moss, Margined Streamside	<i>Scouleria marginata</i>		BC	Nov 2002
Δ	Moss, Poor Pocket	<i>Fissidens pauperculus</i>		BC	Nov 2001
▲+ ↑	Moss, Rigid Apple	<i>Bartramia stricta</i>		BC	May 2000
Δ	Moss, Silver Hair	<i>Fabronia pusilla</i>		BC	Nov 2002
Lichens (2)					
Δ	Lichen, Boreal Felt	<i>Erioderma pedicellatum</i>	Atlantic population	NB NS	May 2002
▲ <>	Seaside Centipede	<i>Heterodermia sitchensis</i>		BC	May 2000

THREATENED CATEGORY (99) *continued*

Taxon/ Assessment Details	Common Name	Scientific Name	Population Name	Range of Occurrence	Assessment Date
Mammals (15)					
△ ↑	Bat, Pallid	<i>Antrozous pallidus</i>		BC	May 2000
△ < >	Bison, Wood	<i>Bison bison athabasca</i>		YT NT BC AB	May 2000
	Caribou, Peary	<i>Rangifer tarandus pearyi</i>	Low Arctic population	NT NU	Apr 1991
△ < >	Caribou, Woodland	<i>Rangifer tarandus caribou</i>	Boreal population	NT BC AB SK MB ON QC NL	May 2002
△ < >	Caribou, Woodland	<i>Rangifer tarandus caribou</i>	Southern Mountain population	BC AB	May 2002
△ ↑	Ermine <i>haidarum</i> subspecies	<i>Mustela erminea haidarum</i>		BC	May 2001
△ ↑	Fox, Grey	<i>Urocyon cinereoargenteus</i>		MB ON	May 2002
	Mole, Townsend's	<i>Scapanus townsendii</i>		BC	Apr 1996
△ < >	Otter, Sea	<i>Enhydra lutris</i>		Pacific coastal waters	May 2000
< >	Porpoise, Harbour	<i>Phocoena phocoena</i>	Northwest Atlantic population	Atlantic Ocean	Apr 1991
△+ < >	Shrew, Pacific Water	<i>Sorex bendirii</i>		BC	May 2000
	Whale, Beluga	<i>Delphinapterus leucas</i>	Eastern Hudson Bay	QC Arctic Ocean	Apr 1988
	Whale, Humpback	<i>Megaptera novaeangliae</i>	North Pacific population	Pacific Ocean	Apr 1985
△+	Whale, Killer	<i>Orcinus orca</i>	Northeast Pacific northern resident population	Pacific Ocean	Nov 2001
△+ ↑	Whale, Killer	<i>Orcinus orca</i>	Northeast Pacific transient population	Pacific Ocean	Nov 2001
Birds (8)					
△ ↑	Bittern, Least	<i>Ixobrychus exilis</i>		MB ON QC NB	Nov 2001
△ < >	Falcon <i>anatum</i> subspecies, Peregrine	<i>Falco peregrinus anatum</i>		YT NT NU BC AB SK MB ON QC NB NS NL	May 2000
△ ↑	Goshawk <i>laingi</i> subspecies, Northern	<i>Accipiter gentilis laingi</i>		BC	Nov 2000
△ ↑	Gull, Ross's	<i>Rhodostethia rosea</i>		NT NU MB	Nov 2001
△ < >	Murrelet, Marbled	<i>Brachyramphus marmoratus</i>		BC	Nov 2000
△ < >	Pipit, Sprague's	<i>Anthus spragueii</i>		AB SK MB	May 2000
	Shrike, Prairie Loggerhead	<i>Lanius ludovicianus excubitorides</i>		AB SK MB	Apr 1986
△ < >	Warbler, Hooded	<i>Wilsonia citrina</i>		ON	Nov 2000
Reptiles (11)					
△ ↑	Gartersnake, Butler's	<i>Thamnophis butleri</i>		ON	Nov 2001
△ < >	Massasauga	<i>Sistrurus catenatus</i>		ON	Nov 2002
△ < >	Ratsnake, Black	<i>Elaphe obsoleta obsoleta</i>		ON	May 2000
△	Ribbonsnake, Northern	<i>Thamnophis sauritus</i>	Atlantic population	NS	May 2002
△ < >	Snake, Eastern Fox	<i>Elaphe vulpina gloydi</i>		ON	May 2000
△ ↑	Snake, Eastern Hog-nosed	<i>Heterodon platirhinos</i>		ON	Nov 2001
△	Snake, Great Basin Gopher	<i>Pituophis catenifer deserticola</i>		BC	May 2002
△ < >	Snake, Queen	<i>Regina septemvittata</i>		ON	May 2000
△	Stinkpot	<i>Sternotherus odoratus</i>		ON QC	May 2002
	Turtle, Blanding's	<i>Emydoidea blandingii</i>	Nova Scotia population	NS	Apr 1993
△ < >	Turtle, Eastern Spiny Softshell	<i>Apalone spinifera</i>		ON QC	May 2002
Amphibians (5)					
△+ ↑	Salamander, Allegheny Mountain Dusky	<i>Desmognathus ochrophaeus</i>		QC	Nov 2001

THREATENED CATEGORY (99) *continued*

Taxon/ Assessment Details	Common Name	Scientific Name	Population Name	Range of Occurrence	Assessment Date
Amphibians (5) <i>continued</i>					
Δ	Salamander, Jefferson	<i>Ambystoma jeffersonianum</i>		ON	Nov 2000
Δ ↑	Salamander, Pacific Giant	<i>Dicamptodon tenebrosus</i>		BC	Nov 2000
▲ ↑	Spadefoot, Great Basin	<i>Spea intermontana</i>		BC	Nov 2001
▲+ < >	Toad, Fowler's	<i>Bufo fowleri</i>		ON	Nov 2000
Fishes (20)					
Δ	Bocaccio	<i>Sebastes paucispinis</i>		Pacific Ocean	Nov 2002
▲+ ↑	Chubsucker, Lake	<i>Erimyzon sucetta</i>		ON	Nov 2001
	Cisco, Blackfin	<i>Coregonus nigripinnis</i>		ON	Apr 1988
	Cisco, Shortjaw	<i>Coregonus zenithicus</i>		NT AB SK MB ON	Apr 1987
	Cisco, Shortnose	<i>Coregonus reighardi</i>		ON	Apr 1987
Δ < >	Darter, Channel	<i>Percina copelandi</i>		ON QC	May 2002
▲+ < >	Darter, Eastern Sand	<i>Ammocrypta pellucida</i>		ON QC	Nov 2000
▲ ↑	Gar, Spotted	<i>Lepisosteus oculatus</i>		ON	Nov 2000
▲ ↑	Lamprey, Cowichan Lake	<i>Lampetra macrostoma</i>		BC	Nov 2000
▲+ ↑	Minnow, Western Silvery	<i>Hybognathus argyritis</i>		AB	Nov 2001
	Redhorse, Black	<i>Moxostoma duquesnei</i>		ON	Apr 1988
	Redhorse, Copper	<i>Moxostoma hubbsi</i>		QC	Apr 1987
▲ ↑	Sculpin, Cultus Pygmy	<i>Cottus</i> sp.		BC	Nov 2000
	Sculpin, Deepwater	<i>Myoxocephalus thompsoni</i>	Great Lakes populations	ON	Apr 1987
Δ < >	Sculpin, Shorthead	<i>Cottus confusus</i>		BC	May 2001
▲ ↑	Shiner, Rosyface	<i>Notropis rubellus</i>	Manitoba population	MB	Nov 2001
▲ < >	Smelt, Lake Utopia Dwarf	<i>Osmerus</i> sp.		NB	May 2000
	Whitefish, Lake	<i>Coregonus clupeaformis</i>	Lake Simcoe population	ON	Apr 1987
Δ	Wolfish, Northern	<i>Anarhichas denticulatus</i>		Arctic Ocean Atlantic Ocean	May 2001
Δ	Wolfish, Spotted	<i>Anarhichas minor</i>		Arctic Ocean Atlantic Ocean	May 2001
Lepidopterans (2)					
Δ	Hairstreak, Behr's (Columbia)	<i>Satyrium behrii columbiana</i>		BC	Nov 2000
Δ	Skipper, Dun	<i>Euphyes vestris</i>	Western population	BC	Nov 2000
Molluscs (1)					
▲ < >	Abalone, Northern	<i>Haliotis kamtschatkana</i>		Pacific coastal waters	May 2000
Plants (36)					
Δ < >	Aster, Anticosti	<i>Symphyotrichum anticostense</i>		QC NB	May 2000
▲ ↑	Aster, Crooked-stem	<i>Symphyotrichum prenanthoides</i>		ON	May 2002
Δ ↑	Aster, Western Silvery	<i>Symphyotrichum sericeum</i>		MB ON	May 2000
Δ < >	Aster, White Wood	<i>Eurybia divaricata</i>		ON QC	Nov 2002

THREATENED CATEGORY (99) *continued*

Taxon/ Assessment Details	Common Name	Scientific Name	Population Name	Range of Occurrence	Assessment Date
Plants (36) <i>continued</i>					
▲ ⁺ < >	Aster, White-top	<i>Sericocarpus rigidus</i>		BC	May 2000
▲ ↑	Blazing Star, Dense	<i>Liatris spicata</i>		ON	May 2001
▲ < >	Blue-flag, Western	<i>Iris missouriensis</i>		AB	May 2000
▲ ⁺ < >	Braya, Fernald's	<i>Braya fernaldii</i>		NL	May 2000
▲ ↑	Buffalograss	<i>Buchloë dactyloides</i>		SK MB	Nov 2001
	Chestnut, American	<i>Castanea dentata</i>		ON	Apr 1987
▲ < >	Coffee-tree, Kentucky	<i>Gymnocladus dioicus</i>		ON	Nov 2000
▲ < >	Colicroot	<i>Aletris farinosa</i>		ON	Nov 2000
▲	Corydalis, Scouler's	<i>Corydalis scouleri</i>		BC	May 2001
▲	Daisy, Lakeside	<i>Hymenoxys herbacea</i>		ON	May 2002
▲ < >	Deerberry	<i>Vaccinium stamineum</i>		ON	Nov 2000
▲ < >	Gentian, Plymouth	<i>Sabatia kennedyana</i>		NS	May 2000
▲ < >	Golden Crest	<i>Lophiola aurea</i>		NS	May 2000
▲ < >	Goldenseal	<i>Hydrastis canadensis</i>		ON	May 2000
▲ ⁺ < >	Greenbrier, Round-leaved	<i>Smilax rotundifolia</i>	Great Lakes Plains population	ON	May 2001
▲ ↑	Hoptree, Common	<i>Ptelea trifoliata</i>		ON	Nov 2002
▲ ↑	Hyacinth, Wild	<i>Camassia scilloides</i>		ON	May 2002
▲ < >	Jacob's-ladder, Van Brunt's	<i>Polemonium vanbruntiae</i>		QC	Nov 2002
▲	Lily, Lyall's Mariposa	<i>Calochortus lyallii</i>		BC	May 2001
▲ < >	Mosquito-fern, Mexican	<i>Azolla mexicana</i>		BC	May 2000
▲ ⁺ ↓	Mouse-ear-cress, Slender	<i>Halimolobos virgata</i>		AB SK	May 2000
▲ ↑	Orchid, Phantom	<i>Cephalanthera austiniiae</i>		BC	May 2000
▲ ⁺ < >	Prairie-clover, Hairy	<i>Dalea villosa</i> var. <i>villosa</i>		SK MB	May 2000
▲ < >	Redroot	<i>Lachnanthes caroliana</i>		NS	May 2000
▲ ↑	Rose, Climbing Prairie	<i>Rosa setigera</i>		ON	May 2002
▲	Sanicle, Purple	<i>Sanicula bipinnatifida</i>		BC	May 2001
▲ ↑	Soapweed	<i>Yucca glauca</i>		AB	May 2000
▲ < >	Spiderwort, Western	<i>Tradescantia occidentalis</i>		AB SK MB	Nov 2002
▲	Spike-rush, Tubercled	<i>Eleocharis tuberculosa</i>		NS	May 2000
▲ < >	Violet, Yellow Montane	<i>Viola praemorsa</i> ssp. <i>praemorsa</i>		BC	May 2000
▲ < >	Water-pennywort	<i>Hydrocotyle umbellata</i>		NS	May 2000
▲ < >	Water-willow, American	<i>Justicia americana</i>		ON QC	May 2000
Mosses (1)					
▲	Moss, Haller's Apple	<i>Bartramia halleriana</i>		BC AB	Nov 2001

Lichens (0)

SPECIAL CONCERN CATEGORY (142)

Taxon/ Assessment Details	Common Name	Scientific Name	Population Name	Range of Occurrence	Assessment Date
Mammals (23)					
	Bat, Fringed	<i>Myotis thysanodes</i>		BC	Apr 1988
	Bat, Keen's Long-eared	<i>Myotis keenii</i>		BC	Apr 1988
	Bat, Spotted	<i>Euderma maculatum</i>		BC	Apr 1988
Δ <>	Bear, Grizzly	<i>Ursus arctos</i>	Northwestern population	YT NT NU BC AB	May 2002
Δ+ <>	Bear, Polar	<i>Ursus maritimus</i>		YT NT NU MB ON QC NL	Nov 2002
Δ <>	Beaver, Mountain	<i>Aplodontia rufa</i>		BC	Nov 2001
Δ ↑	Caribou, Woodland	<i>Rangifer tarandus caribou</i>	Northern Mountain population	YT NT BC	May 2002
	Cottontail <i>nuttallii</i> subspecies, Nuttall's	<i>Sylvilagus nuttallii nuttallii</i>		BC	Apr 1994
	Kangaroo Rat, Ord's	<i>Dipodomys ordii</i>		AB SK	Apr 1995
Δ <>	Mole, Eastern	<i>Scalopus aquaticus</i>		ON	Nov 2000
	Mouse <i>megalotis</i> subspecies, Western Harvest	<i>Reithrodontomys megalotis megalotis</i>		BC	Apr 1994
Δ <>	Prairie Dog, Black-tailed	<i>Cynomys ludovicianus</i>		SK	Nov 2000
	Seal Lac des Loups Marins subspecies, Harbour	<i>Phoca vitulina mellonae</i>		QC	Apr 1996
	Shrew, Gaspé	<i>Sorex gaspensis</i>		QC NB NS	Apr 1988
	Squirrel, Southern Flying	<i>Glaucomys volans</i>		ON QC NS	Apr 1988
Δ <>	Vole, Woodland	<i>Microtus pinetorum</i>		ON QC	Nov 2001
	Whale, Beluga	<i>Delphinapterus leucas</i>	Eastern High Arctic / Baffin Bay population	NU Arctic Ocean	Apr 1992
	Whale, Fin	<i>Balaenoptera physalus</i>		Atlantic Ocean Pacific Ocean	Apr 1987
	Whale, Humpback	<i>Megaptera novaeangliae</i>	Western North Atlantic population	Atlantic Ocean	Apr 1985
Δ+ <>	Whale, Killer	<i>Orcinus orca</i>	Northeast Pacific offshore population	Pacific Ocean	Nov 2001
	Whale, Sowerby's Beaked	<i>Mesoplodon bidens</i>		Atlantic Ocean	Apr 1989
Δ ☼	Wolf, Eastern	<i>Canis lupus lycaon</i>		ON QC	May 2001
	Wolverine	<i>Gulo gulo</i>	Western population	YT NT NU BC AB SK MB ON	Apr 1989
Birds (22)					
Δ <>	Chat, Eastern Yellow-breasted	<i>Icteria virens virens</i>		ON	Nov 2000
Δ <>	Curlew, Long-billed	<i>Numenius americanus</i>		BC AB SK	Nov 2002
Δ ↓	Duck, Harlequin	<i>Histrionicus histrionicus</i>	Eastern population	NU QC NB NS NL	May 2001
Δ <>	Falcon <i>pealei</i> subspecies, Peregrine	<i>Falco peregrinus pealei</i>		BC	Nov 2001
	↓ Falcon <i>tundrius</i> subspecies, Peregrine	<i>Falco peregrinus tundrius</i>		YT NT NU QC NL	Apr 1992
Δ	Goldeneye, Barrow's	<i>Bucephala islandica</i>	Eastern population	QC NB NS PE NL	Nov 2000
Δ <>	Gull, Ivory	<i>Pagophila eburnea</i>		YT NT NU NL	Nov 2001
	↓ Hawk, Ferruginous	<i>Buteo regalis</i>		AB SK MB	Apr 1995
<>	Hawk, Red-shouldered	<i>Buteo lineatus</i>		ON QC NB	Apr 1996
	Heron <i>fannini</i> subspecies, Great Blue	<i>Ardea herodias fannini</i>		BC	Apr 1997
	Murrelet, Ancient	<i>Synthliboramphus antiquus</i>		BC	Apr 1993
Δ <>	Owl, Barn	<i>Tyto alba</i>	Western population	BC	Nov 2001
Δ <>	Owl, Flammulated	<i>Otus flammeolus</i>		BC	Nov 2001
	Owl, Short-eared	<i>Asio flammeus</i>		YT NT NU BC AB SK MB ON QC NB NS PE NL	Apr 1994
Δ <>	Rail, Yellow	<i>Coturnicops noveboracensis</i>		NT BC AB SK MB ON QC NB	Nov 2001

SPECIAL CONCERN CATEGORY (142)

Taxon/ Assessment Details	Common Name	Scientific Name	Population Name	Range of Occurrence	Assessment Date
Birds (22) continued					
Δ	Screech-owl <i>kennicottii</i> subspecies, Western	<i>Otus kennicottii kennicottii</i>		BC	May 2002
Δ < >	Sparrow <i>princeps</i> subspecies Savannah	<i>Passerculus sandwichensis princeps</i>		NS	May 2000
	Thrush, Bicknell's	<i>Catharus bicknelli</i>		QC NB NS	Apr 1999
	Warbler, Cerulean	<i>Dendroica cerulea</i>		ON QC	Apr 1993
< >	Waterthrush, Louisiana	<i>Seiurus motacilla</i>		ON QC	Apr 1996
Δ < >	Woodpecker, Lewis's	<i>Melanerpes lewis</i>		BC	Nov 2001
	Woodpecker, Red-headed	<i>Melanerpes erythrocephalus</i>		SK MB ON QC	Apr 1996
Reptiles (10)					
	Lizard, Eastern Short-horned	<i>Phrynosoma douglassii brevirostre</i>		AB SK	Apr 1992
Δ	Milksnake, Eastern	<i>Lampropeltis triangulum</i>		ON QC	May 2002
	Racer, Eastern Yellow-bellied	<i>Coluber constrictor flaviventris</i>		SK	Apr 1991
Δ	Ribbonsnake, Northern	<i>Thamnophis sauritus</i>	Great Lakes population	ON	May 2002
	Skink, Five-lined	<i>Eumeces fasciatus</i>		ON	Apr 1998
	Skink, Northern Prairie	<i>Eumeces septentrionalis septentrionalis</i>		MB	Apr 1989
Δ	Skink, Western	<i>Eumeces skiltonianus</i>		BC	May 2002
Δ	Turtle, Northern Map	<i>Graptemys geographica</i>		ON QC	May 2002
	Turtle, Spotted	<i>Clemmys guttata</i>		ON QC	Apr 1991
	Turtle, Wood	<i>Clemmys insculpta</i>		ON QC NB NS	Apr 1996
Amphibians (8)					
Δ	Frog, Coast Tailed	<i>Ascaphus truei</i>		BC	May 2000
Δ < >	Frog, Northern Leopard	<i>Rana pipiens</i>	Western Boreal/Prairie populations	NT AB SK MB	Nov 2002
Δ < >	Frog, Northern Red-legged	<i>Rana aurora</i>		BC	May 2002
Δ ⁺ < >	Salamander, Coeur d'Alene	<i>Plethodon idahoensis</i>		BC	Nov 2001
	Salamander, Smallmouth	<i>Ambystoma texanum</i>		ON	Apr 1991
Δ < >	Salamander, Spring	<i>Gyrinophilus porphyriticus</i>		ON QC	May 2002
Δ < >	Toad, Great Plains	<i>Bufo cognatus</i>		AB SK MB	May 2002
Δ	Toad, Western	<i>Bufo boreas</i>		YT NT BC AB	Nov 2002
Fishes (32)					
	Buffalo, Bigmouth	<i>Ictiobus cyprinellus</i>		SK MB ON	Apr 1989
	Buffalo, Black	<i>Ictiobus niger</i>		ON	Apr 1989
Δ < >	Chub, Silver	<i>Macrhybopsis storeriana</i>		MB ON	May 2001
	Cisco, Spring	<i>Coregonus sp.</i>		QC	Apr 1992
	Cod, Atlantic	<i>Gadus morhua</i>		Atlantic Ocean	Apr 1998
	Dace, Redside	<i>Clinostomus elongatus</i>		ON	Apr 1987
	Dace, Umatilla	<i>Rhinichthys umatilla</i>		BC	Apr 1988
	Darter, Greenside	<i>Etheostoma blennioides</i>		ON	Apr 1990
	Killifish, Banded	<i>Fundulus diaphanus</i>	Newfoundland population	NL	Apr 1989
	Kiyi	<i>Coregonus kiyi</i>		ON	Apr 1988
	Lamprey, Chestnut	<i>Ichthyomyzon castaneus</i>		SK MB	Apr 1991
	Lamprey, Northern Brook	<i>Ichthyomyzon fossor</i>		MB ON QC	Apr 1991
Δ < >	Minnow, Pugnose	<i>Opsopoeodus emiliae</i>		ON	May 2000
	Prickleback, Pighead	<i>Acantholumpenus mackayi</i>		Arctic Ocean	Apr 1989
< >	Redhorse, River	<i>Moxostoma carinatum</i>		ON QC	Apr 1987

SPECIAL CONCERN CATEGORY (142) *continued*

Taxon/ Assessment Details	Common Name	Scientific Name	Population Name	Range of Occurrence	Assessment Date
Fishes (32) <i>continued</i>					
Δ	Sculpin, Columbia Mottled	<i>Cottus bairdi hubbsi</i>		BC	May 2000
	Sculpin, Fourhorn	<i>Myoxocephalus quadricornis</i>	Freshwater form	NT NU	Apr 1989
	Shiner, Bigmouth	<i>Notropis dorsalis</i>		MB	Apr 1985
Δ+ <>	Shiner, Bridle	<i>Notropis bifrenatus</i>		ON QC	Nov 2001
<>	Shiner, Silver	<i>Notropis photogenis</i>		ON	Apr 1987
	Stickleback, Giant	<i>Gasterosteus</i> sp.		BC	Apr 1980
	Sticklebacks, Charlotte Unarmoured	<i>Gasterosteus</i> sp.		BC	Apr 1983
	Sturgeon, Green	<i>Acipenser medirostris</i>		BC	Apr 1987
	Sturgeon, Shortnose	<i>Acipenser brevirostrum</i>		NB	Apr 1980
	Sturgeon, White	<i>Acipenser transmontanus</i>		BC	Apr 1990
Δ+ <>	Sucker, Spotted	<i>Minytrema melanops</i>		ON	Nov 2001
	Sunfish, Orangespotted	<i>Lepomis humilis</i>		ON	Apr 1989
	Sunfish, Redbreast	<i>Lepomis auritus</i>		NB	Apr 1989
Δ <>	Topminnow, Blackstripe	<i>Fundulus notatus</i>		ON	May 2001
Δ+ <>	Warmouth	<i>Lepomis gulosus</i>		ON	Nov 2001
	Whitefish, Squanga	<i>Coregonus</i> sp.		YT	Apr 1987
Δ	Wolfish, Atlantic	<i>Anarhichas lupus</i>		North Atlantic Ocean	Nov 2000
Lepidopterans (2)					
Δ <>	Monarch	<i>Danaus plexippus</i>		BC AB SK MB ON QC NB NS PE	Nov 2001
Δ	Weidemeyer's Admiral	<i>Limenitis weidemeyerii</i>		AB	May 2000
Molluscs (1)					
Δ	Oyster, Olympia	<i>Ostrea conchaphila</i>		BC	Nov 2000
Plants (40)					
Δ ↓	Ash, Blue	<i>Fraxinus quadrangulata</i>		ON	Nov 2000
	Aster, Bathurst	<i>Symphotrichum subulatum</i>		NB	Apr 1992
	Aster, Gulf of St. Lawrence	<i>Symphotrichum laurentianum</i>		QC NB PE	Apr 1989
	Aster, Willowleaf	<i>Symphotrichum praealtum</i>		ON	Apr 1999
	Bartonia, Branched	<i>Bartonia paniculata</i> ssp. <i>paniculata</i>		ON	Apr 1992
Δ	Beggarticks, Vancouver Island	<i>Bidens amplissima</i>		BC	Nov 2001
	Bulrush, Long's	<i>Scirpus longii</i>		NS	Apr 1994
	Columbo, American	<i>Frasera caroliniensis</i>		ON	Apr 1993
Δ	Fern, American Hart's-tongue	<i>Asplenium scolopendrium</i> var. <i>americanum</i>		ON	Nov 2000
	Fern, Broad Beech	<i>Phegopteris hexagonoptera</i>		ON QC	Apr 1983
Δ <>	Fern, Coastal Wood	<i>Dryopteris arguta</i>		BC	Nov 2001
	Fleabane, Provancher's	<i>Erigeron philadelphicus</i> ssp. <i>provancheri</i>		QC	Apr 1992
	Gentian, Victorin's	<i>Gentianopsis victorinii</i>		QC	Apr 1987
Δ	Goldenrod, Riddell's	<i>Solidago riddellii</i>		MB ON	Nov 2000
	Goosefoot, Smooth	<i>Chenopodium subglabrum</i>		AB SK MB	Apr 1992
	Green Dragon	<i>Arisaema dracontium</i>		ON QC	Apr 1984
	Hackberry, Dwarf	<i>Celtis tenuifolia</i>		ON	Apr 1985
Δ <>	Hairgrass, Mackenzie	<i>Deschampsia mackenzieana</i>		SK	Nov 2001
↓	Helleborine, Giant	<i>Epipactis gigantea</i>		BC	Apr 1998
Δ <>	Indian-plantain, Tuberous	<i>Arnoglossum plantagineum</i>		ON	May 2002

SPECIAL CONCERN CATEGORY (142) *continued*

Taxon/ Assessment Details	Common Name	Scientific Name	Population Name	Range of Occurrence	Assessment Date
Plants (40) <i>continued</i>					
	Lilaeopsis, Eastern	<i>Lilaeopsis chinensis</i>		NS	Apr 1987
	Locoweed, Hare-footed	<i>Oxytropis lagopus</i>		AB	Apr 1995
	Meadowfoam, Macoun's	<i>Limnanthes macounii</i>		BC	Apr 1988
▲ <>	Milk-vetch, Fernald's	<i>Astragalus robbinsii</i> var. <i>fernaldii</i>		QC NL	Nov 2001
	Oak, Shumard	<i>Quercus shumardii</i>		ON	Apr 1999
	Orchid, Eastern Prairie Fringed	<i>Platanthera leucophaea</i>		ON	Apr 1986
▲+ ↓	Pepperbush, Sweet	<i>Clethra alnifolia</i>		NS	May 2001
	Pondweed, Hill's	<i>Potamogeton hillii</i>		ON	Apr 1986
	Quillwort, Bolander's	<i>Isoetes bolanderi</i>		AB	Apr 1995
	Rose-mallow, Swamp	<i>Hibiscus moscheutos</i>		ON	Apr 1987
	Rue-anemone, False	<i>Enemion biternatum</i>		ON	Apr 1990
	Rush, New Jersey	<i>Juncus caesariensis</i>		NS	Apr 1992
▲	Tansy, Floccose	<i>Tanacetum huronense</i> var. <i>floccosum</i>		SK	May 2000
▲ <>	Thrift, Athabasca	<i>Armeria maritima</i> ssp. <i>interior</i>		SK	May 2002
	Water-hemlock, Victorin's	<i>Cicuta maculata</i> var. <i>victorinii</i>		QC	Apr 1987
▲	Willow, Felt-leaf	<i>Salix silicicola</i>		NU SK	May 2000
▲	Willow, Sand-dune	<i>Salix brachycarpa</i> var. <i>psammophila</i>		SK	May 2000
▲	Willow, Turnor's	<i>Salix turnorii</i>		SK	May 2000
▲	Woolly-heads, Tall	<i>Psilocarphus elatior</i>	Prairie population	AB SK	May 2001
▲	Yarrow, Large-headed Woolly	<i>Achillea millefolium</i> var. <i>megacephalum</i>		SK	May 2000
Mosses (0)					
Lichens (4)					
	Cryptic Paw	<i>Nephroma occultum</i>		BC	Apr 1995
▲	Lichen, Boreal Felt	<i>Erioderma pedicellatum</i>	Boreal population	NL	May 2002
	Oldgrowth Specklebelly	<i>Pseudocyphellaria rainierensis</i>		BC	Apr 1996
	Seaside Bone	<i>Hypogymnia heterophylla</i>		BC	Apr 1996

List 2. Species examined and designated in the NOT AT RISK category with geographical occurrence and date of last examination (by province / territory / ocean).

NOT AT RISK CATEGORY (146)

Taxon/ Assessment Details	Common Name	Scientific Name	Population Name	Range of Occurrence	Assessment Date
Mammals (46)					
Δ	Badger <i>taxus</i> subspecies, American	<i>Taxidae taxus taxus</i>		AB SK MB	May 2000
<>	Bear, American Black	<i>Ursus americanus</i>		YT NT NU BC AB SK MB ON QC NB NS NL	Apr 1999
Δ <>	Caribou, Woodland	<i>Rangifer tarandus caribou</i>	Newfoundland population	NL	May 2002
<>	Cottontail <i>pinetis</i> subspecies, Nuttall's	<i>Sylvilagus nuttallii pinetis</i>		AB SK	Apr 1994
	Dolphin, Atlantic White-sided	<i>Lagenorhynchus acutus</i>		Atlantic Ocean	Apr 1991
	Dolphin, Bottlenose	<i>Tursiops truncatus</i>		Atlantic Ocean	Apr 1993
	Dolphin, Common	<i>Delphinus delphis</i>		Atlantic Ocean Pacific Ocean	Apr 1991
	Dolphin, Northern Right Whale	<i>Lissodelphis borealis</i>		Pacific Ocean	Apr 1990
	Dolphin, Pacific White-sided	<i>Lagenorhynchus obliquidens</i>		Pacific Ocean	Apr 1990
	Dolphin, Risso's	<i>Grampus griseus</i>		Atlantic Ocean Pacific Ocean	Apr 1990
	Dolphin, Striped	<i>Stenella coeruleoalba</i>		Atlantic Ocean Pacific Ocean	Apr 1993
	Dolphin, White-beaked	<i>Lagenorhynchus albirostris</i>		North Atlantic Ocean	Apr 1998
✓	Gopher, Plains Pocket	<i>Geomys bursarius</i>		MB	Apr 1998
Δ <>	Lynx, Canada	<i>Lynx canadensis</i>		YT NT NU BC AB SK MB ON QC NB NS NL	May 2001
<>	Narwhal	<i>Monodon monceros</i>		Arctic Ocean	Apr 1987
	Porpoise, Dall's	<i>Phocoenoides dalli</i>		Pacific Ocean	Apr 1989
	Sea Lion, California	<i>Zalophus californianus</i>		Pacific coastal waters	Apr 1987
	Sea Lion, Steller	<i>Eumetopias jubatus</i>		Pacific coastal waters	Apr 1987
	Seal, Bearded	<i>Erignathus barbatus</i>		Arctic and Atlantic coastal waters	Apr 1994
	Seal, Grey	<i>Halichoerus grypus</i>		Atlantic coastal waters	Apr 1999
	Seal, Hooded	<i>Cystophora cristata</i>		Atlantic coastal waters	Apr 1986
	Seal, Northern Elephant	<i>Mirounga angustirostris</i>		Pacific coastal waters	Apr 1986
	Seal, Northern Fur	<i>Callorhinus ursinus</i>		Pacific coastal waters	Apr 1996
	Seal Pacific subspecies, Harbour	<i>Phoca vitulina richardsi</i>		Pacific coastal waters	Apr 1999
	Seal, Ringed	<i>Phoca hispida</i>		Arctic and Atlantic coastal waters	Apr 1989
	Squirrel, Cascade Mantled Ground	<i>Spermophilus saturatus</i>		BC	Apr 1992
	Squirrel, Fox	<i>Sciurus niger</i>		MB ON	Apr 1979
	Walrus, Atlantic	<i>Odobenus rosmarus rosmarus</i>	Eastern Arctic population	Arctic Ocean	Apr 1987
✓	Weasel, Prairie Long-tailed	<i>Mustela frenata longicauda</i>		AB SK MB	Apr 1993
	Whale, Baird's Beaked	<i>Berardius bairdii</i>		Pacific Ocean	Apr 1992
	Whale, Beluga	<i>Delphinapterus leucas</i>	Beaufort Sea / Arctic Ocean population	Arctic Ocean	Apr 1985
	Whale, Beluga	<i>Delphinapterus leucas</i>	Western Hudson Bay population	Arctic Ocean	Apr 1993
	Whale, Blainville's Beaked	<i>Mesoplodon densirostris</i>		Atlantic Ocean	Apr 1989
	Whale, Cuvier's Beaked	<i>Ziphius cavirostris</i>		Atlantic Ocean Pacific Ocean	Apr 1990

NOT AT RISK CATEGORY (146)

Taxon/ Assessment Details	Common Name	Scientific Name	Population Name	Range of Occurrence	Assessment Date
Mammals (46) <i>continued</i>					
	Whale, False Killer	<i>Pseudorca crassidens</i>		Pacific Ocean	Apr 1990
	Whale, Grey	<i>Eschrichtius robustus</i>	Northeast Pacific population	Pacific Ocean	Apr 1987
	Whale, Hubbs' Beaked	<i>Mesoplodon carlhubbsi</i>		Pacific Ocean	Apr 1989
	Whale, Long-finned Pilot	<i>Globicephala melas</i>		Atlantic Ocean	Apr 1994
	Whale, Northern Bottlenose	<i>Hyperoodon ampullatus</i>	Davis Strait population	Atlantic Ocean	Apr 1993
	Whale, Pygmy Sperm	<i>Kogia breviceps</i>		Atlantic Ocean Pacific Ocean	Apr 1994
	Whale, Short-finned Pilot	<i>Globicephala macrorhynchus</i>		Pacific Ocean	Apr 1993
	Whale, Sperm	<i>Physeter macrocephalus</i>		Atlantic Ocean Pacific Ocean	Apr 1996
	Whale, Stejneger's Beaked	<i>Mesoplodon stejnerei</i>		Pacific Ocean	Apr 1989
	Whale, True's Beaked	<i>Mesoplodon mirus</i>		Atlantic Ocean	Apr 1989
	Wolf, Northern Grey	<i>Canis lupus occidentalis</i>		YT NT NU BC AB SK MB ON QC NL	Apr 1999
	Wolf, Southern Grey	<i>Canis lupus nubilus</i>		BC	Apr 1999
Birds (35)					
✓	Bluebird, Eastern	<i>Sialia sialis</i>		AB SK MB ON QC NB NS PE	Apr 1996
Δ <>	Chat, Western Yellow-breasted Coot, American	<i>Icteria virens auricollis</i> <i>Fulica americana</i>	Prairie population	AB SK YT NT NU BC AB SK MB ON QC NB NS	Nov 2000 Apr 1991
	Cormorant, Double-crested	<i>Phalacrocorax auritus</i>		YT NT BC AB SK MB ON QC NB NS PE NL	Apr 1978
	Crane, Greater Sandhill Eagle, Bald	<i>Grus canadensis tabida</i> <i>Haliaeetus leucocephalus</i>		BC MB ON YT NT NU BC AB SK MB ON QC NB NS PE NL	Apr 1979 Apr 1984
<>	Eagle, Golden	<i>Aquila chrysaetos</i>		YT NT NU BC AB SK MB ON QC NL	Apr 1996
<>	Falcon, Prairie Flycatcher, Grey Goshawk, Northern	<i>Falco mexicanus</i> <i>Empidonax wrightii</i> <i>Accipiter gentilis atricapillus</i>		BC AB SK BC YT NT NU BC AB SK MB ON QC NB NS PE NL	Apr 1996 Apr 1992 Apr 1995
	Grebe, Red-necked	<i>Podiceps grisegena</i>		YT NT NU BC AB SK MB ON QC NS NL	Apr 1982
<>	Gyr Falcon	<i>Falco rusticolus</i>		YT NT NU BC AB SK ON QC NS PE NL	Apr 1987
	Harrier, Northern	<i>Circus cyaneus</i>		YT NT NU BC AB SK MB ON QC NB NS PE NL	Apr 1993
✓	Hawk, Cooper's	<i>Accipiter cooperii</i>		BC AB SK MB ON QC NB NS	Apr 1996
	Hawk, Red-tailed	<i>Buteo jamaicensis</i>		YT NT NU BC AB SK MB ON QC NB NS PE NL	Apr 1995
	Hawk, Rough-legged	<i>Buteo lagopus</i>		YT NT NU BC MB ON QC NL	Apr 1995
<>	Hawk, Sharp-shinned	<i>Accipiter striatus</i>		YT NT NU BC AB SK MB ON QC NB NS PE NL	Apr 1997

NOT AT RISK CATEGORY (146)

Taxon/ Assessment Details	Common Name	Scientific Name	Population Name	Range of Occurrence	Assessment Date
Birds (35) <i>continued</i>					
	Loon, Common	<i>Gavia immer</i>		YT NT NU BC AB SK MB ON QC NB NS PE NL	Apr 1997
	Loon, Yellow-billed	<i>Gavia adamsii</i>		YT NT NU BC AB MB QC	Apr 1997
	Merlin	<i>Falco columbarius</i>		YT NT NU BC AB SK MB ON QC NB NS PE NL	Apr 1985
	Owl, Boreal	<i>Aegolius funereus</i>		YT NT NU BC AB SK MB ON QC NB NS PE NL	Apr 1995
✓	Owl, Great Grey	<i>Strix nebulosa</i>		YT NT BC AB SK MB ON QC	Apr 1996
	Owl, Northern Hawk	<i>Surnia ulula</i>		YT NT BC AB SK MB ON QC NB NL	Apr 1992
	Owl, Snowy	<i>Nyctea scandiaca</i>		YT NT NU MB QC NL	Apr 1995
✓	Pelican, American White	<i>Pelecanus erythrorhynchos</i>		BC AB SK MB ON	Apr 1987
	Screech-Owl, Eastern	<i>Otus asio</i>		SK MB ON QC NB	Apr 1986
✓	Sparrow, Baird's	<i>Ammodramus bairdii</i>		AB SK MB	Apr 1996
	Sparrow, Nelson's Sharp-tailed	<i>Ammodramus nelsoni</i>		BC AB SK MB ON QC NB NS PE	Apr 1998
✓	Swan, Trumpeter	<i>Cygnus buccinator</i>		YT NT BC AB SK ON	Apr 1996
<>	Tern, Black	<i>Chlidonias niger</i>		NT BC AB SK MB ON QC NB NS	Apr 1996
✓	Tern, Caspian	<i>Sterna caspia</i>		NT BC AB SK MB ON QC NL	Apr 1999
	Tern, Common	<i>Sterna hirundo</i>		NT AB SK MB ON QC NB NS PE NL	Apr 1998
✓	Warbler, Prairie	<i>Dendroica discolor</i>		ON	Apr 1999
	Wren, Canyon	<i>Catherpes mexicanus</i>		BC	Apr 1992
	Wren, Sedge	<i>Cistothorus platensis</i>		AB SK MB ON QC NB	Apr 1993

Reptiles (4)

Δ	Brownsnake, DeKay's	<i>Storeria dekayi</i>		ON QC	May 2002
Δ	Lizard, Northwestern Alligator	<i>Elgaria coerulea principis</i>		BC	May 2002
	Racer, Western Yellow-bellied	<i>Coluber constrictor mormon</i>		BC	Apr 1991
Δ	Watersnake, Common	<i>Nerodia sipedon sipedon</i>		ON QC	May 2002

Amphibians (12)

	Ensatina	<i>Ensatina eschscholtzii</i>		BC	Apr 1999
Δ	Frog, Columbia Spotted	<i>Rana luteiventris</i>		YT BC AB	May 2000
	Frog, Northern Leopard	<i>Rana pipiens</i>	Eastern population	ON QC NB NS NL	Apr 1999
	Frog, Pickerel	<i>Rana palustris</i>		ON QC NB NS	Apr 1999
Δ	Frog, Western Chorus	<i>Pseudacris triseriata</i>		ON QC	May 2001
Δ	Mudpuppy	<i>Necturus maculosus</i>		MB ON QC	May 2000
	Salamander, Four-toed	<i>Hemidactylium scutatum</i>		ON QC NB NS	Apr 1999
	Salamander, Northern Dusky	<i>Desmognathus fuscus</i>		ON QC NB	Apr 1999

NOT AT RISK CATEGORY (146)

Taxon/ Assessment Details	Common Name	Scientific Name	Population Name	Range of Occurrence	Assessment Date
Amphibians (12) <i>continued</i>					
	Salamander, Northwestern	<i>Ambystoma gracile</i>		BC	Apr 1999
Δ	Salamander, Tiger	<i>Ambystoma tigrinum</i>	Prairie / Boreal population	AB SK MB	Nov 2001
Δ	Salamander, Western Red-backed	<i>Plethodon vehiculum</i>		BC	Nov 2001
	Treefrog, Cope's Grey	<i>Hyla chrysoscelis</i>		MB	Apr 1999
Fishes (32)					
	Bloater	<i>Coregonus hoyi</i>		ON	Apr 1988
	Chub, Hornyhead	<i>Nocomis biguttatus</i>		MB ON	Apr 1988
	Chub, River	<i>Nocomis micropogon</i>		ON	Apr 1988
	Dace, Leopard	<i>Rhinichthys falcatus</i>		BC	Apr 1990
	Darter, Least	<i>Etheostoma microperca</i>		ON	Apr 1989
	Darter, River	<i>Percina shumardi</i>		MB ON	Apr 1989
	Darter, Tessellated	<i>Etheostoma olmstedi</i>		ON QC	Apr 1993
	Herring, Blueback	<i>Alosa aestivalis</i>		NB NS	Apr 1980
	Killifish, Banded	<i>Fundulus diaphanus</i>	Mainland population	MB ON QC NB NS PE NL	Apr 1989
Δ ✓	Madtom, Brindled	<i>Noturus miurus</i>		ON	May 2001
	Minnow, Bluntnose	<i>Pimephales notatus</i>		MB ON QC	Apr 1998
	Minnow, Cutlips	<i>Exoglossum maxillingua</i>		ON QC	Apr 1994
	Minnow, Eastern Silvery	<i>Hybognathus regius</i>		ON QC	Apr 1997
	Pickerel, Chain	<i>Esox niger</i>		QC NB NS	Apr 1997
	Pickerel, Redfin	<i>Esox americanus americanus</i>		QC	Apr 1998
	Redhorse, Golden	<i>Moxostoma erythrurum</i>		MB ON	Apr 1989
Δ ✓	Sardine, Pacific	<i>Sardinops sagax</i>		Pacific Ocean	May 2002
	Sculpin, Fourhorn	<i>Myoxocephalus quadricornis</i>	Salt water form	Arctic Ocean Atlantic Ocean Pacific Ocean	Apr 1989
	Sculpin, Spoonhead	<i>Cottus ricei</i>		YT NT BC AB SK MB ON QC	Apr 1989
	Shiner, Blackchin	<i>Notropis heterodon</i>		MB ON QC	Apr 1994
	Shiner, Ghost	<i>Notropis buchanani</i>		ON	Apr 1993
	Shiner, Redfin	<i>Lythrurus umbratilis</i>		ON	Apr 1988
	Shiner, Rosyface	<i>Notropis rubellus</i>	Eastern population	ON QC	Apr 1994
	Shiner, Striped	<i>Luxilus chrysocephalus</i>		ON	Apr 1993
	Shiner, Weed	<i>Notropis texanus</i>		MB	Apr 1999
	Silverside, Brook	<i>Labidesthes sicculus</i>		ON QC	Apr 1989
✓	Stoneroller, Central	<i>Campostoma anomalum</i>		ON	Apr 1998
	Sturgeon, Lake	<i>Acipenser fulvescens</i>		AB SK MB ON QC	Apr 1986
	Sucker, Mountain	<i>Catostomus platyrhynchus</i>		BC AB SK	Apr 1991
	Sunfish, Green	<i>Lepomis cyanellus</i>		ON	Apr 1987
	Sunfish, Longear	<i>Lepomis megalotis</i>		ON QC	Apr 1987
	Y-Prickleback	<i>Allolumpenus hypochromus</i>		BC	Apr 1991
Molluscs (1)					
Δ	Capshell, Rocky Mountain	<i>Acroloxus coloradensis</i>	Western population	BC AB	Nov 2001

NOT AT RISK CATEGORY (146)

Taxon/ Assessment Details	Common Name	Scientific Name	Population Name	Range of Occurrence	Assessment Date
Plants (16)					
	Aster, Short's	<i>Symphyotrichum shortii</i>		ON	Apr 1999
	Aster, Yukon	<i>Symphyotrichum yukonense</i>		YT NT	Apr 1996
	Brickellia, Large-flowered	<i>Brickellia grandiflora</i>		BC AB	Apr 1996
	Fameflower	<i>Talinum sediforme</i>		BC	Apr 1990
	Fleabane, Dwarf	<i>Erigeron radicans</i>		AB SK	Apr 1996
	Goldenweed, Northern Mock	<i>Stenotus borealis</i>		YT	Apr 1997
	Mermaid, False	<i>Floerkea proserpinacoides</i>		ON QC NS	Apr 1984
	Phlox, Blue	<i>Phlox alyssifolia</i>		AB SK	Apr 1996
	Pink, Rush	<i>Stephanomeria runcinata</i>		AB SK	Apr 1996
	Rhododendron, Pacific	<i>Rhododendron macrophyllum</i>		BC	Apr 1997
	Sagebrush, Wood's	<i>Artemisia rupestris</i> ssp. <i>woodii</i>		YT	Apr 1997
	Sedge, Nebraska	<i>Carex nebrascensis</i>		AB	Apr 1995
	Stitchwort, Sand	<i>Stellaria arenicola</i>		AB SK	Apr 1992
	Wallflower, Narrow-leaved	<i>Erysimum angustatum</i>		YT	Apr 1993
✓	Willow, Tyrrell's	<i>Salix tyrrellii</i>		NT SK	Apr 1999
	Woolly-heads, Slender	<i>Psilocarphus tenellus</i> var. <i>tenellus</i>		BC	Apr 1996

Mosses (0)

Lichens (0)

List 3. Species examined and designated in the DATA DEFICIENT category because of insufficient scientific information, with geographical occurrence and date of last examination (by province / territory / ocean) (28 species).

DATA DEFICIENT (28)

Taxon/ Assessment Details	Common Name	Scientific Name	Population Name	Range of Occurrence	Assessment Date
Mammals (8)					
☼	Cougar	<i>Puma concolor cougar</i>	Eastern population	ON QC NB NS	Apr 1998
	Mouse <i>dychei</i> subspecies, Western Harvest	<i>Reithrodontomys megalotis dychei</i>		AB	Apr 1994
	Porpoise, Harbour	<i>Phocoena phocoena</i>	Pacific Ocean population	Pacific Ocean	Apr 1991
	Seal Atlantic subspecies, Harbour	<i>Phoca vitulina concolor</i>		Atlantic and Arctic coastal waters	Apr 1999
	Vole, Sagebrush	<i>Lemmiscus curtatus</i>		AB SK	Apr 1996
	Whale, Dwarf Sperm	<i>Kogia simus</i>		Pacific Ocean	Apr 1997
▲+ <>	Whale, Killer	<i>Orcinus orca</i>	Northwest Atlantic / Eastern Arctic populations	Arctic Ocean Atlantic Ocean	Nov 2001
	Wolf, Arctic Grey	<i>Canis lupus arctos</i>		NT NU	Apr 1999
Birds (2)					
	Poorwill, Common	<i>Phalaenoptilus nuttallii</i>		BC AB SK	Apr 1993
	Tern, Forster's	<i>Sterna forsteri</i>		BC AB SK MB ON	Apr 1996
Reptiles (2)					
Δ	Bullsnake	<i>Pituophis catenifer sayi</i>		AB SK	May 2002
Δ	Turtle, Eastern Box	<i>Terrapene carolina carolina</i>		ON	May 2002
Amphibians (0)					
Fishes (8)					
	Catfish, Flathead	<i>Pylodictis olivaris</i>		ON	Apr 1993
	Chiselmouth	<i>Acrocheilus alutaceus</i>		BC	Apr 1997
	Cisco, Bering	<i>Coregonus laurettae</i>		YT	Apr 1990
	Lamprey, Darktail	<i>Lethenteron alaskense</i>		NT	Apr 1990
Δ ☼	Madtom, Margined	<i>Noturus insignis</i>		ON QC	May 2002
	Sculpin, Spinynose	<i>Asemichthys taylori</i>		Pacific coast	Apr 1997
▲ <>	Whitefish, Lake	<i>Coregonus clupeaformis</i>	Mira River population	NS	Nov 2000
Δ ☼	Wolfish, Bering	<i>Anarhichas orientalis</i>		Arctic Ocean	Nov 2002
Lepidopterans (0)					
Molluscs (2)					
Δ	Capshell, Rocky Mountain	<i>Acroloxus coloradensis</i>	Eastern population	ON QC	Nov 2001
	Snail, Gatineau Tadpole	<i>Physella parkeri latchfordi</i>		QC	Apr 1997
Plants (4)					
	Barley, Little	<i>Hordeum pusillum</i>		AB	Apr 1993
	Goldenweed, Rabbit-brush	<i>Ericameria bloomeri</i>		BC	Apr 1997
	Pinweed, Impoverished	<i>Lechea intermedia</i> var. <i>depauperata</i>		SK	Apr 1997
	Whitlow-grass, Kananaskis	<i>Draba kananaskis</i>		AB	Apr 1992
Mosses (0)					
Lichens (2)					
Δ	Stubble, Flexuous Golden	<i>Chaenotheca servitii</i>		NS	Nov 2002
Δ	Stubble, Red Oak	<i>Phaeocalicium minutissimum</i>		QC NB	Nov 2002

RECORD OF STATUS RE-EXAMINATIONS

RECORD OF STATUS RE-EXAMINATIONS. A short history is provided for each species that has been re-examined by COSEWIC, including date(s) of examination and the status assigned. In October 1999 COSEWIC began using quantitative criteria to augment the earlier method of using status definitions to assign status. For species assessed since October 1999, the type of status report used as the basis for re-examination is indicated. Update reports focus on changes in the biological and threat information that has become available since the last time a report was prepared. For some species, COSEWIC deemed the existing report suitable for re-examination in the short-term.

Acadian Flycatcher

Designated Endangered in April 1994. Status re-examined and confirmed in November 2000. Last assessment based on an update status report.

Allegheny Mountain Dusky Salamander

Designated Special Concern in April 1998. Status re-examined and uplisted to Threatened in November 2001. Last assessment based on an existing status report with an addendum.

American Badger

Designated Not at Risk in April 1979. Original Canada-wide listing de-activated in May 2000 when the American Badger was split according to subspecies.

American Black Bear

Designated Not at Risk in April 1998. Status re-examined and confirmed in April 1999.

American Ginseng

Designated Threatened in April 1988. Status re-examined and uplisted to Endangered in April 1999. Status re-examined and confirmed Endangered in May 2000. Last assessment based on an existing status report.

American Marten (Newfoundland population)

Designated Not at Risk in April 1979. Status re-examined and uplisted to Threatened in April 1986. Status re-examined and uplisted to Endangered in April 1996. Status re-examined and confirmed Endangered in May 2000. Last assessment based on an existing status report.

American Water-willow

Designated Threatened in April 1984. Status re-examined and confirmed in May 2000. Last assessment based on an update status report.

American White Pelican

Designated Threatened in April 1978. Status re-examined and de-listed (Not at Risk) in April 1987.

Anticosti Aster

Designated Threatened in April 1990. Status re-examined and confirmed in May 2000. Last assessment based on an update status report.

Athabasca Thrift

Designated Threatened in April 1981. Status re-examined and downlisted to Special Concern in April 1999. Status re-examined and confirmed in May 2002. Last assessment based on an existing status report.

Atlantic Walrus (Northwest Atlantic population)

Extirpated around 1850. Designated Extirpated in April 1987. Status confirmed in May 2000. Last assessment based on an existing status report.

Atlantic Whitefish

Designated Endangered in April 1984. Status re-examined and confirmed in November 2000. Last assessment based on an update status report.

Aurora Trout

Designated Endangered in April 1987. Status re-examined and confirmed in May 2000. Last assessment based on an update status report.

Baird's Sparrow

Designated Threatened in April 1989. Status re-examined and de-listed (Not at Risk) in April 1996.

Banff Longnose Dace

Extinct since 1986. Designated Extinct in April 1987. Status confirmed in May 2000. Last assessment based on an existing status report.

Banff Springs Snail

Designated Threatened in April 1997. Status re-examined and uplisted to Endangered in May 2000. Last assessment based on an existing status report.

Barn Owl

Canadian range was considered as a whole when the Barn Owl was designated as Special Concern in April 1984. In April 1999, COSEWIC assessed the Western and Eastern populations of this species separately. The original listing for the Canadian range of the Barn Owl was de-activated.

Barn Owl (Eastern population)

Canadian range was considered as a whole when the Barn Owl was designated as Special Concern in April 1984. In April 1999, COSEWIC assessed the Western and Eastern populations of this species separately. The Eastern population was designated Endangered. Status re-examined and confirmed in May 2000. Last assessment based on an existing status report.

Barn Owl (Western population)

Canadian range was considered as a whole when the Barn Owl was designated as Special Concern in April 1984. In April 1999, the Western and Eastern populations of this species were assessed separately. The Western population was designated Special Concern. Status re-examined and confirmed in November 2001. Last assessment based on an existing status report.

Bashful Bulrush

Designated Special Concern in April 1986. Status re-examined and uplisted to Endangered in May 2000. Last assessment based on an update status report.

Bearded Owl-clover

Designated Endangered in April 1998. Status re-examined and confirmed in May 2000. Last assessment based on an existing status report.

Beluga Whale (St. Lawrence River population)

Designated Endangered in April 1983. Status re-examined and confirmed in April 1997.

Benthic Hadley Lake Stickleback

Extinct in 1999. Designated Extinct in April 1999. Status confirmed in May 2000. Last assessment based on an existing status report.

Benthic Paxton Lake Stickleback

Designated Threatened in April 1998. Status re-examined and confirmed in April 1999. Status re-examined and uplisted to Endangered in May 2000. Last assessment based on an existing status report.

Benthic Vananda Creek Stickleback

Designated Threatened in April 1999. Status re-examined and uplisted to Endangered in May 2000. Last assessment based on an existing status report.

Bering Wolffish

Designated Special Concern in April 1989. Status re-examined in November 2002 and changed to Data Deficient. Last assessment based on an update status report.

Bird's-foot Violet

Designated Threatened in April 1990. Status re-examined and uplisted to Endangered in May 2002. Last assessment based on an update status report.

Black Ratsnake

Designated Threatened in April 1998. Status re-examined and confirmed in May 2000. Last assessment based on an existing status report.

Black Tern

Designated Not at Risk in April 1988. Status re-examined and confirmed in April 1996.

Black-footed Ferret

Extirpated by 1974. Designated Extirpated in April 1978. Status confirmed in May 2000. Last assessment based on an existing status report.

Blackstripe Topminnow

Designated Special Concern in April 1985. Status re-examined and confirmed in May 2001. Last assessment based on an update status report.

Black-tailed Prairie Dog

Designated Special Concern in April 1978. Status re-examined and confirmed Special Concern in April 1988, April 1999 and in November 2000. Last assessment based on an existing status report.

Blue Ash

Designated Threatened in April 1983. Status re-examined and downlisted to Special Concern in November 2000. Last assessment based on an update status report.

Blue Racer

Designated Endangered in April 1991. Status re-examined and confirmed in May 2002. Last assessment based on an update status report.

Blue Walleye

Extinct since 1965. Designated Extinct in April 1985. Status confirmed in May 2000. Last assessment based on an existing status report.

Blue Whale

Canadian range was designated Special Concern in April 1983. In May 2002, the species was split into two populations: Blue Whale (Atlantic population) and Blue Whale (Pacific population). The Atlantic population and the Pacific populations were both designated Endangered in May 2002. The original listing for Blue Whale was de-activated.

Bluehearts

Designated Threatened in April 1985. Status re-examined and uplisted to Endangered in April 1998. Status re-examined and confirmed in May 2000. Last assessment based on an existing status report.

Blunt-lobed Woodsia

Designated Threatened in April 1994. Status re-examined and uplisted to Endangered in May 2000. Last assessment based on an existing status report.

Bowhead Whale (Eastern and Western Arctic Populations)

Designated Endangered in April 1980. Split into two populations (Eastern Arctic and Western Arctic) to allow a separate designation for the Western Arctic population in April 1986. Original listing was de-activated.

Bridle Shiner

Designated Special Concern in April 1999. Status re-examined and confirmed in November 2001. Last assessment based on an existing status report with an addendum.

Brindled Madtom

Designated Special Concern in April 1985. Status re-examined and de-listed (Not at Risk) in May 2001. Last assessment based on an update status report.

Buffalograss

Designated Special Concern in April 1998. Status re-examined and uplisted to Threatened in November 2001. Last assessment based on an existing status report.

Burrowing Owl

Designated Threatened in April 1979. Status re-examined and confirmed in April 1991. Status re-examined and uplisted to Endangered in April 1995. Status re-examined and confirmed Endangered in May 2000. Last assessment based on an existing status report.

Butler's Gartersnake

Designated Special Concern in April 1999. Status re-examined and uplisted to Threatened in November 2001. Last assessment based on an existing status report.

Canada Lynx

Designated Not at Risk in April 1989. Status re-examined and confirmed in May 2001. Last assessment based on an update status report.

Caribou *dawsoni* subspecies

Extinct by the 1920s. Designated Extinct in April 1984. Status confirmed in May 2000. Last assessment based on an update status report.

Caspian Tern

Designated Special Concern in April 1978. Status re-examined and de-listed (Not at Risk) in April 1999.

Central Stoneroller

Designated Special Concern in 1985. Status re-examined and de-listed (Not at Risk) in 1998.

Channel Darter

Designated Threatened in April 1993. Status re-examined and confirmed in May 2002. Last assessment based on an update status report.

Climbing Prairie Rose

Designated Special Concern in April 1986. Status re-examined and uplisted to Threatened in May 2002. Last assessment based on an update status report.

Coastal Wood Fern

Designated Special Concern in April 1998. Status re-examined and confirmed in November 2001. Last assessment based on an existing status report.

Coeur d'Alène Salamander

Designated Special Concern in April 1998. Status re-examined and confirmed in November 2001. Last assessment based on an existing status report with an addendum.

Colicroot

Designated Threatened in April 1988. Status re-examined and confirmed in November 2000. Last assessment based on an update status report.

Common Hoptree

Designated Special Concern in April 1984. Status re-examined and uplisted to Threatened in November 2002. Last assessment based on an update status report.

Cooper's Hawk

Designated Special Concern in April 1983. Status re-examined and de-listed (Not at Risk) in April 1996.

Cougar (Eastern population)

Designated Endangered in April 1978. Status re-examined in April 1998 and designated Data Deficient.

Cowichan Lake Lamprey

Designated Special Concern in April 1986. Status re-examined and confirmed in April 1998. Status re-examined and uplisted to Threatened in November 2000. Last assessment based on an existing status report.

Hooked-stem Aster

Designated Special Concern in April 1999. Status re-examined and uplisted to Threatened in May 2002. Last assessment based on an update status report.

Cucumber Tree

Designated Endangered in April 1984. Status re-examined and confirmed Endangered in April 1999 and in May 2000. Last assessment based on an existing status report.

Cultus Pygmy Sculpin

Designated Special Concern in April 1997. Status re-examined and uplisted to Threatened in November 2000. Last assessment based on an existing status report.

Deepwater Cisco

Extinct since 1952. Designated Extinct in April 1988. Status confirmed in May 2000. Last assessment based on an existing status report.

Deerberry

Designated Threatened in April 1994. Status re-examined and confirmed in November 2000. Last assessment based on an update status report.

Deltoid Balsamroot

Designated in April 1996 as Endangered. Status re-examined and confirmed Endangered in May 2000. Last assessment based on an existing status report.

Dense Blazing Star

Designated Special Concern in April 1988. Status re-examined and uplisted to Threatened in May 2001. Last assessment based on an update status report.

Drooping Trillium

Designated Endangered in April 1996. Status re-assessed and confirmed in May 2000. Last assessment based on an existing status report.

Dwarf Wedgemussel

Extirpated by 1968. Designated Extirpated in April 1999. Status confirmed in May 2000. Last assessment based on an existing status report.

Eastern Bluebird

Designated Special Concern in April 1984. Status re-examined and de-listed (Not at Risk) in April 1996.

Eastern Fox Snake

Designated Threatened in April 1999. Status re-examined and confirmed in May 2000. Last assessment based on an existing status report.

Eastern Hog-nosed Snake

Designated Special Concern in April 1997. Status re-examined and uplisted to Threatened in November 2001. Last assessment based on an existing status report.

Eastern Loggerhead Shrike
Entire Canadian range designated as Threatened in April 1986. Split according to subspecies in April 1991. The *migrans* subspecies was uplisted to Endangered in April 1991. Status re-examined and confirmed in November 2000. Last assessment based on an update status report.

Eastern Mole
Designated Special Concern in April 1980. Status re-examined and confirmed Special Concern in April 1998 and in November 2000. Last assessment based on an existing status report.

Eastern Mountain Avens
Designated Endangered in April 1986. Status re-examined and confirmed Endangered in April 1999 and May 2000. Last assessment based on an existing status report.

Eastern Prickly Pear Cactus
Designated Endangered in April 1985. Status re-examined and confirmed Endangered in April 1998 and in May 2000. Last assessment based on an existing status report.

Eastern Sand Darter
Designated Threatened in April 1994. Status re-examined and confirmed in November 2000. Last assessment based on an existing status report with an addendum.

Eastern Spiny Softshell Turtle
Designated Threatened in April 1991. Status re-examined and confirmed in May 2002. Last assessment based on an update status report.

Eastern Wolf
Designated Data Deficient in April 1999. Status re-examined in May 2001 and designated Special Concern. Last assessment based on an update status report.

Eastern Yellow-breasted Chat
Designated Special Concern in April 1994. Status re-examined and confirmed in November 2000. Last assessment based on an update status report.

Eelgrass Limpet
Extinct since 1929. Designated Extinct in April 1996. Status re-examined and confirmed in May 2000. Last assessment based on an existing status report.

Engelmann's Quillwort
Designated Endangered in April 1992. Status re-examined and confirmed in May 2001. Last assessment based on an update status report.

Enos Lake Sticklebacks
Designated Threatened in April 1988. Split into two species when re-examined in November 2002: Benthic Enos Lake Stickleback and Limnetic Enos Lake Stickleback. The original listing was de-activated. Last assessment based on an update status report.

Ermine *haidarum* subspecies
Designated Special Concern in April 1984. Status re-examined and uplisted to Threatened in May 2001. Last assessment based on an update status report.

Eskimo Curlew
Designated Endangered in April 1978. Status re-examined and confirmed Endangered in May 2000. Last assessment based on an update status report.

False Hop Sedge
Designated Threatened in April 1997. Status re-examined and uplisted to Endangered in May 2000. Last assessment based on an existing status report.

Fernald's Braya
Designated Threatened in April 1997. Status re-examined and confirmed in May 2000. Last assessment based on an existing status report with an addendum.

Fernald's Milk-vetch
Designated Special Concern in April 1997. Status re-examined and confirmed in November 2001. Last assessment based on an existing status report.

Ferruginous Hawk
Designated Threatened in April 1980. Status re-examined and downlisted to Special Concern in April 1995.

Flammulated Owl
Designated Special Concern in April 1988. Status re-examined and confirmed Special Concern in April 1999 and in November 2001. Last assessment based on an existing status report.

Fowler's Toad
Designated Special Concern in April 1986. Status re-examined and uplisted to Threatened in April 1999. Status re-examined and confirmed in November 2000. Last assessment based on an existing status report with an addendum.

Frosted Elfyn
Extirpated by 1988. Designated Extirpated in April 1999. Status confirmed in May 2000. Last assessment based on an existing status report.

Furbish's Louisewort
Designated Endangered in April 1980. Status re-examined and confirmed Endangered in April 1998 and in May 2000. Last assessment based on an existing status report.

Gattinger's Agalinis
Designated Endangered in April 1988. Status re-examined and confirmed in April 1999 and in May 2001. Last assessment based on an existing status report that was modified.

Giant Helleborine
Designated Threatened in April 1984. Status re-examined and downlisted to Special Concern in April 1998.

Golden Crest
Designated Threatened in April 1987. Status re-examined and confirmed Threatened in April 1999 and in May 2000. Last assessment based on an existing status report.

Golden Eagle
Designated Not at Risk in April 1987. Status re-examined and confirmed in April 1996.

Golden Paintbrush
Designated Threatened in April 1995. Status re-examined and uplisted to Endangered in May 2000. Last assessment based on an existing status report with an addendum.

Goldenseal
Designated Threatened in April 1991. Status re-examined and confirmed in May 2000. Last assessment based on an update status report.

Gravel Chub
Last recorded in Thames River drainage, ON in 1958. Designated Endangered in April 1985. Status re-examined and uplisted to Extirpated in April 1987. Extirpated status confirmed in May 2000. Last assessment based on an existing status report.

Great Auk
Believed to be Extinct since 1844. Designated in April 1985 based on historic records only. Status report prepared and approved by COSEWIC in 1994. Status confirmed in May 2000. Last assessment based on an existing status report.

Great Basin Spadefoot
Designated Special Concern in April 1998. Status re-examined and uplisted to Threatened in November 2001. Last assessment based on an existing status report.

Great Grey Owl
Designated Special Concern in April 1979. Status re-examined and confirmed in April 1990. Status re-examined and de-listed (Not at Risk) in April 1996.

Great Plains Toad
Designated Special Concern in April 1999. Status re-examined and confirmed Special Concern in May 2002. Last assessment based on an existing status report.

Greater Prairie-Chicken
Last reported in 1987. Designated Endangered in April 1978. Status re-examined and uplisted to Extirpated in April 1990. Status re-confirmed in May 2000. Last assessment based on an existing status report.

Greater Sage-grouse *phaeos* subspecies
Has not been reported since the 1960's. Designated Extirpated in April 1997. Extirpated status confirmed in May 2000. Last assessment based on an existing status report.

Greater Sage-grouse *urophasianus* subspecies
Given conditional designation of Threatened in April 1997. Status re-examined and uplisted to Endangered in April 1998 based on a revised status report. Status re-examined confirmed Endangered in May 2000. Last assessment based on an existing status report.

Grey Fox
Designated Special Concern in April 1979. Status re-examined and uplisted to Threatened in May 2002. Last assessment based on an update status report.

Grey Whale (Atlantic population)
Extirpated before the end of the 1800's. Designated Extirpated in April 1987. Status confirmed in May 2000. Last assessment based on an existing status report.

Grizzly Bear
Canadian range considered as one population and designated Not at Risk in April 1979. Split into two populations in April 1991 (Prairie population and Northwestern population). Original listing for "Grizzly Bear" across Canada de-activated.

Grizzly Bear (Northwestern population)
Canadian range considered as one population and designated Not at Risk in April 1979. Split into two populations in April 1991 (Prairie population and Northwestern population). Northwestern population designated Special Concern in April 1991. The status was re-examined and confirmed in May 2002. Last assessment based on an update status report.

Grizzly Bear (Prairie population)
Canadian range considered as one population and designated Not at Risk in April 1979. Split into two populations in April 1991 (Prairie population and Northwestern population). Prairie population designated Extirpated in April 1991. Status re-examined and confirmed in May 2000 and in May 2002. Last assessment based on an update status report.

Gyrfalcon
Designated Not at Risk in April 1978. Status re-examined and confirmed in April 1987.

Hairy Prairie-clover
Designated Threatened in April 1998. Status re-examined and confirmed in May 2000. Last assessment based on an existing status report with an addendum.

Harbour Porpoise (Northwest Atlantic population)
Designated Threatened in April 1990. Status re-examined and confirmed in April 1991.

Harlequin Duck (Eastern population)
The Eastern population was designated Endangered in April 1990. Status re-examined and downlisted to Special Concern in May 2001. Last assessment based on an update status report.

Heart-leaved Plantain
Designated Endangered in April 1985. Status re-examined and confirmed Endangered in April 1998 and in May 2000. Last assessment based on an existing status report.

Henslow's Sparrow
Designated Threatened in April 1984. Status re-examined and uplisted to Endangered in April 1993. Status re-examined and confirmed in November 2000. Last assessment based on an update status report.

Hoary Mountain-mint
Designated Endangered in April 1986. Status re-examined and confirmed in April 1998 and in May 2000. Last assessment based on an existing status report.

Hooded Warbler
Designated Threatened in April 1994. Status re-examined and confirmed in November 2000. Last assessment based on an update status report.

Hotwater Physa
Designated Endangered in April 1998. Status re-examined and confirmed in May 2000. Last assessment based on an existing status report.

Humpback Whale (Western North Atlantic and North Pacific populations)
The "Western North Atlantic and North Pacific populations" were given a single designation of Threatened in April 1982. Split into two populations in April 1985 (Western North Atlantic population and North Pacific population). Original listing was de-activated.

Illinois Tick-trefoil
No site records since 1888. Designated Extirpated in April 1991. Extirpated status confirmed in May 2000. Last assessment based on an existing status report.

Island Marble
Extirpated by 1910. Designated Extirpated in April 1999. Status confirmed in May 2000. Last assessment based on an existing status report.

Ivory Gull
Designated Special Concern in April 1979. Status re-examined and confirmed in April 1996 and in November 2001. Last assessment based on an existing status report.

Juniper Sedge
Designated Endangered in April 1999. Status re-examined and confirmed in May 2000. Last assessment based on an existing status report.

Karner Blue
Has not been observed since 1991. Designated Extirpated in April 1997. Extirpated status confirmed in May 2000. Last assessment based on an existing status report.

Kentucky Coffee-tree
Designated Threatened in April 1983. Status re-examined and confirmed in November 2000. Last assessment based on an update status report.

Killer Whale (North Pacific "resident" populations)
Designated Threatened in April 1999. The Killer Whale (North Pacific "resident" populations) was de-activated in November 2001 when it was split into two populations: Killer Whale (Northeast Pacific northern resident population) and Killer Whale (Northeast Pacific southern resident population). Last assessment based on an existing status report with an addendum.

Killer Whale (Northeast Pacific transient population)
Designated Special Concern in April 1999. Status re-examined and uplisted to Threatened in November 2001. Last assessment based on an existing status report with an addendum.

Killer Whale (Northwest Atlantic / Eastern Arctic populations)
Designated Data Deficient in April 1999. Status re-examined and confirmed in November 2001. Last assessment based on an existing status report with an addendum.

King Rail
Designated Special Concern in April 1985. Status re-examined and uplisted to Endangered in April 1994. Status re-examined and confirmed in November 2000. Last assessment based on an update status report.

Kirtland's Warbler
Designated Endangered in April 1979. Status re-examined and confirmed in April 1999 and in May 2000. Last assessment based on an existing status report.

Labrador Duck
Believed to be Extinct since 1875. Designated in April 1985 based on historic records only. Status report prepared and approved by COSEWIC in 1994. Status confirmed in May 2000. Last assessment based on an existing status report.

Lake Chubsucker
Designated Special Concern in April 1994. Status re-examined and uplisted to Threatened in November 2001. Last assessment based on an existing status report with an addendum.

Lake Utopia Dwarf Smelt
Designated Threatened in April 1998. Status re-examined and confirmed in May 2000. Last assessment based on an existing status report.

Lake Whitefish (Mira River population)
Designated Data Deficient in April 1999 and in November 2000. Last assessment based on an existing status report.

Large Whorled Pogonia
Designated Endangered in April 1986. Status re-examined and confirmed in April 1998 and in May 2000. Last assessment based on an existing status report.

Least Bittern
Designated Special Concern in April 1988. Status re-examined and confirmed in April 1999. Status re-examined and uplisted to Threatened in November 2001. Last assessment based on an existing status report.

Leatherback Turtle
Designated Endangered in April 1981. Status re-examined and confirmed in May 2001. Last assessment based on an update status report.

Lewis's Woodpecker
Designated Special Concern in April 1999. Status re-examined and confirmed in November 2001. Last assessment based on an existing status report.

Limnetic Hadley Lake Stickleback
Extinct in 1999. Designated Extinct in April 1999. Status confirmed in May 2000. Last assessment based on an existing status report.

Limnetic Paxton Lake Stickleback
Designated Threatened in April 1998. Status re-examined and confirmed in April 1999. Status re-examined and uplisted to Endangered in May 2000. Last assessment based on an existing status report.

Limnetic Vananda Creek Stickleback
Designated Threatened in April 1999. Status re-examined and uplisted to Endangered in May 2000. Last assessment based on an existing status report.

Loggerhead Shrike
Entire Canadian range was designated as Threatened in April 1986. The *excubitorides* and the *migrans* subspecies were designated separately in April 1991, and the original listing was de-activated.

Long-billed Curlew
Designated Special Concern in April 1992. Status re-examined and confirmed in November 2002. Last assessment based on an update status report.

Long's Braya
Designated Endangered in April 1997. Status re-examined and confirmed in May 2000. Last assessment based on an existing status report with an addendum.

Longjaw Cisco
Extinct since 1975. Designated Extinct in April 1985. Status confirmed in May 2000. Listing was de-activated in May 2002 because it was concluded that this species is a synonym of the Shortjaw Cisco, *Coregonus zenithicus*, which was designated as Threatened in 1987. Last assessment based on an update status report.

Louisiana Waterthrush
Designated Special Concern in April 1991. Status re-examined and confirmed in April 1996.

Mackenzie Hairgrass
Designated Special Concern in April 1999. Status re-examined and confirmed in November 2001. Last assessment based on an existing status report.

Marbled Murrelet
Designated Threatened in April 1990. Status re-examined and confirmed in November 2000. Last assessment based on an update status report.

Margined Madtom
Designated Threatened in April 1989. Status re-examined in May 2002 and placed in the Data Deficient category. Last assessment based on an update status report.

Maritime Ringlet
Designated Endangered in April 1997. Status re-examined and confirmed in May 2000. Last assessment based on an existing status report.

Massasauga
Designated Threatened in April 1991. Status re-examined and confirmed in November 2002. Last assessment based on an update status report.

Mexican Mosquito-fern
Designated Threatened in April 1984. Status re-examined and confirmed in April 1998 and in May 2000. Last assessment based on an existing status report.

Monarch
Designated Special Concern in April 1997. Status re-examined and confirmed in November 2001. Last assessment based on an existing status report.

Morrison Creek Lamprey
Designated Threatened in April 1999. Status re-examined and uplisted to Endangered in May 2000. Last assessment based on an existing status report.

Mountain Beaver
Designated Not at Risk in April 1984. Status re-examined and uplisted to Special Concern in April 1999. Status re-examined and confirmed as Special Concern in November 2001. Last assessment based on an existing status report.

Mountain Plover
Designated Endangered in April 1987. Status re-examined and confirmed in November 2000. Last assessment based on an update status report.

Narwhal
Designated Not at Risk in April 1986. Status re-examined and confirmed in April 1987.

Nodding Pogonia
Designated Threatened in April 1988. Status re-examined and uplisted to Endangered in April 1999. Status re-examined and confirmed Endangered in May 2000. Last assessment based on an existing status report.

Nooksack Dace
Designated Endangered in April 1996. Status re-examined and confirmed in May 2000. Last assessment based on an existing status report.

Northern Abalone
Designated Threatened in April 1999. Status re-examined and confirmed in May 2000. Last assessment based on an existing status report.

Northern Bottlenose Whale (Scottian Shelf population)
Designated Special Concern in April 1996. Status re-examined and uplisted to Endangered in November 2002. Last assessment based on an existing status report with an addendum.

Northern Cricket Frog
Designated Endangered in April 1990. Status re-examined and confirmed in May 2001. Last assessment based on an update status report.

Northern Goshawk (*laingi* subspecies)
Designated Special Concern in April 1995. Status re-examined and uplisted to Threatened in November 2000. Last assessment based on an update status report.

Northern Leopard Frog (Southern Mountain population)
Designated Endangered in April 1998. Status re-examined and confirmed in May 2000. Last assessment based on an existing status report.

Northern Leopard Frog (Western Boreal/Prairie populations)
Designated Special Concern in April 1998. Status re-examined and confirmed in November 2002. Last assessment based on an existing status report.

Northern Madtom
Examined in April 1993 and placed in the Data Deficient category. Re-examined in April 1998 and designated Special Concern. Status re-examined and uplisted to Endangered in November 2002. Last assessment based on an existing status report with an addendum.

Northern Red-legged Frog
Designated Special Concern in April 1999. Status re-examined and confirmed in May 2002. Last assessment based on an existing status report.

Northern Riffleshell
Designated Endangered in April 1999. Status re-examined and confirmed in May 2000. Last assessment based on an existing status report with an addendum.

Northern Spotted Owl
Designated Endangered in April 1986. Status re-examined and confirmed in April 1999 and in May 2000. Last assessment based on an existing status report.

Nuttall's Cottontail *pinctis* subspecies
Designated Not at Risk in 1994. Status re-examined and confirmed in April 1994.

Oregon Spotted Frog
Designated Endangered in an emergency listing in November 1999. Status re-examined and confirmed in May 2000. Assessment based on a new status report.

Pacific Giant Salamander
Designated Special Concern in April 1989. Status re-examined and uplisted to Threatened in November 2000. Last assessment based on an update status report.

Pacific Sardine
Designated Special Concern in April 1987. Status re-examined and de-listed (designated Not at Risk) in May 2002. Last assessment based on an update status report.

Pacific Water Shrew
Designated Threatened in April 1994. Status re-examined and confirmed Threatened in May 2000. Last assessment based on an existing status report with an addendum.

Paddlefish
Disappeared from Canada in approximately 1917. Designated Extirpated in April 1987. Status confirmed in May 2000. Last assessment based on an existing status report.

Pallid Bat
Designated Special Concern in April 1988. Status re-examined and uplisted to Threatened in May 2000. Last assessment based on an update status report.

Passenger Pigeon
Believed to be Extinct since 1914. Designated in April 1985 based on historic records only. Status report prepared and approved by COSEWIC in 1994. Status confirmed in May 2000. Last assessment based on an existing status report.

Peary Caribou
The Canadian range of the Peary Caribou was considered as a whole in April 1979 and designated Threatened. In April 1991, the population was split to allow designation of three separate populations (Banks Island, High Arctic and Low Arctic populations). The original listing was de-activated

Peregrine Falcon *anatum* subspecies
Designated Endangered in April 1978. Status re-examined and downlisted to Threatened in April 1999. Status re-assessed and confirmed Threatened in May 2000. Last assessment based on an existing status report.

Peregrine Falcon *pealei* subspecies
Designated Special Concern in April 1978. Status re-examined and confirmed in April 1999 and in November 2001. Last assessment based on an existing status report.

Peregrine Falcon *tundrius* subspecies
Designated Threatened in April 1978. Status re-examined and downlisted to Special Concern in April 1992.

Phantom Orchid
Designated Special Concern in April 1992. Status re-examined and uplisted to Threatened in May 2000. Last assessment based on an update status report.

Pink Coreopsis
Designated Endangered in April 1984. Status re-examined and confirmed Endangered in April 1999 and in May 2000. Last assessment based on an existing status report.

Pink Milkwort
Designated Endangered in April 1984. Status re-examined and confirmed Endangered in April 1998 and in May 2000. Last assessment based on an existing status report.

Piping Plover
Entire Canadian population designated Threatened in April 1978. Status re-examined and uplisted to Endangered in April 1985. In May 2001, the species was re-examined and split into two groups according to subspecies. The *melodus* subspecies and *circuminctus* subspecies were each designated Endangered in May 2001. The original listing for the entire Canadian population was de-activated.

Pitcher's Thistle
Designated Threatened in April 1988. Status re-examined and uplisted to Endangered in April 1999. Status re-examined and confirmed Endangered in May 2000. Last assessment based on an existing status report.

Pixie Poacher
Designated Data Deficient in April 1991. Status re-examined and de-activated in November 2001. Last assessment based on an update status report.

Plains Pocket Gopher
Designated Special Concern in April 1979. Status re-examined and de-listed (Not at Risk) in April 1998.

Plymouth Gentian
Designated Threatened in April 1984. Status re-examined and confirmed in April 1999 and in May 2000. Last assessment based on an existing status report.

Polar Bear
Designated Not at Risk in April 1986. Status re-examined and uplisted to Special Concern in April 1991. Status re-examined and confirmed as Special Concern in April 1999 and in November 2002. Last assessment based on an existing status report with an addendum.

Prairie Falcon
Designated Not at Risk in April 1978. Status re-examined and confirmed in April 1982 and in April 1996.

Prairie Long-tailed Weasel
Designated Threatened in April 1982. Status re-examined and de-listed (Not at Risk) in April 1993.

Prairie Lupine
Designated Endangered in April 1996. Status re-examined and confirmed in May 2000. Last assessment based on an existing status report.

Prairie Warbler
Designated Special Concern in April 1985. Status re-examined and de-listed (Not at Risk) in April 1999.

Prothonotary Warbler
Designated Special Concern in April 1984. Status re-examined and uplisted to Endangered in April 1996. Status re-examined and confirmed in May 2000. Last assessment based on an existing status report.

Pugnose Minnow
Designated Special Concern in April 1985. Status re-examined and confirmed in May 2000. Last assessment based on an update status report.

Pugnose Shiner
Designated Special Concern in April 1985. Status re-examined and uplisted to Endangered in November 2002. Last assessment based on an update status report.

Purple Twayblade
Designated Threatened in April 1989. Status re-examined and uplisted to Endangered in April 1999. Status re-examined and confirmed as Endangered in May 2001. Last assessment based on an existing status report that was modified.

Pygmy Short-horned Lizard (British Columbia population)
Last reported in 1898. Designated Extirpated in April 1992. Status confirmed in May 2000. Last assessment based on an existing status report.

Queen Snake
Designated Threatened in April 1999. Status re-examined and confirmed in May 2000. Last assessment based on an existing status report.

Rayed Bean
Designated Endangered in April 1999. Status re-examined and confirmed in May 2000. Last assessment based on an existing status report.

Red Mulberry
Designated Threatened in April 1987. Status re-examined and uplisted to Endangered in April 1999. Status re-examined and confirmed Endangered in May 2000. Last assessment based on an existing status report.

Redroot
Designated Threatened in April 1994. Status re-examined and confirmed in May 2000. Last assessment based on an existing status report.

Red-shouldered Hawk
Designated Special Concern in April 1983. Status re-examined and confirmed in April 1996.

Right Whale
Designated Endangered in 1980. Status re-examined and confirmed Endangered in April 1985 and in April 1990.

Rigid Apple Moss
Designated Threatened in April 1997. Status re-examined and uplisted to Endangered in May 2000. Last assessment based on an existing status report with an addendum.

River Redhorse
Designated Special Concern in April 1983. Status re-examined and confirmed in April 1987.

Roseate Tern
Designated Threatened in April 1986. Status re-examined and uplisted to Endangered in April 1999. Endangered status re-examined and confirmed in October 1999. Last assessment based on an existing status report.

Ross's Gull
Designated Special Concern in April 1981. Status re-examined and confirmed in April 1996. Status re-examined and uplisted to Threatened in November 2001. Last assessment based on an existing status report.

Rosyface Shiner (Manitoba population)
Designated Special Concern in April 1994. Status re-examined and uplisted to Threatened in November 2001. Last assessment based on an existing status report.

Round-leaved Greenbrier (Great Lakes Plains population)
Designated Threatened in April 1994. Status re-examined and confirmed in May 2001. Last assessment based on an existing status report with an addendum.

Sage Thrasher
Designated Endangered in April 1992. Status re-examined and confirmed in November 2000. Last assessment based on an update status report.

Salish Sucker
Designated Endangered in April 1986. Status re-examined and confirmed in November 2002. Last assessment based on an update status report.

Savannah Sparrow *princeps* subspecies
Designated Special Concern in April 1979. Status re-examined and confirmed Special Concern in May 2000. Last assessment based on an update status report.

Scarlet Ammannia
Designated Endangered in April 1999. Status re-examined and confirmed in May 2001. Last assessment based on an existing status report.

Sea Mink
Believed Extinct since 1894. Designated Extinct in April 1986. Status confirmed in May 2000. Last assessment based on an existing status report.

Sea Otter
Designated Endangered in April 1978. Status re-examined and confirmed Endangered in April 1986. Status re-examined and downlisted to Threatened in April 1996. Status re-examined and confirmed Threatened in May 2000. Last assessment based on an existing status report.

Seaside Birds-foot Lotus
Designated Endangered in April 1996. Status re-examined and confirmed in May 2000. Last assessment based on an existing status report.

Seaside Centipede
Designated Endangered in April 1996. Status re-examined and confirmed in May 2000. Last assessment based on an existing status report.

Sharp-shinned Hawk
Designated Not at Risk in April 1986. Status re-examined and confirmed in April 1997.

Sharp-tailed Snake
Designated Endangered in April 1999. Status re-examined and confirmed in October 1999. Last assessment based on an existing status report.

Shorthed Sculpin
Designated Threatened in April 1984. Status re-examined and confirmed Threatened in May 2001. Last assessment based on an update status report.

Showy Goldenrod
Designated Endangered in April 1999. Status re-examined and confirmed in May 2000. Last assessment based on an existing status report.

Shumard Oak
Designated Special Concern in April 1984. Status re-examined and confirmed in April 1999.

Silver Chub
Designated Special Concern in April 1985. Status re-examined and confirmed in May 2001. Last assessment based on an update status report.

Silver Shiner
Designated Special Concern in April 1983. Status re-examined and confirmed in April 1987.

Skinner's Agalinis
Designated Endangered in April 1988. Status re-examined and confirmed Endangered in April 1999 and in May 2000. Last assessment based on an existing status report.

Slender Bush-clover
Designated Endangered in April 1986. Status re-examined and confirmed Endangered in April 1999 and in May 2000. Last assessment based on an existing status report.

Slender Mouse-ear-cress
Designated Endangered in April 1992. Status re-examined and downlisted to Threatened in May 2000. Last assessment based on an update status report with an addendum.

Small White Lady's-slipper
Designated Endangered in April 1981. Status re-examined and confirmed in April 1999 and in May 2000. Last assessment based on an existing status report.

Small Whorled Pogonia
Designated Endangered in April 1982. Status re-examined and confirmed in April 1998 and in May 2000. Last assessment based on an existing status report.

Small-flowered Lipocarpa
Designated Threatened in April 1992. Status re-examined and uplisted to Endangered in November 2002. Last assessment based on an update status report.

Small-flowered Sand-verbena
Designated Threatened in April 1992. Re-examined and uplisted to Endangered in November 2002. Last assessment based on an update status report.

Soapweed
Designated Special Concern in April 1985. Status re-examined and uplisted to Threatened in May 2000. Last assessment based on an update status report.

Southern Maidenhair Fern
Designated Endangered in April 1984. Status re-examined and confirmed in April 1998 and in May 2000. Last assessment based on an existing status report.

Speckled Dace
Designated Special Concern in April 1980. Status re-examined and uplisted to Endangered in November 2002. Last assessment based on an update status report.

Spotted Gar
Designated Special Concern in April 1983. Status re-examined and confirmed Special Concern in April 1994. Status re-examined and uplisted to Threatened in November 2000. Last assessment based on an existing status report.

Spotted Sucker
Designated Special Concern in April 1983. Status re-examined and confirmed in April 1994 and in November 2001. Last assessment based on an existing status report with an addendum.

Spotted Wintergreen
Designated Endangered in April 1987. Status re-examined and confirmed Endangered in April 1998 and in May 2000. Last assessment based on an existing status report.

Sprague's Pipit
Designated Threatened in April 1999. Status re-examined and confirmed in May 2000. Last assessment based on an existing status report.

Spring Blue-eyed Mary
No site records since 1954. Designated Extirpated in April 1987. Extirpated status confirmed in May 2000. Last assessment based on an existing status report.

Spring Salamander
Designated Special Concern in April 1999. Status re-examined and confirmed in May 2002. Last assessment based on an existing status report.

Sweet Pepperbush
Designated Threatened in April 1986. Status re-examined and confirmed in April 1998. Status re-examined and downlisted to Special Concern in May 2001. Last assessment based on an existing status report that was modified.

Swift Fox
Last seen in Saskatchewan in 1928. Designated Extirpated in April 1978. Status re-examined and downlisted to Endangered in April 1998 after successful re-introductions. Status re-examined and confirmed Endangered in May 2000. Last assessment based on an existing status report.

Thread-leaved Sundew
Designated Endangered in April 1991. Status re-examined and confirmed in May 2001. Last assessment based on an update status report.

Tiny Cryptanthus
Designated Endangered in April 1998. Status re-examined and confirmed in May 2000. Last assessment based on an existing status report.

Toothcup
Designated Endangered in April 1999. Status re-examined and confirmed in May 2000. Last assessment based on an existing status report.

Trumpeter Swan
Designated Special Concern in April 1978. Status re-examined and de-listed (Not at Risk) in April 1996.

Tuberous Indian-plantain
Designated Special Concern in April 1988. Status re-examined and confirmed in April 1999 and in May 2002. Last assessment based on an existing status report.

Tyrrell's Willow
Designated Threatened in April 1981. Status re-examined and de-listed (Not at Risk) in April 1999.

Van Brunt's Jacob's-ladder
Designated Threatened in April 1994. Status re-examined and confirmed in November 2002. Last assessment based on an update status report.

Vancouver Island Marmot
Designated Endangered in April 1978. Status re-examined and confirmed Endangered in April 1997 and in May 2000. Last assessment based on an existing status report with an addendum.

Virginia Goat's-ruie
Designated Threatened in April 1996. Status re-examined and uplisted to Endangered in May 2000. Last assessment based on an existing status report with an addendum.

Warmouth
Designated Special Concern in April 1994. Status re-examined and confirmed in November 2001. Last assessment based on an existing status report with an addendum.

Water-pennywort
Designated Endangered in April 1985. Status re-examined and downlisted to Threatened in April 1999. Status re-examined and confirmed Threatened in May 2000. Last assessment based on an existing status report.

Water-plantain Buttercup
Designated Endangered in April 1996. Status re-examined and confirmed in May 2000. Last assessment based on an existing status report.

Wavy-rayed Lampmussel
Designated Endangered in April 1999. Status re-examined and confirmed in October 1999. Last assessment based on an existing status report.

Western Blue-flag
Designated Threatened in April 1990. Status re-examined and confirmed in May 2000. Last assessment based on an update status report.

Western Prairie Fringed Orchid
Designated Endangered in April 1993. Status re-examined and confirmed in May 2000. Last assessment based on an update status report.

Western Screech-Owl
 Entire western range was placed in the Data Deficient category in April 1995. In May 2002, the species was re-examined and split into two groups according to subspecies. The *kermicottii* subspecies was designated Special Concern and the *macfarlanei* subspecies was designated Threatened in May 2002. The original listing was de-activated. Last assessment based on an update status report.

Western Silvery Aster
 Designated Special Concern in 1988. Status re-examined and uplisted to Threatened in May 2000. Last assessment based on an update status report.

Western Silvery Minnow
 Designated Special Concern in April 1997. Status re-examined and uplisted to Threatened in November 2001. Last assessment based on an existing status report with an addendum.

Western Spiderwort
 Designated Threatened in April 1992. Status re-examined and confirmed in November 2002. Last assessment based on an update status report.

Western Yellow-breasted Chat (British Columbia population)
 The British Columbia population of the *auricolis* subspecies was designated Threatened in April 1994. Status re-examined and uplisted to Endangered in November 2000. Last assessment based on an update status report.

Western Yellow-breasted Chat (Prairie population)
 The Prairie population of the *auricolis* subspecies was designated Not at Risk in April 1994. Status re-examined and confirmed in November 2000. Last assessment based on an update status report.

White Prairie Gentian
 Designated Endangered in April 1991. Status re-examined and confirmed in May 2001. Last assessment based on an update status report.

White Wood Aster
 Designated Threatened in April 1995. Status re-examined and confirmed in November 2002. Last assessment based on an update status report.

White-headed Woodpecker
 Designated Threatened in April 1992. Status re-examined and uplisted to Endangered in November 2000. Last assessment based on an update status report.

White-top Aster
 Designated Threatened in April 1996. Status re-examined and confirmed in May 2000. Last assessment based on an existing status report with an addendum.

Whooping Crane
 Designated Endangered in April 1978. Status re-examined and confirmed in November 2000. Last assessment based on an update status report.

Wild Hyacinth
 Designated Special Concern in April 1990. Re-examined and uplisted to Threatened in May 2002. Last assessment based on an update status report.

Wolverine
 Canadian range considered as one population in April 1982 and designated Special Concern. Split into two populations in April 1989 (Western and Eastern populations). Original listing was de-activated.

Wood Bison
 Designated Endangered in April 1978. Status re-examined and downlisted to Threatened in April 1988. Status re-examined and confirmed Threatened in May 2000. Last assessment based on an update status report.

Woodland Caribou (Atlantic-Gaspésie population)
 Atlantic-Gaspésie population designated as Threatened in April 1984. Status re-examined and uplisted to Endangered in May 2000. Status re-examined and confirmed in May 2002. Last assessment based on an update status report.

Woodland Caribou (Boreal population)
 Boreal population designated Threatened in May 2000. This newly defined population is comprised of a portion of the de-activated "Western population" and all of the de-activated "Labrador-Ungava population." Status re-examined and confirmed in May 2002. Last assessment based on an update status report.

Woodland Caribou (Labrador-Ungava population)
 Labrador-Ungava population designated Not at Risk in April 1984. Labrador-Ungava population de-activated in May 2000. Former Labrador-Ungava population is contained within the Boreal population.

Woodland Caribou (Newfoundland population)
 Newfoundland population designated Not at Risk in April 1984. Status re-examined and confirmed in May 2000 and in May 2002. Last assessment based on an update status report.

Woodland Caribou (Northern Mountain population)
 Northern Mountain population designated Not at Risk in May 2000. This population was formerly designated as part of the "Western population" (now de-activated). Status re-examined and uplisted to Special Concern in May 2002. Last assessment based on an update status report.

Woodland Caribou (Southern Mountain population)
 Southern Mountain population designated Threatened in May 2000. This population was formerly designated as part of the "Western population" (now de-activated). Status re-examined and confirmed in May 2002. Last assessment based on an update status report.

Woodland Caribou (Western population)
 Western population designated Special Concern in April 1984. Western population de-activated in May 2000. Former Western population is contained within the following newly designated populations: Northern Mountain, Southern Mountain and Boreal.

Woodland Vole
 Designated Special Concern in April 1998. Status re-examined and confirmed in November 2001. Last assessment based on an existing status report.

Wood-poppy
 Designated Endangered in April 1993. Status re-examined and confirmed in May 2000. Last assessment based on an existing status report with an addendum.

Yellow Montane Violet
 Designated Threatened in April 1995. Status re-examined and confirmed in May 2000. Last assessment based on an existing status report.

Yellow Rail
 Designated Special Concern in April 1999. Status re-examined and confirmed in November 2001. Last assessment based on an existing status report.

LIST OF NAME CHANGES

Cross-reference of common and scientific names (including population names, where applicable) for COSEWIC-listed species. Most of the names in the list have been used by COSEWIC in the past but are no longer in use. Some common synonyms are also included.

Previous Name(s) or Synonym	Current Common Name or Scientific Name (Population)
<i>Abronia micrantha</i>	<i>Tripterocalyx micranthus</i>
Acadian Whitefish	Atlantic Whitefish
<i>Acris crepitans blanchardi</i>	<i>Acris crepitans</i>
Anatum Peregrine Falcon	Peregrine Falcon <i>anatum</i> subspecies
Apple Moss	Rigid Apple Moss
<i>Ascaphus truei</i>	<i>Ascaphus montanus</i>
<i>Ascaphus truei</i> (Pacific Coast population); <i>Ascaphus truei</i> (Southern Mountain population)*	<i>Ascaphus truei</i>
<i>Aster anticostensis</i>	<i>Symphyotrichum anticostense</i>
<i>Aster curtus</i>	<i>Sericocarpus rigidus</i>
<i>Aster divaricatus</i>	<i>Eurybia divaricata</i>
<i>Aster laurentianus</i>	<i>Symphyotrichum laurentianum</i>
<i>Aster praealtus</i>	<i>Symphyotrichum praealtum</i>
<i>Aster prenanthoides</i>	<i>Symphyotrichum prenanthoides</i>
<i>Aster shortii</i>	<i>Symphyotrichum shortii</i>
<i>Aster subulatus</i> var. <i>obtusifolius</i>	<i>Symphyotrichum subulatum</i>
<i>Aster yukonensis</i>	<i>Symphyotrichum yukonense</i>
Bathurst Aster (Bathurst population)	Bathurst Aster
Benthic Texada Island Stickleback	Benthic Paxton Lake Stickleback
Blackline Prickleback	Pighead Prickleback
Blanchard's Cricket Frog	Northern Cricket Frog
Blue-eyed Mary	Spring blue-eyed Mary
Bowl Limpet	Eelgrass Limpet
<i>Bufo woodhousii fowleri</i>	<i>Bufo fowleri</i>
<i>Cacalia plantaginea</i>	<i>Arnoglossum plantagineum</i>
Common Hop-tree	Common Hoptree
<i>Coregonus canadensis</i>	<i>Coregonus huntsmani</i>
<i>Coregonus clupeaformis</i>	<i>Coregonus clupeaformis</i> (Mira River population)
<i>Coregonus clupeaformis</i>	<i>Coregonus clupeaformis</i> (Lake Simcoe population)
Eastern Massasauga Rattlesnake	Massasauga
Eastern Massasauga	Massasauga
<i>Emydoidea blandingii</i>	<i>Emydoidea blandingii</i> (Nova Scotia population)
Ermine (Queen Charlotte Islands population)	Ermine <i>haidarum</i> subspecies
Few-flowered Club-rush	Bashful Bulrush
<i>Gasterosteus aculeatus</i>	<i>Gasterosteus</i> sp.
<i>Gentiana victorinii</i>	<i>Gentianopsis victorinii</i>
Goat's-rue	Virginia Goat's-rue
Grey Wolf	Northern Grey Wolf
Grey Wolf	Eastern Wolf
Grey Wolf	Southern Grey Wolf
Grey Wolf	Arctic Grey Wolf
Grizzly Bear [no population name]	Grizzly Bear (Northwestern population)
<i>Gymnocladus dioica</i>	<i>Gymnocladus dioicus</i>
<i>Haplopappus macleanii</i>	<i>Stenotus borealis</i>
Harbour Seal	Harbour Seal Pacific subspecies
Harbour Seal	Harbour Seal Atlantic subspecies
Harbour Seal (Lac des Loups Marins landlocked population)	Harbour Seal Lacs des Loups Marins subspecies
<i>Icteria virens virens</i> (Eastern population)	<i>Icteria virens virens</i>

*now known as *Ascaphus montanus*

LIST OF NAME CHANGES *continued*

Previous Name(s) or Synonym	Current Common Name or Scientific Name (Population)
<i>Incisalia irus</i>	<i>Callophrys [Incisalia] irus</i>
"Ipswich" Savannah Sparrow	Savannah Sparrow <i>princeps</i> subspecies
<i>Isopyrum biternatum</i>	<i>Enemion biternatum</i>
Lake Lamprey	Cowichan Lake Lamprey
Lake Simcoe Whitefish	Lake Whitefish (Lake Simcoe population)
<i>Lanius ludovicianus excubitorides</i> (Prairie population)	<i>Lanius ludovicianus excubitorides</i>
<i>Lanius ludovicianus migrans</i> (Eastern population)	<i>Lanius ludovicianus migrans</i>
Lilaeopsis	Eastern Lilaeopsis
Limnetic Texada Island Stickleback	Limnetic Paxton Lake Stickleback
Loggerhead Shrike (Eastern population)	Eastern Loggerhead Shrike
Loggerhead Shrike (Prairie population)	Prairie Loggerhead Shrike
Long-tailed Weasel (Prairie population)	Prairie Long-tailed Weasel
<i>Lottia alveus</i>	<i>Lottia alveus alveus</i>
Lynx	Canada Lynx
MacLean's Goldenweed	Northern Mock Goldenweed
Mexican Mosquito Fern	Mexican Mosquito-fern
Mira River Whitefish	Lake Whitefish (Mira River population)
Mountain Dusky Salamander	Allegheny Mountain Dusky Salamander
<i>Mustela erminea haidarum</i> (Queen Charlotte Islands population)	<i>Mustela erminea haidarum</i>
North Sea Beaked Whale	Sowerby's Beaked Whale
Northern Bottlenose Whale	Northern Bottlenose Whale (Davis Strait population)
Northern Bottlenose Whale (Gully population)	Northern Bottlenose Whale (Scotian Shelf population)
Northern Leopard Frog (Prairie population)	Northern Leopard Frog (Western Boreal/Prairie populations)
Nuttall's Cottontail (British Columbia population)	Nuttall's Cottontail <i>nuttallii</i> subspecies
Nuttall's Cottontail (Prairie population)	Nuttall's Cottontail <i>pinetis</i> subspecies
Pacific Great Blue Heron	Great Blue Heron <i>fannini</i> subspecies
<i>Panax quinquefolium</i>	<i>Panax quinquefolium</i>
Peale's Peregrine Falcon	Peregrine Falcon <i>pealei</i> subspecies
<i>Polemonium van-bruntiae</i>	<i>Polemonium vanbruntiae</i>
Queen Charlotte Goshawk	Northern Goshawk <i>laingi</i> subspecies
<i>Rangifer tarandus dawsoni</i> (Queen Charlotte Islands population)	<i>Rangifer tarandus dawsoni</i>
Sage Grouse (British Columbia population)	Greater Sage-grouse <i>phaios</i> subspecies
Sage Grouse (Prairie population)	Greater Sage-grouse <i>urophasianus</i> subspecies
Salamander Mussel	Mudpuppy Mussel
Sand Verbena	Small-flowered Sand-verbena
<i>Scirpus verecundus</i>	<i>Trichophorum planifolium</i>
<i>Simpsonais ambigua</i>	<i>Simpsonaias ambigua</i>
<i>Speotyto cunicularia</i>	<i>Athene cunicularia</i>
Spiny Softshell Turtle	Eastern Spiny Softshell Turtle
Spotted Owl	Northern Spotted Owl
<i>Strix occidentalis</i>	<i>Strix occidentalis caurina</i>
Tailed Frog (Pacific Coast population)	Coast Tailed Frog
Tailed Frog (Southern Mountain population)	Rocky Mountain Tailed Frog
Tundra Peregrine Falcon	Peregrine Falcon <i>tundrius</i> subspecies

LIST OF NAME CHANGES *continued*

Previous Name(s) or Synonym	Current Common Name or Scientific Name (Population)
Van Brunt's Jacob's Ladder	Van Brunt's Jacob's-ladder
<i>Virgulus sericeus</i>	<i>Symphotrichum sericeum</i>
Western Harvest Mouse (British Columbia population)	Western Harvest Mouse <i>megalotis</i> subspecies
Western Harvest Mouse (Prairie population)	Western Harvest Mouse <i>dychei</i> subspecies
Western Silver-leaved Aster	Western Silvery Aster
Woodland Caribou (Queen Charlotte Islands population);	Caribou <i>dawsoni</i> subspecies
Woodland Caribou Dawson's subspecies	Western Yellow-breasted Chat (British Columbia population)
Yellow-breasted Chat (British Columbia population)	Eastern Yellow-breasted Chat
Yellow-breasted Chat (Eastern population)	Western Yellow-breasted Chat (Prairie population)
Yellow-breasted Chat (Prairie population)	

COSEWIC

Chair, COSEWIC

Dr. Marco Festa-Bianchet
Département de biologie
Université de Sherbrooke
Sherbrooke, QC, J1K 2R1

SPECIES SPECIALIST SUBCOMMITTEES AND ABORIGINAL TRADITIONAL KNOWLEDGE SUBCOMMITTEE (2002-2003)

Amphibians & Reptiles

Co-chair
Dr. David M. Green
Redpath Museum, McGill
University
859 Sherbrooke Street West
Montreal, QC H3A 2K6

Co-chair
Dr. Ronald J. Brooks
Department of Zoology
College of Biological Science
University of Guelph
Guelph, ON, N1G 2W1

Terrestrial Mammals

Co-chair
Dr. Brock Fenton
Department of Biology
York University
North York, ON, M3J 1P3

Co-chair
Dr. Marco Festa-Bianchet
Département de biologie
Université de Sherbrooke
Sherbrooke, QC, J1K 2R1

Birds

Co-chair
Dr. Marty L. Leonard
Department of Biology
Dalhousie University
Halifax, Nova Scotia
B3H 4J1

Co-chair
Richard (Dick) Cannings
1330 East Debeck Road
RR # 1 Site 11, Comp. 96,
Naramata, BC, V0H 1N0

Lepidopterans & Molluscs

Co-chair
Dr. Theresa Fowler
(Lepidopterans)
Canadian Wildlife Service
Environment Canada
Hull, QC, J8Y 3Z5

Co-chair
Dr. Gerald L. Mackie (Molluscs)
College of Biological Sciences
University of Guelph
Guelph, ON, N1G 2W1

Marine Mammals

Co-chair
Dr. Andrew Trites
Marine Mammal Research Unit
Fisheries Centre
University of British Columbia
2204 Main Mall, Vancouver B.C.
V6T 1Z4

Co-chair
Dr. Hal Whitehead
Biology Department
Dalhousie University
Halifax, NS, B3H 4J1

Plants & Lichens

Co-chair
Dr. Erich Haber
(Vascular Plants)
National Botanical Services
604 Wavell Avenue
Ottawa, ON, K2A 3A8

Co-chair
Dr. René Belland
(Mosses & Lichens)
Devonian Botanic Garden
University of Alberta
Edmonton, AB, T6G 2E1

Marine Fishes

Co-chair (Atlantic Fishes)
Dr. Richard L. Haedrich
Department of Biology
Memorial University of
Newfoundland
4 Clark Place
St. John's, NL, A1B 5S7

Co-chair (Pacific Fishes)
Dr. Mart R. Gross
Department of Zoology
University of Toronto
25 Harbord St.
Toronto, ON, M5S 3G5

Aboriginal Traditional Knowledge

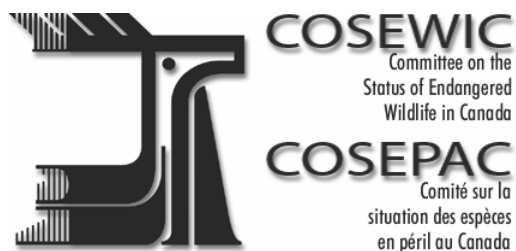
Interim Co-chair
F. Henry Lickers
Mohawk Council of Akwesasne,
Department of the Environment,
P.O. Box 579
Cornwall, ON
K6H 5T3

Second co-chair to be announced

Freshwater Fishes

Co-chair
Dr. Robert Campbell
983 route 800 E
R.R. #1
St. Albert, ON
K0A 3C0

Co-chair
Dr. Claude Renaud
Canadian Museum of Nature
P.O. Box 3443, Station D
Ottawa, ON, K1P 6P4



The Committee on the Status of Endangered Wildlife in Canada (COSEWIC) was created in 1977 as a result of a recommendation at the Federal-Provincial Wildlife Conference held in 1976.

It arose from the need for a single, official, scientifically sound, national listing of wildlife species at risk.

In 1978, COSEWIC designated its first species and produced its first list of Canadian species at risk.

Species designated at meetings of the full committee are added to the list.

In 2002, COSEWIC is celebrating 25 years of Science and Knowledge for species at risk in Canada.



Environment
Canada
Canadian Wildlife
Service

Environnement
Canada
Service canadien
de la faune

Canada

The Canadian Wildlife Service, Environment Canada, provides full administrative and financial support to the COSEWIC Secretariat.

