
Rural Secretariat

EXECUTIVE COUNCIL

ANNUAL ACTIVITY REPORT
2005 - 06



Regions and Government...Working Together

[This Page Intentionally Blank For Printing Purposes]

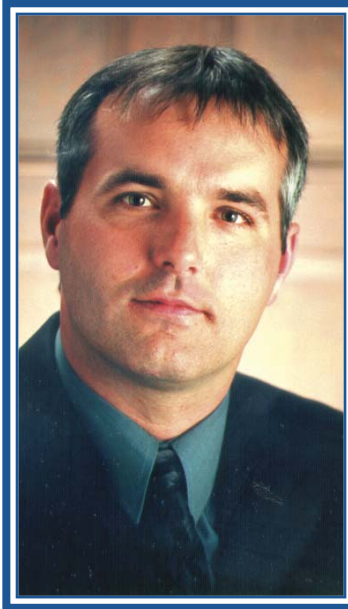
“This province is changing. Through change comes opportunity. The Rural Secretariat provides the forum where we can work together to understand the changes that are occurring and turn them into opportunities.”

- Minister Trevor Taylor (August, 2006)

Table of Contents

Message from the Minister	i
Organizational Overview	1
<i>Vision</i>	2
<i>Mandate</i>	3
<i>Lines of Business</i>	4
Shared Commitments, Highlights & Accomplishments.....	5
<i>Operational Highlights and Accomplishments</i>	5
<i>Regional and Provincial Highlights and Accomplishments</i>	6
Opportunities and Challenges Ahead.....	11
Financial Summary.....	13
Appendix A.....	15
<i>Rural Secretariat Organizational Structure</i>	15
Appendix B	17
<i>Rural Secretariat Regions - Map</i>	17
Appendix C.....	19
<i>Regional Council Membership</i>	19
Appendix D	23
<i>Mandate of the Regional Councils of the Rural Secretariat</i>	23
<i>Mandate of the Provincial Council of the Rural Secretariat</i>	23
Appendix E.....	25
<i>Provincial Council Appointments to Date</i>	25

Message from the Minister



As Minister responsible for the Rural Secretariat and in accordance with government's commitment to accountability, I hereby submit the 2005-06 Annual Activity Report of the Rural Secretariat which details the activities of the secretariat from April 1, 2005 to March 31, 2006. This annual activity report was prepared under my direction and I am accountable for its preparation. This report outlines a number of accomplishments, a few of which I will highlight here.

The secretariat began the fiscal year by concluding its open nomination process for its nine regional councils. Over 350 nominations were received, with 133 citizens being appointed to councils. It also initiated the selection process for its permanent staff complement of 16, which was finalized in September 2005.

In October 2005, a second Dialogue Day was held at Marble Mountain, Steady Brook. This was the first meeting of the regional councils. It also provided an opportunity for Cabinet and regional council members to meet. By the end of the fiscal year, each council had met at least twice more. Their first task is the development of long-term vision documents for their regions that will be submitted to government by March 31, 2007. These documents will assist in the identification of regional priorities.

As we work towards regional sustainability, collaboration and cooperation between individuals, communities and government will be vital to our success. I look forward to realizing the benefits that come from working together.

A handwritten signature in black ink, appearing to read 'T. Taylor', written in a cursive style.

TREVOR TAYLOR
Minister
MHA, The Straits and White Bay North

Organizational Overview

The Rural Secretariat focuses on the sustainable development of all regions of the province. It promotes information sharing, informed dialogue and collaboration within government and between government and communities. It facilitates horizontal thinking on regional issues and is focused on the long-term sustainability of all regions of Newfoundland and Labrador. The secretariat conducts research, develops processes and tools, and engages citizens to enhance the consideration of regional issues in public policy development.

To carry out its work, the Rural Secretariat has a permanent staff complement of 16 employees:

- Assistant Deputy Minister
- Director of Regional Partnership Development
- Director of Partnership Research and Analysis
- Manager of Partnership Administration
- 10 Regional Partnership Planners
- Policy Analyst
- Clerk Typist III



(See Appendix A for Organizational Chart)

Six of these positions are located at the Confederation Building in St. John's. The ten regional partnership planner positions are located throughout the province in each of the nine regions identified by the Rural Secretariat. Each region of the secretariat consists of larger and smaller communities that were selected based upon existing patterns of economic, social and community activity, as well as shared infrastructure.

Rural Secretariat Office Locations:

Office Location	Region
Carbonear	Avalon Peninsula
Placentia	Avalon Peninsula
Burin	Burin Peninsula
Bonavista	Clarenville-Bonavista
New-Wes-Valley	Gander – New-Wes-Valley
Springdale	Grand Falls-Windsor-Baie Verte –Harbour Breton
Stephenville	Stephenville-Port aux Basques
Corner Brook	Corner Brook-Rocky Harbour
Roddickton	St. Anthony-Port au Choix
Happy Valley-Goose Bay	Labrador

The secretariat provides management and support to the following entities in carrying out its mandate:

- **Regional Councils:** There are nine regional councils. Each council comprises men and women from larger and smaller communities within each region. Members were chosen for their backgrounds in social, business, labour, cultural and environmental development within a region and do not represent specific organizations. Councils meet four times per year. (See Appendix D for the mandate of the regional councils)
- **Provincial Council:** This council will consist of representatives from each of the regional councils and other community representatives. The provincial council will meet twice per year with Cabinet to discuss broad policy and program initiatives which will enhance the sustainable development of all regions in the province. (See Appendix D for the mandate of the provincial council)
- **Deputy Ministers' Committee on Regional Development:** Deputy Ministers will meet to develop cross sectoral and cross departmental approaches to regional and rural issues, and to ensure that policy and programs are designed to be complementary. The Clerk of the Executive Council chairs the committee. The deputy ministers' committee will meet with the provincial council at least twice per year.

Vision

The vision of the Rural Secretariat is of sustainable regions with healthy, educated prosperous people living in safe, inclusive communities.



Petit Forte

Mandate

The Rural Secretariat's mandate is to:

- Promote the well-being of all regions of Newfoundland and Labrador through a comprehensive and coordinated approach to economic, social, cultural and environmental aspects of regional development.
- Act as the focal point for government to work with local and regional partners to build strong and dynamic regions and communities.
- Ensure that regional concerns are considered throughout the provincial government and promoted at the federal level.
- Carry out research and analysis of economic and social issues affecting all regions of Newfoundland and Labrador.
- Help communities and regions identify and take advantage of growth opportunities.



Duck Pond

A copper and zinc mine near Millertown in central Newfoundland

Lines of Business

The Rural Secretariat has two primary areas of focus:

Partnership Development: The Rural Secretariat engages citizens and coordinates the development of partnerships to focus on sustainable regional development and provide direct consideration of regional issues in the development of public policy.

Regional Impact Awareness and Action: The Rural Secretariat conducts research and analysis, and provides informed advice on opportunities and challenges in all regions of Newfoundland and Labrador.



Bay Roberts

Shore Line Walk

Shared Commitments, Highlights & Accomplishments

The Rural Secretariat is pleased to report on its accomplishments over the past fiscal year. The foundation of the Rural Secretariat rests on sharing responsibility and working collaboratively within government, within regions and between government and citizens. It accomplishes this work through participation in a variety of initiatives within government and throughout regions.

Operational Highlights and Accomplishments

Permanent Staff Complement

In summer 2005, the secretariat advertised and completed the selection process for its permanent staff complement. This resulted in the permanent appointment of a director of regional partnership development, a director of partnership research and analysis, a manager of partnership administration, a policy analyst, a clerk typist III and 10 regional partnership planners. Competitions for the regional partnership planner positions were held in 10 locations throughout the province.

Regional Offices

In summer 2005, 10 regional offices were established for each of the regional partnership planners. These offices are located in smaller and larger communities (see page 1 for office locations).

Staff Development

The Rural Secretariat, working jointly with the College of the North Atlantic, developed a comprehensive orientation for staff of the secretariat. The orientation was part of an ongoing learning and development process. In September 2005, staff of the secretariat participated in the first phase of this process. They completed a three day workshop that introduced staff to government decision-making processes, human resource policies and general administrative functions of their positions. During the week-long phase of the orientation, staff explored issues in economic, social, cultural and environmental areas of development. These learning and development opportunities, as well as others, took place throughout the province, including L'Anse-Au-Clair, Cow Head, Steady Brook and St. John's, and focused on regional development, change leadership, policy development and long-term visioning.

Transparency and Accountability

In August 2005, in accordance with the Transparency and Accountability Act, the secretariat began the development of an Activity Plan for 2006-08. This planning process identified the goals and objectives the secretariat will achieve over the next two fiscal years.

Regional and Provincial Highlights and Accomplishments

Citizen Engagement



In April 2005, the secretariat concluded its public call for nominations to its nine regional councils. Over 350 nominations were received. In August 2005, 133 of the nominees were selected based on their backgrounds in economic, social, cultural and environmental sectors and appointed to the councils. Age and gender balance were also considered, as well as a balance in representation from larger and smaller communities. A regional partnership planner works with each

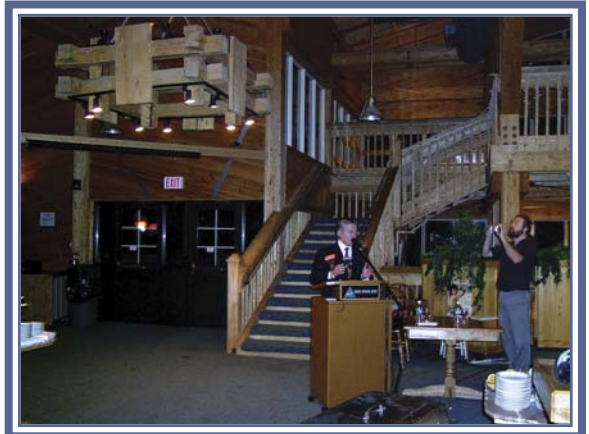
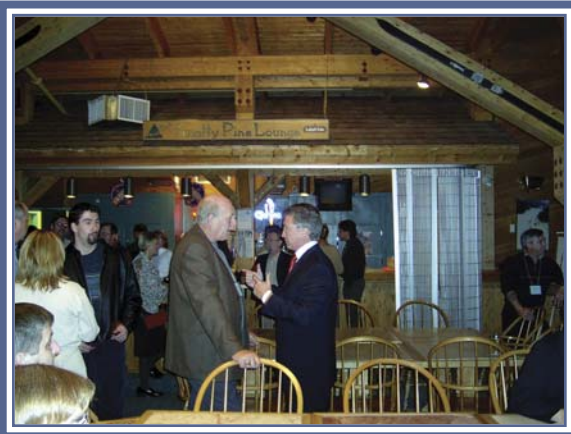
regional council to facilitate discussions. Planners also act as an information resource for councils, drawing from their respective backgrounds and the knowledge gained as part of an intensive and ongoing development process.

Each council met at least twice during the remainder of the fiscal year. During this time, planners provided councils with information on the economic, demographic and social challenges and opportunities of each region. The councils began the discussion of challenges and key directions that will be presented to Cabinet by fall 2006. This will form the basis of discussion documents for future planning to be shared with other community stakeholders in winter 2007.

During this fiscal year some appointments were also made to the provincial council (see Appendix E for a list of appointments to date).

Dialogue Day 2005

In October 2005, the secretariat held its second Dialogue Day at Marble Mountain, Steady Book. Attendees included regional council members, caucus, deputy ministers



D
i
a
l
o
g
u
e

D
a
y

2
0
0
5

and the Chair of the Provincial Council of the Rural Secretariat. This Dialogue Day provided an opportunity to hold a meeting between Cabinet and regional council members. It also served as the first meeting of the regional councils and included an orientation to their roles and responsibilities. Regional councils were also introduced to regional specific data on demographics, education, labour market participation, etc.

Presentations, Meetings and Media Inquiries

During the fiscal year, the secretariat presented information on the economic, demographic and social challenges and opportunities of the province to a number of provincial groups including government caucus, deputy ministers, Executive of the Fish, Food and Allied Workers, Community Services Council, Newfoundland and Labrador Regional Economic Development Association, the Management Committee of the Labour Market Development Agreement, Labour Market Sub-Committee of the Strategic Partnership Initiative, a number of provincial government departments, the Newfoundland and Labrador Youth Advisory Committee, and the Leslie Harris Centre of Regional Policy and Development. Staff of the secretariat also participated in an interview series on CBC Radio and responded to general media inquiries in regions.

Each regional partnership planner was also actively sharing information within their regions during the fiscal year. Between October 2005 and March 2006, the planners gave over 35 presentations to almost 800 people from groups that included regional economic development boards, town councils, College of the North Atlantic, health authorities, school boards and a variety of voluntary based community groups. They also attended over 140 public meetings, government committee meetings, public consultation sessions and community events to bring the perspective of the Rural Secretariat.

Deputy Ministers' Committee

In February and March 2006, the first meetings of the Deputy Ministers' Committee were held. The first meeting was an orientation to the roles and responsibilities of the committee. The committee was presented with the same information that was provided to both regional council members and caucus on the economic, demographic and social challenges and opportunities facing the province. Deputy ministers commenced a discussion of this information during their second meeting.

Research and Related Activity

Over the past year, the Rural Secretariat has been developing tools and information to enhance the consideration of rural issues in policy, program and service decisions. Part of this process has been promoting the use of evidence in decision-making and communicating the importance of long-term thinking.

Specific initiatives include:

Rural Lens

The secretariat continued work on the development of a rural lens. The rural lens is intended to be a broadbased tool that will enable all government departments and agencies to utilize a consistent, formalized approach to the assessment of rural impacts in the development of policies, programs and services. It will consist of a series of questions that clarify the policy objective, explore direct and indirect impacts, as well as explore implementation and communication considerations. It is anticipated that the lens will be formally introduced during fiscal year 2006-07.

Community Linkages Survey

The Rural Secretariat, in partnership with Newfoundland and Labrador Statistics Agency and College of the North Atlantic commenced the development of a Community Linkages Survey (CLS). The CLS is designed to fill major data gaps required to properly target regional and rural policy and program initiatives. It will be a household-based survey that will seek to identify linkages between and among larger and smaller communities. For example, it will seek to determine where people live versus where they work, purchase goods and services, and access public services. It will also ask how these linkages may change over the next five years. It is intended that the survey will be finalized and completed during the 2006-07 fiscal year.

Community Accounts Committee

In partnership with the Newfoundland and Labrador Statistics Agency and the Leslie Harris Centre of Regional Policy and Development (Memorial University of Newfoundland), this project is designed to promote use of the Community Accounts (www.communityaccounts.ca), to enhance its ease-of-use, and to identify information and knowledge gaps. The project supports government's commitment to sharing information and promoting the use of evidence in decision-making. The project commenced in 2005-06 and will continue through 2006-07.

University Linkages

The Rural Secretariat has been promoting stronger linkages with the Harris Centre, Memorial University of Newfoundland (MUN), particularly with regard to the dissemination of university research to regional stakeholders. The secretariat is participating in two related projects; *Memorial University Regional Inventory (MURI)* and *Mobilizing Knowledge for Sustainable Regions in Newfoundland and Labrador*.

The Rural Secretariat is a member of the steering committee for the Memorial University Regional Inventory (MURI) project. MURI will be an internet-based database modeled after Community Accounts. It will collect, record and monitor regional research-related activities that have been completed, are ongoing or will be undertaken by MUN. The long-term goal is to enhance regional development by facilitating linkages between

researchers and economic development agencies, communities and other stakeholders.

The Rural Secretariat will play an active role in the *Mobilizing Knowledge for Sustainable Regions in Newfoundland and Labrador* project. Through its regional staff and citizen-based regional councils, the secretariat will assist with the identification of research needs in regions. This initiative will identify research that has been completed at MUN which can benefit regional policy and development. It will also enable research needs and gaps to be identified at the local level which can be forwarded to MUN for follow up and action. This information will be available through MURI.

Partnership with College of the North Atlantic

The Rural Secretariat, in partnership with the College of the North Atlantic, designed and delivered staff workshops, training sessions and a Dialogue Day for staff, councils and community partners related to sustainable regional development. The two organizations also partnered on the implementation of the Community Linkages Survey (CLS).

(see page 9 for more information on the CLS)

Interdepartmental Initiatives

The Rural Secretariat participated in a number of interdepartmental initiatives which will impact on rural areas. Some examples of these initiatives include:

Policy Initiatives

- Labour Market Development – Lead agent: Human Resources, Labour and Employment
- Poverty Strategy - Lead agent: Human Resources, Labour and Employment
- Crime Prevention Strategy – Lead agents: Public Safety and Emergency Preparedness Canada and Newfoundland and Labrador Statistics Agency
- Labrador Transportation Strategy – Lead agent: Transportation and Works
- Strategic Partnership Initiative, Investment Capital Sub-Committee – Lead agent: Innovation, Trade and Rural Development
- Integrated Hub Model and Bridging the Gap – Lead agent: Federal Rural Secretariat

Program and Project Initiatives

- Violence Prevention Initiative - Lead agent: Women's Policy Office
- Literacy Initiative – Lead agent: Education
- Government Broadband Initiative – Lead agent: Innovation, Trade and Rural Development

Opportunities and Challenges Ahead

Vision Development

The development of regional and provincial visions will provide both a challenge and an opportunity. The provincial and regional councils will be challenged with reaching consensus and articulating what they think their regions and province will look like in 15 to 20 years based on current evidence, and then identifying the priority areas that will be required to achieve the visions. This will also provide an opportunity for councils and citizens to have a voice in shaping the future of their regions and their province.



—Harpoon River, Central—

Citizen engagement

The regional and provincial councils are two mechanisms through which the Rural Secretariat is engaging citizens in a long-term discussion about the future. These processes will provide opportunities to learn from each other and to build a greater understanding about the economic, social, cultural and environmental realities in the province. These mechanisms, including a broader citizen engagement process, will provide an opportunity for citizens to better understand the role of government and the challenges it faces and for government to learn from the experiences of living and working in all regions of the province.

The challenge will be for government and citizens to build a trust relationship and to retain a focus on the long-term amidst ongoing, immediate challenges.

Thinking Regionally and Working Together

The Rural Secretariat is challenging communities within regions to think “regionally”. Each community benefits when surrounding communities are doing well. Benefits include shared and effective services, employment opportunities, increased economic activity and access to private and public sector goods and services. By working together within regions and thinking regionally, communities can reap benefits from opportunities that would not otherwise be possible.

Financial Summary

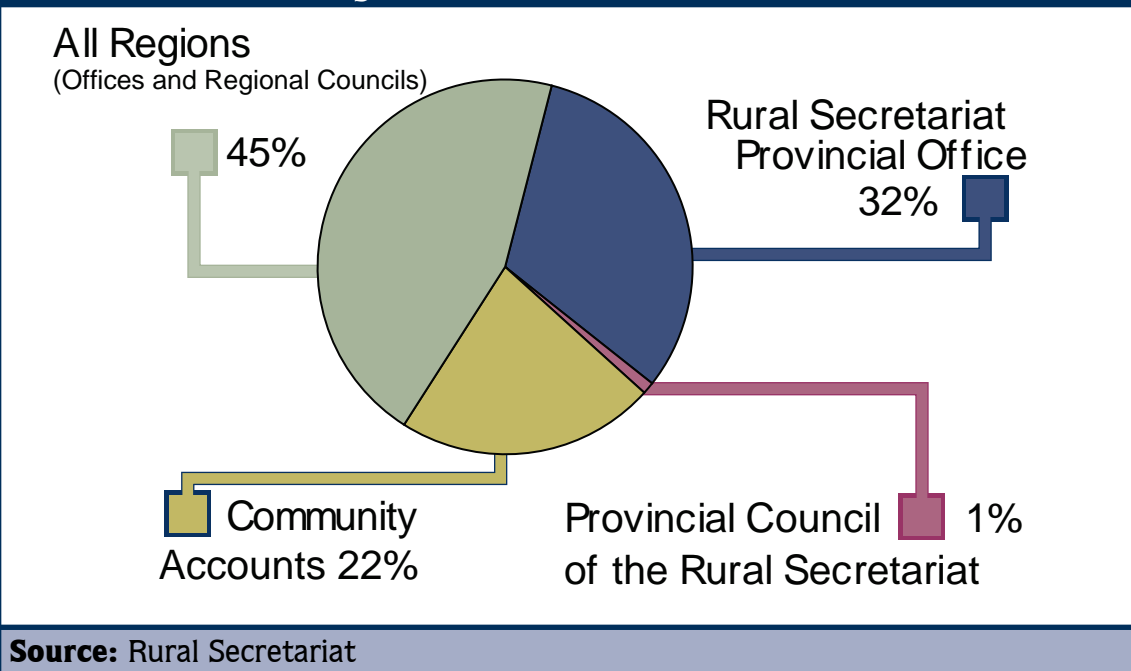
The Rural Secretariat budget includes funding to support the staff of the secretariat, the maintenance of Community Accounts and travel for provincial and regional council members.

Fiscal Year 2005-06 (Unaudited)

	Actual Expenditures	Estimates Amended	Estimates Original
Salaries	1,044,342	1,064,900	1,320,000
Employee Benefits	1,815	3,300	1,500
Transportation & Communications	165,221	246,000	250,000
Supplies.....	43,289	45,000	43,000
Professional Services	27,200	28,500	10,000
Purchased Services	92,528	95,300	54,000
Property, Furnishings & Equipment....	15,760	17,000	12,500
Grants & Subsidies	200,000	200,000	9,000
TOTAL	1,590,155	1,700,000	1,700,000

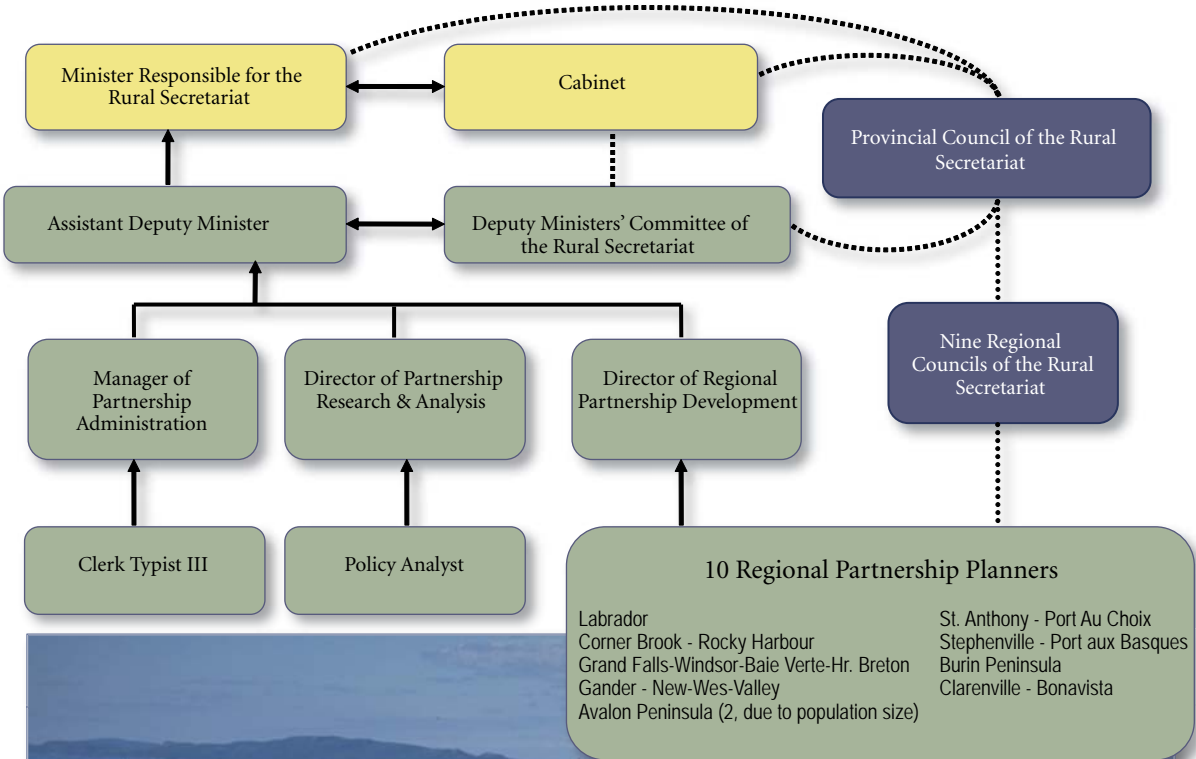
Expenditures and revenue figures included in the table above are based on public information provided in the Report on the Program Expenditures and Revenues of the Consolidated Revenue Fund for Fiscal Year Ended 31 March 2006.

Rural Secretariat Budget 2005-06



Appendix A

Rural Secretariat Organizational Structure

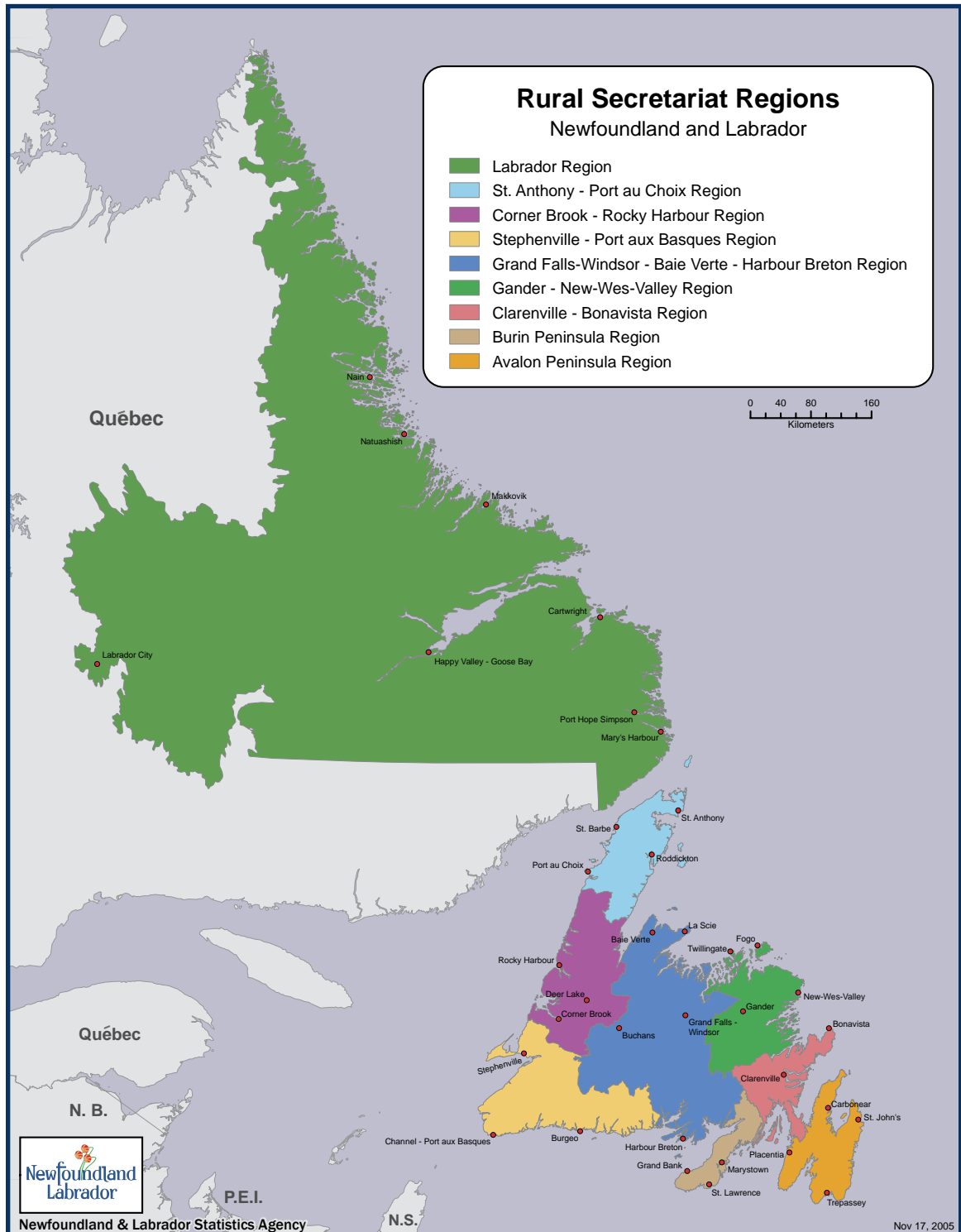


Western Labrador

Outside Wabush and Labrador City

Appendix B

Rural Secretariat Regions - Map



FY 2005-06

Appendix C

Regional Council Membership

The following lists include the names of the 133 members originally appointed to nine Rural Secretariat Regional Councils. For an updated list please visit www.exec.gov.nl.ca/rural/regionalcouncil.asp

Avalon Peninsula

Regional Partnership Planners - *Jamilee Fitzpatrick (Placentia) & Ken Carter (Carbonear)*

Chair: Kerry Murray (Conception Bay South)

Appointed Regional Council:

Patricia Puddester (Bay Bulls)
Paul Connors (Bell Island & CBS)
Jay McGrath (Branch)
Maureen Sullivan (Calvert)
Betty Moore (Clarke's Beach)
Rhonda Duggan (Grate's Cove)
John C Adams (Harbour Grace)
Bride Power (Marysvale)
Lesley Snelgrove (Mount Pearl)
Marilyn Tucker (Paradise)
Des Linehan (Placentia)
Sheila Lee (Riverhead)
Don G. Case (Salmon Cove)
Dale Jarvis (St. John's)
Anne Manuel (St. John's)
Bruce Pearce (St. John's)
Viola Pennell (Trepassey)

Burin Peninsula

Regional Partnership Planner - *Greg Dominaux, (Burin)*

Chair: Dr. Michael Graham (Burin)

Appointed Regional Council:

Gordon Piercey (Burin Bay Arm)
Trina Appleby (Burin)
Charles Wiscombe (Creston South)
Brian K. Rose (Fortune)
Corey Parsons (Fortune)
Trevor Bungay (Marystown)
Mary McCarthy (Marystown)
Jeff Pittman (Marystown)
Harold Murphy (Parker's Cove)
Pam Ghent (Harbour Mille)
Irene Hurley (Spanish Room)
Isabel Norman (Rushoon)
Samuel Tobin (St. Lawrence)

Clarenville – Bonavista

Regional Partnership Planner - *Colin Holloway*
(*Bonavista*)

Chair: Violet Parsons (Bloomfield)

Appointed Regional Council:

Fay Matthews (Arnold's Cove)
Bill Abbott (Bonavista)
Don Mifflin (Bonavista)
Leo Bonnell (Clarenville)
Lisa Browne (Clarenville)
Paul Tilley (Clarenville)
Marilyn Coles-Hayley (Elliston)
Merv Wiseman (North Harbour)
Barry Pearce (Port Rexton)
Darryl Johnson (Port Union)
Maria Moran (St. Jones Within)
Shelly Blackmore (Trinity Bay North)
Edith Samson (Trinity Bay North)

Gander – New-Wes-Valley

Regional Partnership Planner - *Tanya Noble*
(*New-Wes-Valley*)

Chair: Edythe Goodridge (Salvage)

Appointed Regional Council:

Derm Flynn (Appleton)
Victor Cassell (Cottlesville)
Tony R. Keats (Dover)
Melanie Callahan (Gambo)
Michael Harkaway (Gander)
Gail Hoyles (Gander)
Ross Robert Trimm (Gander Bay North)
Steven Perry (New-Wes-Valley)
Douglas Churchill (Glovertown)
Nadine Decker (Joe Batt's Arm)
James Snow (Lewisperste)
Wanda Loder (Pike's Arm)
David Regular (Summerford)
Ruby Ellis (Wesleyville)

Grand Falls-Windsor – Baie Verte – Harbour Breton

Regional Partnership Planner - *Linda Brett*
(*Springdale*)

Chair: Deborah Armstrong (Grand Falls-Windsor)

Appointed Regional Council:

Charlie Ennis (Baie Verte)
Steward May (Belleoram)
Joe McGrath (Bishop's Falls)
Jerry Dean (Botwood)
Hubert Langdon (English Hr. West)
Karen Beresford (Grand Falls-Windsor)
Don Stewart (Hr Breton)
David Hayashida (King's Point)
John Price (La Scie)
Sheena Ward (Leading Tickles)
Bernice Walker (Norris Arm)
Kevin Pollard (Springdale)
Tracey Perry (St. Alban's)
Joan Strickland (St. Alban's)
Danny Huxter (Springdale)

Stephenville – Port aux Basques

Regional Partnership Planner - *Sam Organ*
(*Stephenville*)

Chair: Robin Davis (Stephenville Crossing)

Appointed Regional Council:

Allister Hann (Burgeo)
Eric Legge (Cartyville)
Kelly Tompkins (Codroy Valley)
Audry Gracie (Kippens)
Melinda Oliver-Moraze (La Grand'Terre)
Margaret Gaudon (Port au Port)
Jamie Warren (Port aux Basques)
Ruth Forsey-Gale (Robinson's)
Adeline Gale (St. Andrews)
Michelle Skinner (St. Georges)
Calvin White (St. Georges)
Susan Fowlow (Stephenville)
Laura E Wareham (Stephenville)

Corner Brook – Rocky Harbour

Regional Partnership Planner - *Doris Hancock*
(Corner Brook)

Co-Chairs: Don Downer (Corner Brook)
Colleen Kennedy (Rocky Harbour)

Appointed Regional Council:

Bertha Brophy (Daniel's Harbour)
Gina Caines (Corner Brook)
Juanita Brake (Corner Brook)
Carla Wells (Corner Brook)
Philip Hicks (Corner Brook)
Cyril Kirby (Deer Lake)
Geraldine Hewitt (Jackson's Arm)
Joan Cranston (Norris Point)
Roger Keough (Parson's Pond)
Colleen Kennedy-Costello (Pasadena)
Darrell House (Cowhead)

St. Anthony - Port au Choix

Regional Partnership Planner - (Acting) *Dana Pittman* (Roddickton)

Chair: Richard May (Plum Point)

Appointed Regional Council:

Linda Randell (Bide Arm)
Ted Lewis (Croque)
Hubert Randell (Englee)
Cornelius C. Hoddinott (Hawke's Bay)
Beverly May (Lower Cove)
Barbara Genge (Main Brook)
Gloria Toope (Plum Point)
Vachon Noel (Port Au Choix)
Donald Tulk (Port Saunders)
Ross Decker (Roddickton)
Raymond Norman (Roddickton)
Marshall Dean (St. Anthony)
Michael Moss (St. Anthony)
John Simmonds (St. Anthony)
*Permanent incumbent (*Nina Mitchelmore*) to return August 2006.

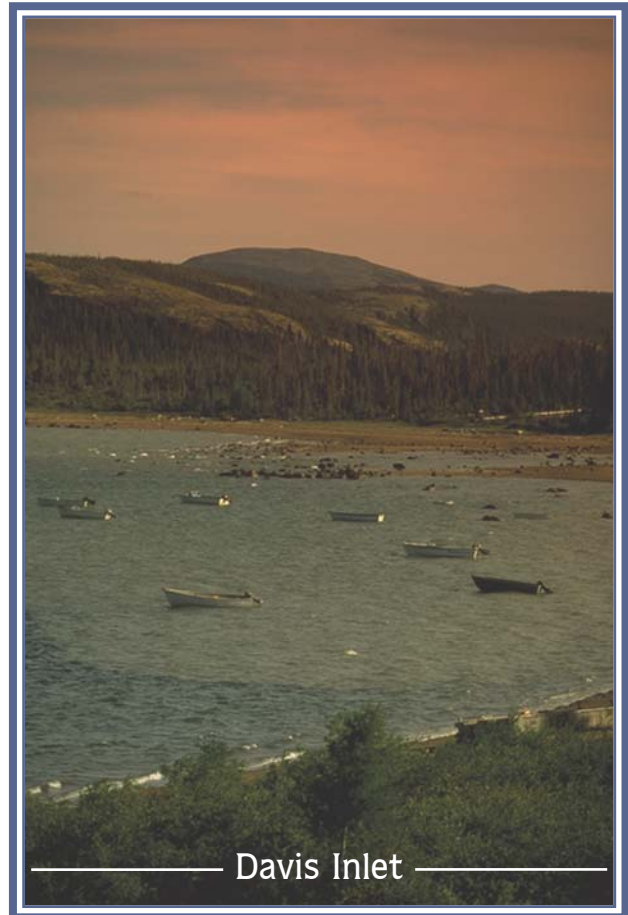
Labrador Region

Regional Partnership Planner - *Lisa Densmore*
(Happy Valley-Goose Bay)

Chair: Sonya Belben (Forteau)

Appointed Regional Council:

Randy Earle (L'Anse-Au-Loup)
Dennis Peck (Happy Valley - Goose Bay)
Jenni Campbell (Happy Valley-Goose Bay)
Jonathan Jesseau (Happy Valley-Goose Bay)
Wayne Broomfield (Happy Valley-Goose Bay)
Diane Gear (Labrador City)
Patsy Ralph (Labrador City)
Lori O'Brien (L'Anse Au Loup)
Isabella Pain (Nain)
Wayne Jenkins (Nain)
Leander Baikie (North West River)
James Farrell (Wabush)
Margaret Burden (Port Hope Simpson)



Mandate of the Regional Councils of the Rural Secretariat

- To develop a common, evidence-based understanding of the social, economic, environmental and cultural realities of a region.
- To review key regional economic and social measures (e.g. education levels, demographic trends, health status, income levels, EI usage, economic diversity) and to reach agreement on the priorities for change over the next five years.
- To identify policies and programs which either advance, negatively impact or need to be developed to encourage the necessary change.
- To advance regional cooperation through the sharing of information on and discussion about economic and social measures and to encourage regional partners to take action on and be accountable for those areas within their mandates.
- To nominate an individual to represent the region on the Provincial Council of the Rural Secretariat.

Mandate of the Provincial Council of the Rural Secretariat

- To develop a common, evidence-based understanding of the social, economic, environmental and cultural realities facing the province.
- To review key provincial, economic and social measures (e.g. education levels, demographic trends, health status, income levels, EI usage, economic diversity) and to reach agreement on the priorities for change over the next five years.
- To identify and advise government on policies and programs which either advance, negatively impact or need to be developed to encourage the necessary change.
- To advance cooperation through the sharing of information on and discussion about economic and social measures, and to encourage government and community partners to take action on and be accountable for those areas within their mandates.
- To meet twice annually with the provincial Cabinet and deputy ministers to advance regional development priorities.
- To serve as an external sounding board for government for the development of strategies, policies, programs and budget issues that will affect provincial and regional sustainability.

Appendix E

Provincial Council Appointments to Date

Chair of the Provincial Council: Ms. Sheila Kelly-Blackmore, Sandy Cove

Region	Representative	Alternate
Avalon Peninsula	Mr. Kerry Murray Conception Bay South	Ms. Viola Pennell Trepassey
Burin Peninsula	Ms. Pamela Ghent Harbour Mille	Mr. Corey Parsons Fortune
Clarenville-Bonavista	Mr. Mervin Wiseman North Harbour	Ms. Marilyn Coles-Hayley Elliston
Gander – New-Wes-Valley	Ms. Gail Hoyles Gander	Mr. Tony Keats Dover
Grand Falls-Windsor, Baie Verte, Harbour Breton	Mr. Danny Huxter Springdale	Ms. Tracey Perry St. Albans
Stephenville – Port Aux Basques	Ms. Michelle Skinner St. George's	Mr. Kelly Thompkins Codroy Valley
Corner Brook - Rocky Harbour	Ms. Colleen Kennedy Rocky Harbour	Mr. Don Downer Corner Brook
St. Anthony – Port au Choix	Mr. Ted Lewis Croque	Ms. Gloria Toope Plum Point
Labrador	Ms. Diane Gear Labrador City	Mr. James Farrell Wabush
Provincial Representative	Ms. Penelope Rowe St. John's	N/A
Provincial Representative	Ms. Donna Butt Trinity	N/A

Photo Credits:

Thank-you to all who provided us with photos for our use. We look forward to posting your images on our website and in future publications.

Photos in this document have been provided by:



Cover
Ronalda Steele



Page 1
Department of
Tourism, Culture and
Recreation



Page 2
Bruce Peckford



Page 3
Aur Resources Inc.



Page 4
Mary Snow



Page 6
Greg Dominaux



Page 11
Linda Brett



Page 15
Department of
Tourism, Culture and
Recreation

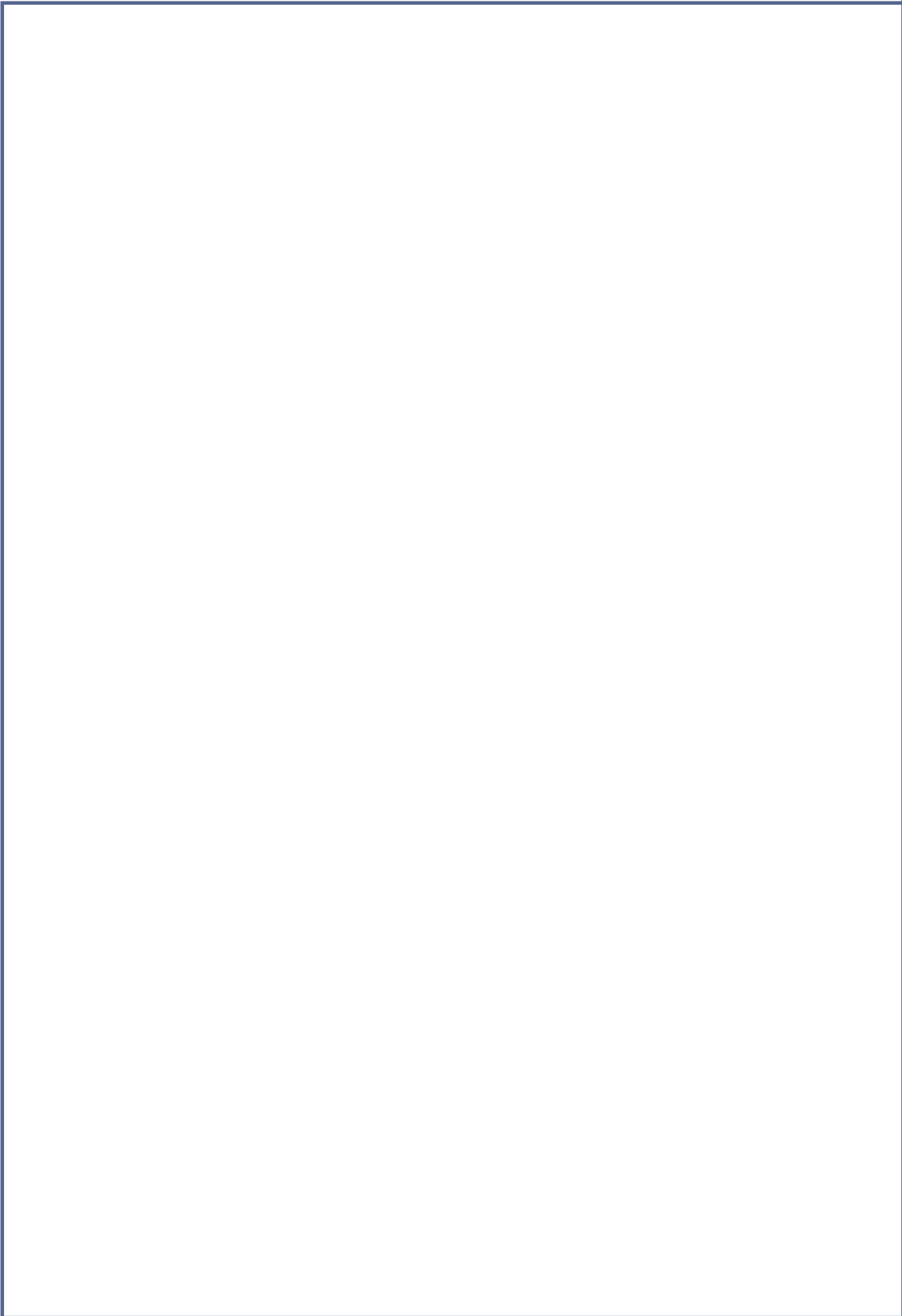


Page 21
Department of
Tourism, Culture and
Recreation
(Photographers:
Barrett and MacKay)

Other Photos	Page
Group Photo	1
Session Photo.....	6
Dialogue Day Photos.....	7
Provided By: Rural Secretariat	

If you have pictures of your region (scenic, public events, etc.) and would like to share them, or if you have any inquiries about the photos used in this document please contact us by email:

ruralinfo@gov.nl.ca or call our office (709) 729-0168.



[This Page Intentionally Blank For Printing Purposes]

[This Page Intentionally Blank For Printing Purposes]

[This Page Intentionally Blank For Printing Purposes]



**Rural Secretariat
Executive Council
P.O. Box 8700
St. John's, NL
A1B 4J6**

**Tel: (709) 729-0168
Fax: (709) 729-1673
E-mail: ruralinfo@gov.nl.ca**

www.gov.nl.ca/rural