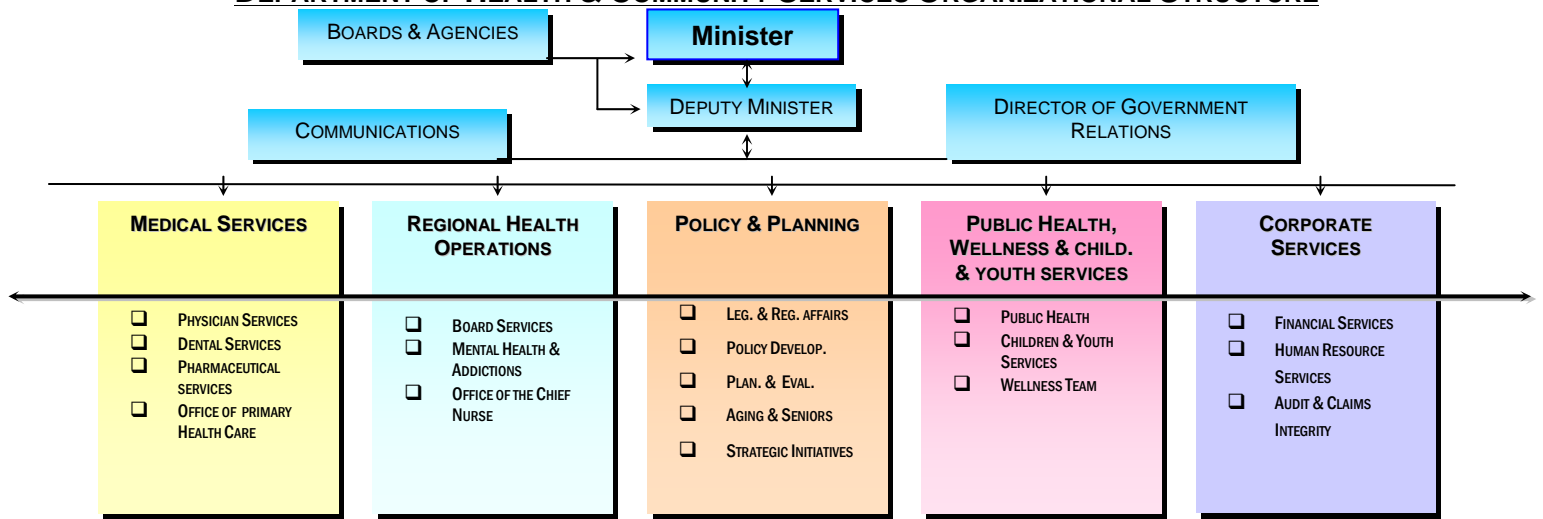


DEPARTMENT OF HEALTH & COMMUNITY SERVICES ORGANIZATIONAL STRUCTURE



MINISTER'S OFFICE	
Minister	Tom Osborne 3124
Secretary to the Minister	Angela Bull 3124
Executive Assistant to Minister	Jonathan Galgay 2074
Political Assistant	Susan Elliott 4882
Policy Analyst	Darrell Hynes 5961
Administrative Assistant	Jackie MacNab 4718
Parliamentary Secretary	Ross Wiseman 5566
Political Assistant	Debbie Robbins 1714
DEPUTY MINISTER'S OFFICE	
Deputy Minister	John Abbott 3125
Secretary	Elizabeth Donahue 3125
Communications	
Director of Communications	Tansy Mundon 1377
Communications Specialist	Tara Furlong 2888
Administrative Assistant	Mary St. Croix 2667
Government Relations	
Director	Rosemary Boyd 1775
Administrative Assistant	Carol Crumme 3110
Senior Intergovernmental Relations Officer	Kathy Babstock 3533
Government Relations Analyst	Vacant 3110

MEDICAL SERVICES BRANCH	
Medical Consultant	Dr. Edgar Hunt 3157
Administrative Assistant	Beverley Power 3157
Economist	Mike Doyle 0338
Director, Physician Services	Dr. Cathi Bradbury 3508
Administrative Assistant	Mabel Martin 3508
Asst. Director, Physician Services	
Administrative Assistant	Dr. Blair Fleming 758-1501
Statistician/Analyst	Marie Heath 758-1557
Program Planning Officer	Coleen Owens 3698
Health Services Facilitator	John-Paul Gordon 4029
	Brian Kenny 4711
Director, Dental Services	Vacant 758-1503
Primary Health Care Office	
Team Leader	Juanita Barrett 758-1548
Administrative Assistant	Dana Ryan 4245
Policy Analyst	Diane Kieley 7443
Primary Health Care Consultant	Leslie Hickey 4453
Medical Advisor	Conleth O'Maonaigh 7445
Research Assistant	Vacant 7922
Building a Better Tomorrow	
Project Manager	Brenda Hancock 0030
Selfcare/Telecare	Joy Stuckless 4926
Multi-jurisdictional Facilitation Project	
Facilitation Coordinator	Heather White 0390
Primary Health Care Consultant	John Downton 0541
Chronic Disease Management	Heather Rumsey 4965
Word Processing Equipment	
Operator I	Rose Phillips 1655
Word Processing Equipment	
Operator I	Michelle Hickey 5154
Pharmaceutical Services	
Director	Colleen Janes 6507
Manager of Pharmaceutical Services	Patricia Clark 6507
Project Manager	Colleen Stockley 2344
Clerk IV	Jean Tremblett 6507
Senior Pharmacist	Colleen Ryan 6507
Pharmacist	Vacant 6507
Pharmacist	Kelly Kavanagh 6507
Pharmacist	Brenda Wild 6507
Pharmacist	Carol Hipditch 6507
Pharmacist	Andrea Woodland 6507
Program Coordinator	Marguerite Mullins 6507
Clerk IV	Pauline Kavanagh 6507
Clerk IV	Diane Pippy 6507
Clerk Typist III	Michelle Noseworthy 6507

REGIONAL HEALTH OPERATIONS BRANCH	
Assistant Deputy Minister	Moira Hennessey 3127
Secretary	Mary Crotty 5265
Board Services	
Director	John Rumboldt 3105
Clerk IV	Connie Fry 3105
Health Care Consultant	Beverley Griffiths 0717
Health Care Consultant	Allan Corbett 2436
Health Care Consultant	Debbie Morris 7686
Health Care Consultant	Derek Penney 7681
Board Services Analyst	Janet Reid 3428
Administrative Assistant	Ann Marie Furey 2379
Engineering Consultant	Ed Sexton 2079
Emergency Health Services	
Analyst	Karen Nolan 1531
Clerk IV	Debbie Humphries 3120
Disabilities Consultant	Una Tucker 5143
Mental Health & Addictions	
Director	Debbie Sue Martin 3658
Administrative Assistant	Barbara Jackman 3658
Addictions Consultant	Renee Ryan 1335
Mental Health Consultant	Sharon Barnes 7740
Office of the Chief Nurse	
Chief Nurse	Anita Ludlow 2039
Program Manager, Blood Coordinator	Marilyn Collins 5246
Provincial Kidney Program Coordinator	Cheryl Harding 2788

POLICY & PLANNING BRANCH	
Assistant Deputy Minister	Joy Maddigan 3103
Secretary	Pamela Bennett 3103
Legislative & Regulatory Affairs	
Director	Reginald Coates 3421
Administrative Assistant	Mary Cooper 3745
Legislative Consultant	Karen Stone 1603
Legislative Analyst	Danny Barrett 6251
Policy Development	
Director	Wanda Legge 5249
Administrative Assistant	Elaine Power 3657
Health Policy Analyst	Seamus Breen 6372
Health Policy Analyst	Angie Batstone 3756
Librarian	Heather Roberts 2264
Planning & Evaluation	
Director	Vacant 3940
Clerk Typist III	Cindy Tucker 3940
Word Processing Equipment	
Operator I	Patricia Bradley 6243
Strategic Planning Consultant	Rosalind Squires 6407
Manager, Health Human Resource Planning	Andrew Wells 1890
Policy Planning & Research Analyst	Elaine Cleary 0624
Aging & Seniors	
Director	Suzanne Brake 4957
Administrative Assistant	Sharon Day 4856
Aging & Seniors Consultant	Helene Davis 4906
Aging & Seniors Analyst	Keith Dyer 5303

PUBLIC HEALTH, WELLNESS & CHILDREN & YOUTH SERVICES BRANCH	
Assistant Deputy Minister	Lynn Vivian Book 1574
Secretary	Deanne Hunt 5864
Public Health Division	
Chief Medical Officer of Health	Dr. Faith Stratton 3430
Administrative Assistant	Juanita Follett 3430
Director of Environmental Public Health	Darryl Johnson 3422
Environmental Health Specialist	Vacant 1607
Disease Control Nursing Specialist	Catherine O'Keefe 5019
Clerk IV	Neil Butland 777-6391
Director of Health Emergency Management	Dennis Davis 3912
Public Health Labs	Dr. Sam Ratnam 777-7235
Director - Children & Youth Services	Ivy Burt 6721
Administrative Assistant	Donna Bursey 2668
Program Consultant, Prenatal & Early Child Development	Catherine Royle 3280
Manager of Child Care	Helen Sinclair 4055
Child Care Consultant	Christine McLean 2093
Child Care Consultant	Andrea Kelland 3959
Manager of Child Youth & Family Services	Susan Walsh 6078
Program Consultant Caregiver & Adoptions	Ethel Dempsey 5134
Clerk IV	Pauline Cook 5359
Program & Policy Development Specialist	Michelle Shallow 3133
Clerk IV	Elaine Tucker 4173
Project Manager - NCB/ECD	Rosalind Smyth 0281
Administrative Assistant	Dolores Power 2959
Consultant Intervention Services	Paula Hennessey 3550
Program Consultant - Family Resource Centres	Deborah Randell 5554
Manager of Youth Corrections	Paul Ludlow 2794
Administrative Assistant	Justin Hann 2094
Social Work Program Coordinator	Robine James 5164
Senior Program & Policy Development Specialist	Herb Maddick 2646
Health Promotion & Wellness	
Director	Eleanor Swanson 3940
Administrative Assistant	Cindy Tucker 3940
Health Promotion Consultant	Carol Ann MacDonald 3939
Health Promotion Consultant	Linda Carter 0719
Health Promotion Consultant	Doug Howse 1374
Health Promotion Consultant	Bernie Squires 1374
Nutrition Consultant	Glendora Boland 6013

CORPORATE SERVICES BRANCH	
Assistant Deputy Minister	James Strong 0620
Secretary	Yvonne Power 0620
Financial Services	
Director (Acting)	Karen Legge 5287
Administrative Assistant	Pam Noftall 6870
Secretary	Vacant 3451
Manager, Accounting Services	Barry Stanley 2304
Accountant	Pam Thornhill 7956
Budget Analyst	Sharon Maher 5248
Accountant	Vacant 5306
Accountant	Loretta McLoughlin 2199
Clerk III	Jeff Perry 6881
Accounting Clerk	Wanda Dunphy 3137
Accounting Clerk	Pauline Crawford 2319
Accounting Clerk	Vacant 3107
Manager, Financial Information (Acting)	Nathasa Kennedy 3446
Management Analyst	Dave Adey 5278
Management Analyst	Colleen Stack 6492
Accounting Clerk	Vacant 7460
Board Financial Services	
Budget Officer	
Budget Officer	Donald Furlong 5297
Budget Officer	Charlene McCarthy 5236
Organizational Budget Analyst	Jeannie Evans 5939
Administrative Officer	Jack Antle 2694
Financial Manager	Pam Barnes 5323

Manager, Program Support Centre	Tom Parker 0238
Press Operator	Joe Melay 4887
Press Operator	Jason Norris 0607
Graphic Artist	Marion Haines 0413
Information Manager	Greta Valvasori 1596
Records Centre	
Clerk IV	Earl Patey 3156
Clerk III	Vacant 4849
Clerk III	Vacant 5316
Clerk II	Edwin Richards 4853
Clerk IV (Trim)	Bun Power 7969
Office Management Services	
Office Manager	Richard Hayes 4083
Clerk III	Mike Tizzard 7694
Administrative Assistant	Sherry Evans 6795
Front Desk Receptionist	Jacqueline Vickers 5021
Strategic Human Resources Management	
Director	Glenn Saunders 5750
Administrative Assistant	Judy Powell 5750
Manager, Human Resources	Vacant 6288
Clerk Typist III	Joy Colbert 3067
Administrative Officer	Wanda Mugeridge 5317
Manager of Training Services	Gail Hickey 0632
Dept. Programme Coordinator	Pat Cadigan 2287
Manager, Human Resources	Keith Durdle 3047
Audit & Claims Integrity	
Executive Director	Tony Maher 758-1599
Administrative Assistant	Paulette Gillis 758-1506
Manager, Claiming Services	Gordon Nash 5313
Accountant	John Edwards 3054
Accountant	David Griffiths 5307
Clerk IV	Linda Dyer 5572
Manager, Insured Services	Marlene Wall 3108
Clerk IV	Vacant 4928
Clerk IV	Carrie Bishop 5222
Clerk IV	Valerie Humby 3996
Clerk IV	Francina Sweetapple 0628
Claims Processor	Tony Cooper 6507
Audit Services	
Audit Manager, Medical	Hazel Gladney 758-1518
Administrative Assistant	Mary Howlett 758-1566
Medical Claims Auditor	Patsy Scaplen 758-1544
Medical Claims Auditor	Cavell Stanley 758-1562
Audit Analyst	Frances Hearn 758-1553
Audit Analyst	Brenda Rose 758-1591
Audit Manager, Programs	Randy Power 758-1605
Audit Analyst	Ann Winsor 758-1560
Drug Program Auditor	Krystal Ryan 758-1524
Public Service & Administration	
Supervisor (Acting)	Linda Taylor 758-1695
Clerk III	Kerry Whitten 758-1550
Clerk III	Randy Whitten 758-1540
Word Processing Operator	Joan Woods 758-1600
Medical Claims Assessor II	Sandra Gosse 758-1693
Custodian	Kevin Stamp 758-1569
Data Entry Operator	Michelle Dwyer 1536
Data Entry Operator	Elaine Barton 758-1528
Data Entry Operator	Lori Oliver 4206
MCP - GRAND FALLS	
Regional Director	Glenn Budgell 292-4009
Administrative Assistant	Roxanne Fudge 292-4008
Manager of Public Service & Administration (Acting)	Garry Jewer 292-4010
Clerk IV (Purchasing)	Cathy Bennett 292-4012
Clerk III	Vacant 292-4026
Clerk III	Terrence Wheeler 292-4024
Clerk III	Enos Bungay 292-4025
Word Processing Operator	Teresa Laite 292-4000
Custodian	Freeman Piercey 292-4050
Data Entry Operator	Brenda Pelley 292-4599
Data Entry Operator	Jaqueline Mills 292-4505
Data Entry Operator	Paula King 292-4070
Manager, Medical Affairs & Training	Vacant 292-4049
Clerk IV	Margaret Foley 292-4049
Administrative Officer	Brenda Martin 292-4023
Manager, Claims Assessing	Cherry Hicks 292-4004
Medical Claims Assessor	Carolyn Braye 758-4044
Medical Claims Assessor	Jayne Hunter 292-4040
Medical Claims Assessor	Wanda Pardy 292-4039
Medical Claims Assessor	Beverley Thorne 292-4042
Medical Claims Assessor	Pauline Faulkner 292-4038
Medical Claims Assessor	Kathy Buckley 292-4041
Medical Claims Assessor	Madonna Smith 292-4028
Medical Claims Assessor	Helen Noseworthy 292-4043
Medical Claims Assessor	Pam Arnold 292-4046
Manager, Claims Processing	Paulette Davis 292-4013
Claims Processor	Phyllis Andrews 292-4033
Claims Processor	Lynette McDonald 292-4030
Claims Processor	Bernie MacDonald 292-4029
Claims Processor	Judy Melvin 292-4032
Claims Processor	Ina Ivany 292-4034
Claims Processor	Yvonne Yates 292-4047
Claims Processor	Harry Rideout 292-4035
Claims Processor	Verena Skard 292-4036
Reception Desk	Vacant 5021
Main Fax Number (Records Centre) 5824
I T Help Desk 3785
Office of the Chief Information Officer 1981
Newfoundland & Labrador Centre For Health Information 757-2409

Note: All Departmental telephone numbers begin with "729" unless otherwise stated.

July 7, 2006