



GOVERNMENT OF
NEWFOUNDLAND AND LABRADOR
DEPARTMENT OF FOREST RESOURCES
AND AGRIFOODS

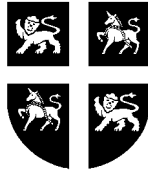
ANNUAL REPORT

2002/03



Honourable Edward J. Byrne, Minister

www.gov.nl.ca/nr



GOVERNMENT OF
NEWFOUNDLAND AND LABRADOR
**DEPARTMENT OF FOREST RESOURCES
AND AGRIFOODS**

ANNUAL REPORT

2002/03

www.gov.nl.ca/nr

In accordance with government's commitment to accountability, I hereby submit the 2002-03 annual performance report for the Department of Forest Resources & Agrifoods. This report addresses the department's activities and outcomes from April 1, 2002, to March 31, 2003.

Edward J. Byrne

Minister

Forest Resources and Agrifoods

TABLE OF CONTENTS

1. Department Overview 4

2. Shared Commitments 7

3. Highlights 8

4. Lines of Business/Achievements 11

5. Opportunities 20

6. Appendix A - Statement of Expenditure and Related Revenue 23

Departmental Overview

The Department of Forest Resources and Agrifoods is responsible for managing and regulating the forest resources of the province and facilitation of the development and growth of our agriculture and agrifoods sector. Our vision is:

“to enhance and manage the forest and agricultural resources of the province for the maximum benefit of all residents, while at the same time ensuring the integrity of the ecosystem is maintained through sustainable management practices for future generations”.

The Department is comprised of two branches - Forest Resources and Agrifoods. The mandate of the Forest Resources Branch is:

“to conserve, manage and use the ecosystems of the province, while ensuring the productivity and sustainability of these systems and their functions, which sustain forests and to provide for the utilization of resources by the people of the province under the principles of sustainable development, an ecologically-based management philosophy and sound environmental practices.”

The mandate of the Agrifoods Branch is:

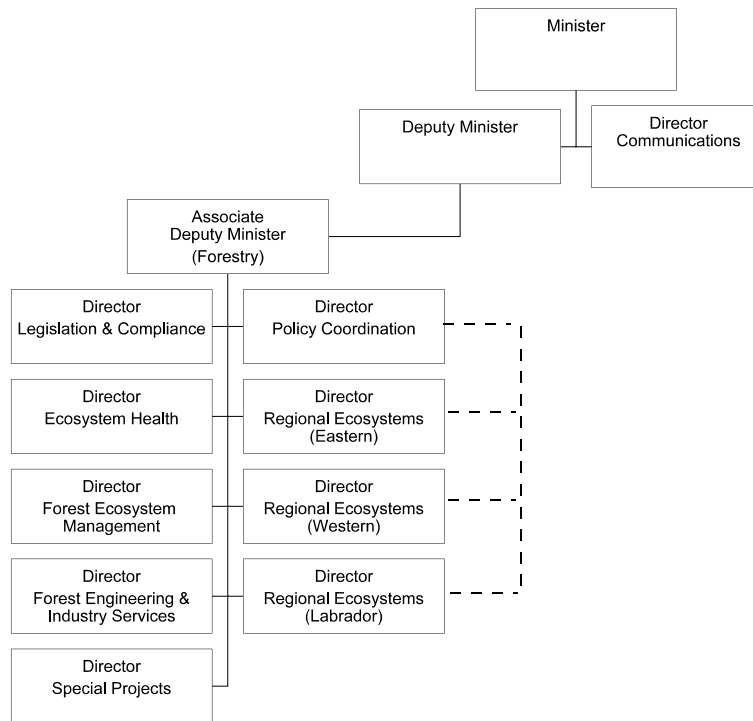
“to contribute to the betterment of society through economic and rural development throughout Newfoundland and Labrador by promoting the continued development, expansion and diversification of competitive and sustainable primary and value-added agrifood business”.

The Department's forestry programs are delivered through three regional offices located

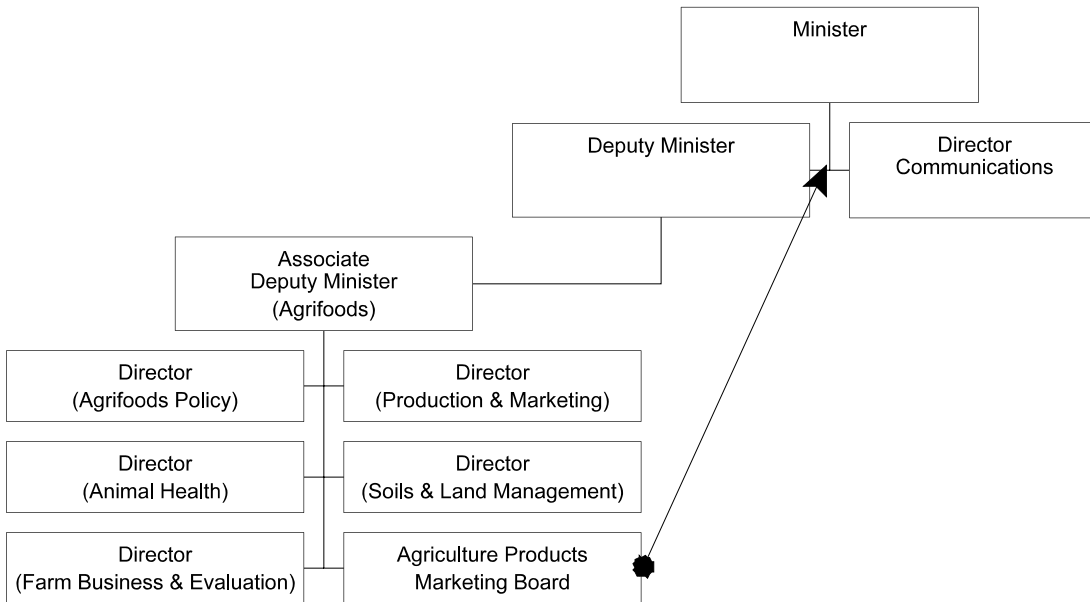
in Gander, Corner Brook and Labrador. Agrifoods programs are developed through eight regional offices located in St. John's, Carbonear, Clarenville, Gander, Bishops Falls, Pynn's Brook, McKays and Happy Valley-Goose Bay. The headquarters is in Corner Brook while the executive offices are in both St. John's and Corner Brook. In addition, the Department is subdivided into 24 Forest Management Districts - 18 on the Island and six in Labrador; and 10 agriculture units - nine on the Island and one in Labrador.

The total expenditure for the Department of Forest Resources and Agrifoods in 2002/03 was \$44.4 million. A summary of expenditure and related revenue for the year ended March 31, 2003, is given in Appendix A.

DEPARTMENTAL ORGANIZATIONAL CHART (FOREST RESOURCES)



DEPARTMENTAL ORGANIZATIONAL CHART (AGRIFOODS)



Note: The Agriculture Products Marketing Board reports to the Associate Deputy Minister

Shared Commitments

The Department of Forest Resources and Agrifoods works closely with other provincial departments, governments, industry, and stakeholders in the implementation of its programs. A major function of the Department is to actively participate in the promotion, development and maximization of the forestry and agrifoods sectors in concert with industry.

Cooperation with stakeholders, such as loggers, farmers, processors and associations, is essential to the success of the Department's programs which stimulate the sustainable growth of the industries while also ensuring environmental integrity. Programming, strategic planning, research and development and technology adoption must be designed with stakeholders in mind. Sharing risk, problem solving, communications and understanding the dynamics of stakeholders are key concepts for industry development. Without a close working relationship, the effectiveness of our programming would be minimal.

In the forestry sector, partnerships with the model forest, pulp and paper industry, aboriginal groups, federal government, and stakeholders have advanced ecosystem-based management of our forest resources by gathering and applying scientific information in management of our resources. This has also raised awareness of the need for sustainable development of our forest resources.

The Department's forest management plans are prepared through a management planning process which includes consultation meetings with all stakeholder groups in each of the Forest Management Districts.



Forest Management Planning - District 19, Labrador

Collaboration continues to be a key component to success in the agrifoods industry in the province. Federal and provincial governments have worked together with industry in the areas of research and development and the adoption of new technologies with positive results. Specifically, Agriculture and Agri-Food Canada's Atlantic Cool Climate Crop Research Centre (ACCCRC) located in St. John's has been pivotal in these partnership efforts. The corn project is just one example of how the cooperative approach has positively impacted the industry. Sweet corn and silage corn are now being produced across the province and is improving the bottom line for producers. Over 800 acres of corn were grown this year. Governments and industry are working to find solutions and overcome industry challenges.



Corn is now being grown in the province because of the partnership efforts of governments and industry.

Highlights

Forestry

- In 2002-03, the Government of Newfoundland and Labrador signed a Memorandum of Understanding (MOU) with the Labrador Metis Nation (LMN) to facilitate the participation of the LMN in Labrador's forest management process in the Labrador Forest Management Districts 19, 20 and 21. Through the MOU, Government is committed to continue to work with the LMN to further develop the forest industry in Labrador for the benefit of the people of Labrador, the Metis people and the communities in which they live.
- In January 2001, Government signed a "Process Agreement" with the Innu Nation in Labrador. One of the deliverables from this agreement was for the Innu Nation and Newfoundland Forest Service to prepare an ecosystem-based management plan for the Labrador Forest Management District 19. During 2002-03 this plan was completed and registered with the Minister of Environment, as per the Environmental Protection Act.
- 2002 also saw the harmonization of the expiry dates of 38 non-renewable timber licences held by Abitibi-Consolidated to the year 2010. The 38 licences involved, covering a total area of 965,585 hectares, were due to expire at 10 different dates between 2002 and 2021. The first of these, which represents approximately 380,000 hectares was due to expire in 2002.

The 2010 common expiry date will allow for the development of future land tenure arrangements for all the timber licences at one time instead of a fragmented approach. This will allow ample time for research on future land tenure systems, public consultations, as well as input from various government departments.



Timber Harvesting Operations

Agrifoods

The Agrifood Industry continues to thrive in Newfoundland and Labrador. Our producers have pursued opportunities and diversified their agribusinesses resulting in an industry which has seen steady growth over the past decade.

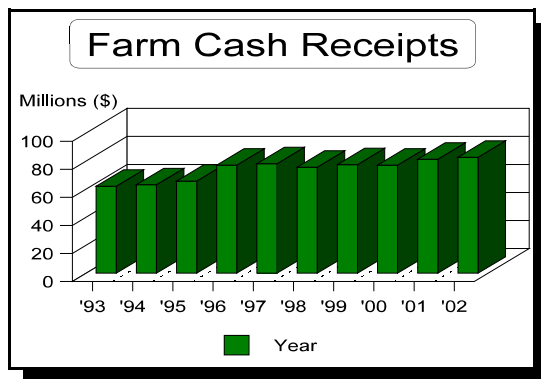
- In 2002, total farm cash receipts increased to \$82.7 million. Growth included increased receipts in egg production (4.5%), floriculture and nursery products (6.8%), dairy products (3.0%) and vegetables (7.6%).
- Farm Cash Receipts have **grown over 33% from 1993 to 2002**. The largest categories of agricultural products in terms of total receipts are dairy products (34%), hens and chickens (20%), eggs (13%) and floriculture and nursery (13%). The industry has faced challenges and agribusinesses are becoming more integrated, efficient operations that are adapting to the demands of the marketplace. Diversification, secondary processing and value-added activities are all contributing to the increased growth in our industry.

- In June 2002, federal and provincial governments signed the Agricultural Policy Framework - a national comprehensive approach for the industry. This five-year Federal/Provincial APF Agreement will begin in the fiscal year 2003/2004 replacing the existing Federal/Provincial Safety Nets Program.



Over 7000 pounds of cranberries harvested in 2002 from the Stephenville Crossing site!

- Agrifoods’ research and development efforts have been very successful to date. Government is partnering with producers to grow new crops in the province such as cranberries, seabuckthorn and corn. Commercial pilot sites for cranberry production have been developed in various areas of the province - Terra Nova, Frenchman’s Cove, Stephenville Crossing and Stephenville. This initiative has achieved great results with the first commercial harvest of cultivated cranberries in Newfoundland and Labrador on November 13, 2002.



- The dairy industry in Newfoundland and Labrador has recently negotiated an agreement to enter the national dairy system. Entrance into this agreement gives the dairy industry in this province the opportunity to double its size in the next 13 years with an allocation of over 31 million litres of industrial milk available to this province in this time frame.
- Producers are taking a collaborative approach to their agribusinesses. This year saw the establishment of the Lethbridge Cooperative Storage and Packaging Facility - a state of the art facility that allows producers to better manage the quality of their produce during storage. As well, in the Carbonear region, producers have joined together to form the Baccalieu Trail Farmers Cooperative with the intent to begin a cooperative farmers market.

LINES OF BUSINESS/ACHIEVEMENTS

The Department delivered its programs and services through the following five broad lines of business in 2002-03.

1. *Forest sustainability, health and industry services.*
2. *Legislation and compliance services.*
3. *Agriculture and agrifoods production.*

Line of Business 1: Forest Sustainability, Health and Industry Services

Under this line of business, the Department develops provincial policy and programs that enable citizens to benefit from services and ecosystems while ensuring their sustainability and health. The programs associated with forest sustainability, health and services, are implemented through the regional Forest Management Districts. The following activities were carried out under this line of business in 2002-03.

- In 2002-03, a total of \$2.8 million was committed to the construction of forest resource roads in Newfoundland and Labrador. A total of 45 new projects were tendered and constructed in 2002-03, five jobs were carried over from the 2001 and five more were funded through agreements with local Regional Economic Development

(RED) Boards for a total of 55 projects. These jobs accounted for the construction of 80 km of new resource road and the re-construction (upgrading) of an additional 21 km.

- Based on a ten-year average, the 2002 fire season was well below average in both terms of fire starts and productive hectares burnt. The Department attended to 143 forest fires which burnt a total of 35,484 hectares. The majority of the area burnt (96%) was in Labrador on non-productive forest land. Of the fires actioned, 116 were human related while the remaining 27 were caused by lightning strikes.
- In 2001, the United States (US) launched two investigations against Canadian softwood lumber related to countervailing duty and anti-dumping. Currently, softwood lumber exports to the U.S. from this province are subject to an anti-dumping tariff of 8.43%. Provinces outside Atlantic Canada are subject to an additional 18.79% countervailing duty. The Province is continuing to work with the other Atlantic Provinces within the framework of the Maritime Lumber Bureau to reduce or eliminate these tariffs. The Province's approach, along with the other three Atlantic Provinces, continues to be for no countervailing duty, no anti-dumping tariff and no replacement tax or other remedial measure.
- In 2002-03, the Department implemented a load slip tracking system to more accurately track the amount of commercially harvested

timber being transported on public highways and forest access roads. The system, which came into effect August 1, 2002, was introduced to strengthen the current process of tracking commercially-harvested timber and help reduce the problem of unreported harvesting and processing of timber by making the transportation of illegal timber more difficult. This will reduce the flow of illegal timber and provide more certainty as to the drain on our forest resources, thereby enhancing the accuracy of annual allowable cut calculations which govern forest sustainability.

- A new ecosystem-based management plan was prepared for District 19 in Labrador by the Innu Nation and the Department of Forest Resources and Agrifoods. This was one of the deliverables under “Process Agreement” signed between the Government and the Innu Nation in 2001. The main objectives of the plan are to manage forest resources on a sustainable basis, protect cultural values and develop a sustainable forest-based economy.
- The Forest Engineering and Industry Services Division of the Department continued to make progress in increasing the efficiency and effectiveness of the insect control program, while minimizing negative environmental impacts. A significant insect control program was successfully carried out in 2002/03 with evident success. On-going dialogue and information flow with

regulatory officials during the preparation of plans for the 2002-03 program resulted in improvements to the review process. There is still room for further improvement and the ongoing exchange will potentially enable this to occur for future programs.

The initiative to investigate the feasibility of multi-year program approval is still an ongoing issue and goal. Progress to date has been slow, but it is still desirable to meet this objective. Efficient delivery of the program has been achieved due to flexibility and logistics associated with the operational aspects of the program. The overall goal remains the same in terms of the efficient development of the program and the streamlining of the required review processes necessary prior to program implementation and delivery.

- In 2002-03, work on refining the gross merchantable volume inventory adjustments continued. Field survey areas were selected on all three limits and drain estimates from harvesting, fires and insects were further refined. Work on assessing timber utilization also continued in 2002-03 with utilization surveys conducted on all three limits. All the information collected was added to the Department’s database with the goal of completing a final summary of all Forest Management Districts by 2005.
- The Department was also successful this year in accessing numerous non-

AAC stands through its planning process and through the provincial capital roads program. This provided additional fibre for many contractors on the island portion of the province.

- During the 2002-03 fiscal year, 12,742 hectares were silviculturally treated and 8.6 million trees were planted. Treatments included precommercial thinning, commercial thinning, site preparation and vegetation management. This work provided 13,157 person weeks of employment throughout the province.
- Based on a 10-year average, the 2002 fire season was below average both in fire starts and productive hectares

burnt. The Province recorded 143 forest fires which burnt a total of 35,484 hectares. The majority of the area burnt was in Labrador on non-productive forest land. Only 1,258 hectares of productive land was burnt during the 2002 fire season.

- On-going infestations of two insect pests (hemlock looper and balsam fir sawfly) continued in 2002 in various locations in insular Newfoundland (NF). Only a few small pockets of yellowheaded spruce sawfly infestation were reported in central NF. The Department of Forest Resources and Agrifoods (DFRA) carried out two operational control programs on approximately 119,000 hectares (ha), one against the hemlock looper using both Mimic and B.t.k. and a smaller control program using Neemix 4.5.



Goose Bay Tree Nursery Operations in Labrador

Line of Business 2: Legislation and Compliance Services

This line of business includes the programs under the Legislation and Compliance Division. Activities include the enforcement of the regulations under the Wildlife, Forestry, Federal Fisheries (Inland), All Terrain Vehicles and Migratory Birds Acts, as well as the enforcement of infractions of regulations under the Provincial Parks Regulations and Criminal Code of Canada. In addition, it includes the preparation of legislation and/or amendments to the Wildlife and Forestry Acts.

The following is a summary of charges laid under various Acts in 2002-03:

Table 1: Summary of Charges Laid by Act in 2002-03:

ACT	Total Charges Laid
Wildlife	755
Forestry	777
Federal Fisheries (Inland)	51
All-Terrain Vehicle	90
Migratory Bird	13
Other ¹	6
Total	1692

¹Violations classified as “Other” include infractions of regulations under the Provincial Parks Regulations and Criminal Code of Canada, etc.



Forestry Branch Enforcement/Compliance Operations

The Division also coordinates special compliance investigations and plays an integral role in the development of policy for special investigations as well as provides expertise for the development of new legislations, policies, procedures and standards.

In 2002-03, there were a total of five special investigations carried out by the Division which resulted in several individuals being charged and a number of fines being issued under the Wildlife Act.

Line of Business 3: Agriculture and Agrifood Production

The Department's role in the agrifood industry is to promote the continued development, expansion and diversification of our primary and value-added agrifood businesses.

The Agrifoods Branch works towards progress in the following areas:

- ▶ To improve the competitiveness, sustainability, and profitability of the agrifoods industry.
- ▶ To increase the level of secondary food manufacturing in the Province,
- ▶ To enhance agricultural land productivity,
- ▶ To minimize the impact of animal diseases on the agricultural economy and public health, and
- ▶ To expand the agricultural activity in Labrador.



Secondary Processing is a significant contributor to the value of the industry.

In 2002-03, the following activities were carried out through by the Agrifoods Branch:

- On-Farm Mapping Program provided detailed mapping data to 16 farms.
- Detailed Soil Suitability Mapping was carried out in nine areas totaling 30,000 acres.
- Agrifoods GIS/Mapping System was developed and mapping produced for on-farm maps, Agricultural Atlas, soils maps and farmland development projects.
- An Overview of the Newfoundland and Labrador Agrifoods Industry was completed.
- A total of 79.5 acres of plowed-in tile drainage was installed for seven dairy producers in the province to improve land for forage hay production and silage corn production.
- The Peatland Drainage Program completed 35 acres of new development for seven producers - four sites for sod production and three sites for vegetable production. Maintenance work was completed on 40 acres of land for sod producers. As well, there was development and maintenance on 30 acres of cranberry bogs.
- More than 100 acres of land was surveyed and drainage plans were developed in preparation for the next fiscal year.

- Professional veterinary services are provided to serve the routine and emergency needs of our livestock and poultry industry.
- The Animal Health Division's laboratory services provided excellent service for the livestock owners and regulatory agencies. As well, it provides reference service for affiliated groups such as wildlife agencies, private veterinarians, and researchers.
- In December 2002, rabies was diagnosed in a red fox on the island portion of the province in St. Paul's. This was the first case of rabies reported on the island since 1989. In the fiscal year, there was a total of 14 cases of rabies confirmed on the island. The Agrifoods Branch, in a cooperative effort with a variety of other provincial government departments, began an Eradication Program with the \$2.5 million committed by the Province.
- In cooperation with Health Canada, provincial health, wildlife and conservation agencies, the Animal Health Division carried out West Nile virus surveillance for this province. So far there is no indication that the disease has arrived in this province.
- The milk and meat quality environmental regulation and analytical programs, in most cases, are required by law and are necessary to ensure minimal food safety standards in this province. The environmental sampling program with the layer industry is a voluntary program established under national guidelines for the identification and elimination of *Salmonella enteritidis*, a serious human health threat, from the layer industry.
- Support has been provided for the development and implementation of national, industry-lead food safety programs. The most advanced industries are the dairy, egg and broiler industries.
- The Animal Health Division also has the legislative responsibilities to respond to complaints of cruelty to farm animals. As well, the Division supports and monitors the activities of the Newfoundland Pony Society in its role to protect and promote the Newfoundland Pony under the Heritage Animals Act.
- The Agrifoods Branch has participated in over 20 trade shows throughout the year including the "Agrifood and Garden Show" (Corner Brook), "Trinity-Conception Fall Fair" (Harbour Grace), "Humber Valley Home and Handicraft Exhibition" (Deer Lake) and "Farm Field Day" (St. John's).
- Other production and marketing activities included:
 - ▶ A Quality Tracking Study in the Fresh Blueberry Industry.
 - ▶ Product development work on Cranberries including wine and jams made from locally-produced cranberries.

- ▶ Price Tracking and Price Discovery Reports prepared on a biweekly basis for producers.
- 2002 was the first year for the Province to participate in an Open Farm Day which is an Atlantic Canada-wide event. This year eight farms participated and it gave the public the opportunity to visit an actual farm to see its operation. Open Farm Day was well received by both the public and the producers.



2002 marks the first year of Open Farm Day in the province

- Work has been done in partnership with the Blueberry Development Corporation for the development of five demonstration plots throughout the Province. Land leveling was completed on two of these sites this fiscal year.
- The Total Mixed Rations Project has provided farms with the opportunity to feed livestock using a total mixed ration system. A complete ration

provides adequate nourishment that is required to meet the needs of the dairy cow and maintain proper rumen functioning.

- Diversification has been a key area of success for the industry. The Department has partnered with industry in a variety of research and development projects with tremendous success including the following areas:

- ▶ **Corn Production** - Government and industry have collaborated in research and development efforts to produce corn in the province. In 2002, approximately 800 acres of silage corn was produced. Dairy producers in the Province are experiencing the nutritional benefits of the product when feeding their dairy animals and many now use corn production as part of their crop rotation.
- ▶ **Cranberry Project** - 2002 marked the first commercial crop in this relatively new crop in the province.
- ▶ **Sea Buckthorn** - This initiative is in the early stages with the plan to move into a commercial phase in 2003.
- ▶ **Small Fruit Variety Trials** - The Province continues to work in developing the small fruit industry. For example, research in the Lingonberry (commonly referred to as the Partridge Berry) has found two

- new varieties that are suitable for on-farm production.
- ▶ Barley and Wheat Production - Barley and wheat have shown promising results and can be grown and harvested with yields comparable to other Atlantic Provinces and allow a substantial reduction in the overall feed costs for ruminant livestock.
 - The Canada-Newfoundland and Labrador Agri-Food Innovation Program is a cost-shared initiative between the Government of Canada and the Province of Newfoundland and Labrador. The objectives of the program are: to promote long-term stability of the agriculture and agrifoods sectors by providing incentives for producer organizations and other agrifood businesses; to foster self-reliance in the agricultural and agrifood sectors; and, to promote partnerships and strategic alliances among industry stakeholders. To accomplish these objectives, the program provides contributions to producers and industry associations under one of three initiatives: industry diversification, market development and human resource development. In 2002-03, the Canada-Newfoundland and Labrador Agri-Food Innovation Program provided \$5,451,431 towards 347 projects in the province.
 - The Net Income Stabilization Account (NISA) Program is a federal/provincial program designed to stabilize the income of farmers. In 2002-03, there were 85 producers who participated in the NISA Program. The total value of the NISA accounts for producers in this Province was \$2.1 million as of March 31, 2003.
 - The Canada-Newfoundland and Labrador Crop Insurance Program is a comprehensive all-risk insurance that provides compensation to vegetable growers who suffer crop loss through uncontrollable natural perils. The Canada-Newfoundland and Labrador Crop Insurance Program provided coverage on 678 acres of vegetables in 2002-2003 with a coverage value in excess of \$1.19 million. During the fiscal year, \$196,078 was paid out in indemnity claims. This program enhances risk management programming to producers in the province.
 - The Farm Business Management Program funded activities to improve the business management capabilities of farmers, thereby improving the financial viability of farms and enhancing the competitive position of the industry. Specific activities included administration of the Forage Assistance Program, participation in the development of the Northern Agrifoods Development Strategy, and funding farm business management training initiatives such as “Growing Agricultural Business in Rural Communities through Technology Enhanced Learning in the WorkPlace” seminar.

- Labrador is a recognized as a diverse agricultural region. Currently there are 12 commercial farms in Labrador producing nursery crops, vegetables and fur. Government is committed to further development of the agricultural industry in Labrador. In partnership with other stakeholders, the Agrifoods Branch is developing a strategy known as the Northern Agrifoods Development Strategy. It is the intent of this strategy to outline certain strategic actions that will guide the long-term development of the industry in Labrador. Research and development work in the region include:
 - ▶ Medicinal Herb Projects - Herbs such as Valerian, Echinacea and Feverfew have been grown quite successfully in Central Labrador.
 - ▶ Green Manure and Winter Forage Project - This project has increased the soil organic matter and fertility levels in the region.
 - ▶ Mericrusher Project - This equipment has the ability to easily incorporate brush and plant matter into the sandy soils and has been adopted by producers in Central Labrador to improve the soil medium.

OPPORTUNITIES/CHALLENGES

Expansion of Wooddale Provincial Tree Nursery

In 2003/04 it is planned to increase the tree seedling production at the Wooddale Provincial Tree Nursery from 7.5 million to 10 million in order to keep pace with the Province's expanding reforestation program. This increase in tree seedling production will require the construction of eight new state-of-the-art greenhouses. The nursery expansion is a partnership between the forestry and agrifoods branches of the Department of Forest Resources and Agrifoods. Six greenhouses will be used for tree seedling production while the two others will be used for innovative agrifoods research and crop development.

Sustainable Forestry Management Strategy

The new provincial sustainable forest management strategy is currently being prepared and should be finalized in 2003/04. Public consultations will be held to gain public input into the strategy. The strategy will also be reviewed by forest industry as well as an independent panel with representation from the University of British Columbia, University of Laval and the University of New Brunswick.

National Forest Fire Management Program

The Canadian forest fire agencies through the Issues Committee of the Canadian Interagency Forest Fire Centre (CIFFC) are developing a Five Point Plan to meet emerging forest fire

fighting challenges and key areas of resource shortages. The five components of the plan are: 1. Aerial Fleet Modernization; 2. National Aboriginal Involvement; 3. Fire Equipment Enhancement; 4. Fire Science and Research and 5. Information Management. The plan proposes a new strategic investment in fire science and technology to support forest fire management on a national basis. Implementation of the plan is critical to the Province's forest fire management program.

Newfoundland and Labrador Agrifoods Industry - The Future Outlook

The Agrifoods Industry in Newfoundland and Labrador continues to grow and prosper. Agribusinesses are evolving to meet the changing demands of consumers and have captured opportunities in diversification, secondary processing and value-added activities. This has contributed to a primary and secondary processing industry valued at over \$500 million annually and employment for over 6200 people in many rural areas of the province.

A New National Approach to Agriculture

This fiscal year marks the end of the Federal-Provincial Safety Nets Agreement and will see the beginning of a new national action plan known as the Agricultural Policy Framework (APF) Agreement.

In June 2002, the Federal and Provincial Governments signed the Agricultural Policy

Framework Agreement. This agreement is a new integrated and comprehensive approach to Agriculture.

It is a national approach which focuses on having programs/initiatives under five key elements - food safety and quality, science and innovation, environment, renewal and business risk management. APF's objective is to ensure that Canada is producing the safest and highest quality food in the world in an environmentally responsible manner.

The Agricultural Policy Framework Agreement is the largest ever federal/provincial agricultural funding agreement for Newfoundland and Labrador.

The Province looks forward to moving our industry beyond our current boundaries to even greater success under this new framework agreement.



The vegetable sector is an important contributor to the industry with farm cash receipts' growth of 7.6% in 2002.

APPENDIX A

Department of Forest Resources and Agrifoods Statement of Expenditure and Related Revenue Summary for the Year Ended March 31, 2003

DEPARTMENT OF FOREST RESOURCES AND AGRIFOODS			
STATEMENT OF EXPENDITURE AND RELATED REVENUE - SUMMARY			
FOR THE YEAR ENDED MARCH 31, 2003			
		Actual	Original
		\$	\$
EXECUTIVE AND SUPPORT SERVICES			
1.1.01	Minister's Office	288,773	321,700
1.2.01	Executive Support	624,875	643,700
1.2.02	Administrative Support	3,479,813	3,445,700
	Less: Revenue	(26,919)	(10,000)
	Total Executive and Support Services	4,366,542	4,401,100
FOREST MANAGEMENT			
Forest Management			
2.1.01	Administration and Program Planning	5,415,266	5,708,700
	Less: Revenue	(638,228)	(685,000)
2.1.02	Operation and Implementation	9,752,769	9,549,900
2.1.03	Silviculture Development	7,111,810	7,113,800
	Less: Revenue	(982)	(5,000)
2.1.04	Resource Roads Construction	2,789,748	2,800,000
Forest Protection			
2.2.01	Insect Control	6,202,300	6,500,000
	Less: Revenue	(4,339,210)	(2,800,000)
2.2.02	Fire Suppression and Communications	5,501,120	2,588,000
	Less: Revenue	(1,200,752)	0
	Total Forest Management	30,593,841	30,770,400
AGRIFOODS DEVELOPMENT			
Soil and Land Management			
3.1.01	Administration and Support Services	1,193,664	1,101,300
	Less: Revenue	(11,057)	(33,000)
3.1.02	Limestone Sales	178,954	284,500
	Less: Revenue	(174,307)	(140,000)
3.1.03	Land Development	112,373	500,000
Production and Marketing			
3.2.01	Administration and Support Services	1,660,197	1,548,000
	Less: Revenue	(2,627)	(20,000)
3.2.02	Marketing Board	80,784	76,900
Farm Business and Evaluation			
3.3.01	Administration and Support Services	304,035	284,400
3.3.02	Crop and Livestock Insurance	300,134	234,100
	Less: Revenue	(113,056)	(129,000)
3.3.03	Farm Business Management Initiative	74,774	246,700
	Less: Revenue	(69,216)	(58,300)
3.3.04	Agriculture Safety Nets	6,836,686	7,050,600
	Less: Revenue	(3,208,846)	(4,251,000)
3.3.05	Canadian Farm Income Program	10,775	300,000
Animal Health			
3.4.01	Administration and Support Services	1,719,450	1,306,600
	Less: Revenue	(489,954)	(530,000)
Extension Services			
3.5.01	Administration and Support Services	1,172,892	1,340,800
	Less: Revenue	(104,595)	(44,700)
	Total Agrifoods Development	9,471,060	9,067,900
	TOTAL DEPARTMENT	44,431,443	44,239,400

