

The Newfoundland  
Pony Society

## Colouring Guide and Facts About Our Heritage Animal



© 2014 E



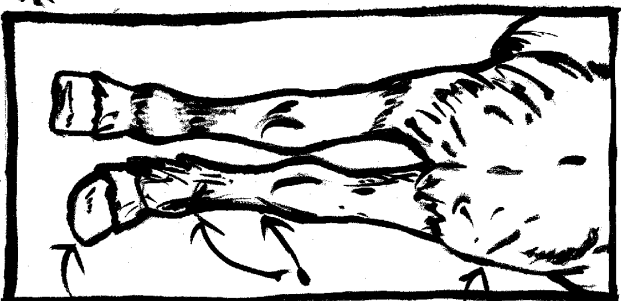
**Skipper - the grey Stallion**

- \* Highland Pony
- Skipper is closely related to the Highland Pony.
- \* Big generous kind eyes, broad forehead, strong back.
- \* Compact body, deep chest, strong silky mane & tail
- \* colours are usually! -  
Shades of dun, grey, brown, bay, liver, chestnut.

Particular strength across the shoulders, each side (deep Muscular strength) good chest. Short back for power



- Skipper of Avalon -



- front view -

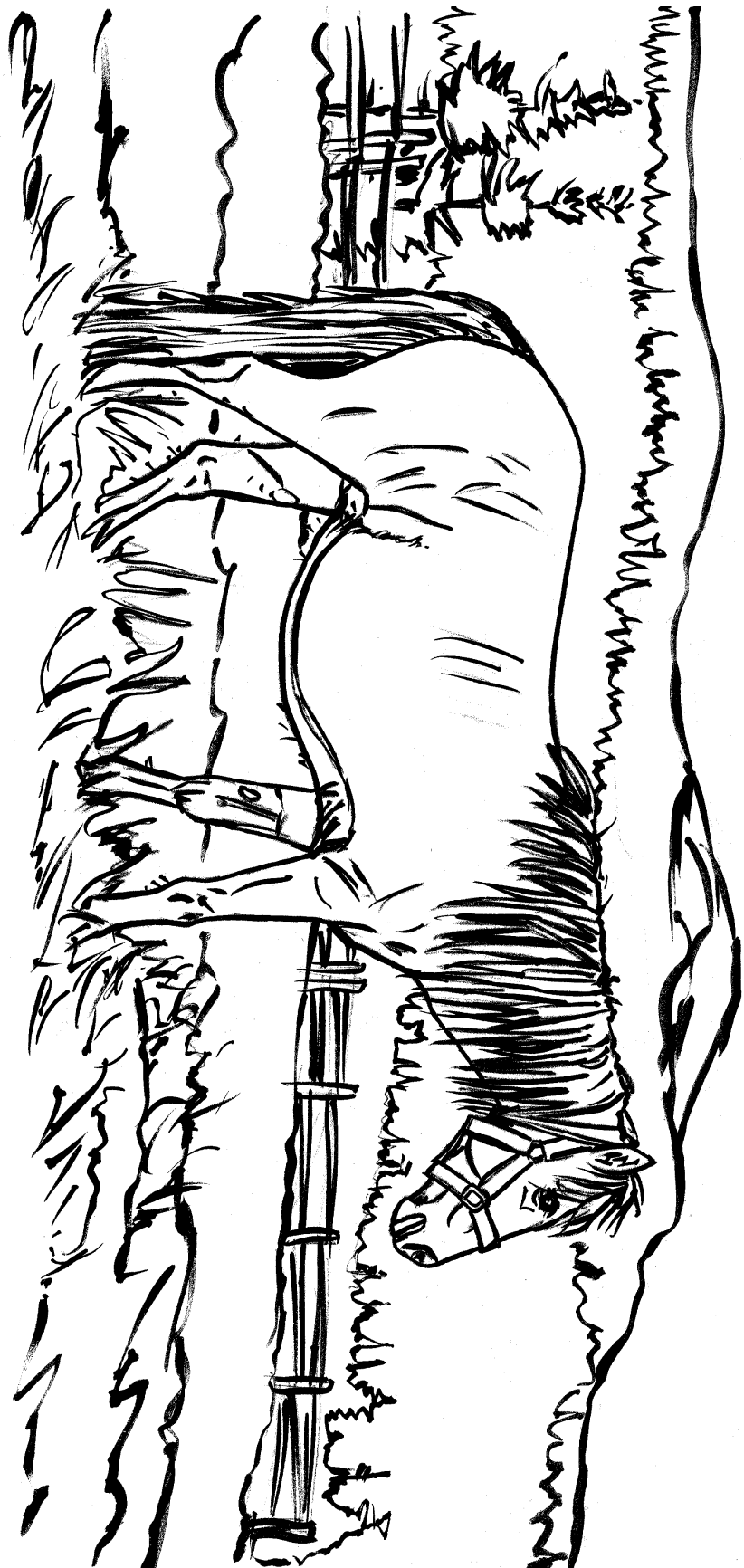
\* Short narrow chest allows his two front feet to be closer together, makes him sure footed in narrow paths etc.

Note:

\* Narrow chest

\* Short Shin (Knee to ankle) this gives him leg power above the knee.

\* Hard hooves for walking on hard ground



- Queen of Torbay -

\* long low set tail  
Protects themselves they back into the wind..



\* long tail Protects them when they back into the wind. (like an extra warm scarf hanging down behind) in that area where many horses would lose heat. \* great characteristic



\* Small furry ears

Small furry ears & a long Big thick mane, nice big generous eyes which reveal the good temperament of the Newfound land Pony. Light Ring around the eye

Hairy fetlock



Short Shin (knee to Ankle) this gives them leg Power above the knee



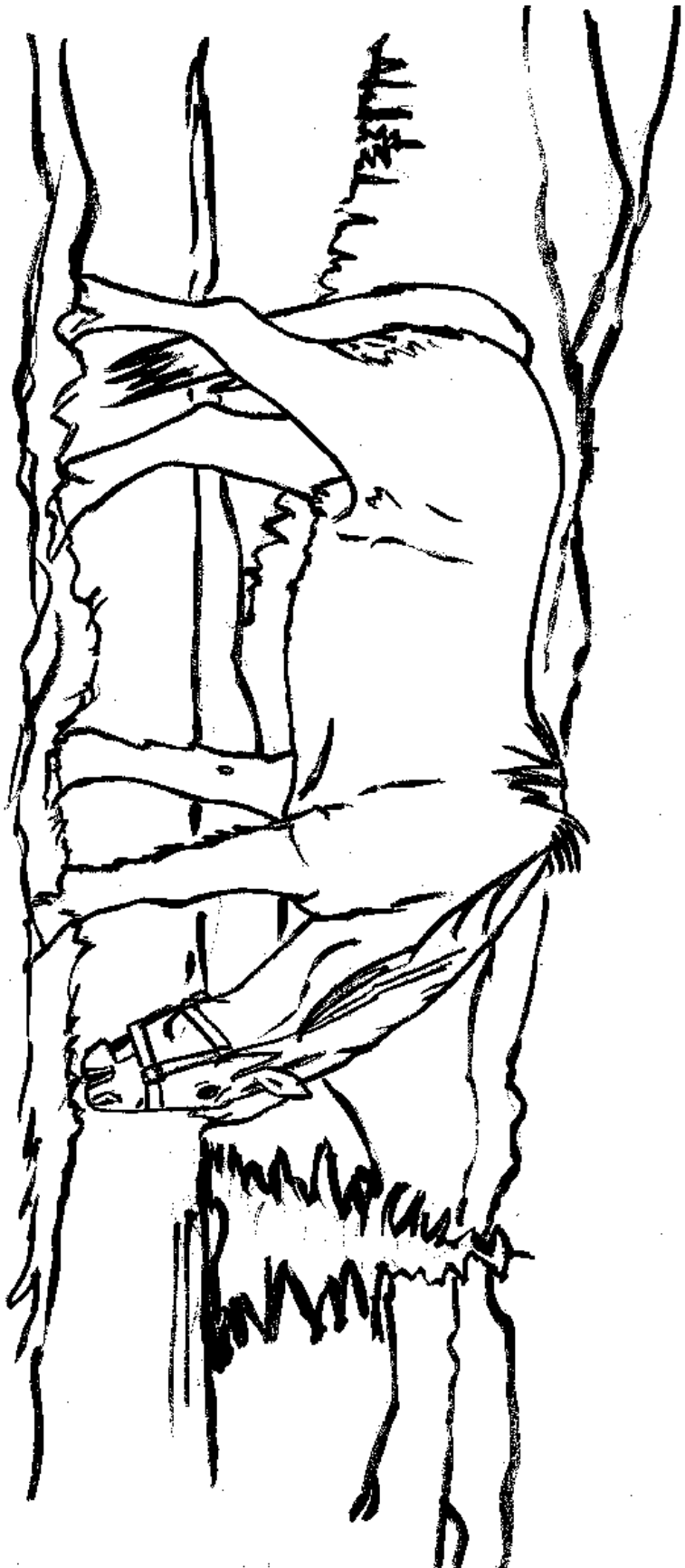
Short narrow chest allows their two front feet to be closer together, makes them sure footed in narrow paths etc



\* Hard hooves for hard ground



\* Has two coats winter & summer



— Billy of Brigus South —

@ALFRED



- \* Short back for Power
- \* Particular strength Power across the Shoulders, each side (deep muscular strength) good chest.



- \* usually Black legs from knee to Ankle
- \* long Black tail
- \* long thick Black mane & tail



- \* Mealy Muzzle
- \* light ring around the eye,

the Newfoundland Ponies range in size small 500 lbs / medium, large 700 lbs / 900 lbs

• Billy of Brigus South.

Skipper - Gallows cove Tarbay -

©Agora



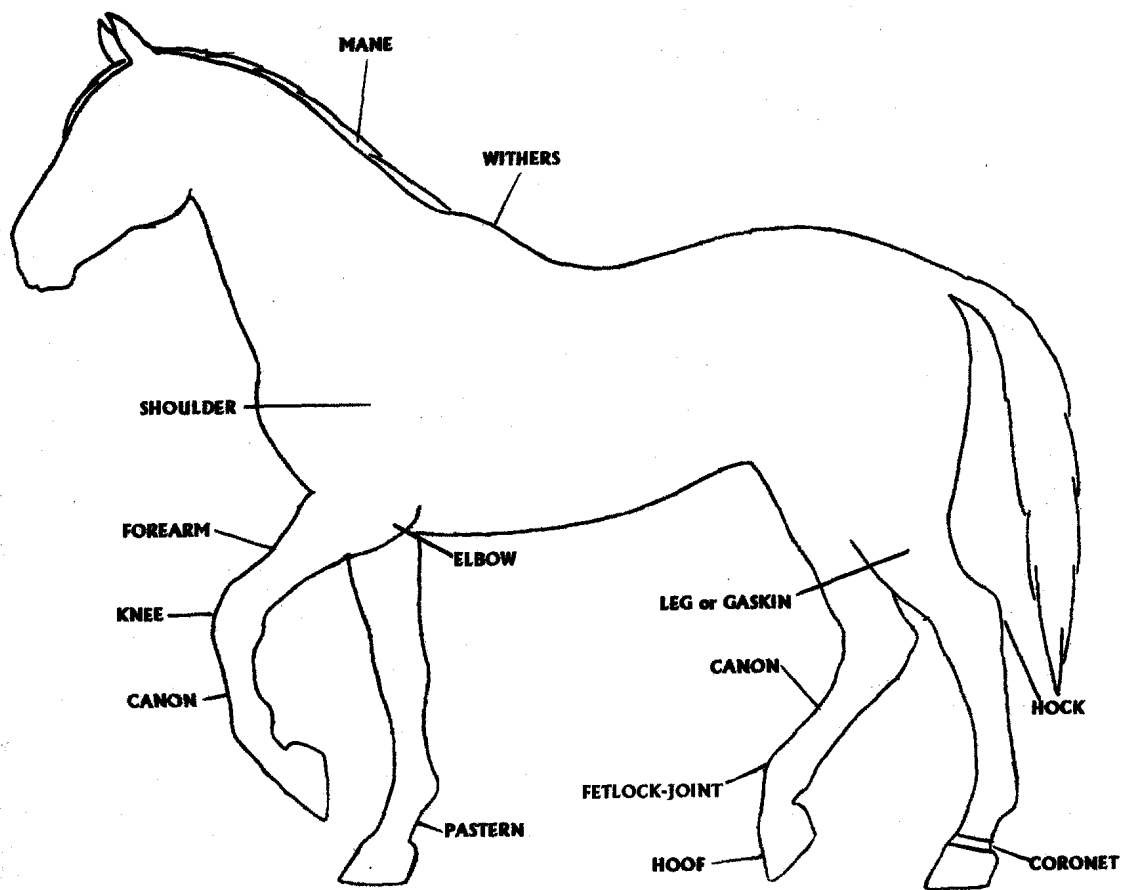




- queen of torbay -

© C. FORD

# Anatomy of the Newfoundland Pony

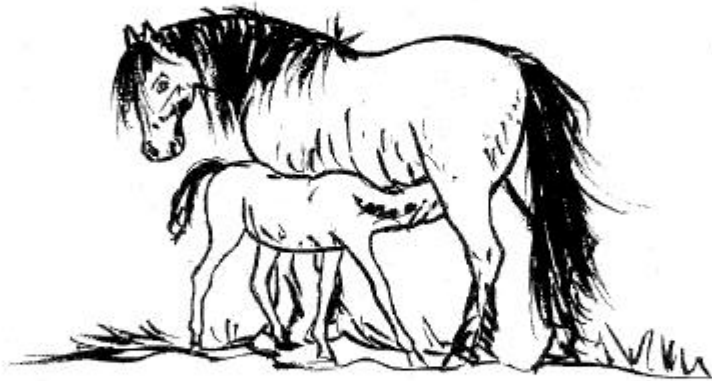


The Newfoundland Pony Society is a registered charity in Canada. We publish a quarterly news letter which is distributed to members of the Society. Yearly membership fees are \$25.00 for family, \$ 15.00 for adult and \$ 10.00 senior/child.

Please direct all inquires to the address below.

Newfoundland Pony Society  
P.O. Box # 5022, Station c  
St. John's, Newfoundland  
A1C-5V3

*"Dedicated to the Protection & Preservation of the Newfoundland Pony"*



*- Beothuk's Cocoa -*

The Newfoundland Pony Society would like to extend special thanks to our member Cliff George who provided the art work for this booklet.