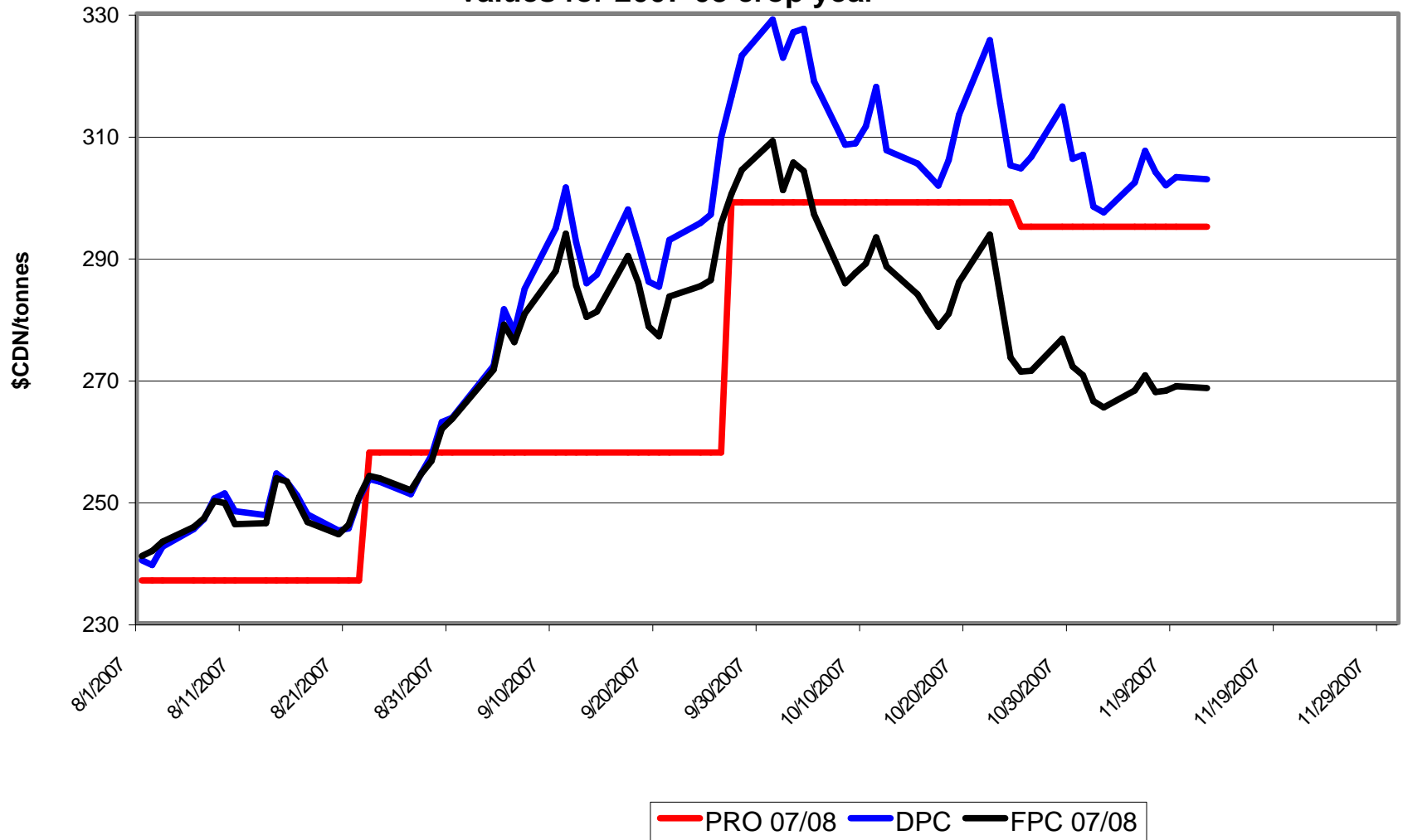
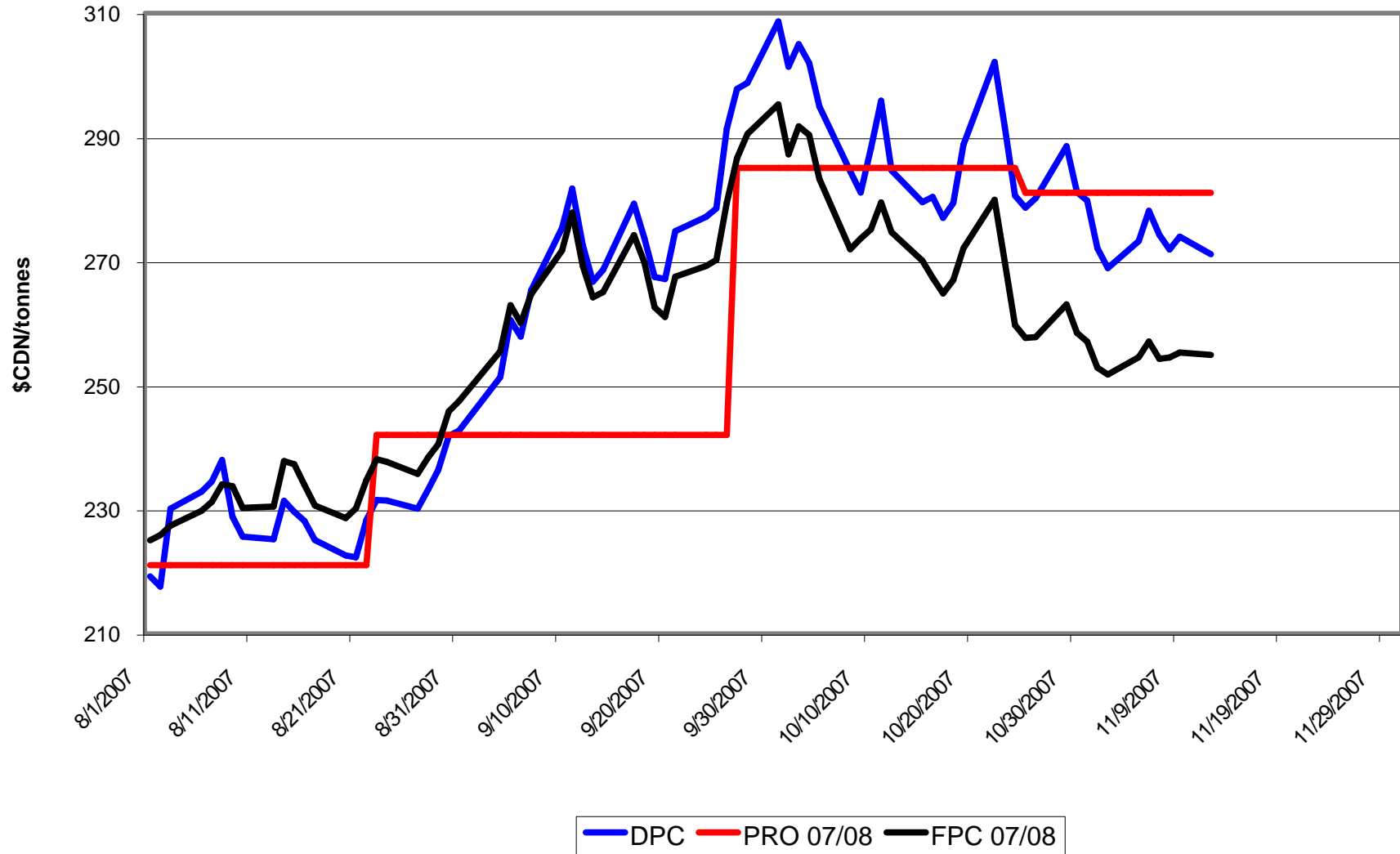


No. 1 CWRs/CWHWS 13.5% Daily Comparison of PRO, FPC & DPC

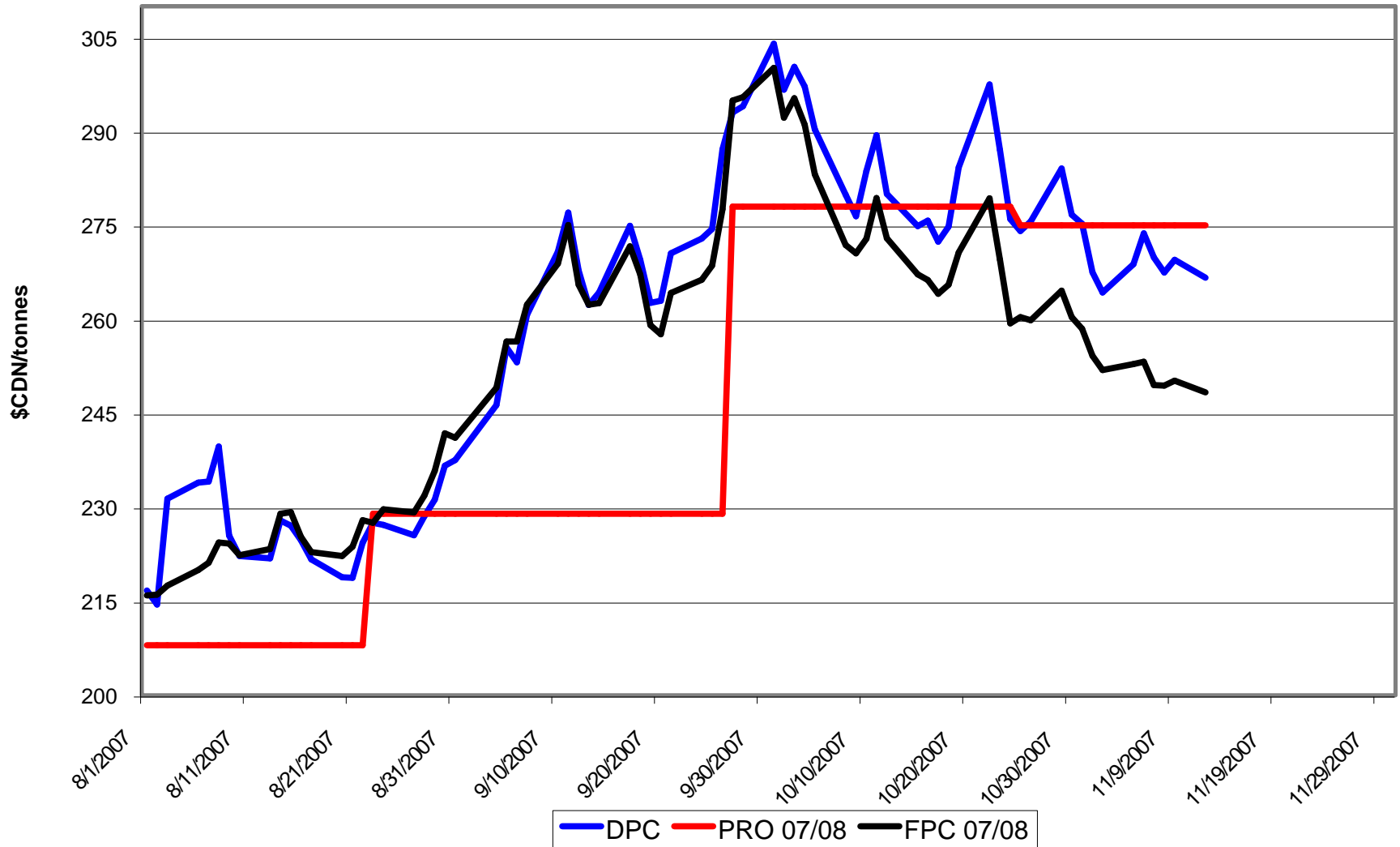
values for 2007-08 crop year



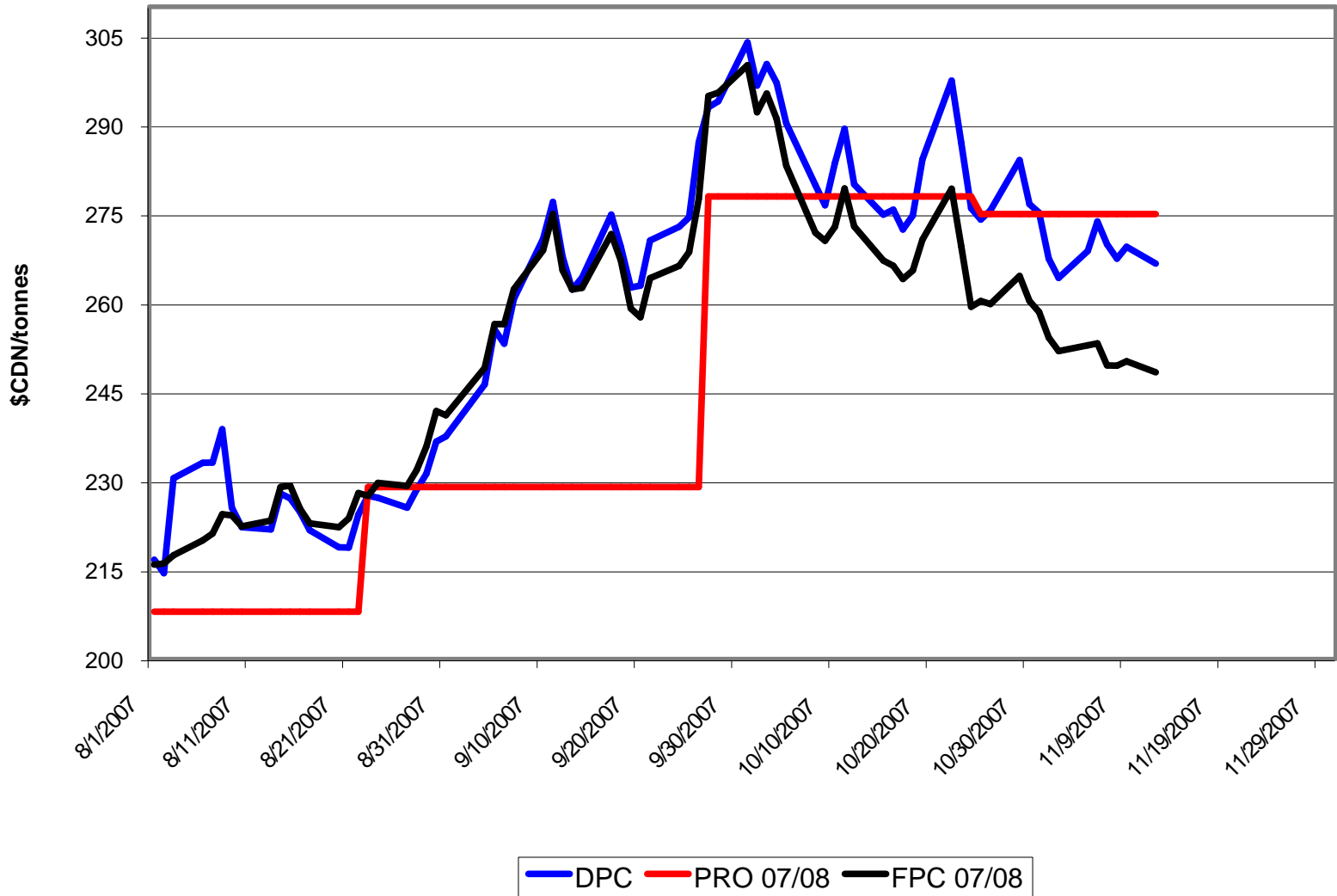
No. 1 CWES Daily Comparison of PRO, FPC & DPC values for 2007-08 crop year



No. 1 CPSR Daily Comparison of PRO, FPC & DPC values for 2007-08 crop year

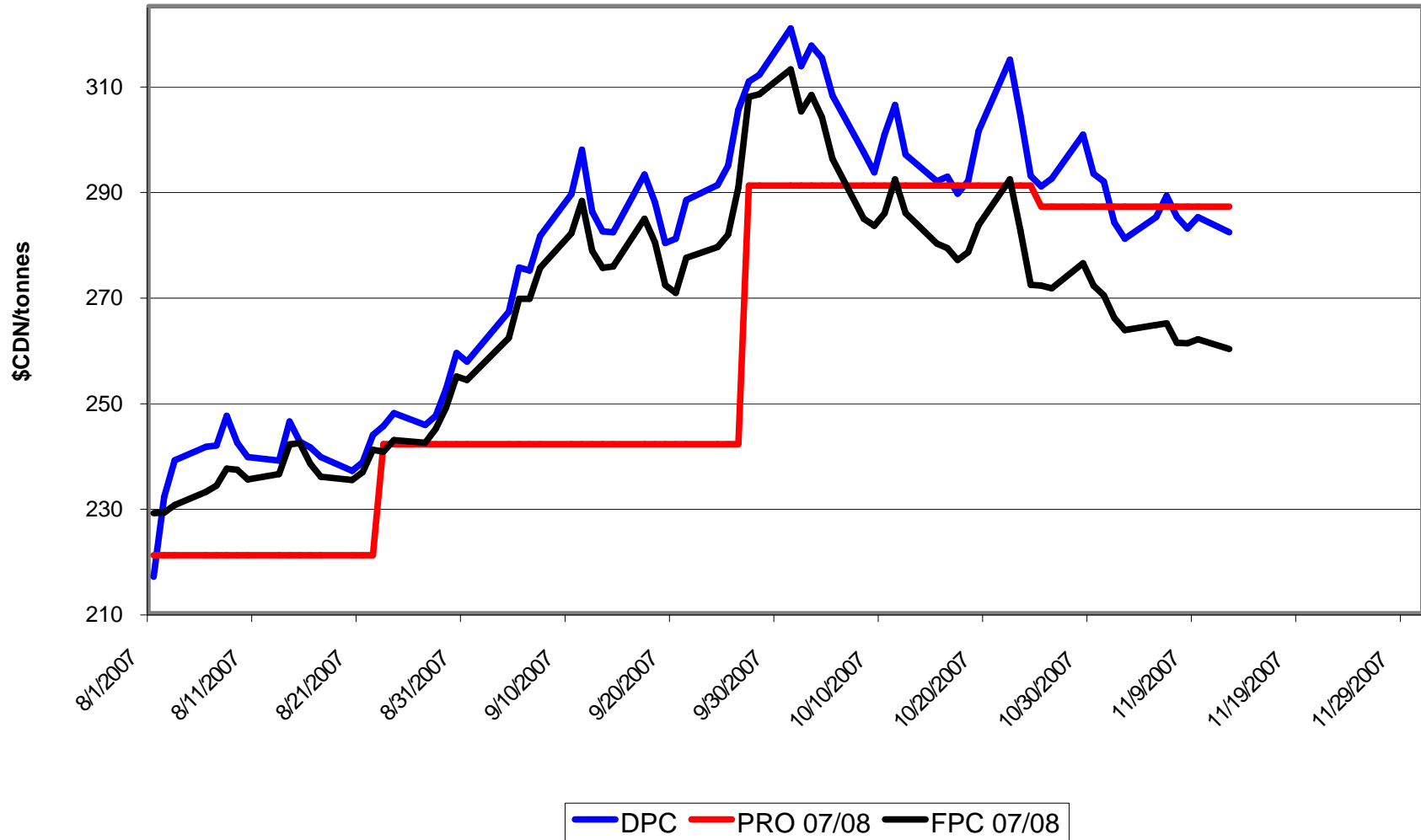


No. 1 CPSW Daily Comparison of PRO, FPC & DPC values for 2007-08 crop year

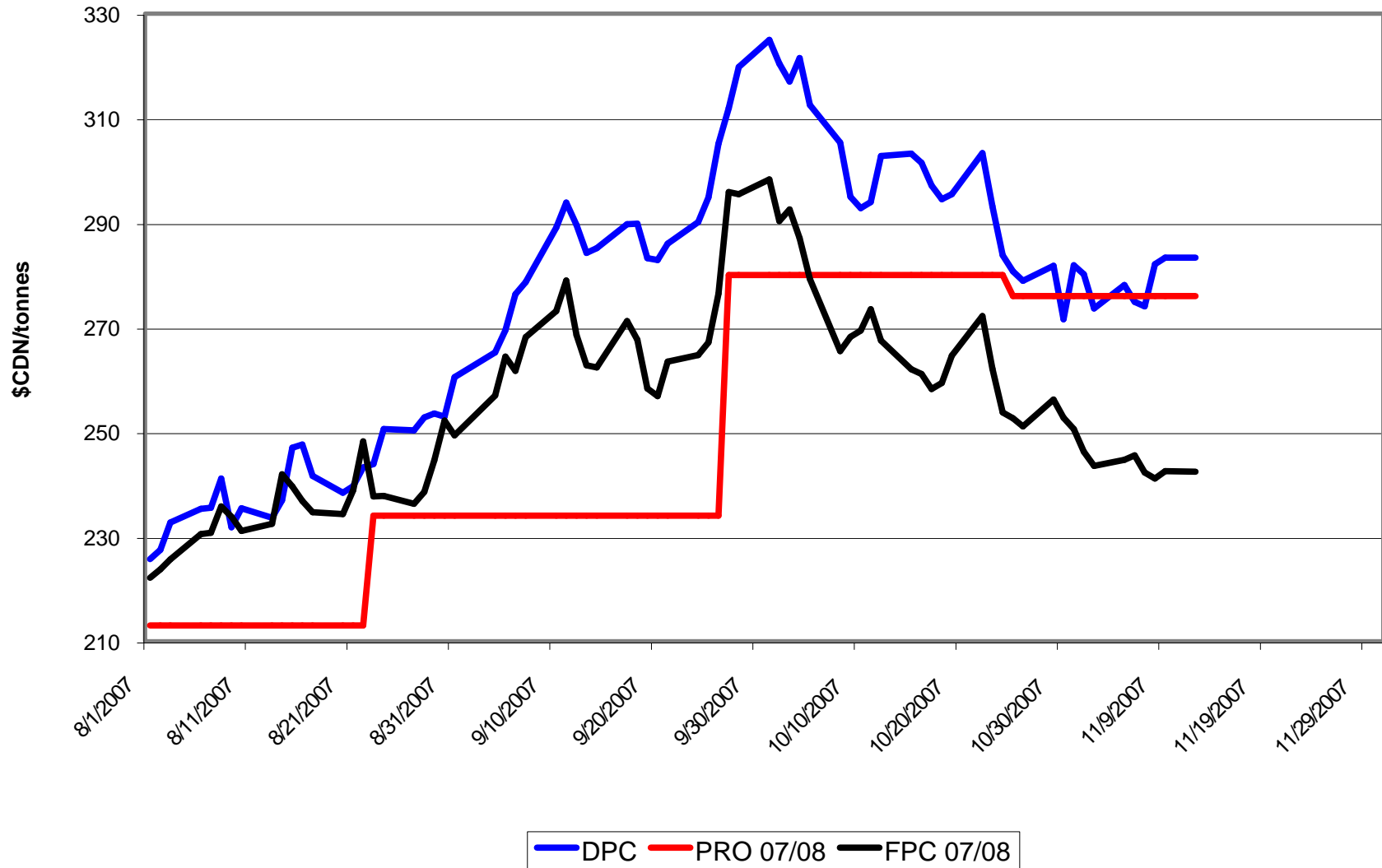


No. 1 CWRW Select 11.5% Daily Comparison of PRO, FPC & DPC

values for 2007-08 crop year

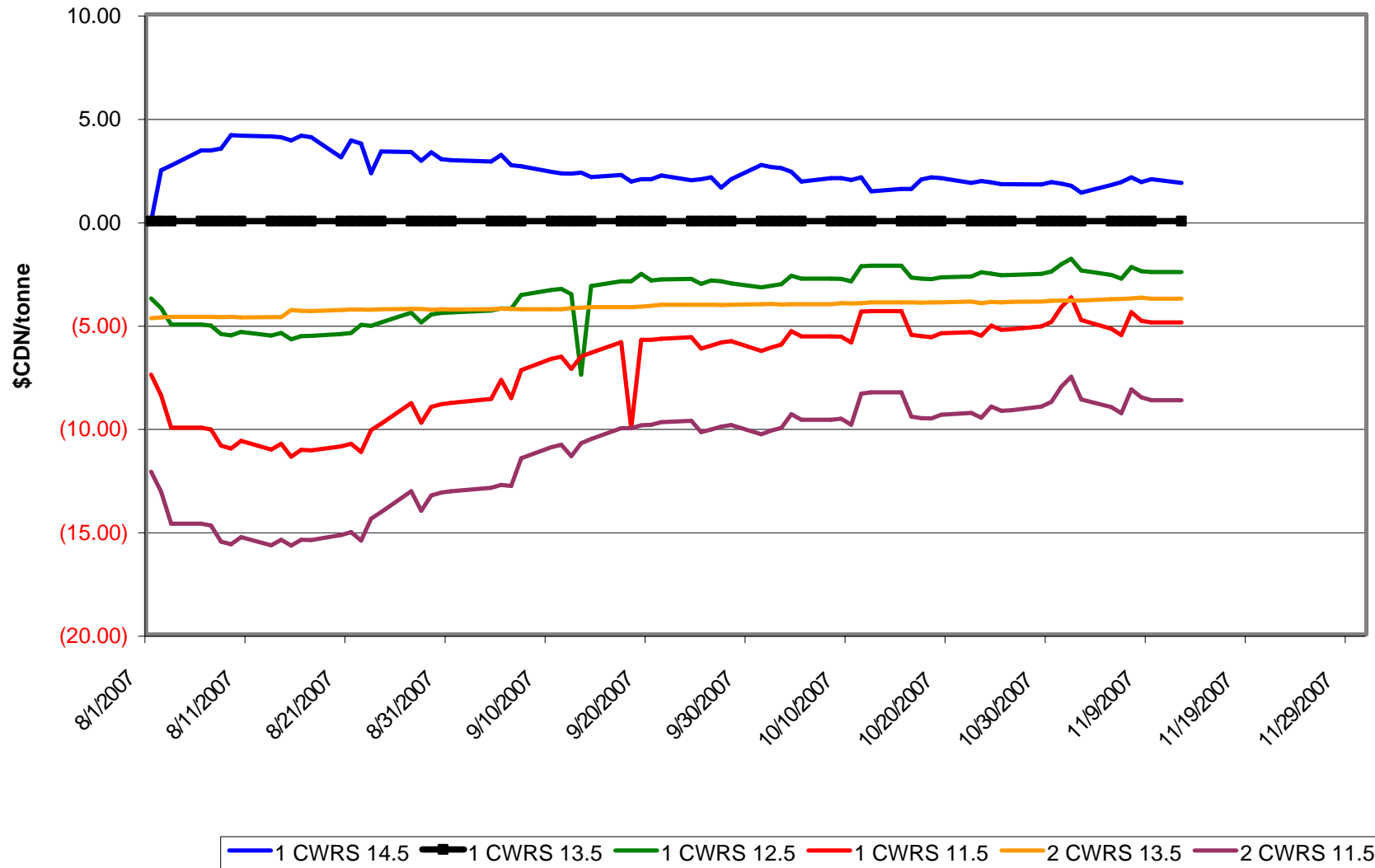


No. 1 CWSWS Daily Comparison of PRO, FPC & DPC values for 2007-08 crop year



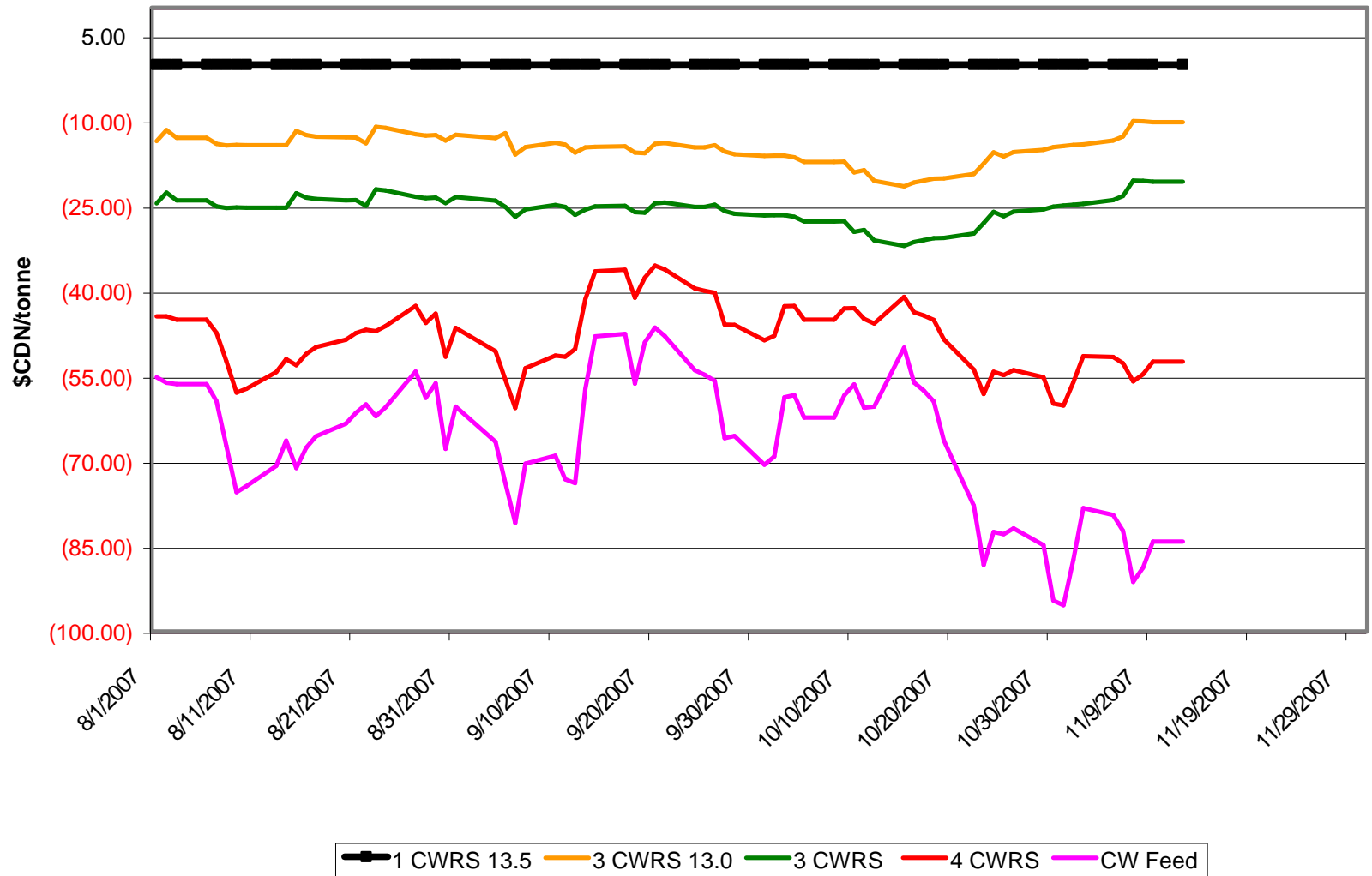
2007/08 DPC Spreads - CWRS No. 1 & No. 2

(reference/base grade of No. 1 CWRS 13.5%)



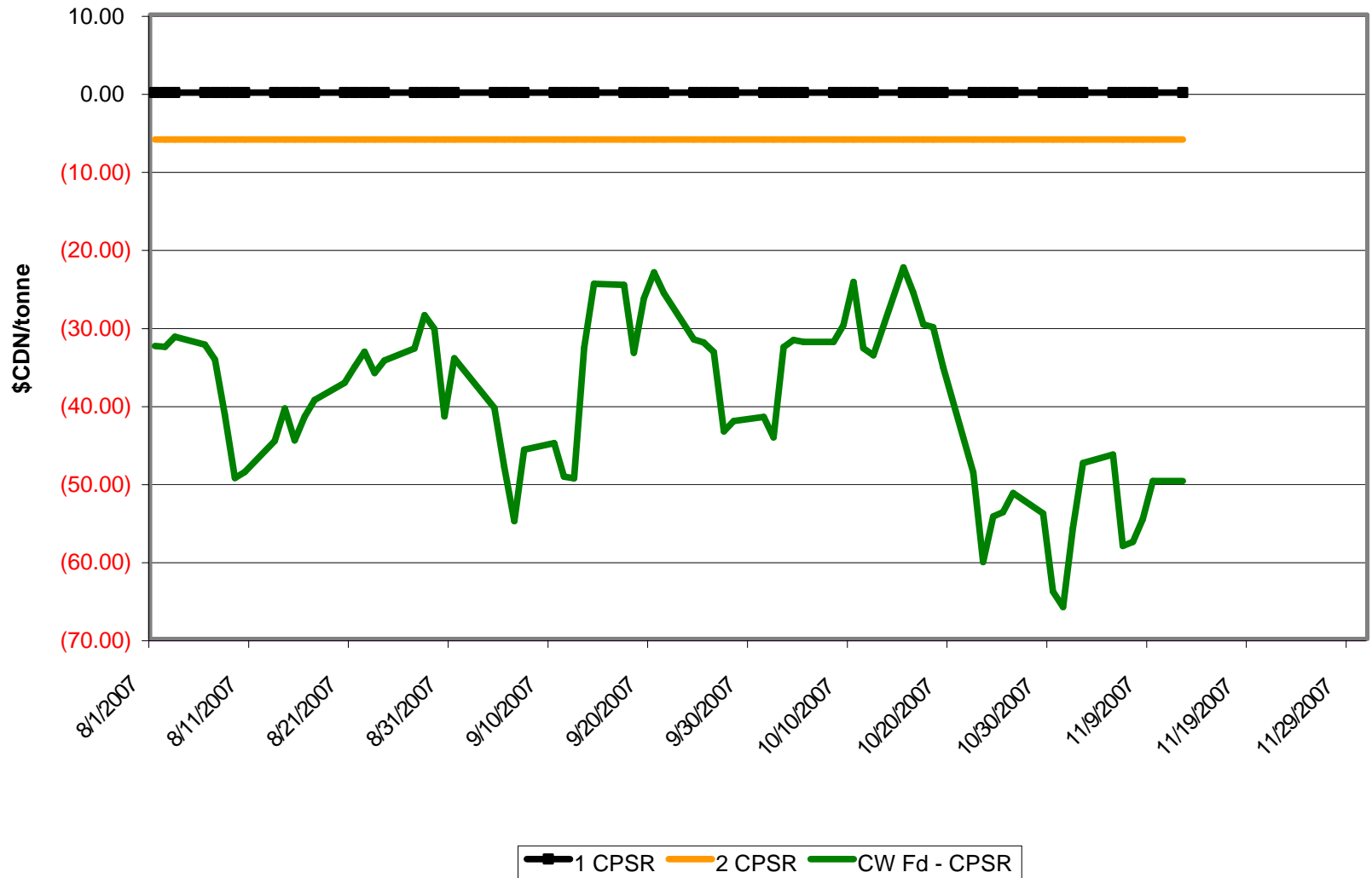
2007/08 DPC Spreads - CWRs No. 3, No. 4 & CW FD

(reference/base grade of No. 1 CWRs 13.5%)



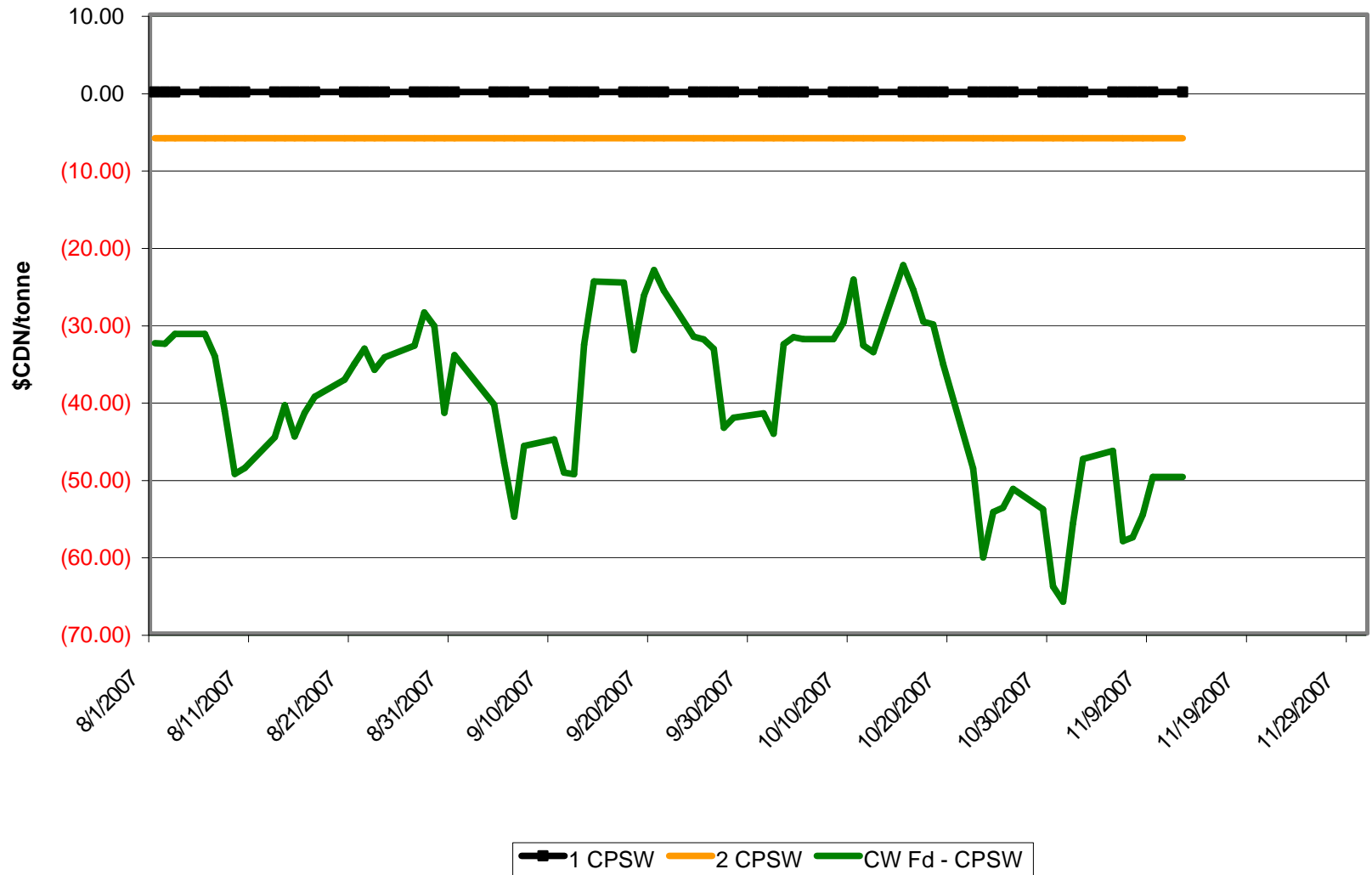
2007/08 DPC Spreads - CPSR No. 2 & Feed

(reference/base grade of No. 1 CPSR)



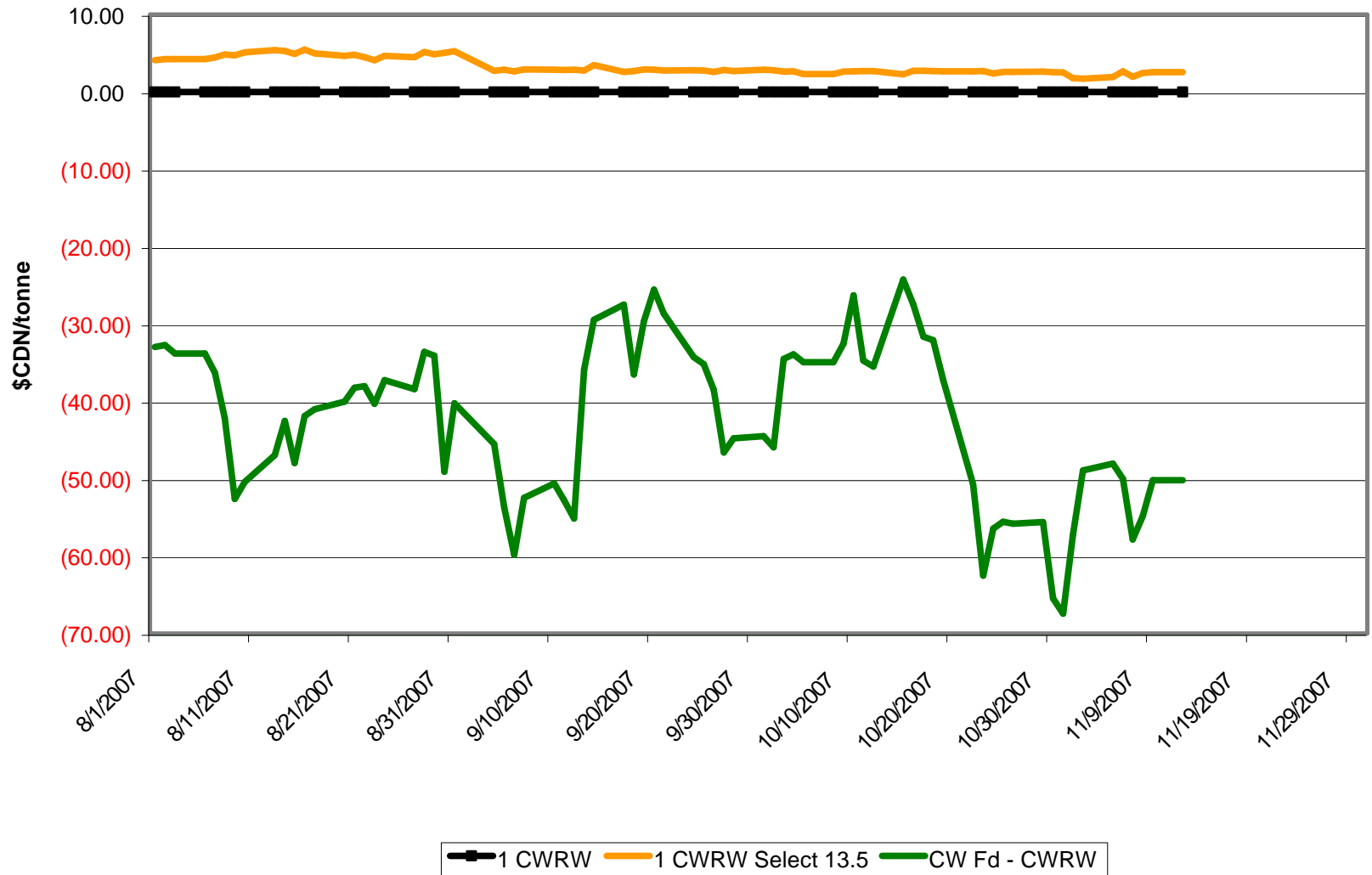
2007/08 DPC Spreads - CPSW No. 2 & Feed

(reference/base grade of No. 1 CPSW)



2007/08 DPC Spreads - CWRW No. 1 11.5% Sel & Feed

(reference/base grade of No. 1 CWRW)



2007/08 DPC Spreads - CWSWS No. 2 & No. 3

(reference/base grade of No. 1 CWSWS)

