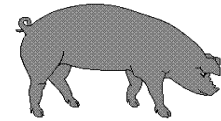




Hog Statistics at a Glance CANADA



For the Week Ending February 19, 2005

Federal Slaughter	weekly kill # head	CUMULATIVE TOTALS TO DATE		
		2005	2004	% chg
		'000 head		
West	174,307	1,218.0	1,159.0	5.1
Ontario	81,499	595.0	577.0	3.1
Quebec	167,843	1,201.0	1,107.0	8.5
Atlantic (estimated)	9,153	63.0	70.0	-10.0
CANADA	432,802	3,077.0	2,913.0	5.6
Pork Production (t)	37,870	269,238	254,014	6.0
Estimated Sow Slaughter	2,406	17,146	17,699	-3.1

Weekly Prices \$/kg (index 100)	2005			2004			% chg
	2005	2004	% chg	2005	2004	% chg	
Ontario	n/a	148.34					
Quebec	164.85	164.64	0.1				
Alberta	143.40	144.70	-0.9				
Manitoba*	152.00	147.00	3.4				
British Columbia	165.20	162.00	2.0				
Saskatchewan	132.10	140.20	-5.8				
Nova Scotia	165.36	144.77	14.2				
Prince Ed. Is.	149.83	146.68	2.1				
New Brunswick	160.86	139.97	14.9				

*estimate

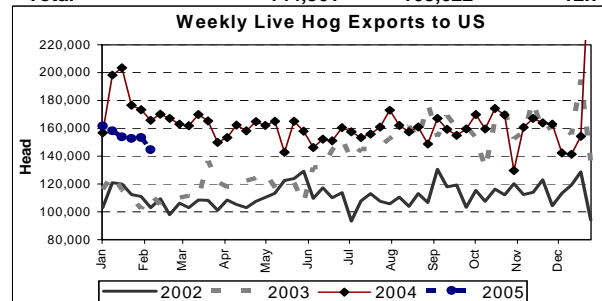
PORK EXPORTS YTD for the period of January to December

(Metric Tonnes)	2004	2003	% chg
FRESH, FROZEN AND PROCESSED PORK			
United States	409,386	450,921	(9.2)
Japan	203,851	191,896	6.2
Australia	35,179	36,058	(2.4)
Russia	21,211	24,718	(14.2)
Mexico	68,431	55,847	22.5
South Korea	32,995	29,943	10.2
China	36,826	25,897	42.2
Taiwan	23,373	21,396	9.2
Cuba	6,984	7,319	(4.6)
New Zealand	7,154	74,334	(90.4)
Other	82,992	6,015	1,279.8
Total	928,382	924,344	0.4

Source: STATISTICS CANADA

LIVE HOG EXPORTS TO U.S.

	YTD 05	YTD 04	% chg
HOGS (head)			
Barrows/Gilts/Sows	318,353	396,613	-19.7
Feeder Pigs	605,644	677,449	-10.6
Total	923,997	1,074,062	-14.0
Week Ending 05-02-12			
Barrows/Gilts/Sows	47,290	56,380	-16.1
Feeder Pigs	97,271	109,242	-11.0
Total	144,561	165,622	-12.7



Source: USDA-APHIS

IMPORTS YTD for the week ending 05-02-12

(Metric Tonnes) preliminary	2005	2004	% chg
FRESH & FROZEN PORK			
United States	8,740	9,062	-3.6
Denmark	123	73	68.5
Other	-	2	

PROCESSED & OTHER PORK	2005	2004	% chg
United States	1,463	1,402	4.4
Denmark	-	-	
Other	20	3	566.7
TOTAL IMPORTS	10,346	10,542	-1.9

Frozen Pork from the European Union:

The TRQ level has established for frozen meat of pork originating from EU countries, for the twelve month period August 1 to July 31, 2005. Imports in excess of 2,970,000 kg in the twelve month period are subject to a surtax in an amount equal to the value for the duty (100%) determined in accordance with the Customs Act.

	Permits issued as of February 19, 2005		
	2004/2005	2003/2004	% chg
Utilization (kg)	2,967,696	2,970,000	-0.1
Balance (kg)	2,304	-	
% Utilization	99.9%	100.0%	(0.1)

Prepared by: Red Meat Section, Agriculture and Agri-Food Canada

Contact: Patti Negrave (613) 759-6216 or see us at: <http://www.agr.ca/redmeat>