



# Hog Statistics at a Glance CANADA



For the Week Ending January 27, 2007

## Federal Slaughter

	weekly kill	CUMULATIVE TOTALS TO DATE		
	# head	2007 '000 head	2006 '000 head	% chg
West	164,618	629.0	678.0	-7.2
Ontario	87,487	335.0	325.0	3.1
Quebec	159,717	570.0	641.0	-11.1
Atlantic	7,289	30.0	33.0	-9.1
<b>CANADA</b>	<b>419,111</b>	<b>1,564.0</b>	<b>1,677.0</b>	<b>-6.7</b>
<b>Pork Production (t)</b>	<b>36,672</b>	<b>136,850</b>	<b>146,234</b>	<b>-6.4</b>
<b>Estimated Sow Slaughter</b>	<b>2,439</b>	<b>9,414</b>	<b>9,649</b>	<b>-2.4</b>

## Weekly Prices \$/100kg (index 100)

	2007	2006	% chg
	Ontario*	128.75	115.82
Quebec	126.04	123.89	1.7
Alberta	127.10	111.40	14.1
Manitoba*	134.00	118.00	13.6
British Columbia	140.10	128.30	9.2
Saskatchewan	126.20	111.60	13.1
Nova Scotia	122.50	120.90	1.3
Prince Ed. Is.	124.43	113.09	10.0
New Brunswick	118.00	116.40	1.4

\*estimate

## PORK EXPORTS

YTD for the period of January - November

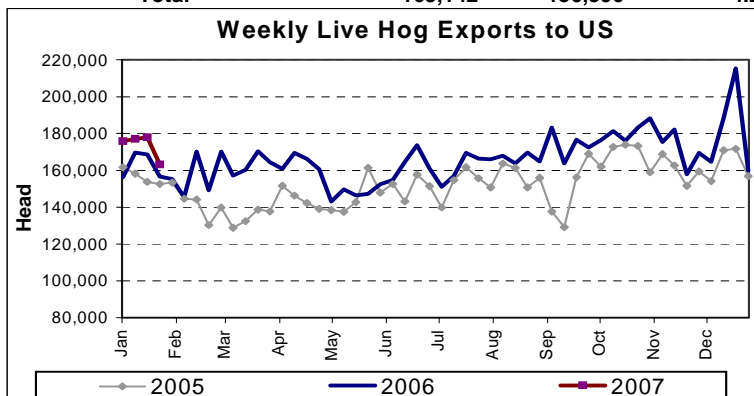
(Metric Tonnes)

FRESH, FROZEN AND PROCESSED PORK	2006	2005	% chg
United States	332,267	351,454	(5.5)
Japan	201,390	249,221	(19.2)
Australia	34,569	32,568	6.1
Russia	84,734	31,590	168.2
Mexico	49,520	57,795	(14.3)
South Korea	67,844	55,246	22.8
China	39,670	42,085	(5.7)
Taiwan	11,402	17,486	(34.8)
Cuba	6,469	5,365	20.6
New Zealand	8,583	6,504	32.0
Other	117,810	93,723	25.7
<b>Total</b>	<b>954,258</b>	<b>943,037</b>	<b>1.2</b>

Source: STATISTICS CANADA

## LIVE HOG EXPORTS TO U.S.

	YTD 07	YTD 06	% chg
<b>HOGS (head)</b>			
Barrows/Gilts/Sows	236,867	221,626	6.9
Feeder Pigs	457,316	429,871	6.4
<b>Total</b>	<b>694,183</b>	<b>651,497</b>	<b>6.6</b>
<b>Week Ending 07-01-27</b>			
Barrows/Gilts/Sows	52,333	48,654	7.6
Feeder Pigs	110,809	107,942	2.7
<b>Total</b>	<b>163,142</b>	<b>156,596</b>	<b>4.2</b>



Source: USDA-APHIS

## IMPORTS

YTD for the week ending 07-01-20

(Metric Tonnes) preliminary

FRESH & FROZEN PORK	2007	2006	% chg
United States	4,481	5,176	-13.4
Denmark	75	-	
Other	-	-	

## PROCESSED & OTHER PORK

	2007	2006	% chg
United States	821	688	19.3
Denmark	-	-	
Other	24	45	-46.7
<b>TOTAL IMPORTS</b>	<b>5,401</b>	<b>5,909</b>	<b>-8.6</b>

## Frozen Pork from the European Union:

The TRQ level has established for frozen meat of pork originating from EU countries, for the twelve month period August 1 to July 31, 2007. Imports in excess of 2,970,000 kg in the twelve month period are subject to a surtax in an amount equal to the value for the duty (100%) determined in accordance with the Customs Act.

	Permits issued as of January 27, 2007		
	2006/2007	2005/2006	% chg
Utilization (kg)	2,970,000	2,970,000	0.0
Balance (kg)	-	-	
% Utilization	100.0%	100.0%	0.0

Prepared by: Red Meat Section, Agriculture and Agri-Food Canada

Contact: Patti Negrave (613) 759-6216 or see us at: <http://www.agr.ca/redmeat>



# Hog Statistics at a Glance CANADA

## Canadian Hog Slaughter by Province of Origin

Total Slaughter Year to Date January 27, 2007

Week ending January 27, 2007

	2007	2006	% chg	2007	2006	% chg
British Columbia	16,275	17,169	-5.2	3,949	4,843	-18.5
Alberta	264,227	311,361	-15.1	67,852	79,725	-14.9
Saskatchewan	87,178	82,678	5.4	23,285	21,383	8.9
Manitoba	293,906	299,767	-2.0	78,336	77,129	1.6
Ontario	422,086	417,915	1.0	110,701	107,821	2.7
Quebec	527,540	584,693	-9.8	148,214	146,145	1.4
New Brunswick	9,472	12,553	-24.5	2,597	3,086	-15.8
Nova Scotia	12,103	15,167	-20.2	2,915	3,698	-21.2
Prince Edward Island	15,046	15,839	-5.0	3,472	3,951	-12.1
<b>CANADA</b>	<b>1,647,833</b>	<b>1,757,142</b>	<b>-6.2</b>	<b>441,321</b>	<b>447,781</b>	<b>-1.4</b>

## UNITED STATES

Year To Date for the Week Ending January 27, 2007

### Supply Summary

	2007	2006	% chg
Slaughter ('000 head)	8,103	8,030	0.9
Slaughter for the week	2,083	2,029	2.7
Avg Dressed Wt (lbs)	204	204	0.0
Pork Produced (mil lbs)	1,648	1,640	0.5

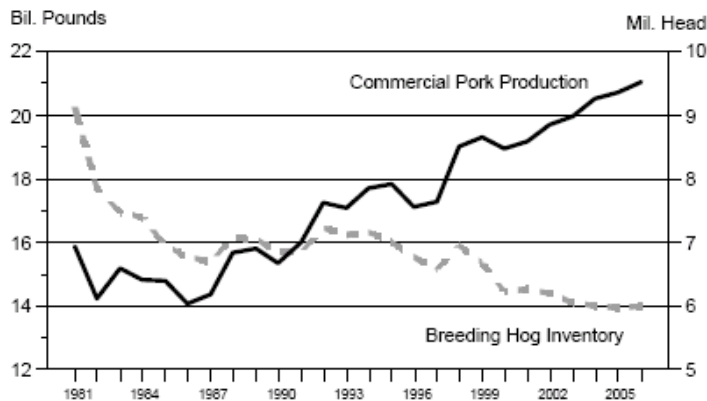
Source: USDA-APHIS

### Weekly US Prices (\$/cwt)

	2007	2006	% chg
South St. Joseph	43.75	37.75	15.9
Sioux Falls	47.50	39.50	20.3
Oklahoma City	39.00	35.00	11.4
National Cost	59.20	53.76	10.1

(51-54% Lean Yield Basis)

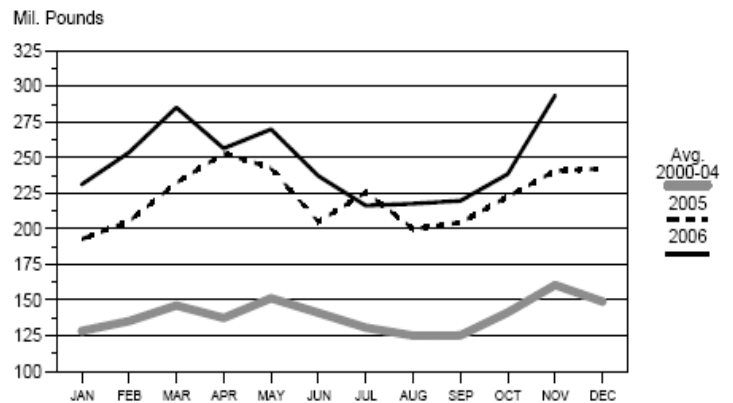
### U.S. PORK PRODUCTION vs BREEDING HOG INVENTORY



Livestock Marketing Information Center

M-S-24  
11/27/06

### U.S. PORK EXPORTS, monthly carcass weight



Livestock Marketing Information Center

I-N-30  
01/11/07

Prepared by: Red Meat Section, Agriculture and Agri-Food Canada

Contact: Patti Negrave (613) 759-6216 or see us at: <http://www.agr.ca/redmeat>