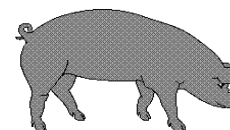




Hog Statistics at a Glance CANADA



For the Week Ending January 28, 2006

Federal Slaughter

	weekly kill # head	CUMULATIVE TOTALS TO DATE		
		2006 '000 head	2005 '000 head	% chg
West	174,121	678.0	693.0	-2.2
Ontario	81,097	325.0	349.0	-6.9
Quebec	163,158	641.0	703.0	-8.8
Atlantic	7,896	33.0	36.0	-8.3
CANADA	426,272	1,677.0	1,781.0	-5.8
Pork Production (t)	37,299	146,738	155,303	-5.5
Estimated Sow Slaughter	2,431	9,647	10,067	-4.2

Weekly Prices \$/kg (index 100)

	2006	2005	% chg
Ontario*	118.56	162.30	-27.0
Quebec	123.89	173.21	-28.5
Alberta	111.40	n/a	
Manitoba*	118.00	169.00	-30.2
British Columbia	128.30	181.20	-29.2
Saskatchewan	111.60	150.20	-25.7
Nova Scotia	120.90	163.03	-25.8
Prince Ed. Is.	113.09	163.77	-30.9
New Brunswick	116.40	158.53	-26.6

*estimate

PORK EXPORTS

YTD for the period of January to November

(Metric Tonnes)

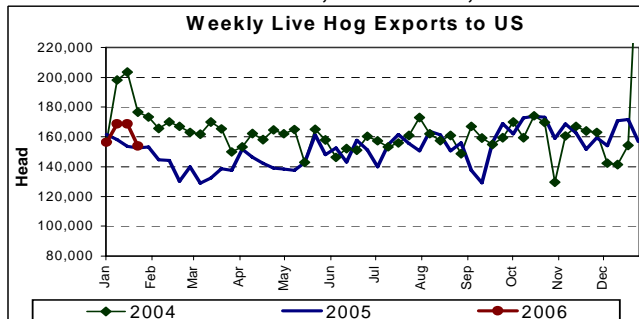
FRESH, FROZEN AND PROCESSED PORK

	2005	2004	% chg
United States	351,381	376,947	(6.8)
Japan	249,144	187,793	32.7
Australia	32,568	32,200	1.1
Russia	31,566	19,024	65.9
Mexico	57,068	63,332	(9.9)
South Korea	55,216	29,111	89.7
China	41,894	34,000	23.2
Taiwan	17,486	22,196	(21.2)
Cuba	5,365	6,255	(14.2)
New Zealand	6,504	6,721	(3.2)
Other	93,615	76,849	21.8
Total	941,807	854,428	10.2

Source: STATISTICS CANADA

LIVE HOG EXPORTS TO U.S.

	YTD 06	YTD 05	% chg
HOGS (head)			
Barrows/Gilts/Sows	218,075	222,804	-2.1
Feeder Pigs	429,471	403,228	6.5
Total	647,546	626,032	3.4
Week Ending 06-01-28			
Barrows/Gilts/Sows	46,375	48,775	-4.9
Feeder Pigs	107,542	103,741	3.7
Total	153,917	152,516	0.9



Source: USDA-APHIS

IMPORTS

YTD for the week ending 06-01-21

(Metric Tonnes) preliminary

FRESH & FROZEN PORK

	2006	2005	% chg
United States	4,406	4,312	2.2
Denmark (REVISIONS)	-	75	
Other	-	-	

PROCESSED & OTHER PORK

	2006	2005	% chg
United States	502	767	-34.6
Denmark	-	-	
Other	7	15	-53.3
TOTAL IMPORTS	4,915	5,169	-4.9

Frozen Pork from the European Union:

The TRQ level has established for frozen meat of pork originating from EU countries, for the twelve month period August 1 to July 31, 2006. Imports in excess of 2,970,000 kg in the twelve month period are subject to a surtax in an amount equal to the value for the duty (100%) determined in accordance with the Customs Act.

	Permits issued as of January 28, 2006		
	2005/2006	2004/2005	% chg
Utilization (kg)	2,969,900	1,917,961	54.8
Balance (kg)	100	1,052,039	-100.0
% Utilization	100.0%	64.6%	54.8

Prepared by: Red Meat Section, Agriculture and Agri-Food Canada

Contact: Patti Negrave (613) 759-6216 or see us at: <http://www.agr.ca/redmeat>



Hog Statistics at a Glance CANADA

Canadian Hog Slaughter by Province of Origin

Total Slaughter Year to Date January 28, 2006

	2006	2005	% chg
British Columbia	17,169	17,871	-3.9
Alberta	313,287	273,366	14.6
Saskatchewan	82,678	110,787	-25.4
Manitoba	301,527	322,158	-6.4
Ontario	422,333	432,980	-2.5
Quebec	586,911	653,588	-10.2
New Brunswick	12,553	12,260	2.4
Nova Scotia	14,823	15,665	-5.4
Prince Edward Island	15,757	16,224	-2.9
CANADA	1,767,038	1,854,899	-4.7

Week ending January 28, 2006

	2006	2005	% chg
British Columbia	4,843	4,407	9.9
Alberta	80,206	70,004	14.6
Saskatchewan	21,383	28,367	-24.6
Manitoba	77,569	83,263	-6.8
Ontario	108,925	106,070	2.7
Quebec	146,699	152,841	-4.0
New Brunswick	3,086	2,858	8.0
Nova Scotia	3,612	3,587	0.7
Prince Edward Island	3,869	3,698	4.6
CANADA	450,192	455,095	-1.1

UNITED STATES

Year To Date for the Week Ending January 28, 2006

Supply Summary

	2006	2005	% chg
Slaughter ('000 head)	8,030	8,001	0.4
Slaughter for the week	2,033	1,999	1.7
Avg Dressed Wt (lbs)	205	202	1.5
Pork Produced (mil lbs)	1,641	1,611	1.8

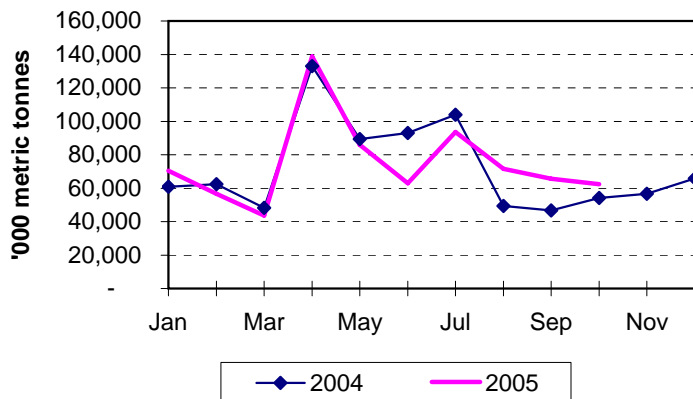
Source: USDA-APHIS

Weekly US Prices (\$/cwt)

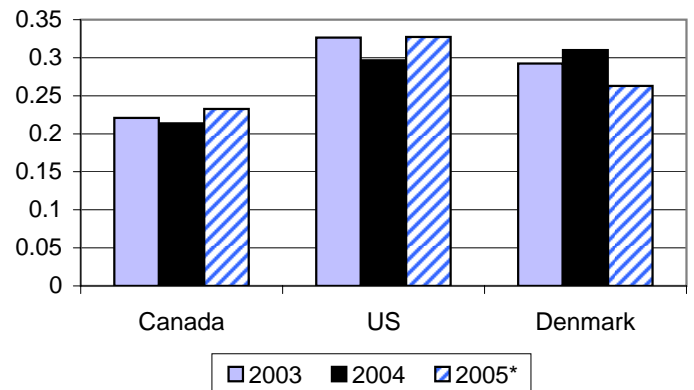
	2006	2005	% chg
South St. Joseph	37.75	51.50	-26.7
Sioux Falls	39.50	51.60	-23.4
Oklahoma City	35.00	47.00	-25.5
National Cost	53.76	73.47	-26.8

(51-54% Lean Yield Basis)

Total Japanese Pork Imports



Market Share of Japanese Pork Imports



*2005 data to the end of October