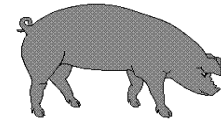




Hog Statistics at a Glance CANADA



For the Week Ending June 18, 2005

Federal Slaughter	weekly kill # head	CUMULATIVE TOTALS TO DATE		
		2005	2004	% chg
		'000 head		
West	168,122	4,082.0	3,902.0	4.6
Ontario	72,101	1,933.0	1,912.0	1.1
Quebec	147,249	3,816.0	3,774.0	1.1
Atlantic	8,361	206.0	229.0	-10.0
CANADA	395,833	10,037.0	9,817.0	2.2
Pork Production (t)	34,635	878,238	856,042	2.6
Estimated Sow Slaughter	2,174	56,555	60,089	-5.9

Weekly Prices \$/c/kg (index 100)	2005		
	2005	2004	% chg
Ontario*	152.52	193.27	-21.1
Quebec	157.57	192.05	-18.0
Alberta	149.42	185.29	-19.4
Manitoba*	157.00	188.34	-16.6
British Columbia	161.90	198.00	-18.2
Saskatchewan	141.70	176.20	-19.6
Nova Scotia	156.93	200.57	-21.8
Prince Ed. Is.	152.48	186.72	-18.3
New Brunswick	152.43	196.07	-22.3

*estimate

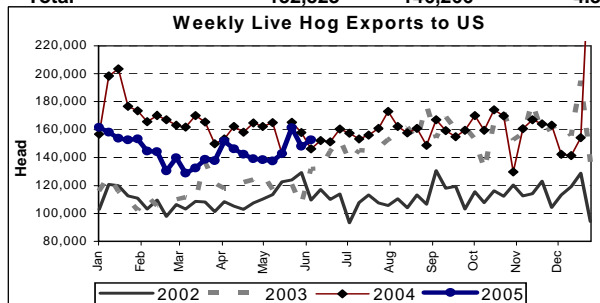
PORK EXPORTS YTD for the period of January to April 30, 2005

(Metric Tonnes)	2005	2004	% chg
FRESH, FROZEN AND PROCESSED PORK			
United States	121,964	133,757	(8.8)
Japan	96,134	72,703	32.2
Australia	17,303	11,540	49.9
Russia	8,257	4,621	78.7
Mexico	19,908	20,571	(3.2)
South Korea	21,035	9,803	114.6
China	13,686	9,289	47.3
Taiwan	7,065	8,291	(14.8)
Cuba	738	3,496	(78.9)
New Zealand	1,759	1,503	17.0
Other	32,736	28,681	14.1
Total	340,585	304,255	11.9

Source: STATISTICS CANADA

LIVE HOG EXPORTS TO U.S.

	YTD 05	YTD 04	% chg
HOGS (head)			
Barrows/Gilts/Sows	1,078,907	1,281,474	-15.8
Feeder Pigs	2,256,593	2,518,084	-10.4
Total	3,335,500	3,799,558	-12.2
Week Ending 05-06-11			
Barrows/Gilts/Sows	51,640	46,713	10.5
Feeder Pigs	100,883	99,553	1.3
Total	152,523	146,266	4.3



Source: USDA-APHIS

IMPORTS YTD for the week ending 05-06-11

(Metric Tonnes) preliminary	2005	2004	% chg
FRESH & FROZEN PORK			
United States	35,534	32,345	9.9
Denmark	274	275	-0.4
Other	27	3	

PROCESSED & OTHER PORK

	2005	2004	% chg
United States	6,701	6,772	-1.0
Denmark	-	-	
Other	47	68	-30.9
TOTAL IMPORTS	42,583	39,463	7.9

Frozen Pork from the European Union:

The TRQ level has established for frozen meat of pork originating from EU countries, for the twelve month period August 1 to July 31, 2005. Imports in excess of 2,970,000 kg in the twelve month period are subject to a surtax in an amount equal to the value for the duty (100%) determined in accordance with the Customs Act.

	Permits issued as of June 18, 2005		
	2004/2005	2003/2004	% chg
Utilization (kg)	2,969,899	2,970,000	0.0
Balance (kg)	101	-	
% Utilization	100.0%	100.0%	(0.0)

Prepared by: Red Meat Section, Agriculture and Agri-Food Canada

Contact: Patti Negrave (613) 759-6216 or see us at: <http://www.agr.ca/redmeat>



Hog Statistics at a Glance CANADA

Canadian Hog Slaughter by Province of Origin

	Total Slaughter Year to Date June 18, 2005			Week ending June 18, 2005		
	2005	2004	% chg	2005	2004	% chg
British Columbia	106,315	113,728	-6.5	4,190	4,699	-10.8
Alberta	1,612,774	1,588,174	1.5	68,265	66,617	2.5
Saskatchewan	608,639	616,993	-1.4	22,031	27,334	-19.4
Manitoba	1,937,333	1,787,701	8.4	80,328	74,764	7.4
Ontario	2,456,102	2,399,988	2.3	94,909	102,898	-7.8
Quebec	3,471,490	3,493,426	-0.6	132,674	145,023	-8.5
New Brunswick	72,345	73,695	-1.8	2,642	3,246	-18.6
Nova Scotia	82,043	92,382	-11.2	3,501	4,007	-12.6
Prince Edward Island	99,782	105,295	-5.2	4,194	4,377	-4.2
CANADA	10,446,823	10,271,382	1.7	412,734	432,965	-4.7

UNITED STATES

Year To Date for the Week Ending June 18, 2005

Supply Summary				Weekly US Prices (\$/cwt)			
	2005	2004	% chg		2005	2004	% chg
Slaughter ('000 head)	46,685	46,935	-0.5	South St. Joseph	47.75	54.75	-12.8
Slaughter for the week	1,917	1,908	0.5	Sioux Falls	50.31	58.31	-13.7
Avg Dressed Wt (lbs)	202	197	2.5	Oklahoma City	46.00	53.17	-13.5
Pork Produced (mil lbs)	9,394	9,354	0.4	National Cost	68.54	76.69	-10.6
Source: USDA-APHIS				(51-54% Lean Yield Basis)			

LEADING MARKETS FOR U.S. PORK PLUS PORK VARIETY MEAT EXPORTS (January-April 2005)

COUNTRY	Year to date Quantity (Metric Tons)			COUNTRY	Year to date Quantity (Metric Tons)		
	1/04 - 4/04	1/05 - 4/05	% Chg		1/04 - 4/04	1/05 - 4/05	% Chg
Japan	104,332	123,575	18.4	Taiwan	17,415	7,426	-57.4
Mexico	110,200	103,058	-6.5	Central & South America	7,267	7,032	-3.2
Canada	41,406	39,091	-5.6	Korea	9,121	26,024	185.3
China	11,924	26,200	119.7	Caribbean	2,897	6,204	114.2
Hong Kong	8,480	2,122	-75.0	Eastern Europe	1,844	9,804	431.7
Russia	5,782	13,488	133.3	World Total	328,695	380,088	15.6
European Union	3,773	3,130	-17.0				

Source: FAS, USDA