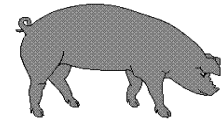




Hog Statistics at a Glance CANADA



For the Week Ending March 5, 2005

Federal Slaughter	weekly kill # head	CUMULATIVE TOTALS TO DATE		
		2005	2004	% chg
		'000 head		
West	173,732	1,568.0	1,491.0	5.2
Ontario	80,038	758.0	740.0	2.4
Quebec	162,032	1,527.0	1,437.0	6.3
Atlantic	8,312	79.0	90.0	-12.2
CANADA	424,114	3,932.0	3,758.0	4.6
Pork Production (t)	37,110	344,050	327,698	5.0
Estimated Sow Slaughter	2,190	21,702	22,938	-5.4

Weekly Prices \$/kg (index 100)	2005		
	2005	2004	% chg
Ontario*	156.15	154.77	0.9
Quebec	169.45	163.86	3.4
Alberta	N/A	140.80	
Manitoba*	159.00	150.00	6.0
British Columbia	171.40	159.90	7.2
Saskatchewan	144.70	136.60	5.9
Nova Scotia	158.02	154.92	2.0
Prince Ed. Is.	156.33	151.10	3.5
New Brunswick	153.52	150.42	2.1

*estimate

PORK EXPORTS YTD for the period of January to December

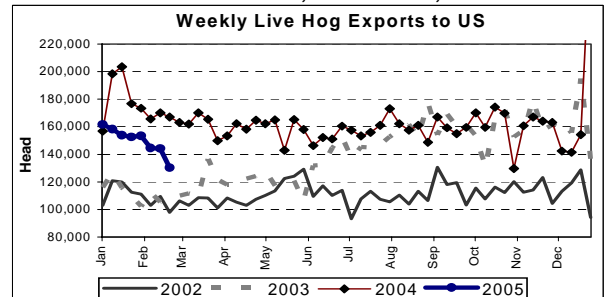
(Metric Tonnes)

FRESH, FROZEN AND PROCESSED PORK	2004	2003	% chg
United States	409,386	450,921	(9.2)
Japan	203,851	191,896	6.2
Australia	35,179	36,058	(2.4)
Russia	21,211	24,718	(14.2)
Mexico	68,431	55,847	22.5
South Korea	32,995	29,943	10.2
China	36,826	25,897	42.2
Taiwan	23,373	21,396	9.2
Cuba	6,984	7,319	(4.6)
New Zealand	7,154	74,334	(90.4)
Other	82,992	6,015	1,279.8
Total	928,382	924,344	0.4

Source: STATISTICS CANADA

LIVE HOG EXPORTS TO U.S.

	YTD 05	YTD 04	% chg
HOGS (head)			
Barrows/Gilts/Sows	410,866	506,640	-18.9
Feeder Pigs	787,644	904,699	-12.9
Total	1,198,510	1,411,339	-15.1
Week Ending 05-02-26			
Barrows/Gilts/Sows	46,162	56,907	-18.9
Feeder Pigs	84,124	110,210	-23.7
Total	130,286	167,117	-22.0



Source: USDA-APHIS

IMPORTS YTD for the week ending 05-02-26

(Metric Tonnes) preliminary

FRESH & FROZEN PORK	2005	2004	% chg
United States	11,801	11,869	-0.6
Denmark	145	124	16.9
Other	-	2	

PROCESSED & OTHER PORK	2005	2004	% chg
United States	1,936	1,791	8.1
Denmark	-	-	
Other	20	4	400.0
TOTAL IMPORTS	13,902	13,790	0.8

Frozen Pork from the European Union:

The TRQ level has established for frozen meat of pork originating from EU countries, for the twelve month period August 1 to July 31, 2005. Imports in excess of 2,970,000 kg in the twelve month period are subject to a surtax in an amount equal to the value for the duty (100%) determined in accordance with the Customs Act.

	Permits issued as of March 5, 2005		
	2004/2005	2003/2004	% chg
Utilization (kg)	2,968,724	2,970,000	0.0
Balance (kg)	1,276	-	
% Utilization	100.0%	100.0%	(0.0)

Prepared by: Red Meat Section, Agriculture and Agri-Food Canada

Contact: Patti Negrave (613) 759-6216 or see us at: <http://www.agr.ca/redmeat>