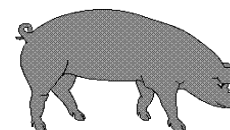




Hog Statistics at a Glance CANADA



For the Week Ending May 5, 2007

Federal Slaughter

	weekly kill # head	CUMULATIVE TOTALS TO DATE		
		2007	2006	% chg
		'000 head		
West	156,741	2,858.0	3,030.0	-5.7
Ontario	80,992	1,500.0	1,412.0	6.2
Quebec	151,604	2,683.0	2,761.0	-2.8
Atlantic	6,457	129.0	144.0	-10.4
CANADA	395,794	7,170.0	7,347.0	-2.4
Pork Production (t)	34,632	630,960	642,863	-1.9
*Est Sow/Boar Slaughter	2,561	42,075	49,365	-14.8

*revised includes fed & prov

Weekly Prices \$/100kg (index 100)

	2007	2006	% chg
	Ontario*	148.09	128.38
Quebec	147.51	130.18	13.3
Alberta	139.60	126.44	10.4
Manitoba*	150.00	138.00	8.7
British Columbia	153.40	144.90	5.9
Saskatchewan	143.20	126.30	13.4
Nova Scotia	143.44	123.82	15.8
Prince Ed. Is.	136.46	116.26	17.4
New Brunswick	138.94	119.32	16.4

*estimate

PORK EXPORTS

YTD for the period of January 1 - February 28

(Metric Tonnes)

FRESH, FROZEN AND PROCESSED PORK

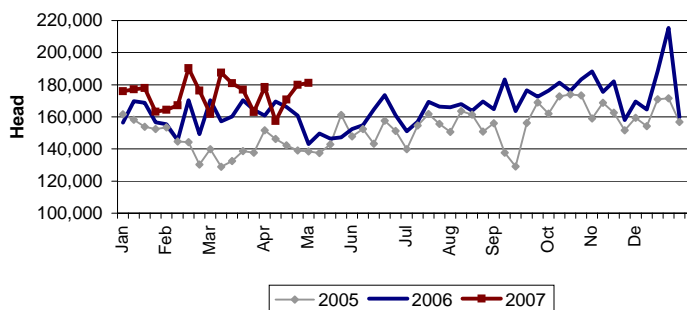
	2007	2006	% chg
United States	55,651	59,979	(7.2)
Japan	38,102	44,967	(15.3)
Australia	8,045	8,050	(0.1)
Russia	15,038	11,788	27.6
Mexico	7,431	8,088	(8.1)
South Korea	10,498	11,414	(8.0)
China	6,826	7,620	(10.4)
Taiwan	1,518	2,696	(43.7)
Cuba	1,046	1,928	(45.7)
New Zealand	1,469	932	57.6
Other	14,835	17,472	(15.1)
Total	160,459	174,934	(8.3)

Source: STATISTICS CANADA

LIVE HOG EXPORTS TO U.S.

	YTD 07	YTD 06	% chg
HOGS (head)			
Barrows/Gilts/Sows	960,997	876,881	9.6
Feeder Pigs	2,169,040	2,017,687	7.5
Total	3,130,037	2,894,568	8.1
Week Ending 07-05-07			
Barrows/Gilts/Sows	50,176	44,383	13.1
Feeder Pigs	130,887	98,698	32.6
Total	181,063	143,081	26.5

WEEKLY LIVE HOG EXPORTS TO US



IMPORTS

YTD for the week ending 07-04-28

(Metric Tonnes) preliminary

FRESH & FROZEN PORK

	2007	2006	% chg
United States	26,862	29,567	-9.1
Denmark	434	-	
Other	-	-	

	2007	2006	% chg
United States	6,497	6,219	4.5
Denmark	-	-	
Other	53	75	-29.3
TOTAL IMPORTS	33,846	35,861	-5.6

Frozen Pork from the European Union:

The TRQ level has established for frozen meat of pork originating from EU countries, for the twelve month period August 1 to July 31, 2007. Imports in excess of 2,970,000 kg in the twelve month period are subject to a surtax in an amount equal to the value for the duty (100%) determined in accordance with the Customs Act.

	Permits issued as of May 5, 2007		
	2006/2007	2005/2006	% chg
Utilization (kg)	2,966,125	2,970,000	-0.1
Balance (kg)	3,875	-	
% Utilization	99.9%	100.0%	(0.1)

Prepared by: Red Meat Section, Agriculture and Agri-Food Canada

Contact: Patti Negrave (613) 759-6216 or see us at: <http://www.agr.ca/redmeat>