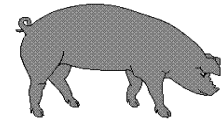




# Hog Statistics at a Glance CANADA



For the Week Ending November 13, 2004

Federal Slaughter	weekly kill # head	CUMULATIVE TOTALS TO DATE		
		2004	2003	% chg
		'000 head		
West <b>ESTIMATED</b>	<b>150,866</b>	<b>7,477.0</b>	7,414.0	0.8
Ontario	66,633	3,697.0	3,731.0	-0.9
Quebec	184,428	7,359.0	7,160.0	2.8
Atlantic	8,367	427.0	449.0	-4.9
<b>CANADA</b>	<b>410,294</b>	<b>18,960.0</b>	<b>18,754.0</b>	<b>1.1</b>
<b>Pork Production (t)</b>	<b>35,901</b>	<b>1,659,000</b>	<b>1,635,349</b>	<b>1.4</b>
Estimated Sow Slaughter	2,360	108,011	138,345	-21.9

Weekly Prices \$/kg (index 100)		2004	2003	% chg
		Ontario 102.5%	1.67	1.22
Quebec	1.58	1.19	32.8	
Alberta	1.59	1.16	37.1	
Manitoba*	1.60	1.27	26.0	
British Columbia	1.78	1.31	35.9	
Saskatchewan	1.49	1.07	39.3	
Nova Scotia	1.48	1.17	26.5	
Prince Ed. Is.	1.61	1.13	42.5	
New Brunswick	1.44	1.13	27.4	

\*estimate

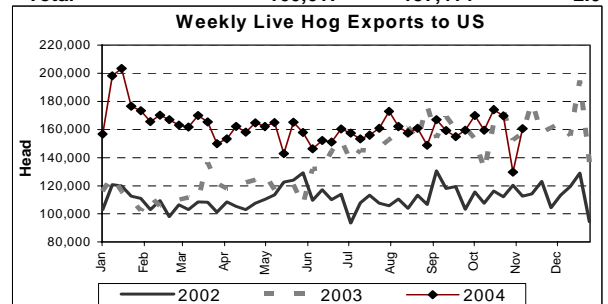
## PORK EXPORTS YTD for the period of January to September

(Metric Tonnes)	2004	2003	% chg
<b>FRESH, FROZEN AND PROCESSED PORK</b>			
United States	309,725	336,402	(7.9)
Japan	159,038	148,929	6.8
Australia	25,055	26,779	(6.4)
Russia	9,907	20,090	(50.7)
Mexico	52,447	42,051	24.7
South Korea	22,689	22,804	(0.5)
China	26,956	19,319	39.5
Taiwan	17,012	14,352	18.5
Cuba	5,439	5,149	5.6
New Zealand	5,393	5,540	(2.7)
Other	84,326	50,280	67.7
<b>Total</b>	<b>717,987</b>	<b>691,695</b>	<b>3.8</b>

Source: STATISTICS CANADA

## LIVE HOG EXPORTS TO U.S.

	YTD 04	YTD 03	% chg
<b>HOGS (head)</b>			
Barrows/Gilts/Sows	2,448,291	1,963,884	24.7
Feeder Pigs	4,849,221	4,140,249	17.1
<b>Total</b>	<b>7,297,512</b>	<b>6,104,133</b>	<b>19.6</b>
<b>Week Ending 04-11-06</b>			
Barrows/Gilts/Sows	62,030	63,729	-2.7
Feeder Pigs	98,587	93,685	5.2
<b>Total</b>	<b>160,617</b>	<b>157,414</b>	<b>2.0</b>



## IMPORTS YTD for the week ending November 6, 2004

(Metric Tonnes) preliminary	2004	2003	% chg
<b>FRESH &amp; FROZEN PORK</b>			
United States	58,969	51,969	13.5
Denmark	881	3,639	-75.8
Other	53	1,367	-96.1

## PROCESSED & OTHER PORK

	2004	2003	% chg
United States	11,878	9,162	29.6
Denmark	-	6	
Other	156	133	17.3
<b>TOTAL IMPORTS</b>	<b>71,937</b>	<b>66,276</b>	<b>8.5</b>

## Frozen Pork from the European Union:

The TRQ level has established for frozen meat of pork originating from EU countries, for the twelve month period August 1 to July 31, 2005. Imports in excess of 2,970,000 kg in the twelve month period are subject to a surtax in an amount equal to the value for the duty (100%) determined in accordance with the Customs Act.

	Permits issued as of November 13, 2004		
	2004/2005	2003/2004	% chg
Utilization (kg)	823,972	2,970,000	-72.3
Balance (kg)	2,146,028	-	
% Utilization	27.7%	100.0%	(72.3)

Prepared by: Red Meat Section, Agriculture and Agri-Food Canada

Contact: Patti Negrave (613) 759-6216 or see us at: <http://www.agr.ca/redmeat>