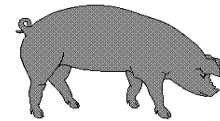




Hog Statistics at a Glance CANADA



For the Week Ending October 16, 2004

Federal Slaughter	weekly kill # head	CUMULATIVE TOTALS TO DATE		
		2004	2003	% chg
		'000 head		
West	140,178	6,800.0	6,753.0	0.7
Ontario	71,500	3,399.0	3,387.0	0.4
Quebec	147,505	6,634.0	6,467.0	2.6
Atlantic	8,454	392.0	409.0	-4.2
CANADA	367,637	17,225.0	17,016.0	1.2
Pork Production (t)	32,168	1,507,188	1,483,795	1.6
Estimated Sow Slaughter	1,977	99,387	126,961	-21.7

Weekly Prices \$/kg (index 100)		2004	2003	% chg
		Ontario 102.5%	1.71	1.33
Quebec	1.61	1.28	25.8	
Alberta	1.56	1.23	26.8	
Manitoba*	1.65	1.34	23.1	
British Columbia	1.84	1.39	32.4	
Saskatchewan	1.46	1.16	25.9	
Nova Scotia	1.79	1.41	27.0	
Prince Ed. Is.	1.67	1.29	29.5	
New Brunswick	1.75	1.37	27.7	

*estimate

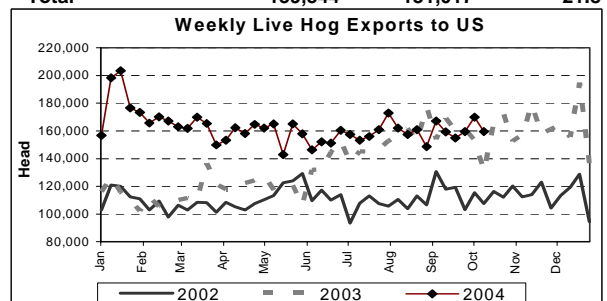
PORK EXPORTS YTD for the period of January to August

(Metric Tonnes)	2004	2003	% chg
FRESH, FROZEN AND PROCESSED PORK			
United States	274,381	296,202	(7.4)
Japan	142,908	133,493	7.1
Australia	22,769	24,125	(5.6)
Russia	7,828	19,125	(59.1)
Mexico	46,136	36,214	27.4
South Korea	20,441	21,157	(3.4)
China	24,317	17,607	38.1
Taiwan	14,060	12,288	14.4
Cuba	5,242	4,926	6.4
New Zealand	4,084	4,823	(15.3)
Other	76,067	44,409	71.3
Total	638,233	614,369	3.9

Source: STATISTICS CANADA

LIVE HOG EXPORTS TO U.S.

	YTD 04	YTD 03	% chg
HOGS (head)			
Barrows/Gilts/Sows	2,208,004	1,706,946	29.4
Feeder Pigs	4,455,323	3,747,178	18.9
Total	6,663,327	5,454,124	22.2
Week Ending 04-10-09			
Barrows/Gilts/Sows	57,778	51,636	11.9
Feeder Pigs	101,766	79,381	28.2
Total	159,544	131,017	21.8



Source: USDA-APHIS

IMPORTS YTD for the week ending October 9, 2004

(Metric Tonnes) preliminary	2004	2003	% chg
FRESH & FROZEN PORK			
United States	53,590	45,681	17.3
Denmark	793	2,051	-61.3
Other	28	942	-97.0

PROCESSED & OTHER PORK	2004	2003	% chg
United States	11,015	8,487	29.8
Denmark	-	6	
Other	131	116	12.9
TOTAL IMPORTS	65,557	57,283	14.4

Frozen Pork from the European Union:

The TRQ level has established for frozen meat of pork originating from EU countries, for the twelve month period August 1 to July 31, 2004. Imports in excess of 2,970,000 kg in the twelve month period are subject to a surtax in an amount equal to the value for the duty (100%) determined in accordance with the Customs Act. Effective as of October 3, 2003 the frozen pork TRQ from the EU imported under tariff item No. 0203.29.00 of the Customs Tariff has filled and therefore all frozen pork imports from the EU, until July 31, 2004, will be subject to the European Union Surtax Order.

	Permits issued as of October 16, 2004		
	2003/2004	2002/2003	% chg
Utilization (kg)	602,272	2,964,861	-79.7
Balance (kg)	2,367,728	5,139	45973.7
% Utilization	20.3%	99.8%	(79.7)

Prepared by: Red Meat Section, Agriculture and Agri-Food Canada

Contact: Patti Negrave (613) 759-6216 or see us at: <http://www.agr.ca/redmeat>