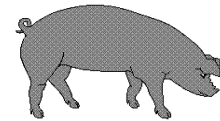




# Hog Statistics at a Glance CANADA



For the Week Ending September 4, 2004

Federal Slaughter	weekly kill # head	CUMULATIVE TOTALS TO DATE		
		2004	2003	% chg
		'000 head		
West	167,046	5,842.0	5,793.0	0.8
Ontario	92,546	2,899.0	2,902.0	-0.1
Quebec	166,290	5,657.0	5,470.0	3.4
Atlantic	9,240	339.0	351.0	-3.4
<b>CANADA</b>	<b>435,122</b>	<b>14,737.0</b>	<b>14,516.0</b>	<b>1.5</b>
<b>Pork Production (t)</b>	<b>38,073</b>	<b>1,289,488</b>	<b>1,265,795</b>	<b>1.9</b>
<b>Estimated Sow Slaughter</b>	<b>2,194</b>	<b>86,733</b>	<b>109,965</b>	<b>-21.1</b>

Weekly Prices \$/kg (index 100)			
	2004	2003	% chg
Ontario 102.5%	1.76	1.32	33.3
Quebec	1.76	1.23	43.1
Alberta	1.66	1.19	39.5
Manitoba*	1.72	1.36	26.5
British Columbia	1.86	1.38	34.8
Saskatchewan	1.58	1.13	39.8
Nova Scotia	1.80	1.41	27.7
Prince Ed. Is.	1.71	1.26	35.7
New Brunswick	1.76	1.36	29.4

\*estimate

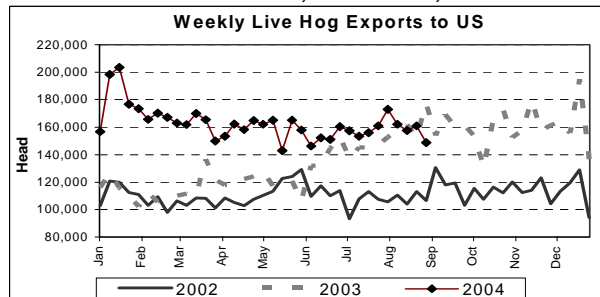
## PORK EXPORTS YTD for the period of January to June

(Metric Tonnes)	2004	2003	% chg
<b>FRESH, FROZEN AND PROCESSED PORK</b>			
United States	199,028	220,135	(9.6)
Japan	112,108	103,990	7.8
Australia	17,686	20,808	(15.0)
Russia	6,118	16,794	(63.6)
Mexico	32,129	25,633	25.3
South Korea	15,274	17,485	(12.6)
China	17,282	13,024	32.7
Taiwan	11,329	7,631	48.5
Cuba	4,265	4,190	1.8
New Zealand	2,268	3,713	(38.9)
Other	47,869	33,987	40.8
<b>Total</b>	<b>465,356</b>	<b>467,390</b>	<b>(0.4)</b>

Source: STATISTICS CANADA

## LIVE HOG EXPORTS TO U.S.

	YTD 04	YTD 03	% chg
<b>HOGS (head)</b>			
Barrows/Gilts/Sows	1,887,426	1,353,675	39.4
Feeder Pigs	3,805,715	3,170,935	20.0
<b>Total</b>	<b>5,693,141</b>	<b>4,524,610</b>	<b>25.8</b>
<b>Week Ending 04-08-28</b>			
Barrows/Gilts/Sows	52,114	79,869	-34.8
Feeder Pigs	96,674	97,092	-0.4
<b>Total</b>	<b>148,788</b>	<b>176,961</b>	<b>-15.9</b>



Source: USDA-APHIS

## IMPORTS YTD for the week ending August 28, 2004

(Metric Tonnes) preliminary	2004	2003	% chg
<b>FRESH &amp; FROZEN PORK</b>			
United States	45,885	38,154	20.3
Denmark	621	1,671	-62.8
Other	3	795	-99.6

## PROCESSED & OTHER PORK

	2004	2003	% chg
United States	9,005	6,639	35.6
Denmark	-	6	
Other	77	101	-23.8
<b>TOTAL IMPORTS</b>	<b>55,591</b>	<b>47,366</b>	<b>17.4</b>

## Frozen Pork from the European Union:

The TRQ level has established for frozen meat of pork originating from EU countries, for the twelve month period August 1 to July 31, 2004. Imports in excess of 2,970,000 kg in the twelve month period are subject to a surtax in an amount equal to the value for the duty (100%) determined in accordance with the Customs Act. Effective as of October 3, 2003 the frozen pork TRQ from the EU imported under tariff item No. 0203.29.00 of the Customs Tariff has filled and therefore all frozen pork imports from the EU, until July 31, 2004, will be subject to the European Union Surtax Order.

	Permits issued as of September 8, 2004		
	2003/2004	2002/2003	% chg
Utilization (kg)	417,453	840,249	-50.3
Balance (kg)	2,552,547	2,129,751	19.9
% Utilization	14.1%	28.3%	(50.3)

Prepared by: Red Meat Section, Agriculture and Agri-Food Canada

Contact: Patti Negrave (613) 759-6216 or see us at: <http://www.agr.ca/redmeat>