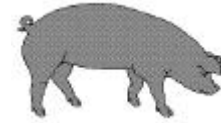




Hog Statistics at a Glance CANADA



For the Week Ending September 27, 2003

Federal Slaughter	weekly kill # head	CUMULATIVE TOTALS TO DATE		
		2003 '000 head	2002 '000 head	% chg
West	160,471	6,273.0	6,112.0	2.6
Ontario	83,472	3,155.0	3,071.0	2.7
Quebec	170,518	5,983.0	5,812.0	2.9
Atlantic	9,549	380.0	371.0	2.4
CANADA	424,010	15,791.0	15,366.0	2.8
Pork Production (t)	37,101	1,381,713	1,339,915	3.1
Estimated Sow Slaughter	2,605	118,334	123,650	-4.3

Weekly Prices \$/kg (index 100)		2003	2002	% chg
		Ontario 102.5%	1.54	1.20
Quebec	1.46	1.14	28.1	
Alberta	1.45	1.16	25.0	
Manitoba*	1.52	1.22	24.6	
British Columbia	1.59	1.22	30.3	
Saskatchewan	1.36	1.12	21.4	
Nova Scotia	1.54	1.07	43.9	
Prince Ed. Is.	1.49	1.15	29.6	
New Brunswick	1.41	1.02	38.2	

*estimate

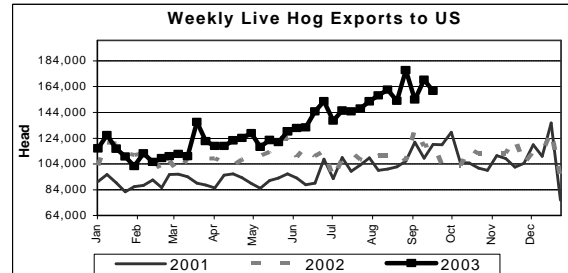
PORK EXPORTS YTD for the period of January 1 to July 31, 2003

(Metric Tonnes)	2003	2002	% chg
FRESH, FROZEN AND PROCESSED PORK			
United States	259,258	224,863	15.3
Japan	119,656	97,108	23.2
Australia	22,459	14,052	59.8
Russia	18,093	21,306	(15.1)
Mexico	31,075	21,743	42.9
South Korea	19,493	19,130	1.9
China	15,162	11,173	35.7
Taiwan	9,320	3,472	168.4
Cuba	4,496	6,122	(26.6)
New Zealand	4,138	4,442	(6.8)
Other	39,004	31,894	22.3
Total	542,154	455,305	19.1

Source: STATISTICS CANADA

LIVE HOG EXPORTS TO U.S.

	YTD 03	YTD 02	% chg
HOGS (head)			
Barrows/Gilts/Sows	1,541,821	1,386,511	11.2
Feeder Pigs	3,466,632	2,795,089	24.0
Total	5,008,453	4,181,600	19.8
Week Ending 03-09-20			
Barrows/Gilts/Sows	60,593	36,647	65.3
Feeder Pigs	100,069	82,780	20.9
Total	160,662	119,427	34.5



Source: USDA-APHIS

IMPORTS YTD for the week ending September 20, 2003

(Metric Tonnes) preliminary	2003	2002	% chg
FRESH & FROZEN PORK			
United States	40,453	50,106	-19.3
Denmark	1,552	625	148.3
Other	869	68	1177.9

PROCESSED & OTHER PORK	2003	2002	% chg
United States	7,332	7,619	-3.8
Denmark	6	-	-
Other	101	165	-38.8
TOTAL IMPORTS	50,313	58,583	-14.1

Frozen Pork from the European Union:

The TRQ level has established for frozen meat of pork originating from EU countries, for the twelve month period August 1 to July 31, 2004. Imports in excess of 2,970,000 kg in the twelve month period are subject to a surtax in an amount equal to the value for the duty (100%) determined in accordance with the Customs Act. In 2001/02 the Tariff Rate Quota was reached on October 2, 2002. Effective as of February 19, 2003 the Tariff Rate Quota has filled, therefore, all imports to July 31, 2003 will be subject to the EU Surtax Order.

	Permits issued as of September 29, 2003		
	2003/2004	2001/2002	% chg
Utilization (kg)	940,586	673,713	39.6
Balance (kg)	2,029,414	2,296,287	-11.6
% Utilization	31.7%	22.7%	39.6

Prepared by: Red Meat Section, Agriculture and Agri-Food Canada

Contact: Patti Negrave (613) 759-6216 or see us at: <http://www.agr.ca/redmeat>



Hog Statistics at a Glance CANADA

Canadian Hog Slaughter by Province of Origin

Total Slaughter Year to Date September 27, 2003

Week ending September 27, 2003

	2003	2002	% chg	2003	2002	% chg
British Columbia	190,120	184,721	2.9	4,626	5,217	-11.3
Alberta	2,635,943	2,496,482	5.6	69,699	71,445	-2.4
Saskatchewan	997,407	1,057,731	-5.7	25,676	25,932	-1.0
Manitoba	2,791,999	2,632,345	6.1	69,068	74,802	-7.7
Ontario	4,055,058	3,890,383	4.2	106,158	105,299	0.8
Quebec	5,497,089	5,414,262	1.5	158,121	153,252	3.2
New Brunswick	133,568	152,499	-12.4	3,065	3,980	-23.0
Nova Scotia	154,991	170,466	-9.1	3,911	4,046	-3.3
Prince Edward Island	159,729	161,507	-1.1	4,129	4,664	-11.5
CANADA	16,615,904	16,160,396	2.8	444,453	448,637	-0.9

UNITED STATES

Year To Date for the Week Ending September 27, 2003

Supply Summary

	2003	2002	% chg
Slaughter ('000 head)	71,543	72,160	-0.9
Slaughter for the week	1,999	1,981	0.9
Avg Dressed Wt (lbs)	261	262	-0.4
Pork Produced (mil lbs)	14,128	14,158	-0.2

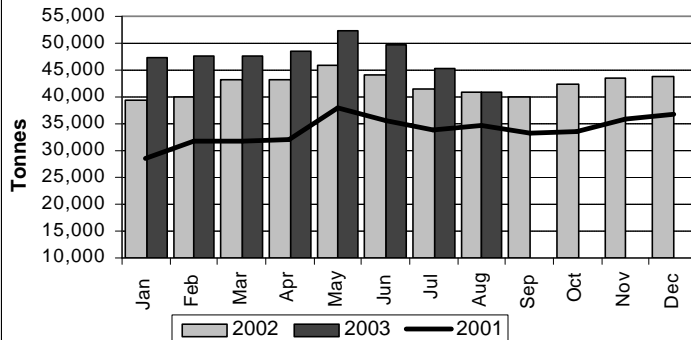
Source: USDA-APHIS

Weekly US Prices (\$/cwt)

	2003	2002	% chg
South St. Joseph	40.50	28.00	44.6
Sioux Falls	40.45	31.75	27.4
Lancaster County	45.13	26.38	71.1
National Cost	60.47	40.56	49.1

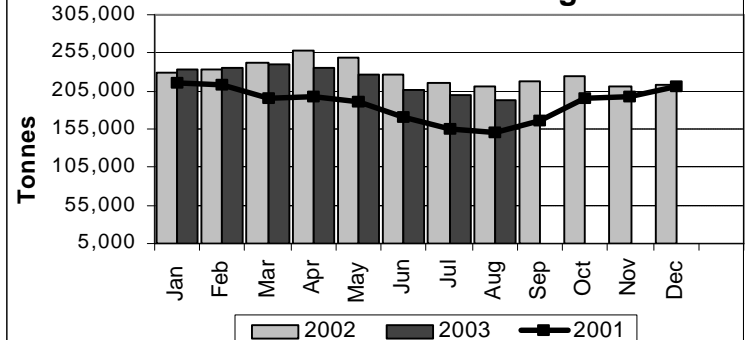
(51-54% Lean Yield Basis)

Canadian Stock of Frozen Pork



Source: Statistics Canada

U.S. Pork in Cold Storage



Source: USDA, NASS

Contact: Patti Negrave (613) 759-6216 or see us at: <http://www.agr.ca/redmeat>

Prepared by: Red Meat Section, Agriculture and Agri-Food Canada