

NATIONAL ARTS CENTRE
ORCHESTR



PINCHAS ZUKERMAN
MUSIC DIRECTOR

2003-2004 SEASON



**Don't miss a moment!
Subscribe now.**

**www.nac-cna.ca
1-866-850-ARTS
(613) 947-7000**



**NATIONAL ARTS CENTRE
CENTRE NATIONAL DES ARTS**



Dear friends,

Congratulations to the National Arts Centre Orchestra on its 35th season. Thank you to everyone who has made the last 34 years so memorable!

In the season to come, I am looking forward to a wide array of music-making with wonderful guest artists. The repertoire ranges from masters such as Beethoven and Berlioz, whose 200th birthday we will celebrate, to music from our NAC Awards Composers. Our Mozart Plus Festival, a favourite with our audiences, returns in January.

Musical highlights include NAC Orchestra principal musicians Amanda Forsyth, Joanna Groerer, Charles Hamann and Lawrence Vine performing as soloists on four different programmes; mezzo-soprano Susan Graham singing Berlioz's *Les Nuits d'été*; a wonderful *Don Quixote* by Richard Strauss; Angela Hewitt performing Beethoven; and Garrick Ohlsson who joins me in performing Bartók's *Piano Concerto No. 3*. Baritone Thomas Hampson and pianists Piotr Anderszewski and Lang Lang are among those making their NAC debut. I'm especially delighted that NAC English Theatre Artistic Director Marti Maraden will be participating in our all-Brahms programme with actor Tom McCamus.

The NACO tour adventures continue in 2003-2004, this time to the U.S. and Mexico. Our education activities both in the cities we visit and back home will be as important as the concerts themselves. The Tour will take us to, among others, Kennedy Center in Washington, D.C., Lincoln Center in New York, and Orchestra Hall in Chicago, as well as to Mexico.

I look forward to seeing you at the National Arts Centre.

A handwritten signature in black ink, which reads "Pinchas Zukerman". The signature is fluid and cursive, with a long, sweeping underline that extends to the right.

Pinchas Zukerman
Music Director



Signature SERIES



Lang Lang, piano

SEPTEMBER 24-25, 2003

WED-THURS

Pinchas Zukerman, conductor

Lang Lang, piano

ALEXINA LOUIE

O Magnum Mysterium: In Memoriam Glenn Gould

MOZART

Piano Concerto No. 24 in C minor, K491

BEETHOVEN

Symphony No. 3 in E-flat major, Op. 55, "Eroica"



Angela Hewitt, piano

OCTOBER 22-23, 2003

WED-THURS

Raymond Leppard, conductor

Angela Hewitt, piano

HAYDN

Symphony No. 93 in D major

BEETHOVEN

Piano Concerto No. 1 in C major, Op. 15

MENDELSSOHN

Symphony No. 5 in D major, Op. 107, "Reformation"



Piotr Anderszewski, piano

JANUARY 7-8, 2004

WED-THURS

Pinchas Zukerman, conductor

Piotr Anderszewski, piano

MOZART

Piano Concerto No. 20 in D minor, K466

SHOSTAKOVICH

Symphony No. 14, Op. 135



Susan Graham, mezzo-soprano

FEBRUARY 18-19, 2004

WED-THURS

Pinchas Zukerman, conductor/viola

Susan Graham, mezzo-soprano

BERLIOZ

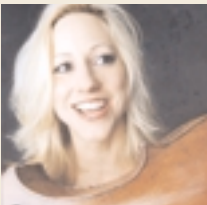
Le Corsaire: Overture

BERLIOZ

Les Nuits d'été, Op. 7

BERLIOZ

Harold in Italy, Op. 16



Amanda Forsyth, cello

APRIL 7-8, 2004

WED-THURS

Lawrence Foster, conductor

Pinchas Zukerman, violin/viola

Amanda Forsyth, cello

WEBER

Oberon: Overture

BRUCH

Violin Concerto No. 1 in G minor, Op. 26

R. STRAUSS

Don Quixote, Op. 35

This concert is made possible in part by the NAC Orchestra Association Kilpatrick Fund.



Charles Hamann, oboe

MAY 12-13, 2004

WED-THURS

Pinchas Zukerman, conductor

Charles Hamann, oboe

HAYDN

Symphony No. 6 in D major, "Le Matin"

MOZART

Oboe Concerto in C major, K314

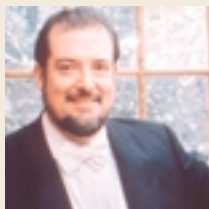
HAYDN

Symphony No. 104 in D major, "London"



Signature Series concerts begin at 20:00 in Southam Hall.

Ovation SERIES



Garrick Ohlsson, piano

OCTOBER 1-2, 2003

WED-THURS

Pinchas Zukerman,
conductor/violin

Amanda Forsyth, cello

Garrick Ohlsson, piano

BEETHOVEN

Piano Trio in D major, Op. 70,
No. 1, "Ghost"

BARTÓK

Piano Concerto No. 3 in E major

DVOŘÁK

Symphony No. 5 in F major, Op. 76

OCTOBER 28-29, 2003

TUES-WED

Pinchas Zukerman,
conductor/violin

ROSSINI

L'Italiana in Algeri: Overture

MOZART

Violin Concerto No. 5 in A major,
K219, "Turkish"

DENYS BOULIANE

World premiere of NAC commission

MOZART

Symphony No. 41 in C major, K551,
"Jupiter"



Pinchas Zukerman, conductor/violin

Thursday subscribers will attend this concert
on Tuesday



Lynn Harrell, cello

JANUARY 14-15, 2004

WED-THURS

Pinchas Zukerman,
conductor/viola

Lynn Harrell, cello



BEETHOVEN

Duo in E-flat major, "Eye-glass"

SHOSTAKOVICH

Cello Concerto No. 2 in G major,
Op. 126

MOZART

Symphony No. 40 in G minor, K550



Pascal Rogé, piano

FEBRUARY 4-5, 2004

WED-THURS

James Judd, conductor

Pascal Rogé, piano

FAURÉ

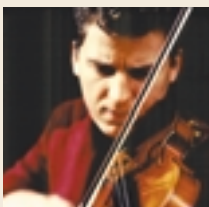
Masques et Bergamasques, Op. 112

SAINT-SAËNS

Piano Concerto No. 2 in G minor,
Op. 22

SCHUMANN

Symphony No. 3 in E-flat major,
Op. 97, "Rhenish"



James Ehnes, violin

APRIL 21-22, 2004

WED-THURS

Rumon Gamba, conductor

James Ehnes, violin

COPLAND

Music for the Theatre

BARBER

Violin Concerto, Op. 14

SCHUBERT

Symphony No. 5 in B-flat major, D485



Anton Kuerti, piano

MAY 19-20, 2004

WED-THURS

Pinchas Zukerman, conductor

Anton Kuerti, piano

BEETHOVEN

Egmont, Op. 84: Overture

BEETHOVEN

Piano Concerto No. 3 in C minor,
Op. 37

BEETHOVEN

Symphony No. 7 in A major, Op. 92



MOZART PLUS FESTIVAL

In January 2004, the National Arts Centre Orchestra
shines the spotlight on the genius of Mozart.

LOOK FOR THE MOZART PLUS LOGO IN THIS BROCHURE.
More activities will be announced at a later date.



Marti Maraden, narrator

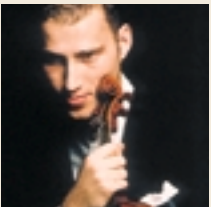
Sponsored by
Borden
Ladner
Gervais LLP



Tom McCamus, narrator



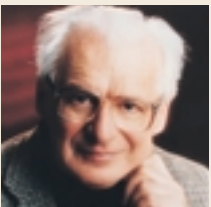
Lawrence Vine, horn



Nikolaj Znaider, violin



Helmuth Rilling, conductor



Franz-Paul Decker, conductor

SEPTEMBER 18-19, 2003

THURS-FRI

Pinchas Zukerman, conductor
Marti Maraden, narrator
Tom McCamus, narrator
Ottawa Choral Society
Choral Ensemble
(University of Ottawa)
Calixa Lavallée Choir
(University of Ottawa)

BRAHMS

Schicksalslied (Song of Destiny),
Op. 54

BRAHMS

Symphony No. 1 in C minor, Op. 68

The music of Brahms is complemented by readings of the fascinating, intimate correspondence between the composer and Clara Schumann, his muse and soul mate.

OCTOBER 9-10, 2003

THURS-FRI

Bramwell Tovey, conductor
Lawrence Vine, horn

GARY KULESHA

Chamber Concerto No. 6

MOZART

Horn Concerto No. 2 in E-flat major,
K417

BEETHOVEN

Symphony No. 6 in F major, Op. 68,
"Pastorale"

FEBRUARY 12-13, 2004

THURS-FRI

Pinchas Zukerman,
conductor/violin
Nikolaj Znaider, violin

TBA

Violin Duos

TCHAIKOVSKY

Serenade, Op. 48

BRAHMS

Violin Concerto in D major, Op. 77

Pre-concert three-course table d'hôte **Valentine Dinner in the Panorama Room**
\$38.10 (taxes and gratuities included)

MARCH 10-11, 2004

WED-THURS

Helmuth Rilling, conductor
Donna Brown, soprano
James Taylor, tenor
Nathan Berg, baritone
Cantata Singers of Ottawa
Opera Lyra Ottawa Chorus
Ottawa Choral Society

HAYDN

Die Schöpfung (The Creation)
– Sung in German

Friday subscribers will attend this concert
on Wednesday

MAY 6-7, 2004

THURS-FRI

Oliver Knussen, conductor
Pinchas Zukerman, violin

RAVEL

Mother Goose Suite

OLIVER KNUSSEN

Violin Concerto

IVALDI

Concerto for Two Violins

STRAVINSKY

Scènes de ballet

JUNE 3-4, 2004

THURS-FRI

Franz-Paul Decker, conductor
Joanna G'froerer, flute
Lucero Tena, castanets

ALBÉNIZ

Suite Española (arr. Frühbeck
de Burgos)

RODRIGO

Fantasia para un gentilhombre
(arr. Galway)

FALLA

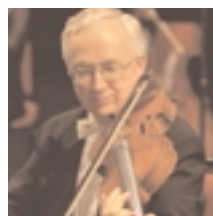
El Amor brujo: Suite

Why subscribe?

... and here are

- **FIRST CHOICE** of the best seats in Southam Hall.
- **UP TO 20% OFF** regular ticket prices.
- **SUBSCRIBER PREFERRED PRICES** to subscription performances of the 2003-2004 NAC Orchestra, Theatre and Dance seasons and priority seating before the Box Office opens to the general public.
- **NO SERVICE CHARGES** on your subscription order.
- **EASY EXCHANGES** into any other subscription event of the NAC Orchestra, Theatre or Dance 2003-2004 seasons. You'll never waste a ticket thanks to our subscriber-friendly exchange policy. (See page 14)
- **SEATING PRIORITY** for seasons to come. Current subscribers have first choice of the best seats available when you renew into next season.
- **THE CONVENIENCE** of having your musical calendar planned and all your tickets in hand before the season even begins.

Connoisseur



**BECOME A MEMBER OF THE CONNOISSEUR CLUB!
SUBSCRIBE TO ALL 18 CONCERTS OF THE AUDI SIGNATURE, OVATION AND
BOSTONIAN BRAVO SERIES AND ENJOY THESE ADDITIONAL BENEFITS:**

- Invitation to a reception with Pinchas Zukerman;
- Invitation to a rehearsal and backstage tour;
- Autographed CD of a Zukerman recording (one per order).



Don't delay. Order online!

For the music, of course!



15 more reasons!

- **A DEFERRED SUBSCRIPTION PAYMENT PLAN** (half now, half later).
- **THE ELECTRONIC PARKING PASS.** Only subscribers are eligible to apply for this, saving time and money! (See page 14)
- **10% OFF LUNCH AT LE CAFÉ** by showing your subscriber card.
- **ADVANCE NOTICE** of galas and other special events.
- **A FREE SUBSCRIPTION TO PRESTO!**, the NAC Orchestra newsletter.
- **FREE CALENDAR REMINDERS.** These handy stickers ensure that you won't forget when concert night comes.
- **SPECIAL DISCOUNTS** at CD Warehouse and Nicholas Hoare, Bookseller.
- **SPECIAL STUDENT DISCOUNTS:** Save a full 50% off regular prices.

Pick-Six

COMPOSE YOUR OWN SERIES OF SIX CONCERTS

from among the 18 Audi Signature, Ovation and Bostonian Bravo concerts on the previous pages to suit your personal taste and schedule, and still enjoy all the benefits of subscribing.

Please note:

Pick-Six subscriptions are allocated after the Audi Signature, Ovation and Bostonian Bravo renewals and it is often not possible to offer you the same seat for every concert.

As many concerts are highly subscribed, the number of tickets available to Pick-Six subscribers may be restricted.



www.nac-cna.ca/subscribe



From Gershwin to the Beatles, from ballet to silent film, this season's **CJOH Pops Series** offers a **fabulous range of music and entertainment at the highest level.**

CJOH Pops Series concerts begin at 20:00 in Southam Hall.

Courtesy of Ira and Leonore Gershwin Trusts



**OCTOBER 16-17-18
2003**

THU-FRI-SAT

An Evening with George Gershwin®

JACK EVERLY, CONDUCTOR

LUCILLE CHUNG, PIANO

DAVID ROGERS, VOCALIST

ANNE RUNOLFSSON, VOCALIST

The music of this eminently hummable sophisticate is featured in a tribute including such favourites as *The Man That Got Away* and *Strike Up the Band*, plus an Ira Gershwin medley and a *Porgy and Bess* symphonic portrait. The original jazz band version of *Rhapsody in Blue* will be performed by Canadian Lucille Chung, First Prize-winner at the Stravinsky International Piano Competition.

**DECEMBER 11-12-13
2003**

THU-FRI-SAT

Charlie Chaplin's *The Gold Rush*

**DONALD HUNSBERGER,
CONDUCTOR**

Charlie Chaplin's immortal silent film classic of poignant love, comedy and adventure in the Yukon features some of the Little Tramp's most beloved and hilarious sequences, including the Dance of the Dinner Rolls and the Roast Boot Feast. Original music composed by Chaplin himself is performed live by the NAC Orchestra while you laugh the evening away with one of the great comic geniuses of all time.



© Roy Export Co. Est



**JANUARY 29-30-31
2004**

THU-FRI-SAT

Evelyn Hart – First Lady of Dance

EARL STAFFORD, CONDUCTOR

Canada's most treasured and admired ballerina is the inspiration for a magical evening of ballet and dance music, which will include performances by the superstar and friends. Evelyn Hart, who has been described by Clive Barnes of the *New York Post* as "simply the instrument of dance," is united with Royal Winnipeg Ballet conductor Earl Stafford.

And every concert features your world-renowned **National Arts Centre Orchestra** in lush orchestral arrangements of popular music and classical delights.



**FEBRUARY 26-27-28
2004**

THU-FRI-SAT

John Pizzarelli Meets the Beatles

DON SEBESKY, CONDUCTOR

The brilliant, witty, groundbreaking music of the Fab Four has taken its place as the most popular of the 20th century. Jazzman John Pizzarelli, who has already captivated NAC Orchestra Pops audiences with his interpretations of classic standards and his sublime and inventive jazz guitar virtuosity, now assumes “the role of translator of the Beatles’ miraculous outpouring for the current generation.” – WQEW

**APRIL 15-16-17
2004**

THU-FRI-SAT

Glen Campbell

WITH SPECIAL GUEST
DEBBIE CAMPBELL

The fabulous career of this legendary balladeer and guitar virtuoso spans four decades and includes sales of over 40 million of his own records; he’s also recorded with such greats as Elvis Presley, the Beach Boys, and Frank Sinatra. Glen Campbell’s hits have made him an international celebrity and include *Gentle on My Mind*, *Wichita Lineman*, *Southern Nights*, *By the Time I Get to Phoenix* and *Rhinestone Cowboy*.



MAY 27-28-29, 2004

THU-FRI-SAT

Pops Goes British

JACK EVERLY, CONDUCTOR

**STARRING JUDY MCLANE,
BRAD LITTLE, STEVE ROSS,
GWENDOLYN JONES AND
JENNIFER SHRADER**

Produced by the Symphonic Pops Consortium.

London’s West End comes alive with this tribute to the British musical featuring composers such as Lionel Bart, Anthony Newley, Gilbert and Sullivan, and of course Andrew Lloyd Webber. Five Broadway singers bring to life Music Hall comedy, powerful West End ballads and a special Noel Coward tribute. Hear your favourite hits from blockbuster shows including *Evita*, *Oliver!*, *The Mikado*, *Sunset Boulevard* and *Phantom of the Opera*.

(613) 947-7000, EXT. 620

Great Performers

The musical intimacy of the solo piano recital; the vocal recital; and – new this year – chamber music with superstars. This is the NAC's **Great Performers Series** – one of the finest in the world.

Great Performers concerts begin at 20:00 in Southam Hall.

TUESDAY, OCTOBER 7, 2003

András Schiff, piano



One of the foremost pianists of the day, this double Grammy Award-winner returns for the first time since 1990 in his first-ever recital at the NAC. “Here was an astonishing demonstration of how to hold a capacity audience spellbound simply by applying the purest musicianship to the purest music.” – *Daily Telegraph*, London. “Mr. Schiff was an ideal pianist – warm, witty, and cultivated, subtle and detailed but never affected.” – *The New Yorker*.

MONDAY, NOVEMBER 24, 2003

Thomas Hampson, baritone



“Singers as distinguished in song as in opera are comparatively rare, and few are more distinguished than Thomas Hampson. His lyric baritone is one of the most beautiful instruments in the world today.” – *The Times*, London. The leading baritone of his generation makes his NAC debut in a tribute to composer Hugo Wolf to honour the centenary of the death of this Austrian composer who brought the expressive vocabulary of *lied* to new heights.

SATURDAY, JANUARY 17, 2004

Zukerman, Harrell and Friends



Spectacular violin and viola virtuoso Pinchas Zukerman teams up with cellist Lynn Harrell, his longtime friend and a consummate soloist, whose performances worldwide have placed him in the highest echelon of today's performing artists. The evening features Zukerman in recital as well as in chamber music with Harrell and musicians of the NAC Orchestra in a programme including the music of Mozart.



MONDAY, APRIL 19, 2004

Louis Lortie, piano



Hailed by London's *Daily Telegraph* as "one of perhaps a half a dozen pianists whom it is worth dropping everything to go and hear," Canada's celebrated piano virtuoso returns with a new recital programme including works by Schumann. "Everything... sang, dazzled, bewitched – still with effortless fluency but also with luminous feeling, in exquisite chiaroscuro... At the end, the audience was literally baying for encores." – *Financial Times*

WWW.NAC-CNA.CA/SUBSCRIBE

YOUNG PEOPLE'S CONCERTS

featuring Boris Brott

For 7 to 11-year-olds
and their grown-up friends!



Boris Brott conducting the National Arts Centre Orchestra

The Music-Makers

Ever since people began expressing themselves through music, there have been superstars – like Beethoven and Mozart, Paganini and Pavarotti – whose music lives on and continues to give us pleasure. In this season's series of four bilingual concerts, the ever-popular Boris Brott takes a look at music-makers: what they do, how

they do it and what makes them SO extraordinary.

Young People's Concerts take place at 13:30 and 15:30 in Southam Hall.

Enjoy pre-concert activities, organized by the National Arts Centre Orchestra Association, in the Foyers of the NAC 45 minutes before each concert.

Sing Out! The Human Voice

SATURDAY, NOVEMBER 22, 2003 AT 13:30 AND 15:30

Of all creatures on earth, humans have the best capacity to emit beautiful sounds and organize them in a way that stimulates emotions. From folk music and Inuit throat singing to choral works and opera, this concert focuses on the music-makers who use their vocal cords to amuse and amaze us – maybe even cure what ails us!



Pinchas Zukerman and Suzuki Music Students

Play Out! The Virtuoso

SATURDAY, JANUARY 10, 2004 AT 13:30 AND 15:30



Centuries ago, people began inventing tools to imitate song and project musical sounds, from the earliest sackbut, viol, drum and cymbal, gu jins and didgeridoos, to today's electronic and synthesized wonders, and of course the family of orchestral instruments. Join NACO in examining the music-makers who use astonishing dexterity to bring forth music from these inanimate objects. Violin virtuoso Pinchas Zukerman appears as special guest artist.



YPC pre-concert activities

Write On! The Creative Composer

SATURDAY, APRIL 10, 2004 AT 13:30 AND 15:30

How does a composer hear all the parts of a 60-piece orchestra in his head and then put these sounds on paper so that others can perform them? How could Beethoven do it when he was deaf? NAC Awards Composer Denys Bouliane shows how the composer works his magic – how a melody or motif is invented, developed and orchestrated. The grand finale is a NACO performance of a world premiere created on the spot by the audience!

Lead On! The Conductor

SATURDAY, MAY 22, 2004 AT 13:30 AND 15:30

As the number of musicians playing in groups grew from a few to 60 to sometimes over 100, it became necessary to have someone in charge to organize the players and successfully bring the notes off the page. Here's your chance to learn all about the person with the stick who is responsible for all that music without making a sound of his/her own! By the end of the programme, Boris will have you, the audience, conducting a fabulous piece with NACO!

**CHRISTMAS WITH THE NAC ORCHESTRA –
A FUN, FESTIVE CONCERT FOR MUSIC-LOVERS OF ALL AGES. (SEE PAGE 12)**

THE SERIES FEATURES NACOTRON, THE NAC'S GIANT-SCREEN VIDEO SYSTEM WHICH CAPTURES THE MUSICIANS UP CLOSE WHILE THEY PERFORM.

NACOtron is presented in collaboration with Rogers Television 22



This programme is supported by the National Youth and Education Trust with special thanks to TELUS, Founding Partner of the Trust, Corus Entertainment, J. Armand Bombardier Foundation and Universal Music.

Music Education Programmes

Did you know that the National Arts Centre Orchestra offers many different programmes for student audiences? From Student Matinees with the Orchestra to Open Rehearsals to Musicians in the Schools, we offer wonderful educational experiences for students from Kindergarten to Grade 12. Complete with accompanying study materials, these programmes are offered at a school-friendly price.

Interested teachers and parents should contact:

(613) 947-7000, ext. 390 or mused@nac-cna.ca

Visit us at www.artsalive.ca

Specials

Choose one, two or all of these additional concerts and as a subscriber you will not only receive priority seating; you'll also benefit from **subscriber preferred prices**.



DECEMBER 16-17, 2003

TUESDAY-WEDNESDAY, 20:00 IN SOUTHAM HALL

Handel: Messiah

Thierry Fischer, conductor

Nathalie Paulin, soprano

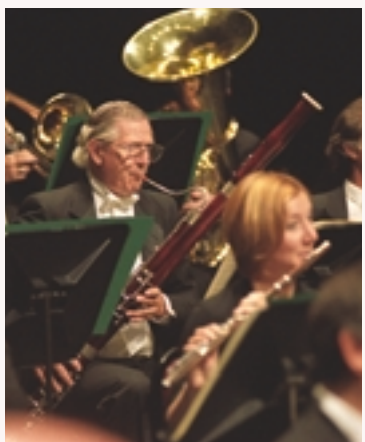
Matthew White, countertenor

Rufus Mueller, tenor

Daniel Lichti, bass-baritone

Cantata Singers of Ottawa

Opera Lyra Ottawa Chorus



DECEMBER 20, 2003

SATURDAY, 19:00 IN SOUTHAM HALL

Christmas with the NAC Orchestra

Celebrate the festive season with the NAC Orchestra and choral ensemble in an evening of Yuletide favourites that will delight music-lovers of all ages. Raise your voices in song and let the musicians of the Orchestra warm your hearts.



APRIL 4, 2004

SUNDAY, 20:00 IN SOUTHAM HALL

Burt Bacharach

Elegant, sophisticated and now more popular than ever, songwriter Burt Bacharach seduced Pops audiences in his appearances with the NAC Orchestra in 2001. Now the Oscar and Grammy Award-winning composer of such hits as *Walk On By*, *I'll Never Fall in Love Again*, and *Raindrops Keep Falling on my Head* is back for a special appearance with his own ensemble and singers.

"Apparently what the world needs now is Burt Bacharach... and Bacharach is brilliantly back!" – US.

MUSIC FOR A SUNDAY AFTERNOON

Four intimate chamber music concerts featuring musicians from the NAC Orchestra with Music Director Pinchas Zukerman and other celebrated guest artists.

SUNDAY

FEBRUARY 8, 2004

Pascal Rogé,
piano
Ensembles of the
NAC Orchestra



Pascal Rogé

SUNDAY

MARCH 14, 2004

Donna Brown,
soprano
Ensembles of the
NAC Orchestra



Donna Brown

SUNDAY

APRIL 25, 2004

Ensembles of the
NAC Orchestra



Pinchas Zukerman

SUNDAY

MAY 16, 2004

Pinchas Zukerman,
violin/viola
Ensembles of the
NAC Orchestra

Music for a Sunday Afternoon concerts begin at 14:00 in the Auditorium of the National Gallery of Canada. Presented in collaboration with the National Gallery of Canada.



National Gallery
of Canada

Musée des beaux-arts
du Canada

Pinchas Zukerman leading the NAC Orchestra



Information

■ TICKET EXCHANGE PRIVILEGES

You may exchange your tickets until 21:00 on the business day prior to the concert you can't attend for tickets to any other NAC Orchestra, or English Theatre, French Theatre or Dance subscription performance, subject to availability.

Please note:

- Tickets must be exchanged within the 2003-2004 season.
- There is a service charge per ticket for exchanges.
- If you are exchanging your tickets to purchase additional tickets for the same performance, there is no service charge.
- If you exchange to another NAC Orchestra concert, you will receive your subscriber discount. If you exchange to a Theatre or Dance performance, you will receive a subscriber preferred price.
- If the performance you exchange your tickets for is more expensive, you will be required to pay the difference; if it is less expensive, you will receive a credit voucher for the difference.
- Exchanges may be made by fax to (613) 947-7112 (photocopy your tickets and include your credit card number), by mail, or in person at the NAC Box Office.
- NAC Box Office hours are Monday through Saturday from 10:00 to 21:00.

■ PRE-CONCERT TALKS

Pre-Concert Talks with some of the season's artists and invited speakers from the music community will take place before selected concerts on the Audi Signature, Ovation and Bostonian Bravo Series. Enhance your musical experience with these entertaining, educational and informative discussions. Talks take place at 19:00, one hour before the concerts, at the NAC. Admission is free.

■ DONORS' CIRCLE...

Giving the Arts a Hand!

Celebrate *your* passion for the performing arts with the thousands of other Canadians who have already joined the Donors' Circle!

Whether your enthusiasm is for supporting the highest level of artistic performance, for making the arts more accessible or for providing meaningful learning opportunities for children, you'll find good reason to expand your participation at the National Arts Centre beyond your seat in the audience.

With an annual gift of \$100 or more, you will play an integral role in helping us maintain our proud tradition of artistic excellence.

The National Arts Centre invites you to *Give the Arts a Hand*. Join the Donors' Circle today! For more information call (613) 947-7000, ext. 315.



■ FINE DINING IN *Le Café*

The ideal place to dine before and after a performance, the NAC's Le Café restaurant offers intimate dining in contemporary elegance.

- Experience the culinary talents of Executive Chef Kurt Waldele while overlooking the Rideau Canal.
- Join us for lunch and receive a subscriber discount of 10% off food and free parking at noon when you dine. (Discount does not apply to specials already discounted.)
- Why not start a new dining tradition and savour our \$19.95 three-course table d'hôte menu, evenings after 20:00?
- Visit us after your concert and enjoy our tantalizing post-performance menu in a relaxed ambience.

Call early to make your reservations: (613) 594-5127.

■ NATIONAL ARTS CENTRE ORCHESTRA ASSOCIATION (NACOA)

The National Arts Centre Orchestra Association (NACOA) is the community-based support group for the National Arts Centre Orchestra. Your membership in NACOA helps promote NACO Music and Education Programmes and entitles you to a series of benefits. NACOA also takes pride in its enthusiastic core of volunteers, members who actively support NACO activities as well as organizing music-related and special fundraising events of their own.

If you are interested in becoming a member or an active volunteer of NACOA, please leave a message on the NACOA information line at (613) 947-7000, ext. 590, or visit the NACOA website at www.nacoa.woodwind.org.

■ PARKING PASSES

Only subscribers can sign up for an electronic parking pass that allows you an easy exit from the garage with the discounted cost of \$8.25 (\$8.50 as of September 1, 2003) deducted from your credit card. Call (613) 947-7000, ext. 553 to apply (\$10.00 deposit). Pre-paid parking vouchers at \$9.00 each (\$9.50 as of September 1, 2003) can still be purchased through the subscription order form (page 16) or in the NAC Foyer.

Proceeds from the parking operations support the performing arts at the NAC.

■ TICKET POLICY

National Arts Centre policy requires that every person have a ticket in order to be admitted to a performance. This policy applies to everyone, including children and infants.

■ NAC ORCHESTRA SUBSCRIPTION: CONDITIONS OF SALE

Subscription series are purchased and issued subject to the policies, rules and regulations of the National Arts Centre. All remittances except post-dated cheques will be deposited immediately upon receipt, without guaranteeing acceptance of order as requested. Since subscribers are paying less than full Box Office prices, no refunds will be made or credit vouchers issued except in the case of cancellation of a performance. You will have one year in which to redeem your tickets in the event of a cancellation. After this time, the tickets become null and void. You may redeem your tickets in person at the NAC Box Office or by mailing them to the Box Office.

■ GROUP DISCOUNTS AND SERVICES FOR INDIVIDUAL CONCERTS

If you are looking for an enjoyable and enriching activity for your group of friends, your organization, your business contacts or your social club, the National Arts Centre Orchestra offers great group rates for groups of 20 people or more. We also offer opportunities to organize receptions or special events before or after the concert.

For more information contact Jennifer Hirst at (613) 947-7000, ext. 384 or by e-mail at grp@nac-cna.ca.

(This offer is not applicable to subscriptions.)

Subscribe now:

(613) 947-7000, ext. 620 or

1-866-850-ARTS

Monday to Friday, 9:00 to 17:00

www.nac-cna.ca/subscribe

Programmes and artists are subject to change.

The information in this brochure was complete and accurate at the time of printing.



**Audi THE OFFICIAL CAR OF THE
NATIONAL ARTS CENTRE ORCHESTRA,
COURTESY OF
MARK MOTORS OF OTTAWA**

PHONE

(613) 947-7000, EXT. 620
1-866-850-ARTS

Monday to Friday, 9:00 to 17:00.

FAX

(613) 995-4343. Fax your order form to the Subscription Office.

MAIL

Subscription Office, National Arts Centre
P.O. Box 1534, Station B
Ottawa, ON K1P 5W1

ONLINE

www.nac-cna.ca/subscribe

IN PERSON

Visit the Subscription Office, one level below the NAC Box Office, Monday to Friday, 9:00 to 17:00. Or place your Order Form and payment in a sealed envelope marked "NAC Subscription Office" and drop it off at the Box Office, Monday to Saturday, 10:00 to 21:00. (30 minutes free parking in NAC Garage when subscribing.) Or visit the subscription desk in the Foyer at any spring 2003 concert. We will be happy to take your order either before the concert or during the intermission.

SUBSCRIBER INFORMATION

RENEWING SUBSCRIBERS

Please use your personalized Subscription Renewal Form.

RENEW BEFORE APRIL 28, 2003.

SENIOR DISCOUNT

If you are 65 or over, you are eligible for a senior discount for the Audi Signature, Ovation, Bostonian Bravo, Pick-Six, or Great Performers Series. Just include a photocopy of your birth certificate, passport or driver's license with your Order Form. Only one subscription may be purchased per I.D.

STUDENT DISCOUNT

If you are a full-time student at a primary, secondary or post-secondary school, include a photocopy of your valid student I.D. card with your Order Form. Only one subscription per I.D.

PAYMENT PLAN

Take advantage of our payment plan by sending two cheques, one dated today for one half of the cost of your order, and one dated August 1, 2003, for the second half.

TAX-DEDUCTIBLE DONATION

Your gift will foster excellence in the creation and interpretation of the performing arts. Please give generously.

Complete the Order Form and Contact Us

SUBSCRIPTION ORDER FORM FOR NEW SUBSCRIBERS

CURRENT SUBSCRIBERS, PLEASE USE YOUR PERSONALIZED RENEWAL FORM.

Ms. Mrs. Miss Mr.

Surname _____ First Name _____

Phone (Day) _____ (Evening) _____

Address _____

City _____ Province _____ Postal Code _____

Email _____ Senior/Student I.D. Number _____

(Senior and Student subscribers: please include photocopy of I.D. with order form – these orders cannot be accepted by phone.)

Order payable by

- Cheque for full amount Debit Card [Only in person]
 2 Cheques [Each for one half of the cost of your order, one dated today and one dated August 1, 2003]
 American Express MasterCard VISA enRoute Sears

Card No. _____ Expiry Date _____

Signature _____

ORDER YOUR SERIES

	SEAT CHOICE		NO. OF SEATS		PRICE PER SERIES/SEAT		TOTAL
	1 st	2 nd	Adult	Senior or Student	Adult	Senior or Student	
Audi Signature <input type="checkbox"/> Wed <input type="checkbox"/> Thurs	_____	_____	_____	_____	@ _____	@ _____	=\$ _____
Ovation <input type="checkbox"/> Wed <input type="checkbox"/> Thurs	_____	_____	_____	_____	@ _____	@ _____	=\$ _____
Bostonian Bravo <input type="checkbox"/> Thurs <input type="checkbox"/> Fri	_____	_____	_____	_____	@ _____	@ _____	=\$ _____
Connoisseur	Make your date and seat selection for each of Audi Signature, Ovation and Bostonian Bravo above.						
Pick-Six	Date _____ } _____ @ _____ @ _____ = \$ _____						
	Date _____ } _____ @ _____ @ _____ = \$ _____						
	Date _____ } _____ @ _____ @ _____ = \$ _____						
	Date _____ } _____ @ _____ @ _____ = \$ _____						
	Date _____ } _____ @ _____ @ _____ = \$ _____						
Valentine Dinner Feb. <input type="checkbox"/> 12 <input type="checkbox"/> 13	_____	_____	_____	_____	@ \$38.10	@ _____	=\$ _____
Great Performers	_____	_____	_____	_____	@ _____	@ _____	=\$ _____
CJOH Pops <input type="checkbox"/> Thurs <input type="checkbox"/> Fri <input type="checkbox"/> Sat	_____	_____	_____	_____	@ _____	@ _____	=\$ _____
Young People's Concerts	Adult	_____	_____	_____	@ \$72.00	@ _____	=\$ _____
<input type="checkbox"/> 13:30 <input type="checkbox"/> 15:30	Child	_____	_____	_____	@ \$49.00	@ _____	=\$ _____
	Family-of-Four	_____	_____	_____	@ \$236.00	@ _____	=\$ _____
Music for a Sunday Afternoon	unreserved	_____	_____	_____	@ \$90.00	@ \$58.00	=\$ _____

ADD-ON TICKETS

Date _____	_____	_____	_____	@ _____	=\$ _____
Date _____	_____	_____	_____	@ _____	=\$ _____
Date _____	_____	_____	_____	@ _____	=\$ _____
Date _____	_____	_____	_____	@ _____	=\$ _____
Messiah Dec. <input type="checkbox"/> 16 <input type="checkbox"/> 17	_____	_____	_____	@ _____	=\$ _____
Christmas with the NAC Orchestra Dec. 20	Adult	_____	_____	@ _____	=\$ _____
	Child	_____	_____	@ _____	=\$ _____
Burt Bacharach Apr. 4	_____	_____	_____	@ _____	=\$ _____

CALCULATE YOUR PAYMENT

Subtotal = \$ _____

If we are unable to fill your order according to your instructions, we will substitute the best tickets available. I would prefer you cancel my order.

Please send me an application for an electronic parking pass (see page 14) or please add \$9.00 (\$9.50 as of Sept. 1, 2003) for each pre-paid parking voucher required (one per concert). = \$ _____

We invite you to Give the Arts a Hand by joining the National Arts Centre Donors' Circle with a tax-deductible gift of \$100 or more. (Charitable Registration Number 119051407RR0001) = \$ _____

GRAND TOTAL = \$ _____



Subscribe in 3 easy steps

Step 1

CHOOSE YOUR SERIES AND PRICE FROM THE CHART

SUBSCRIPTION PRICES

AUDI SIGNATURE, OVATION AND BOSTONIAN BRAVO	Adult	\$375.00	\$291.00	\$282.00		\$222.00	\$141.00
	Senior	\$351.00	\$264.00	\$255.00		\$213.00	\$129.00
	Student	\$225.00	\$180.00	\$172.50		\$139.50	\$85.50
CONNOISSEUR	Adult	\$1,125.00	\$873.00	\$846.00		\$666.00	\$423.00
	Senior	\$1,053.00	\$792.00	\$765.00		\$639.00	\$387.00
	Student	\$675.00	\$540.00	\$517.50		\$418.50	\$256.50
*PICK-SIX	Adult	\$384.00	\$315.00	\$306.00		\$246.00	\$156.00
	Senior	\$357.00	\$297.00	\$288.00		\$231.00	\$150.00
	Student	\$225.00	\$180.00	\$174.00		\$141.00	\$87.00
GREAT PERFORMERS	Adult	\$212.00	\$180.00	\$174.00	\$144.00	\$140.00	\$88.00
	Senior	\$184.00	\$172.00	\$166.00	\$134.00	\$130.00	\$80.00
	Student	\$125.00	\$106.00	\$102.00	\$86.00	\$82.00	\$54.00
CJOH POPS	Adult/Senior	\$411.00	\$300.00	\$291.00	\$243.00	\$234.00	\$171.00
	Student	\$264.00	\$189.00	\$183.00	\$156.00	\$151.50	\$109.50
YOUNG PEOPLE'S CONCERTS	Adult/Senior	\$72.00	\$72.00	\$72.00		\$72.00	NOT AVAILABLE
	Child	\$49.00	\$49.00	\$49.00		\$49.00	
	Family-of-four	\$236.00	\$236.00	\$236.00		\$236.00	
MUSIC FOR A SUNDAY AFTERNOON	Adult/Senior	\$90.00					
	Student	\$58.00					

Prices shown include GST and facility fee.

*It is often not possible to offer Pick-Six subscribers the same seat for each concert and your first choice of seating may not be available. As certain concerts become highly subscribed, the number of tickets available to Pick-Six subscribers may be restricted.

Step 2

THEN ADD-ON FOR MORE SAVINGS

Add-On: Take advantage of this opportunity to buy additional single tickets to other NAC Orchestra concerts at subscriber preferred prices!

Subscribers purchasing Add-On tickets will be given priority seating immediately prior to the opening of the Box Office for each event. Add-On tickets will be mailed separately from your subscription tickets.

AUDI SIGNATURE, OVATION AND BOSTONIAN BRAVO	Adult/Senior	\$65.85	\$52.35	\$50.55		\$40.65	\$24.45
GREAT PERFORMERS	Adult/Senior	\$54.60	\$46.05	\$44.25	\$37.05	\$35.25	\$22.65
CJOH POPS	Adult/Senior	\$77.55	\$55.05	\$53.25	\$45.15	\$43.80	\$31.20
YOUNG PEOPLE'S CONCERTS	Adult/Senior	\$18.60	\$18.60	\$18.60		\$18.60	NOT AVAILABLE
	Child	\$11.15	\$11.15	\$11.15		\$11.15	
MUSIC FOR A SUNDAY AFTERNOON	Adult/Senior	\$24.45					
MESSIAH	Adult/Senior	\$69.45	\$57.75	\$55.95		\$43.35	\$30.75
CHRISTMAS WITH THE NAC ORCHESTRA	Adult/Senior	\$60.45	\$50.55	\$48.75		\$40.20	\$23.10
	Child	\$27.35	\$26.03	\$23.70		\$19.50	\$11.85
BURT BACHARACH	Adult/Senior	\$77.55	\$55.05	\$53.25	\$45.15	\$43.80	\$31.20

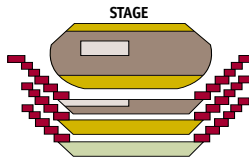
Prices shown include GST and facility fee.

Step 3

CHOOSE YOUR SEAT LOCATION

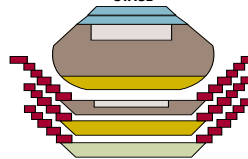
from these seating plans and enter the corresponding number in the Seat Choice column on the order form on page 16.

AUDI SIGNATURE, OVATION, BOSTONIAN BRAVO, PICK-SIX, AND SPECIALS



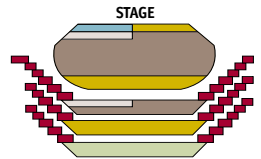
1 Boxes
2 Orchestra [Rows G-M, centre left]
3 Mezzanine [Rows A-C, left]
4 Orchestra [Rows D-S]
5 Mezzanine [Rows A-F]
6 Orchestra [Rows A-C]
7 Rear Orchestra [Rows T-Y]
8 Amphitheatre
9 Balcony

CJOH POPS & BURT BACHARACH



10 Boxes
11 Orchestra [Rows A-F, centre]
12 Mezzanine [Rows A-C, centre]
13 Orchestra [Rows A-S]
14 Mezzanine [Rows A-F]
15 Front Orchestra [Rows BB-GG]
16 Orchestra [Rows T-Y]
17 Amphitheatre
18 Balcony

GREAT PERFORMERS



19 Boxes
20 Orchestra [Rows D-F, left]
21 Mezzanine [Rows A-C, left]
22 Orchestra [Rows D-S]
23 Mezzanine [Rows A-F]
24 Orchestra [Rows A-C, left]
25 Orchestra [Rows A-C, right]
26 Orchestra [Rows T-Y]
27 Amphitheatre
28 Balcony

Music for a Sunday Afternoon – Seating at the Auditorium of the National Gallery of Canada is unreserved.
Young People's Concerts – Seating is the same price throughout Southam Hall (Balcony unavailable).