

ENGLISH Theatre 04/05



English Theatre Season 2004/05

MAIN STAGE SERIES

TRYING September 16 to October 2
RUTHERFORD & SON November 11 to 27
LOVE'S LABOUR'S LOST January 13 to 29
HUMBLE BOY March 3 to 19
VANYA April 21 to May 7

STUDIO SERIES

THE DANISH PLAY October 26 to November 6
PORTRAIT OF AN UNIDENTIFIED MAN
February 8 to 19
A WOMAN IN WAITING April 12 to 23

FAMILY THEATRE SERIES

BEGGAR BOY November 27 and 28
FROG AND HIS FRIENDS January 15 and 16
THE INCREDIBLE ADVENTURES
OF MARY JANE MOSQUITO April 30 and May 1

SPECIAL PRESENTATIONS

TEMPTING PROVIDENCE July 15 to 31
VICTORIA October 28
ODYSSEY Spring 2005

SUBSCRIBE TODAY!

613-947-7000 or 1-866-850-ARTS ext 620
www.nac-cna.ca/subscribe

COVER: Summer rainstorm in The Mall, London, England,
1934, by H.F. Davis. © Hulton Archive/Getty Images.

Brochure design by Punch & Judy Inc



NATIONAL ARTS CENTRE
CENTRE NATIONAL DES ARTS
P.O. BOX 1534, STATION B
OTTAWA, ONTARIO K1P 5W1

35 YEARS OF
AND inspiration

CANADA POST	Postage paid Addressed Admin	7019282
POSTES CANADA	Post only Mediaposte see address	

NATIONAL ARTS CENTRE
MARTI MARADEN, ARTISTIC DIRECTOR OTTAWA, CANADA

WHY SUBSCRIBE?

PRIORITY SEATING

Subscribe now and enjoy priority seating allocation for seasons to come.

MAXIMUM SAVINGS

Save up to 24% off regular ticket prices

SUBSCRIBER PREFERRED PRICES

When purchasing additional tickets to subscription performances of the 2004/05 English Theatre, NAC Orchestra, Dance and Théâtre français seasons, and priority seating before the Box Office opens to the general public. (Offer does not apply to already discounted Family Theatre Series, Preview performances or Special Presentations.)

NO SERVICE CHARGES

on your subscription order.

CONVENIENCE

Tickets are mailed directly to your home and your social calendar is planned well in advance.

EASY EXCHANGES

Scheduling conflict? Exchange tickets for any other event offered in the English Theatre, NAC Orchestra, Théâtre français or Dance 2004/05 seasons. (Please see ticket policies on page 24.)

DEFERRED PAYMENT

Pay half now, half later.

STAGES

Receive the English Theatre newsletter full of interesting background information about our productions.

SPECIAL EVENTS

"Subscriber only" gatherings with Marti Maraden.

ELECTRONIC PARKING PASS

Only subscribers are eligible to apply for this, saving time and money! (Please see page 22 for details.)

SPECIAL DISCOUNTS

at CD Warehouse and Nicholas Hoare Bookseller.

ENJOY A 10% DISCOUNT

on weekday lunch at Le Café with two hours of free parking when you show your subscriber card.



Often, when a season finally comes together, a theme begins to emerge which can give it a wonderful coherence. This season, I have been struck by the strong sense of time and place that is present in each of the wonderful plays that will appear on our stages.

From Joanna Glass' 1960s America to contemporary South Africa, each play invites its audience to open its eyes to a different reality; to learn about a people, a place, a time; to learn about what it means to be human; and to discern true learning from false.

This season beckons us to ask:
What do we want our legacy to be?
How will we tell our tales?
Having learned from the past, what knowledge and understanding can we share with future generations?

I love the question, and I'm fascinated by the pursuit of the answer. I hope you will be too.

MARTI MARADEN

Artistic Director, English Theatre

Photo of Marti Maraden by David Cooper.
OPPOSITE: Fiona Reid and Tom Rooney in the 2003/04 production of *Hamlet*. Photo by Gordon King.



"All we can learn about all who have gone before us, we learn from the art they've left us."

JOHN DOS PASSOS (QUOTED BY JUDGE BIDDLE IN *TRYING*)



MAIN STAGE SERIES

Trying

by
**JOANNA
GLASS**

directed by
Marti Maraden

set and costume design by
Christina Poddubiuk

lighting design by
John Munro

SEPTEMBER 16
to OCTOBER 2
preview September 15

PHOTO: *191 Rome, 1968*, by Harry Callahan.
Collection of George Eastman House,
Rochester; © The Estate of Harry Callahan,
courtesy Pace/MacGill Gallery, New York.

CANADIAN PREMIERE

with a cast of two

It's 1967. Martin Luther King is fighting for his dream; Bobby Kennedy is running for President; Elvis Presley marries Priscilla Beaulieu in Las Vegas; the U.S. Air Force intensifies its bombing of North Vietnam; and moviegoers are watching *The Graduate*.

Judge Francis Biddle – Attorney General of the United States during the Roosevelt Administration and Chief Justice for the Nuremberg Trials – is old, irascible, and dying. And today he has to break in yet another new secretary.

Inspired by her own experience as Biddle's personal secretary, Joanna Glass' gentle play pays tribute to the unlikely and touching friendship between a brilliant legal giant and a plain-spoken young woman from Saskatchewan.

*An NAC English Theatre/Canadian Stage
Company (Toronto) coproduction*

MADE POSSIBLE IN
PART BY THE NAC
DONORS' CIRCLE



PROUD MEDIA PARTNER OF
THE MAIN STAGE SERIES

OTTAWA CITIZEN

MAIN STAGE SERIES

Rutherford & Son

starring Michael Ball, Kelli Fox, Dylan Trowbridge and Nicole Underhay
with Donna Belleville, Mary Haney, Peter Krantz and Mike Shara

On the desolate Yorkshire moors, life is a struggle, not least for the browbeaten family of John Rutherford, tyrannical owner of a local glassworks.

But change is in the air – the world around them is struggling towards the promise of a brand new century, and a feisty daughter-in-law, newly introduced into the family, is causing other family members to question their assumed destinies and forcing Rutherford himself to make an unusual bargain to hold on to his legacy.

First produced in 1912, this little-known Edwardian play is a powerful drama played out against the backdrop of a world on the cusp of irrevocable change.

A Shaw Festival (Niagara-on-the-Lake) production

by
**GITHA
SOWERBY**

directed by
Jackie Maxwell

design by
William Schmuck

lighting design by
Louise Guinand

NOVEMBER 11 to 27
preview November 10

PHOTO: Boy working in a glass factory, 1910, by Lewis Wickes Hines. © Bettmann/Corbis.





Love's Labour's Lost

MAIN STAGE SERIES

by
**WILLIAM
SHAKESPEARE**

directed by
Marti Maraden

set and costume design by
John Pennoyer

lighting design by
Louise Guinand

original music and
sound design by
Marc Desormeaux

JANUARY 13 to 29
preview January 12

with a cast of twenty including David Bernstein, Ben Carlson, Todd Duckworth, Peter Froehlich, Kelli Fox, John Koensgen, Yanna McIntosh, Paul Rainville, David Schurmann, David William and Nigel Shawn Williams

When the King of Navarre and his three loyal companions take an oath to forswear the company of women to devote themselves to the pursuit of knowledge, they are setting themselves up for a spectacular romantic fall. Their commitment to a life of asceticism is soon tested by the arrival at court of the Princess of France and her three charming attendants. One by one, the men succumb to Cupid's arrow, but the women they love are understandably suspicious. After all, what must a wise woman think of a man who would so quickly betray his solemn oath?

Does love conquer all? Are Love's Labours Lost? Find out in this witty, lusty production staged on the full thrust.

An NAC English Theatre production

PHOTO: *The Fountain of Saturn, Versailles, 1912*, by Baron Adolph de Meyer. © 2004 G. Ray Hawkins Gallery, Los Angeles.

MAIN STAGE SERIES

Humble Boy

with a cast of six starring Fiona Reid and Dean Paul Gibson

A lot can happen in an English country garden, and when the socially inept Felix Humble, physicist and philosopher, returns home to bury his beekeeper father, it does.

Spectres of more than one kind are raised when Felix tries to come to terms with his grief while coping with the sour disapproval of his overbearing mother; the bawdy enthusiasm of her premature suitor; and the unexpected revelations of an abandoned ex-lover.

A play about lost people, lost time and lost opportunities; a *Hamlet* for the twenty-first century.

*An NAC English Theatre/Vancouver Playhouse
Theatre Company coproduction*

“Rich, original, intelligent, funny and touching, bursting with ideas and characters that you come to care about deeply.” *Daily Telegraph* (London)

by
**CHARLOTTE
JONES**

directed by
Glynis Leyshon

set and costume design by
Pam Johnson

MARCH 3 to 19
preview March 2

PHOTO: Honey bee pollinating a
coneflower. © Scott T. Smith/Corbis.





Vanya

by
**ANTON
CHEKHOV**

World premiere of
a new version by

TOM WOOD

directed by Bob Baker
set and costume design
by Leslie Frankish

APRIL 21
to MAY 7
preview April 20

PHOTO: *Field of Barley*,
© 1997 by Sarah Moon.

MAIN STAGE SERIES

with a cast of eight including Tom Wood

Small dreams and huge passions swallowed by a vast landscape.

On an isolated Alberta farm in 1928, life can be a struggle. For Vanya, that struggle has all been for the benefit of one man; Alexander, the pride of the family, the brilliant academic from the big city in the East. And now Alexander has come home, to take refuge in his retirement on the northern Alberta farm that has sustained him for so many years, and he has brought his enchanting young wife with him.

But a working farm is no place for an intellectual and a sophisticated young woman, and their eagerly-awaited arrival quickly results in upset routines, desperate self-reflection and the surfacing of unrequited yearnings.

Tom Wood's adaptation beautifully preserves Chekhov's dry, tragi-comic style where the lines between laughter, tears and rage are as blurry as a windbreak on a prairie horizon.

An NAC English Theatre/Citadel Theatre (Edmonton) coproduction

PART OF THE NAC
ALBERTA SCENE



STUDIO SERIES

The Danish Play

starring Kate Hennig
with Christine Brubaker, Eric Goulem, Randi Helmers,
Erika Hennebury, Bruce Hunter and Clinton Walker

Playwright Sonja Mills inherited the diaries of her great-aunt from her mother and became intrigued by the extraordinary life of a remarkable woman. *The Danish Play* is her intimate and moving dramatic biography of that woman, Agnete Ottosen, matriarch of the Danish resistance, concentration camp and torture survivor, spy and poet.

With deft skill, Mills elides time and place to paint a haunting and often witty portrait of a unique woman and the people who loved her.

A Nightwood Theatre (Toronto) production

“Easily one of the best plays of the year.”
Now Magazine (Toronto)

by
SONJA MILLS

directed by
Kelly Thornton

set design by
Robin Fisher

costume design by
Joanne Dente

lighting design by
Rebecca Picherack

sound design by
Angela Da Rocha

**OCTOBER 26 to
NOVEMBER 6**

PHOTO: *Revenge on Culture*, 1940, by Lee Miller
(from the publication *Grim Glory*) © Lee Miller
Archives, England 2004. All rights reserved.

STUDIO SERIES
SPONSORED BY



PROUD MEDIA
PARTNER OF THE
STUDIO SERIES

91.5
FM 104.1 QMÉ





Portrait of an Unidentified Man

STUDIO SERIES

written and
performed by
**PIERRE
BRAULT**

directed by
Brian Quirt

lighting design
by Martin Conboy

**FEBRUARY
8 TO 19**

**WORLD
PREMIERE**

Pierre Brault, creator and performer of the hugely successful *Blood on the Moon*, returns to the NAC Studio with his latest play based on the intriguing life of Hungarian painter Elmyr de Hory. Frustrated by his failure as an artist under his own name, de Hory turned to painting in the style of his contemporaries, including Matisse, Picasso and Modigliani, and passing off the results as originals. After decades spent toiling in anonymity, de Hory eventually attained notoriety as one of the greatest art forgers of the twentieth century.

In his own inimitable way, Brault crafts myriad characters, from Orson Welles and Zsa Zsa Gabor to de Hory himself and the artists whose work he forged, to tell a fascinating story that explores the very nature of art and identity.

An NAC English Theatre/Sleeping Dog Theatre (Ottawa) coproduction

Commissioned by the NAC English Theatre in association with Sleeping Dog Theatre

"Brault is pure actor... a pleasure to watch."

The Sunday Independent (Dublin) on Blood on the Moon

PHOTO: Mondrian's Glasses
and Pipe, 1926, by André Kertész.
© The Estate of André Kertész,
courtesy Stephen Bulger Gallery.

STUDIO SERIES

A Woman in Waiting

written by **Yael Farber** and **Thembi Mtshali**

In a unique and moving tribute to the human spirit, gifted storyteller and actor Thembi Mtshali tells an autobiographical story that powerfully evokes South Africa's torn past and hopeful future.

This internationally-acclaimed one-woman piece is a testament to a life of joy, pain and healing.

Compassionate, often humorous and frequently engaging, this extraordinary personal account bears compelling witness to the courageous voyages made by the black women of South Africa from Apartheid to Truth and Reconciliation.

Winner of an Edinburgh Fringe First Award 2000

A production from The Farber Foundry (South Africa)

based on the
life story of
Thembi Mtshali

starring
Thembi Mtshali

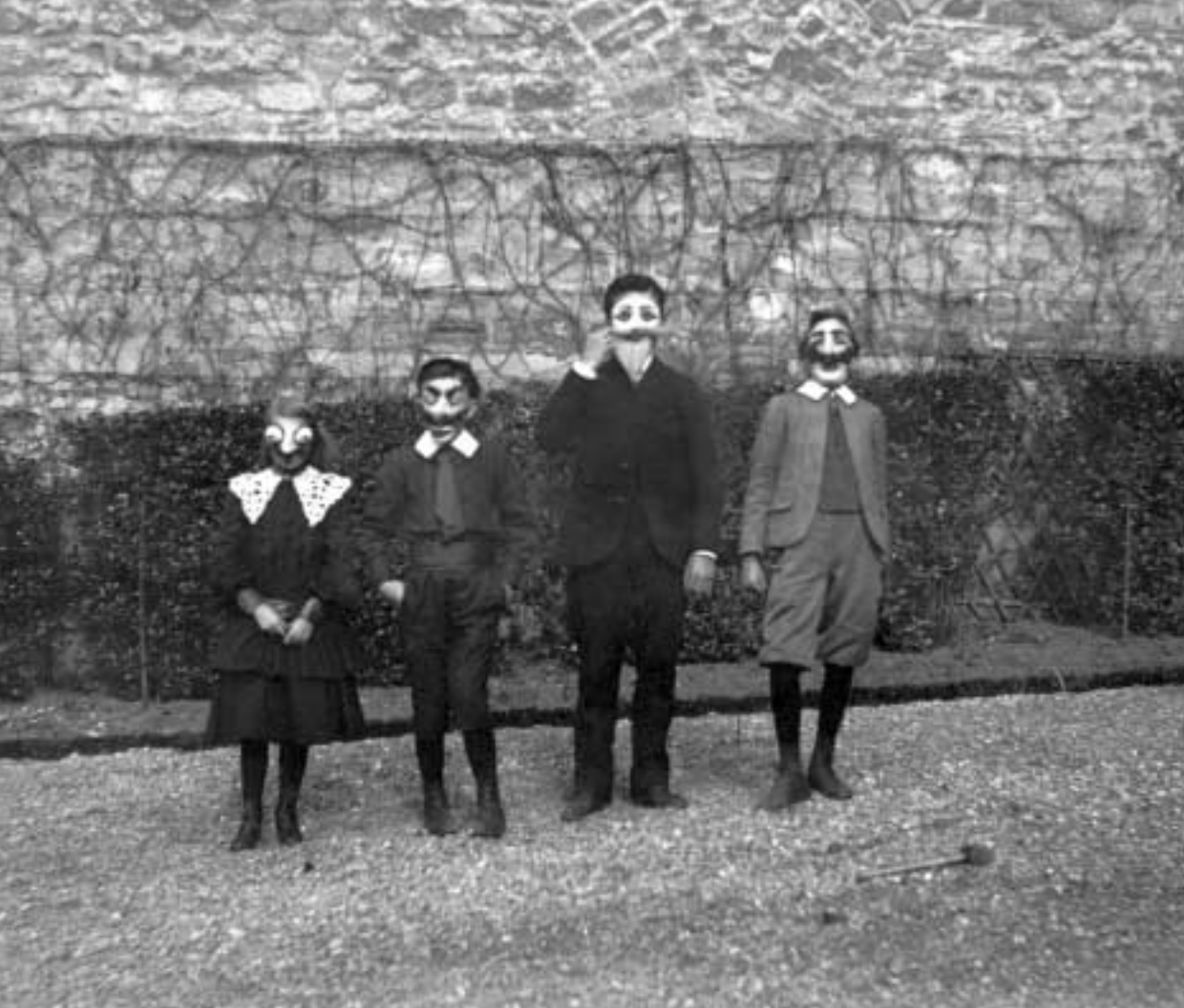
directed by
Yael Farber

APRIL 12 TO 23

*"Theatre at its most powerful,
the word catharsis was invented
to describe such glorious work."
The Guardian (London)*

PHOTO: Children playing in Soweto,
1994, by Andrew Lichtenstein.
© Andrew Lichtenstein/Corbis.





FAMILY THEATRE SERIES *For ages 5 to 9 and their families*

NOVEMBER 27 and 28
A Youtheatre (Montreal) production

Beggar Boy

by Greg MacArthur
directed by Michel Lefebvre

On the night of his 10th birthday, Zac runs away and disappears into the heart of the city, a magical, sometimes scary place, full of talking billboards that beckon him deeper into the consumer world, a world where every dream is possible – at a price.

After almost losing everything – his family, his home and even himself – Zac realizes that life and happiness aren't measured by how much is in your pockets, but by how much is in your heart.

Family Theatre Series
performances in the Studio

SATURDAY	SUNDAY
13:00	11:00
15:00	13:00
19:00	15:00

PHOTO: *Mardi Gras with Boubette, Louis, Robert and Zissou, Paris, 1903*, by Jacques Henri Lartigue.
© Ministère de la Culture – France / AAJHL

JANUARY 15 and 16
A Theater Terra (Netherlands)
production

Frog and His Friends

based on the stories of Max Velthuijs
artistic direction by Theo Terra

Little Max is moving tomorrow to a new house, but he doesn't want to go. He's afraid. Maybe his friends, Duck, Pig, Hare and Rat will be able to calm his fears? Maybe not.

Based on the award-winning children's books of Max Velthuijs, this delightful play by Dutch children's theatre troupe Theater Terra explores themes of friendship, trust, change and love with humour, poetry and puppets.

"Frog is a feast for everyone; with enormously creative, ingenious scenic inventions; the songs are wonderful." De Telegraaf (Netherlands)

APRIL 30 and MAY 1
A Concrete Theatre
(Edmonton) production

The Incredible Adventures of Mary Jane Mosquito

book, lyrics and music
by Tomson Highway
directed by Mieko Ouchi

The Incredible Adventures of Mary Jane Mosquito is a charming and whimsical musical cabaret in English with French and Cree. Born without wings, Mary Jane Mosquito is an outcast. After overcoming many obstacles and facing the ridicule of the other insects, Mary Jane eventually discovers her true voice through singing, and realizes that her way to shine in the world is to share that gift.

PART OF THE NAC
ALBERTA SCENE



SPECIAL PRESENTATIONS

JULY 15 to 31, 2004 IN THE STUDIO

A Theatre Newfoundland Labrador production

Tempting Providence

by Robert Chafe
directed by Jillian Keiley

with Deidre Gillard-Rowlings, Darryl Hopkins,
Melanie Caines and Robert Wyatt Thorne

In the 1920s and for the next fifty years, Myra Bennett was the only medical aid available to the inhabitants of the isolated communities along the 350 miles of rugged coastline on the Great Northern Peninsula of Newfoundland.

In her extraordinary career, she could claim to have delivered 700 babies, extracted 5,000 teeth, and saved her brother-in-law's almost-severed foot. *Tempting Providence* is a beautifully-crafted theatrical tribute to a woman whose bravery is the stuff of legend.

This production first delighted Ottawa audiences during the NAC Atlantic Scene in April 2003.

"If you haven't seen it... don't miss the next chance!"
The Evening Telegram (St. John's)



Deidre Gillard-Rowlings and Darryl Hopkins in *Tempting Providence*.
Photo by Derek Butt.



Dulcinea Langfelder in *Victoria*.
Photo by Cylla Von Tiedemann.

OCTOBER 28, 2004
IN THE THEATRE

A Dulcinea Langfelder & Co. (Montreal) production

A copresentation of English Theatre, NAC Dance
and Théâtre français

Victoria

based on texts by Charles Fariala
performed by Dulcinea Langfelder
with Éric Gingras

Using dance, mime and theatre, Dulcinea Langfelder brilliantly recaptures the comic traditions of Chaplin and Burns and Allen to tell a story of aging and dying with humour, affection, curiosity and, above all, tenderness.

The heroine, Victoria, has lost her memory but not her imagination. As her wheelchair becomes her tango partner, her rocking chair, her prison and her flying chariot, our imaginations take flight and we share an extraordinary voyage towards understanding and acceptance.

English Language performance

"Victoria... is not a play about the
end of life. It is a play about LIFE..."

INTERNATIONAL

Reading Series

Produced by the NAC English Theatre

THE ABBEY CENTENNIAL –

A Celebration of 100 Years of Irish Theatre

in association with the Ottawa International Writers Festival
October 4, 2004 at 19:30 in the NAC Studio

Éireann go Brách! An evening of some of the best theatre from the Emerald Isle's renowned Abbey Theatre.

PHAEDRA AND OTHER GREEK WOMEN

by Ximena Escalante (Mexico)

translated by Jorge Gidi and Guillermo Verdecchia
in association with the Playwrights Guild of Canada
January 31, 2005 at 19:30 in the NAC Fourth Stage

Discover contemporary Mexican society refracted through the lens of ancient tragedy.

THE LIGHTHOUSE

by Timothée de Fombelle (France)

translated by Don Hannah
in association with The Banff Centre
and the NAC Théâtre français

February 28, 2005 at 19:30 in the NAC Fourth Stage

The touching and mysterious story of a childhood spent at the edge of the world.

NEW THIS SEASON: subscriptions for the International Reading Series are now available. See inside back flap for prices.

Get More from your Theatre Experience

PRE-SHOW CHATS at 13:00 before the first Saturday matinee performance of each play in the Main Stage and Studio Series. Hear an invited guest speak about the production.

THURSDAY TALKBACKS Stay in the Theatre or Studio after the performance for a question-and-answer session with cast members. Talkbacks take place in weeks 2 and 3 of the Main Stage Series, and in week 2 of the Studio Series.

SHOP TALKS (Subscribers only) These Sunday-afternoon gatherings give you a behind-the-scenes glimpse into how a production comes to the stage. Actors, designers, and other invited speakers share their perspectives and knowledge.

FRIENDS OF ENGLISH THEATRE Volunteer behind the scenes, join in modest fundraising, and enjoy special events and outings. For more information, give the "Friends" a call at 613-947-7000 ext. 605.

DINING Luxurious and convenient, LE CAFÉ is the ideal place to dine before the show. Reservations: 613-594-5127. Conveniently located in the Main Foyer, INTERMEZZO offers perfect fare for a quick pre-show bite.

ELECTRONIC PARKING PASS Call 613-947-7000 ext. 553. \$8.50 flat rate discount for subscribers only. \$9.50 pre-paid vouchers available through the NAC Subscription Office or in the NAC Foyer. Proceeds from the parking operations support the performing arts at the NAC.

Programmes for Schools

We are proud of the diverse range of activities and resources we offer to schools. These include our popular student matinees for all grade levels, comprehensive study guides and superb Theatre Plus Workshops. For more information, contact Andrée Larose at 613-947-7000 ext. 332.

On a national level, we are delighted to continue to support and host the annual high school Canadian Improv Games (www.improv.ca) and to welcome more visitors than ever from across the country to our informative www.ArtsAlive.ca education website.



GIVING THE ARTS A HAND!

Celebrate your passion for the performing arts with the thousands of other Canadians who have already joined the Donors' Circle.

Whether your enthusiasm is for supporting the highest level of artistic performance, for making the arts more accessible or for providing meaningful learning opportunities for children – you'll find good reason to expand your participation at the National Arts Centre beyond your seat in the audience.

With your annual gift, you will play an integral role in helping us maintain our proud tradition of artistic excellence.

The National Arts Centre invites you to GIVE THE ARTS A HAND. Join the Donors' Circle today! For more information call 613-947-7000 ext. 315.

A COMMITMENT TO CANADIAN TALENT

At the NAC English Theatre we are excited about the new voices, new talent and new work that we help to foster and develop through our commissioning and new play development programmes. And this year, we have even more to be excited about.

Magnetic North Theatre Festival

EDMONTON, JUNE 9 TO 19, 2004

Successfully premiered in Ottawa last June, the national Magnetic North Theatre Festival will take place this summer in Edmonton, co-presented by the NAC English Theatre and in partnership with Edmonton's vibrant theatre community.

Featuring eleven compelling productions, as well as the fascinating MAGNETIC ENCOUNTERS series of readings, lunchtime panels and celebrity speakers, and some of the best children's theatre on the planet, this festival promises to be every bit as exciting as the first.

For more information phone 613-947-7000 ext. 719 or visit www.magneticnorthfestival.ca

Don't forget – the Magnetic North Theatre Festival returns to Ottawa in 2005!

On the Verge IS ON THE ROAD!

JUNE 14 TO 19, 2004

MADE POSSIBLE IN PART BY THE NAC DONORS' CIRCLE

This year, for the first time in its eight-year history, the NAC English Theatre's annual festival of new play readings will take place outside the nation's capital, in Edmonton. In association with the new network of Playwrights' Development Centres and The Citadel Theatre, ON THE VERGE will showcase eleven of the best new works by playwrights from across the country.

For more information about ON THE VERGE in Edmonton, visit the NAC website at www.nac-cna.ca

Odyssey COMING IN SPRING 2005

For ages 10 and up

by John Murrell; based on the epic poem by Homer directed by Kim Selody of Carousel Players

The NAC English Theatre and the Ottawa Children's Festival are pairing up to bring you Alberta playwright John Murrell's brilliant adaptation of Homer's *Odyssey*. This wonderful version is packed to the rafters with gory monsters, flesh-eating cyclopes, stormy shipwrecks, vengeful gods and goddesses and the death-defying, awe-inspiring, gut-wrenching adventures of its wily hero!

Buy tickets for yourself *and* the kids! Stay tuned for venue details and dates.

HOW TO SUBSCRIBE

CHOOSE THE SERIES, WEEK, and DAY to which you would like to subscribe, using the calendar and price chart on the flap opposite, then CONTACT US:

CALL US Monday to Friday from 9:00 to 17:00
613-947-7000 OR 1-866-850-ARTS ext. 620

ONLINE For quick, easy and secure subscription purchases 24 hours a day, visit the NAC website at www.nac-cna.ca/subscribe

IN PERSON The Subscription Office is on the lower level below the NAC Box Office at 53 Elgin Street, Monday to Friday from 9:00 to 17:00. Thirty minutes FREE parking in the NAC Garage when purchasing or exchanging tickets (parking stub must be validated by the NAC Subscription Office or Box Office).

BY FAX 613-995-4343

BY MAIL P.O. Box 1534, Stn. B Ottawa, Ontario K1P 5W1
For fax and mail orders, please download an order form at www.nac-cna.ca/subscribe

TICKET EXCHANGES

You may exchange your tickets to any other 2004/05 season English Theatre, Théâtre français, NAC Orchestra or Dance subscription performance (subject to availability) until 21:00 on the business day before the day of the performance you cannot attend. There is a service charge per ticket for exchanges.

IN PERSON at the NAC Box Office, Monday through Saturday 10:00-21:00; **BY FAX** Photocopy your tickets including your credit card number and fax to 613-947-7112; **BY MAIL** to the NAC Box Office P.O. Box 1534, Stn. B. Ottawa, Ontario K1P 5W1

TICKET POLICIES

SENIORS Please bring your birth certificate, passport or driver's licence to the Subscription Office when purchasing a Senior's subscription. Only one subscription may be purchased per I.D. Renewing seniors are not required to show identification.

STUDENTS If you are a full-time student at a primary, secondary or post-secondary school, bring your valid student I.D. card to the Subscription Office. Only one subscription may be purchased per I.D. card. 50% student discount is calculated before the Facility Fee is applied. Student I.D. is required with each renewal.

YOUNG PROFESSIONALS (Ages 20-29) Bring your birth certificate, passport or driver's licence to the Subscription Office when purchasing a Young Professionals subscription. Only one subscription may be purchased per I.D. Proof of age is required with each renewal.

CONDITIONS OF SALE Subscription series are purchased and issued subject to the policies, rules and regulations of the National Arts Centre. All remittances except post-dated cheques will be deposited immediately upon receipt, without guaranteeing acceptance of order as requested.

Since subscribers are paying less than full Box Office prices, no refunds will be made or credit vouchers issued except in the case of cancellation of a performance. In the event of a cancellation, you have one year in which to redeem your tickets, after which the tickets become null and void. You may redeem your tickets at the NAC Box Office (in person or by mail).

National Arts Centre policy requires that every person have a ticket in order to be admitted to a performance. This policy applies to everyone, including children and infants.

Ticket prices include GST and Facility Fee where applicable. The Facility Fee supports the maintenance of the National Arts Centre.

Programmes and casting may be modified or cancelled without notice, and no guarantee can be given as to the presentation of the events announced.

SUBSCRIPTIONS for your lifestyle

CONNOISSEUR SERIES – SEE ALL 8 PLAYS AND SAVE!
5 plays on the Main Stage, 3 in the Studio.

MAIN STAGE SERIES 5 superb plays in the comfortable elegance of the NAC Theatre.

STUDIO SERIES New Work! New Visions! New Artists!
3 plays in the intimate NAC Studio.

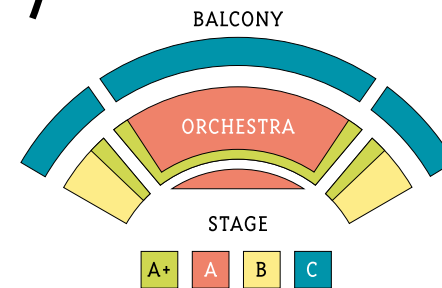
FAMILY THEATRE SERIES Give the love of Theatre to a young person in your life. This hugely popular series offers 3 plays chosen for ages 5 to 9 and sells out on subscription!

OPENING NIGHT (Main Stage and Studio Series) Celebrate opening night with the actors and company at the opening night party hosted by Artistic Director Marti Maraden.

WEDNESDAY MATINEE (Main Stage only) Shared with student audiences, this 12:30 matinee offers an economical way to see five plays on the main stage. Limited seating.

PREVIEW (Main Stage only) See the shows before they open AND enjoy significantly reduced ticket prices. This popular series sells out on subscription – hurry to reserve your tickets now!

SENIORS Coming to the theatre couldn't be easier! If you are 65 or over, you'll enjoy seniors' discounts on Saturday matinee performances in the Main Stage and Studio Series; OR Friday evening performances in the Main Stage Series; OR Five plays in the Wednesday 12:30 matinee series. (Please see conditions of sale on page 24.)



Seating Chart for MAIN STAGE SERIES

STUDENTS Did you know that the arts increase your brainpower? Take a night off from homework and come to the theatre! Students save 50% off regular ticket prices. (Please see conditions of sale on page 24.)

YOUNG PROFESSIONALS FRIDAY NIGHT OUT (Ages 20-29) TGIF! Relax at the Theatre and enjoy great savings. Dine at D'arcy McGee's Pub (Sparks Street) and enjoy 10% off food when you show your ticket stub. (Please see conditions of sale on page 24.)

GROUPS and CORPORATE PACKAGES Groups enjoy discounted ticket prices for English Theatre performances. Gather twenty of your friends, clients or business contacts and let us entertain you! For information about group rates, corporate subscriptions and special pre- or post-performance receptions, contact Jennifer Hirst at 613-947-7000 ext. 384 or by e-mail at grp@nac-cna.ca

TEMPTING PROVIDENCE SPECIAL

WEEK	MON	TUES	WED	THUR	FRI	SAT
WEEK 1				JULY 15	JULY 16	JULY 17
				20:00 opening	20:00	20:00
WEEK 2	JULY 19	JULY 20	JULY 21	JULY 22	JULY 23	JULY 24
	20:00	20:00	20:00	20:00	20:00	20:00
WEEK 3	JULY 26	JULY 27	JULY 28	JULY 29	JULY 30	JULY 31
	20:00	20:00	20:00	20:00	20:00	20:00

TRYING MAIN STAGE

WEEK	MON	TUES	WED	THUR	FRI	SAT
WEEK 1			SEPT 15	SEPT 16	SEPT 17	SEPT 18
			19:30 preview	19:30 opening	19:30	14:00* 19:30
WEEK 2	SEPT 20	SEPT 21	SEPT 22	SEPT 23	SEPT 24	SEPT 25
	19:30 coffee	19:30	19:30	19:30 talkback	14:00 19:30	14:00 19:30
WEEK 3	SEPT 27	SEPT 28	SEPT 29	SEPT 30	OCT 1	OCT 2
	19:30	12:30 19:30	12:30 19:30	12:30 19:30 talkback	19:30	14:00 19:30

ABBAY CENTENNIAL READING SERIES OCTOBER 4 at 19:30

THE DANISH PLAY STUDIO

WEEK	MON	TUES	WED	THUR	FRI	SAT
WEEK 1	OCT 25	OCT 26	OCT 27	OCT 28	OCT 29	OCT 30
	20:00 preview	20:00 opening	20:00	20:00	20:00	14:00* 20:00
WEEK 2	NOV 1	NOV 2	NOV 3	NOV 4	NOV 5	NOV 6
	20:00	20:00	20:00	20:00 talkback	20:00	14:00 20:00

VICTORIA SPECIAL

THUR
OCT 28
20:30

* - PRE-SHOW CHAT (begins at 13:00, one hour prior to these Saturday matinee performances)

coffee = COFFEE CHAT (Marti Maraden's annual subscriber gathering)
talkback = THURSDAY TALKBACK (following the performance)

See page 21 for more on the INTERNATIONAL READING SERIES; see page 22 for more on both PRE-SHOW CHATS and THURSDAY TALKBACKS

RUTHERFORD & SON MAIN STAGE

WEEK	MON	TUES	WED	THUR	FRI	SAT
WEEK 1			NOV 10	NOV 11	NOV 12	NOV 13
			19:30 preview	19:30 opening	19:30	14:00* 19:30
WEEK 2	NOV 15	NOV 16	NOV 17	NOV 18	NOV 19	NOV 20
	19:30	19:30	12:30 19:30	12:30 19:30 talkback	19:30	14:00 19:30
WEEK 3	NOV 22	NOV 23	NOV 24	NOV 25	NOV 26	NOV 27
	19:30	19:30	19:30	19:30 talkback	19:30	14:00 19:30

BEGGAR BOY FAMILY SERIES

SAT	SUN
NOV 27	NOV 28
15:00	13:00
19:00	15:00

LOVE'S LABOUR'S LOST MAIN STAGE

WEEK	MON	TUES	WED	THUR	FRI	SAT
WEEK 1			JAN 12	JAN 13	JAN 14	JAN 15
			19:30 preview	19:30 opening	19:30	14:00* 19:30
WEEK 2	JAN 17	JAN 18	JAN 19	JAN 20	JAN 21	JAN 22
	19:30	12:30 19:30	12:30 19:30	19:30 talkback	19:30	14:00 19:30
WEEK 3	JAN 24	JAN 25	JAN 26	JAN 27	JAN 28	JAN 29
	19:30	19:30	19:30	19:30 talkback	19:30	14:00 19:30

FROG AND FRIENDS FAMILY SERIES

SAT	SUN
JAN 15	JAN 16
11:00	11:00
15:00	13:00
19:00	15:00

PHAEDRA READING SERIES JANUARY 31 at 19:30

UNIDENTIFIED MAN STUDIO

WEEK	MON	TUES	WED	THUR	FRI	SAT
WEEK 1	FEB 7	FEB 8	FEB 9	FEB 10	FEB 11	FEB 12
	20:00 preview	20:00 opening	20:00	20:00	20:00	14:00* 20:00
WEEK 2	FEB 14	FEB 15	FEB 16	FEB 17	FEB 18	FEB 19
	20:00	20:00	20:00	20:00 talkback	20:00	20:00

LIGHTHOUSE READING SERIES FEBRUARY 28 at 19:30

HUMBLE BOY MAIN STAGE

WEEK	MON	TUES	WED	THUR	FRI	SAT
WEEK 1			MAR 2	MAR 3	MAR 4	MAR 5
			19:30 preview	19:30 opening	19:30	14:00* 19:30
WEEK 2	MAR 7	MAR 8	MAR 9	MAR 10	MAR 11	MAR 12
	19:30	12:30 19:30	12:30 19:30	19:30 talkback	19:30	14:00 19:30
WEEK 3	MAR 14	MAR 15	MAR 16	MAR 17	MAR 18	MAR 19
	19:30	19:30	19:30	19:30 talkback	19:30	14:00 19:30

A WOMAN IN WAITING STUDIO

WEEK	MON	TUES	WED	THUR	FRI	SAT
WEEK 1	APR 11	APR 12	APR 13	APR 14	APR 15	APR 16
	20:00 preview	20:00 opening	20:00	20:00	20:00	14:00* 20:00
WEEK 2	APR 18	APR 19	APR 20	APR 21	APR 22	APR 23
	20:00	20:00	20:00	20:00 talkback	20:00	14:00 20:00

MARY JANE MOSQUITO FAMILY SERIES

SAT	SUN
APR 30	MAY 1
13:00	11:00
15:00	13:00
19:00	15:00

VANYA MAIN STAGE

WEEK	MON	TUES	WED	THUR	FRI	SAT
WEEK 1			APR 20	APR 21	APR 22	APR 23
			19:30 preview	19:30 opening	19:30	14:00* 19:30
WEEK 2	APR 25	APR 26	APR 27	APR 28	APR 29	APR 30
	19:30	12:30 19:30	12:30 19:30	19:30 talkback	19:30	14:00 19:30
WEEK 3	MAY 2	MAY 3	MAY 4	MAY 5	MAY 6	MAY 7
	19:30	19:30	19:30	19:30 talkback	19:30	14:00 19:30

ENGLISH THEATRE 04/05 SUBSCRIPTION PRICES

A+ seating A seating B seating C seating

8 PLAYS: CONNOISSEUR SERIES (includes Main Stage Series and Studio Series)

Day	Age Group	Adult	A+ seating	A seating	B seating	C seating
Tuesday, Wednesday, Thursday evenings	Student	\$264.00	\$179.75	\$257.00	\$174.75	\$250.00 \$216.00
Friday evening	Senior/Ages 20-29 Student	\$297.00 \$205.00	\$287.00 \$197.50	\$287.00 \$190.00	\$278.00 \$244.00	\$244.00 \$167.00
Saturday evening	Adult Student	\$297.00 \$205.00	\$287.00 \$197.50	\$278.00 \$190.00	\$278.00 \$167.00	\$244.00 \$167.00
Saturday matinee	Adult Senior Student	\$240.00 \$207.00 \$162.75	\$233.00 \$201.00 \$157.75	\$226.00 \$195.00 \$152.75	\$188.00 \$176.00 \$129.75	

5 PLAYS: MAIN STAGE SERIES A+ seating A seating B seating C seating

Day	Age Group	Adult	A+ seating	A seating	B seating	C seating
Tuesday, Wednesday Thursday evenings	Student	\$205.00 \$134.00	\$198.00 \$129.00	\$190.00 \$120.00	\$155.00 \$101.00	
Friday evening	Senior/Ages 20-29 Student	\$230.00 \$188.00 \$154.00	\$220.00 \$182.00 \$146.50	\$210.00 \$175.00 \$139.00	\$175.00 \$165.00 \$116.00	
Saturday evening	Adult Student	\$230.00 \$154.00	\$220.00 \$146.50	\$210.00 \$139.00	\$175.00 \$116.00	
Saturday matinee	Adult Senior Student	\$180.00 \$158.00 \$117.00	\$173.00 \$152.00 \$112.00	\$165.00 \$145.00 \$107.00	\$125.00 \$125.00 \$84.00	

Day	Age Group	Adult	A+ seating	A seating	B seating	C seating
Wednesday matinee	Senior Student	\$138.00 \$118.00				
5 PLAYS	Student	\$93.00				

Preview: all seats non-reserved \$125.00 \$125.00 \$125.00 \$125.00

SPECIAL PRESENTATIONS A seating B seating C seating

Play	Adult	A seating	B seating	C seating
VICTORIA Theatre: reserved	\$40.00 \$21.00	\$37.00 \$19.50	\$29.00 \$15.50	
TEMPTING PROVIDENCE Studio: non-reserved	\$20.00 \$13.00			

3 PLAYS: STUDIO SERIES

Day	Age Group	Adult	Child	Family of Four
Tuesday, Wednesday, Thursday evenings	Student	\$72.00 \$45.75		
Friday, Saturday evenings	Adult Student	\$82.00 \$51.00		
Saturday matinee	Adult Senior Student	\$72.00 \$60.00 \$45.75		

3 PLAYS: FAMILY THEATRE SERIES

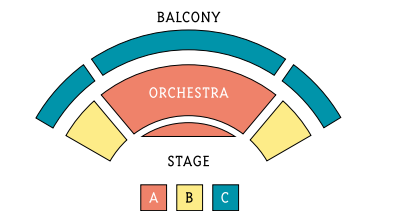
Play	Child	Adult	Family of Four
Studio: all seats non-reserved	\$31.50 \$31.50		\$115.00

3 READINGS: INT'L READING SERIES

Play	Adult	Student
Studio/Fourth Stage: all seats non-reserved	\$30.00 \$15.00	

Subscription prices include GST and Facility Fee where applicable.

50% student discount is calculated before the Facility Fee is applied.



Seating Chart for VICTORIA only