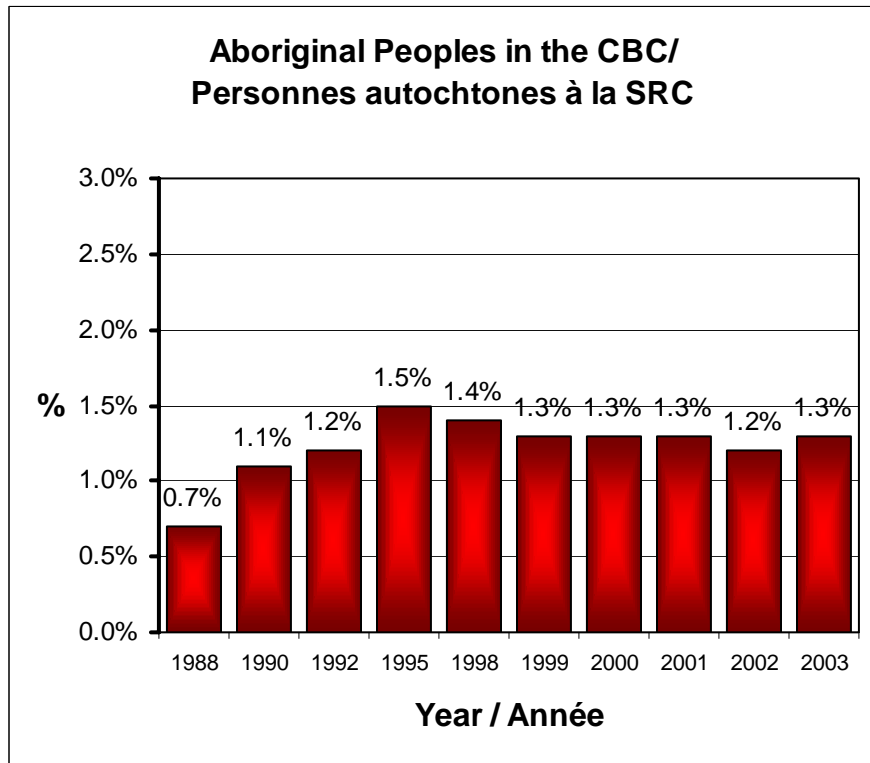
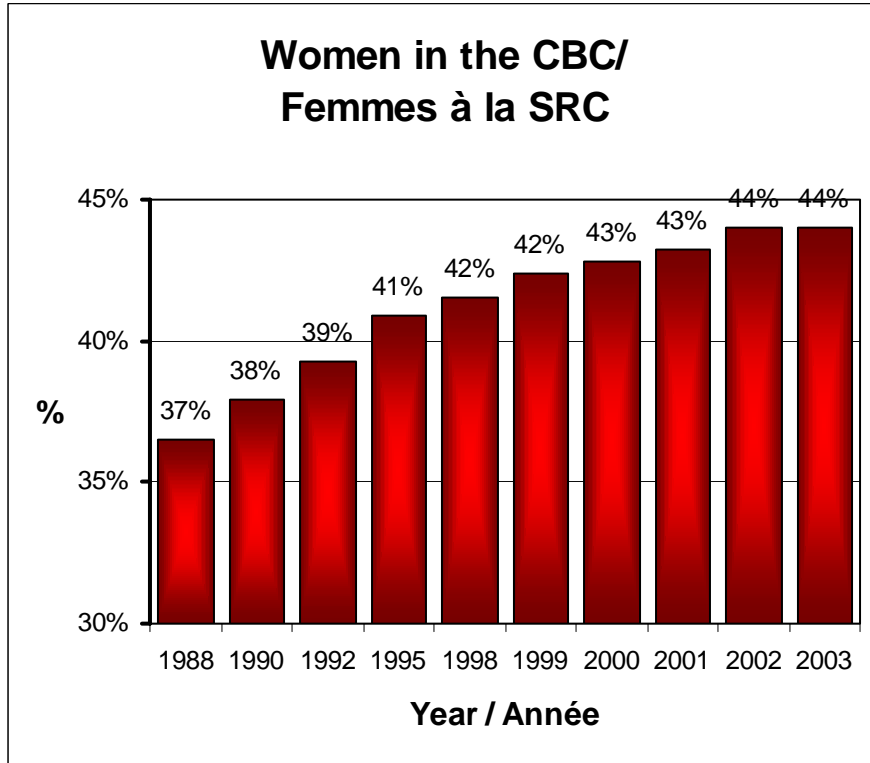
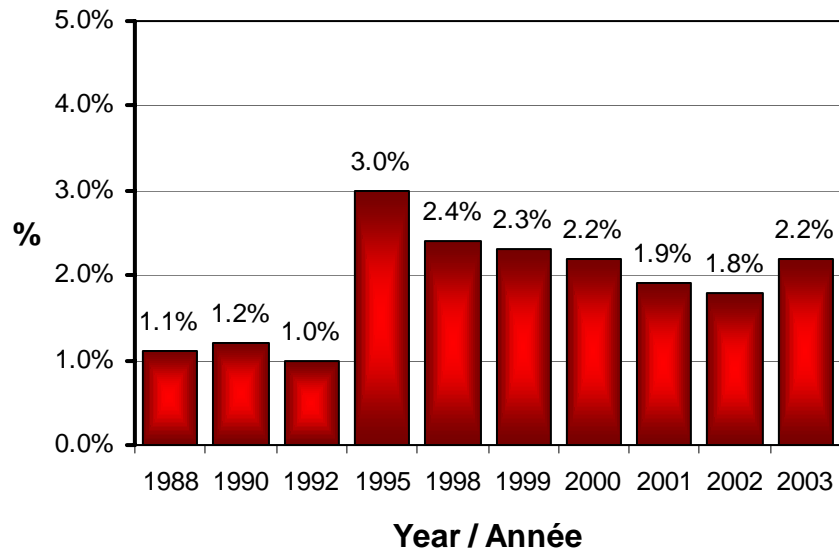


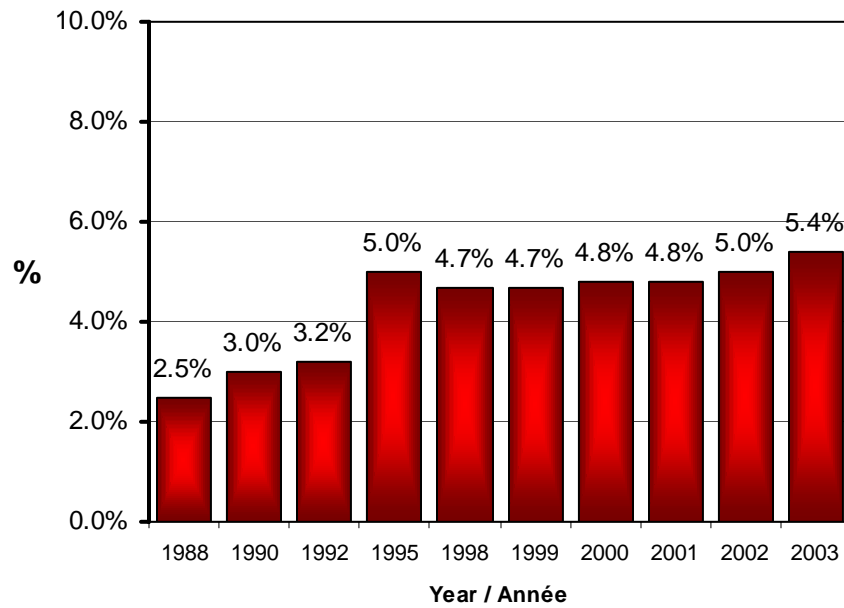
As of December 31, 2003



People with Disabilities in the CBC/ Personnes handicapées à la SRC



Members of Visible Minorities in the CBC/ Membres de minorités visibles à la SRC



Representation of Women in the CBC

Summary of Selected Occupations	1976	1982	1988	1995	2000	2003
	% Women	% Women	% Women	% Women	% Women	% Women
Producers	17%	20%	36%	48%	46%	48%
Announcers-Hosts	11%	18%	29%	40%	40%	44%
Journalists & Other Program Presentation	18%	26%	39%	44%	48%	50%
Technological Occupations	2%	4%	4%	9%	9%	11%
Production, Design & Staging	29%	31%	37%	47%	49%	50%
Management-Officers	10%	18%	30%	38%	48%	50%
Clerical	67%	70%	71%	77%	79%	79%
TOTAL	28%	30%	35%	40%	43%	44%

Note: Excludes casual employees and contractual employees hired for a period of less than 13 weeks.

The statistics exclude employees on long term disability.