

Table 1/Tableau 1
 Respiratory Virus Detections/Isolations for the week ending October 27, 2007 (Reporting Week 200743)
 Détection/isolement de virus des voies respiratoires pour la semaine se terminant le 27 octobre 2007 (Code hebdomadaire 200743)

Reporting Laboratory Laboratoire rapporteur	Flu/Grippe Test	Flu/Grippe A Pos.	Flu/Grippe B Pos.	R.S.V. Test	R.S.V. Pos.	PIV Test	PIV 1 Pos.	PIV 2 Pos.	PIV 3 Pos.	PIV 4 Pos.	Other/Autre PIV Pos.	Adeno Test	Adeno Pos.
Newfoundland./Terre-Neuve	4	0	0	3	0	1	0	0	0	0	0	1	0
Prince Edward Island./ Île-du-Prince-Édouard	4	0	0	6	0	4	0	0	0	0	0	4	1
Nova Scotia/Nouvelle-Écosse	9	0	0	9	0	9	0	0	0	0	0	9	0
New Brunswick/Nouveau-Brunswick	9	0	0	10	0	9	0	0	0	0	0	9	0
Atlantic/Atlantique	26	0	0	28	0	23	0	0	0	0	0	23	1
Région Nord-Est	9	0	0	9	1	0	0	0	0	0	0	0	0
Québec-Chaudière-Appalaches	65	0	0	66	0	48	2	0	0	0	0	65	3
Centre-du-Québec	8	0	0	13	0	2	0	0	0	0	0	2	0
Montréal-Laval	154	0	0	242	8	181	4	3	1	0	0	196	5
Ouest du Québec	4	0	0	3	0	0	0	0	0	0	0	0	0
Montérégie	2	0	0	5	1	0	0	0	0	0	0	0	0
Province of/de Québec	242	0	0	338	10	231	6	3	1	0	0	263	8
Ottawa P.H.L.													
CHEO/HEEO - Ottawa													
Toronto Medical Laboratory													
Kingston	14	0	0	14	0	14	1	1	0	0	0	14	1
C.P.H.L. - Toronto	164	0	0	177	1	149	9	3	0	0	0	149	0
Sick Kids'Hospital - Toronto	76	0	0	76	5	76	0	4	0	1	0	76	0
Sunnybrook & Women's College HSC	11	0	0	11	0	11	0	0	0	0	0	11	0
Sault Ste. Marie	1	0	0	1	0	1	0	0	0	0	0	1	0
Timmins	1	0	0	1	0	1	0	0	0	0	0	1	0
St. Joseph's - London	21	0	0	21	1	21	0	1	0	0	0	21	0
London P.H.L.	30	0	0	30	1	30	6	0	0	0	0	30	0
Orillia P.H.L.	23	0	0	23	0	23	0	0	0	0	0	23	1
Windsor	4	0	0	4	0	4	0	0	0	0	0	4	0
Thunder Bay													
Sudbury P.H.L.	6	0	0	6	0	6	1	0	0	0	0	6	0
Hamilton P.H.L.	8	0	0	10	0	8	1	0	0	0	0	8	0
Peterborough P.H.L.	13	0	0	13	0	13	3	0	0	0	0	13	0
Province of/de l'Ontario	372	0	0	387	8	357	21	9	0	1	0	357	2
Manitoba	39	0	0	41	0	38	0	0	0	0	0	38	2
Regina	70	0	0	70	1	70	1	1	0	0	0	70	2
Saskatoon	28	0	0	19	1	28	0	0	0	0	3	28	2
Province of/de la Saskatchewan	98	0	0	89	2	98	1	1	0	0	3	98	4
Calgary	241	0	0	102	0	132	0	0	0	0	0	110	2
Edmonton	216	0	0	216	0	216	0	0	0	0	15	123	3
Province of/de l'Alberta	457	0	0	318	0	348	0	0	0	0	15	233	5
Prairies	594	0	0	448	2	484	1	1	0	0	18	369	11
British Columbia/Colombie-Britannique	34	0	0	34	0	34	0	0	0	0	0	34	0
CANADA	1268	0	0	1235	20	1129	28	13	1	1	18	1046	22

Also available at: <http://www.phac-aspc.gc.ca/bid-bmi/dsd-dsm/rvdi-divr/index-html>

Aussi disponible sur le site: http://www.phac-aspc.gc.ca/bid-bmi/dsd-dsm/rvdi-divr/index_f.html

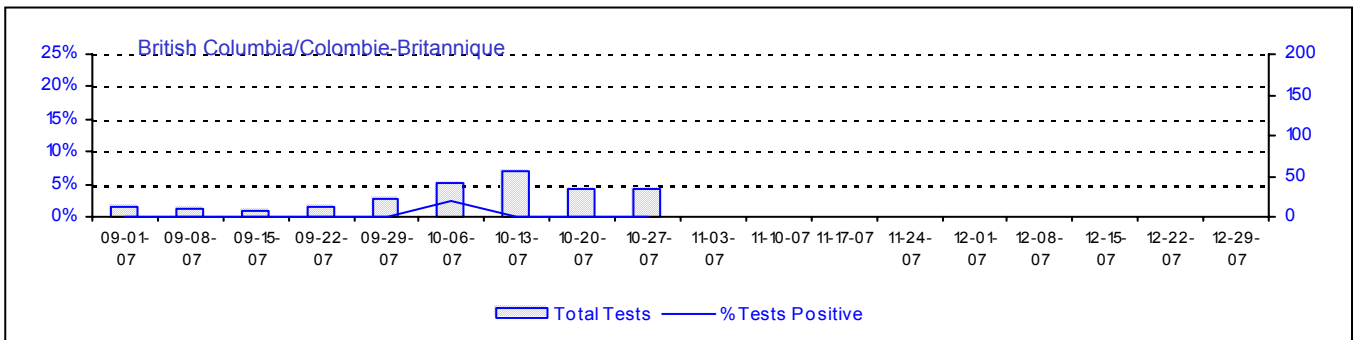
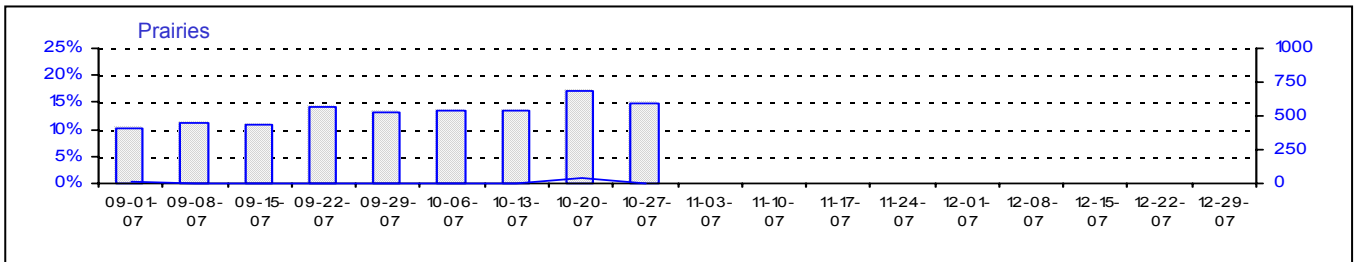
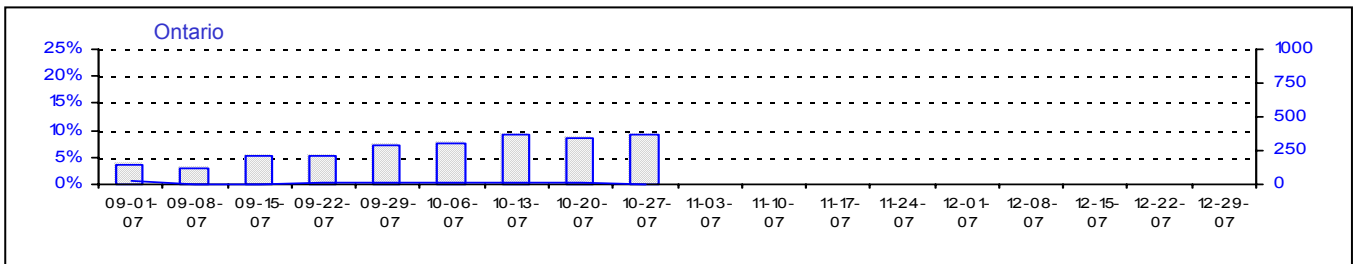
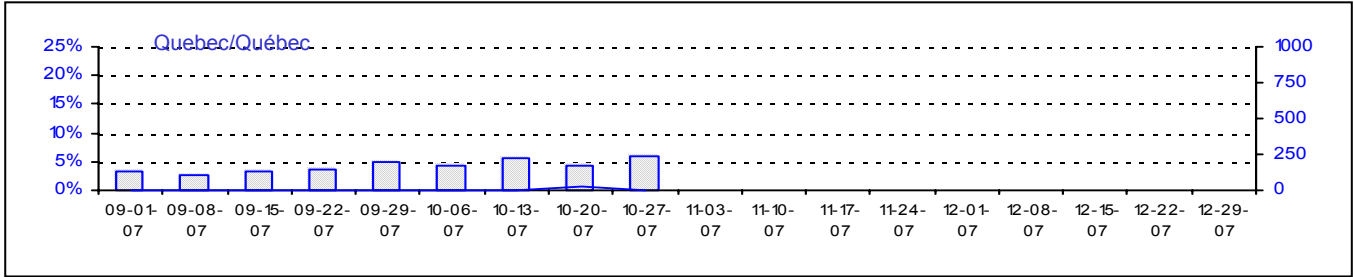
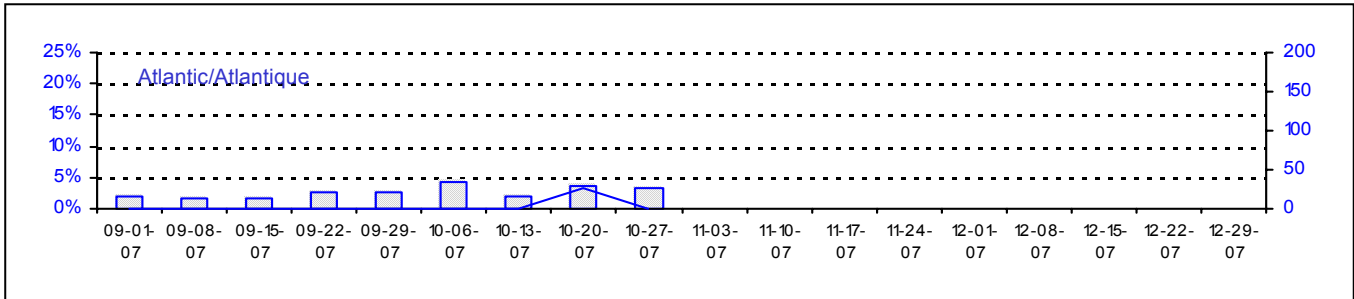
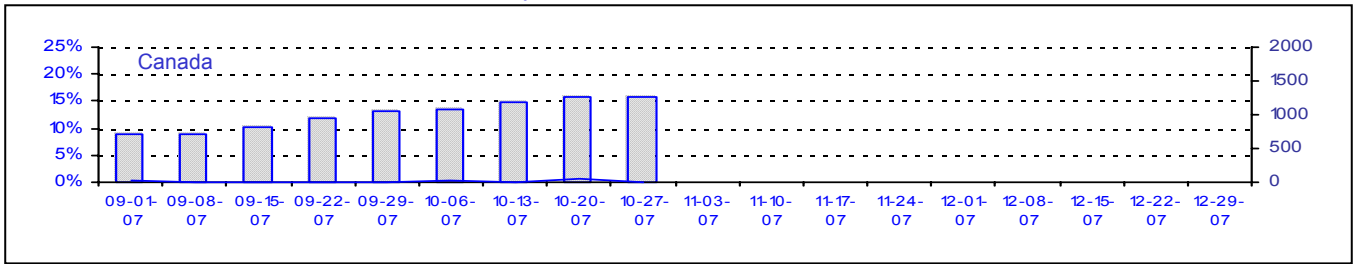
Table 2/Tableau 2
Respiratory Virus Detections/Isolations for the period August 26, 2007 - October 27, 2007
Détection/isolement de virus des voies respiratoires pour la période du 26 août 2007 - 27 octobre 2007
(Reporting Weeks 200735 -200743/Code hebdomadaire 200735-200743)

Reporting Laboratory Laboratoire rapporteur	Flu/Grippe Test	Flu/Grippe A Pos.	Flu/Grippe B Pos.	R.S.V. Test	R.S.V. Pos.	PIV Test	PIV 1 Pos.	PIV 2 Pos.	PIV 3 Pos.	PIV 4 Pos.	Other/Autre PIV Pos.	Adeno Test	Adeno Pos.
Newfoundland./Terre-Neuve	25	0	0	17	0	3	0	0	0	0	0	4	0
Prince Edward Island./ Île-du-Prince-Édouard	20	0	0	23	0	20	0	1	0	0	0	20	1
Nova Scotia/Nouvelle-Écosse	85	0	1	85	0	85	0	0	0	0	0	85	2
New Brunswick/Nouveau-Brunswick	62	0	0	66	0	61	0	0	0	0	0	61	2
Atlantic/Atlantique	192	0	1	191	0	169	0	1	0	0	0	170	5
Région Nord-Est	28	0	0	47	7	0	0	0	0	0	0	0	0
Québec-Chaudière-Appalaches	381	0	0	461	0	330	7	2	1	0	0	436	16
Centre-du-Québec	62	0	0	75	0	36	3	0	0	0	0	35	0
Montréal-Laval	1032	1	0	1559	34	1371	52	9	6	0	0	1507	25
Ouest du Québec	13	0	0	23	1	0	0	0	0	0	0	0	0
Montréal	5	0	0	26	3	0	0	0	0	0	0	0	0
Province of/de Québec	1521	1	0	2191	45	1737	62	11	7	0	0	1978	41
Ottawa P.H.L.	15	0	0	0	0	0	0	0	0	0	0	0	0
CHEO/HEEO - Ottawa													
Kingston	86	0	0	86	0	86	11	1	0	0	0	86	1
Toronto Medical Laboratory	105	0	0	105	1	105	0	1	3	0	0	105	0
C.P.H.L. - Toronto	899	5	1	963	8	838	38	7	2	0	0	838	7
Sick Kids' Hospital - Toronto	438	0	0	438	8	438	25	7	0	1	0	438	5
Sunnybrook & Women's College HSC	100	0	0	100	0	90	0	0	0	0	0	100	0
Sault Ste. Marie	3	0	0	3	0	3	0	0	0	0	0	3	0
Timmins	23	0	0	23	0	23	0	0	0	0	0	22	0
St.Joseph's-London	80	0	0	80	4	80	0	1	0	0	0	80	1
London P.H.L.	203	0	0	203	1	203	19	0	1	0	0	203	1
Orillia P.H.L.	145	0	0	145	0	145	2	1	0	0	0	145	4
Windsor	52	0	0	52	0	52	2	0	0	0	0	52	0
Thunder Bay	17	0	0	12	0	62	0	0	0	0	0	17	0
Sudbury P.H.L.	49	0	0	49	0	49	2	0	0	0	0	49	0
Hamilton P.H.L.	60	0	0	70	0	60	1	0	0	0	0	60	0
Peterborough P.H.L.	93	0	0	93	0	93	6	1	0	0	0	93	0
Province of/de l'Ontario	2368	5	1	2422	22	2327	106	19	6	1	0	2291	19
Manitoba	318	0	0	334	0	313	0	0	0	0	0	313	19
Regina	522	0	0	522	3	522	4	3	0	0	0	522	16
Saskatoon	140	0	0	116	3	140	0	0	0	0	5	140	5
Province of/de la Saskatchewan	662	0	0	638	6	662	4	3	0	0	5	662	21
Calgary	1997	7	0	914	0	1044	0	0	0	0	8	944	11
Edmonton	1758	1	0	1742	4	1775	0	0	0	0	53	1101	32
Province of/de l'Alberta	3755	8	0	2656	4	2819	0	0	0	0	61	2045	43
Prairies	4735	8	0	3628	10	3794	4	3	0	0	66	3020	83
British Columbia/Colombie-Britannique	229	1	0	229	1	229	0	0	0	0	0	229	0
CANADA	9045	15	2	8661	78	8256	172	34	13	1	66	7688	148

Also available at: <http://www.phac-aspc.gc.ca/bid-bmi/dsd-dsm/rvdi-divr/index.html>

Aussi disponible sur le site: http://www.phac-aspc.gc.ca/bid-bmi/dsd-dsm/rvdi-divr/index_f.html

Positive Influenza Tests (%) in Canada by Region by Week of Report
 Détection du virus grippal au Canada, tests positifs (%) par région
 par semaine de déclaration

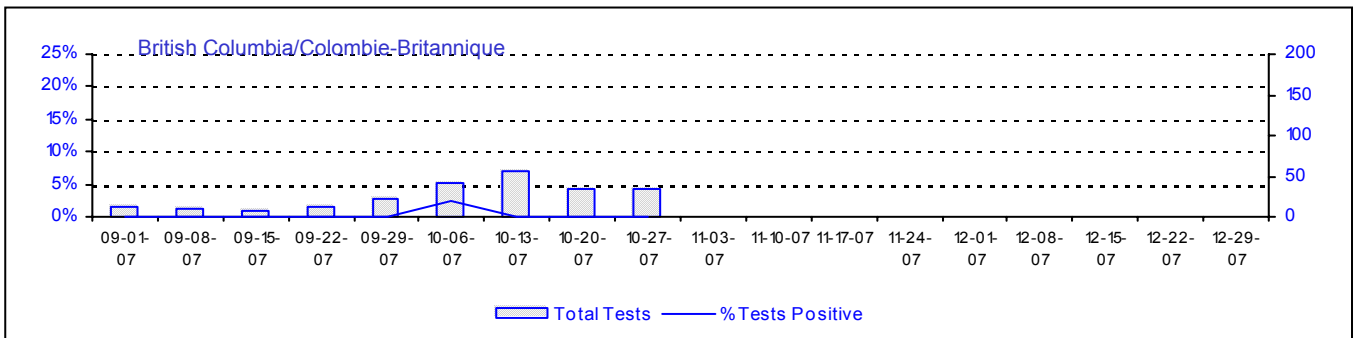
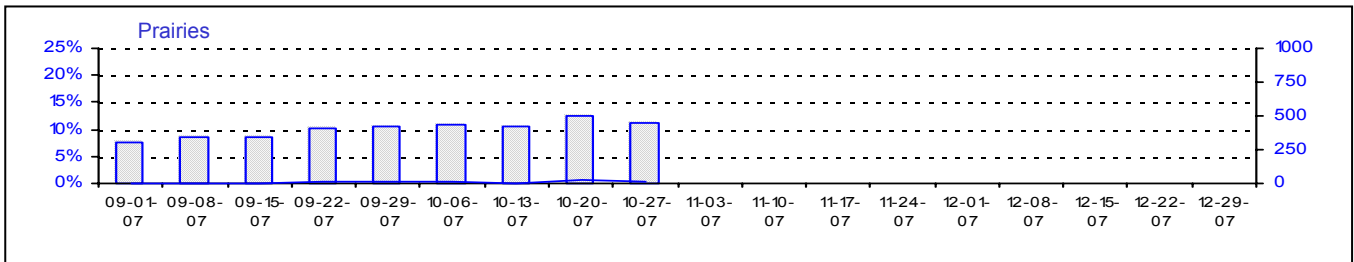
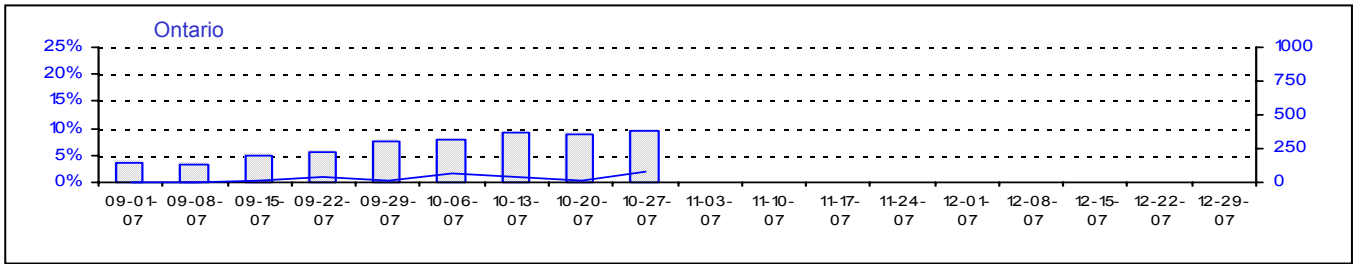
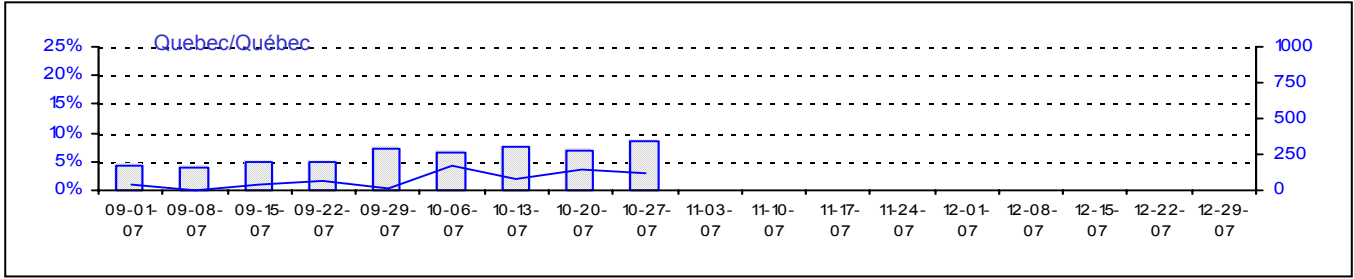
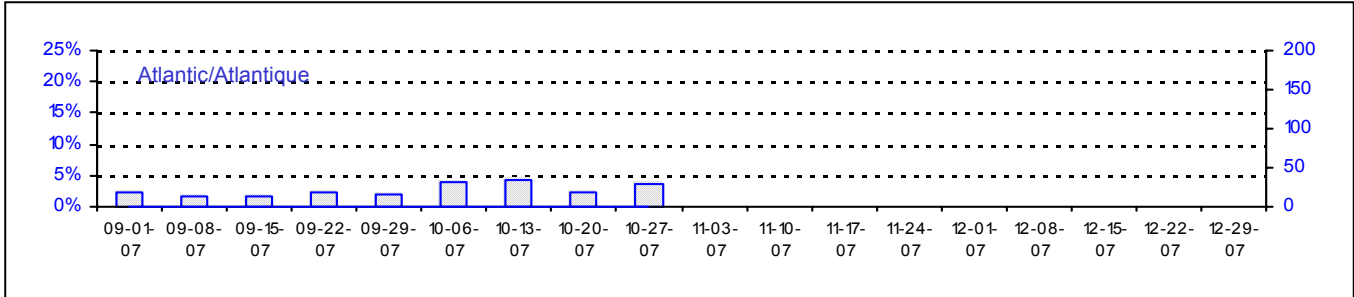
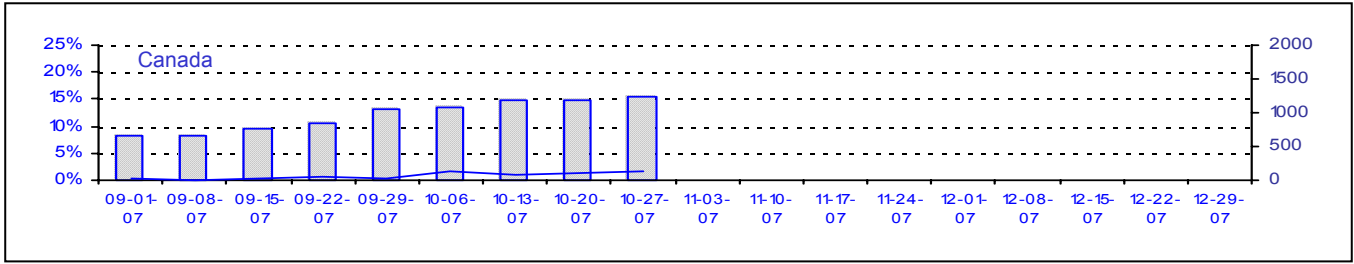


Total Tests Total

% Tests Positive/Positifs

Legend: Total Tests (grey bar), % Tests Positive (blue line)

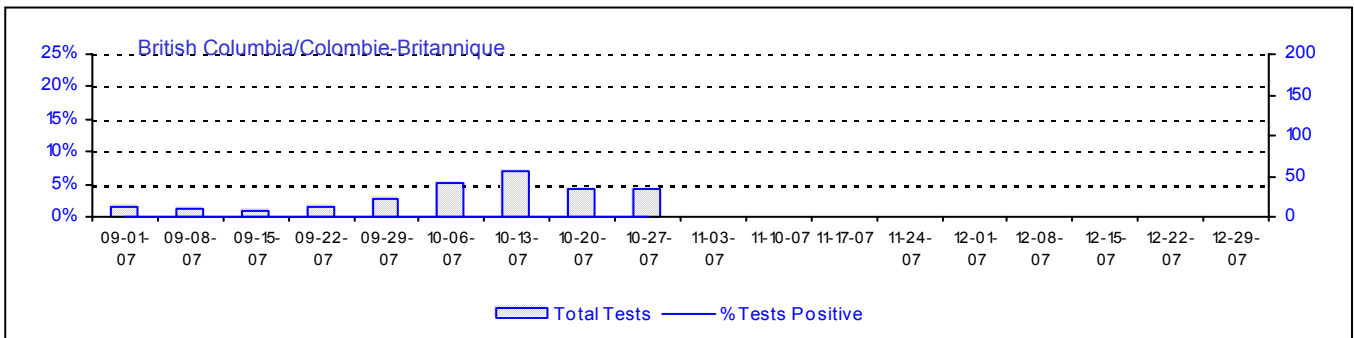
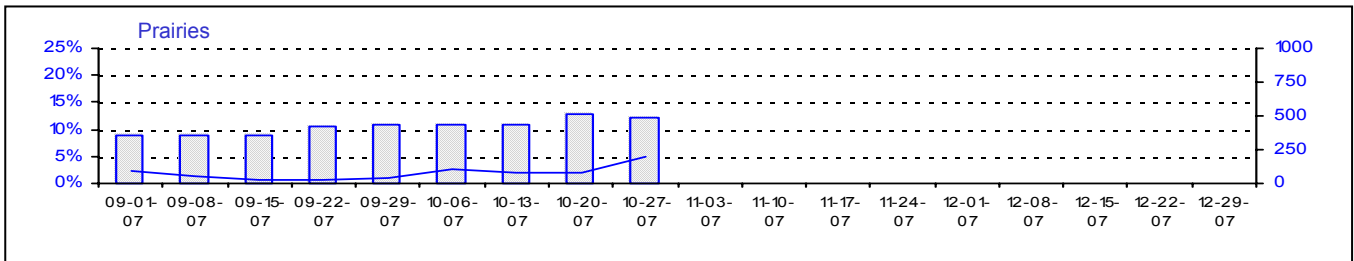
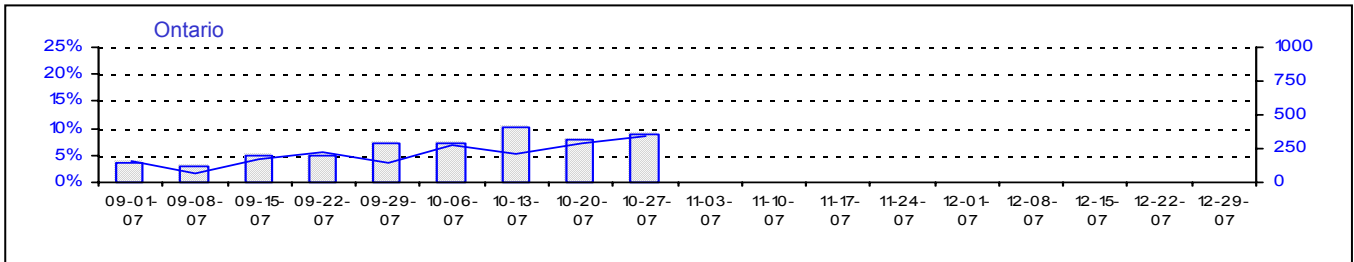
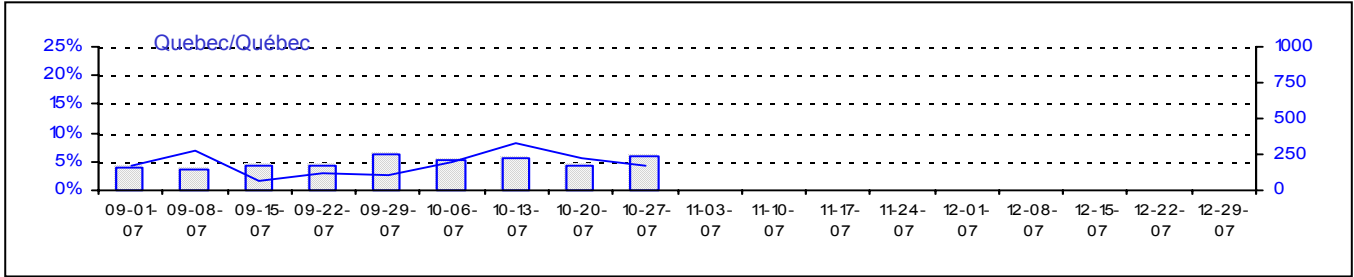
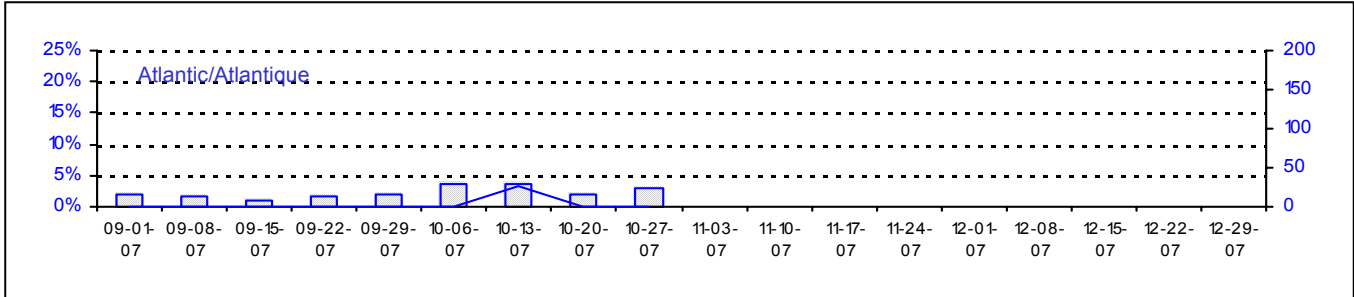
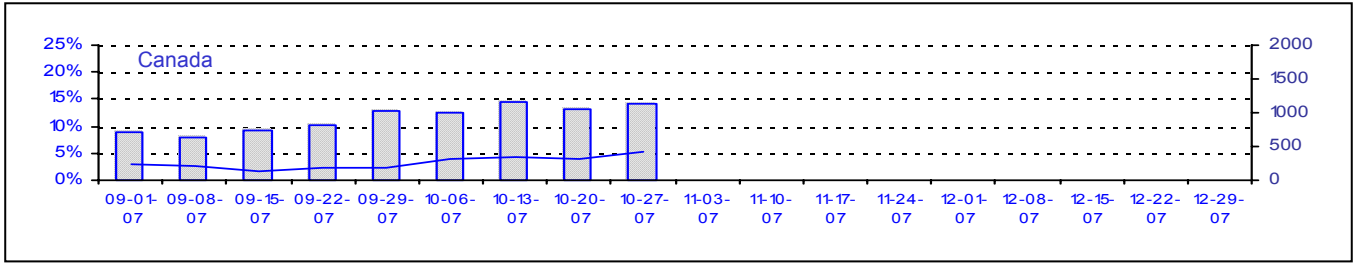
Positive RSV Tests (%) in Canada by Region by Week of Report
 Détection Du virus respiratoire syncytial au Canada, tests positifs (%) par région
 par semaine de déclaration



Total Tests Total

Legend: Total Tests (grey bar), % Tests Positive (blue line)

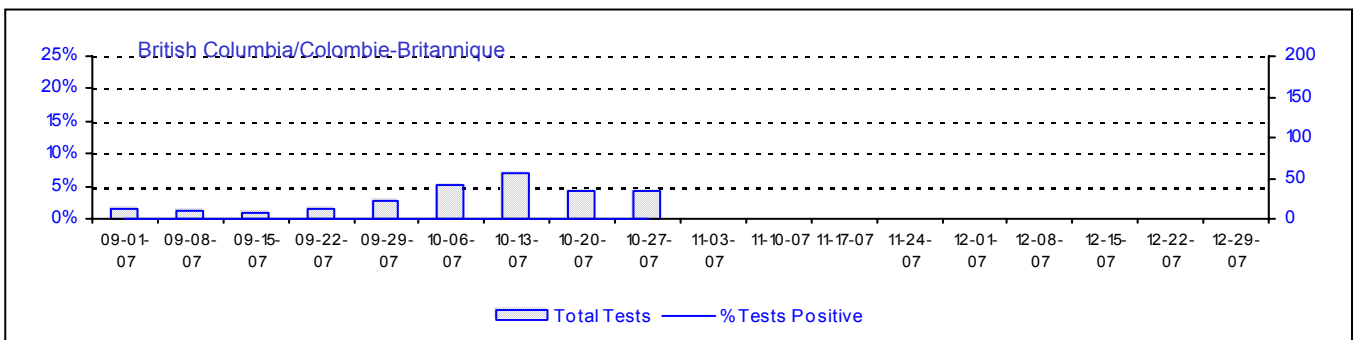
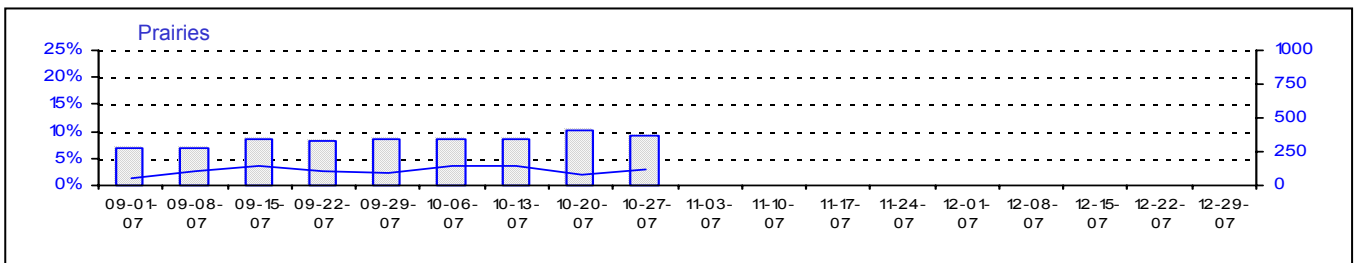
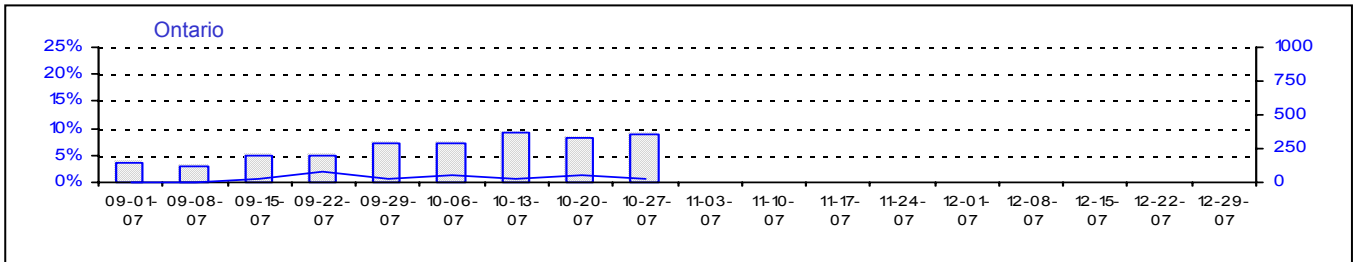
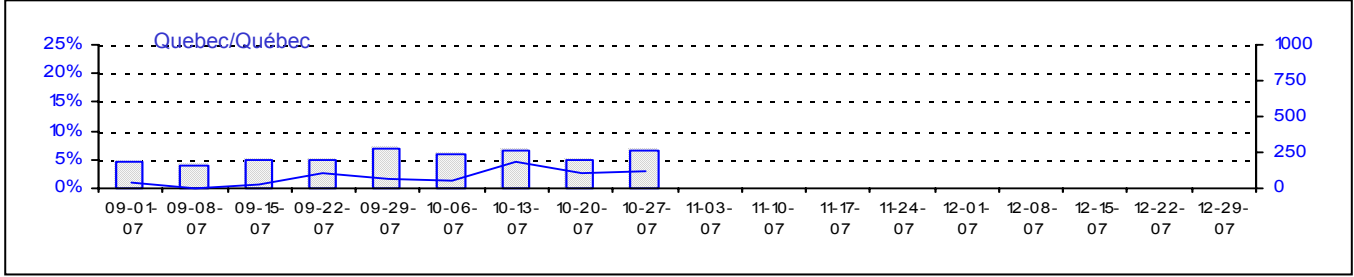
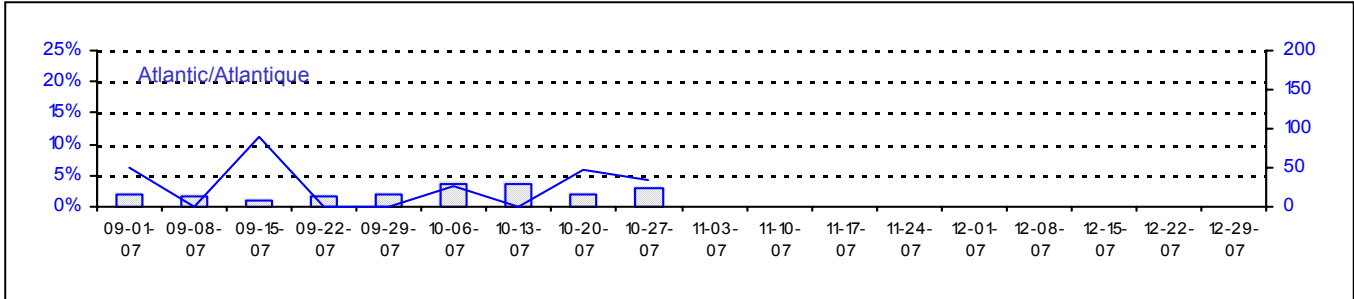
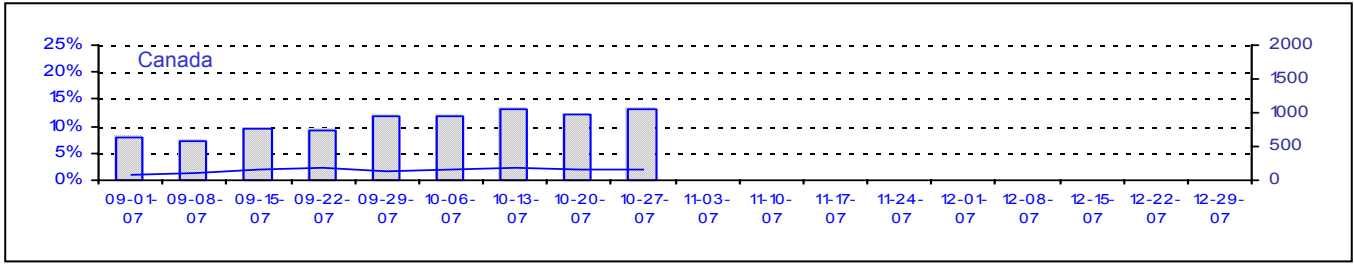
Positive Parainfluenza Tests (%) in Canada by Region by Week of Report
 Détection du virus parainfluenza au Canada, tests positifs (%) par région
 par semaine de déclaration



Total Tests Total

█ Total Tests — % Tests Positive

Positive Adenovirus Tests (%) in Canada by Region by Week of Report
 Détection des adénovirus au Canada, tests positifs (%) par région
 par semaine de déclaration



Total Tests Total

% Tests Positive/Positifs

Legend: Total Tests (light blue bar), % Tests Positive (dark blue line)