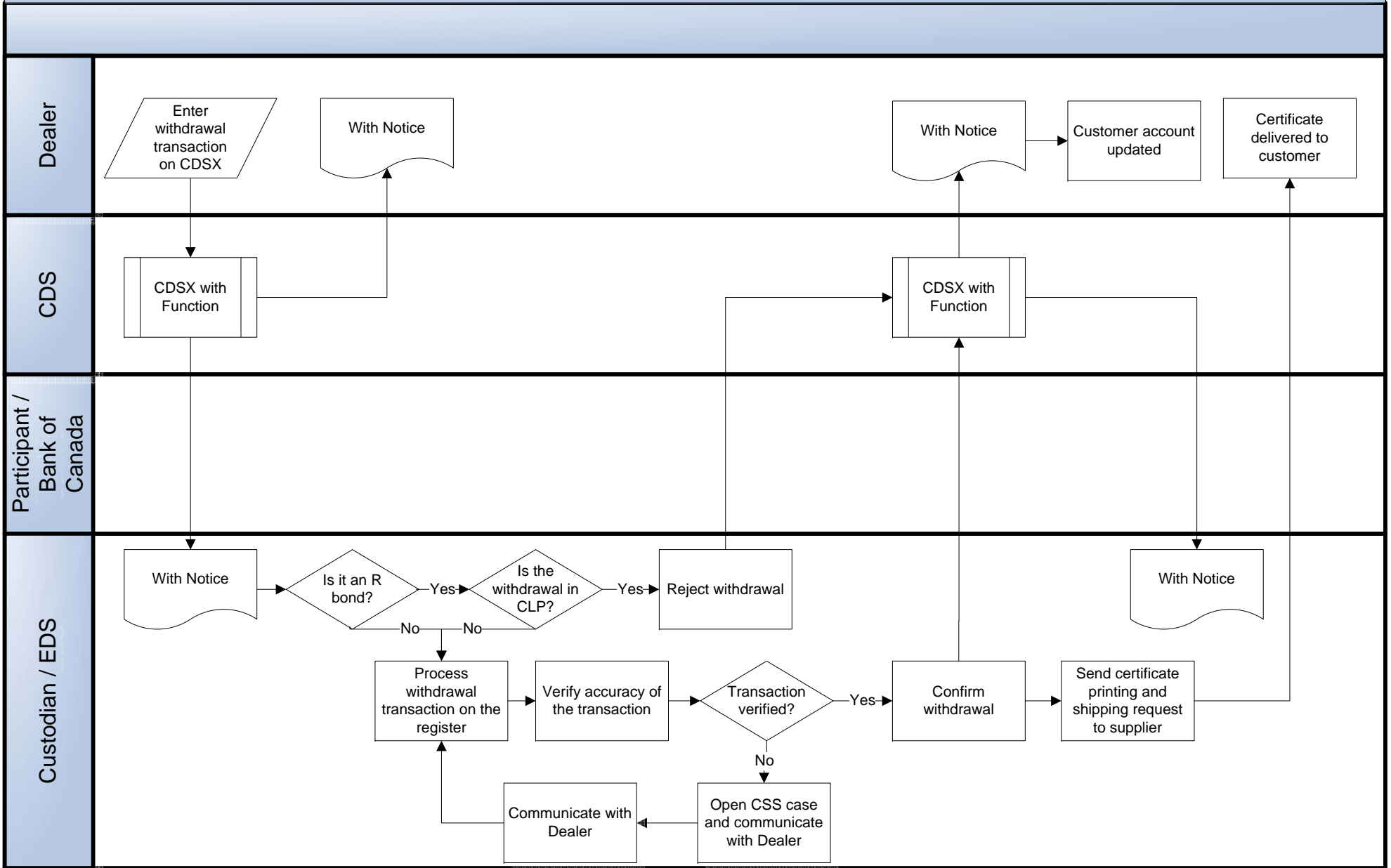


# CDSX Withdrawals (Non-cert to Cert) – Products CSB and CPB



Withdrawal requests for R bonds received by the custodian in the product's closed loan period (CLP) will be rejected by the custodian. Turnaround time for customer account update is 25 days. In the event that a Withdrawal is setup in error, contact 1.613.782.8039 to request that it be rejected.