

NWT PlainTalk

On Land and Self-government

Mapping Project Reveals Gameti's Past

As Aboriginal groups build their communities' future through land and self-government agreements, it is important that they have accurate information about the land and resources that they are negotiating. This past summer, the Gameti First Nation worked in partnership with the Northwest Territories Geoscience Office (Outreach Program) to conduct a two-week geological mapping project. Approximately 15 square km of the Gameti community and surrounding area was observed and recorded for not only its rock, but also its flora, fauna and interesting historical landmarks.

A deep hole in the rock at Faber Lake was interpreted as being formed by glacial meltwater. Several thousand years ago when the glaciers retreated from the Gameti area, meltwater beneath the glacier worked its way down through a fracture, or series of fractures, in the rock. The force of the water spun loose rocks around, which over time ground out the sides of the hole.

Another glacial feature in the area is an esker, which is a long narrow ridge or mound of sand, gravel, and boulders that were the remains of rivers that once flowed under a glacier. Gameti is built on top of an esker - so there is no shortage of sand!



Photo courtesy of Northwest Territories Geoscience Office (Outreach Program)

"This mysterious hole found at Faber Lake was created by a glacier thousands of years ago! The Northwest Territories Geoscience Office (Outreach Program) investigated this hole's history and other interesting rock and land formations at the community of Gameti this past summer."

continued on page 4

Mapping the Big Picture

Inside this issue are poster-sized maps that show settled land, resource and self-government agreements with Aboriginal groups in the Northwest Territories, and Interim Measure Agreement (IMA) areas for on-going negotiations. These maps are particularly helpful for illustrating the on-going negotiations in relation to the NWT's physical land features; by seeing the land from a bird's-eye view, people can see the big picture of how

communities, lakes, rivers and claims borders relate to one another.

Working with land claims maps can be especially challenging when some of the negotiations are not yet finalized. With negotiations changing, it is difficult to create a map that is 100% accurate. The maps in this issue are for illustration purposes only and are only meant to give people a rough idea of what a claims area under negotiation

looks like as a picture. Since this type of information is very valuable to a wide variety of clients (including industry, Aboriginal groups, communities and government), it is important to produce these maps as an interim visual tool. Please feel free to pin them on your wall!



The purpose of our newsletter is to keep you informed on the progress of land and self-government negotiations in the Northwest Territories, and to provide some answers to frequently asked questions. We also feature the people and communities involved in negotiations, celebrate milestones, and announce upcoming events. On behalf of the Department of Indian Affairs and Northern Development (DIAND), we hope you will find our newsletter informative and easy to read.

In this issue...

MAP - Current Negotiations with Aboriginal Groups

MAP - Finalized Aboriginal Agreements

Just plain fun

Our vision

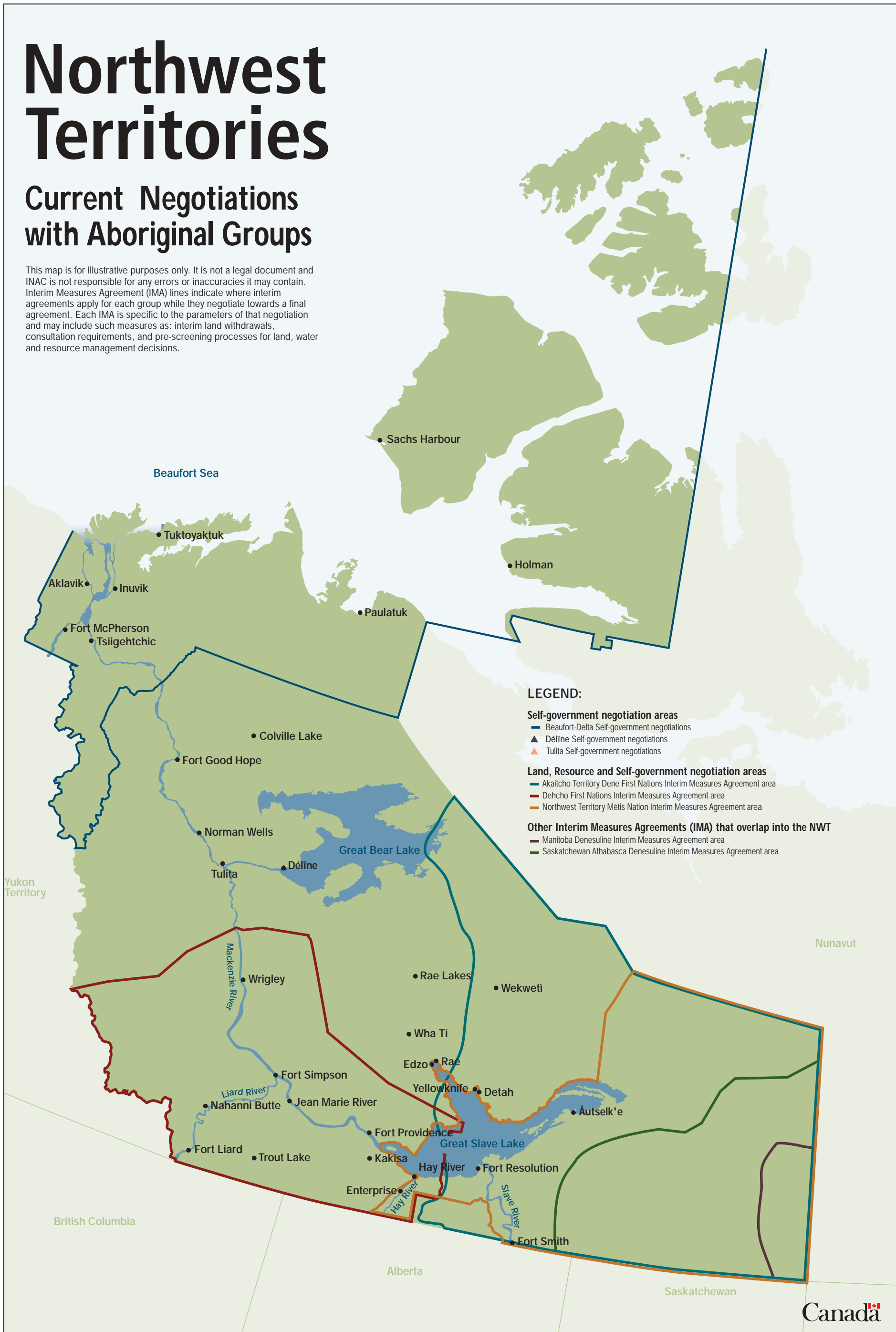
Got something to tell us?



Northwest Territories

Current Negotiations with Aboriginal Groups

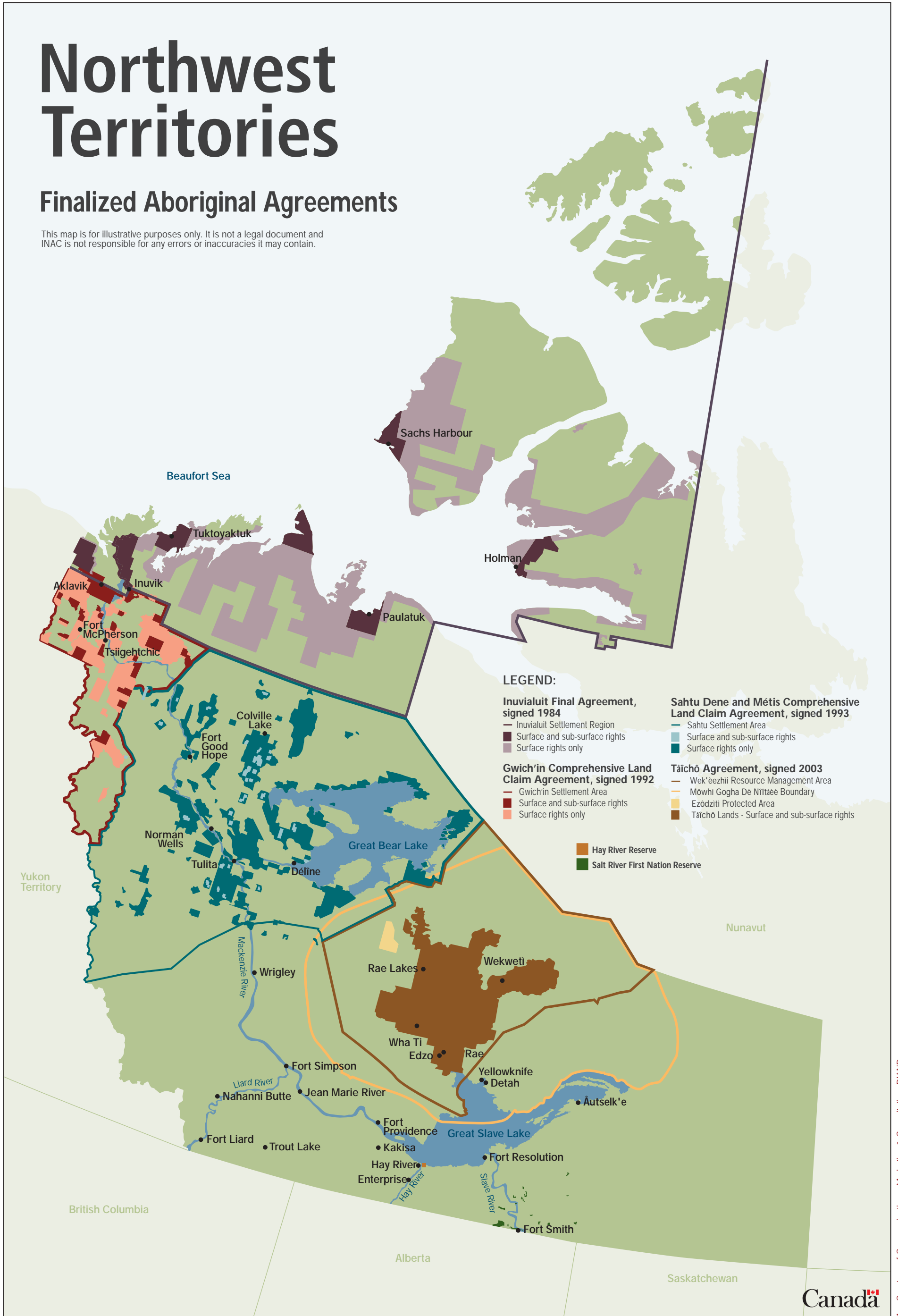
This map is for illustrative purposes only. It is not a legal document and INAC is not responsible for any errors or inaccuracies it may contain. Interim Measures Agreement (IMA) lines indicate where interim agreements apply for each group while they negotiate towards a final agreement. Each IMA is specific to the parameters of that negotiation and may include such measures as: interim land withdrawals, consultation requirements, and pre-screening processes for land, water and resource management decisions.



Northwest Territories

Finalized Aboriginal Agreements

This map is for illustrative purposes only. It is not a legal document and INAC is not responsible for any errors or inaccuracies it may contain.



Gameti Records Earthquakes

continued from page 1

Roxanne Mantla, Jennifer Wehrade, and Alphonse Apples were three Gameti community members on the geology team along with Donna Schreiner, Beth Fischer (NWT Geoscience Office) and Diane Baldwin (Resources Wildlife and Economic Development). They learned how to collect, compile and interpret geologic, physiographic and cultural information, as well as how to use a compass and GPS tracking device. Alphonse Apples is one of Gameti's prominent Elders, and his family was one of the first families to move to Gameti around 1965.

Once the data was collected, a poster was created with input from all team members that provides information about the geology surrounding Gameti. This poster was distributed within the community. It is available for use by the schools as a learning tool, and for general information to the community and for tourism. Donna Schreiner, one of the NWT Geoscience Office geologists, returned to Gameti this winter to discuss the mapping results with the community and school.

In addition to mapping bedrock and surface features, a teleseismic station was installed that will aid in mapping layers beneath the surface up to 300 km in depth! The instrument senses earthquakes from around the world, recording how seismic waves bend through different layers within the earth. Its graphics display of earthquake ground movement can be viewed on the web at <http://www.polarisnet.ca/data/plots>.

The Northwest Territories Geoscience Office is very interested in mapping other communities. Your community can also find out about it's rock and land formations by contacting the Northwest Territories Geoscience Office:

Phone: (867) 669-2636 or check out their website at www.nwtgeoscience.ca.

OUR VISION

The NWT region of DIAND is a respected partner in a strong and healthy Northwest Territories.

We strive for:

- respectful, effective relationships with Aboriginal people;
- creating and enhancing opportunities for all Northerners;
- responsible resource development in healthy ecosystems;
- northern control over northern resources;
- responsive & accountable northern government as partners;
- national initiatives that reflect the interests of all Northerners.

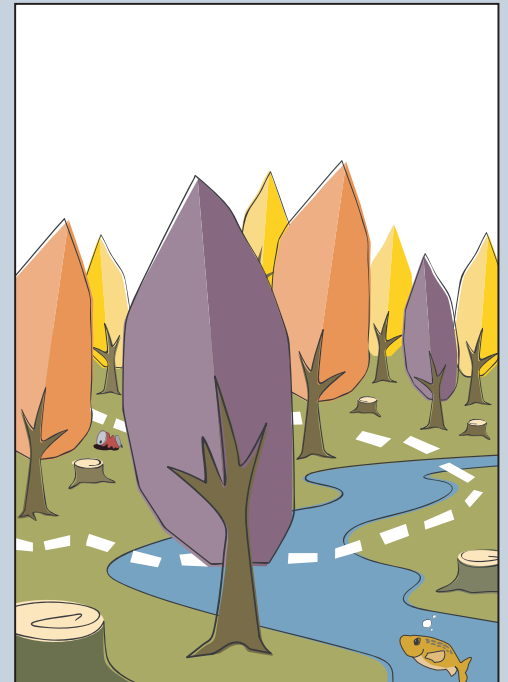
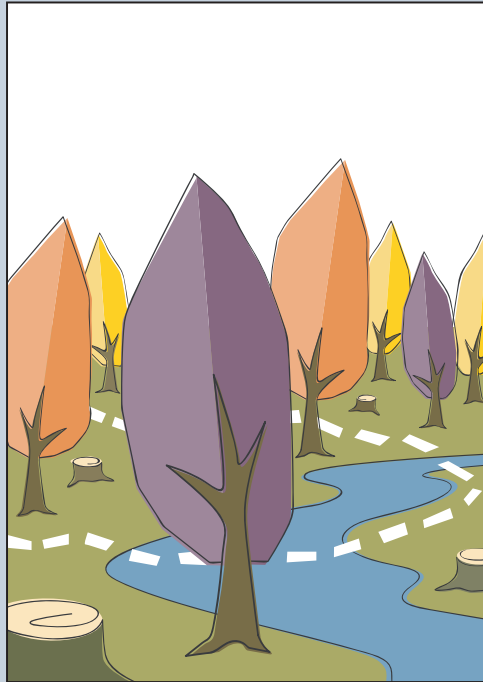
Just plain fun!



What is a Land Claim?

An agreement that describes who owns the land and the use of its resources.

Compare the two pictures below. There are 10 things slightly different between them both - try and find these differences!



Look for the answer in the next edition of Plain Talk

Got something to tell us?

Here's who to contact:

Leah Laxdal
DIAND Communications
P.O. Box 1500, Yellowknife, NWT, X1A 2R3
Phone: (867) 669-2576 Fax: (867) 669-2715
e-mail: laxdall@inac.gc.ca

Published under the authority of the Minister of Indian Affairs and Northern Development Ottawa, 2005. 1-800-567-9604 TTY only 1-886-553-0554

Print version:
QS-Y137-009-EE-A1 ISSN 1708-0002
Electronic version: www.ainc-inac.gc.ca
http://www.ainc-inac.gc.ca/nt/pt/index_e.html
QS-Y137-009-EE-A1 ISSN 1708-0010

© Minister of Public Works and Government Services Canada

Cette publication peut aussi être obtenue en français sous le titre: Franc parler

Plain Talk on Land and Self-government is produced by the Department of Indian Affairs and Northern Development in the NWT to help northerners understand these concepts, how they work, and what they mean in our day-to-day lives. It is not a legal document.

