

***SECTORAL DISTRIBUTION
OF LANDINGS***

MAGDALEN ISLANDS

- 20A Landings in the Magdalen Islands (Quantity)
- 20B Landings in the Magdalen Islands (Value)
- 20.1A Supplementary purchase slips in the Magdalen Islands (Quantity)
- 20.1B Supplementary purchase slips in the Magdalen Islands (Value)
- 21 Landings average price by species in the Magdalen Islands (excluding supplementary purchase slips), 1998 to 2005

List of figures

- Quantity and value of groundfish landings from 1998 to 2005 for the Magdalen Islands
- Quantity and value of cod landings from 1998 to 2005 for the Magdalen Islands
- Quantity and value of redfish landings from 1998 to 2005 for the Magdalen Islands
- Quantity and value of Greenland halibut landings from 1998 to 2005 for the Magdalen Islands
- Quantity and value of pelagic species landings from 1998 to 2005 for the Magdalen Islands
- Quantity and value of herring landings from 1998 to 2005 for the Magdalen Islands
- Quantity and value of molluscs and crustaceans landings from 1998 to 2005 for the Magdalen Islands
- Quantity and value of sea scallops landings from 1998 to 2005 for the Magdalen Islands
- Quantity and value of lobster landings from 1998 to 2005 for the Magdalen Islands
- Quantity and value of snow crab landings from 1998 to 2005 for the Magdalen Islands

TABLE 20A

MAGDALEN ISLANDS LANDINGS, 1998 TO 2005

(Quantity in rounded metric tons, live weight)

SPECIES	1998	1999	2000	2001	2002	2003	2004	2005
Cod.....	272	502	449	331	433	53	161	152
Haddock.....	°	°	°	°	°	°	°	°
Redfish.....	102	235	183	605	204	221	108	175
Atlantic Halibut.....	14	19	9	10	9	15	25	33
American Plaice.....	97	304	285	182	142	78	122	63
Greysole.....	11	43	67	81	153	126	165	190
Winter Flounder.....	63	84	217	178	100	137	152	178
Unspecified Flounders.....	29	°	3	°	2	-	1	1
Greenland Halibut.....	°	4	3	7	3	16	2	21
White Hake.....	3	°	1	4	1	2	1	2
Catfish.....	-	°	-	°	°	°	°	°
Other groundfish.....	195	348	371	332	230	175	203	221
Total groundfish.....	785	1 538	1 590	1 732	1 278	824	939	1 035
Herring.....	3 115	3 304	4 239	2 727	1 796	2 447	3 065	1 048
Mackerel.....	2 967	4 645	1 314	2 718	3 664	3 833	970	695
Bluefin Tuna.....	-	-	-	-	-	-	-	-
Eels.....	-	-	-	-	-	°	°	°
Salmon.....	-	-	-	-	-	-	-	-
Smelts.....	-	-	-	-	-	-	-	-
Capelin.....	-	-	-	-	-	-	-	-
Other pelagic and estuarian species.....	46	190	147	114	26	21	10	1
Total pelagic and estuarian species.....	6 128	8 139	5 701	5 558	5 486	6 300	4 044	1 743
Soft Shell Clams.....	-	-	-	-	-	-	-	°
Quahaugs Clams.....	-	-	-	-	-	-	-	-
Mussels.....	-	-	-	-	-	-	-	-
Sea Scallops.....	355	257	291	161	126	245	141	242
Whelks.....	-	-	-	-	20	388	369	442
Lobsters.....	1 904	1 883	2 024	2 209	2 055	2 110	2 391	2 365
Shrimp.....	-	-	-	-	-	-	-	2
Snow Crabs.....	943	973	1 411	1 021	1 553	1 408	2 407	2 147
Other molluscs and crustaceans.....	639	574	688	671	943	1 066	897	1 119
Total mollusc and crustacean.....	3 840	3 687	4 414	4 062	4 697	5 217	6 205	6 317
Other items.....	443	°	-	-	°	6	°	-
Total.....	11 197	13 364	11 705	11 353	11 461	12 347	11 188	9 094

Note: Total can have minor differences caused by the rounding factors.

TABLE 20B

MAGDALEN ISLANDS LANDINGS, 1998 TO 2005

(Value in thousands of dollars)

SPECIES	1998	1999	2000	2001	2002	2003	2004	2005
Cod.....	241	661	481	320	437	66	188	192
Haddock.....	°	°	°	°	°	°	°	°
Redfish.....	118	200	154	505	165	174	86	154
Atlantic Halibut.....	74	104	49	53	55	84	148	186
American Plaice.....	82	282	260	169	114	53	98	48
Greysole.....	11	55	59	98	174	159	182	195
Winter Flounder.....	41	61	153	117	61	100	104	155
Unspecified Flounders.....	19	°	2	°	-	-	°	°
Greenland Halibut.....	°	4	4	9	5	30	3	37
White Hake.....	1	°	1	1	°	1	1	1
Catfish.....	-	°	-	°	°	°	°	°
Other groundfish.....	111	227	223	220	127	127	145	175
Total groundfish.....	698	1 594	1 386	1 494	1 137	793	955	1 145
Herring.....	533	535	697	424	429	630	794	364
Mackerel.....	1 443	1 598	616	1 187	1 387	1 581	386	393
Bluefin Tuna.....	-	-	-	-	-	-	-	-
Eels.....	-	-	-	-	-	°	°	°
Salmon.....	-	-	-	-	-	-	-	-
Smelts.....	-	-	-	-	-	-	-	-
Capelin.....	-	-	-	-	-	-	-	-
Other pelagic and estuarian species.....	17	62	87	76	18	13	7	1
Total pelagic and estuarian species.....	1 994	2 196	1 400	1 687	1 834	2 223	1 186	758
Soft Shell Clams.....	-	-	-	-	-	-	-	°
Quahaugs Clams.....	-	-	-	-	-	-	-	-
Mussels.....	-	-	-	-	-	-	-	-
Sea Scallops.....	881	616	652	277	229	469	255	479
Whelks.....	-	-	-	-	13	346	336	446
Lobsters.....	17 794	21 363	24 826	28 379	29 082	27 967	31 684	33 217
Shrimp.....	-	-	-	-	-	-	-	3
Snow Crabs.....	3 169	5 454	8 251	4 532	8 348	8 795	16 320	9 168
Other molluscs and crustaceans.....	393	379	549	590	641	772	728	924
Total mollusc and crustacean.....	22 238	27 813	34 277	33 777	38 313	38 349	49 323	44 238
Other items.....	217	°	-	-	2	13	°	-
Total.....	25 147	31 603	37 063	36 958	41 286	41 379	51 464	46 141

Note: Total can have minor differences caused by the rounding factors.

TABLE 20.1A

SUPPLEMENTARY PURCHASE SLIPS IN THE MAGDALEN ISLANDS, 1998 TO 2005

(Quantity in rounded metric tons, live weight)

SPECIES	1998	1999	2000	2001	2002	2003	2004	2005
Cod.....	52	2	2	16	16	11	9	7
Haddock.....	-	-	-	-	-	-	-	-
Redfish.....	-	-	-	-	-	-	-	-
Atlantic Halibut.....	2	1	1	1	6	2	2	2
American Plaice.....	-	1	1	1	3	°	2	2
Greysole.....	-	-	-	-	-	-	-	-
Winter Flounder.....	-	-	-	-	-	-	1	2
Unspecified Flounders.....	-	-	-	-	-	-	-	-
Greenland Halibut.....	-	-	-	-	-	-	-	-
White Hake.....	-	-	-	-	-	-	-	-
Catfish.....	-	-	-	-	-	-	-	-
Other groundfish.....	-	-	-	-	2	3	4	1
Total groundfish.....	54	5	5	18	27	16	19	14
Herring.....	612	93	93	136	454	363	222	45
Mackerel.....	283	236	236	295	306	181	308	163
Bluefin Tuna.....	-	-	-	-	-	-	-	-
Eels.....	-	-	-	-	-	-	-	-
Salmon.....	-	-	-	-	-	-	-	-
Smelts.....	13	-	-	-	-	-	-	-
Capelin.....	-	-	-	-	-	-	-	-
Other pelagic and estuarian species.....	-	-	-	-	-	-	-	-
Total pelagic and estuarian species.....	908	329	329	431	760	544	530	209
Soft Shell Clams.....	4	16	16	35	36	50	59	59
Quahaugs Clams.....	59	227	227	272	163	-	-	-
Mussels.....	24	35	35	23	11	11	11	7
Sea Scallops.....	-	°	°	-	32	2	28	32
Whelks.....	-	-	-	1	7	18	2	1
Lobsters.....	22	77	77	93	136	272	295	213
Shrimp.....	-	-	-	-	-	-	-	-
Snow Crabs.....	-	-	-	-	-	2	9	9
Other molluscs and crustaceans.....	1	3	3	2	1	149	142	128
Total mollusc and crustacean.....	111	358	358	427	387	504	547	449
Other items.....	-	-	-	-	-	°	-	-
Total.....	1 073	692	692	875	1 173	1 064	1 096	672

Note: Total can have minor differences caused by the rounding factors.

TABLE 20.1B

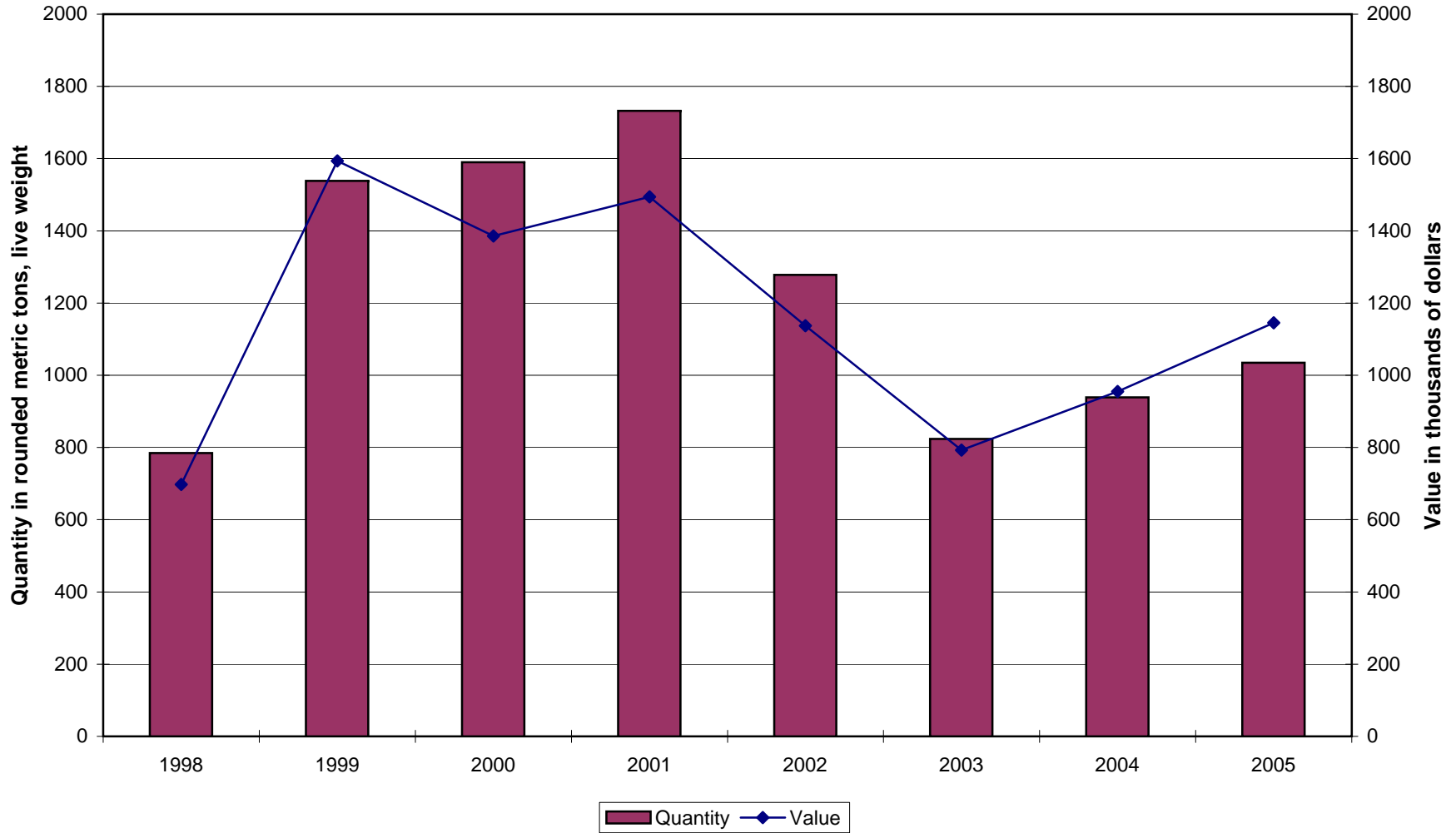
SUPPLEMENTARY PURCHASE SLIPS IN THE MAGDALEN ISLANDS, 1998 TO 2005

(Value in thousands of dollars)

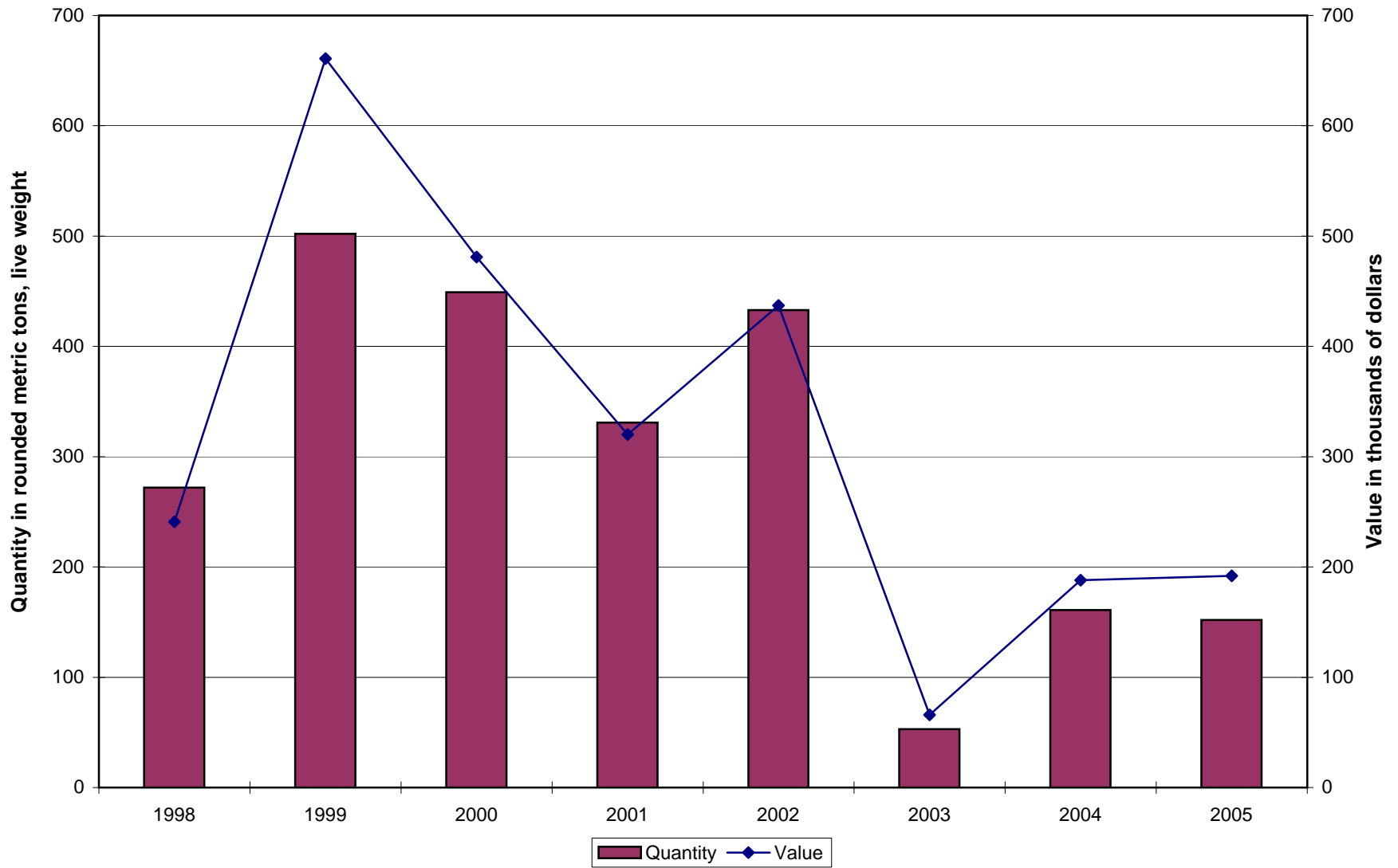
SPECIES	1998	1999	2000	2001	2002	2003	2004	2005
Cod.....	46	3	3	17	13	42	10	10
Haddock.....	-	-	-	-	-	-	-	-
Redfish.....	-	-	-	-	-	-	-	-
Atlantic Halibut.....	13	8	8	6	22	10	13	13
American Plaice.....	-	1	1	1	2	1	2	2
Greysole.....	-	-	-	-	-	-	-	-
Winter Flounder.....	-	-	-	-	-	-	1	2
Unspecified Flounders.....	-	-	-	-	-	-	-	-
Greenland Halibut.....	-	-	-	-	-	-	-	-
White Hake.....	-	-	-	-	-	-	-	-
Catfish.....	-	-	-	-	-	-	-	-
Other groundfish.....	-	-	-	-	1	2	2	1
Total groundfish.....	59	12	11	24	38	54	27	28
Herring.....	105	17	18	21	120	80	59	14
Mackerel.....	155	85	114	130	122	80	136	90
Bluefin Tuna.....	-	-	-	-	-	-	-	-
Eels.....	-	-	-	-	-	-	-	-
Salmon.....	-	-	-	-	-	-	-	-
Smelts.....	10	-	-	-	-	-	-	-
Capelin.....	-	-	-	-	-	-	-	-
Other pelagic and estuarian species.....	-	-	-	-	-	-	-	-
Total pelagic and estuarian species.....	271	103	133	151	242	160	195	104
Soft Shell Clams.....	5	26	26	61	78	110	195	195
Quahaugs Clams.....	73	401	401	480	288	-	-	-
Mussels.....	50	58	58	38	19	25	25	15
Sea Scallops.....	-	°	°	°	20	4	52	68
Whelks.....	-	-	-	1	6	20	2	1
Lobsters.....	209	862	923	1 193	1 857	3 000	3 250	2 820
Shrimp.....	-	-	-	-	-	-	-	-
Snow Crabs.....	-	-	-	-	-	15	60	40
Other molluscs and crustaceans.....	1	2	2	2	1	132	110	127
Total mollusc and crustacean.....	336	1 348	1 410	1 776	2 268	3 306	3 694	3 266
Other items.....	-	-	-	-	-	°	-	-
Total.....	666	1 462	1 554	1 951	2 548	3 521	3 916	3 397

Note: Total can have minor differences caused by the rounding factors.

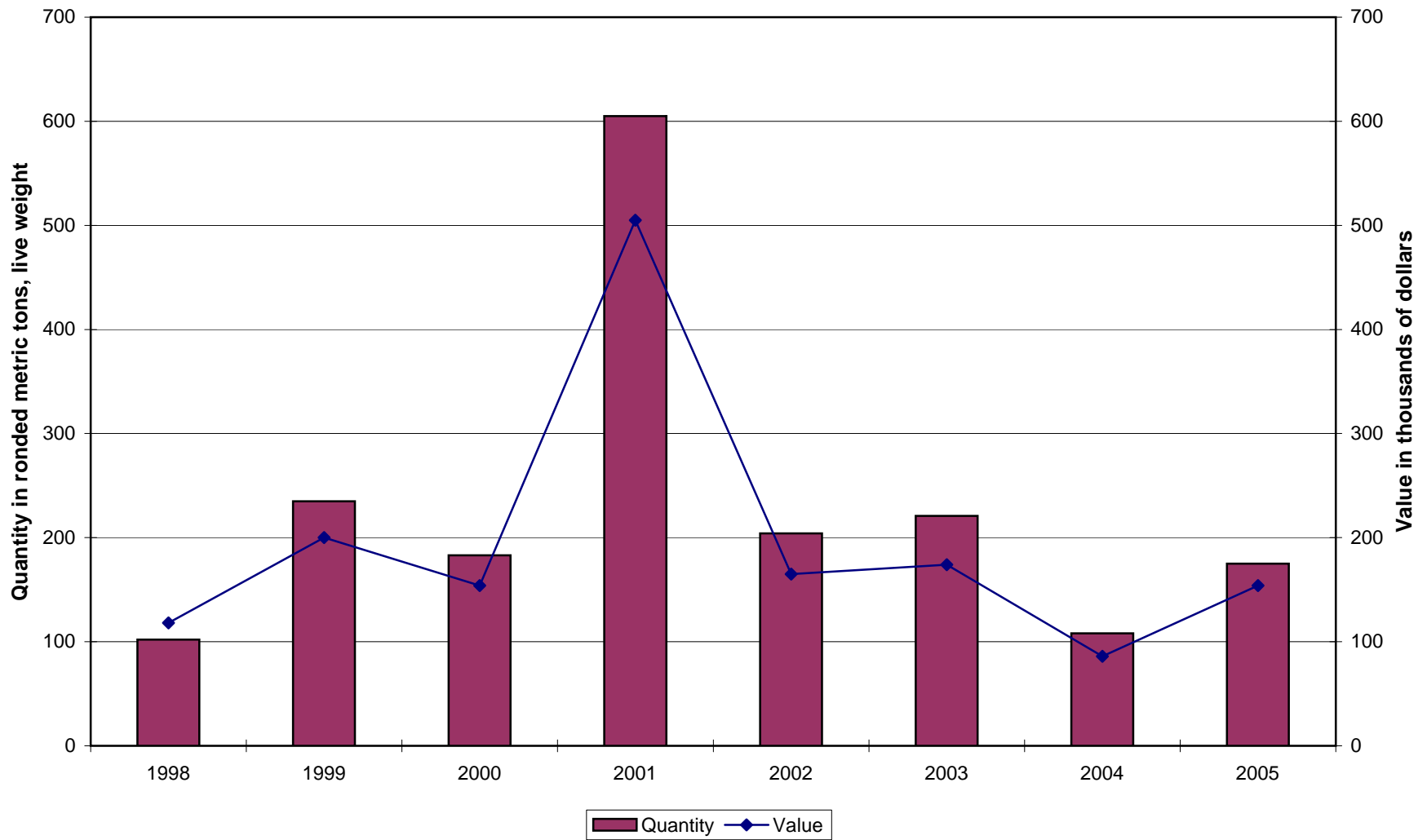
Quantity and value of groundfish landings from 1998 to 2005 for the Magdalen Islands



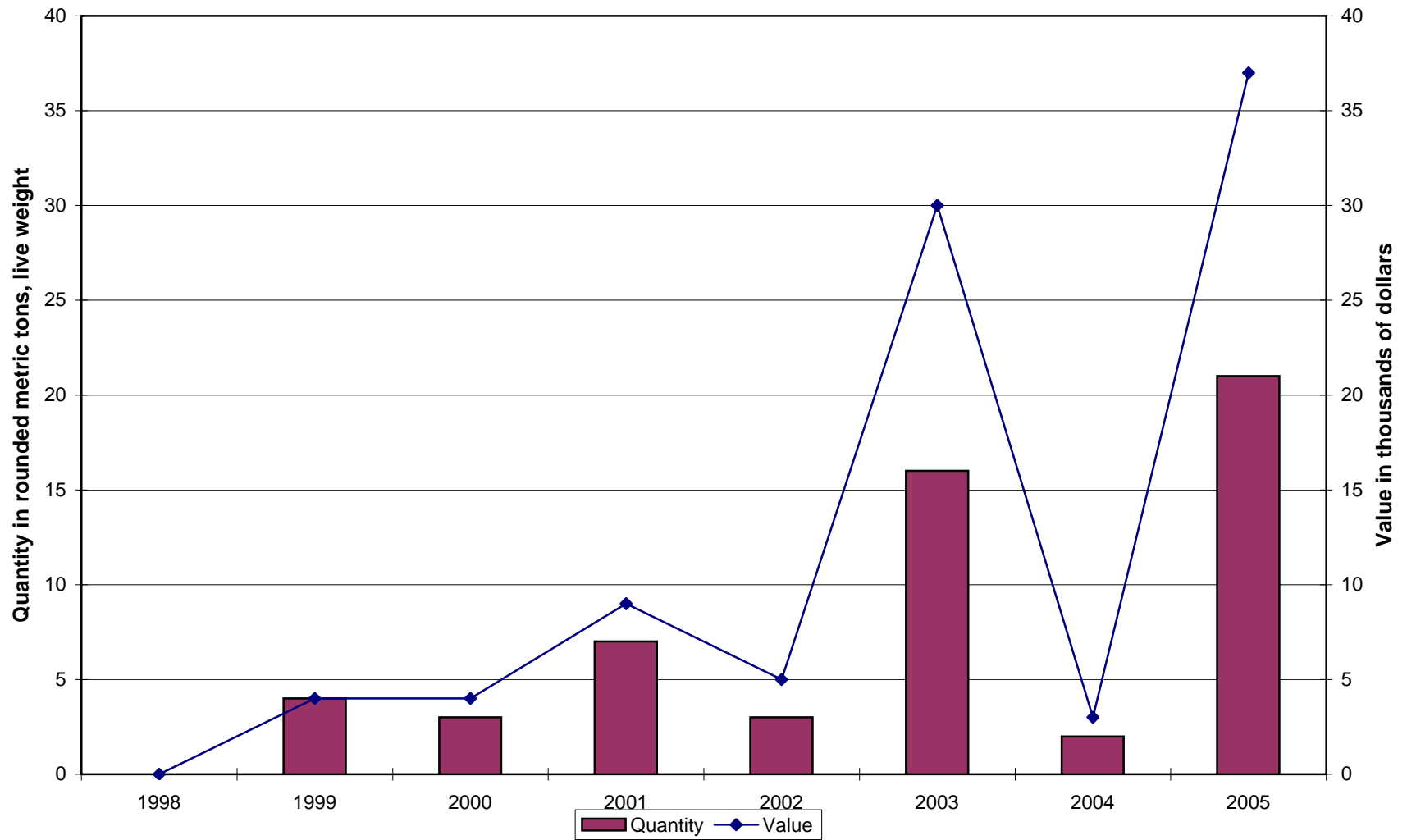
Quantity and value of cod landings from 1998 to 2005 for the Magdalen Islands



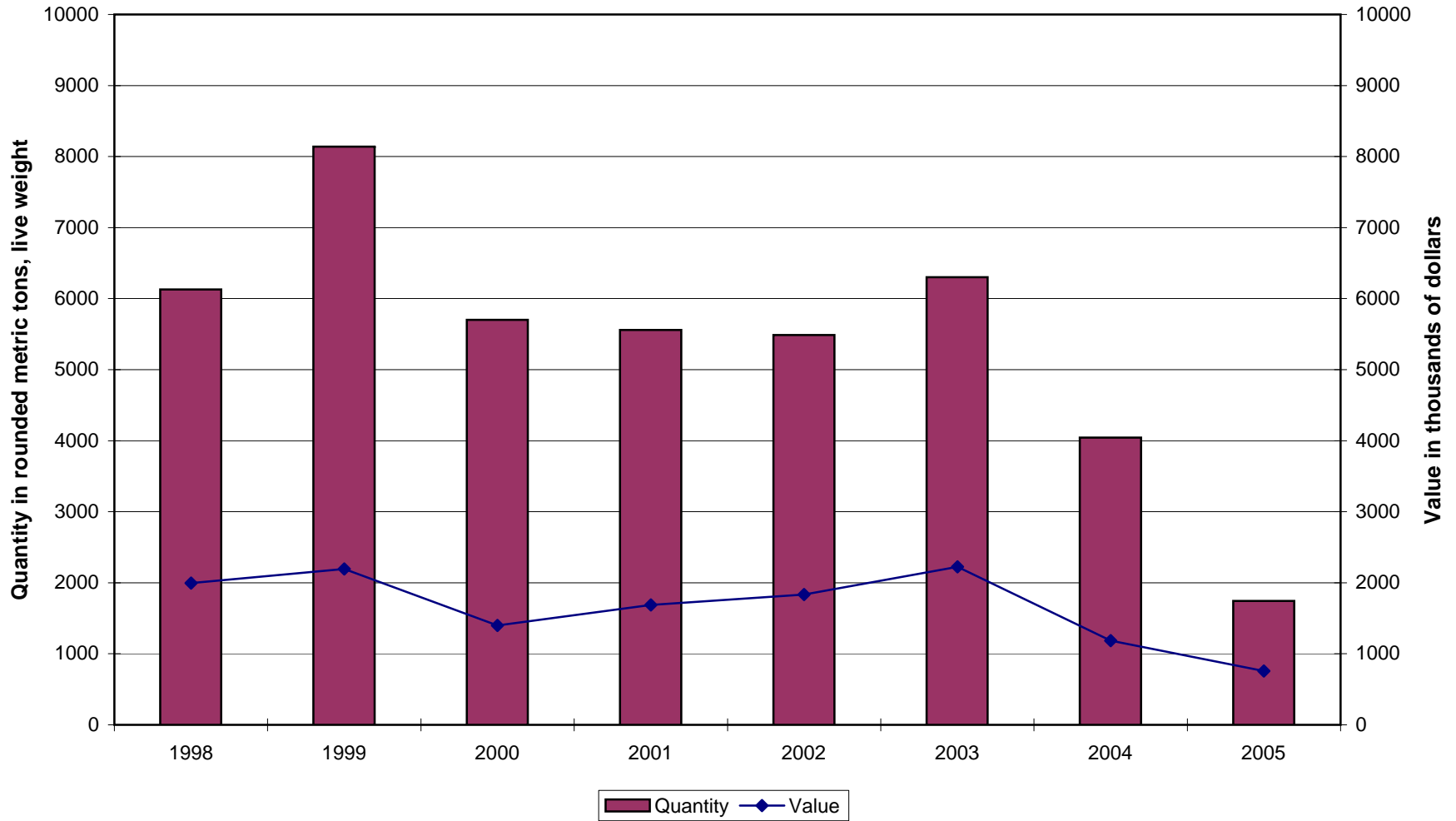
Quantity and value of redfish landings from 1998 to 2005 for the Magdalen Islands



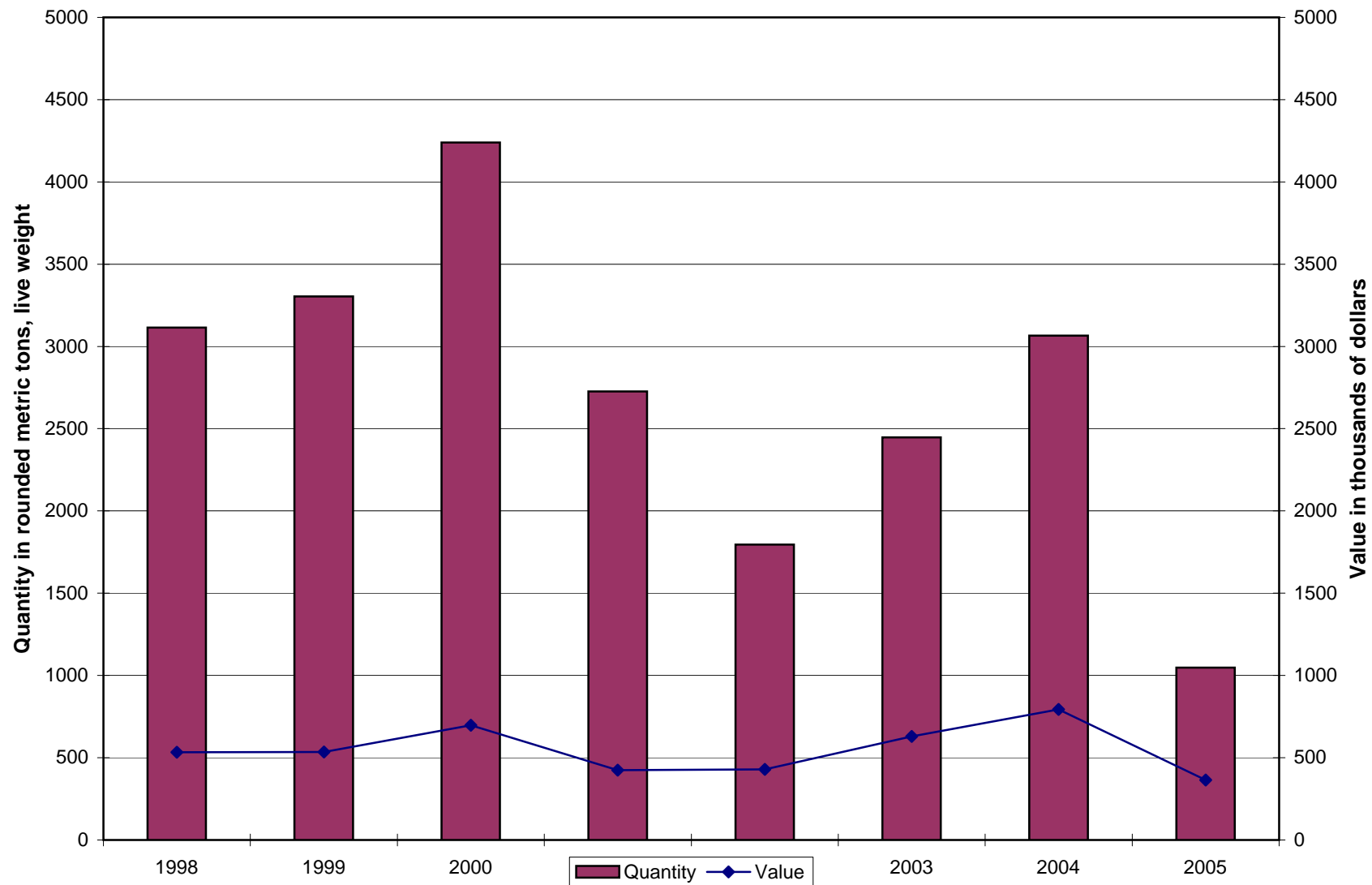
Quantity and value of Greenland halibut landings from 1998 to 2005 for the Magdalen Islands



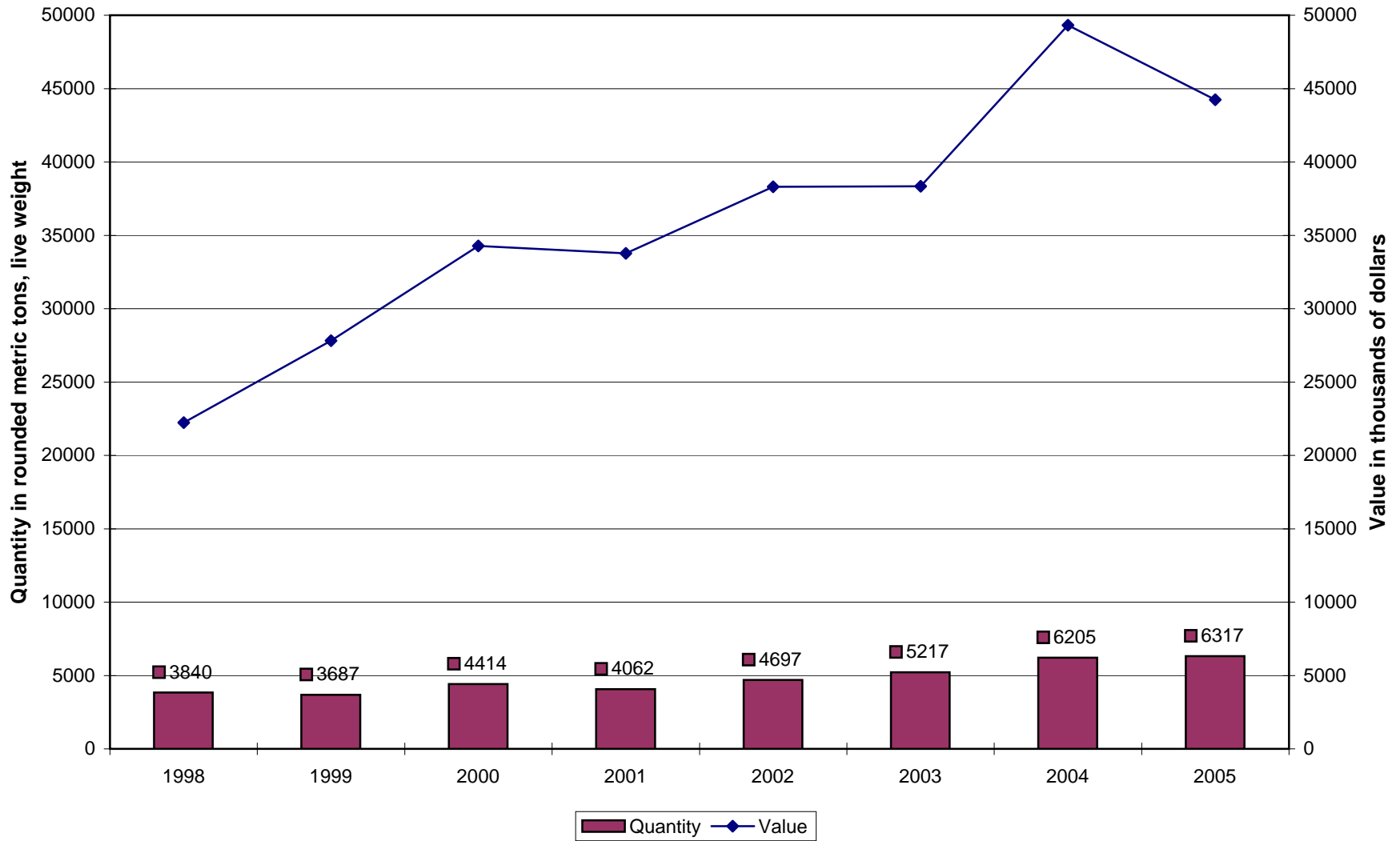
Quantity and value of pelagic species landings from 1998 to 2005 for the Magdalen Islands



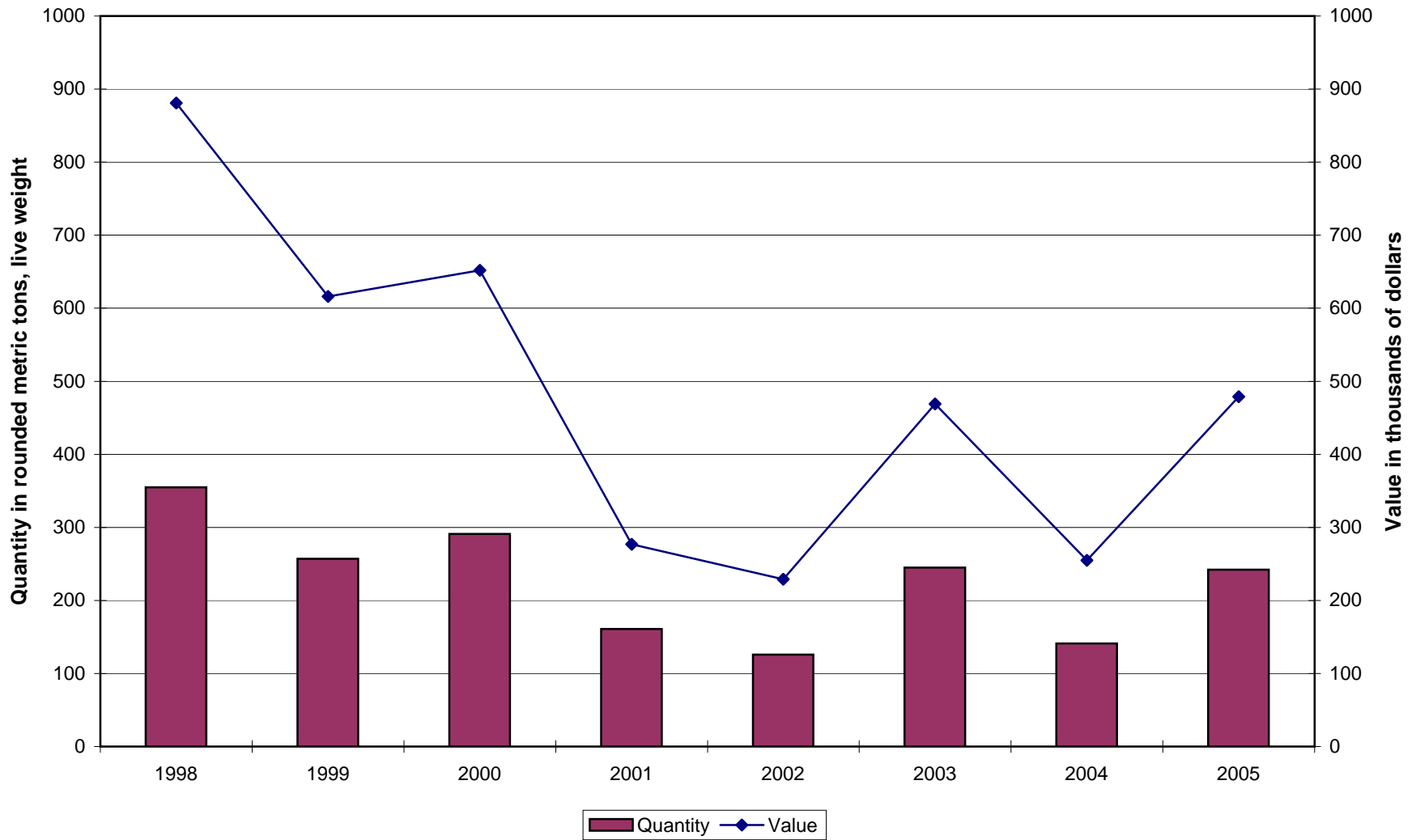
Quantity and value of herring landings from 1998 to 2005 for the Magdalen Islands



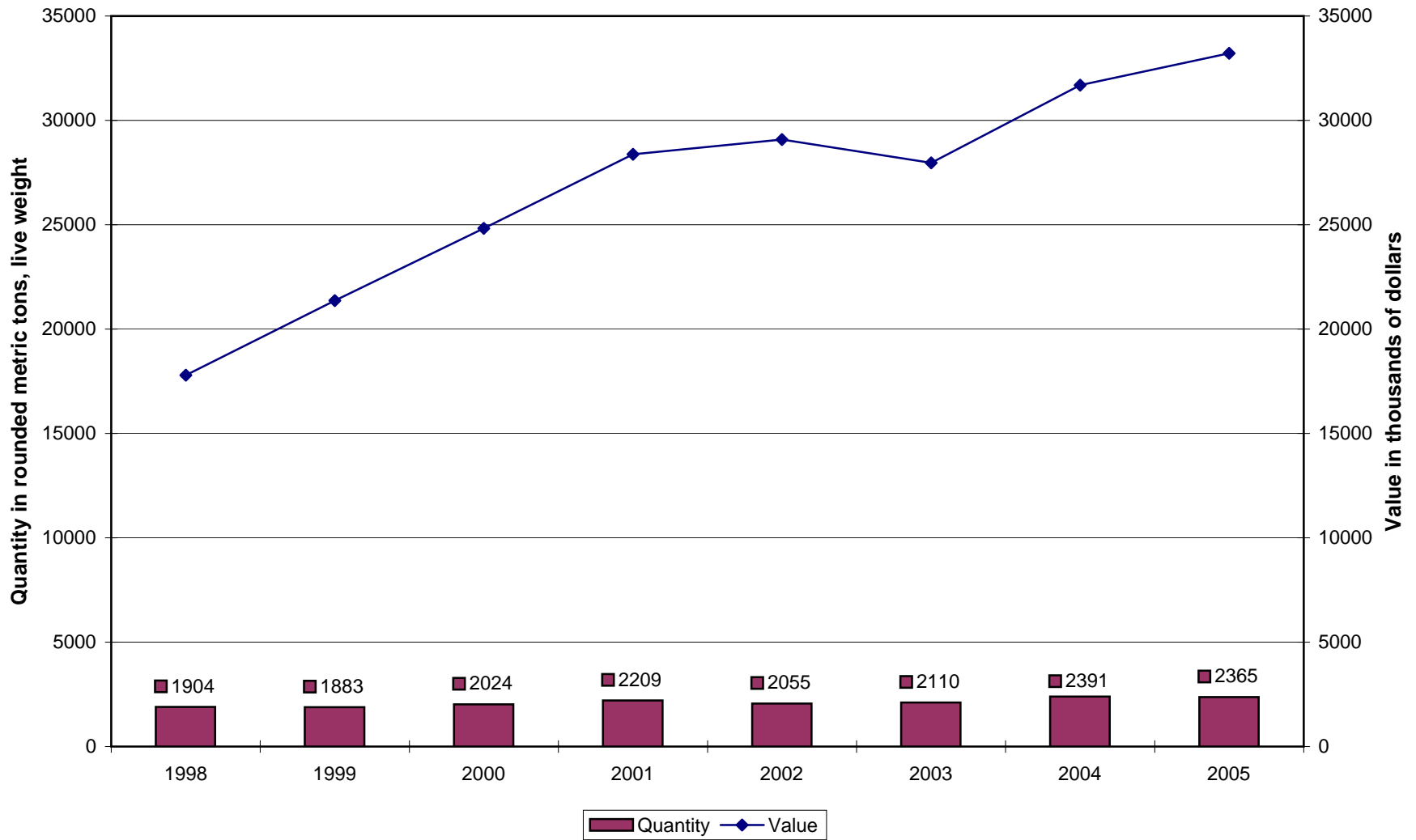
Quantity and value of molluscs and crustaceans landings from 1998 to 2005 for the Magdalen Islands



Quantity and value of sea scallops landings from 1998 to 2005 for the Magdalen Islands



Quantity and value of lobster landings from 1998 to 2005 for the Magdalen Islands



Quantity and value of snow crab landings from 1998 to 2005 for the Magdalen Islands

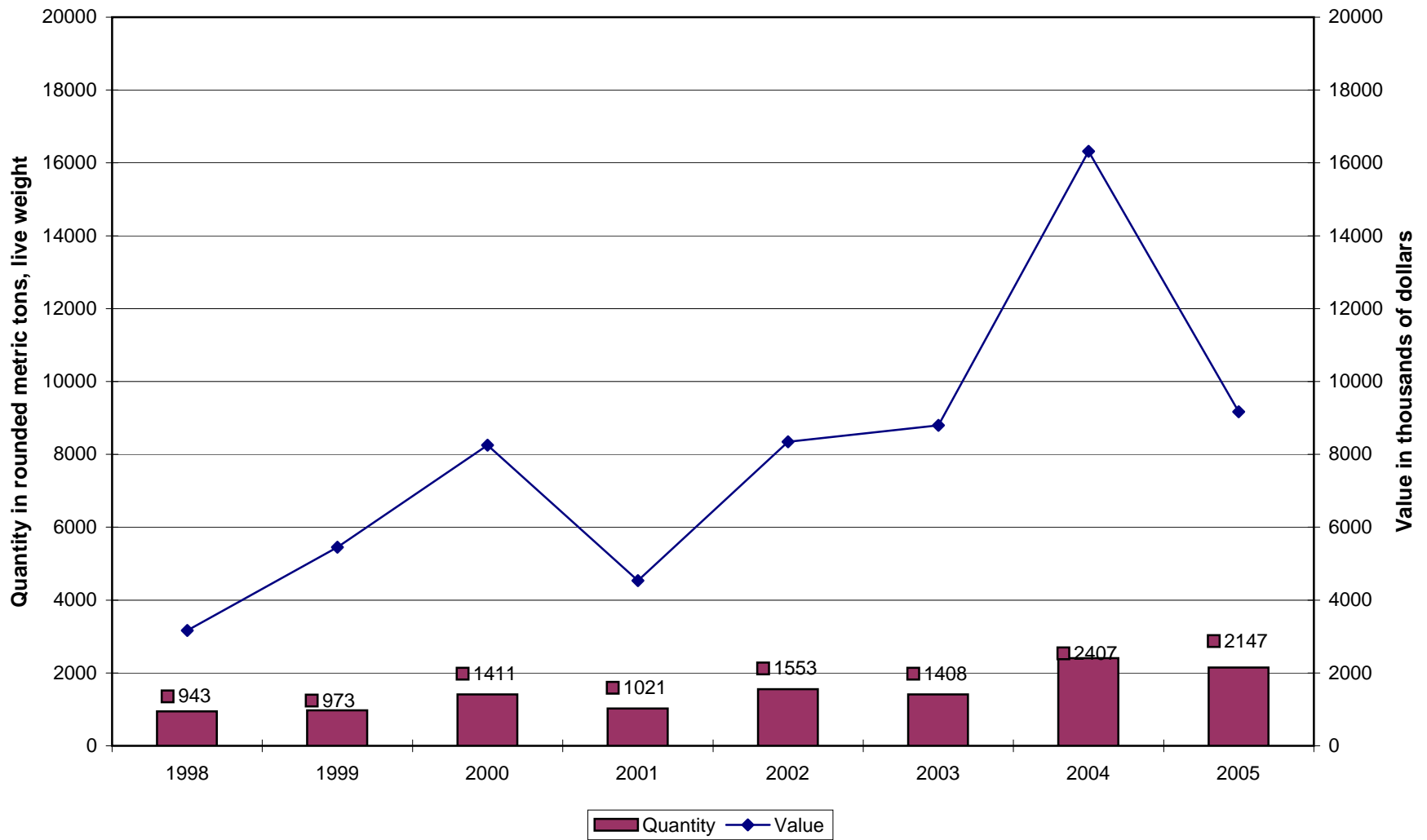


TABLE 21

**LANDINGS AVERAGE PRICE BY SPECIES IN THE MAGDALEN ISLANDS
1998 TO 2005**

(Excluding supplementary purchase slips, value in dollars per kilogram)

SPECIES	LANDED FORM DESCRIPTION	1998	1999	2000	2001	2002	2003	2004	2005
GROUND FISH									
Cod	Round.....	.862	-	.451	1.102	.676	-	-	-
	Gutted, head on.....	1.097	1.600	1.324	1.171	1.226	1.485	1.379	1.510
Redfish	Round.....	1.169	.854	.843	.833	.807	.784	.783	.902
	Gutted, head on.....	-	-	-	1.102	-	-	-	-
Atlantic Halibut	Round.....	5.129	-	1.772	5.512	-	-	-	-
	Gutted, head on.....	6.206	6.374	6.411	6.193	6.633	6.495	6.698	6.800
American Plaice	Round.....	.859	.929	.911	.931	.813	.684	.837	.765
Greyscale	Round.....	1.072	1.264	1.106	1.208	1.209	1.263	1.140	1.026
Winter Flounder	Round.....	.648	.735	.704	.660	.605	.728	.686	.894
Greenland Halibut	Round.....	.993	1.023	1.571	1.142	.994	.828	1.472	-
	Gutted, head on.....	-	1.102	-	1.919	-	-	-	1.948
	Beld, partly gutted.....	-	-	-	-	2.442	1.951	-	-
Unspecified Flounders	Round.....	.653	-	-	-	-	-	-	-
White Hake	Gutted, head on.....	.331	.268	1.072	.226	-	.989	.976	.811
PELAGIC AND ESTUARIAN SPECIES									
Herring	Round.....	.172	.156	.165	.155	.244	.257	.260	.348
Mackerel	Round.....	.549	.344	.468	.442	.379	.412	.396	.565
	Gutted, head off.....	.503	-	-	-	-	-	-	-
MOLLUSCS AND CRUSTACEANS									
Sea Scallops	In shell.....	2.522	-	-	-	-	-	-	-
	Meat and roe.....	16.537	16.535	-	-	-	-	-	-
	Meat.....	20.523	19.842	18.600	14.267	15.122	15.909	15.038	16.456
Whelk	In shell.....	-	-	-	-	.661	.891	.911	1.011
Lobsters	Round.....	9.348	11.346	12.264	12.848	14.154	13.255	13.251	14.045
Rock crab	Round.....	.649	-	-	.881	.656	.704	.790	.763
Snow crab	Round.....	3.360	5.609	5.846	4.437	5.374	6.248	6.780	4.271