

FECN15 CWIS 021800

THIRTY DAY ICE FORECAST FOR HUDSON AND FOXE FOR NOVEMBER  
ISSUED BY THE NORTH AMERICAN ICE SERVICE ON 02 NOVEMBER 2007.  
THE NEXT 30 DAY FORECAST WILL BE ISSUED ON 15 NOVEMBER 2007.

Mean air temperatures were near normal values over most locations during the last two weeks of October except above normal values over southern Hudson Bay. Freeze-up will be about 1 week later than normal.

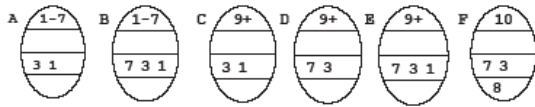
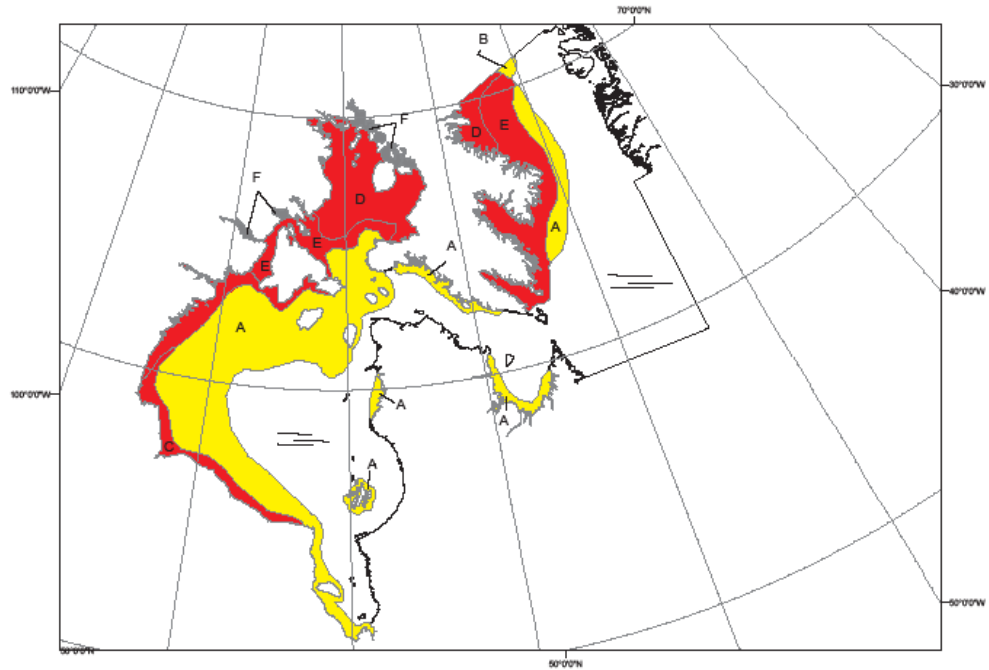
Forecast ice conditions for November 02<sup>nd</sup> to November 15<sup>th</sup>.

A series of storms will be moving across the area from Hudson Bay to Labrador Coast during the first two weeks of November. Temperatures will be near normal values over most locations except above normal along the Labrador Coast. New with some grey ice will form along the northwestern shore of Hudson Strait during the first week of November. The ice which formed along the shore of Southampton Island and the western shore of Hudson Bay will continue to expand during the first two weeks of November. At mid-November, grey and new ice will extend to about 30 miles of the shore along Southampton Island, to about 20 miles of the western shore of Hudson Bay, in western Foxe Channel and in inner Frobisher Bay. New with some grey ice will form along the northern shore of Hudson Strait. Mostly open water will prevail over the rest of Hudson Bay, while bergy water will dominate over the rest of Hudson Strait, southern Davis Strait and the Labrador Coast.

Forecast ice conditions for November 16<sup>th</sup> to November 30<sup>th</sup>.

A slow moving storm over eastern Hudson Bay will maintain moderate to strong easterly winds over most areas during the last two weeks of November except northerly winds over Hudson Bay. Temperatures will be near to slightly below normal values over most locations. The ice will expand at a moderate pace over Hudson Bay and in southern Davis Strait during the period but will be forming at a slower pace over the rest of the area. During the second half of November, the ice will expand southward to cover the northern third portion and the western shore of Hudson Bay and the extreme western portion of Hudson Strait. During that period, the ice will develop within 60 miles of the coast over southern Davis Strait. A mixture of greywhite and grey ice will be present over these areas at that time. At the end of November, an area of new with some grey ice will be present along the shores of Hudson Strait and Ungava Bay. Mostly open water will prevail over the rest of Hudson Bay, while bergy water will dominate over the rest of Hudson Strait and along the Labrador Coast.

Figure 1: Ice forecast - 01 December 2007



NORTH AMERICAN ICE SERVICE /  
 SERVICE NORD-AMERICAIN DES GLACES  
 ICE FORECAST - 30 DAY  
 PREVISIONS DES GLACES - 30 JOURS  
 VALID/VALIDE: 01 DEC 2007