

FECN16 CWIS 021800

THIRTY DAY ICE FORECAST FOR THE EASTERN AND NORTHERN ARCTIC FOR NOVEMBER ISSUED BY THE NORTH AMERICAN ICE SERVICE ON 02 NOVEMBER 2007.

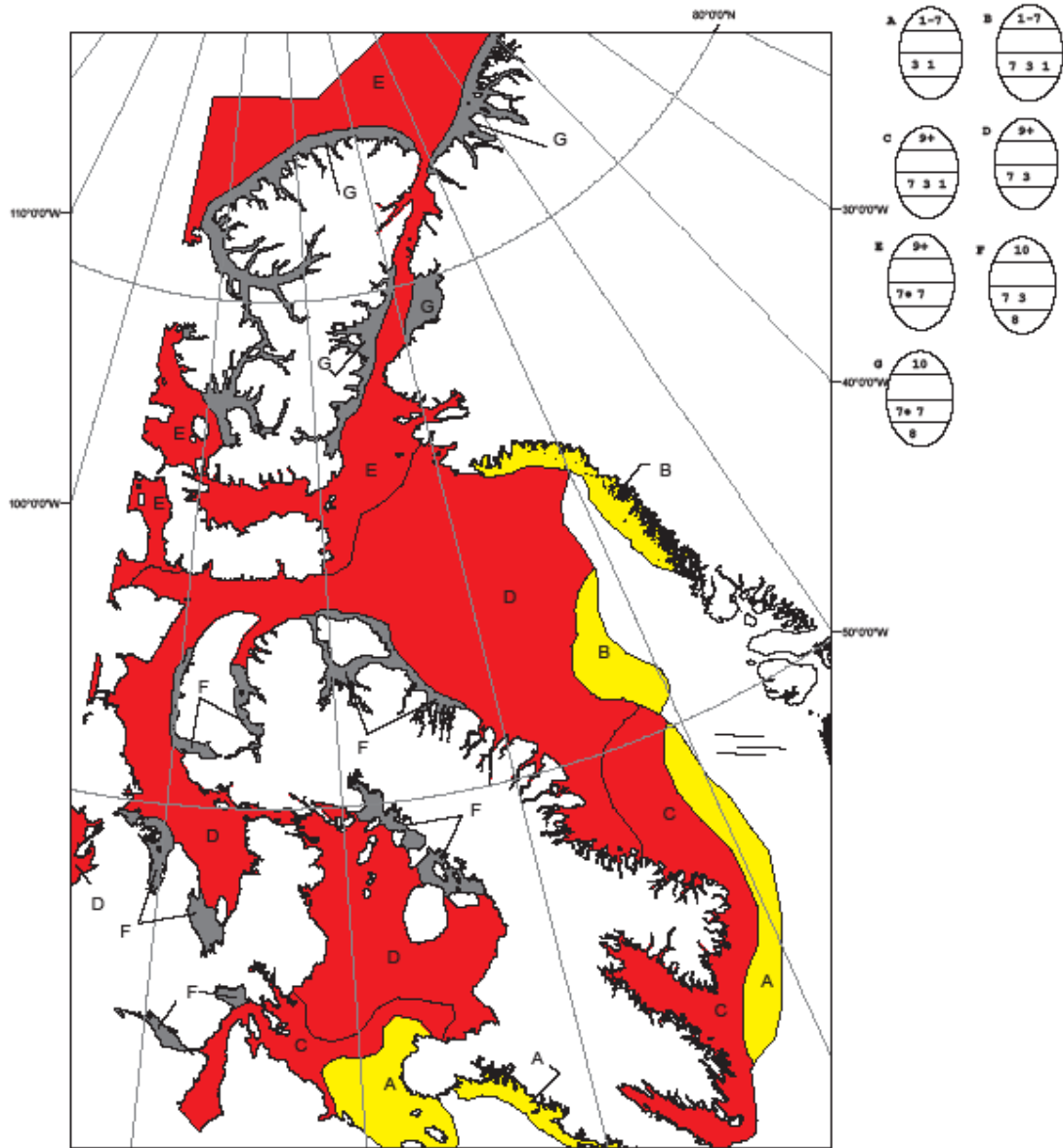
THIS IS THE LAST 30 DAY FORECAST FOR THE SEASON.

Mean air temperatures were above normal values over most of the Eastern Arctic during the last two weeks of October except near normal over southern Baffin Bay and Davis Strait.

Forecast ice conditions for November 01st to November 30th.

Temperatures will be near to slightly below normal values during the month of November. The ice over Baffin Bay and Davis Strait will develop at a moderate pace during the period. The ice in Baffin Bay will continue to expand southeastward during the first two weeks of November. The eastern edge of the ice pack will lie near 60W north of Cape Dyer and near 73N along the Greenland Coast at mid-November. At that time, a mixture of grey-white and grey ice will prevail west of the ice edge with an area of first-year ice west of 70W. Areas of new with some grey ice will form in shallow bays and inlets south of Cape Dyer during the first week of November. At mid-November, an area of grey and new ice will prevail along the coast from Cape Dyer to Cumberland Sound and in inner Frobisher Bay. For the second half of November, most of Baffin Bay will be covered with first-year and grey-white ice west of 58W north of Cape Dyer. In addition, the ice will develop within 60 miles of the coast south of Cape Dyer and be composed of grey-white and grey ice during the second half of November. The southern extent of the ice pack will lie north of Hudson Strait at the end of November.

Figure 1: Ice forecast - 01 December 2007



NORTH AMERICAN ICE SERVICE /
 SERVICE NORD-AMERICAIN DES GLACES
 ICE FORECAST - 30 DAY
 PREVISIONS DES GLACES - 30 JOURS
 VALID/VALIDE: 01 DEC 2007