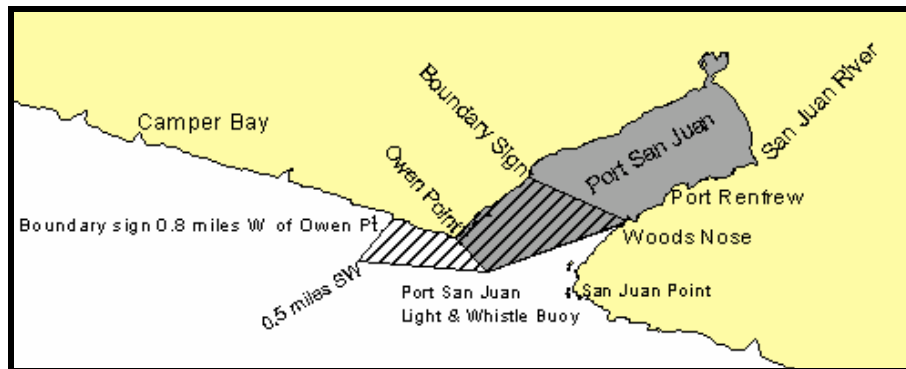
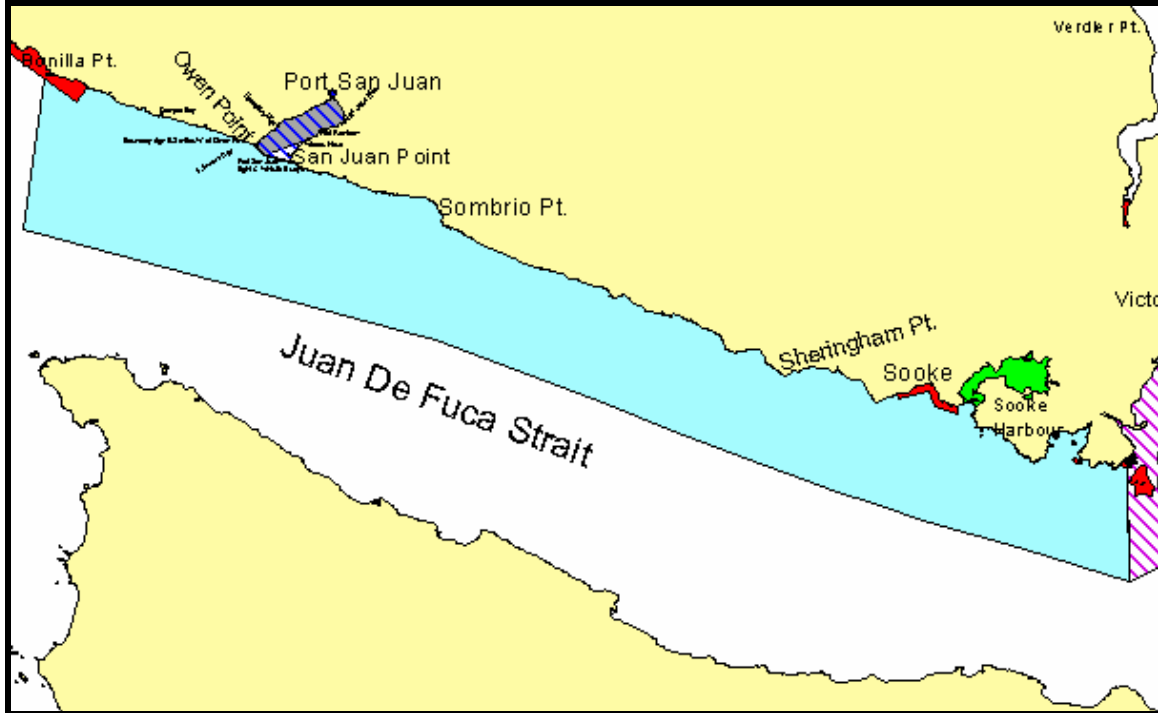




# FISHERY NOTICE

## AREA 20 SAN JUAN AND JUAN DE FUCA

### 2007 OPENINGS AND CLOSURES



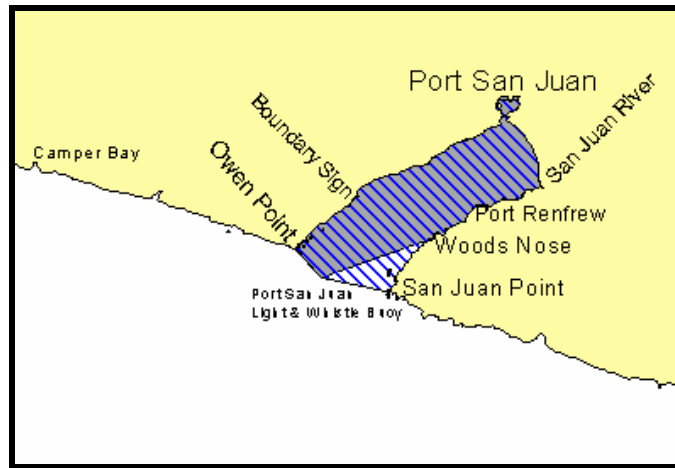
### PORT SAN JUAN

Effective: August 15 to September 3

	Jan 1 - Dec 31	Rockfish Conservation Closure - No Fishing
	Aug 15 - Sept 3	Angling Closure
	Jul 15 - Oct 25	Chinook Non-retention
	Aug 1 - Oct 15	Chinook Non-retention
	Sept 4 - Dec 31	Four (4) Coho per day, only two (2) may be unmarked.
	Oct 1 - Dec 31	Four (4) Coho per day, only one (1) may be unmarked.



## FISHERY NOTICE AREA 20 SAN JUAN AND JUAN DE FUCA 2007 OPENINGS AND CLOSURES



### PORT SAN JUAN Effective: September 4 to December 31

	Jan 1 - Dec 31	Rockfish Conservation Closure - No Fishing
	Aug 15 - Sept 3	Angling Closure
	Jul 15 - Oct 25	Chinook Non-retention
	Aug 1 - Oct 15	Chinook Non-retention
	Sept 4 - Dec 31	Four (4) Coho per day, only two (2) may be unmarked.
	Oct 1 - Dec 31	Four (4) Coho per day, only one (1) may be unmarked.

#### NOTES

The combined aggregate daily limit for Pacific Salmon is four (4) per day.

The possession limit is twice the daily limit.

When fishing for salmon, Fishers are required to use barbless hooks.

**Sockeye Closed**, opportunities to be announced.

#### DEFINITIONS

“**Hatchery marked or marked**” means a fish that has a healed scar in place of the adipose, pelvic, or pectoral fin, or in place of a maxillary.

#### CHINOOK

January 1 to December 31	<b>The daily limit is two (2) chinook with a minimum size limit of 45 cm.</b>
July 15 to October 25	<b>There is non retention of chinook in the following waters:</b> Those waters of Subareas 20-2 and a portion of 20-1, inside or northerly of a line from Owen Point to the Port San Juan Light and Whistle Buoy then to Woods Nose.
August 1 to October 15	<b>There is non retention of chinook in the following waters:</b> In Subareas 20-6 and 20-7 (Sooke Inlet, Sooke Harbour and Sooke Basin, northerly of a line from Muir Point to Possession Point).



## FISHERY NOTICE AREA 20 SAN JUAN AND JUAN DE FUCA 2007 OPENINGS AND CLOSURES

### COHO

June 1 to December 31	<b>The daily limit is two (2) coho per day, both of which must be "hatchery marked".</b>
September 4 to December 31	<b>The daily limit is four (4) coho, only two (2) of which may be unmarked:</b> In those waters in Subarea 20-2 and a portion of Subarea 20-1 shoreward of a line between a square white boundary sign at Owen Point, the Port San Juan Light and Whistle Buoy, and San Juan Point.
October 1 to December 31	<b>The daily limit is four (4) coho, only one (1) of which may be unmarked:</b> In those waters in a portion of Subareas 20-1 (seaward of a line between a square white boundary sign at Owen Point, the Port San Juan Light and Whistle Buoy, and San Juan Point) and 20-3 to 20-7.

### FINFISH CLOSURES

August 15 to September 3	<b>The following waters will be closed to fishing for all finfish:</b> In Area 20, those waters that are inside a line that begins at a white square boundary sign located approximately 0.8 nautical miles west of Owen Point, then to 48°32.45' north latitude and 124°32.05' west longitude, then to the Port San Juan Light and Whistle Buoy, then to Woods Nose, then across Port San Juan to a white square boundary sign at 48°33.23' north latitude and 124°28.55' west longitude.
--------------------------	---

### ROCKFISH CONSERVATION AREAS

**Closed to fishing for all finfish:** Area 20 has five (5) Rockfish Conservation Areas. These areas are closed to all finfishing. For more information regarding Rockfish Conservation Areas in the Pacific Region go to the website:

**[www.pac.dfo-mpo.gc.ca/recfish/Restricted\\_Areas/RCA/default\\_e.htm](http://www.pac.dfo-mpo.gc.ca/recfish/Restricted_Areas/RCA/default_e.htm)**

**REGULATIONS CHANGE IN-SEASON!**

**[www.pac.dfo-mpo.gc.ca/recfish](http://www.pac.dfo-mpo.gc.ca/recfish)**

**1-866-431-FISH (3474)**

**1-250-363-3252 DFO Office**

**Report Fishing Violations 1-800-465-4336**