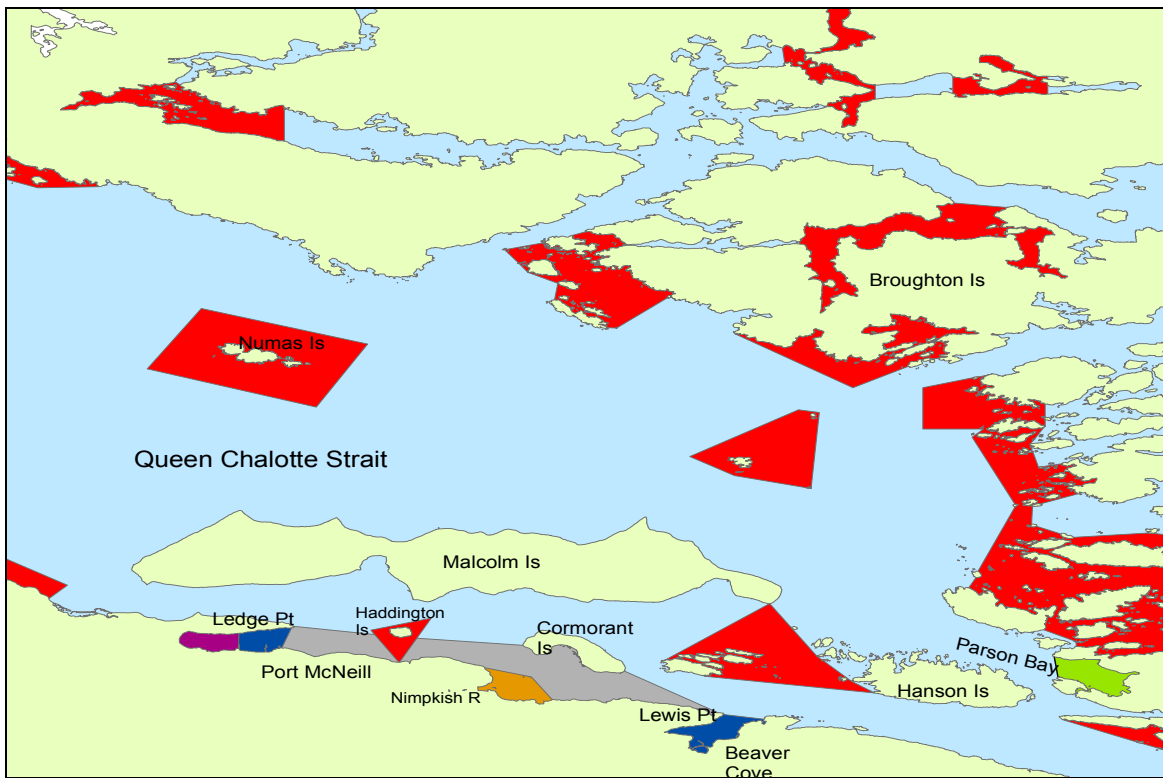
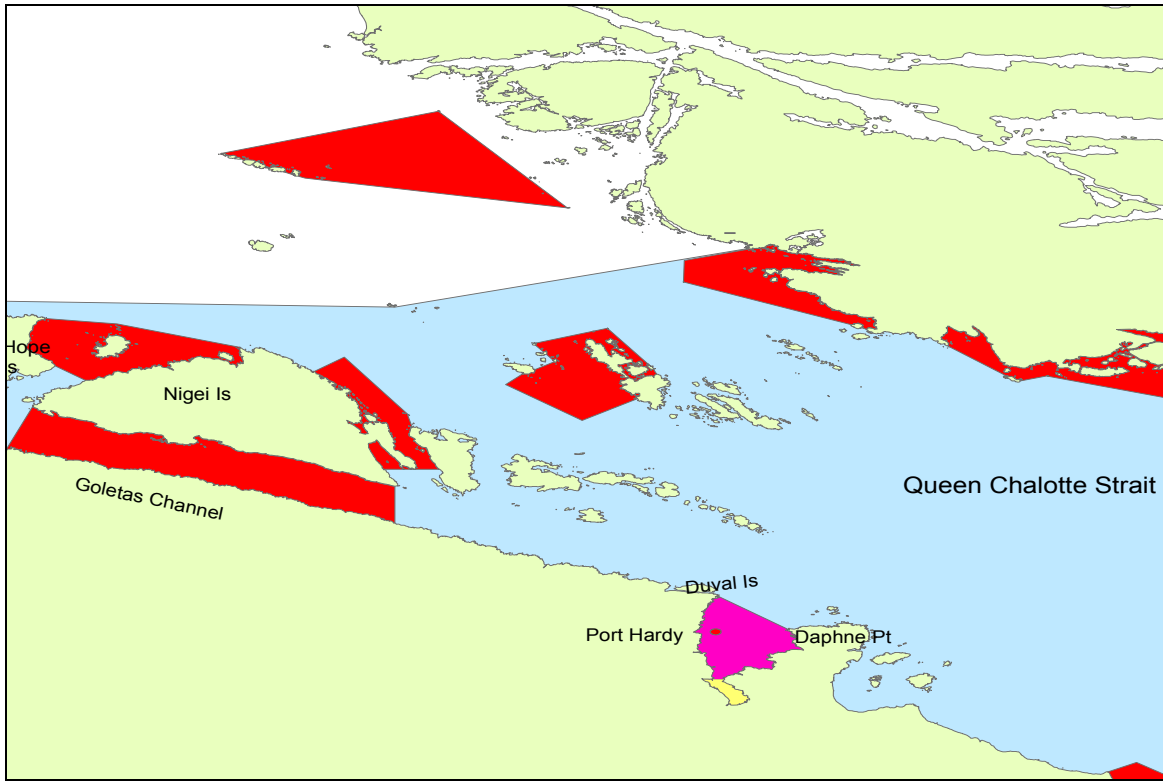




FISHERY NOTICE

AREA 12 JOHNSTONE STRAIT

2007 OPENINGS AND CLOSURES



Visit the DFO Pacific Region Recreational Fishing website at www.pac.dfo-mpo.gc.ca/recfish
General Fishing Information Line 1-866-431-3474 (1-866-431-FISH)
DFO Office 250-949-6422

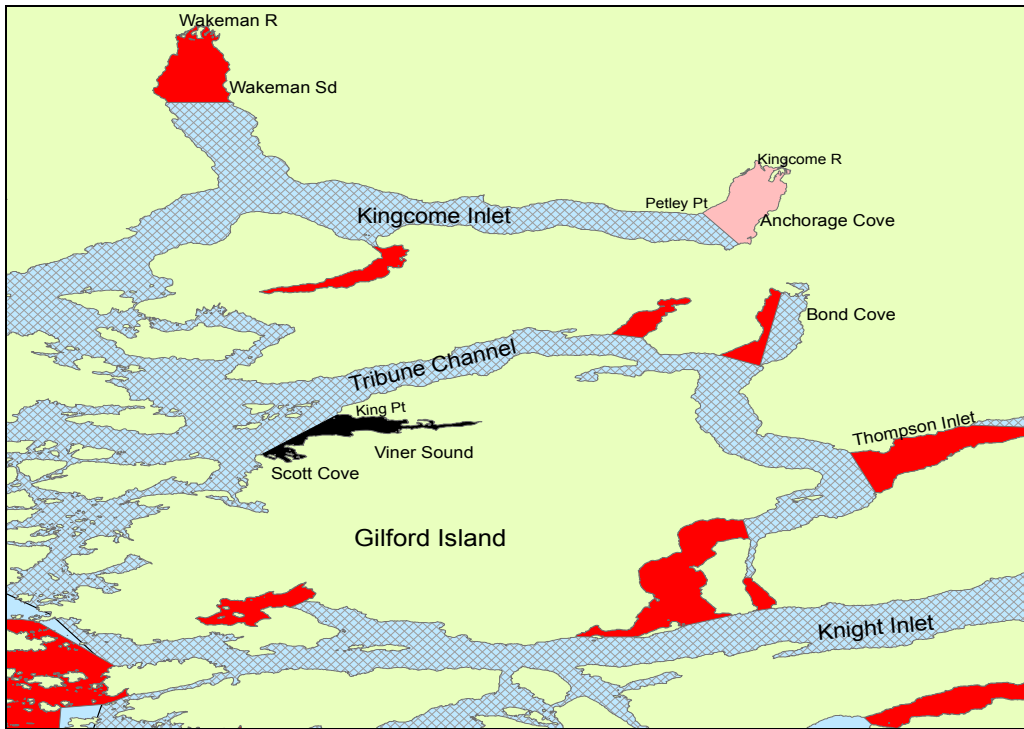


FISHERY NOTICE

AREA 12 JOHNSTONE STRAIT

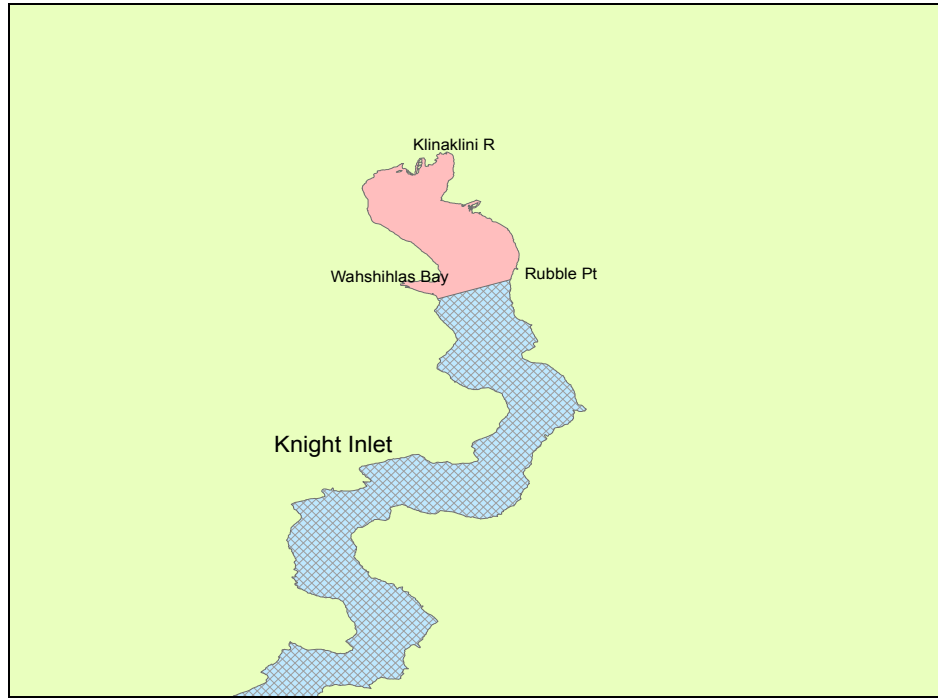
2007 OPENINGS AND CLOSURES



	Jan 1 - Dec 31	Rockfish Conservation Closure – Finfish Closure
	June 1 - Nov 30	Finfish Closure
	June 15 - Oct 13	Finfish Closure
	Aug 15 - Dec 31 Aug 1 – Oct 31	- Finfish Closure - Chinook Non-Retention
	Aug 15 - Sep 30	Hook Regulation (single pointed barbless)
	Aug 1 - Oct 31	Chinook Non-Retention
<u>SALMON DAILY LIMITS</u>		
	Jun 1 – July 31	Two (2) Coho per day, only one (1) may be unmarked
	Aug 1 - Dec 31	Two (2) Coho per day, only one (1) may be unmarked
	Aug 15 - Dec 31 Aug 1 - Oct 31	Two (2) Coho per day, only one (1) may be unmarked Chinook Non-Retention
	Aug 15 - Dec 31	Four (4) Hatchery marked Coho per day





FISHERY NOTICE AREA 12 JOHNSTONE STRAIT 2007 OPENINGS AND CLOSURES



	Jan 1 - Dec 31	Finfish Closure
	Aug 15 - Sept 30	Finfish Closure

NOTES

The combined aggregate daily limit for Pacific Salmon is four (4) per day.

The possession limit is twice the daily limit.

When fishing for salmon, Fishers are required to use barbless hooks.

Sockeye Closed, opportunities to be announced.

DEFINITIONS

“**Hatchery marked or marked**” means a fish that has a healed scar in place of the adipose, pelvic, or pectoral fin, or in place of a maxillary.



FISHERY NOTICE AREA 12 JOHNSTONE STRAIT 2007 OPENINGS AND CLOSURES

CHINOOK

January 1 to December 31	The minimum size limit of 62 cm.
August 1 to October 31	Non-retention of chinook salmon in the following waters: Subarea 12-19 (Broughton Strait southerly of a line from Ledge Point to the light on the southern end of Haddington Island, then to the light on Yellow Bluff on Cormorant Island, then following the southerly shoreline to a marker on Gordon Bluff, then to Lewis Point on Vancouver Island.

COHO

June 1 to December 31	Daily limit is two (2) coho per day, both of which must be hatchery marked. <i>Additional opportunities are listed below:</i>
August 1 to December 31	Daily limit is two (2) coho per day, only one (1) of which may be unmarked: Subareas 12-26 to 12-48.
August 15 to December 31	Daily limit is two (2) per day, one of which maybe wild (unmarked); that portion of Subarea 12-4 shoreward of a line running from Lewis Point to 50°32.839' north latitude and 126°50.122 west longitude near the southwest entrance to Telegraph Cove commonly known as Beaver Cove.
August 15 to December 31	Daily limit is four (4) hatchery marked fish per day: In Subarea 12-16, those waters of Hardy Bay inside a line from Daphne Point to Duval Point where salmon fishing is permitted.
August 15 to December 31	Daily limit is two (2) per day, one of which maybe wild (unmarked): That portion of Subarea 12-19, the waters of McNeill Bay inside a line from Ledge Point to the BC Ferry Terminal.

ALL SALMON

August 1 to October 15	You may only use a single-pointed hook that measures no more than 15 mm between the point and shank when fishing: In Subarea 12-16, the mouth of the Keogh River within a 400 m radius of the shore.
August 1 to September 30	You may only use a single-pointed hook that measures no more than 15 mm between the point and shank when fishing: In Subarea 12-17, those waters inside a line that starts at a boundary sign approx. 1.9 km northwest of the Cluxewe river mouth, then to 50°37.53' N and 127°12.21'W, then to 50°36.98'N and 127°09.53'W, then 200° true to a boundary sign on the shore.
August 15 to September 30	You may only use a single-pointed hook that measures no more than 15 mm between the point and shank when fishing: In Subarea 12-16, the waters of Hardy Bay shoreward of a line from a boundary sign on the Keltic Seafoods wharf to a boundary sign on the opposite shore. (inner portion of Hardy Bay).



FISHERY NOTICE AREA 12 JOHNSTONE STRAIT 2007 OPENINGS AND CLOSURES

FINFISH CLOSURES

<p>January 1 to December 31</p>	<p>Following waters will be closed to fishing for all finfish:</p> <p>-In Area 12, the waters of the mouth of Klinaklini River (Knight Inlet) shoreward of a line from a fishing boundary sign at the southern entrance to Wahshihlas Bay to a fishing boundary sign at Rubble Point.</p> <p>-In Area 12, the mouth of Kingcome River shoreward of a line from a fishing boundary sign on Petley Point to a fishing boundary sign on a point on the opposite shore of Kingcome Inlet.</p> <p>-In Area 12, the mouth of Wakeman River north of a line connecting two fishing boundary signs located on opposite shores approximately 6 km from the head of Wakeman Sound. This is an RCA.</p>
<p>June 1 to December 31</p>	<p>Following waters will be closed to fishing for all finfish: In Area 12, the mouth of Nimpkish River inside a line from a fishing boundary sign at a point on the shore of Vancouver Island approximately 1.5 km east of Broad Point, then to a navigational aid in the middle of Haddington Passage, then to a fishing boundary sign at a point approximately 1 km east of Willow Creek, then to the tidal water boundary signs approximately 100 m upstream of the Highway 19 bridge.</p>
<p>June 15 to October 13</p>	<p>Following waters will be closed to fishing for all finfish: Subarea 12-20 (those waters of Parson Bay bounded inside a line from Red Point on Harbledown Island to a marker on the most northwest point of Parson Island, from there following the northern shore to the most easterly point and from there true east to Harbledown Island).</p>
<p>August 15 to September 30</p>	<p>Following waters will be closed to fishing for all finfish: In Area 12, the mouth of Scott Cove Creek and Viner Sound shoreward of a line between fishing boundary signs located at King Point and on the point 1 km south from the mouth of Scott Cove Creek.</p>
<p>August 15 to December 31</p>	<p>Following waters will be closed to fishing for all finfish: In Area 12, the waters of Port McNeill Bay westerly of a line from a boundary sign at the north end of the Western Forest Products jetty, true north to a boundary sign on the opposite shore of Ledge Point Peninsula.</p>



**FISHERY NOTICE
AREA 12 JOHNSTONE STRAIT
2007 OPENINGS AND CLOSURES**

ROCKFISH CONSERVATION AREAS

Closed to fishing for all finfish: Area 12 has 31 Rock Fish Conservation areas (See the red shaded area of the above map). These areas are closed to all finfishing. For more information regarding Rock Fish Conservation in the Pacific Region go to the DFO Rock Fish website located at:

www.pac.dfo-mpo.gc.ca/recfish/Restricted_Areas/RCAs/default_e.htm

REGULATIONS CHANGE IN-SEASON!

www.pac.dfo-mpo.gc.ca/recfish

1-866-431-FISH (3474)

1-250-949-6422 DFO Office

Report Fishing Violations 1-800-465-4336