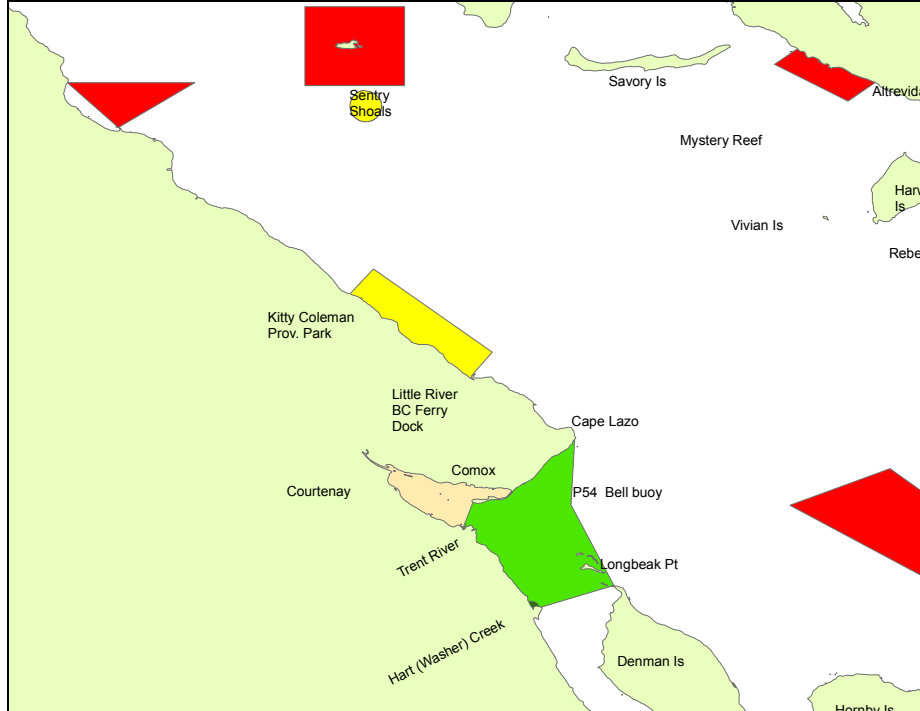









FISHERY NOTICE

AREA 14 COURTENAY, COMOX AND QUALICUM

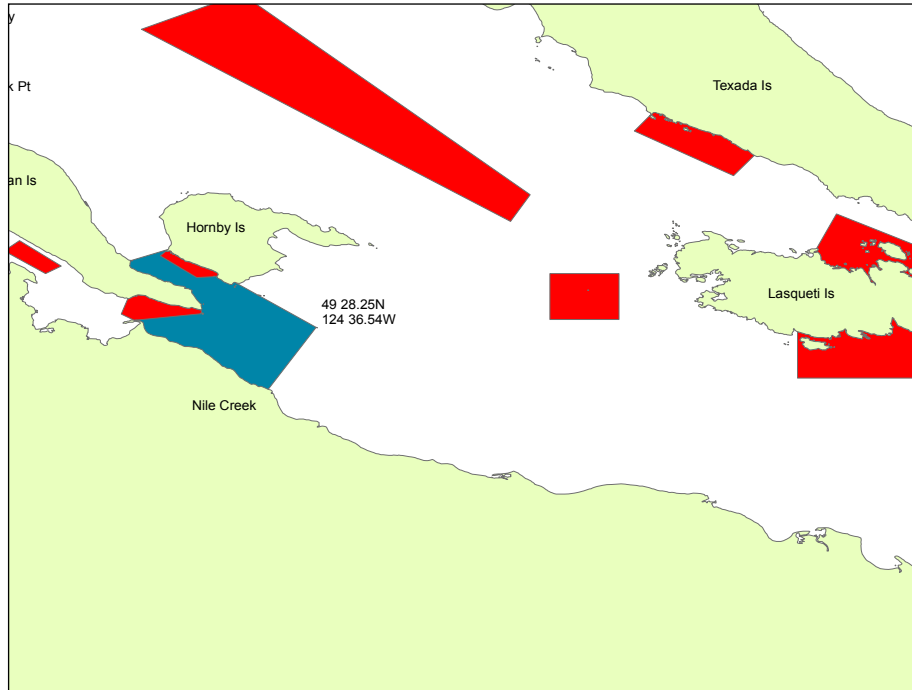
2007 OPENINGS AND CLOSURES



	Jan 1- Dec 31	Rockfish Conservation Closure- No Fishing
	May 1- Aug 31 Jan 1- Dec 31	Finfish Closure Chinook Non-Retention
	Jun 15- Aug 15	Chinook Non-Retention
	Jun 1- Jun 30	Chinook Non-Retention
	May 1- Aug 31 Sept 1 – Dec 31	Chinook Non-Retention Two (2) Coho only one (1) of which may be unmarked.



FISHERY NOTICE AREA 14 COURTENAY, COMOX AND QUALICUM 2007 OPENINGS AND CLOSURES



NOTES

The combined aggregate daily limit for Pacific Salmon is four (4) per day.

The possession limit is twice the daily limit.

When fishing for salmon, Anglers are required to use barbless hooks.

Sockeye Closed, opportunities to be announced.

DEFINITIONS

“**Hatchery marked or marked**” means a fish that has a healed scar in place of the adipose, pelvic, or pectoral fin, or in place of a maxillary.

CHINOOK

Effective January 1 to December 31 the daily limit is two (2) chinook with a minimum size limit of 62 cm.



FISHERY NOTICE AREA 14 COURTENAY, COMOX AND QUALICUM 2007 OPENINGS AND CLOSURES

COHO

Effective June 1 through December 31 the daily limit is two (2) coho per day, both of which must be hatchery marked.

Effective September 1 to December 31 the daily limit for coho salmon in Subarea 14-11 [Baynes Sound inside a line from the Cape Lazo Light, then to the P-54 Bell Buoy on Comox Bar, then to Longbeak Point, then to the mouth of Hart (Washer) Creek] will be two (2) per day, one (1) of which may be unmarked.

CHINOOK NON RETENTION AREAS

Effective January 1 to December 31 there is non-retention of chinook salmon in the following waters:

- Subarea 14-14. [Comox harbour].

Effective May 1 to August 31 there is non-retention of chinook salmon in the following waters:

- Subarea 14-11. [Baynes Sound inside a line from the Cape Lazo Light, then to the P-54 Bell Buoy on Comox Bar, then to Longbeak Point, then to the mouth of Hart (Washer) Creek].

Effective June 1 to June 30 there is non-retention of chinook salmon in the following waters:

- Those waters, inside a line from 49 46.74'N and 124 59.06'W near the boat launch at Kitty Coleman Provincial Park, thence north-easterly to 49 47.35'N and 124 57.68'W, thence southerly to 49 45.14'N and 124 54.32'W, thence southwest to the navigation light at the Little River Ferry Dock.
- Those waters of Sentry Shoals within a 1.50Nm radius of the Sentry Shoal Marker Buoy.

Effective June 15 to August 15 there is non-retention of chinook salmon in the following waters:

- Those waters of Lambert channel bounded from a marker off Nile Creek, north along Vancouver shoreline to Mapleguard Point, thence along the Harbour limit boundary to southern point of Chrome Island, then to southern tip of Denman Island, thence north along shore to Whalebone Point, thence to *Shingle Spit* on Hornby Island, thence along the shore to Norman Point, thence south from Norman Point 2.4Nm to a position (49 28.25'N and 124 36.54'W), and back to Nile Creek marker.



FISHERY NOTICE AREA 14 COURTENAY, COMOX AND QUALICUM 2007 OPENINGS AND CLOSURES

FINFISH CLOSURES

Effective May 1 to August 31 the following waters will be closed to fishing for all finfish:

- In Area 14, Comox Harbour - inside a line from a fishing boundary sign near Trent River to a light at the tip of Goose Spit, except the shallow shore line defined as the waters inside and shoreward of the 2 m depth contour measured below the chart datum (0 tide). You may fish from the shoreline.

Effective September 1 to November 30 the following waters will be closed to fishing for all finfish:

- In Area 14, the tidal waters within a 75 m radius of the mouth of the Trent River, the mouth of Hart (Washer) Creek and the mouth of Millard Creek.

ROCKFISH CONSERVATION AREAS

Closed to fishing for all finfish: Area 14 has eight (8) Rockfish Conservation Areas (see the red shaded area of the above map). These areas are closed to all finfishing. The RCAs on the south side of Texada Island and the north side of Lasqueti Island are in Area 16. For more information regarding Rockfish Conservation Areas in the Pacific Region go to the website:

www.pac.dfo-mpo.gc.ca/recfish/Restricted_Areas/RCAs/default_e.htm

REGULATIONS CHANGE IN-SEASON!

www.pac.dfo-mpo.gc.ca/recfish

**1-866-431-FISH (3474)
250-339-2031 DFO Office**

Report Fishing Violations 1-800-465-4336