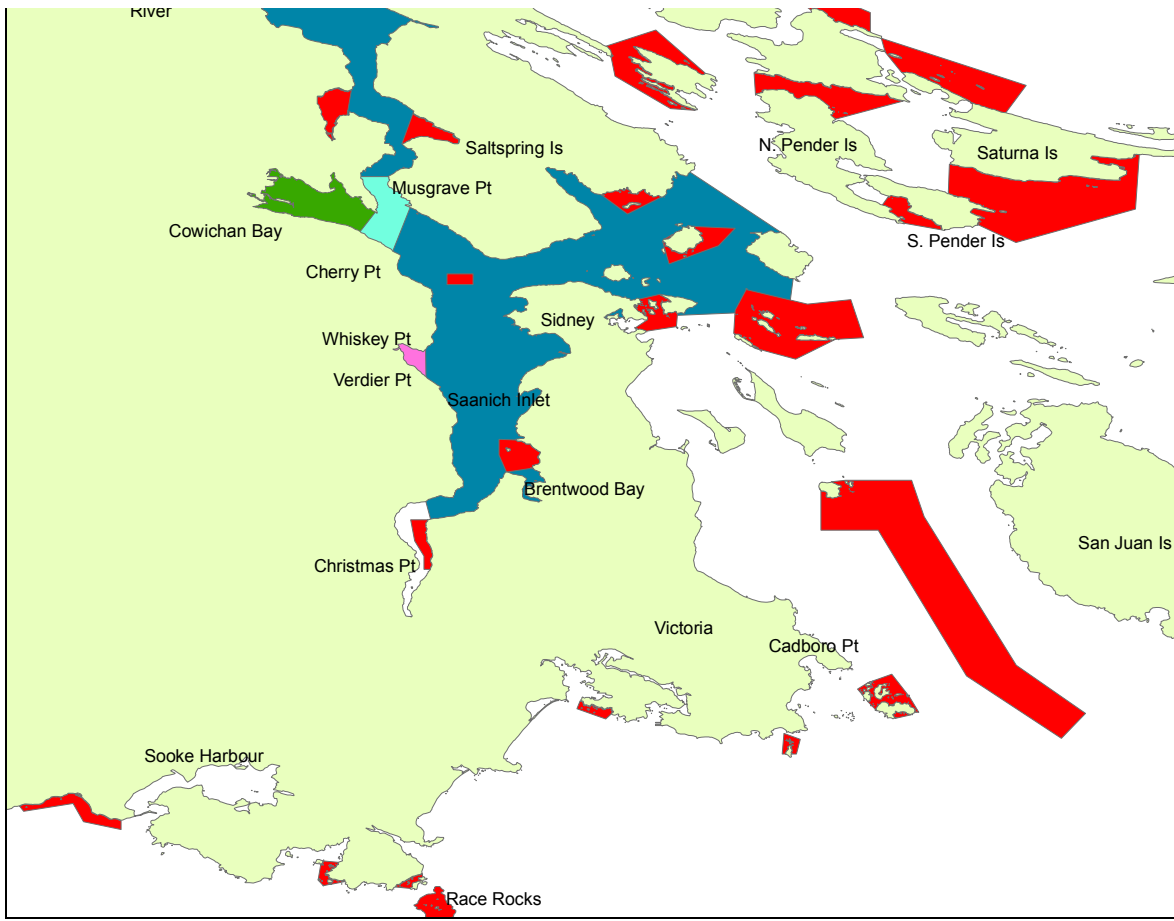




FISHERY NOTICE AREA 18, 19 AND 20 COWICHAN TO VICTORIA 2007 OPENINGS AND CLOSURES



	Jan 1 - Dec 31	Rockfish Conservation Closure- No Fishing
	Aug 1 - Oct 31	Angling Closure
	Aug 1 - Oct 15	Angling Closure
	Sept 15 – Nov 30	Angling Closure
	Aug 1 - Oct 15	Chinook Non-Retention

NOTES

The combined aggregate daily limit for Pacific Salmon is four (4) per day.

The possession limit is twice the daily limit.

When fishing for salmon, Fishers are required to use barbless hooks.

Sockeye Closed, opportunities to be announced.



FISHERY NOTICE

AREA 18, 19 AND 20 COWICHAN TO VICTORIA

2007 OPENINGS AND CLOSURES

DEFINITIONS

“**Hatchery marked or marked**” means a fish that has a healed scar in place of the adipose, pelvic, or pectoral fin, or in place of a maxillary.

CHINOOK

January 1 to December 31	<p>The daily limit is two (2) chinook with a minimum size limit of 62cm.</p> <p>The daily limit is two (2) chinook with a minimum size limit of 45cm: In Subarea 19-1 to 19-4 (south of Cadboro Point).</p> <p>The daily limit is two (2) chinook with a minimum size limit of 62cm: In Subarea 19-5 to 19-12 (north of Cadboro Point).</p>
August 1 to October 15	<p>There is non retention of chinook in the following waters:</p> <p>In Subareas 18-6 to 18-8, 18-10 (Fulford Harbour, Satellite Channel, Shute Passage, Sansum Narrows).</p> <p>In Subareas 18-7 and 18-8, that portion of Subarea 18-7 that lies northerly of a line from a square white boundary sign on Vancouver Island, near 48°46.179'N and 123°34.654'W, to a square white boundary sign on Saltspring Island SE of Burial Islet, near 48°45.992'N and 123°33.777'W, and southerly of a line from a square white boundary sign on Saltspring Island approximately 1.5 nautical miles ESE of Musgrave Point, near 48°43.982'N and 123°31.418'W, to a square white boundary sign on Vancouver Island approximately 0.5 nautical miles NW of Cherry Point, near 48°43.197'N and 123°33.708'W.</p> <p>In Subareas 19-7 to 19-10.</p>

COHO

November 1 to December 31	The daily limit is two (2) coho per day: In Subarea 18- 8, inside of a line between Separation Point and Cherry Point.
October 1 to December 31	The daily limit is two (2) coho per day of which one may be wild: In Area 19.



FISHERY NOTICE AREA 18, 19 AND 20 COWICHAN TO VICTORIA 2007 OPENINGS AND CLOSURES

ALL SALMON

August 1 to October 15	Closed to all fishing: In Subareas 18-8, and that portion of Subarea 18-7 that lies northerly of a line from a square white boundary sign on Vancouver Island, near 48°46.179'N and 123°34.654'W, to a square white boundary sign on Saltspring Island SE of Burial Islet, near 48°45.992'N and 123°33.777'W, and southerly of a line from a square white boundary sign on Saltspring Island approximately 1.5 nautical miles ESE of Musgrave Point, near 48°43.982'N and 123°31.418'W, to a square white boundary sign on Vancouver Island approximately 0.5 nautical miles NW of Cherry Point, near 48°43.197'N and 123°33.708'W.
August 1 to October 31	Closed to all fishing: In a portion of Subarea 18-8, the waters of Cowichan Bay, inside a line from a fishing boundary sign near Separation Point on Vancouver Island to Wilcuma Wharf.
September 1 to November 30	Closed to all fishing: In Subarea 19-12 (Saanich Inlet, south of Christmas Point).
September 15 to November 30	Closed to all fishing: In a portion of Subarea 19-8, the waters inside a line from Whiskey Point to Verdier Point in Saanich Inlet.
October 10 to January 15	Only a single pointed hook may be used: In Subarea 18-10, the waters of Fulford Harbour inside or NW of a line between a fishing boundary sign located near the navigation light and Jackson Rock on the north shore of Fulford Harbour, across the Harbour to a boundary sign on the opposite shore.

ROCKFISH CONSERVATION AREAS

Closed to fishing for all finfish: Areas 18, 19 and 20 have twenty-three (23) Rockfish Conservation Areas. These areas are closed to all finfishing. For more information regarding Rockfish Conservation Areas in the Pacific Region go to the website:

www.pac.dfo-mpo.gc.ca/recfish/Restricted_Areas/RCA/default_e.htm

REGULATIONS CHANGE IN-SEASON!

www.pac.dfo-mpo.gc.ca/recfish

1-866-431-FISH (3474)

1-250-746-9721 DFO Office

Report Fishing Violations 1-800-465-4336