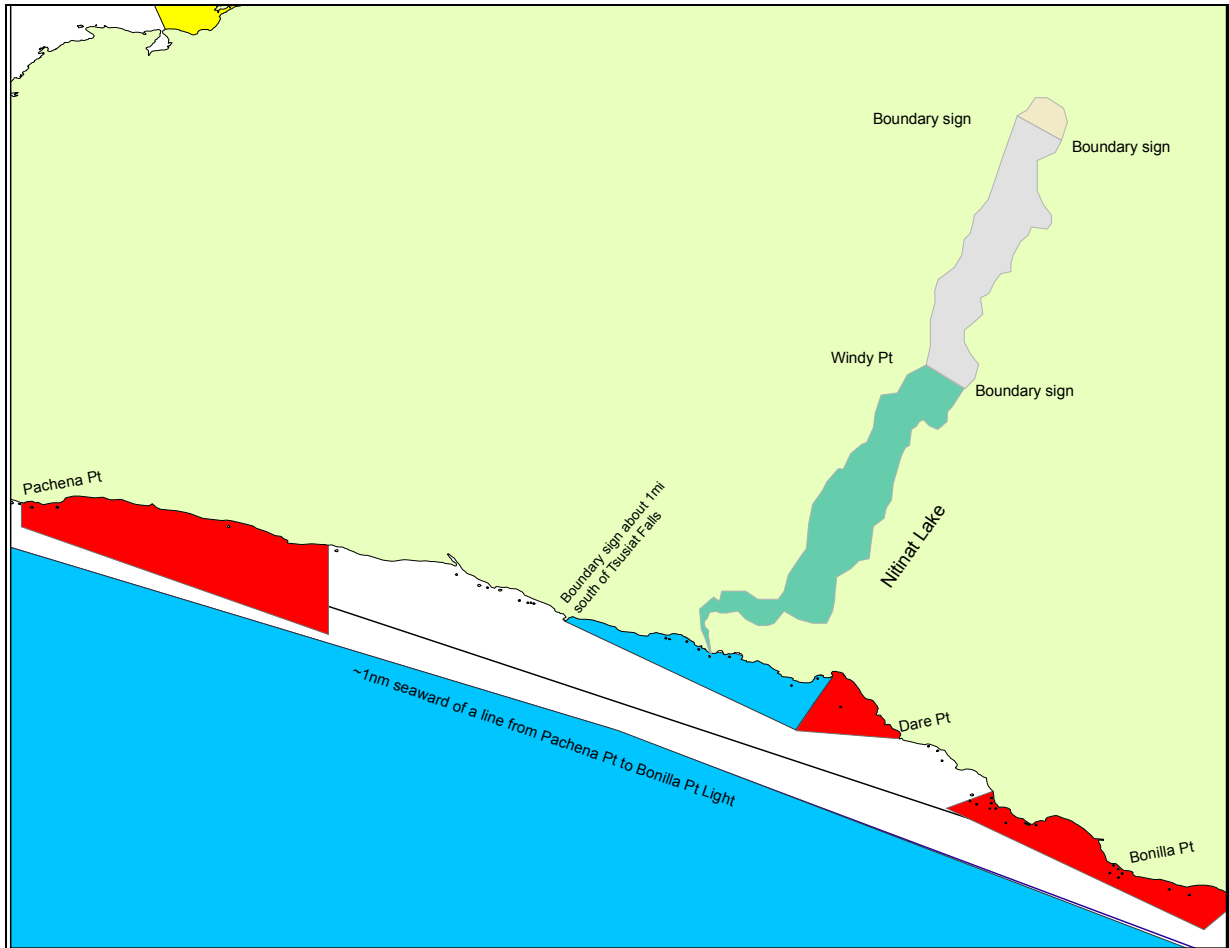




FISHERY NOTICE

AREA 21/22/121 – NITINAT / SWIFTSURE BANK

2007 OPENINGS AND CLOSURES



	Jan 1 – Dec 31	Rockfish Conservation Closure – Finfish Closure
	Aug 1 – Oct 31	Salmon Non Retention
	Aug 1 – Oct 31	Fin Fish Closure
	Jan 1 – Dec 31 June 1 – Aug 31 Sept 1 – Dec 31	Two (2) Chinook per day, min size 45 cm. Two (2) Hatchery marked coho per day. Four (4) Hatchery marked coho per day.
	Jan 1 – Dec 31 June 1 – Dec 31	Two (2) Chinook per day, min size 45 cm. Four (4) Coho per day.
	Aug 1 – Oct 15	Two (2) Chinook per day, only one (1) may be greater than 77cm.
	June 1 – Aug 31 Sept 1 – Dec 31	Two (2) Hatchery marked coho per day. Four (4) Hatchery marked coho per day.



FISHERY NOTICE

AREA 21/22/121 – NITINAT / SWIFTSURE BANK

2007 OPENINGS AND CLOSURES

NOTES

The combined aggregate daily limit for Pacific Salmon is four (4) per day.

The possession limit is twice the daily limit.

When fishing for salmon, Fishers are required to use barbless hooks.

DEFINITIONS

“**Hatchery marked or marked**” means a fish that has a healed scar in place of the adipose, pelvic, or pectoral fin, or in place of a maxillary.

CHINOOK

January 1 to December 31	Daily limit is two (2) chinook with a minimum size of 45 cm: In that portion of Area 22 southerly of a line from a boundary sign at Windy Point in Nitinat Lake to a boundary sign on the opposite shore.
August 1 to October 15	Daily limit is two (2) per day, only one of which may be greater than 77 cm: In Area 21, seaward of a line from the boundary sign about 1 mile southeast of Tsusiat Falls, then to the marker buoy off Clo-oose, then to Dare Point.
August 1 to October 15	Daily limit is two (2) per day, only one of which may be greater than 77 cm: In Area 121, shoreward of a line 1 nautical mile seaward of a line from Pachena Point to Bonilla Point light.

COHO

June 1 to August 31	Daily limit is two (2) coho, both of which must be hatchery marked: In those waters of Areas 21 and 121.
September 1 to December 31	Daily limit is four (4) coho, both of which must be hatchery marked: In those waters of Areas 21 and 121.
June 1 to December 31	Daily limit is four (4) coho, hatchery marked: Southerly of a line from Windy Point to a boundary sign on the opposite shore.

ALL SALMON

August 1 to October 31	Only a single-pointed hook may be used: In Area 22.
August 1 to October 31	No fishing for salmon: Northeasterly of a line from Windy Point to a boundary sign on the opposite shore.



FISHERY NOTICE
AREA 21/22/121 – NITINAT / SWIFTSURE BANK
2007 OPENINGS AND CLOSURES

FINFISH CLOSURES

January 1 to December 31	Closed to fishing for all finfish: In Subareas 121-1 and 121-2 (Swiftsure Bank), inside a line from 48°34.00'N and 125°06.00'W, thence to 48°34.00'N and 124°54.20'W, thence to 48°29.62'N and 124°43.40'W, thence following the International Boundary between Canada and the U.S. to 48°29.55'N and 124°56.20'W, thence in a straight line to the point of commencement.
August 1 to October 31	Closed to fishing for all finfish: In those waters of Area 22 (Nitinat Lake) that lie inside or northeasterly of a line from boundary signs at the northeastern and northwestern tips of land at the head of the lake.

ROCKFISH CONSERVATION AREAS

Closed to fishing for all finfish: Areas 21/22/121 have three (3) Rockfish Conservation Areas. These areas are closed to all finfishing. For more information regarding Rockfish Conservation Areas in the Pacific Region go to the website:

www.pac.dfo-mpo.gc.ca/recfish/Restricted_Areas/RCA/default_e.htm

REGULATIONS CHANGE IN-SEASON!

www.pac.dfo-mpo.gc.ca/recfish

1-866-431-FISH (3474)

1-250-720-4440 DFO Office

Report Fishing Violations 1-800-465-4336



FISHERY NOTICE AREA 21/22/121 – NITINAT / SWIFTSURE BANK 2007 OPENINGS AND CLOSURES

Sport Fishing Regulation Change and Safety Notice for the Vicinity of Swiftsure Bank (Area 21/121)

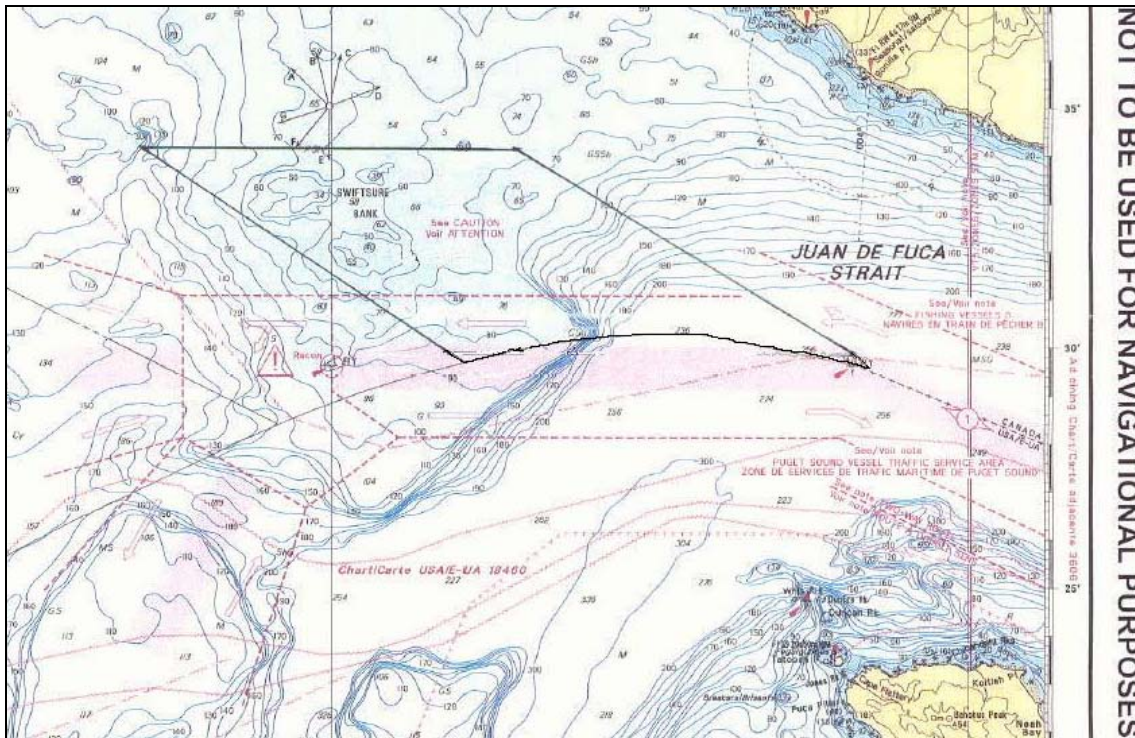
Sport Fishing for any finfish including salmon, halibut, rockfish and lingcod is closed until further notice in the following area at Swiftsure Bank:

Those waters inside a line from 48°34.00'N and 125°06.00'W, thence to 48°34.00'N and 124°54.20'W, thence to 48°29.62'N and 124°43.40'W, thence following the International Boundary to 48°29.55'N and 124°56.20'W, thence in a straight line to the point of commencement.

This action is taken in the interest of redistribution of the halibut catch in the Canadian Zone.

A similar closure has been implemented in the commercial sector.

To report a Fisheries Violation, call Toll Free (24 hrs): 1-800-465-4336



Safety Notice:

There is an increased risk of collision while engaged in fishing in the area of buoy Juliet locally known as the “Chicken Ranch”. Buoy Juliet marks the entrance to the new traffic separation scheme that was jointly developed by U.S. and Canadian Authorities. While fishing in the outbound traffic lane you will continue to experience deep-sea boats transiting through your immediate area.



FISHERY NOTICE AREA 21/22/121 – NITINAT / SWIFTSURE BANK 2007 OPENINGS AND CLOSURES

Rule 10 of the Collision Regulations (COLREGS) prohibits boats engaged in fishing, sailing boats, and boats of less than 20 meters from impeding the safe passage of a power-driven vessel that is following a traffic lane. The “do not impede” provisions of Rule 10 enhance the order, predictability, and safety of vessel movements.

If you intend to fish in a traffic lane, it is recommended that you advise Tofino MCTS (“Tofino Traffic”) on Channel 74, and then continue to monitor that channel. To mitigate the risk of collision, all boats are required to comply with Rule 10 of the Collision Regulations and not impede the progress of outbound (or inbound) transiting boats if you are fishing in a traffic lane.

For more information regarding the Safety Notice contact: David Heap, Superintendent, MCTS Pacific.

Telephone: (250) 363-8922

Email: HeapDa@pac.dfo-mpo.gc.ca