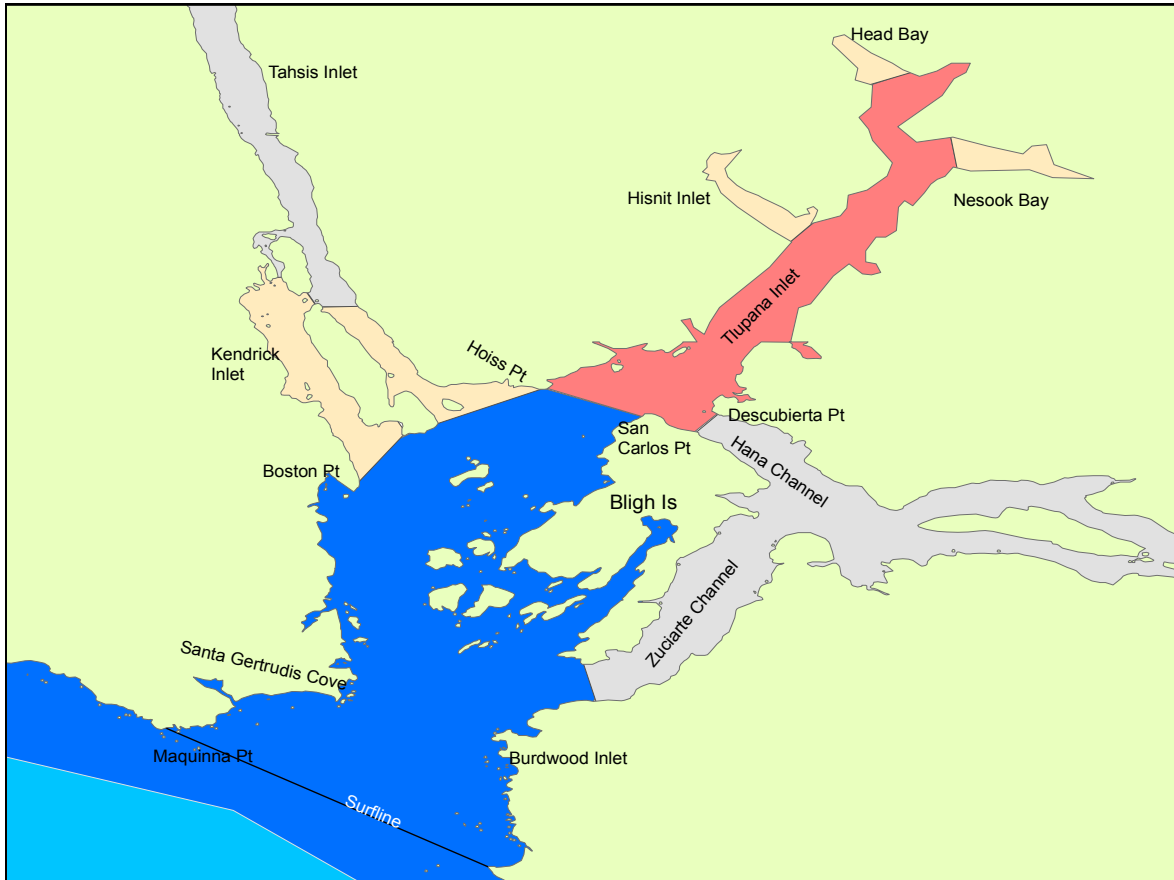






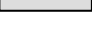


# FISHERY NOTICE

## AREA 25 / 125 NOOTKA SOUND

### 2007 OPENINGS AND CLOSURES - CHINOOK



	Jan 01 - Dec 31	Two (2) Chinook per day, minimum size of 45 cm.
	July 15 - Oct 15	Two (2) Chinook per day, only one (1) may be greater than 77 cm in length.
	June 01 - Dec 31	Two (2) Chinook per day, minimum size of 45 cm.
	July 15 - Oct. 15	Finfish Closure
	July 15 - Oct. 15	Salmon Non-retention Areas

#### NOTES

The combined aggregate daily limit for Pacific Salmon is four (4) per day.  
The possession limit is twice the daily limit.  
When fishing for salmon, fishers are required to use barbless hooks.

#### DEFINITIONS

**“Hatchery marked or marked”** means a fish that has a healed scar in place of the adipose, pelvic, or pectoral fin, or in place of a maxillary.



## FISHERY NOTICE AREA 25 / 125 NOOTKA SOUND 2007 OPENINGS AND CLOSURES - CHINOOK

### AREA 125 - OFFSHORE

Effective January 1 through December 31 the daily limit remains at two (2) chinook, with a minimum size limit of 45 cm for those waters:

- seaward of a line approximately one (1) nautical mile seaward of the surfline (*light blue area on map*)

Effective July 15 through October 15 the daily limit is two (2) chinook, only one (1) of which may be greater than 77 cm:

- in those waters of Area 125 that lie shoreward of a line drawn approximately one (1) nautical mile seaward of the surfline. (*dark blue area on map*)

### AREA 25 – NOOTKA SOUND

Effective July 15 through October 15 the daily limit is two (2) chinook, only one (1) of which may be greater than 77 cm:

- in those waters of Area 25 that lie **shoreward** of the surfline to a boundary line from Boston Pt. to Salter Point to Hoiss Pt. to a boundary sign on Bligh Island (at or near latitude 49 40.77'N and longitude 126 30.20'W) and to a boundary line from the Clerk Peninsula on Bligh Island to the Zuicarte Channel South Light. (*dark blue area on map*)

Effective June 1 through December 31 the daily limit remains two (2) chinook with a 45 cm minimum size limit:

- those waters north of a line from boundary signs at Hoiss Pt. to Bligh Island (at or near latitude 49 40.77'N and longitude 126 30.20'W) and across to 250 metres east of Descubierta Point (at or near latitude 49 41.12'N and longitude 126 29.81'W) (*pink area on map*).

### SALMON NON RETENTION

Effective July 15 until October 15 there is **non-retention (0)** of all salmon in the following waters:

- **Hanna Channel and Muchalat Inlet** eastward of a line from San Carlos Pt. on Bligh Island (at or near latitude 49 40.77'N and longitude 126 30.20'W) and across to 250 metres east of Descubierta Point. (at or near latitude 49 41.12'N and longitude 126 29.81'W).
- **Zuciarte Channel** northward of a line from the light on the southern tip of Clerke Peninsula to Zuciarte Channel South light.
- **Tahsis Inlet** bounded on the north by a line from Mozino Pt to a boundary sign of the opposite shore of Tahsis Inlet and bounded on the south by a line from the most northerly point of Strange Island to a boundary sign on the opposite shore of Tahsis Inlet.



**FISHERY NOTICE**  
**AREA 25 / 125 NOOTKA SOUND**  
**2007 OPENINGS AND CLOSURES - CHINOOK**

**FINFISH CLOSURES**

Effective July 15 to October 15 the following waters will be closed to fishing for all finfish:

- **Nesook Bay** inside a line from boundary signs on opposite sides of the bay.
- **Hisnit Inlet** inside a line from boundary signs at the entrance to the inlet.
- **Head Bay** in upper Tlupana Inlet inside a line from boundary signs at the entrance to the bay.

Effective July 15 to October 15 the following waters will be closed to fishing for all finfish:

- **Kendrick Inlet** inside a line from a boundary sign on Boston Point to a boundary sign at Salter Point on the southern tip of Strange Island.
- **Tahsis Inlet** bounded on the north by a line from the most northerly point of Strange Island to a boundary sign on the opposite shore of Tahsis Inlet and bounded on the south by a line from Salter Point on the southern tip of Strange Island to Hoiss Point on Vancouver Island.

**ROCKFISH CONSERVATION AREAS**

**Closed to fishing for all finfish:** Area 25 has one (1) Rockfish Conservation Areas located off Bajo Reef. These areas are closed to all finfishing. For more information regarding Rockfish Conservation Areas in the Pacific Region go to the website:

**[www.pac.dfo-mpo.gc.ca/recfish/Restricted\\_Areas/RCA/default\\_e.htm](http://www.pac.dfo-mpo.gc.ca/recfish/Restricted_Areas/RCA/default_e.htm)**

**REGULATIONS CHANGE IN-SEASON!**

**[www.pac.dfo-mpo.gc.ca/recfish](http://www.pac.dfo-mpo.gc.ca/recfish)**

**1-866-431-FISH (3474)**

**1-250-720-4440 DFO Office**

**Report Fishing Violations 1-800-465-4336**