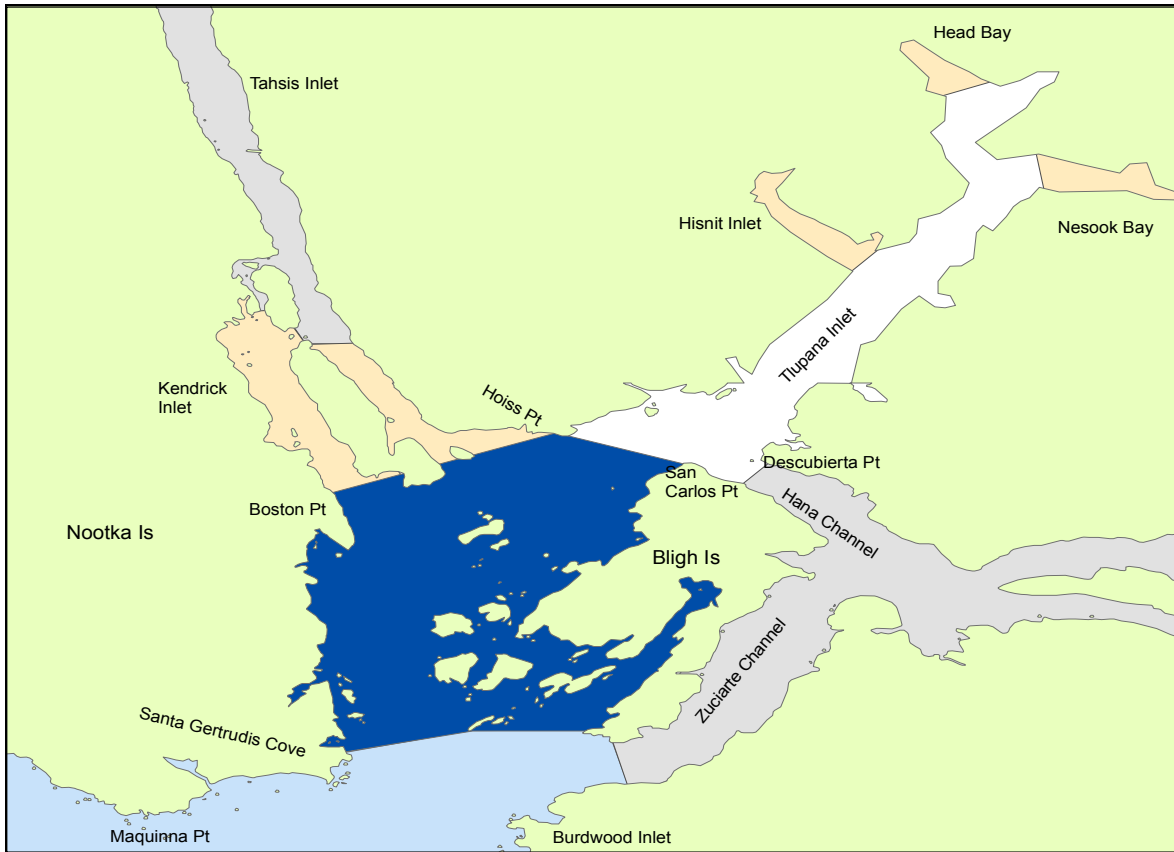




# FISHERY NOTICE

## AREA 25 / 125 NOOTKA SOUND

### 2007 OPENINGS AND CLOSURES - COHO



	June 01 - July 31 Aug 01 - Dec 31	Two (2) hatchery marked or unmarked per day Four (4) hatchery marked or unmarked per day
	June 01 - Aug 31 Sep 01 - Dec 31	Two (2) hatchery marked or unmarked per day Four (4) hatchery marked or unmarked per day
	June 01 - Aug 31 Sep 01 - Dec 31	Two (2) hatchery marked per day Four (4) hatchery marked per day
	July 15 - Oct. 15	Finfish Closure
	July 15 - Oct. 15	Salmon Non-retention Areas

#### **NOTES**

The combined aggregate daily limit for Pacific Salmon is four (4) per day.

The possession limit is twice the daily limit.

When fishing for salmon, fishers are required to use barbless hooks.



## FISHERY NOTICE AREA 25 / 125 NOOTKA SOUND 2007 OPENINGS AND CLOSURES - COHO

### DEFINITIONS

“**Hatchery marked or marked**” means a fish that has a healed scar in place of the adipose, pelvic, or pectoral fin, or in place of a maxillary.

### AREA 125 - Offshore Waters and Portions of Area 25

Effective June 01 to August 31 the daily coho limit is **two (2)** hatchery marked coho; and then effective September 1 to December 31 the daily coho limit is **four (4)** hatchery marked coho in the following waters:

- All Subareas of Area 125 (*light blue coloured area*)
- All of Subarea 25-7 and a portion of Subarea 25-6 seaward of a line from Zuciarte Channel South Light to Clerke Peninsula Light to the southern tip of the Pantoja Islands to the southern entrance to Santa Gertrudis Cove (*light blue coloured area*)

### AREA 25 – NOOTKA SOUND

Unless otherwise indicated below, prior to the July 15th implementation of both fin fish and salmon non retention closures all areas within Nootka Sound are open to the **retention of two (2) coho** per day either marked or unmarked coho inside the Coho Boundary which lies shoreward of a line from Burdwood Point, north-northwesterly to the most southerly point of the Pantoja Islands thence to the southern entrance to Santa Gertrudis Cove. Effective June 01, as indicated below, the **daily coho limit** is as described throughout Area 25.

Effective June 01 to July 31 the **daily coho limit** is **two (2)** hatchery marked or unmarked coho; and then effective August 01 to December 31 the **daily coho limit** is **four (4)** hatchery marked or unmarked coho:

- Subarea 25-5, excluding Nesook Bay and Head Bay and, Hisnit Inlet that portion of sub area 25-4 shoreward (northerly) of a line from Hoiss Pt thence to Bligh Island (at or near latitude 49 40.77’N and longitude 126 30.20’W) and across to 250 metres east of Descubierta Point (at or near latitude 49 41.12’N and longitude 126 29.81’W)(*dark blue coloured area*)

Effective June 01 to August 31 the daily coho limit is **two (2)** hatchery marked or unmarked coho; and then effective September 1 to December 31 the daily coho limit is **four (4)** of which only **two (2)** may be unmarked coho:

- Subareas 25-1 to 25-5, 25-8 to 25-12, 25-14 to 25-16, and a portion of Subarea 25-6 inside a line from the southern entrance to Santa Gertrudis Cove thence to the southernmost tip of Pantoja Islands, thence to the Clerke Peninsula Light, thence to the navigation light found there on the opposite shore of Zuciarte Channel on the Vancouver Island shoreline (*green coloured area*)



## FISHERY NOTICE AREA 25 / 125 NOOTKA SOUND 2007 OPENINGS AND CLOSURES - COHO

### SALMON NON RETENTION

Effective July 15 until October 15 there is **non-retention (0) of all salmon** in the following waters:

- **Hanna Channel and Muchalat Inlet** eastward of a line from San Carlos Pt. on Bligh Island (at or near latitude 49 40.77'N and longitude 126 30.20'W) and across to 250 metres east of to Descubierta Point. (at or near latitude 49 41.12'N and longitude 126 29.81'W).
- **Zuciarte Channel** northward of a line from the light on the southern tip of Clerke Peninsula to Zuciarte Channel South light.
- **Tahsis Inlet** bounded on the north by a line from Mozino Pt to a boundary sign of the opposite shore of Tahsis Inlet and bounded on the south by a line from the most northerly point of Strange Island to a boundary sign on the opposite shore of Tahsis Inlet.

### FINFISH CLOSURES

Effective July 15 to October 15 the following waters will be closed to fishing for all finfish:

- **Nesook Bay** inside a line from boundary signs on opposite sides of the bay.
- **Hisnit Inlet** inside a line from boundary signs at the entrance to the inlet.
- **Head Bay** in upper Tlupana Inlet inside a line from boundary signs at the entrance to the bay.

Effective July 15 to October 15 the following waters will be closed to fishing for all finfish:

- **Kendrick Inlet** inside a line from a boundary sign on Boston Point to a boundary sign at Salter Point on the southern tip of Strange Island.
- **Tahsis Inlet** bounded on the north by a line from the most northerly point of Strange Island to a boundary sign on the opposite shore of Tahsis Inlet and bounded on the south by a line from Salter Point on the southern tip of Strange Island to Hoiss Point on Vancouver Island.

### ROCKFISH CONSERVATION AREAS

**Closed to fishing for all finfish:** Area 25 has one (1) Rockfish Conservation Areas located off Bajo Reef. These areas are closed to all finfishing. For more information regarding Rockfish Conservation Areas in the Pacific Region go to the website:

[www.pac.dfo-mpo.gc.ca/recfish/Restricted\\_Areas/RCA/default\\_e.htm](http://www.pac.dfo-mpo.gc.ca/recfish/Restricted_Areas/RCA/default_e.htm)

**REGULATIONS CHANGE IN-SEASON!**

[www.pac.dfo-mpo.gc.ca/recfish](http://www.pac.dfo-mpo.gc.ca/recfish)

**1-866-431-FISH (3474)**

**1-250-720-4440 DFO Office**

**Report Fishing Violations 1-800-465-4336**



Fisheries and Oceans  
Canada

Pêches et Océans  
Canada

**Canada**

**FISHERY NOTICE  
AREA 25 / 125 NOOTKA SOUND  
2007 OPENINGS AND CLOSURES - COHO**