

# Shellfish

## Points to remember when shellfish fishing


- You must purchase a tidal waters sport fishing licence prior to fishing for shellfish.
- Check to determine if the area you intend to fish is open. Some areas are closed for the harvest of some species of shellfish for conservation or health reasons.
- Check to determine what the size and daily limits are for the species you intend to catch.
- Abalone is closed to harvesting by all persons, all year.
- Bivalve molluscs are shellfish with two shells, such as clams, oysters, scallops, mussels and cockles.
- It is prohibited to possess female crabs.
- Bivalve molluscs and crab that you harvest may be shucked or cooked while in the field (i.e.: on a beach), however they must remain in a condition where they can be readily counted and identified until such time as they arrive at your ordinary residence.
- Crabs must be measured immediately and undersized crabs must be immediately released gently to the water. Throwing crabs into the water from elevated heights of wharves and docks is harmful to crab.
- Prawns carrying eggs under their tail should be released for conservation purposes.
- Never hang your shellfish off docks or the side of a vessel when travelling, as these waters may be contaminated.
- It is illegal to harvest shellfish from closed or contaminated areas.
- It is illegal to use any mechanical apparatus or dredge for harvesting clams.



### Did you know...

Scallops have a line of 100 eyes around the rim of their shells that sense light and moving objects; they also have tentacles that sense odours and temperature.

Expect in-season changes to the information in this Guide. Check for updates prior to fishing. Regulation changes are posted on the DFO website:

 [www.pac.dfo-mpo.gc.ca/recfish](http://www.pac.dfo-mpo.gc.ca/recfish)

Be aware of trap gear entanglement risks in the vicinity of the UVIC Venus project in Pat Bay, Saanich Inlet. For more information, visit:

 [www.venus.uvic.ca/notice.html](http://www.venus.uvic.ca/notice.html)

# Types of Shellfish Contamination

Gathering shellfish to eat is a favourite pastime, but it can be harmful or even fatal if the shellfish are contaminated. Bivalve molluscs such as clams, oysters, scallops, and mussels feed by filtering the water in their environment.

Bivalve shellfish can accumulate toxins, bacteria, or pollutants from surrounding waters. Water and shellfish sampling programs are undertaken by DFO, Environment Canada, and the Canadian Food Inspection Agency to ensure that areas are safe for shellfish harvesting. Areas that exceed the allowable limits of any harmful substances are closed to shellfish harvesting.

Shellfish may also be contaminated by human or animal faeces that contain bacteria or viruses hazardous to human health.

Contact a local DFO for closures details, call 1-866-431-3474, or visit the DFO website at:  [www.pac.dfo-mpo.gc.ca/PSP](http://www.pac.dfo-mpo.gc.ca/PSP)

## Paralytic Shellfish Poisoning (PSP or “Red Tide”)

Microscopic marine organisms produce toxins that can accumulate in bivalve shellfish such as clams, oysters, mussels and scallops. These algal blooms are not always visible in the water and are not always red.

Eating bivalves contaminated with Red Tide can lead to paralytic shellfish poisoning (PSP), a serious illness that may be fatal.

*Cooking does not destroy the PSP toxins.*

Only bivalve shellfish accumulate the toxin by filter-feeding; other shellfish such as shrimp are not affected. Crabs and predatory molluscs such as moon snails may concentrate the toxin in their viscera. Paralytic shellfish poisoning can occur at any time of the year and may change rapidly in season.

**Consumption risks:** This is a serious illness that can cause paralysis or death.

**To reduce the risks:** Immediately prior to harvesting, check to ensure that the area where you intend to harvest is open.



Watch for this symbol on signs around B.C. and ensure the area is open and safe prior to harvesting.

**Closures due to PSP are NOT listed in this Guide, as they change VERY OFTEN and QUICKLY in-season.**

Discard the viscera of crabs if they are harvested in areas closed for PSP. In areas open to butter clams, discard the siphon (neck), gills, and liquid released during cooking. In areas open for scallops, discard the roe and viscera.

**Be aware of the symptoms:** Tingling of lips and tongue that may spread to fingers and toes, headache, or dizziness. As the effect of the toxin progresses, there could be a loss of muscular co-ordination, paralysis, and an inability to breathe.

### **Amnesic Shellfish Poisoning (ASP or Domoic Acid)**

Similar to the PSP toxin, ASP toxins come from algae blooms in the marine environment that accumulate in the filter-feeding bivalve shellfish.

**Consumption risks:** Although there have been no reported illnesses from ASP in B.C., the toxin has been found in B.C. shellfish. In other areas of Canada, people have become ill from eating ASP contaminated shellfish. The symptoms of this illness are nausea, vomiting, diarrhea and memory loss.

**To reduce the risks:** Check to ensure that the area where you intend to harvest is open, immediately prior to harvesting.

### **Sanitary Contamination**

Shellfish may be contaminated by human or animal faeces that contain bacteria or viruses hazardous to human health. Pathogens such as Norwalk virus, Hepatitis A virus, or salmonella may be concentrated in bivalve shellfish that live in sanitary contaminated areas.

Full descriptions of sanitary contamination closures are not listed in this Guide.

Visit  [www.pac.dfo-mpo.gc.ca/PSP](http://www.pac.dfo-mpo.gc.ca/PSP) for maps and descriptions

**Consumption risks:** Consumption of raw or partially cooked bivalve shellfish from contaminated areas increases the risk of illness, especially for individuals with certain medical conditions or with compromised immune systems.

**To reduce the risks:** Check to ensure that the area where you intend to harvest is open, immediately prior to harvesting. As an added precaution, cooking the shellfish may destroy the common micro-organisms of public health concern.

### **Vibrio Parahaemolyticus (VP)**

A type of bacteria that is naturally found in our coastal waters. It is more prevalent in the summer with water temperatures and can concentrate in filter feeding bivalve shellfish.

**An Area may be open to shellfish harvesting, however the shellfish may still contain VP.**

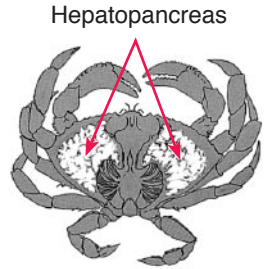
**Consumption risks:** Illness such as diarrhea, nausea and vomiting. Contact your doctor or Local Health authority if you get sick.

**To reduce the risks:** Store bivalve shellfish frozen at -18 degrees Celsius, or refrigerate at 4 degrees Celsius, and cook the shellfish for five minutes at 60 degrees Celsius. Only harvest shellfish at the water’s edge when the tide is going out. Refrigerate immediately. Wash your hands after handling raw seafood; use only treated drinking water to rinse ready-to-eat seafood.

### Dioxin

Consumption advisories have been put in place for shellfish contaminated by dioxins and furans. The restrictions apply to recreational harvesting of certain species at specific sites.

In crab, some kinds of contamination are primarily concentrated in the hepatopancreas. While this portion of the crab is not usually eaten, some individuals may consume it. Consumption advisories pertain to this portion of the crab only.



### Recreational Shellfish Reserves

Recreational reserves are fishing locations that are closed to commercial harvesting. These reserves are open for the harvest of recreational bivalve shellfish only and have been established throughout the Strait of Georgia to protect various species. Check with the local DFO office for Reserve locations.

### Shellfish Tenures

Harvesting shellfish from clam or oyster aquaculture sites is not permitted unless permission is obtained from the tenure holder. These sites may be marked with large red concrete markers.

# Shellfish Traps and Rings

## Marking, Buoys and Buoy Lines

If fishing from a dock or from shore, a tag **must** be marked with the operator's name to the line that has the trap or ring net attached to the other end.

If fishing in open waters, all shellfish trap /ring buoys **must** be clearly marked with the name of the person fishing the gear (the operator's name must be printed in solid black, capital letters at least 75 mm high). Only one name can appear on the float or buoy. It is recommended that you include your phone number.

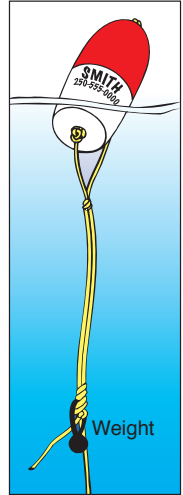
All single traps must be marked with a buoy.

Buoys must be highly visible and of sufficient size for the tides and current in your fishing area so as not to submerge. Household plastic jugs, bottles or Styrofoam chunks are **not** recommended for use as buoys as they are difficult to see in the water, difficult to mark with identification, and tend to deteriorate and sink.

Ensure that your buoy line doesn't float and become entangled in boaters' props. Either use sinking line or, if you use floating line, attach a weight to keep the excess line below the surface of the water at all tide levels without sinking the buoy.

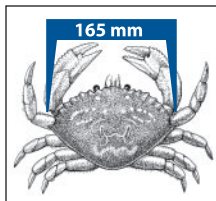
Keep navigation channels clear of buoys and lines to allow for safe navigation. Any fishing gear that hinders or impedes safe navigation may be removed under the *Navigable Waters Protection Act*.

Mechanical devices may be used to recover traps.



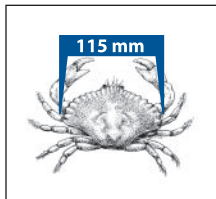
## Crabs and Crab Gear

**Dungeness crab** must measure at least **165 mm**.



Dungeness crab

**Red Rock crab** must measure at least **115 mm**.

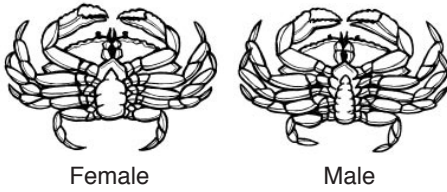


Red Rock crab

A crab is measured in a straight line through the **widest part of the carapace**, or shell, from outside the points.

Harvesters are advised to measure crabs **using a calliper device**.  
Undersized crab must be returned to the water immediately.

The carapace must remain attached until consumed or until the crab arrives at your ordinary residence.



**You may not possess female crabs.** All female crabs must be immediately returned to the water in a manner that causes the least harm. The female’s abdomen has a wide “beehive” shape; the male’s has a narrow “lighthouse” shape.

All crab traps **must** have a section in the top or sidewall that has been secured by a length of untreated cotton twine no greater than No. 120. On deterioration this must produce a rectangular opening with a minimum size of 7 cm x 20 cm, or a square opening with a minimum size of 11 cm x 11 cm. This regulation is intended to ensure that if the trap is lost, the section secured by the cord will rot, allowing captive crabs to escape, and preventing the trap from continuing to fish.



If two crab traps are attached to one ground-line, you may mark the ground-line with only one buoy.

It is illegal to use more than two rings, dip nets or traps or a combination of these to fish for crabs.

For more information on crab harvesting, ask a DFO office for a *Sport Fishing Guidelines for Crab* brochure.

### **Shrimp and Prawn Gear**

If more than two traps are attached to one ground line, as is permitted when fishing only for shrimp or prawns, a buoy with the operators name as described previously must be attached to each end of the ground line.

When fishing for shrimp or prawns, release all non-targeted species quickly to the water.

Prior to fishing, check for changes to shrimp and prawn management measures in Sannich Inlet, Stuart Channel, Alberni Inlet and other areas. Seasonal closures and other in-season management measures may be introduced to protect adult females carrying eggs.

## Shellfish Tidal Waters Fishing Limits and Management Measures

Dates in this table are inclusive. Check for updates prior to fishing.

The same management measures apply to offshore waters as the corresponding inshore waters (e.g.: limits in Area 23 apply in Area 123) unless otherwise specified. The offshore waters include Areas 101 to 111, 130, 142, 121, and 123 to 127.

Species	Area	Min. Size Limit	Daily Limit	Possession Limit	Open Times	Gear	Management Measures
Abalone	1 to 29	N/A	0	0	Closed	N/A	Closed for conservation purposes.
Barnacles, Giant	1 to 29	N/A	6	12	Jan 1-Dec 31	Hand picking	
Barnacles, Goose	1 to 29	N/A	2kg	4kg	Jan 1-Dec 31	Hand picking	
Clams	1 to 11	N/A	0	0	Closed	N/A	Closed due to paralytic shellfish poisoning (PSP) concerns.
Clam, Razor	Subarea 1-5	N/A	50	100	Jan 1-Dec 31	Hand digging	Waters of McIntyre Bay on Queen Charlotte Islands.
	12 to 29	N/A	12	24	Jan 1-Dec 31	Hand digging	
Clam, Butter	12 to 29	N/A	25	50	Jan 1-Dec 31	Hand digging	Lower Mainland is closed to clam harvest. Check for closures due to PSP. Clam harvesters are encouraged to fill in holes to reduce predation on exposed juvenile clams.
Clam, Horse	12 to 29	N/A	6	12	Jan 1-Dec 31	Hand digging & picking	
Clam, Littleneck	12 to 29	N/A	75	150	Jan 1-Dec 31	Hand digging	There is an aggregate daily limit for all clam species of 75; the aggregate possession limit is 150.
Clam, Manila	12 to 29	N/A	75	150	Jan 1-Dec 31	Hand digging	
Clams Softshell	12 to 29	N/A	25	50	Jan 1-Dec 31	Hand digging	<b>Pacific Rim National Park aggregate daily limit:</b> 8 razors, 3 geoducks, 12 horse clams, 24 littleneck or manila clams, and 0 butter clams. Maximum aggregate of all clam species is 24.
Clams, Varnish	12 to 29	N/A	75	150	Jan 1-Dec 31	Hand picking	
Cockles	12 to 29	N/A	25	50	Jan 1-Dec 31	Hand digging & picking	
Crab, Alaska King	1 to 10, 21 to 27	N/A	2	4	Jan 1-Dec 31	Maximum of 2 ring nets, dip nets or traps or combination of these per fisher.	Closed for conservation purposes.
	11 to 20, 28, 29	N/A	0	0	Closed		
Crab, Box and Puget Sound King	1 to 29	N/A	1	2	Jan 1-Dec 31	Hand picking is permitted while diving.	Aggregate daily limit of Dungeness, Red Rock, Alaska King in Areas 1 to 10, 21 to 27 is 6; in Areas 11 to 20, 28 and 29, it is 4.
Crab, Dungeness	1 to 10, 21 to 27	165mm	6	12	Jan 1-Dec 31		
	11 to 20, 28, 29	165mm	4	8	Jan 1-Dec 31		
Crab, Red Rock	1 to 10, 21 to 27	115mm	6	12	Jan 1-Dec 31	No sharp-pointed instruments are permitted for harvesting crab.	<b>It is prohibited to possess female crabs.</b> In Areas 28 and 29, <b>the daily limit for shore crabs is 0.</b> The non-retention is due to concerns about stocks adjacent to highly populated areas.
	11 to 20, 28, 29	115mm	4	8	Jan 1-Dec 31		
Crab, Shore	1 to 27	N/A	75	150	Jan 1-Dec 31	No sharp-pointed instruments are permitted for harvesting crab.	In Area 16 east of a line between Henry Point and Francis Peninsula and in Area 18 in Fulford Harbour, inside a line from Eleanor Point to Isabella Point, it is <b>prohibited to use any gear other than ring nets or dip nets in Pender Harbour.</b>
	28 and 29	N/A	0	0	Closed		
Crab, Other	1 to 29	N/A	4	8	Jan 1-Dec 31		

Species	Area	Min. Size Limit	Daily Limit	Possession Limit	Open Times	Gear	Management Measures
Geoduck	1 to 11	N/A	0	0	Closed	N/A	Closed due to PSP concerns. Contact a local DFO office for details.
	12 to 29	N/A	3	6	Jan 1-Dec 31	Hand digging & picking	
Limpet/Whelk	1 to 29	N/A	75	150	Jan 1-Dec 31	Hand picking	
Mussel, Blue	1 to 11	N/A	0	0	Closed	N/A	Closed due to PSP concerns. Contact a local DFO office for details.
	12 to 29	N/A	75	150	Jan 1-Dec 31	Hand picking	<b>Pacific Rim National Park daily limit:</b> 12. Combined aggregate daily limit of all mussel species is 75.
Mussel, California	1 to 11	N/A	0	0	Closed	N/A	Closed due to PSP concerns. Contact a local DFO office for details.
	12 to 29	N/A	25	50	Jan 1-Dec 31	Hand picking	<b>Pacific Rim National Park daily limit:</b> 12. Combined aggregate daily limit of all mussel species is 75.
Octopus	1 to 29	N/A	1	2	Jan 1-Dec 31		The use of sharp pointed instruments and chemicals is prohibited.
Oyster, Olympia	1 to 29	N/A	0	0	Closed	N/A	To avoid inadvertently harvesting Olympia Oysters while you are harvesting Pacific Oysters, do not harvest any oyster less than 5 cm in diameter.
Oyster, Pacific	1 to 11	N/A	0	0	Closed	N/A	Closed due to PSP concerns. Contact a local DFO office for details.
	12 to 29	N/A	15	30	Jan 1-Dec 31	Hand picking	Daily limit for oysters can be either shelled or shucked (unshelled), but not both. Lower Mainland area is closed to oyster harvest. Harvesters are encouraged to shuck oysters on the beach and leave the shells there, or return oyster shells to the beach from where you collected them whenever possible. You will need permission to harvest oysters from marked oyster farms.
Scallop, Pink and Spiny	1 to 11	N/A	0	0	Closed	N/A	Closed due to PSP concerns. Contact a local DFO office for details.
	12 to 29	N/A	75	150	Jan 1-Dec 31	Hand picking	




Species	Area	Min. Size Limit	Daily Limit	Possession Limit	Open Times	Gear	Management Measures
Scallop, Rock	1 to 11	N/A	0	0	Closed	N/A	Closed due to PSP concerns. Contact a local DFO office for details.
	12 to 29	N/A	6	12	Jan 1-Dec 31	Hand picking	
Scallop, Weathervane	1 to 11	N/A	0	0	Closed	N/A	Closed due to PSP concerns. Contact a local DFO office for details.
	Subarea 1-5	N/A	100	200	Jan 1-Dec 31	Hand picking	Water of McIntyre Bay, Queen Charlotte Islands.
	12 to 29	N/A	6	12	Jan 1-Dec 31	Hand picking	
Sea Cucumber	1 to 29	N/A	12	24	Jan 1-Dec 31	Hand picking	
Sea Urchin	1 to 29	N/A	12	24	Jan 1-Dec 31	Hand picking	
Shrimp/Prawn	1 to 29	N/A	200	400	Jan 1-Dec 31	Spear, ring net, trap Maximum of 4 traps or ring nets or combination of these per fisher.	Spear by dive only. The release of prawns carrying eggs is encouraged for conservation.
Shrimp, Ghost	1 to 29	N/A	50	100	Jan 1-Dec 31	Hand digging, hand pump	Species is also known as sand shrimp.
Sand Dollar	1 to 29	N/A	6	12	Jan 1-Dec 31	Hand picking	
Sea Star	1 to 29	N/A	6	12	Jan 1-Dec 31	Hand picking	
Snail, Moon	1 to 29	N/A	2	4	Jan 1-Dec 31	Hand picking	Moon snails may be subject to PSP, check for closures.
Squid, Opal	1 to 29	N/A	200	400	Jan 1-Dec 31	Cast net, jigging	
Squid, all other species	1 to 29	N/A	20	40	Jan 1-Dec 31	Cast net, jigging	This includes Humbolt Squid and Neon Flying Squid in the aggregate.
Other species	1 to 29	N/A	20	40	Jan 1-Dec 31	Various	The daily limit is per species.
IN-SEASON MANAGEMENT MEASURES							
Area	Management Measure						
Area 12	Nimpkish Estuary Special Management Area: From June 15 to September 14, the daily limit for all crab species (other than King or Box crab) is reduced to two in Subarea 12-19: those waters at the mouth of the Nimpkish River that lie inside a line that begins at a boundary sign approx. 1.5 km easterly of Broad Pt, then continues to navigation aid N17, then to a boundary sign located approximately easterly of Willow Creek then following the shoreline of Vancouver Island to the beginning point. Only dip nets, ring nets or hand picking is permitted to harvest crab in this area at this time.						
Area 19	Sidney/Cordova Channel Advisory: Use 27 cm diameter (or larger) brightly coloured buoys in Sidney and Cordova Channels, an area bounded on the south by a line from Cowichan Head to D'Arcy Shoals to the southernmost point of Sidney Island. The northern boundary extends from a point on the Saanich Peninsula shoreline due east to the light on the north end of James Island, east to northeasterly to the light on the U2 navigation buoy in Sidney Channel, then true east to Sidney Island. Larger buoys are being tested by both commercial and recreational crab fishers in these channels to improve visibility. Larger buoys may be required in all trap fisheries in the future.						

CRAB HEPATOPANCREAS CONSUMPTION ADVISORIES		
Area	Location	Quantity
Area 13	Discovery Passage and waters of Deepwater Bay.	Not to exceed 100g per week.
	In the area bounded by the eastern shore of Quadra Island from Francisco Point, thence 5 km north along the shore, thence east from the shoreline to the 200 m contour.	Zero consumption
	In the waters east of a line on Quadra Island from Chonat Point south to the opposite bay (Chonat Bay) and from Kanish Bay, Quadra Island, east of a line from Granite Point to Bodega Point.	Not to exceed 135g per week.
	In the waters north of a line extending from Walters Point on Sonora Island true east to a point on the opposite shore (Owen Bay).	Not to exceed 13g per week.
Area 17	In a portion of Stuart Channel bounded on the north by a line from Donckele Point on Kuper Island to the point at the southeastern entrance to Preedy Harbour on Thetis Island, thence to the most southern point of Dayman Island, thence to the most southern point of Scott Island, westerly to Sharpe Point on Vancouver Island, thence southwesterly across Ladysmith Harbour to a point on the shore 230° true from Sharpe Point; thence southerly along the shore of Vancouver Island to Grave Point; thence north of a line to Erskine Point on Saltspring Island; thence northerly along the shore to Parminter Point, thence west of a line to Josling Point on Kuper Island, thence northerly along the shore to the point of commencement at Donckele Point.	Not to exceed 40g per week
	In the waters west of a line from Reynolds Point to Miami Islet to a point at the entrance to Kulleet Bay true south of Deer Point.	Not to exceed 105g per week.
Area 18	Burgoyne Bay, Saltspring Island.	Not to exceed 60g per week.
	Maple Bay, Vancouver Island.	Not to exceed 125g per week.
Area 19	In those waters of Victoria Harbour north of a line from Macaulay Point to the navigation light at the western end of the Ogden Point breakwater to a line from Chapman Point southwesterly to the opposite shore.	Not to exceed 135g per week.
Area 25	In those waters of Muchalat Inlet lying east of the Gold River Harbour limit, and in those waters of Muchalat Inlet lying east of a line between Anderson Point and Atrevida Point.	Not to exceed 70g per week.
Area 28	In the waters of Thornbrough Channel, bounded on the north by a line from McNab Point on the mainland southwest to Ekins Point on Gambier Island, and on the south by a line from a line from Gower Point to the southern tip of Home Island, thence north to Keats Island and along the western and northern shore to Cotton Point, thence west of a line to the government wharf at Gambier Harbour on Gambier Island.	Not to exceed 55g per week.
	In the waters south of a line from Brunswick Point west to Irby Point on Anvil Island and along the shoreline to Dornett Point on Anvil Island, west to McNab Point on the mainland, to Ekins Point on Gambier Island, to a line from Reception Point to a point 1.5 km true south of Cape Roger Curtis on Bowen Island, west to Point Atkinson. This advisory does not include the western portion of Howe Sound.	Not to exceed 130g per week.

# Closures

The closures listed on the following pages are arranged by Area. To determine the location you will be fishing in, check the fold-out maps on the inside front cover of this Guide. Then turn to the corresponding Area in this section.

**Expect in-season changes to the information in this Guide.  
Check for the latest closure information prior to fishing.  
Call 1-866-431-3474 (or in Greater Vancouver 604-666-2828)  
or visit the DFO website:  [www.pac.dfo-mpo.gc.ca/recfish](http://www.pac.dfo-mpo.gc.ca/recfish)**

## Permanent Bivalve Shellfish Harvesting Prohibited Zones

No harvesting is permitted:


- within 300 m of industrial, municipal and sewage treatment plant outfall discharges;
- within a minimum 125 m of marinas, wharves, finfish net pens, float homes or other floating living accommodation facilities, including live aboard boats.

## Rockfish Conservation Areas (RCAs)

RCAs have been designed to protect inshore rockfish and lingcod by eliminating mortality from fishing activity. RCAs are part of a larger strategy that is designed to halt declines and allow inshore rockfish and lingcod stocks an opportunity to rebuild.

The ONLY permitted sport fishing activities in RCAs include:

- invertebrates by hand picking or dive,
- crab and shrimp (including prawns) by trap, and
- smelt by gillnet.

**There are currently 164 RCAs coastwide.  
Details of RCAs are not available in this Guide.  
Maps and descriptions of RCAs are available on CD by calling  
604-666-0384 or at the DFO website:  [www.pac.dfo-mpo.gc.ca/recfish/Restricted\\_Areas/rca\\_e.htm](http://www.pac.dfo-mpo.gc.ca/recfish/Restricted_Areas/rca_e.htm)**

## Closures by Area

---

### Areas 1, 101 and 142

#### All Finfish, including Salmon:

In the tidal portions of all streams, **only a single, barbless hook** may be used.

#### Shellfish Contamination:

With the exception of McIntyre Bay (Subarea 1-5), closed to the harvest of bivalve shellfish.

#### Rockfish Conservation Area:

Fredrick Island.

---

### Areas 2 and 102

#### All Finfish, including Salmon:

In the tidal portions of all streams, **only a single, barbless hook may be used.**

The waters of Cumshewa Inlet east of a line from a boundary sign on McLeallan Island to another boundary sign 3.5km east of Mathers Creek, and west of a line from a boundary sign on McLellan Island to a boundary sign 3.5km east of Mathers Creek, are **closed to fishing for all finfish August 15 to October 31.**

#### Shellfish Contamination:

Closed to the harvest of all bivalve shellfish.

#### Rockfish Conservation Areas:

Lyell Island and South Moresby.

---

### Areas 3 and 103

#### Shellfish Contamination:

Closed to the harvest of all bivalve shellfish.

---

### Areas 4 and 104

#### All Finfish, including Salmon:

The waters downstream of the tidal boundary sign at the water line crossing on “Shawatlan” Creek to the fishing boundary signs at the mouth of Shawatlan Bay, are **closed to fishing for all finfish July 15 to August 15.**

The waters from the fishing boundary sign at the mouth of “Kloiya” Creek to the fishing boundary sign at the mouth of Kloiya Bay, are **closed to fishing for all finfish August 1 to September 1.**

### **Shellfish:**

The harvesting of **crab** is prohibited in those waters of Porpoise Harbour and Wainwright Basin (Subarea 4-11) inside a line from the southernmost point of Kaien Island to the northwesternmost point of Ridley Island, thence southerly along the eastern shoreline to southernmost point of Ridley Island, thence to the westernmost point of Lelu Island, thence northerly along the shoreline to the northernmost point of Lelu Island, thence to a marker on the shore of Tsimpsean Peninsula opposite, and bounded on the north by the Hwy 16 Bridge at Galloway Rapids.

### **Shellfish Contamination:**

Closed to the harvest of all bivalve shellfish.

### **Rockfish Conservation Areas:**

Dunira; Hodgson Reefs; North and South Gull Rocks; Stephens Island; and Porcher Peninsula.

---

## **Areas 5 and 105**

### **All Finfish, including Salmon:**

Inside a line drawn from fishing boundary signs located approx. 100 m seaward of the falls at the mouth of the Kumowdah River flowing into Lowe Inlet, is **closed to fishing for all finfish July 1 to October 31**.

### **Shellfish Contamination:**

Closed to the harvest of all bivalve shellfish.

### **Rockfish Conservation Areas:**

Porcher Peninsula; Goschen; West Banks Island; and North Danger Rocks.

---

## **Areas 6 and 106**

### **Shellfish:**

Closed to the harvest of all bivalve shellfish.

### **Rockfish Conservation Areas:**

Otter Passage; West Aristazabal Island; and Kitasu Bay.

---

## **Areas 7 and 107**

### **All Finfish, including Salmon:**

The waters of McLaughlin Bay shoreward of a line connecting two fishing boundary signs on each side of the entrance to McLaughlin Bay is **closed to fishing for all finfish from July 1 to October 31**.

### **Shellfish Contamination:**

Closed to the harvest of all bivalve shellfish.

### **Rockfish Conservation Areas:**

Goose Island and McMullin Group.

---

## Areas 8 and 108

### All Finfish, including Salmon:

The mouth of Namu River shoreward of a line between two fishing boundary signs located 180 m from a bridge at the mouth of Namu Creek on the west shore and a point on the opposite side of the bay, is **closed to fishing for all finfish, all year**.

### Shellfish Contamination:

Closed to the harvest of all bivalve shellfish.

### Rockfish Conservation Area:

West Calvert.

---

## Areas 9 and 109

### All Finfish, including Salmon:

Shoreward of a line connecting two square white boundary signs off the mouth of the Wannock River is **closed to fishing for all finfish June 1 to September 15**.

Shoreward of a line connecting two square boundary signs off the mouth of the Chuckwalla and Kilbella rivers is **closed to fishing for all finfish June 1 to September 15**.

### Shellfish Contamination:

Closed to the harvest of all bivalve shellfish.

### Rockfish Conservation Area:

Fish Egg Inlet.

---

## Areas 10 and 110

### Shellfish Contamination:

Closed to the harvest of all bivalve shellfish.

### Rockfish Conservation Area:

Smith Sound.

---

## Areas 11 and 111

### Shellfish Contamination:

Closed to the harvest of all bivalve shellfish.

### Rockfish Conservation Areas:

Storm Islands and Scott Islands.

---

## Area 12

### All Finfish, including Salmon:

Those waters of Port McNeill Bay westerly of a line from a boundary sign at the north end of the Western Forest Products jetty, true north to a boundary sign on the opposite shore of Ledge Point Peninsula, are **closed to fishing for all finfish from August 15 to December 31**.

The mouth of the Klinaklini River (Knight Inlet) shoreward of a line from a fishing boundary signs at the southern entrance to Wahshihlas Bay to a fishing boundary sign at Rubble Point is **closed to fishing for all finfish, all year**.

The mouth of Scott Cove Creek and Viner Sound shoreward of a line between fishing boundary signs located at King Point and on the point 1 km south from the mouth of Scott Cove Creek is **closed to fishing for all finfish August 15 to September 30**.

The mouth of the Kingcome River shoreward of a line from a fishing boundary signs on Petley Point to a fishing boundary sign on a point on the opposite shore of Kingcome Inlet is **closed to fishing for all finfish, all year**.

The mouth of the Wakeman River north of a line connecting two fishing boundary signs on opposite shores approx. 6 km from the head of Wakeman Sound is **closed to fishing for all finfish, all year**.

The mouth of Nimpkish River inside a line from a fishing boundary sign at a point on the shore of Vancouver Island approximately 1.5 km east of Broad Point, then to a navigational aid in the middle of Haddington Passage, then to a fishing boundary sign at a point approximately 1 km east of Willow Creek, then to the tidal water boundary signs approximately 100 m upstream of the Highway 19 bridge is **closed to fishing for all finfish June 1 to December 31**.

Parson Bay bounded inside a line from Red Point on Harbledown Island to a marker on the most northwest point of Parson Island, then following the northern shore to the most easterly point and then true east to Harbledown Island is **closed to fishing for all finfish June 15 to September 30**.

### Shellfish Contamination:

Hardy Bay; Echo Bay; Beaver Harbour; Port Neville; Hopetown Passage; Macgowan Bay; bay west of Everard Islets; Shoal Harbour; Little Nimmo Bay; Southeast Turnour Island; Sutherland Bay; Double Bay; Alert Bay; north side of Cormorant Island; Clam Cove; Laura Bay; Burly Bay; Dickson Island; Shushartie Bay; Helen Bay; and Joe Cove Bay.

**May 31 to September 30:** Cutter Cove.

### Rockfish Conservation Areas:

Bate-Shadwell Passage; Goletas Channel; Browning Passage-Hunt Rock; Bolivar Passage; Shelter Bay; Browning Islands to Raynor Group; Drury Inlet-Muirhead Islands; Hardy Bay-Five Fathom Rock; Numas Islands; Suquash; Haddington Passage; Burley Bay-Nepah Lagoon; Mackenzie-Nimmo; Wakeman Sound; Dickson Polkinghorne Islands; Nowell Channel; Greenway

Sound; Belleisle Sound; Kwatsi Bay; Bond Sound; Thompson Sound; Salmon Channel; Weynton Passage; Eden–Bonwick–Midsummer–Swanson Islands; Port Elizabeth; Lower Clio Channel; Viscount Island; Havannah Channel; Upper Call Inlet; Cracroft Point South–Sophia Islands; and West Cracroft–Boat Bay.

---

## Area 13

### All Species:

These waters are **closed to the harvest of all marine life by divers** for the preservation of unique underwater habitat: Discovery Passage, in the Campbell River area, bounded by a straight line from North Bluff on Quadra Island, across Seymour Narrows to a fishing boundary sign on Vancouver Island, and south by a line from the light on the end of the south Government Dock breakwater at Campbell River to Cape Mudge lighthouse.

### All Finfish, including Salmon:

The waters in Loughborough Inlet from Cosby Point to head of inlet are **closed to fishing for all finfish, all year**.

The waters of Phillips Arm northerly of a line from Picton Point true east to the opposite shore are **closed to fishing for all finfish, all year**.

The waters of Village Bay inside a line from a fishing boundary sign at the north entrance of Village Bay, Quadra Island, to a boundary sign at the south entrance of Village Bay are **closed to fishing for all finfish June 30 to October 31**.

Those waters of Discovery Passage and the Campbell River inside a line true east of the fishing boundary sign at Orange Point to the middle of the channel, then southeasterly down the middle of the channel to the intersection of a line running from a boundary sign on the southern end of Hidden Harbour breakwater, then true east to Quadra Island, is **closed to fishing for all finfish October 1 to October 31**, except for the Campbell River Discovery Pier. The area around the Discovery Pier will remain open inside a line running true east 50 m into Discovery Passage at the north end of the pier, then southeasterly down the Discovery Passage to the intersection of a line running true east 50 m at the south end of the Discovery Pier.

The waters of Salmon Bay, bounded on the north by a line from Graveyard Point to the ferry landing on the opposite shore, and on the south by the downstream side of the first bridge upstream on the Salmon River are **closed to fishing for all finfish June 1 to December 1**.

### Shellfish:

The waters within 0.5 nautical miles of Mitlenatch Island are closed to harvesting **clams and oysters**, all year.

The waters of Discovery Passage and the Campbell River bounded by a line east of Orange Point to the middle of the channel then southeast to the intersection of a line east to a marker on Tyee Spit, are closed to **crab** harvesting all year.



### Shellfish Contamination:

Quathiaski Cove; Heriot Bay; Campbell River; Big Bay; Kelsey Bay; Salmon Bay; Grassy Creek; Forward Harbour; Whaletown Bay; Coulter Bay; Phillips Arm; Marina Reef; Gray Creek; Bessborough Bay; Jackson Bay; Topaze Harbour Head; Hjorth Bay; Graite Bay; and an unnamed cove in eastern Gorge Harbour.

**May 31 to September 30:** Mansons Landing; Von Donop Inlet; and Drew Harbour.

### Rockfish Conservation Areas:

Wellborne; Forward Harbour; Loughborough Inlet; Bute Inlet North; Chancellor Channel West; Chancellor Channel East; Walkem Islands to Hemming Bay; Thurston Bay; Kanish Bay; Octopus Islands to Hoskyn Channel; Read–Cortes Islands; Deepwater Bay; Menzies Bay; Maud Island; and Heriot Bay.

---

## Area 14

### All Species:

These waters are **closed to the harvest of all marine life by divers** for the preservation of unique underwater habitat: the southeasterly shoreline of Hornby Island, from Shingle Spit southerly through Norman Point, Downes Point, Tribune Bay and St. John Point to Cape Gurney, including Heron Rocks, Norris Rocks and Flora Islet.

### All Finfish, including Salmon:

Comox Harbour inside a line from a fishing boundary sign near Trent River to a light at the tip of Goose Spit is **closed to fishing for all finfish May 1 to August 31**, except the shallow shore line defined as the waters inside and shoreward of the 2 m depth contour measured below the chart datum (0 tide), which is **open for fishing for all finfish except chinook**.

The tidal waters within a 75 m radius of the mouth of the Trent River, the mouth of Hart (Washer) Creek and the mouth of Mallard Creek are **closed to fishing for all finfish September 1 to November 30**.

### Shellfish:

The waters within 0.5 nautical miles of Mitlenatch Island, are closed to harvesting **clams and oysters**, all year.

### Shellfish Contamination:

Campbell River; Comox Harbour; Deep Bay; Union Bay; Base Flats; Qualicum Beach; Kye Bay; Elma Bay; Wall Beach; Parksville Bay; Mud Bay; Boat Cove; Little Qualicum River; False Bay; Craig Creek; and Kitty Coleman Beach to Little River.

**Baynes Sound Management Plan Closures:** this area closes when rainfall in the area exceeds 35 mm over a 24 hour period.

### Rockfish Conservation Areas:

Mitlenatch Island; Oyster Bay; Ajax–Achilles Bank; Baynes Sound; Savoie Rocks–Maude Reef; Chrome Island; Sisters Islets; and Lasqueti Island South.

---

## Area 15

### All Species:

These waters are **closed to the harvest of all marine life** by divers for the preservation of unique underwater habitat: within 0.8 km of Vivian Island, approx. 8 km west of Powell River. All waters within 0.5 km of Rebecca Rock, west of Powell River. All waters within 0.5 km of Dinner Rock, just south of Lund. All waters adjacent to the unnamed reef off Emmonds Beach, approx. 6 km south of Lund. All waters within 1.3 km of Mitlenatch Island, in the upper Strait of Georgia. All waters within a 0.5 km radius of the southerly end of the Beach Garden Breakwater.

### Shellfish:

The waters within 0.5 nautical miles of Mitlenatch Island are closed to harvesting **clams and oysters**, all year.

### Shellfish Contamination:

Scuttle Bay to Albion Point; Freke Anchorage; Lund Harbour; East Refuge Cove; Lang Bay; Bliss Landing; McRae Cove; Sturt Bay; Frolander Bay; Northwest Refuge Cove; Theodosia Inlet; Grace Harbour; Squirrel Cove; and Cranberry Creek.

**May 31 to September 30:** Prideaux Haven; Tenedos Bay; Allies Island; Roscoe Bay; Squirrel Cove; Cortes Bay; Grace Harbour; and Mink Island.

### Rockfish Conservation Areas:

Mitlenatch Island; Pendrell Sound; Teakerne Arm; Desolation Sound; Copeland Islands; and Dinner Rock.

---

## Area 16

### All Finfish, including Salmon:

The waters at the mouth of Sakinaw Creek, east of a line between boundary signs on the north and south sides of Sakinaw Bay, are **closed to fishing for all finfish June 15 to September 15**.

### Shellfish:

When harvesting **crab**, it is prohibited to use any gear other than ring nets or dip nets in Pender Harbour, east of a line between Henry Point and Francis Peninsula.

The waters of Gunboat Bay inside a line from the B.C. Hydro lines at the entrance to Gunboat Bay, are closed to harvesting **crab, all year**.

### Shellfish Contamination:

Pender Harbour; Secret Cove; Gillies Bay; Thunder Bay; Churchill Bay; Porpoise Bay; Vancouver Bay; Halfmoon Bay; Long Bay; Blind Bay; unnamed bay east of Four Mile Point; Silversands Creek; Saltery Bay; Long Bay; Home Bay; Skwawka River; unnamed bay in Skookumchuck Narrows; North Nelson Island; Lena Bay; Squitty Bay; and Poise Island.

**May 31 to September 30:** Smuggler Cove; Princess Louisa Inlet; and Buccaneer Bay.

### **Rockfish Conservation Areas:**

Queens Reach East; Princess Louisa Inlet; Queens Reach West; Hotham Sound; Sinclair Bank; Hardy Island; Nelson Island; Skookumchuck Narrows; Salmon Inlet; Davie Bay; Malaspina Strait; McNaughton Point; Thormanby Island; and Sabine Channel–Jervis–Jedediah Islands.

---

## **Area 17**

### **All Finfish, including Salmon:**

The waters of Northumberland Channel and Nanaimo Harbour from Duke Point to a marker near the entrance to Descanso Bay on Gabriola Island, to Gallows Point on Protection Island, then northwesterly along the shore to the most western point, then true north to Newcastle Island, northwesterly along the shore to Shaft Point, to Pimbury Point on Vancouver Island, southerly along the shore to the Cedar Bridge on the Nanaimo River, across the bridge and northerly along the shore to Jacks Point, following the Vancouver Island shore southerly to the point of commencement at Duke Point, are **closed to fishing for all finfish July 15 to October 25**.

That portion of the Nanaimo River from the Cedar Bridge to the white square boundary signs located approx. 400 m downstream of the Cedar Bridge, are **closed to fishing for all finfish October 31 to November 30**.

The tidal waters of the Chemainus River and off the Chemainus River mouth, commencing at Bare Point on Vancouver Island to the light on North Reef, to Sherard Point on Vancouver Island, thence following the shoreline northerly to a boundary sign on the Chemainus River near the Bald Eagle Campground, thence across the river to the opposite bank, thence following the Vancouver Island shoreline northerly to the point of commencement, are **closed to fishing for all finfish July 15 to October 31**.

### **Shellfish Contamination:**

Ladysmith Harbour; Chemainus Bay to Shoal Islands; Nanaimo Harbour; Departure Bay; Degnen Bay; Silva Bay; Montague Harbour; Shaw Road; Walker Hook; Nanoose Harbour; Clam Bay; Telegraph Harbour; Malaview Estates sewage outfall; Hammond Bay; Taylor Bay; south side of Descanso Bay; Lantzville; Duck Bay; Vesuvius Bay; Booth Bay; Porter Creek; Stuart Channel; unnamed bay northwest of Saltspring Island; Stone Cutters Bay; north side Descanso Bay; Vancouver Island between Icarus Point and Neck Point; unnamed bay on east side of Vancouver Island in Stuart Channel; Winchelsea Islands; Ada Islands; Conover Cove; and Preedy Harbour.

**May 31 to September 30:** Tent Island; Pirates Cove; Conover Cove; cove northwest of Conover Cove; and Montague Harbour.

## Rockfish Conservation Areas:

Lasqueti South–Young Point; Ballenas Island; Nanoose–Schooner Cove; Departure Bay; Northumberland Channel; De Courcy Island North; Reynolds Point–Link Island; Gabriola Passage; Danger Reefs; Ruxton–Pylades Islands; Coffin Point; Thetis–Kuper Islands; Saltspring Island North; and Trincomali Channel.

---

## Area 18

### All Finfish, including Salmon:

Those waters of Cowichan Bay inside a line from a fishing boundary sign near Separation Point on Vancouver Island to Wilcuma Wharf are **closed to fishing for all finfish August 1 to October 31**.

In Subareas 18-7 and 18-8, that portion of Subarea 18-8 that lies easterly of a line from a square white boundary sign at Separation Point to a square white boundary sign at Wilcuma Wharf in Cowichan Bay; and that portion of Subarea 18-7 that lies southerly of a line from a square white boundary sign on Vancouver Island, near 48°46.179'N and 123°34.654'W, to a square white boundary sign on Saltspring Island SE of Burial Islet, near 48°45.992'N and 123°33.777'W, and northerly of a line from a square white boundary sign on Saltspring Island approximately 1.5 nautical miles ESE of Musgrave Point, near 48°43.982'N and 123°31.418'W, to a square white boundary sign on Vancouver Island approximately 0.5 nautical miles NW of Cherry Point, near 48°43.197'N and 123°33.708'W are **closed to fishing for all finfish August 1 to October 15**.

### Shellfish:

When harvesting **crab**, it is prohibited to use any gear other than ring nets or dip nets in Fulford Harbour, inside a line from Eleanor Point to Isabella Point.

There is a restricted fishing area in Ganges Harbour to provide a channel for navigation. **Crab floats** (buoys) must remain outside of the restricted area at all times.

### Shellfish Contamination:

Cowichan Bay; Long Harbour; Fulford Harbour; Ganges Harbour; Thieves Bay to Oak Bluffs; Bedwell Harbour; Hope Bay; Maple Bay; Horton Bay; Village Bay; Annette Inlet; Boot Cove; Northeast Saanich Peninsula; Madrona Bay; unnamed bays east of Fulford Harbour; Selby Cove; Port Browning; James Bay; 1.4km from Walker Spit; Cusheon Creek; Moresby Island; Shark Cove; and Burgoyne Bay.

**May 31 to September 30:** Long Harbour, Reef Harbour and Princess Bay.

### Rockfish Conservation Areas:

Mayne Island North; Prevost Island North; Navy Channel; Bell Chain Islets; Maple Bay; Burgoyne Bay; Russell Island; Portland Island; Bedwell Harbour; South Saturna; Patey Rock; and Coal Island.

---

## Area 19

### All Finfish, including Salmon:

Those waters of Saanich Inlet inside a line from Whiskey Point to Verdier Point are **closed to fishing for all finfish September 15 to November 30**.

Those waters of Haro Strait shoreward of a line from the Sidney to Anacortes ferry dock in Sidney to the most eastern point of Cordova Spit: **non-retention of cutthroat trout, all year**.

Those waters of Finlayson Arm southerly of a line drawn true east from Christmas Point to the opposite shore are **closed to fishing for all finfish September 1 to November 30**.

**Harvesting of lingcod and rockfish is prohibited in these waters:** Those waters shallower than the 40 m depth contour surrounding Great Race Rock, North Race Rock, West Race Rock and Rosedale Rock.

### Shellfish:

Closed to the harvest of **butter clams**, all year.

There is a restricted fishing area in Tsehum Harbour to provide a channel for navigation. **Crab floats** (buoys) must remain outside of the restricted area at all times.

**Harvesting of shellfish is prohibited in these waters:** those waters inside a line from the navigation light at the western end of the Ogden Point Causeway thence to Brotchie Ledge Light, thence to Holland Point on Vancouver Island; those water within 0.5 nautical miles of Great Race Rock; and Ten Mile Point: Those waters within 0.4 nautical miles of Cadboro Point navigation light.

### Shellfish Contamination:

Albert Head to Cordova Bay; Curteis Point to Cordova Bay; Hatch Point to Bamberton; Thompson Cove; Brentwood Bay; Coles Bay; Finlayson Arm; Quarantine Cove; Cordova Split to James Island to Island View Beach; Mosses Point to north of Dogwood Road access; Squally Reach; Bazan Bay; and North Yarrow Point.

### Rockfish Conservation Areas:

Coal Island; Brethour, Domville, Forrest, Gooch Islands; Brentwood Bay; Mid Finlayson Arm; D'Arcy Island to Beaumont Shoal; Duntze Head (Royal Roads); Trial Island; Discovery—Chatham Islands; and Race Rocks.

---

## Area 20

### All species:

**Pacific Rim National Park Reserve:** Portions of Areas 20 to 24, 121, 123 and 124: All tidal waters within the park are closed to **scuba and skin diving for all species, all year**.

### All Finfish, including Salmon:

Those waters that are inside a line that begins at a white square boundary sign located approximately 0.8 nautical miles west of Owen Point, then to

48°32.45'N and 124°32.05'W, then to the Port San Juan Light and Whistle Buoy, then to Woods Nose, then across Port San Juan to a white square boundary sign at 48°33.23'N and 124°28.55'W are **closed to fishing for all finfish August 15 to Labour Day in September.**

#### **Shellfish:**

**Harvesting of all shellfish is prohibited in these waters:** Botanical Beach: Those waters between the lowest tide level and the highest tide level between a fishing boundary sign 1,500 m northeast of San Juan Pt following the shoreline southeasterly to a fishing boundary sign 250 m west of the mouth of Tom Baird Creek.

#### **Shellfish Contamination**

Pedder Bay, Sooke Harbour and Sooke Basin.

#### **Rockfish Conservation Areas:**

Bentinck Island; Race Rocks; Becher Bay East; Carmanah; and Sooke Bay.

---

## **Areas 21, 22, and 121**

#### **All species:**

**Pacific Rim National Park Reserve:** Portions of Areas 20 to 24, 121, 123 and 124: All tidal waters within the park are **closed to scuba and skin diving for all species, all year.**

#### **All Finfish, including Salmon:**

The head of Nitinat Lake and those waters of the tidal portion of Nitinat River, northeasterly of a line between boundary signs on the northeastern and northwestern tips of land at the head of the lake, are **closed to fishing for all finfish August 1 to October 31.**

In those waters northeasterly of a line from Windy Point to a boundary sign on the opposite shore are **closed to fishing for salmon August 1 to October 31.**

The waters of Subareas 121-1 and 121-2 (Swiftsure Bank), inside a line from 48°34.00'N and 125°06.00'W, thence to 48°34.00'N and 124°54.20'W, thence to 48°29.62'N and 124°43.40'W, thence following the International Boundary between Canada and the U.S. to 48°29.55'N and 124°56.20'W, thence in a straight line to the point of commencement, are **closed to fishing for all finfish all year.**

#### **Rockfish Conservation Areas:**

Pachena Point; Dare Point; and Carmanah.

---

## **Areas 23 and 123**

#### **All species:**

**Pacific Rim National Park Reserve:** Portions of Areas 20 to 24, 121, 123 and 124: All tidal waters within the park are **closed to scuba and skin diving for all species all year.**

**Endeavour Hydrothermal Vents - Marine Protected Area:** Check with your local DFO office for permitted fishing activities.

**All Finfish, including Salmon:**

That portion of Subarea 23-1 southerly of square, white fishing boundary sign at the tidal limit of the Somass River near the Paper Mill Dam and northerly of a line between a square, white fishing boundary sign located at Harbour Quay at Port Alberni and a square, white fishing boundary sign on the opposite shore of Alberni Inlet are **closed to all finfish July 24 to September 30.**

Those waters of Alberni Inlet bounded on the north by line drawn 66° true from Hocking Point to a square white fishing boundary sign on the eastern shore of Alberni Inlet, and on the south by a line from a square white fishing boundary sign at Chesnucknuw Creek to a square white fishing boundary sign on the western shore of Alberni Inlet are **closed to all fishing for finfish August 1 to September 30.**

Those portions of Subarea 23-3 bounded on the south by a line from a boundary sign on Vancouver Island just north of Assits Island Light through a boundary marker at Fullerton Point on Tzartus Island, to a boundary sign on Seddall Island south of Ecoole, and on the north by a line from Star Point to a boundary sign at the mouth of Handy Creek are **closed to all fishing for finfish August 1 to September 30.**

Inside a line from a square, white fishing boundary sign at the eastern side of the entrance to Poett Nook to San Jose Islet Light, thence to a square white fishing boundary sign at the southern tip of Congreve Island, thence northeastward to a square white fishing boundary sign on Vancouver Island are **closed to all fishing for finfish August 1 to September 30.**

**Shellfish Contamination:**

Bamfield Inlet; Grappler Inlet; Ucluelet Inlet; Cigarette Cove; River Point; Crawford Creek; Julia Passage; Toquart Bay; the area between Fatty Basin and Useless Inlet; Useless Inlet; and Roquefeuil Bay.

**May 31 to September 30:** Poett Nook and Entrance Inlet.

**Rockfish Conservation Areas:**

Broken Islands Group and Folger Passage.

---

## **Areas 24 and 124**

**All species:**

**Pacific Rim National Park Reserve:** Portions of Areas 20 to 24, 121, 123 and 124: All tidal waters within the park are **closed to scuba and skin diving for all species, all year.**

**All Finfish, including Salmon:**

Kennedy Cove, inside a line between fishing boundary signs on the outer southwest corner and the outer northeast corner of the Cove is **closed to fishing for all finfish, all year.**

### Shellfish Contamination:

Van Nevel Channel; Duffin Passage; Big Whitepine Cove; portion of Warn Bay; Atleo River; Ahousaht Fuel Dock; and Hot Springs Cove.

### Rockfish Conservation Areas:

Estevan Point; Bedwell Sound; Saranac Island; and Vargas Island to Dunlap Island.

---

## Areas 25 and 125

### All Finfish, including Salmon:

Muchalat Inlet east of a line from the Gold River harbour limit is **closed to fishing for all finfish July 15 to October 15**.

Those waters of Kendrick Inlet northwesterly of a line from Boston Point to Salter Point on the southern tip of Strange Island are **closed to fishing for all finfish July 15 to October 15**.

The waters inside a line drawn between square white fishing boundary signs on the opposite sides of the entrance to Nesook bay; and the waters inside a line drawn between square white fishing boundary signs on the opposite sides of the entrance to Head Bay, and the waters inside a line drawn between white fishing boundary signs on the opposite sides of the entrance to Hisnit Inlet are **closed to fishing for all finfish July 15 to October 15**.

Tahsis Inlet bounded on the north by a line from the most northerly point of Strange Island to a boundary sign on the opposite shore of Tahsis Inlet and bounded on the south by a line from Salter Point on the southern tip of Strange Island to Hoiss Point on Vancouver Island is **closed to fishing for all finfish July 15 to October 15**.

Tahsis Inlet north of a line from Mozino Point to a boundary sign on the opposite shore is **closed to fishing for all finfish July 15 to October 15**.

Zeballos Inlet north of a line commencing at a boundary sign located 49°56.689'N and 126°49.121'W to a boundary sign located at 49°56.689'N to 126°48.006'W (approx. 1 km south of the Little Zeballos River) is **closed to fishing for all finfish July 15 to October 15**.

### Shellfish Contamination:

Friendly Cove; Tlupana Inlet; Inner Basin; Port Eliza; Three Cove Bay; Kleeptee Creek; unnamed creek mouth at Hanna Channel; Nesook Bay; Bodega Island; Queen Cove; Plumper Harbour; Mooyah Bay; Ceepeecee; Esperanza; and Espinosa Inlet.

**May 31 to September 30:** Santa Gertudis Cove.

### Rockfish Conservation Area:

West of Bajo Reef.



---

## Areas 26 and 126

### Shellfish Contamination:

McKay Cove; Walters Cove; Malksope Inlet; Ououkinsh Inlet; Cachalot Inlet; Nasparti Inlet; unnamed creek on Union Island; Amai Inlet; Clanninick Cove; Tahsish Inlet; and Kashutl Inlet.

### Rockfish Conservation Area:

Checleset Bay.

---

## Areas 27 and 127

### All Finfish, including Salmon:

The portion of Varney Bay from the Marble River tidal boundary downstream to the fishing boundary signs at the entrance of Varney Bay is **closed to fishing for all finfish July 1 to December 31**.

### Shellfish Contamination:

Cleagh Creek; Mahatta River; Koprino Harbour; Winter Harbour; Holberg Inlet; Hecate Cove; Apple Bay; and Jules Bay.

### Rockfish Conservation Areas:

Scott Islands; Top Knot; Holberg Inlet; and Brooks Bay.

---

## Area 28

### All Species:

For navigational safety, the Vancouver Port Authority has **prohibited fishing from vessels** between a line drawn true south from Capilano Light to the shoreline and a line drawn true north from Brockton Point to the shoreline.

The following park areas are closed to the harvest of all marine life for the preservation of the unique underwater habitat. **Closures apply to all fishing of all marine life, all year:**

**Porteau Cove** — Those waters east of a line drawn from a fishing boundary sign at the south shore of Porteau Cove northerly in a straight line to the white fishing boundary sign on the north shore of Porteau Cove.

**Point Atkinson** — bounded by a line commencing at the southwest entrance to Starboat Cove, thence seaward in a southwest direction for 85 m, thence westerly following the shoreline for 100 m, thence to the southernmost tip of Point Atkinson (125 m east of the lighthouse).

**Whytecliff Park** — Those waters inside a line that begins at the most southerly point of Whytecliff Park, then in a straight line to a point located 100 m east of the most southeasterly point of Whyte Islet, then following the southern shoreline of Whyte Islet at a distance of 100 m to a point lying 100 m from the most southwesterly point of Whyte Islet, then in a straight line to a point lying 100 m west of White Cliff Point, then following the shoreline at a distance of 100 m in a northerly direction to a point 100 m north of Lookout Point, then following the shoreline at a distance of 100 m in an

easterly direction to a point 100 m perpendicular to the most northerly point of Whytecliff Park, then to the most northern point of Whytecliff Park on the mainland.

### **All Finfish, including Salmon:**

Those waters of Mannion Bay (Deep Bay) on Bowen Island lying westerly of a line between two boundary signs near the entrance to Mannion Bay, are **closed to fishing for all finfish September 1 to December 31.**

Those waters of Howe Sound easterly of a line between a boundary sign 300 m north of the mouth of Britannia Creek and the southern tip of Minaty Bay, are **closed to fishing for all finfish May 30 to September 30.**

### **Shellfish:**

Subareas 28-6 to 28-14 (Burrard Inlet and Indian Arm) are **closed to the harvest of bivalve molluscs, all year.**

Harvesting of **crab, shrimp and prawns** is closed between Lions Gate Bridge and the Second Narrows Bridge, all year. This closure is to avoid conflicts with navigational activity in the harbour.

Harvesting of **crab** is closed in English Bay and False Creek in outer Burrard Inlet, inside a line from a fishing boundary sign on Jericho Beach to Ferguson Point in Stanley Park, **all year.**

### **Shellfish Contamination:**

Burrard Inlet; Indian Arm; Vancouver Harbour; Horseshoe Bay; Gower Point to Soames Point; Port Graves; Camp Fircom; Halkett Bay; McNab Creek; Potlatch Creek; Mannion Bay (Deep Bay); and Grafton Bay.

**May 31 to September 30:** Plumper Cove.

### **Rockfish Conservation Areas:**

Domett Point; Woolridge Island; Pam Rock; Mariners Rest; West Bay; Upper Centre Bay; Lions Bay; Bowyer Island; Pasley Island; Passage Island; West Vancouver; Eastern Burrard Inlet; Indian Arm – Twin Islands; and Croker Island.

---

## **Area 29**

*Refer to the map and description of Fraser River tidal boundaries inside the Tidal Waters cover of this Guide.*

### **Shellfish:**

Subareas 29-6 to 29-11 (Boundary Bay and the mouth of the Fraser River) are **closed to the harvest of bivalve molluscs, all year.**

### **Shellfish Contamination:**

Chaster Creek to Gower Point; Boundary, Mud and Semiahmoo Bays; Sand Heads to U.S. Boundary by Tsawwassen; Sergeant Bay; and Whaler Bay.

### **Rockfish Conservation Areas:**

McCall Bank; Halibut Bank; Valdes Island East; Galiano Island North.