

TABLE 29:
MATURE CHICKEN SLAUGHTERED IN REGISTERED STATIONS
NUMBERS AND EVISCERATED WEIGHT EQUIVALENT

MATURE CHICKEN - POULETS ADULTES

TABLEAU 29:
POULETS ADULTES ABATTUS AUX POSTES ENREGISTRÉS
NOMBRE ET ÉQUIVALENT EN POIDS ÉVISCÉRÉ

	CANNERS - CONSERVERIE		OTHERS - AUTRES		TOTAL		
	Head - Têtes	Kg.	Head - Têtes	Kg.	Head - Têtes	Kg.	
1975					14,302,680	18,695,162	1975
1976	12,921,623	15,122,516	1,795,776	4,224,340	14,717,399	19,346,855	1976
1977	14,053,842	16,147,942	1,527,181	3,856,657	15,581,023	20,004,599	1977
1978	13,578,665	15,561,919	1,549,805	3,916,896	15,128,470	19,478,815	1978
1979	12,863,739	14,358,485	1,893,209	4,763,215	14,756,948	19,121,700	1979
1980	13,312,805	14,677,257	2,200,023	5,674,963	15,512,828	20,352,220	1980
1981	15,492,628	17,151,068	2,583,961	6,810,274	18,076,589	23,961,342	1981
1982	16,329,779	18,048,834	2,730,231	7,330,784	19,060,010	25,379,618	1982
1983	17,793,546	20,656,997	2,917,264	7,735,378	20,710,810	28,392,375	1983
1984	17,788,228	19,685,266	2,188,369	5,954,012	19,976,597	25,639,278	1984
1985	17,547,319	19,461,651	2,407,520	6,581,525	19,954,839	26,043,176	1985
1986	17,369,222	19,582,404	2,520,499	6,956,957	19,889,721	26,539,361	1986
1987	17,894,208	19,902,350	2,909,503	8,109,459	20,803,711	28,011,809	1987
1988	19,240,438	21,213,417	3,119,622	8,666,463	22,360,060	29,879,880	1988
1989	18,190,643	19,968,452	3,168,638	8,862,095	21,359,281	28,830,547	1989
1990	21,624,045	23,796,226	3,806,147	10,596,818	25,430,192	34,393,044	1990
1991	23,193,815	25,127,741	4,661,993	13,002,282	27,855,808	38,130,023	1991
1992	25,451,351	27,531,249	5,877,561	16,104,338	31,328,912	43,635,587	1992
1993	23,846,726	25,677,006	4,720,122	12,973,134	28,566,848	38,650,140	1993
1994	25,581,326	27,308,226	4,186,517	11,575,283	29,767,843	38,883,509	1994
1995	27,792,908	29,052,283	3,942,411	10,958,145	31,735,319	40,010,428	1995
1996	31,977,079	32,987,070	3,958,959	10,816,318	35,936,038	43,803,388	1996

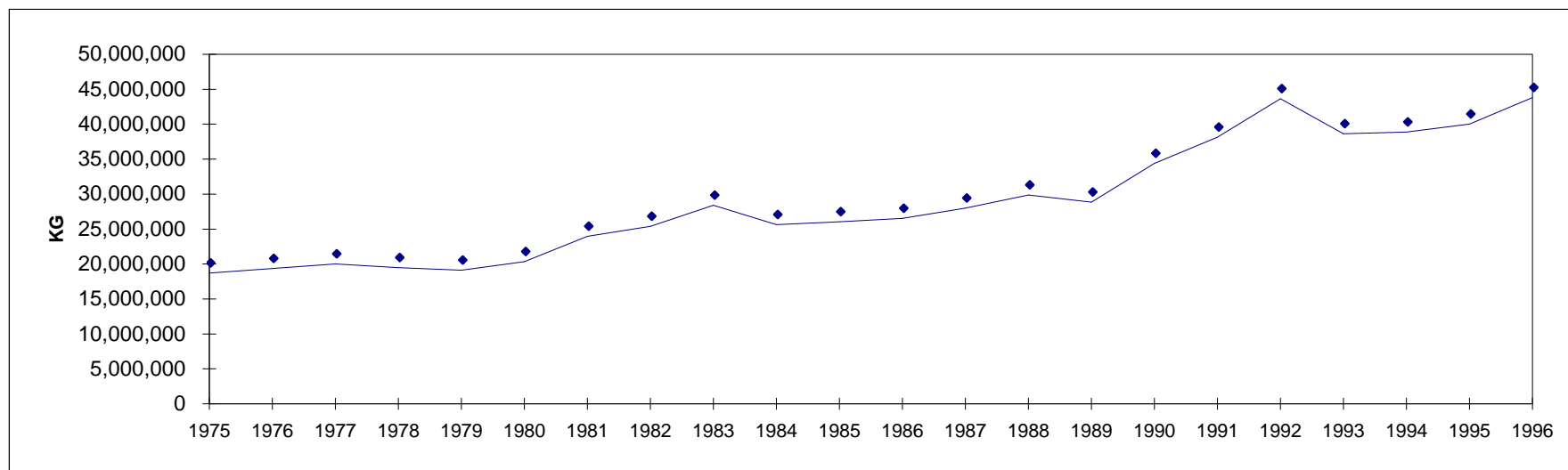


TABLE 29 (cont'd):

MATURE CHICKEN SLAUGHTERED IN REGISTERED STATIONS
NUMBERS AND EVISCERATED WEIGHT EQUIVALENT

1996

MATURE CHICKEN - POULETS ADULTES

TABLEAU 29 (suite):

POULETS ADULTES ABATTUS AUX POSTES ENREGISTRÉS
NOMBRE ET ÉQUIVALENT EN POIDS ÉVISCÉRÉ

	CANNERS - CONSERVERIE		OTHERS - AUTRES		TOTAL		
	Head - Têtes	Kg.	Head - Têtes	Kg.	Head - Têtes	Kg.	
CANADA 1996 CANADA							
January	2,757,912	2,786,610	373,018	1,025,207	3,130,930	3,811,817	janvier
February	2,604,042	2,629,731	270,418	740,635	2,874,460	3,370,366	février
March	2,556,330	2,607,539	390,427	1,072,486	2,946,757	3,680,025	mars
April	2,838,439	2,954,588	248,907	689,457	3,087,346	3,644,045	avril
May	2,511,276	2,624,692	339,281	952,225	2,850,557	3,576,917	mai
June	2,746,941	2,882,329	327,638	893,731	3,074,579	3,776,060	juin
July	2,594,020	2,666,754	355,112	962,491	2,949,132	3,629,245	juillet
August	2,772,741	2,944,474	331,151	921,809	3,103,892	3,866,283	août
September	2,900,886	3,010,065	383,049	1,045,872	3,283,935	4,055,937	septembre
October	2,867,543	2,944,761	359,582	962,880	3,227,125	3,907,641	octobre
November	2,732,756	2,773,324	333,567	891,371	3,066,323	3,664,695	novembre
December	2,094,193	2,162,203	246,809	658,154	2,341,002	2,820,357	décembre
1996	31,977,079	32,987,070	3,958,959	10,816,318	35,936,038	43,803,388	1996
1995	27,792,908	29,052,283	3,942,411	10,958,145	31,735,319	40,010,428	1995
BRITISH COLUMBIA / ALBERTA - COLOMBIE-BRITANNIQUE / ALBERTA							
January	261,609	283,388	110,176	296,787	371,785	580,175	janvier
February	174,907	187,156	61,613	167,975	236,520	355,131	février
March	232,581	250,978	84,423	242,631	317,004	493,609	mars
April	240,863	256,331	64,178	175,121	305,041	431,452	avril
May	155,675	162,142	73,790	203,644	229,465	365,786	mai
June	194,447	195,534	104,827	282,215	299,274	477,749	juin
July	193,072	204,622	80,009	220,537	273,081	425,159	juillet
August	206,348	220,724	72,063	199,613	278,411	420,337	août
September	258,441	274,281	74,409	202,752	332,850	477,033	septembre
October	273,373	279,574	89,226	239,733	362,599	519,307	octobre
November	124,877	127,664	101,642	269,650	226,519	397,314	novembre
December	159,909	176,248	54,967	138,289	214,876	314,537	décembre
1996	2,476,102	2,618,642	971,323	2,638,947	3,447,425	5,257,589	1996
1995	2,301,666	2,471,643	894,727	2,456,120	3,196,393	4,927,763	1995

TABLE 29 (cont'd):

MATURE CHICKEN SLAUGHTERED IN REGISTERED STATIONS
NUMBERS AND EVISCERATED WEIGHT EQUIVALENT

1996

MATURE CHICKEN - POULETS ADULTES

TABLEAU 29 (suite):

POULETS ADULTES ABATTUS AUX POSTES ENREGISTRÉS
NOMBRE ET ÉQUIVALENT EN POIDS ÉVISCÉRÉ

	CANNERS - CONSERVERIE		OTHERS - AUTRES		TOTAL		
	Head - Têtes	Kg.	Head - Têtes	Kg.	Head - Têtes	Kg.	
SASKATCHEWAN - MANITOBA							
January	268,783	271,456	15,375	41,107	284,158	312,563	janvier
February	198,812	207,703	6,814	17,284	205,626	224,987	février
March	240,066	246,488	29,268	76,194	269,334	322,682	mars
April	233,952	243,896	15,264	44,033	249,216	287,929	avril
May	219,588	237,327	12,976	35,903	232,564	273,230	mai
June	228,086	234,390	12,958	32,806	241,044	267,196	juin
July	173,953	190,046	13,946	37,875	187,899	227,921	juillet
August	168,044	179,630	8,320	22,506	176,364	202,136	août
September	176,089	185,549	27,097	74,859	203,186	260,408	septembre
October	118,295	123,669	14,100	38,275	132,395	161,944	octobre
November	133,089	141,360	25,255	67,862	158,344	209,222	novembre
December	80,468	80,652	508	1,377	80,976	82,029	décembre
1996	2,239,225	2,342,166	181,881	490,081	2,421,106	2,832,247	1996
1995	2,808,984	2,925,958	184,217	497,112	2,993,201	3,423,070	1995
ONTARIO - ONTARIO							
January	1,904,230	1,886,047	180,052	495,354	2,084,282	2,381,401	janvier
February	1,843,950	1,813,248	145,135	394,291	1,989,085	2,207,539	février
March	1,705,315	1,683,865	204,563	551,855	1,909,878	2,235,720	mars
April	1,868,626	1,920,759	117,577	320,351	1,986,203	2,241,110	avril
May	1,806,267	1,862,858	167,361	467,211	1,973,628	2,330,069	mai
June	1,891,132	1,973,650	141,667	385,192	2,032,799	2,358,842	juin
July	1,996,276	2,029,304	179,591	478,572	2,175,867	2,507,876	juillet
August	1,919,662	2,007,202	206,934	578,350	2,126,596	2,585,552	août
September	2,035,757	2,072,238	187,223	514,082	2,222,980	2,586,320	septembre
October	2,066,869	2,096,714	203,806	537,180	2,270,675	2,633,894	octobre
November	2,054,889	2,049,208	151,866	402,253	2,206,755	2,451,461	novembre
December	1,585,735	1,622,140	142,029	379,579	1,727,764	2,001,719	décembre
1996	22,678,708	23,017,233	2,027,804	5,504,270	24,706,512	28,521,503	1996
1995	18,108,403	18,608,804	2,063,170	5,717,072	20,171,573	24,325,876	1995

TABLE 29 (cont'd):

MATURE CHICKEN SLAUGHTERED IN REGISTERED STATIONS
NUMBERS AND EVISCERATED WEIGHT EQUIVALENT

1996

MATURE CHICKEN - POULETS ADULTES

TABLEAU 29 (suite):

POULETS ADULTES ABATTUS AUX POSTES ENREGISTRÉS
NOMBRE ET ÉQUIVALENT EN POIDS ÉVISCÉRÉ

	CANNERS - CONSERVERIE		OTHERS - AUTRES		TOTAL		
	Head - Têtes	Kg.	Head - Têtes	Kg.	Head - Têtes	Kg.	
QUEBEC - QUÉBEC							
January	282,624	302,242	57,483	163,689	340,107	465,931	janvier
February	365,750	393,065	56,856	161,085	422,606	554,150	février
March	356,150	396,822	64,440	181,826	420,590	578,648	mars
April	410,882	433,303	29,133	80,958	440,015	514,261	avril
May	257,395	280,202	66,925	192,041	324,320	472,243	mai
June	380,618	404,706	50,859	143,689	431,477	548,395	juin
July	183,723	184,887	66,714	182,546	250,437	367,433	juillet
August	413,940	444,902	32,753	89,796	446,693	534,698	août
September	358,321	386,525	83,685	222,024	442,006	608,549	septembre
October	325,207	337,855	42,275	116,987	367,482	454,842	octobre
November	387,041	416,522	25,106	69,891	412,147	486,413	novembre
December	265,859	280,752	47,427	133,049	313,286	413,801	décembre
1996	3,987,510	4,261,783	623,656	1,737,581	4,611,166	5,999,364	1996
1995	3,977,898	4,337,448	631,335	1,808,624	4,609,233	6,146,072	1995
ATLANTIC PROVINCES - PROVINCES ATLANTIQUES							
January	40,666	43,477	9,932	28,270	50,598	71,747	janvier
February	20,623	28,559	0	0	20,623	28,559	février
March	22,218	29,386	7,733	19,980	29,951	49,366	mars
April	84,116	100,299	22,755	68,994	106,871	169,293	avril
May	72,351	82,163	18,229	53,426	90,580	135,589	mai
June	52,658	74,049	17,327	49,829	69,985	123,878	juin
July	46,996	57,895	14,852	42,961	61,848	100,856	juillet
August	64,747	92,016	11,081	31,544	75,828	123,560	août
September	72,278	91,472	10,635	32,155	82,913	123,627	septembre
October	83,799	106,949	10,175	30,705	93,974	137,654	octobre
November	32,860	38,570	29,698	81,715	62,558	120,285	novembre
December	2,222	2,411	1,878	5,860	4,100	8,271	décembre
1996	595,534	747,246	154,295	445,439	749,829	1,192,685	1996
1995	595,957	708,430	168,962	479,217	764,919	1,187,647	1995

1975	18,695,162
1976	19,346,855
1977	20,004,599
1978	19,478,815
1979	19,121,700
1980	20,352,220
1981	23,961,342
1982	25,379,618
1983	28,392,375
1984	25,639,278
1985	26,043,176
1986	26,539,361
1987	28,011,809
1988	29,879,880
1989	28,830,547
1990	34,393,044
1991	38,130,023
1992	43,635,587
1993	38,650,140
1994	38,883,509
1995	40,010,428
1996	43,803,388

