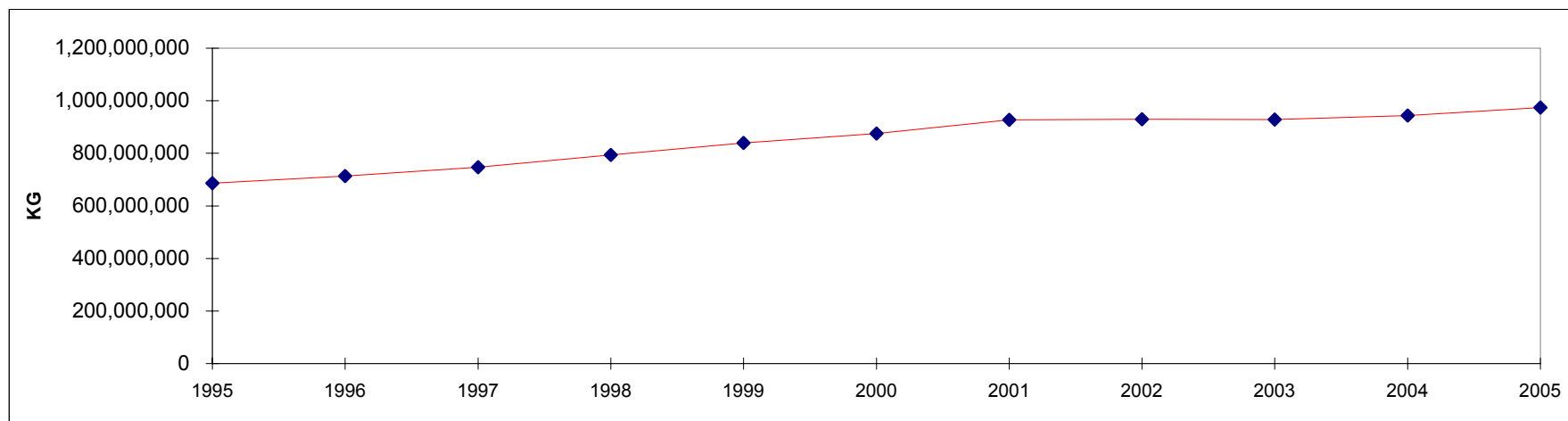


**CHICKEN SLAUGHTERED IN REGISTERED STATIONS
NUMBERS AND EVISCERATED WEIGHT EQUIVALENT**

CHICKENS - POULETS

**POULETS ABATTUS AUX POSTES ENREGISTRÉS
NOMBRE ET ÉQUIVALENT EN POIDS ÉVISCÉRÉ**

	Under 1 kg Moins de 1 kg		1 kg and under 2 kg 1 kg et moins de 2 kg		2 kg and over 2 kg et plus		TOTAL		
	Head - Têtes	Kg	Head - Têtes	Kg	Head - Têtes	Kg	Head - Têtes	Kg	
1995	2,747,071	1,898,977	435,968,915	621,613,649	26,428,408	63,271,212	465,144,394	686,783,838	1995
1996	3,104,314	2,103,523	446,921,772	637,924,986	30,961,075	73,953,017	480,987,161	713,981,526	1996
1997	2,853,528	1,764,234	464,900,379	671,401,530	31,027,677	73,910,868	498,781,584	747,076,632	1997
1998	2,390,609	1,484,838	490,420,518	724,225,749	28,135,612	68,401,357	520,946,739	794,111,944	1998
1999	2,430,144	1,744,810	520,388,607	768,053,109	28,485,644	69,881,737	551,304,395	839,679,656	1999
2000	1,661,233	1,131,452	539,384,635	799,133,225	30,272,592	74,766,335	571,318,460	875,031,012	2000
2001	2,957,841	2,058,929	575,740,067	851,558,301	29,383,412	74,167,139	608,081,320	927,784,369	2001
2002	3,012,617	1,985,719	577,289,172	856,587,068	27,797,352	70,698,540	608,099,141	929,271,327	2002
2003	3,331,494	2,170,742	564,721,800	847,258,190	31,356,522	79,301,490	599,409,816	928,730,422	2003
2004	2,259,635	1,535,315	561,859,601	858,270,199	32,534,662	83,793,579	596,653,899	943,599,092	2004
2005	2,514,062	1,773,365	571,901,715	880,850,622	35,523,358	91,307,689	609,939,130	973,931,676	2005



**CHICKEN SLAUGHTERED IN REGISTERED STATIONS
NUMBERS AND EVISCERATED WEIGHT EQUIVALENT**

**2005
CHICKENS - POULETS**

**POULETS ABATTUS AUX POSTES ENREGISTRÉS
NOMBRE ET ÉQUIVALENT EN POIDS ÉVISCÉRÉ**

Under 1 kg Moins de 1 kg		1 kg and under 2 kg 1 kg et moins de 2 kg		2 kg and over 2 kg et plus		TOTAL	
Head - Têtes	Kg	Head - Têtes	Kg	Head - Têtes	Kg	Head - Têtes	Kg

CANADA

January	147,253	105,355	47,465,310	72,811,970	3,636,496	9,222,511	51,249,059	82,139,836	janvier
February	147,295	96,240	44,150,190	67,728,194	3,056,050	7,882,371	47,353,535	75,706,805	février
March	177,581	123,540	47,490,892	73,128,297	3,314,954	8,516,705	50,983,427	81,768,542	mars
April	221,546	155,038	48,330,441	74,684,153	3,229,110	8,260,844	51,781,097	83,100,035	avril
May	229,007	165,679	49,859,715	77,089,611	3,195,869	8,315,252	53,284,591	85,570,542	mai
June	196,985	134,535	48,459,404	74,063,414	2,419,405	6,379,695	51,075,794	80,577,644	juin
July	204,724	147,395	49,922,997	75,433,972	2,404,346	6,218,259	52,532,067	81,799,626	juillet
August	242,702	176,354	52,068,559	79,209,835	2,528,375	6,390,638	54,839,636	85,776,827	août
September	239,979	175,616	47,189,416	72,671,479	2,839,235	7,237,433	50,268,630	80,084,528	septembre
October	214,811	150,112	47,553,828	74,168,805	2,951,123	7,495,104	50,719,762	81,814,021	octobre
November	254,386	180,000	45,507,756	71,226,296	2,944,876	7,656,455	48,707,018	79,062,751	novembre
December	237,794	163,501	43,903,205	68,634,594	3,003,515	7,732,424	47,144,514	76,530,519	décembre
2005	2,514,063	1,773,365	571,901,713	880,850,620	35,523,354	91,307,691	609,939,130	973,931,676	2005
2004	2,259,636	1,535,315	561,859,601	858,270,198	32,534,662	83,793,579	596,653,899	943,599,092	2004

BRITISH COLUMBIA - COLOMBIE-BRITANNIQUE

January	84,019	60,843	8,503,778	13,119,029	52,368	120,085	8,640,165	13,299,957	janvier
February	104,654	65,286	7,646,211	11,829,237	51,899	119,322	7,802,764	12,013,845	février
March	81,240	55,395	8,078,983	12,309,578	38,997	89,625	8,199,220	12,454,598	mars
April	125,973	90,786	8,376,186	12,859,556	28,415	70,507	8,530,574	13,020,849	avril
May	132,103	96,155	8,651,798	13,114,123	26,722	64,933	8,810,623	13,275,211	mai
June	101,601	69,730	8,440,355	12,912,239	17,596	43,160	8,559,552	13,025,129	juin
July	113,229	80,483	8,719,605	13,117,650	15,335	36,987	8,848,169	13,235,120	juillet
August	116,906	85,488	9,049,211	13,690,328	16,245	37,760	9,182,362	13,813,576	août
September	127,541	94,278	8,278,012	12,618,491	14,937	37,683	8,420,490	12,750,452	septembre
October	96,849	67,006	8,478,096	13,092,710	21,418	51,431	8,596,363	13,211,147	octobre
November	124,819	86,361	7,876,819	12,096,483	26,763	65,211	8,028,401	12,248,055	novembre
December	106,351	70,479	7,675,306	11,900,193	72,689	159,144	7,854,346	12,129,816	décembre
2005	1,315,285	922,290	99,774,360	152,659,617	383,384	895,848	101,473,029	154,477,755	2005
2004	959,977	637,442	77,085,879	118,585,949	476,785	1,199,571	78,522,641	120,422,962	2004

CHICKEN SLAUGHTERED IN REGISTERED STATIONS
NUMBERS AND EVISCERATED WEIGHT EQUIVALENT

2005
CHICKENS - POULETS

POULETS ABATTUS AUX POSTES ENREGISTRÉS
NOMBRE ET ÉQUIVALENT EN POIDS ÉVISCÉRÉ

Under 1 kg Moins de 1 kg		1 kg and under 2 kg 1 kg et moins de 2 kg		2 kg and over 2 kg et plus		TOTAL	
Head - Têtes	Kg	Head - Têtes	Kg	Head - Têtes	Kg	Head - Têtes	Kg

ALBERTA

January	0	0	4,374,037	7,157,987	0	0	4,374,037	7,157,987	janvier
February	1,821	1,735	3,876,484	6,328,657	3,864	11,592	3,882,169	6,341,984	février
March	2,229	2,123	4,599,563	7,598,733	0	0	4,601,792	7,600,856	mars
April	1,400	1,334	4,381,730	7,109,361	0	0	4,383,130	7,110,695	avril
May	2,600	2,476	4,615,077	7,548,825	1,200	2,450	4,618,877	7,553,751	mai
June	1,650	1,572	4,318,186	6,976,032	0	0	4,319,836	6,977,604	juin
July	4,000	3,811	4,585,688	7,339,026	0	0	4,589,688	7,342,837	juillet
August	0	0	4,529,526	7,314,292	0	0	4,529,526	7,314,292	août
September	2,966	2,825	4,371,635	7,143,674	72	179	4,374,673	7,146,678	septembre
October	2,111	2,011	4,190,754	6,879,475	1,636	3,435	4,194,501	6,884,921	octobre
November	1,800	1,296	4,345,586	7,116,074	4,089	8,588	4,351,475	7,125,958	novembre
December	0	0	4,157,432	6,775,084	2,094	4,241	4,159,526	6,779,325	décembre
2005	20,577	19,183	52,345,698	85,287,220	12,955	30,485	52,379,230	85,336,888	2005
2004	8,950	8,320	58,447,338	93,018,242	26,382	56,688	58,482,670	93,083,250	2004

SASKATCHEWAN / MANITOBA

January	0	0	4,395,212	5,957,396	1,927	5,190	4,397,139	5,962,586	janvier
February	0	0	4,101,083	5,561,682	1,481	4,196	4,102,564	5,565,878	février
March	0	0	4,257,019	5,931,574	6,877	16,616	4,263,896	5,948,190	mars
April	0	0	4,447,466	6,364,329	3,332	9,821	4,450,798	6,374,150	avril
May	0	0	4,427,931	6,388,150	3,695	10,698	4,431,626	6,398,848	mai
June	0	0	4,364,590	6,167,830	5,404	16,283	4,369,994	6,184,113	juin
July	0	0	4,473,190	6,271,764	8,406	22,724	4,481,596	6,294,488	juillet
August	0	0	4,527,463	6,342,969	11,318	32,316	4,538,781	6,375,285	août
September	55	45	4,182,781	5,914,063	19,605	56,366	4,202,441	5,970,474	septembre
October	1,262	1,192	3,887,537	5,607,852	13,500	39,011	3,902,299	5,648,055	octobre
November	3,006	2,861	3,518,620	5,074,225	5,050	14,462	3,526,676	5,091,548	novembre
December	0	0	3,442,878	4,956,764	2,967	8,185	3,445,845	4,964,949	décembre
2005	4,323	4,098	50,025,770	70,538,598	83,562	235,868	50,113,655	70,778,564	2005
2004	20	16	48,137,770	65,498,003	81,581	222,401	48,219,371	65,720,420	2004

ONTARIO

January	15,414	10,983	13,636,725	20,870,147	2,592,425	6,385,489	16,244,564	27,266,619	janvier
February	12,654	9,428	13,049,089	20,082,171	2,089,920	5,224,252	15,151,663	25,315,851	février
March	13,945	10,095	13,663,396	21,037,557	2,323,276	5,794,099	16,000,617	26,841,751	mars
April	18,252	10,708	14,427,546	22,297,242	2,232,893	5,486,870	16,678,691	27,794,820	avril
May	17,402	11,981	14,613,472	22,650,345	2,272,772	5,769,519	16,903,646	28,431,845	mai
June	32,135	20,394	14,922,919	22,736,063	1,533,694	3,943,474	16,488,748	26,699,931	juin
July	16,082	10,959	15,327,776	23,155,473	1,509,264	3,817,267	16,853,122	26,983,699	juillet
August	46,433	34,514	15,753,114	23,944,653	1,578,048	3,844,357	17,377,595	27,823,524	août
September	7,561	5,537	14,058,466	21,824,488	1,917,485	4,727,553	15,983,512	26,557,578	septembre
October	16,405	11,335	13,996,582	21,939,744	2,066,092	5,052,716	16,079,079	27,003,795	octobre
November	12,366	8,076	13,683,739	21,788,412	2,006,445	5,018,985	15,702,550	26,815,473	novembre
December	31,425	22,789	12,831,666	20,257,216	2,103,677	5,255,608	14,966,768	25,535,613	décembre
2005	240,074	166,799	169,964,490	262,583,511	24,225,991	60,320,189	194,430,555	323,070,499	2005
2004	249,191	174,805	172,412,524	265,232,557	22,537,576	56,826,439	195,199,291	322,233,801	2004

CHICKEN SLAUGHTERED IN REGISTERED STATIONS
NUMBERS AND EVISCERATED WEIGHT EQUIVALENT

2005
CHICKENS - POULETS

POULETS ABATTUS AUX POSTES ENREGISTRÉS
NOMBRE ET ÉQUIVALENT EN POIDS ÉVISCÉRÉ

Under 1 kg Moins de 1 kg		1 kg and under 2 kg 1 kg et moins de 2 kg		2 kg and over 2 kg et plus		TOTAL	
Head - Têtes	Kg	Head - Têtes	Kg	Head - Têtes	Kg	Head - Têtes	Kg

QUEBEC - QUÉBEC

January	47,820	33,529	12,499,874	19,581,954	965,077	2,642,211	13,512,771	22,257,694	janvier
February	28,166	19,791	11,456,047	17,966,585	890,761	2,467,753	12,374,974	20,454,129	février
March	80,167	55,927	12,654,211	19,887,837	923,405	2,554,194	13,657,783	22,497,958	mars
April	75,921	52,210	12,291,736	19,414,063	943,698	2,626,163	13,311,355	22,092,436	avril
May	76,902	55,067	13,240,497	20,898,311	873,642	2,414,900	14,191,041	23,368,278	mai
June	61,599	42,839	12,247,225	19,006,948	842,344	2,312,084	13,151,168	21,361,871	juin
July	71,413	52,142	12,507,015	19,170,154	848,956	2,279,759	13,427,384	21,502,055	juillet
August	79,363	56,352	13,688,493	21,192,881	890,417	2,392,096	14,658,273	23,641,329	août
September	101,856	72,931	12,149,621	18,936,739	865,732	2,362,515	13,117,209	21,372,185	septembre
October	98,184	68,568	12,776,580	20,263,686	823,564	2,284,063	13,698,328	22,616,317	octobre
November	112,395	81,406	11,932,591	18,908,178	876,148	2,477,056	12,921,134	21,466,640	novembre
December	100,018	70,233	11,808,172	18,810,167	798,390	2,243,083	12,706,580	21,123,483	décembre
2005	933,804	660,995	149,252,062	234,037,503	10,542,134	29,055,877	160,728,000	263,754,375	2005
2004	1,041,498	714,732	154,643,186	239,861,134	9,155,952	24,752,185	164,840,636	265,328,051	2004

ATLANTIC PROVINCES - PROVINCES DE L'ATLANTIQUE

January	0	0	4,055,684	6,125,457	24,699	69,536	4,080,383	6,194,993	janvier
February	0	0	4,021,276	5,959,862	18,125	55,256	4,039,401	6,015,118	février
March	0	0	4,237,720	6,363,018	22,399	62,171	4,260,119	6,425,189	mars
April	0	0	4,405,777	6,639,602	20,772	67,483	4,426,549	6,707,085	avril
May	0	0	4,310,940	6,489,857	17,838	52,752	4,328,778	6,542,609	mai
June	0	0	4,166,129	6,264,302	20,367	64,694	4,186,496	6,328,996	juin
July	0	0	4,309,723	6,379,905	22,385	61,522	4,332,108	6,441,427	juillet
August	0	0	4,520,752	6,724,712	32,347	84,109	4,553,099	6,808,821	août
September	0	0	4,148,901	6,234,024	21,404	53,137	4,170,305	6,287,161	septembre
October	0	0	4,224,279	6,385,338	24,913	64,448	4,249,192	6,449,786	octobre
November	0	0	4,150,401	6,242,924	26,381	72,153	4,176,782	6,315,077	novembre
December	0	0	3,987,751	5,935,170	23,698	62,163	4,011,449	5,997,333	décembre
2005	0	0	50,539,333	75,744,171	275,328	769,424	50,814,661	76,513,595	2005
2004	0	0	51,132,904	76,074,313	256,386	736,295	51,389,290	76,810,608	2004

ATLANTIC PROVINCES INCLUDE :

New Brunswick, Nova Scotia, Prince Edward Island and Newfoundland

LES PROVINCES DE L'ATLANTIQUE COMPRENNENT:

Le Nouveau-Brunswick, la Nouvelle-Écosse, l'Île-du-Prince-Édward et Terre-Neuve

Source: Canadian Food Inspection Agency, as compiled by AAFC, AID, Poultry Section
Agence canadienne d'inspection des aliments, compilé par AAC, DIA, Section de la volaille

Printed as of / Imprimé le: 2006/05/05