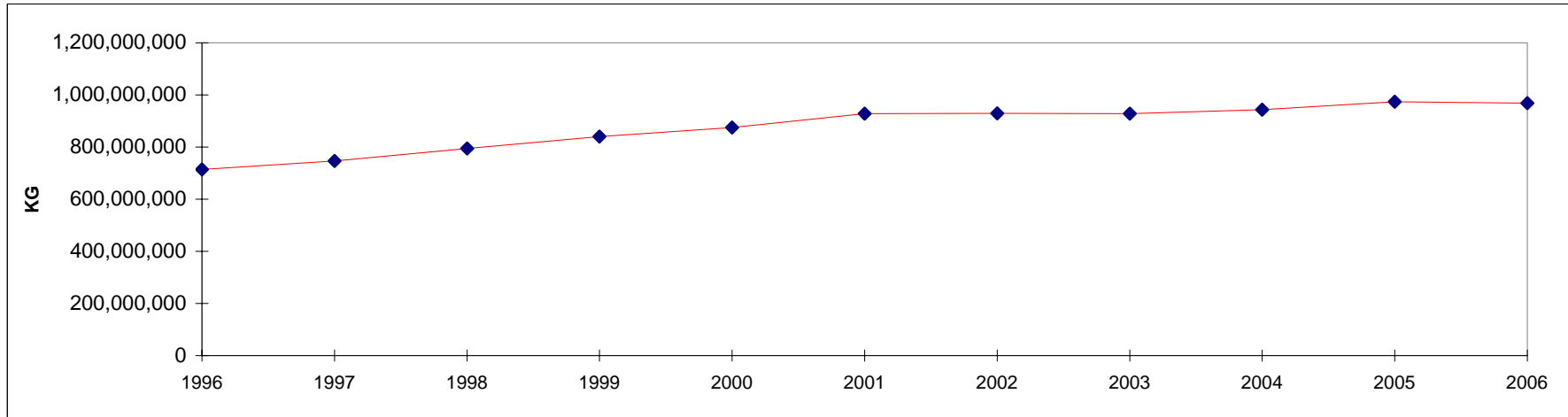


**CHICKEN SLAUGHTERED IN REGISTERED STATIONS
NUMBERS AND EVISCERATED WEIGHT EQUIVALENT**

CHICKENS - POULETS

**POULETS ABATTUS AUX POSTES ENREGISTRÉS
NOMBRE ET ÉQUIVALENT EN POIDS ÉVISCÉRÉ**

	Under 1 kg Moins de 1 kg		1 kg and under 2 kg 1 kg et moins de 2 kg		2 kg and over 2 kg et plus		TOTAL		
	Head - Têtes	Kg	Head - Têtes	Kg	Head - Têtes	Kg	Head - Têtes	Kg	
1996	3,104,314	2,103,523	446,921,772	637,924,986	30,961,075	73,953,017	480,987,161	713,981,526	1996
1997	2,853,528	1,764,234	464,900,379	671,401,530	31,027,677	73,910,868	498,781,584	747,076,632	1997
1998	2,390,609	1,484,838	490,420,518	724,225,749	28,135,612	68,401,357	520,946,739	794,111,944	1998
1999	2,430,144	1,744,810	520,388,607	768,053,109	28,485,644	69,881,737	551,304,395	839,679,656	1999
2000	1,661,233	1,131,452	539,384,635	799,133,225	30,272,592	74,766,335	571,318,460	875,031,012	2000
2001	2,957,841	2,058,929	575,740,067	851,558,301	29,383,412	74,167,139	608,081,320	927,784,369	2001
2002	3,012,617	1,985,719	577,289,172	856,587,068	27,797,352	70,698,540	608,099,141	929,271,327	2002
2003	3,331,494	2,170,742	564,721,800	847,258,190	31,356,522	79,301,490	599,409,816	928,730,422	2003
2004	2,259,635	1,535,315	561,859,601	858,270,199	32,534,662	83,793,579	596,653,898	943,599,093	2004
2005	2,514,062	1,773,365	572,052,713	881,095,058	35,523,358	91,307,689	610,090,133	974,176,113	2005
2006	3,144,998	2,345,441	566,262,859	878,529,279	33,770,699	87,139,724	603,178,550	968,014,450	2006



**CHICKEN SLAUGHTERED IN REGISTERED STATIONS
NUMBERS AND EVISCERATED WEIGHT EQUIVALENT**

**2006
CHICKENS - POULETS**

**POULETS ABATTUS AUX POSTES ENREGISTRÉS
NOMBRE ET ÉQUIVALENT EN POIDS ÉVISCÉRÉ**

Under 1 kg Moins de 1 kg		1 kg and under 2 kg 1 kg et moins de 2 kg		2 kg and over 2 kg et plus		TOTAL	
Head - Têtes	Kg	Head - Têtes	Kg	Head - Têtes	Kg	Head - Têtes	Kg

CANADA

January	206,193	143,384	48,674,652	76,100,505	3,533,953	8,958,727	52,414,798	85,202,616	janvier
February	229,374	163,400	44,404,232	68,853,731	2,758,083	7,156,775	47,391,689	76,173,906	février
March	336,634	229,276	48,696,417	75,663,946	2,943,441	7,656,090	51,976,492	83,549,312	mars
April	261,353	195,978	45,215,623	70,106,661	2,962,168	7,593,266	48,439,144	77,895,905	avril
May	280,489	207,068	50,481,264	78,550,142	3,094,750	8,086,191	53,856,503	86,843,401	mai
June	256,033	193,510	47,667,325	73,561,367	2,577,815	6,648,677	50,501,173	80,403,554	juin
July	266,349	204,459	49,434,547	75,499,979	2,742,728	6,992,334	52,443,624	82,696,772	juillet
August	326,852	259,491	47,684,774	73,297,605	2,216,033	5,837,005	50,227,659	79,394,101	août
September	234,413	181,958	45,831,805	71,240,150	2,825,559	7,273,050	48,891,777	78,695,158	septembre
October	243,565	190,513	47,227,555	74,007,395	2,811,745	7,269,758	50,282,865	81,467,666	octobre
November	255,017	192,569	47,429,650	73,952,398	2,732,849	7,082,779	50,417,516	81,227,746	novembre
December	248,726	183,839	43,515,012	67,695,400	2,571,572	6,585,074	46,335,310	74,464,313	décembre
2006	3,144,998	2,345,445	566,262,856	878,529,279	33,770,696	87,139,726	603,178,550	968,014,450	2006
2005	2,514,062	1,773,365	572,052,713	881,095,059	35,523,358	91,307,689	610,090,133	974,176,113	2005

BRITISH COLUMBIA - COLOMBIE-BRITANNIQUE

January	75,300	51,234	8,488,777	13,148,052	184,971	450,989	8,749,048	13,650,275	janvier
February	84,699	61,630	7,422,244	11,531,992	72,052	179,607	7,578,995	11,773,229	février
March	157,574	105,403	8,341,929	13,049,276	31,207	78,265	8,530,710	13,232,944	mars
April	133,705	94,154	7,804,665	12,242,737	58,235	133,295	7,996,605	12,470,186	avril
May	122,005	84,762	8,662,945	13,381,155	49,451	114,713	8,834,401	13,580,630	mai
June	119,042	86,823	8,150,976	12,612,593	60,005	144,704	8,330,023	12,844,120	juin
July	108,269	74,835	7,911,030	12,108,076	43,174	98,267	8,062,473	12,281,178	juillet
August	96,663	58,577	7,806,987	11,948,104	27,779	63,414	7,931,429	12,070,095	août
September	74,526	50,234	7,303,912	11,234,182	48,450	108,869	7,426,888	11,393,285	septembre
October	86,550	60,473	7,573,168	11,874,960	49,527	107,744	7,709,245	12,043,177	octobre
November	86,633	63,529	7,538,766	11,689,372	58,644	134,616	7,684,043	11,887,517	novembre
December	84,650	63,276	7,139,230	11,203,750	67,252	151,994	7,291,132	11,419,020	décembre
2006	1,229,616	854,930	94,144,629	146,024,249	750,747	1,766,477	96,124,992	148,645,656	2006
2005	1,315,285	922,291	99,774,360	152,659,618	383,385	895,848	101,473,030	154,477,757	2005

CHICKEN SLAUGHTERED IN REGISTERED STATIONS
NUMBERS AND EVISCERATED WEIGHT EQUIVALENT

2006
CHICKENS - POULETS

POULETS ABATTUS AUX POSTES ENREGISTRÉS
NOMBRE ET ÉQUIVALENT EN POIDS ÉVISCÉRÉ

Under 1 kg Moins de 1 kg		1 kg and under 2 kg 1 kg et moins de 2 kg		2 kg and over 2 kg et plus		TOTAL	
Head - Têtes	Kg	Head - Têtes	Kg	Head - Têtes	Kg	Head - Têtes	Kg

ALBERTA

January	2,686	2,559	4,426,039	7,249,783	0	0	4,428,725	7,252,342	janvier
February	2,744	2,613	3,874,333	6,310,684	0	0	3,877,077	6,313,297	février
March	1,600	1,524	4,566,331	7,451,518	1,291	2,615	4,569,222	7,455,657	mars
April	2,053	1,917	4,194,035	6,780,825	4,190	9,143	4,200,278	6,791,885	avril
May	1,900	1,810	4,689,619	7,477,833	0	0	4,691,519	7,479,643	mai
June	3,886	3,699	4,570,867	7,312,765	24,299	54,738	4,599,052	7,371,202	juin
July	2,141	2,039	4,778,743	7,497,796	501	1,015	4,781,385	7,500,850	juillet
August	3,714	3,536	4,433,681	7,069,242	1,254	2,538	4,438,649	7,075,316	août
September	2,786	2,652	4,165,189	6,662,492	0	0	4,167,975	6,665,144	septembre
October	3,043	2,897	4,476,416	7,298,335	0	0	4,479,459	7,301,232	octobre
November	3,467	3,301	4,275,432	6,981,443	0	0	4,278,899	6,984,744	novembre
December	4,600	4,379	4,159,373	6,760,441	0	0	4,163,973	6,764,820	décembre
2006	34,620	32,926	52,610,058	84,853,157	31,535	70,049	52,676,213	84,956,132	2006
2005	20,577	19,181	52,345,698	85,287,222	12,955	30,483	52,379,230	85,336,886	2005

SASKATCHEWAN / MANITOBA

January	1,563	1,490	4,277,147	6,368,087	132,292	293,917	4,411,002	6,663,494	janvier
February	1,187	498	3,767,048	5,555,300	71,260	162,604	3,839,495	5,718,402	février
March	0	0	4,394,681	6,585,773	3,840	10,509	4,398,521	6,596,282	mars
April	0	0	3,856,268	5,778,731	2,085	5,994	3,858,353	5,784,725	avril
May	1,391	1,207	4,250,111	6,353,179	3,216	8,781	4,254,718	6,363,167	mai
June	0	0	4,219,888	6,218,818	5,410	15,621	4,225,298	6,234,439	juin
July	1,650	1,611	4,574,898	6,697,933	5,919	15,457	4,582,467	6,715,001	juillet
August	1,332	1,119	4,231,178	6,321,770	10,728	29,499	4,243,238	6,352,388	août
September	0	0	4,018,472	6,061,780	19,280	50,535	4,037,752	6,112,315	septembre
October	879	719	4,377,642	6,696,831	14,809	42,450	4,393,330	6,740,000	octobre
November	2,163	1,771	4,089,529	6,189,511	8,498	20,001	4,100,190	6,211,283	novembre
December	0	0	3,990,931	6,069,272	3,185	8,527	3,994,116	6,077,799	décembre
2006	10,165	8,415	50,047,793	74,896,985	280,522	663,895	50,338,480	75,569,295	2006
2005	4,323	4,098	50,176,769	70,783,035	83,563	235,869	50,264,655	71,023,002	2005

ONTARIO

January	30,673	20,673	14,140,728	22,237,447	2,371,331	5,846,512	16,542,732	28,104,632	janvier
February	21,711	15,286	13,349,427	20,746,471	1,814,784	4,545,820	15,185,922	25,307,577	février
March	29,899	19,896	14,187,681	22,068,052	2,090,112	5,275,841	16,307,692	27,363,789	mars
April	7,162	3,935	12,738,727	19,900,307	2,019,180	4,963,840	14,765,069	24,868,082	avril
May	31,795	21,731	14,863,699	23,241,957	2,179,005	5,515,331	17,074,499	28,779,019	mai
June	8,910	5,909	14,286,491	22,115,199	1,874,099	4,753,121	16,169,500	26,874,229	juin
July	19,197	14,540	14,116,695	21,673,365	1,946,763	4,855,232	16,082,655	26,543,137	juillet
August	36,298	26,179	14,081,431	21,680,191	1,504,255	3,884,557	15,621,984	25,590,927	août
September	17,120	11,959	13,207,494	20,600,145	2,074,019	5,197,433	15,298,633	25,809,537	septembre
October	28,716	20,239	13,334,132	20,937,966	2,106,536	5,370,252	15,469,384	26,328,457	octobre
November	22,091	17,205	13,484,083	21,260,168	2,084,101	5,340,803	15,590,275	26,618,176	novembre
December	26,152	16,608	12,095,743	18,898,135	1,926,021	4,865,131	14,047,916	23,779,874	décembre
2006	279,724	194,160	163,886,331	255,359,403	23,990,206	60,413,873	188,156,261	315,967,436	2006
2005	240,073	166,800	169,964,491	262,583,511	24,225,993	60,320,189	194,430,557	323,070,500	2005

CHICKEN SLAUGHTERED IN REGISTERED STATIONS
NUMBERS AND EVISCERATED WEIGHT EQUIVALENT

2006
CHICKENS - POULETS

POULETS ABATTUS AUX POSTES ENREGISTRÉS
NOMBRE ET ÉQUIVALENT EN POIDS ÉVISCÉRÉ

Under 1 kg Moins de 1 kg		1 kg and under 2 kg 1 kg et moins de 2 kg		2 kg and over 2 kg et plus		TOTAL	
Head - Têtes	Kg	Head - Têtes	Kg	Head - Têtes	Kg	Head - Têtes	Kg

QUEBEC - QUÉBEC

January	95,971	67,428	13,175,841	20,806,093	820,926	2,302,917	14,092,738	23,176,438	janvier
February	119,033	83,373	12,153,049	18,938,509	780,418	2,218,789	13,052,500	21,240,671	février
March	135,729	94,178	12,994,957	20,185,132	790,523	2,217,187	13,921,209	22,496,497	mars
April	116,461	94,593	12,658,005	19,447,889	860,453	2,434,698	13,634,919	21,977,180	avril
May	123,398	97,558	13,557,847	21,369,700	840,212	2,382,434	14,521,457	23,849,692	mai
June	124,195	97,079	12,151,733	18,930,124	591,066	1,619,150	12,866,994	20,646,353	juin
July	135,092	111,434	13,618,788	20,967,290	724,926	1,967,443	14,478,806	23,046,167	juillet
August	188,845	170,080	12,867,348	19,966,040	645,731	1,787,132	13,701,924	21,923,252	août
September	139,981	117,113	12,932,875	20,431,591	670,347	1,887,975	13,743,203	22,436,679	septembre
October	124,377	106,185	13,223,240	20,789,885	621,156	1,707,614	13,968,773	22,603,684	octobre
November	140,663	106,763	13,831,539	21,586,983	565,054	1,552,129	14,537,256	23,245,875	novembre
December	133,324	99,576	12,257,367	19,022,071	566,812	1,541,435	12,957,503	20,663,082	décembre
2006	1,577,069	1,245,360	155,422,589	242,441,307	8,477,624	23,618,903	165,477,282	267,305,570	2006
2005	933,804	660,995	149,252,062	234,037,503	10,542,134	29,055,876	160,728,000	263,754,374	2005

ATLANTIC PROVINCES - PROVINCES DE L'ATLANTIQUE

January	0	0	4,166,120	6,291,043	24,433	64,392	4,190,553	6,355,435	janvier
February	0	0	3,838,131	5,770,775	19,569	49,955	3,857,700	5,820,730	février
March	11,832	8,275	4,210,838	6,324,195	26,468	71,673	4,249,138	6,404,143	mars
April	1,972	1,379	3,963,923	5,956,172	18,025	46,296	3,983,920	6,003,847	avril
May	0	0	4,457,043	6,726,318	22,866	64,932	4,479,909	6,791,250	mai
June	0	0	4,287,370	6,371,868	22,936	61,343	4,310,306	6,433,211	juin
July	0	0	4,434,393	6,555,519	21,445	54,920	4,455,838	6,610,439	juillet
August	0	0	4,264,149	6,312,258	26,286	69,865	4,290,435	6,382,123	août
September	0	0	4,203,863	6,249,960	13,463	28,238	4,217,326	6,278,198	septembre
October	0	0	4,242,957	6,409,418	19,717	41,698	4,262,674	6,451,116	octobre
November	0	0	4,210,301	6,244,921	16,552	35,230	4,226,853	6,280,151	novembre
December	0	0	3,872,368	5,741,731	8,302	17,987	3,880,670	5,759,718	décembre
2006	13,804	9,654	50,151,456	74,954,178	240,062	606,529	50,405,322	75,570,361	2006
2005	0	0	50,539,333	75,744,170	275,328	769,424	50,814,661	76,513,594	2005

ATLANTIC PROVINCES INCLUDE :

New Brunswick, Nova Scotia, Prince Edward Island and Newfoundland

LES PROVINCES DE L'ATLANTIQUE COMPRENNENT:

Le Nouveau-Brunswick, la Nouvelle-Écosse, l'Île-du-Prince-Édward et Terre-Neuve

Source: Canadian Food Inspection Agency, as compiled by AAFC, AID, Poultry Section
Agence canadienne d'inspection des aliments, compilé par AAC, DIA, Section de la volaille

Printed as of / Imprimé le: 2007-11-23