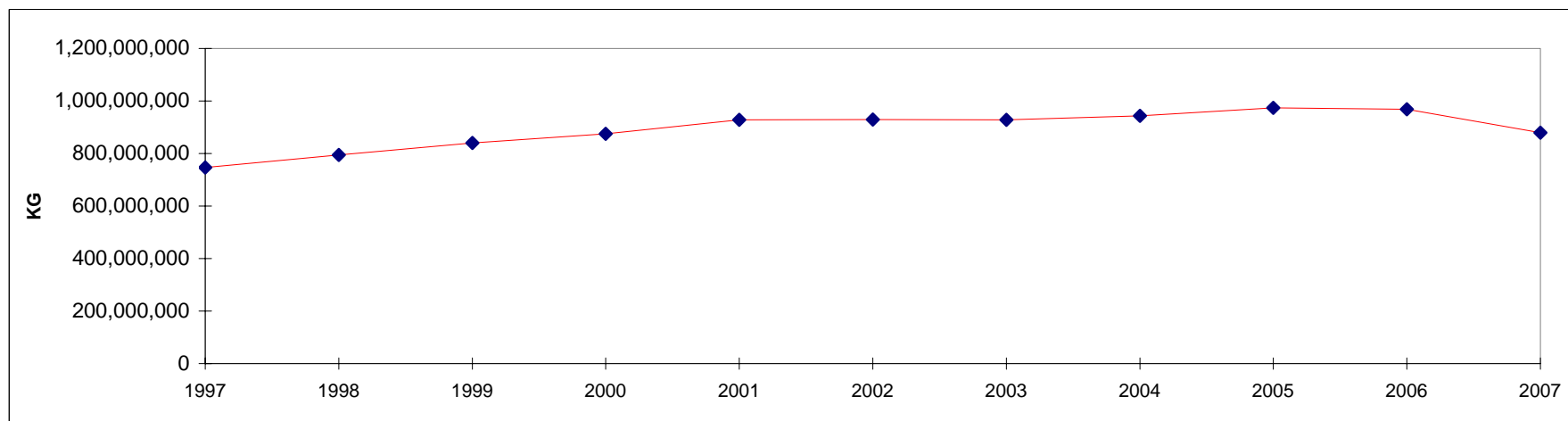


**CHICKEN SLAUGHTERED IN REGISTERED STATIONS  
NUMBERS AND EVISCERATED WEIGHT EQUIVALENT**

**CHICKENS - POULETS**

**POULETS ABATTUS AUX POSTES ENREGISTRÉS  
NOMBRE ET ÉQUIVALENT EN POIDS ÉVISCÉRÉ**

	Under 1 kg Moins de 1 kg		1 kg and under 2 kg 1 kg et moins de 2 kg		2 kg and over 2 kg et plus		TOTAL		
	Head - Têtes	Kg	Head - Têtes	Kg	Head - Têtes	Kg	Head - Têtes	Kg	
1997	2,853,528	1,764,234	464,900,379	671,401,530	31,027,677	73,910,868	498,781,584	747,076,632	1997
1998	2,390,609	1,484,838	490,420,518	724,225,749	28,135,612	68,401,357	520,946,739	794,111,944	1998
1999	2,430,144	1,744,810	520,388,607	768,053,109	28,485,644	69,881,737	551,304,395	839,679,656	1999
2000	1,661,233	1,131,452	539,384,635	799,133,225	30,272,592	74,766,335	571,318,460	875,031,012	2000
2001	2,957,841	2,058,929	575,740,067	851,558,301	29,383,412	74,167,139	608,081,320	927,784,369	2001
2002	3,012,617	1,985,719	577,289,172	856,587,068	27,797,352	70,698,540	608,099,141	929,271,327	2002
2003	3,331,494	2,170,742	564,721,800	847,258,190	31,356,522	79,301,490	599,409,816	928,730,422	2003
2004	2,259,635	1,535,315	561,859,601	858,270,199	32,534,662	83,793,579	596,653,898	943,599,093	2004
2005	2,514,062	1,773,365	572,052,713	881,095,058	35,523,358	91,307,689	610,090,133	974,176,112	2005
2006	3,144,998	2,345,441	566,262,859	878,529,279	33,770,699	87,139,724	603,178,556	968,014,446	2006
2007	2,088,087	1,454,162	515,799,262	803,169,166	29,453,353	74,808,152	547,340,700	879,431,482	2007



**CHICKEN SLAUGHTERED IN REGISTERED STATIONS  
NUMBERS AND EVISCERATED WEIGHT EQUIVALENT**

**2007  
CHICKENS - POULETS**

**POULETS ABATTUS AUX POSTES ENREGISTRÉS  
NOMBRE ET ÉQUIVALENT EN POIDS ÉVISCÉRÉ**

Under 1 kg Moins de 1 kg		1 kg and under 2 kg 1 kg et moins de 2 kg		2 kg and over 2 kg et plus		TOTAL	
Head - Têtes	Kg	Head - Têtes	Kg	Head - Têtes	Kg	Head - Têtes	Kg

**CANADA**

January	196,718	141,468	48,706,376	75,825,106	3,097,927	7,822,697	52,001,021	83,789,271	janvier
February	214,184	152,281	44,033,906	68,253,375	2,445,132	6,293,214	46,693,222	74,698,870	février
March	201,286	138,214	49,864,303	77,188,238	2,580,746	6,566,531	52,646,335	83,892,983	mars
April	163,031	120,966	46,884,474	73,455,209	2,672,810	6,943,963	49,720,315	80,520,138	avril
May	209,560	146,470	50,225,298	78,614,613	2,866,019	7,336,864	53,300,877	86,097,947	mai
June	224,560	154,452	50,826,283	79,056,441	2,875,557	7,227,959	53,926,400	86,438,852	juin
July	205,316	139,211	50,857,533	78,480,174	2,335,653	6,059,487	53,398,502	84,678,872	juillet
August	181,596	119,562	50,801,249	78,534,436	2,876,328	7,165,372	53,859,173	85,819,370	août
September	189,107	129,745	46,008,794	71,870,323	2,716,647	6,798,354	48,914,548	78,798,422	septembre
October	174,080	123,969	50,717,103	79,696,499	3,085,345	7,759,426	53,976,528	87,579,894	octobre
November	128,649	87,825	26,873,939	42,194,753	1,901,191	4,834,285	28,903,779	47,116,863	novembre
December	0	0	0	0	0	0	0	0	décembre
<b>2007</b>	<b>2,088,087</b>	<b>1,454,163</b>	<b>515,799,258</b>	<b>803,169,167</b>	<b>29,453,355</b>	<b>74,808,152</b>	<b>547,340,700</b>	<b>879,431,482</b>	<b>2007</b>
<b>2006</b>	<b>3,144,998</b>	<b>2,345,442</b>	<b>566,262,859</b>	<b>878,529,279</b>	<b>33,770,699</b>	<b>87,139,725</b>	<b>603,178,556</b>	<b>968,014,446</b>	<b>2006</b>

**BRITISH COLUMBIA - COLOMBIE-BRITANNIQUE**

January	79,614	54,733	8,274,290	12,837,165	145,356	329,308	8,499,260	13,221,206	janvier
February	81,688	56,524	7,521,121	11,614,710	29,129	71,455	7,631,938	11,742,689	février
March	75,705	52,843	8,275,694	12,799,998	22,853	59,154	8,374,252	12,911,995	mars
April	63,817	42,429	7,784,945	12,333,413	94,811	210,746	7,943,573	12,586,588	avril
May	93,387	66,099	8,284,880	13,015,279	81,214	179,684	8,459,481	13,261,062	mai
June	105,592	74,148	8,441,684	12,986,441	112,013	248,698	8,659,289	13,309,287	juin
July	85,241	57,310	8,534,038	13,093,550	16,249	40,055	8,635,528	13,190,915	juillet
August	90,067	57,338	8,397,580	13,022,078	46,111	105,855	8,533,758	13,185,271	août
September	83,798	59,163	7,734,946	12,133,512	49,319	111,261	7,868,063	12,303,936	septembre
October	86,899	63,094	8,481,740	13,406,068	36,936	89,243	8,605,575	13,558,405	octobre
November	50,746	33,649	4,410,538	6,909,861	15,831	36,887	4,477,115	6,980,397	novembre
December	0	0	0	0	0	0	0	0	décembre
<b>2007</b>	<b>896,554</b>	<b>617,330</b>	<b>86,141,456</b>	<b>134,152,075</b>	<b>649,822</b>	<b>1,482,346</b>	<b>87,687,832</b>	<b>136,251,751</b>	<b>2007</b>
<b>2006</b>	<b>1,229,616</b>	<b>854,930</b>	<b>94,144,629</b>	<b>146,024,249</b>	<b>750,747</b>	<b>1,766,475</b>	<b>96,124,992</b>	<b>148,645,654</b>	<b>2006</b>

CHICKEN SLAUGHTERED IN REGISTERED STATIONS  
NUMBERS AND EVISCERATED WEIGHT EQUIVALENT

2007  
CHICKENS - POULETS

POULETS ABATTUS AUX POSTES ENREGISTRÉS  
NOMBRE ET ÉQUIVALENT EN POIDS ÉVISCÉRÉ

Under 1 kg Moins de 1 kg		1 kg and under 2 kg 1 kg et moins de 2 kg		2 kg and over 2 kg et plus		TOTAL	
Head - Têtes	Kg	Head - Têtes	Kg	Head - Têtes	Kg	Head - Têtes	Kg

ALBERTA

January	4,300	4,094	4,459,378	7,196,820	0	0	4,463,678	7,200,914	janvier
February	2,600	2,475	4,024,408	6,445,188	0	0	4,027,008	6,447,663	février
March	4,600	4,379	4,666,795	7,420,038	0	0	4,671,395	7,424,417	mars
April	2,400	2,285	4,458,611	7,193,447	0	0	4,461,011	7,195,732	avril
May	2,500	2,380	4,752,448	7,722,096	0	0	4,754,948	7,724,476	mai
June	2,420	2,293	4,674,960	7,527,200	0	0	4,677,380	7,529,493	juin
July	3,143	2,992	4,800,117	7,508,861	2,512	5,411	4,805,772	7,517,264	juillet
August	12,357	11,518	4,693,951	7,440,462	127	333	4,706,435	7,452,313	août
September	2,200	2,094	4,338,755	6,958,836	281	816	4,341,236	6,961,746	septembre
October	2,000	1,904	4,625,216	7,596,089	7,002	14,214	4,634,218	7,612,207	octobre
November	2,200	2,094	2,445,562	3,984,058	12,653	25,622	2,460,415	4,011,774	novembre
December	0	0	0	0	0	0	0	0	décembre
2007	40,720	38,508	47,940,201	76,993,095	22,575	46,396	48,003,496	77,077,999	2007
2006	34,620	32,925	52,610,058	84,853,157	31,535	70,050	52,676,213	84,956,132	2006

SASKATCHEWAN / MANITOBA

January	0	0	4,539,398	6,932,754	5,665	13,770	4,545,063	6,946,524	janvier
February	0	0	3,921,842	5,872,608	2,528	7,107	3,924,370	5,879,715	février
March	0	0	4,515,178	6,863,242	3,931	9,791	4,519,109	6,873,033	mars
April	0	0	4,345,413	6,548,964	2,604	6,595	4,348,017	6,555,559	avril
May	0	0	4,780,408	7,152,278	4,407	11,883	4,784,815	7,164,161	mai
June	700	606	4,730,193	7,079,386	7,448	21,333	4,738,341	7,101,325	juin
July	26	21	4,531,484	6,604,080	12,153	32,679	4,543,663	6,636,780	juillet
August	0	0	4,630,104	6,834,297	13,637	37,045	4,643,741	6,871,342	août
September	139	113	4,128,902	6,311,530	18,426	55,205	4,147,467	6,366,848	septembre
October	434	355	4,662,812	7,006,716	16,401	49,338	4,679,647	7,056,409	octobre
November	0	0	2,347,814	3,654,691	4,857	13,739	2,352,671	3,668,430	novembre
December	0	0	0	0	0	0	0	0	décembre
2007	1,299	1,095	47,133,548	70,860,546	92,057	258,485	47,226,904	71,120,126	2007
2006	10,165	8,415	50,047,794	74,896,985	280,524	663,894	50,338,483	75,569,294	2006

ONTARIO

January	6,775	5,709	13,528,583	21,123,239	2,348,778	5,877,680	15,884,136	27,006,628	janvier
February	23,303	17,452	12,292,149	19,142,153	1,816,792	4,603,819	14,132,244	23,763,424	février
March	25,215	17,734	13,833,464	21,444,773	1,918,429	4,805,364	15,777,108	26,267,871	mars
April	16,094	11,457	13,164,335	20,692,684	1,945,058	5,031,334	15,125,487	25,735,475	avril
May	26,470	16,861	14,008,168	21,811,724	2,131,549	5,387,905	16,166,187	27,216,490	mai
June	20,276	13,873	14,772,553	22,850,854	2,161,753	5,377,498	16,954,582	28,242,225	juin
July	28,858	20,239	14,688,767	22,748,519	1,722,293	4,400,320	16,439,918	27,169,078	juillet
August	9,808	6,993	14,079,054	21,715,913	2,220,262	5,446,481	16,309,124	27,169,387	août
September	29,334	19,283	12,710,445	19,814,447	2,020,894	4,979,940	14,760,673	24,813,670	septembre
October	20,676	13,376	14,072,809	21,957,027	2,261,500	5,590,757	16,354,985	27,561,160	octobre
November	17,944	11,954	7,631,010	11,861,496	1,498,390	3,750,403	9,147,344	15,623,853	novembre
December	0	0	0	0	0	0	0	0	décembre
2007	224,753	154,931	144,781,337	225,162,829	22,045,698	55,251,501	167,051,788	280,569,261	2007
2006	279,724	194,158	163,886,331	255,359,404	23,990,207	60,413,873	188,156,262	315,967,435	2006

CHICKEN SLAUGHTERED IN REGISTERED STATIONS  
NUMBERS AND EVISCERATED WEIGHT EQUIVALENT

2007  
CHICKENS - POULETS

POULETS ABATTUS AUX POSTES ENREGISTRÉS  
NOMBRE ET ÉQUIVALENT EN POIDS ÉVISCÉRÉ

Under 1 kg Moins de 1 kg		1 kg and under 2 kg 1 kg et moins de 2 kg		2 kg and over 2 kg et plus		TOTAL	
Head - Têtes	Kg	Head - Têtes	Kg	Head - Têtes	Kg	Head - Têtes	Kg

QUEBEC - QUÉBEC

January	106,029	76,932	13,352,688	20,817,200	575,370	1,551,132	14,034,087	22,445,264	janvier
February	106,593	75,830	12,303,528	19,214,814	587,648	1,591,433	12,997,769	20,882,077	février
March	95,766	63,258	14,145,490	22,065,753	618,188	1,655,710	14,859,444	23,784,721	mars
April	80,720	64,795	12,872,138	20,372,540	622,883	1,679,477	13,575,741	22,116,812	avril
May	87,203	61,130	13,840,333	21,939,578	627,553	1,711,753	14,555,089	23,712,461	mai
June	95,572	63,532	13,763,484	21,818,210	580,245	1,549,982	14,439,301	23,431,724	juin
July	88,048	58,649	13,876,805	21,868,337	562,486	1,537,849	14,527,339	23,464,835	juillet
August	69,364	43,713	14,561,101	22,915,385	588,562	1,559,390	15,219,027	24,518,488	août
September	73,636	49,092	12,931,828	20,340,197	627,727	1,651,132	13,633,191	22,040,421	septembre
October	64,071	45,240	14,400,512	22,949,456	728,081	1,942,317	15,192,664	24,937,013	octobre
November	57,759	40,128	7,595,977	12,085,370	364,926	998,169	8,018,662	13,123,667	novembre
December	0	0	0	0	0	0	0	0	décembre
2007	924,761	642,299	143,643,884	226,386,840	6,483,669	17,428,344	151,052,314	244,457,483	2007
2006	1,577,069	1,245,360	155,422,589	242,441,307	8,477,624	23,618,903	165,477,282	267,305,570	2006

ATLANTIC PROVINCES - PROVINCES DE L'ATLANTIQUE

January	0	0	4,552,039	6,917,928	22,758	50,807	4,574,797	6,968,735	janvier
February	0	0	3,970,858	5,963,902	9,035	19,400	3,979,893	5,983,302	février
March	0	0	4,427,682	6,594,434	17,345	36,512	4,445,027	6,630,946	mars
April	0	0	4,259,032	6,314,161	7,454	15,811	4,266,486	6,329,972	avril
May	0	0	4,559,061	6,973,658	21,296	45,639	4,580,357	7,019,297	mai
June	0	0	4,443,409	6,794,350	14,098	30,448	4,457,507	6,824,798	juin
July	0	0	4,426,322	6,656,827	19,960	43,173	4,446,282	6,700,000	juillet
August	0	0	4,439,459	6,606,301	7,629	16,268	4,447,088	6,622,569	août
September	0	0	4,163,918	6,311,801	0	0	4,163,918	6,311,801	septembre
October	0	0	4,474,014	6,781,143	35,425	73,557	4,509,439	6,854,700	octobre
November	0	0	2,443,038	3,699,277	4,534	9,465	2,447,572	3,708,742	novembre
December	0	0	0	0	0	0	0	0	décembre
2007	0	0	46,158,832	69,613,782	159,534	341,080	46,318,366	69,954,862	2007
2006	13,804	9,654	50,151,458	74,954,177	240,062	606,530	50,405,324	75,570,361	2006

ATLANTIC PROVINCES INCLUDE :

New Brunswick, Nova Scotia, Prince Edward Island and Newfoundland

LES PROVINCES DE L'ATLANTIQUE COMPRENNENT:

Le Nouveau-Brunswick, la Nouvelle-Écosse, l'Île-du-Prince-Édward et Terre-Neuve

Source: Canadian Food Inspection Agency, as compiled by AAFC, AID, Poultry Section  
Agence canadienne d'inspection des aliments, compilé par AAC, DIA, Section de la volaille

Printed as of / Imprimé le: 2007-11-23